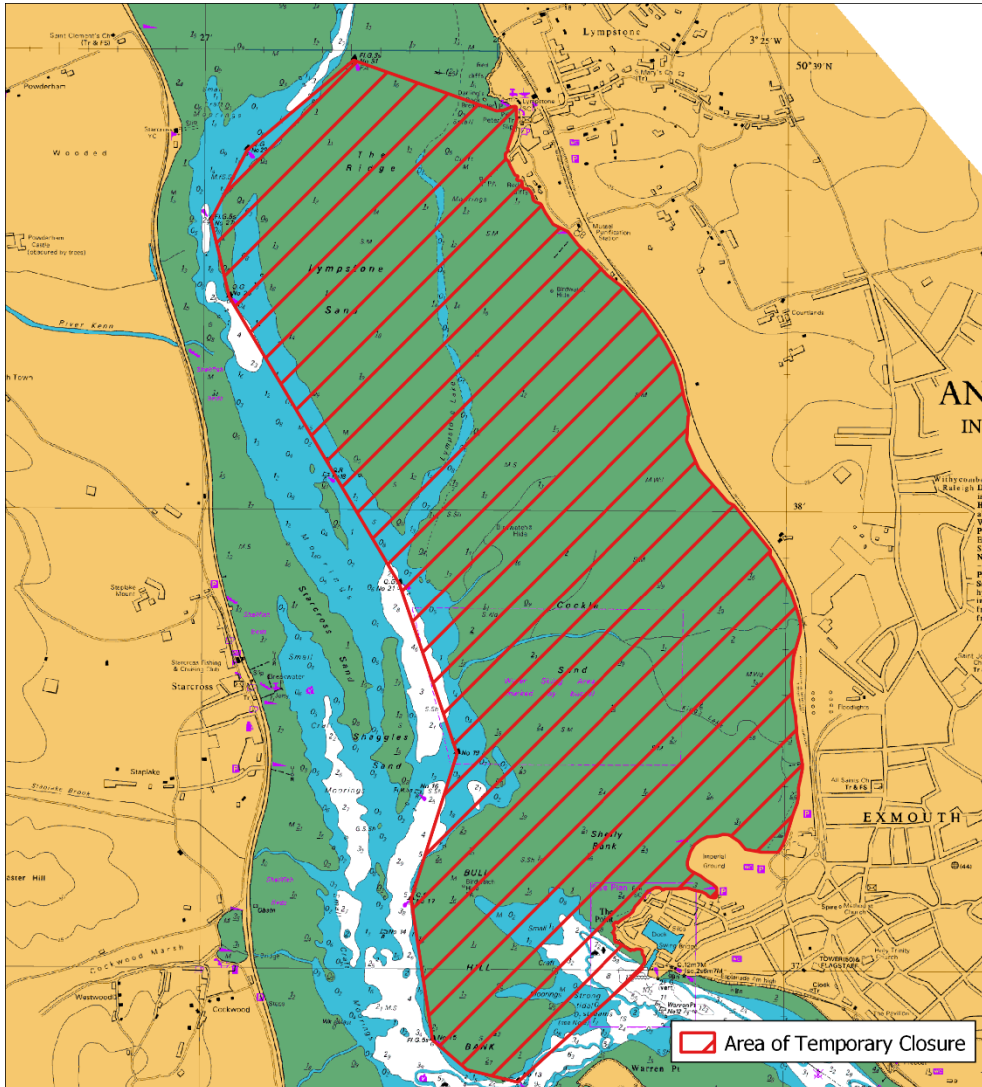


Temporary Closure of Public Mussel Beds - Exe

From 1st May 2019, and until further notice, it is prohibited for any person to remove mussels from the public shellfish bed as defined below:



Northern End of Exmouth Harbour Entrance: 50°37.00'N, 003°25.48'W

- Buoy 13: 50°36.75'N, 003°25.91'W
- Buoy 15: 50°36.84'N, 003°26.20'W
- Buoy 17: 50°37.15'N, 003°26.28'W
- Buoy 19: 50°37.47'N, 003°26.12'W
- Buoy 21: 50°37.84'N, 003°26.32'W
- Buoy 25: 50°38.46'N, 003°26.91'W
- Buoy 27: 50°38.63'N, 003°26.98'W
- Buoy 29: 50°38.78'N, 003°26.85'W
- Buoy 31: 50°38.98'N, 003°26.49'W

End of Lymington Harbour Wall: 50°38.87'N, 003°26.00'W

Additional Information

Devon and Severn Inshore Fisheries and Conservation Authority (D&S IFCA) has used Byelaw Number 9 (Temporary Closure of Shellfish Beds) to prohibit the removal of mussels and to promote the recovery of the bed. If you wish to discuss the temporary closure, please call 01803 854648.