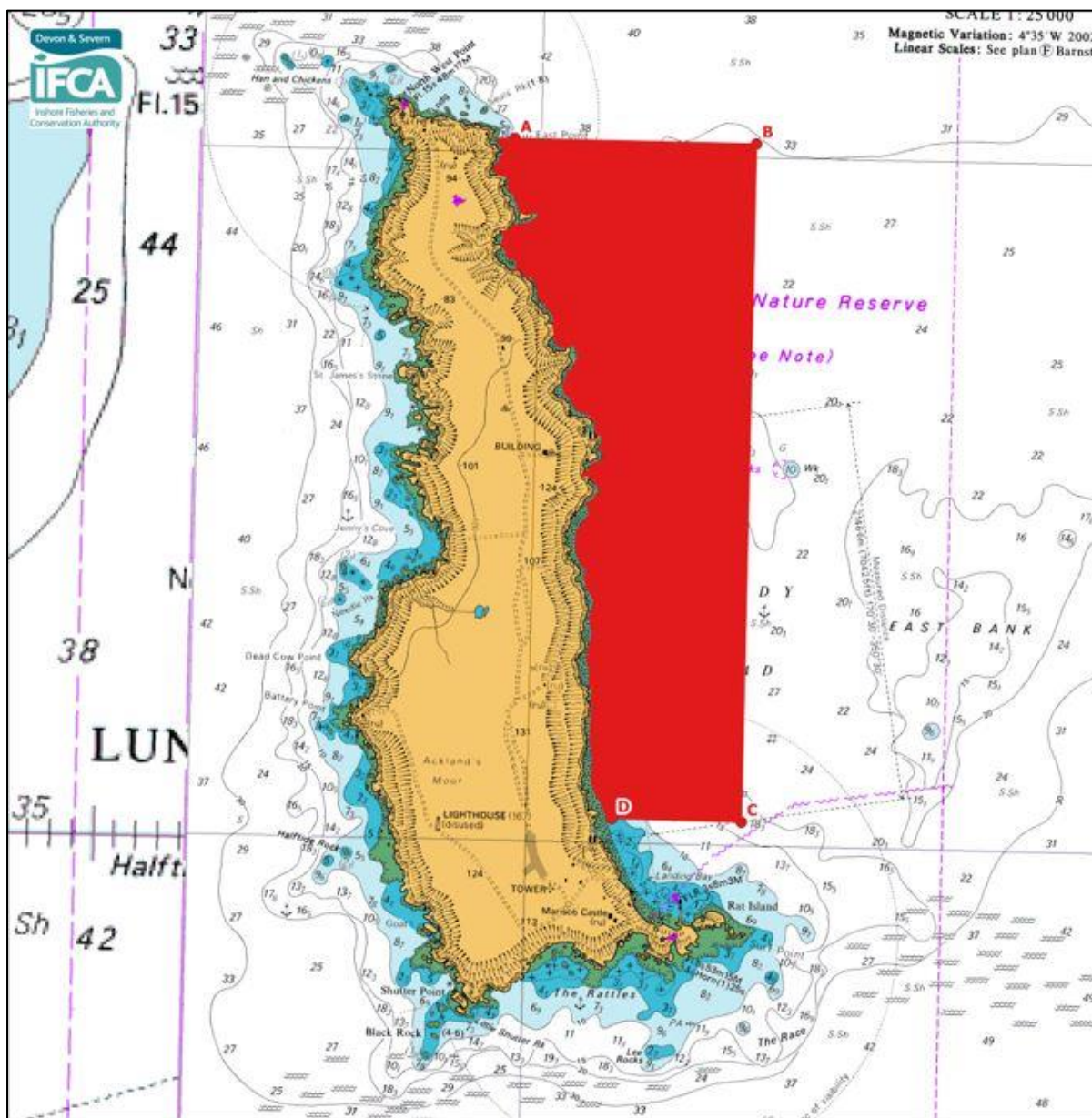


## Diving Permit Conditions – Annexes

Annex 1 Chart of Lundy No Take Zone – No removal of edible crab, spider crab, lobster, spiny lobster or scallop



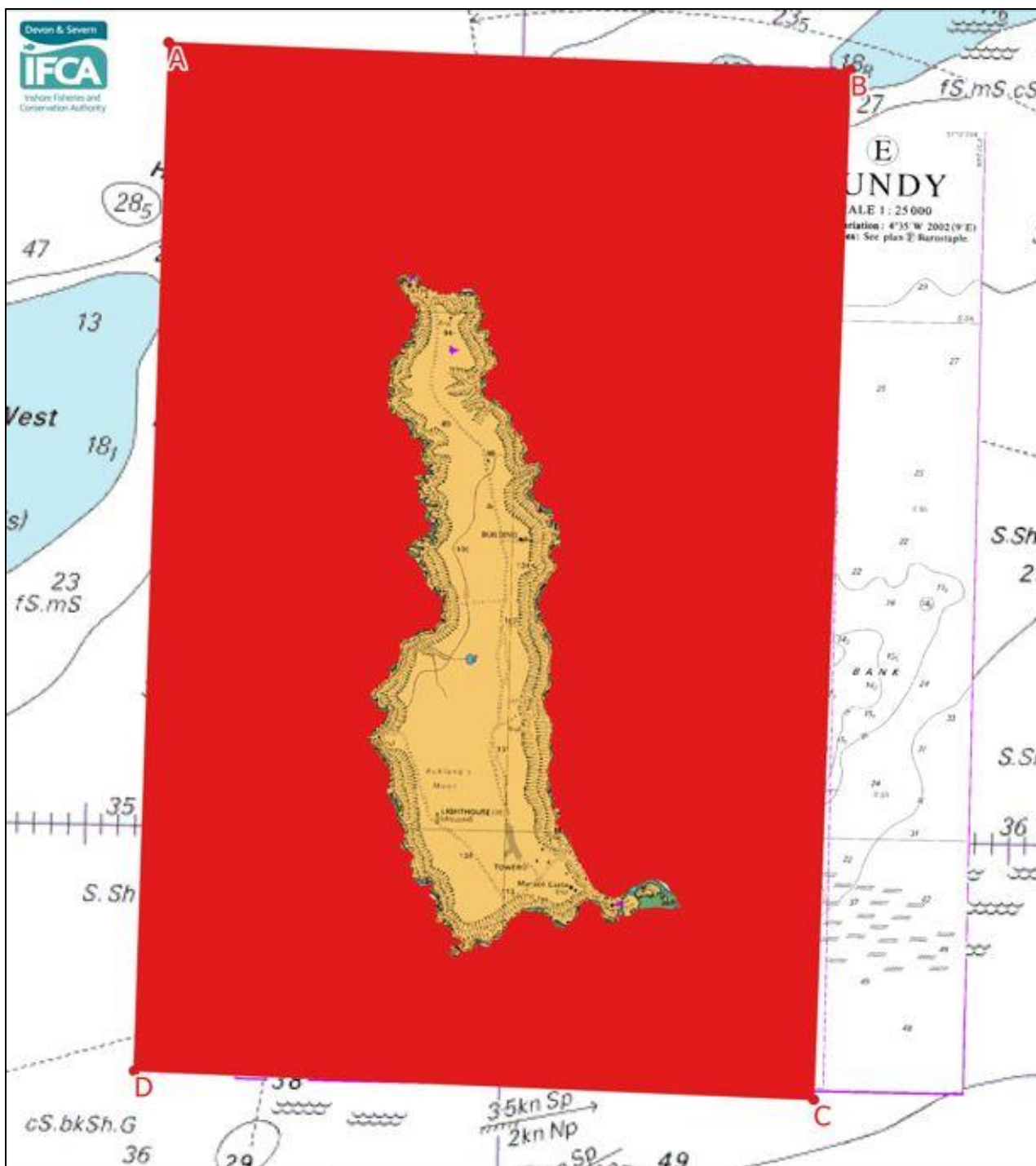
No removal of edible crab, spider crab, lobster, spiny lobster or scallop

### Latitude and Longitude Positions

Point	Latitude	Longitude
A	51°12.040'N	004°40.120'W
B	51°12.040'N	004°39.000'W
C	51°10.070'N	004°39.000'W
D	51°10.070'N	004°39.600'W

# Diving Permit Conditions – Annexes

## Annex 2 Chart of Lundy MCZ – No removal of spiny lobster



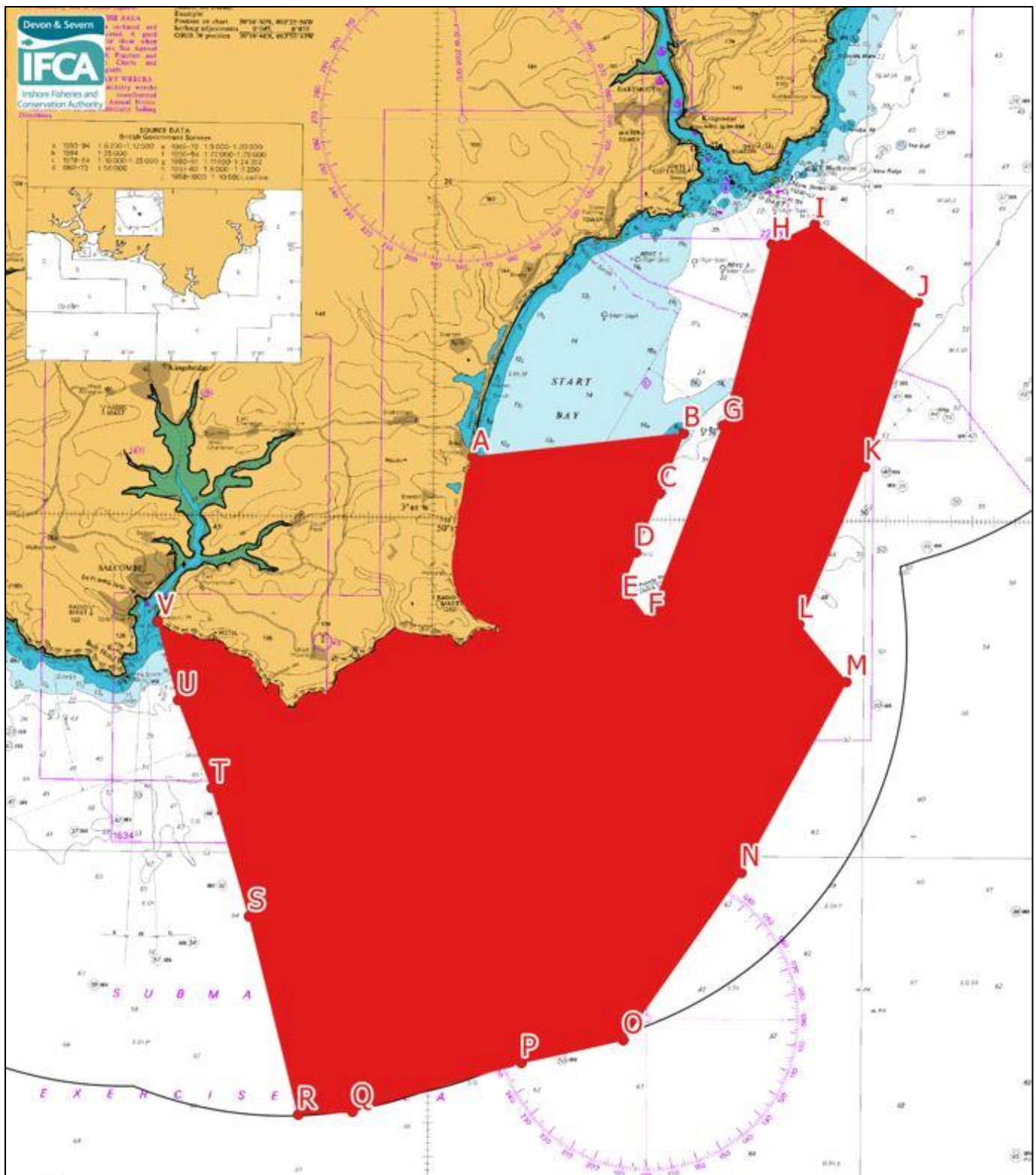
No removal of spiny lobster


### Latitude and Longitude Positions (Lundy MCZ)

Point	Latitude	Longitude
A	51° 13.022' N	004° 42.114' W
B	51° 12.972' N	004° 38.047' W
C	51° 08.986' N	004° 38.123' W
D	51° 09.040' N	004° 42.172' W

# Diving Permit Conditions – Annexes

## Annex 2 Chart of Skerries Bank and Surrounds MCZ – No removal of spiny lobster



 No removal of spiny lobster

The Skerries Bank and Surrounds MCZ extends beyond the 6 Nautical Mile Limit.

This chart illustrates the area of the MCZ that is within the Devon and Severn IFCA District.

## Diving Permit Conditions – Annexes

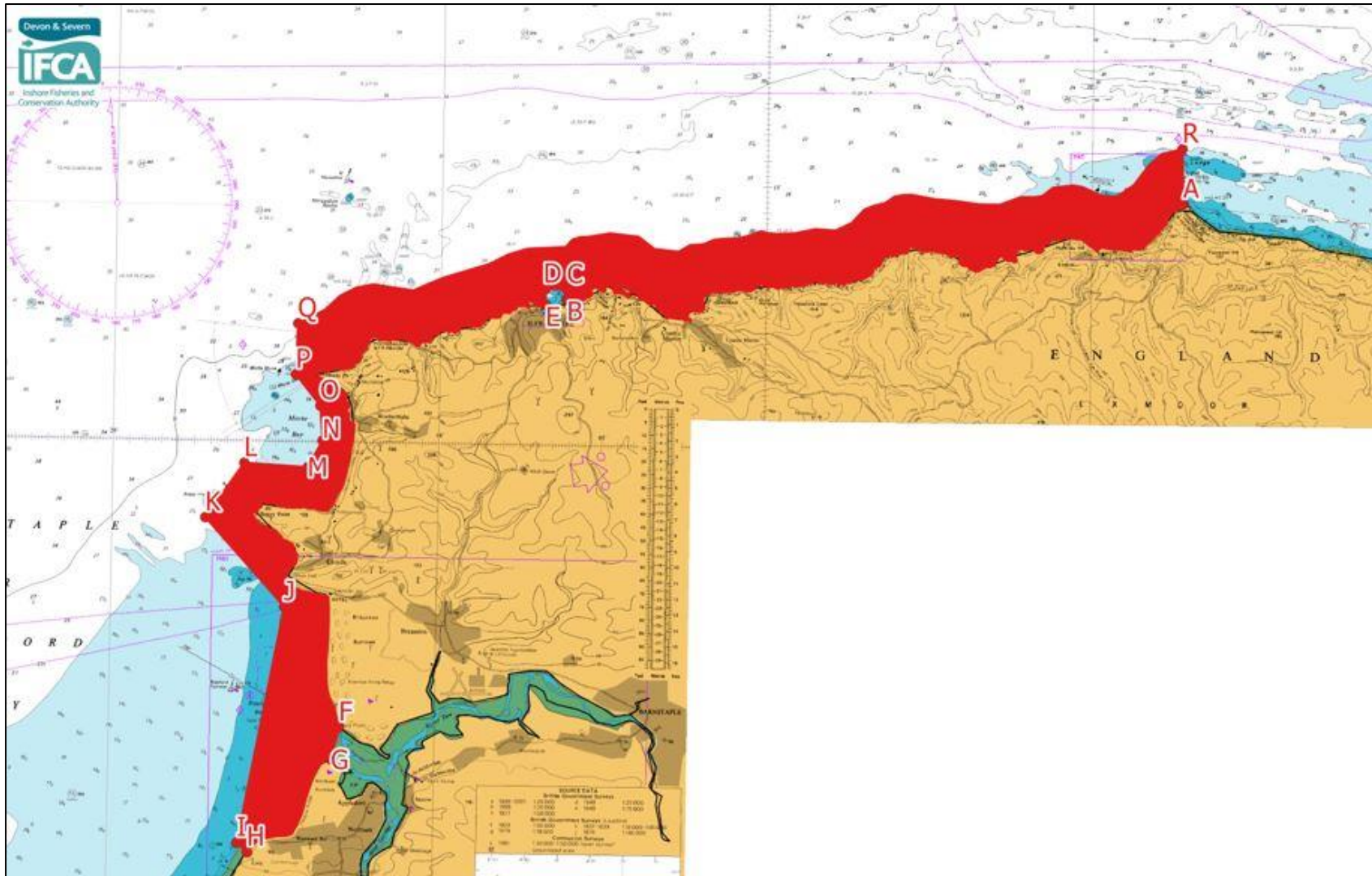
### Latitude and Longitude Positions (Skerries Bank and Surrounds MCZ)


Point	Latitude	Longitude
A	50° 15.900' N	003° 39.100' W
B	50° 16.278' N	003° 34.212' W
C	50° 15.384' N	003° 34.758' W
D	50° 14.502' N	003° 35.298' W
E	50° 13.998' N	003° 35.598' W
F	50° 13.500' N	003° 35.000' W
G	50° 16.400' N	003° 33.300' W
H	50° 19.100' N	003° 32.200' W
I	50° 19.400' N	003° 31.200' W
J	50° 18.250' N	003° 28.800' W
K	50° 15.800' N	003° 30.000' W
L	50° 13.450' N	003° 31.500' W
M	50° 12.600' N	003° 30.400' W
N	50° 09.750' N	003° 32.800' W
O	50° 07.250' N	003° 35.500' W
P	50° 06.900' N	003° 37.850' W
Q	50° 06.150' N	003° 41.750' W
R	50° 06.100' N	003° 43.000' W
S	50° 09.041' N	003° 44.183' W
T	50° 10.942' N	003° 45.079' W
U	50° 12.243' N	003° 45.876' W
V	50° 13.418' N	003° 46.374' W

The landward boundary between point A and V follows Mean High Water

# Diving Permit Conditions – Annexes

## Annex 2 Chart of Bideford to Foreland Point MCZ – No removal of spiny lobster



 No removal of spiny lobster

## Diving Permit Conditions – Annexes

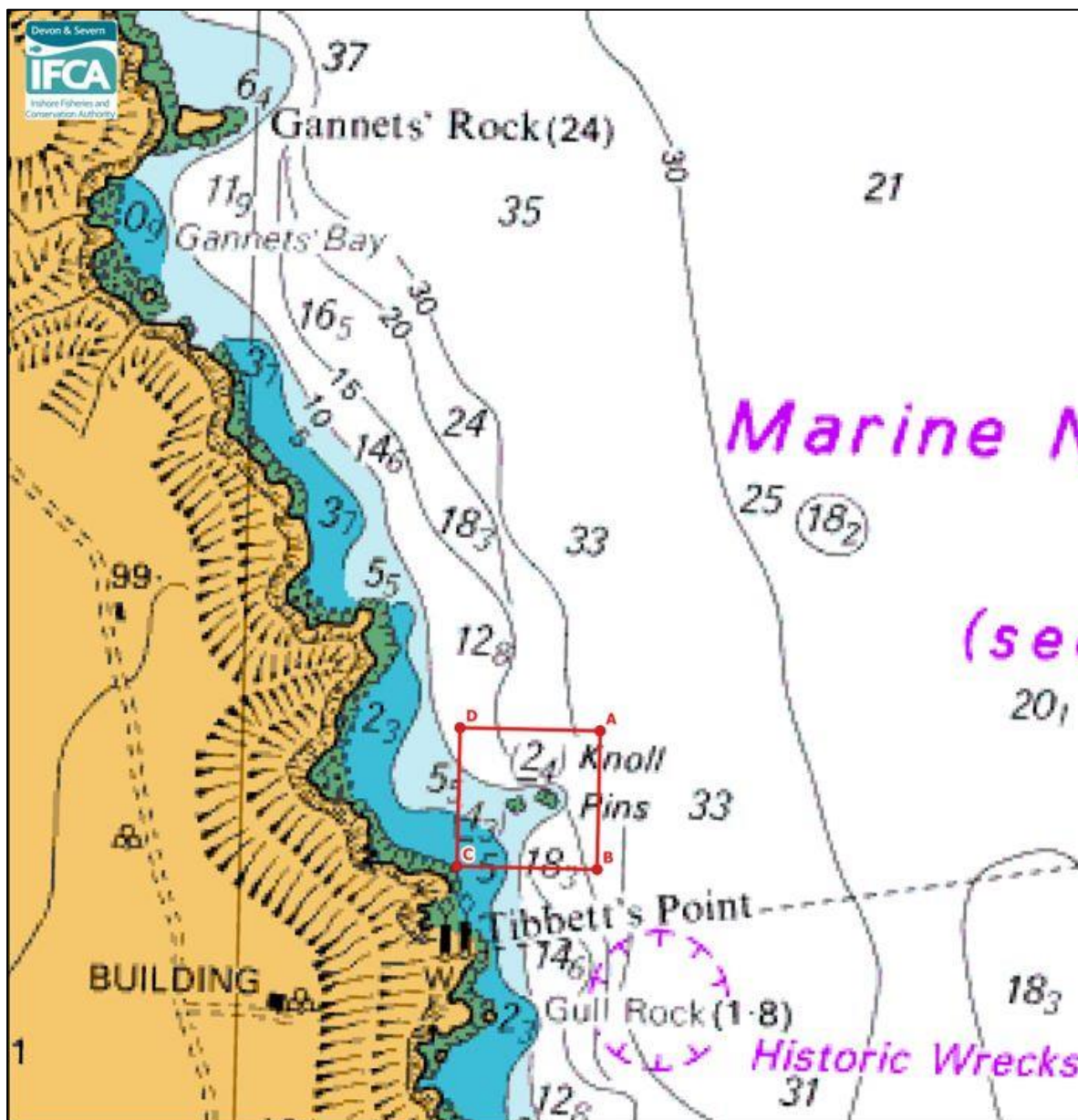
### Latitude and Longitude Positions (Bideford to Foreland Point MCZ)

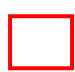
Point	Latitude	Longitude
A	51° 14.764' N	003° 47.203' W
B	51° 12.792' N	004° 06.128' W
C	51° 12.980' N	004° 06.125' W
D	51° 12.983' N	004° 06.777' W
E	51° 12.683' N	004° 06.777' W
F	51° 04.525' N	004° 12.923' W
G	51° 03.902' N	004° 13.150' W
H	51° 02.098' N	004° 15.684' W
I	51° 02.281' N	004° 15.999' W
J	51° 06.816' N	004° 14.666' W
K	51° 08.505' N	004° 17.134' W
L	51° 09.563' N	004° 15.965' W
M	51° 09.500' N	004° 14.013' W
N	51° 10.011' N	004° 13.569' W
O	51° 10.677' N	004° 13.653' W
P	51° 11.274' N	004° 14.425' W
Q	51° 12.250' N	004° 14.384' W
R	51° 15.825' N	003° 47.243' W

The landward boundary between points A and B, E and F, G and H, follows Mean High Water. Between point Q and point R the seaward boundary is 1 nautical mile seaward of Mean High Water.

## Diving Permit Conditions – Annexes

Annex 3 Chart of Knoll Pins – It is prohibited to use of any container or any other device to store any edible crab, spider crab, lobster, spiny lobster or scallop in the Knoll Pins area.



 It is prohibited to use of any container or any other device to store any edible crab, spider crab, lobster, spiny lobster or scallop in the Knoll Pins area.

### Latitude and Longitude Positions (Knoll Pins)

Point	Latitude	Longitude
A	51°11.346'N	004°39.550'W
B	51°11.238'N	004°39.550'W
C	51°11.238'N	004°39.726'W
D	51°11.346'N	004°39.726'W