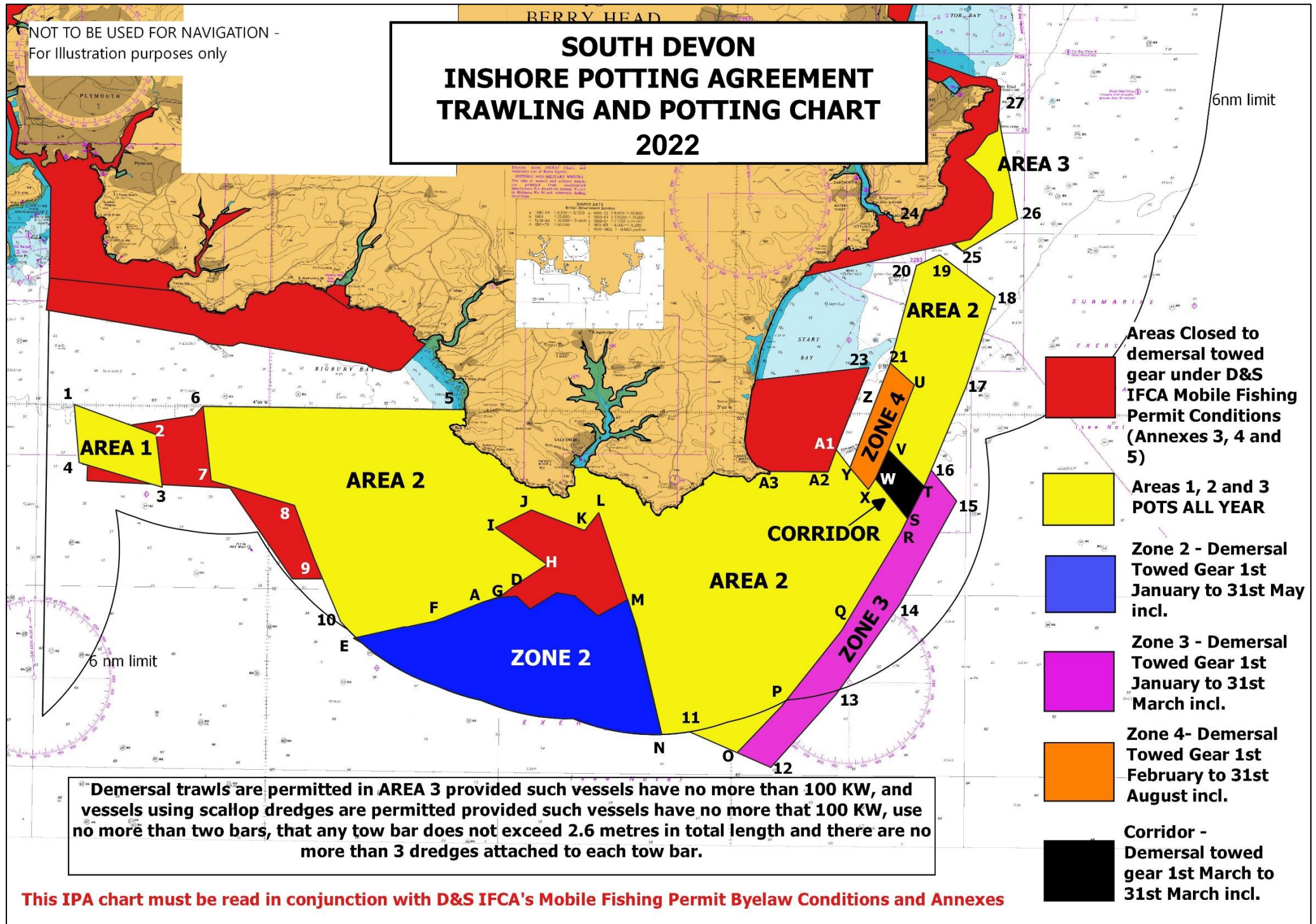


NOT TO BE USED FOR NAVIGATION -
For Illustration purposes only

SOUTH DEVON INSHORE POTTING AGREEMENT TRAWLING AND POTTING CHART 2022



Inshore Potting Agreement Trawling and Crabbing Chart 2022 Positions

<u>Area 1 Pots all year</u>			<u>Area 3 Pots all year (see Chart)</u>			<u>Zone 3 Continued</u>		
1	50° 15.00N	004° 08.45W	24	50° 20.30N	003° 32.10W	T	50° 13.00N	003° 31.80W
2	50° 14.20N	004° 04.90W	25	50° 19.50N	003° 30.20W	S	50° 12.10N	003° 32.50W
3	50° 12.75N	004° 04.60W	26	50° 20.40N	003° 27.85W	R	50° 11.70N	003° 32.80W
4	50° 13.40N	004° 08.20W	27	50° 24.00N	003° 28.95W	Q	50° 09.00N	003° 35.30W
<u>Area 2 Pots all year</u>			<u>Zone 2 open for trawling 1st Jan to 31st May incl.</u>			P	50° 06.90N	003° 37.85W
5	50° 15.00N	003° 51.65W	E	50° 08.65N	003° 56.30W	O	50° 05.60N	003° 39.75W
6	50° 15.00N	004° 02.90W	F	50° 09.15N	003° 52.80W			
7	50° 12.95N	004° 02.50W	A	50° 09.70N	003° 50.70W			
8	50° 12.30N	003° 58.90W	G	50° 09.85N	003° 50.00W	<u>Zone 4 open for trawling 1st Feb to 31st August incl.</u>		
9	50° 10.80N	003° 58.00W	D	50° 10.15N	003° 49.40W	21	50° 16.40N	003° 33.30W
10	50° 09.10N	003° 56.85W	H	50° 10.75N	003° 48.00W	U	50° 15.80N	003° 32.25W
<u>then along 6 mile limit to:</u>			I	50° 11.75N	003° 50.25W	V	50° 14.00N	003° 33.35W
11	50° 06.15N	003° 41.75W	J	50° 12.25N	003° 48.70W	W	50° 13.20N	003° 33.90W
12	50° 05.20N	003° 38.30W	K	50° 11.70N	003° 46.40W	X	50° 12.90N	003° 34.20W
13	50° 07.25N	003° 35.50W	L	50° 12.20N	003° 45.80W	Y	50° 13.50N	003° 35.00W
14	50° 09.75N	003° 32.80W	M	50° 09.00N	003° 44.10W	Z	50° 14.70N	003° 34.30W
15	50° 12.60N	003° 30.40W	N	50° 06.10N	003° 43.00W	21	50° 16.40N	003° 33.30W
16	50° 13.45N	003° 31.50W	<u>then along 6 mile limit to:</u>					
17	50° 15.80N	003° 30.00W	E	50° 08.65N	003° 56.30W	<u>Corridor open to trawling 1st March to 31st March inclusive</u>		
18	50° 18.25N	003° 28.80W				S	50° 12.10N	003° 32.50W
19	50° 19.40N	003° 31.20W	<u>Zone 3 open for trawling 1st Jan to 31st March incl.</u>			T	50° 13.00N	003° 31.80W
20	50° 19.10N	003° 32.20W	O	50° 05.60N	003° 39.75W	V	50° 14.00N	003° 33.35W
21	50° 16.40N	003° 33.30W	12	50° 05.20N	003° 38.30W	W	50° 13.20N	003° 33.90W
Y	50° 13.50N	003° 35.00W	13	50° 07.25N	003° 35.50W	S	50° 12.10N	003° 32.50W
X	50° 12.90N	003° 34.20W	14	50° 09.75N	003° 32.80W			
A1	50° 14.00N	003° 35.60W	15	50° 12.60N	003° 30.40W			
A2	50° 13.38N	003° 35.94W	16	50° 13.45N	003° 31.50W			
A3	50° 13.38N	003° 38.45W						