

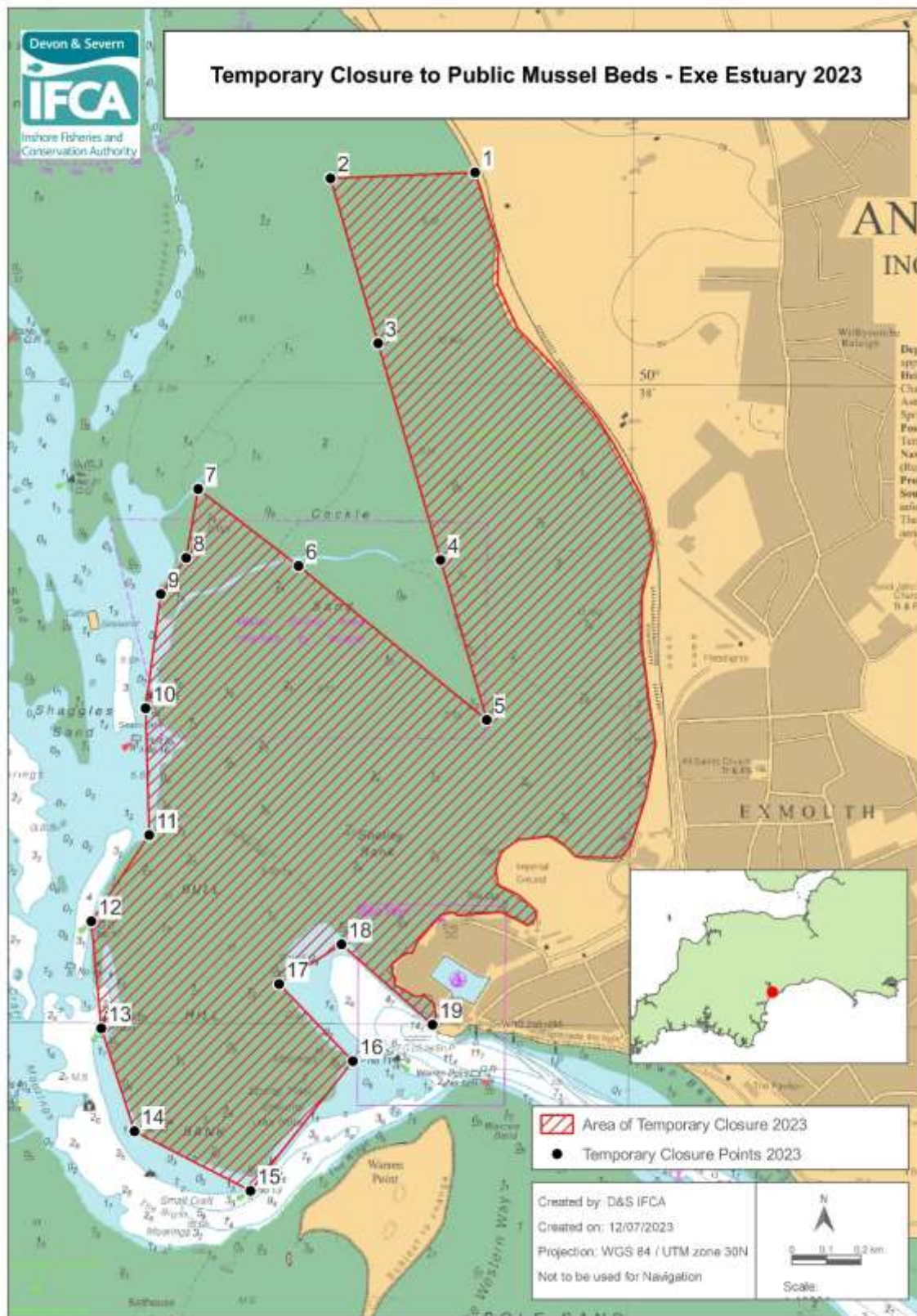
Temporary Closure of Public Mussel Beds – Exe Estuary 2023

Due to the decline in the mussel beds and the lack of seed settling in the areas (as defined) the Authority are able introduce a temporary closure of beds under D&S IFCA's Byelaw 9 - Temporary Closure of Shellfish Beds, is as follows:

Where in the opinion of the Committee, in any fishery, any bed or part of a bed of shellfish is so severely depleted as to require temporary closure in order to ensure recovery, or any bed or part of a bed contains mainly immature or undersized shellfish which in the interests of the protection and development of the fishery ought not to be fished for the time being or any bed of transplanted shellfish ought not to be fished until it has become established, and where the bed or part thereof has been clearly defined in notices displayed in the vicinity prohibiting the removal of the shellfish, or where the display of notices is not practicable a notice in a weekly newspaper circulating in the district in which the shellfish bed or part of the bed is situated, no person shall, while the bed or part thereof so defined, take away any shellfish without the consent of the Committee. For the purpose of this Byelaw the term "shellfish" means mussels, oysters, clams and periwinkles.

Temporary Closure of Public Mussel Beds – Exe Estuary 2023

From 12th July 2023, and until further notice, it is prohibited for any person to remove mussels from the public shellfish bed as defined below:



Temporary Closure of Public Mussel Beds – Exe Estuary 2023

Prohibition on the removal of mussel from the Exe Estuary within the D&S IFCA's District outlined by the following Points plotted sequentially from Point 1 to Point 19, then returning to Point 1. The landward boundary follows Mean High Water.

Point Number	Latitude	Longitude	Exe Estuary Channel Buoys
1	50° 38.330' N	003° 25.388' W	
2	50° 38.319' N	003° 25.742' W	
3	50° 38.062' N	003° 25.623' W	
4	50° 37.725' N	003° 25.467' W	
5	50° 37.476' N	003° 25.351' W	
6	50° 37.714' N	003° 25.815' W	
7	50° 37.834' N	003° 26.062' W	
8	50° 37.726' N	003° 26.091' W	
9	50° 37.669' N	003° 26.153' W	
10	50° 37.491' N	003° 26.188' W	Buoy 19
11	50° 37.293' N	003° 26.177' W	
12	50° 37.158' N	003° 26.318' W	Buoy 17
13	50° 36.991' N	003° 26.292' W	Hinton
14	50° 36.831' N	003° 26.209' W	Buoy 15
15	50° 36.739' N	003° 25.924' W	Buoy 13
16	50° 36.942' N	003° 25.675' W	
17	50° 37.062' N	003° 25.857' W	
18	50° 37.124' N	003° 25.704' W	
19	50° 37.000' N	003° 25.480' W	

Additional Information

Devon and Severn Inshore Fisheries and Conservation Authority (D&S IFCA) has used Byelaw Number 9 (Temporary Closure of Shellfish Beds) to prohibit the removal of mussels and to promote the recovery of the bed. If you wish to discuss the temporary closure, please call 01803 854648.

Note:

The temporary closure was introduced in 2019 and the chart defining the area of the temporary closure was updated in July 2023.