

Annex 7

Netting Survey 2014

A survey was carried out in 2014 to provide information on the netting and potting effort in the D&S IFCA district. Survey forms were sent out to over 400 fishing vessels known to fish in our district, using a MMO license fishing vessel database. Netting survey responses were received from 64 fishermen. The survey forms consisted of questions relating to their activity such as number and length of nets, fish targeted and seasonality. Charts were also provided to fishermen for them to indicate the location of the nets used. The responses were not uniform in nature. Some fishermen gave detailed information including exact location of each net whereas others gave a more generalised approach showing the extent of the areas that they use nets.

Figures 1 and 2 show the location of nets and netting areas in the Devon part of the district for the north and south coasts. The charts show a yellow 1nm zone along the coast to provide context for the position of the nets and netting areas. The estuaries used for netting as indicated by responses are shown as circles unless specific net positions have been given.

From both charts it can be seen that netting takes place inside the 1nm mile zone of both the North and South Devon coasts. The level of effort and number of fishers involved in netting, from the responses, is higher on the South coast where there are greater number fishing vessels, estuaries and landing ports. Some of the responses show the exact locations of where nets were placed, that targeted certain species e.g. rays, bass but this information is too detailed to include in these charts. Further analysis of the survey data will be undertaken. There are no data from the 2014 survey for the netting activity along the Somerset coast and the Severn Estuary. These data are being collected separately.

Port	Number of Boats	Fish Targeted					
		bass	mullet	shellfish e.g. spider crab, crawfish	rays & skates	flats incl. brill, turbot, sole, plaice & monkfish	other incl. cod, wrasse, Pollack,
Salcombe & Hope Cove	10	4	3	3	8	8	3
Dartmouth and Beesands	13	10	5	4	9	11	4
East Devon	6	6	0	0	4	6	5
Exmouth	5	3	2	0	4	5	2
Teignmouth	6	2	2	0	3	5	1
Torbay	5	3	1	1	1	5	5
Plymouth	9	3	1	1	6	5	5
North Devon	7	6	3	0	2	1	5
Totals	61	37	17	9	37	46	30

Table 1: Summary of response for fish targeted by port

Sixty one of the boats' survey responses are shown in table 1. The fishermen indicated what species they targeted with their nets. The largest number of boats targeted rays, skates and flat fish using tangle or trammel gill nets to catch these species which have a large mesh size. Many boats targeted bass and mullet with gill nets. Some of the vessels targeted both bass and mullet, and rays and flat fish at different times of the year. Some indicated that bass tend to be targeted in the summer months whilst others targeted bass over winter which might indicate that some of this activity takes place in Bass Nursey Areas when they are open to drift nets. The other species were targeted all year but all activity is weather dependent.

Location of Netting Activity from Netting Survey 2014 D&S IFCA District South Coast

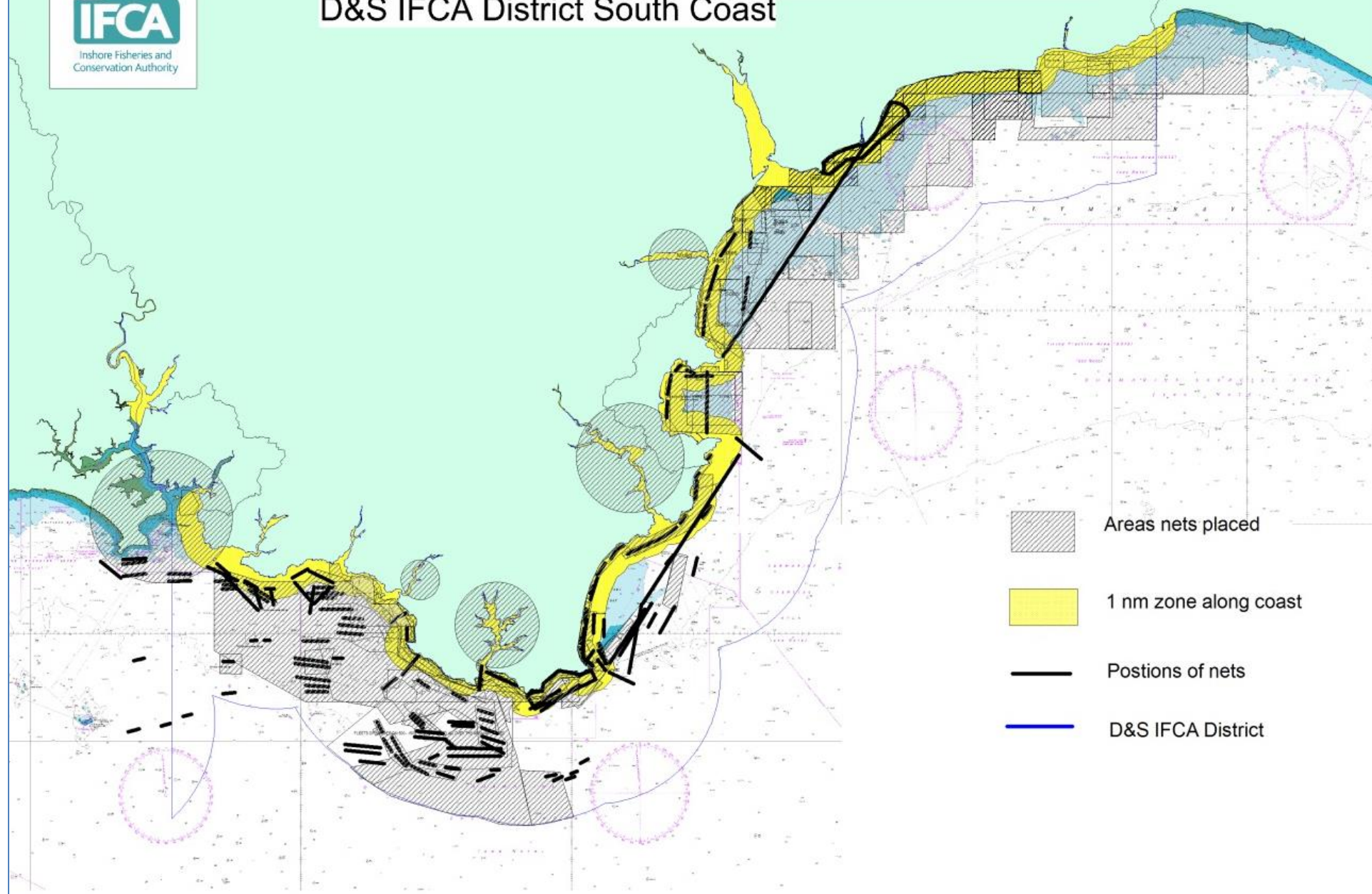


Figure 1: Location of Nets along the South Devon Coast



Location of Netting Activity from Netting Survey 2014 D&S IFCA District North Devon Coast

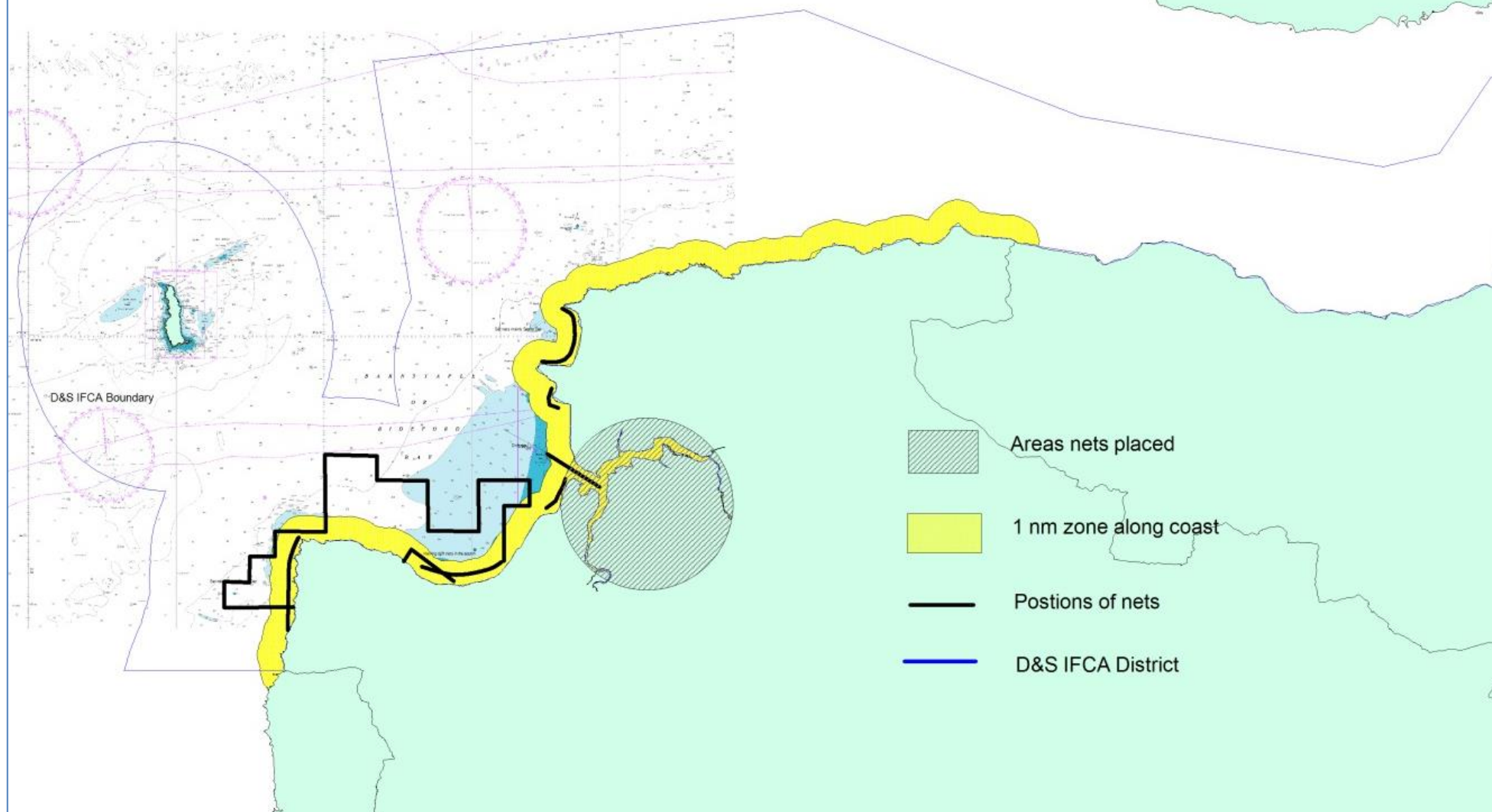


Figure 2: Location of Nets along the North Devon Coast

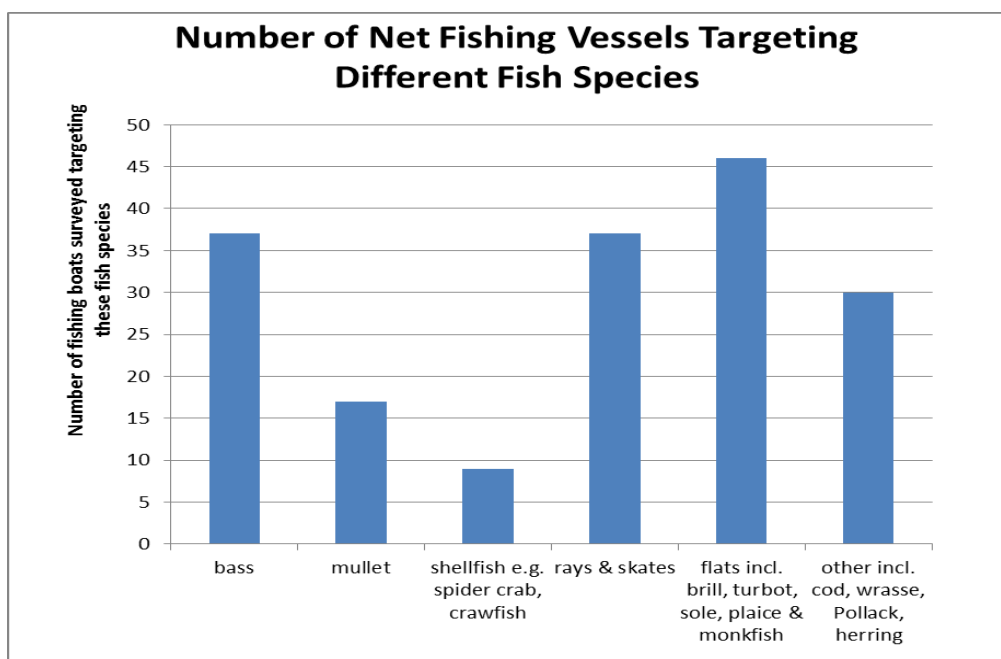


Figure 3: Survey responses showing number of netters targeting different species

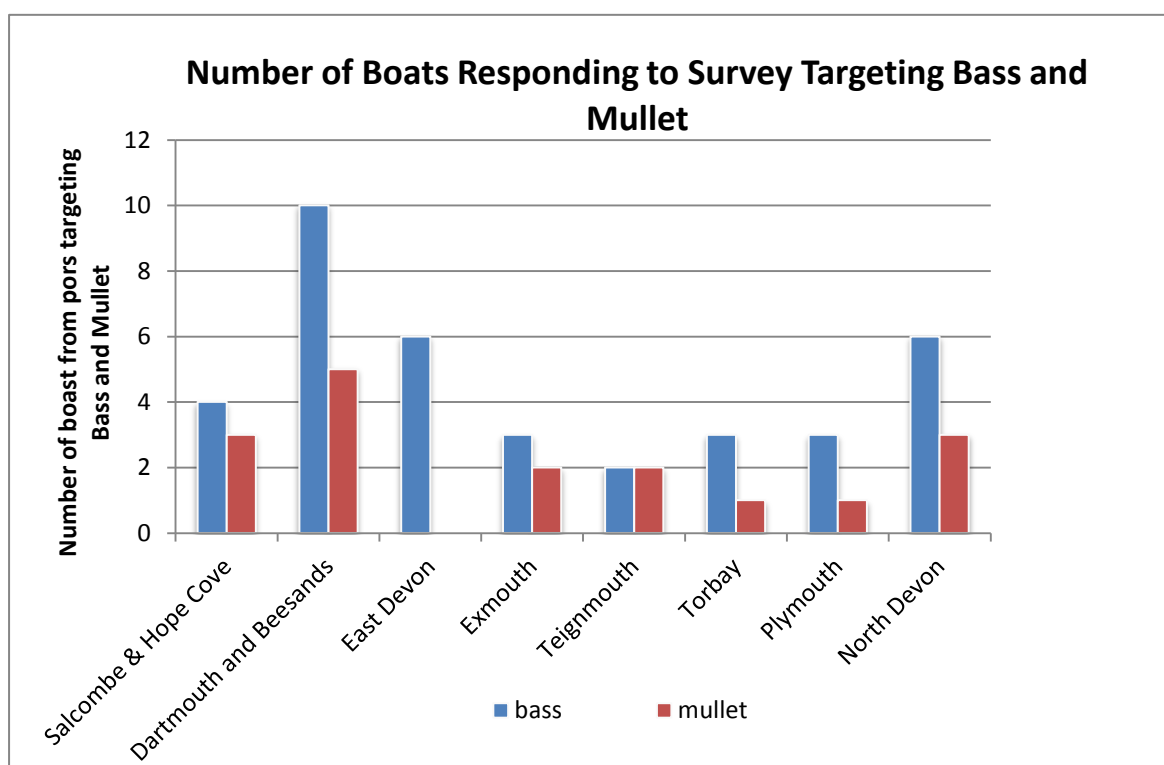


Figure 4: Survey responses showing the number of boats targeting bass and mullet from each port

Figure 3 displays the data held in table 1. Figure 4 shows the number of boats that target bass and mullet in the different ports/areas along the coast from survey responses. The figures shown are similar to the number of boats highlights in the ports form the MMO landings data.