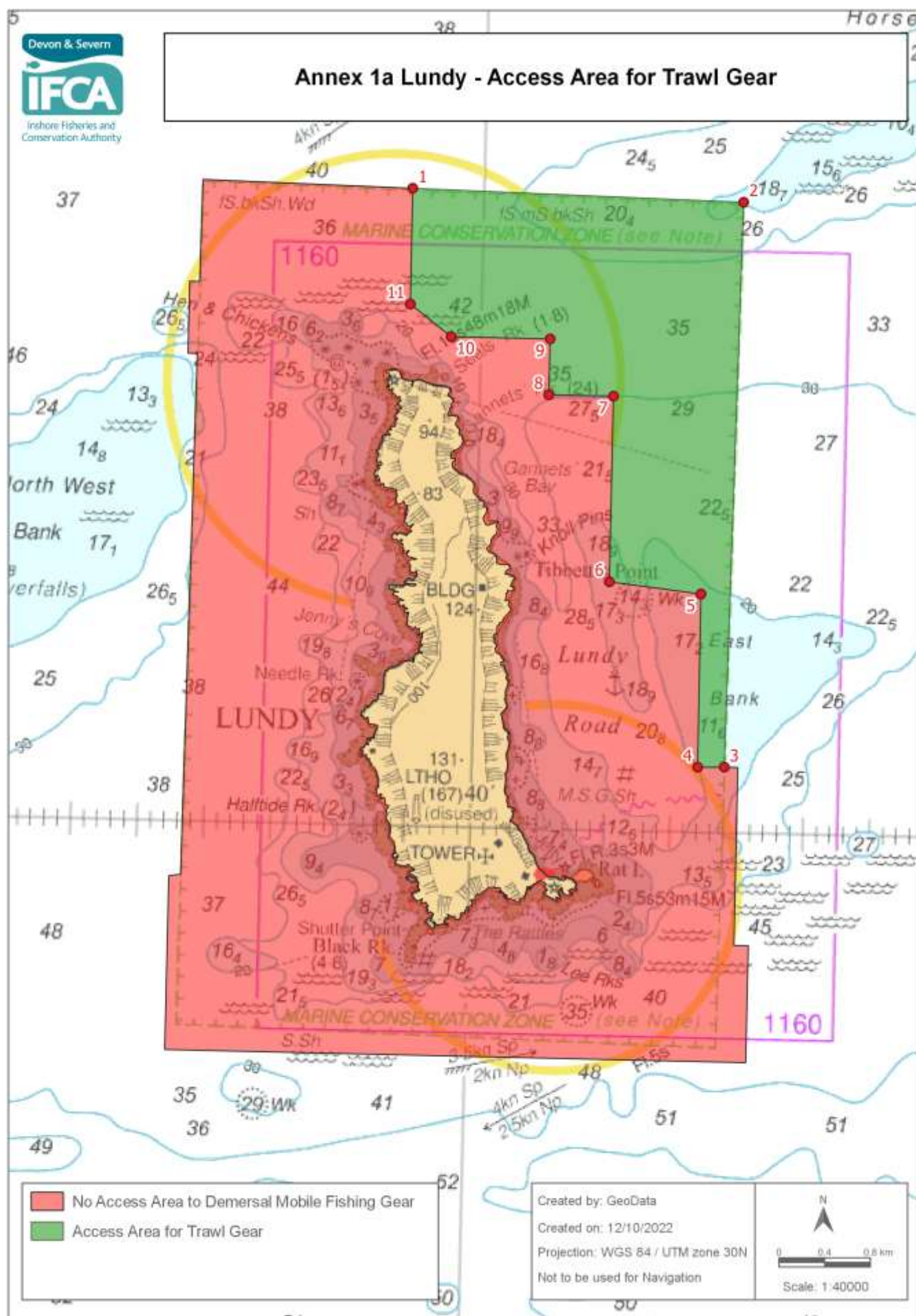


Annex 1 Lundy – No Access Area to Demersal Mobile Fishing Gear.

No access area to demersal mobile fishing gear within the D&S IFCA District outlined by the following Points plotted sequentially from Point 1 to Point 14, then returning to Point 1. The landward boundary follows Mean High Water.

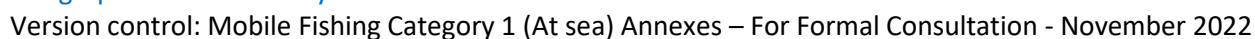
Point Number	Latitude	Longitude
1	51°13.022 N	004°42.116 W
2	51°12.972 N	004°38.049 W
3	51°10.303 N	004°38.100 W
4	51°10.303 N	004°37.998 W
5	51°09.462 N	004°37.998 W
6	51°09.462 N	004°37.890 W
7	51°08.910 N	004°37.890 W
8	51°08.910 N	004°42.252 W
9	51°09.732 N	004°42.252 W
10	51°09.739 N	004°42.164 W
11	51°12.200 N	004°42.128 W
12	51°12.200 N	004°42.198 W
13	51°12.540 N	004°42.198 W
14	51°12.540 N	004°42.123 W



Annex 1a Lundy – Access Area for Trawl Gear in accordance with Paragraph with 8.1 of the Mobile Fishing Permit Byelaw Category One Permit Conditions

Access area for Trawl Gear within the D&S IFCA District outlined by the following Points plotted sequentially from Point 1 to Point 11, then returning to Point 1.

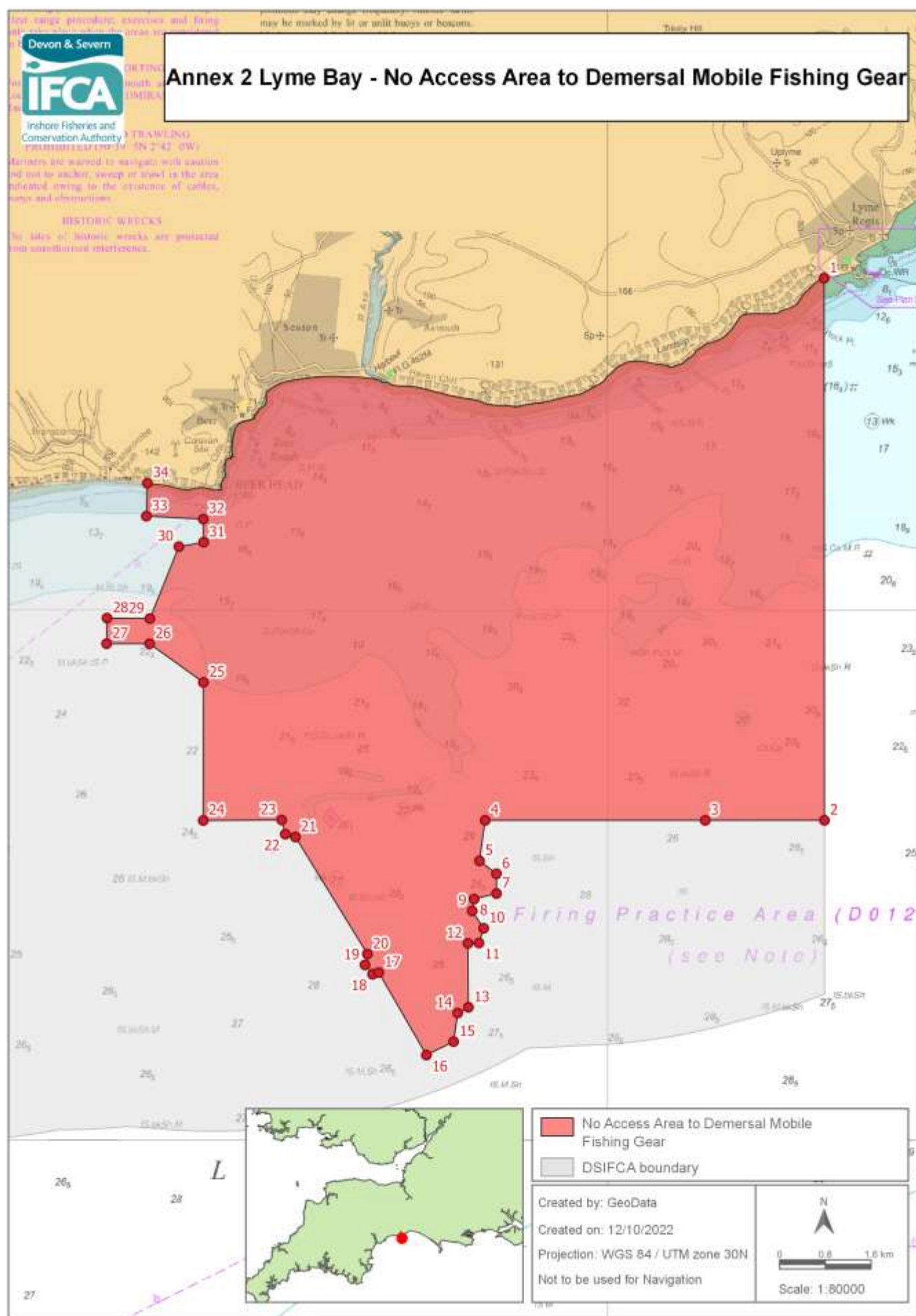
Point Number	Latitude	Longitude
1	51° 13.003 N	004° 40.538 W
2	51° 12.972 N	004° 38.049 W
3	51° 10.303 N	004° 38.100 W
4	51° 10.300 N	004° 38.300 W
5	51° 11.118 N	004° 38.304 W
6	51° 11.166 N	004° 38.994 W
7	51° 12.042 N	004° 38.994 W
8	51° 12.042 N	004° 39.480 W
9	51° 12.306 N	004° 39.480 W
10	51° 12.306 N	004° 40.224 W
11	51° 12.456 N	004° 40.536 W



Annex 1b Lundy – Access Area for Dredge Gear in accordance with Paragraph 8.1 of the Mobile Fishing Permit Byelaw Category One Permit Conditions

Access area for Dredge Gear within the D&S IFCA District outlined by the following Points plotted sequentially from Point 1 to Point 4, then returning to Point 1.

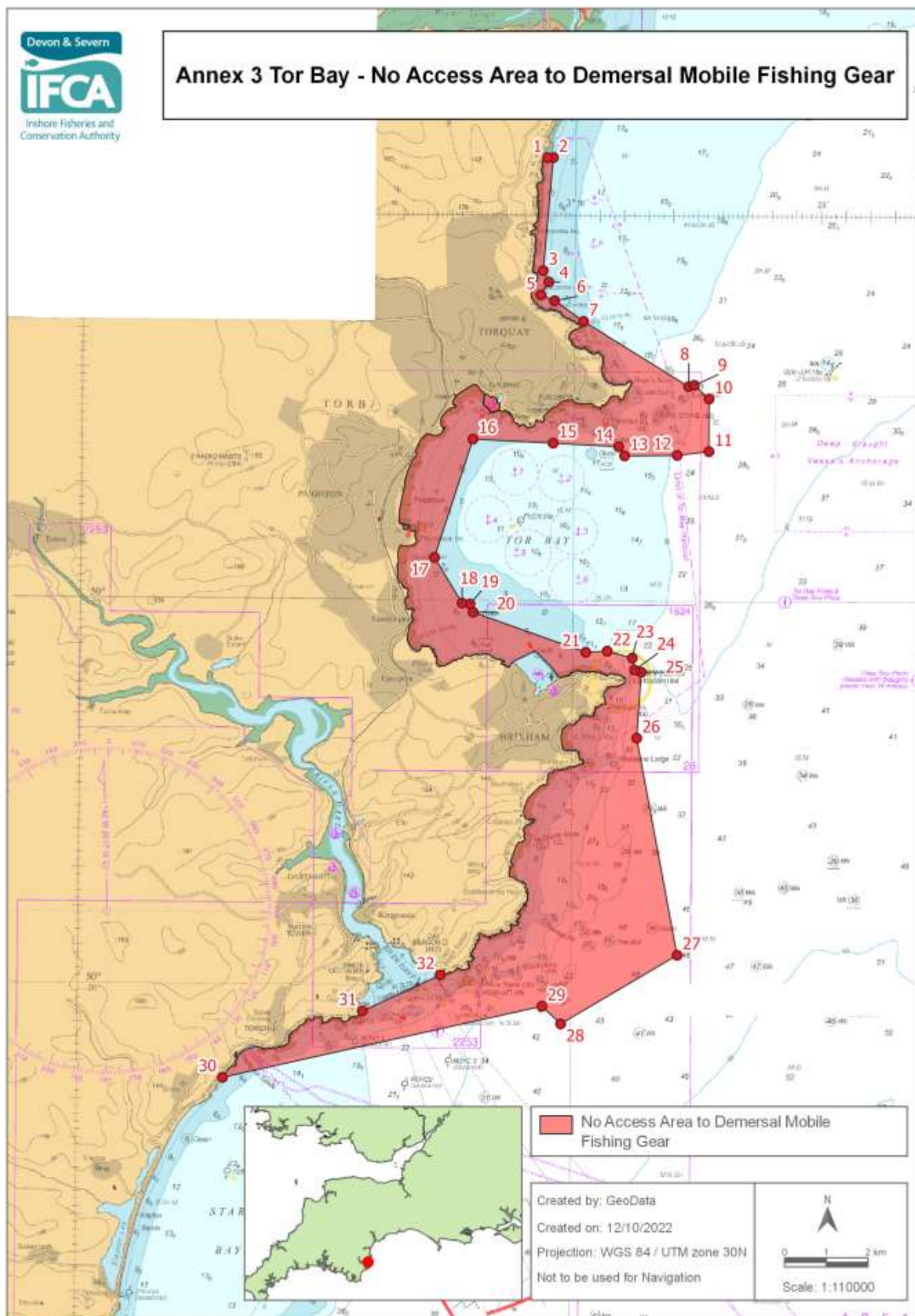
Point Number	Latitude	Longitude
1	51° 12.995 N	004° 39.895 W
2	51° 12.972 N	004° 38.049 W
3	51° 12.684 N	004° 38.054 W
4	51° 12.660 N	004° 39.890 W



Annex 2 Lyme Bay – No Access Area to Demersal Mobile Fishing Gear

No access area to Demersal Mobile Fishing Gear within the D&S IFCA District outlined by the following Points plotted sequentially from Point 1 to Point 34, then returning to Point 1. The landward boundary follows Mean High Water.

Point Number	Latitude	Longitude
1	50° 43.116 N	002° 56.782 W
2	50° 38.004 N	002° 56.782 W
3	50° 38.004 N	002° 58.551 W
4	50° 38.004 N	003° 01.817 W
5	50° 37.622 N	003° 01.901 W
6	50° 37.500 N	003° 01.648 W
7	50° 37.314 N	003° 01.648 W
8	50° 37.262 N	003° 01.980 W
9	50° 37.150 N	003° 02.009 W
10	50° 36.986 N	003° 01.839 W
11	50° 36.848 N	003° 01.908 W
12	50° 36.844 N	003° 02.071 W
13	50° 36.241 N	003° 02.064 W
14	50° 36.186 N	003° 02.223 W
15	50° 35.917 N	003° 02.283 W
16	50° 35.790 N	003° 02.686 W
17	50° 36.568 N	003° 03.393 W
18	50° 36.552 N	003° 03.485 W
19	50° 36.640 N	003° 03.598 W
20	50° 36.743 N	003° 03.562 W
21	50° 37.846 N	003° 04.632 W
22	50° 37.873 N	003° 04.782 W
23	50° 38.006 N	003° 04.835 W
24	50° 38.000 N	003° 06.000 W
25	50° 39.303 N	003° 06.000 W
26	50° 39.667 N	003° 06.800 W
27	50° 39.667 N	003° 07.438 W
28	50° 39.908 N	003° 07.433 W
29	50° 39.904 N	003° 06.796 W
30	50° 40.583 N	003° 06.367 W
31	50° 40.625 N	003° 06.000 W
32	50° 40.843 N	003° 06.006 W
33	50° 40.870 N	003° 06.851 W
34	50° 41.182 N	003° 06.836 W
Landward boundary follows Mean High Water to Point 1		



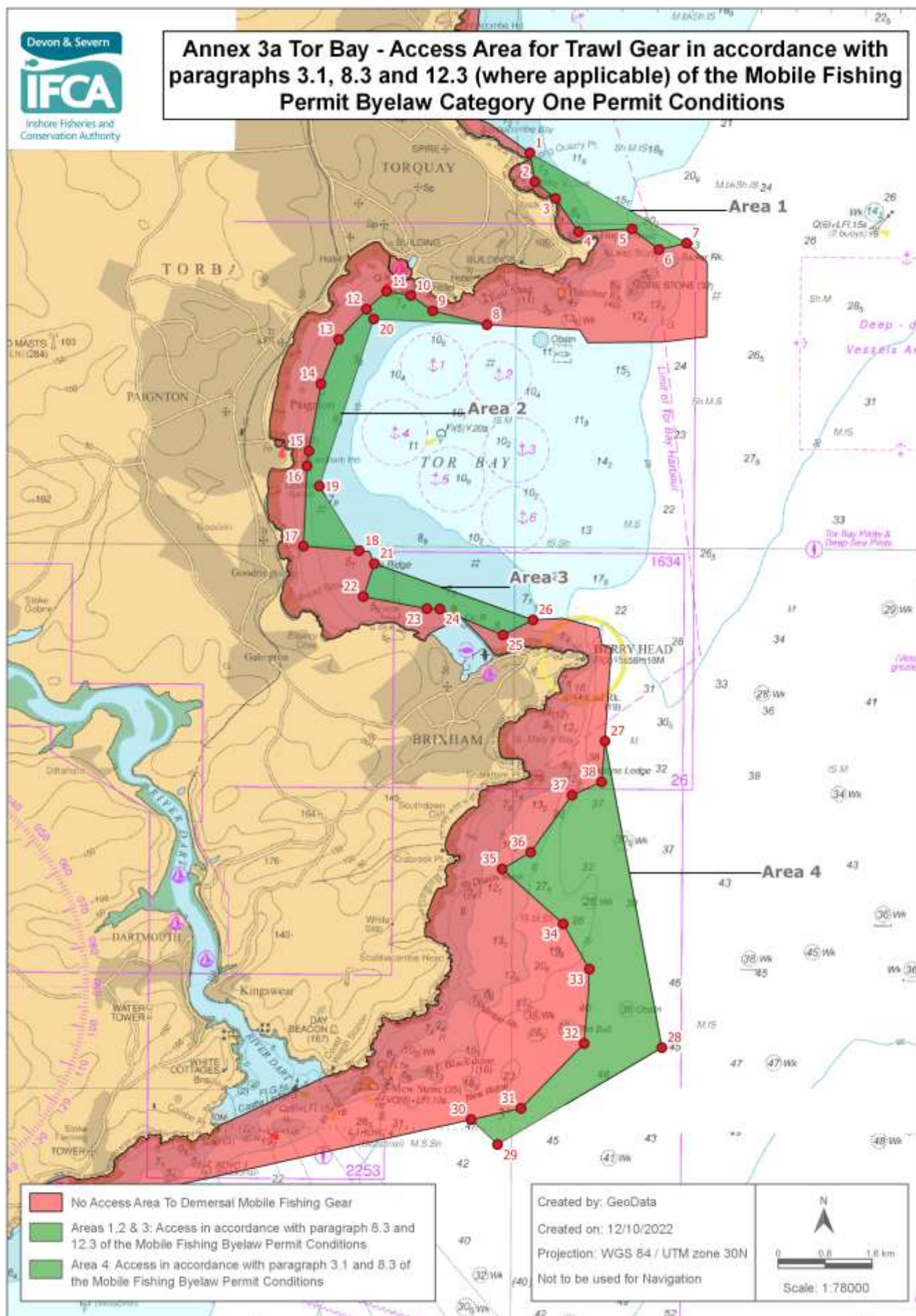
All positions are expressed in degrees, decimal minutes (DDMM) and shall be measured according to the WGS84 Geographic Co-ordinate System

Version control: Mobile Fishing Category 1 (At sea) Annexes – For Formal Consultation - November 2022

Annex 3 Tor Bay – No Access Area to Demersal Mobile Fishing Gear

No access area to Demersal Mobile Fishing Gear within the D&S IFCA District outlined by the following Points plotted sequentially from Point 1 to Point 32, then returning to Point 1. The landward boundary follows Mean High Water.

Point Number	Latitude	Longitude
1	50° 30.733 N	003° 30.585 W
2	50° 30.733 N	003° 30.467 W
3	50° 29.267 N	003° 30.659 W
4	50° 29.120 N	003° 30.541 W
5	50° 28.950 N	003° 30.700 W
6	50° 28.878 N	003° 30.420 W
7	50° 28.612 N	003° 29.832 W
8	50° 27.775 N	003° 27.685 W
9	50° 27.792 N	003° 27.568 W
10	50° 27.615 N	003° 27.270 W
11	50° 26.933 N	003° 27.267 W
12	50° 26.882 N	003° 27.911 W
13	50° 26.871 N	003° 28.979 W
14	50° 26.989 N	003° 29.100 W
15	50° 27.030 N	003° 30.432 W
16	50° 27.075 N	003° 32.062 W
17	50° 25.538 N	003° 32.827 W
18	50° 24.949 N	003° 32.258 W
19	50° 24.938 N	003° 32.098 W
20	50° 24.831 N	003° 32.035 W
21	50° 24.321 N	003° 29.741 W
22	50° 24.338 N	003° 29.307 W
23	50° 24.250 N	003° 28.796 W
24	50° 24.096 N	003° 28.745 W
25	50° 24.067 N	003° 28.613 W
26	50° 23.212 N	003° 28.696 W
27	50° 20.400 N	003° 27.850 W
28	50° 19.500 N	003° 30.200 W
29	50° 19.727 N	003° 30.583 W
30	50° 18.774 N	003° 37.047 W
Landward boundary follows Mean High Water to Point 31		
31	50° 19.648 N	003° 34.220 W
32	50° 20.121 N	003° 32.648 W
Landward boundary follows Mean High Water to Point 1		



All positions are expressed in degrees, decimal minutes (DDMM) and shall be measured according to the WGS84 Geographic Co-ordinate System

Version control: Mobile Fishing Category 1 (At sea) Annexes – For Formal Consultation - November 2022

Annex 3a Tor Bay – Access Areas 1, 2, 3 and 4 for Trawl Gear in accordance with Paragraphs 3.1, 8.3 and 12.3 (where applicable) of the Mobile Fishing Permit Byelaw Category One Permit Conditions,

Area 1

Access areas for Trawl Gear within the D&S IFCA District outlined by the following Points plotted sequentially from Point 1 to Point 7, then returning to Point 1.

Point Number	Latitude	Longitude
1	50° 28.612 N	003° 29.832 W
2	50° 28.347 N	003° 29.755 W
3	50° 28.194 N	003° 29.459 W
4	50° 27.891 N	003° 29.125 W
5	50° 27.920 N	003° 28.353 W
6	50° 27.731 N	003° 27.963 W
7	50° 27.792 N	003° 27.568 W

Area 2

Access areas for Trawl Gear within the D&S IFCA District outlined by the following Points plotted sequentially from Point 8 to Point 20, then returning to Point 8.

Point Number	Latitude	Longitude
8	50° 27.030 N	003° 30.432 W
9	50° 27.154 N	003° 31.214 W
10	50° 27.293 N	003° 31.533 W
11	50° 27.331 N	003° 31.878 W
12	50° 27.164 N	003° 32.169 W
13	50° 26.886 N	003° 32.564 W
14	50° 26.476 N	003° 32.814 W
15	50° 25.858 N	003° 32.980 W
16	50° 25.721 N	003° 33.007 W
17	50° 24.984 N	003° 33.050 W
18	50° 24.946 N	003° 32.250 W
19	50° 25.537 N	003° 32.827 W
20	50° 27.075 N	003° 32.062 W

Area 3

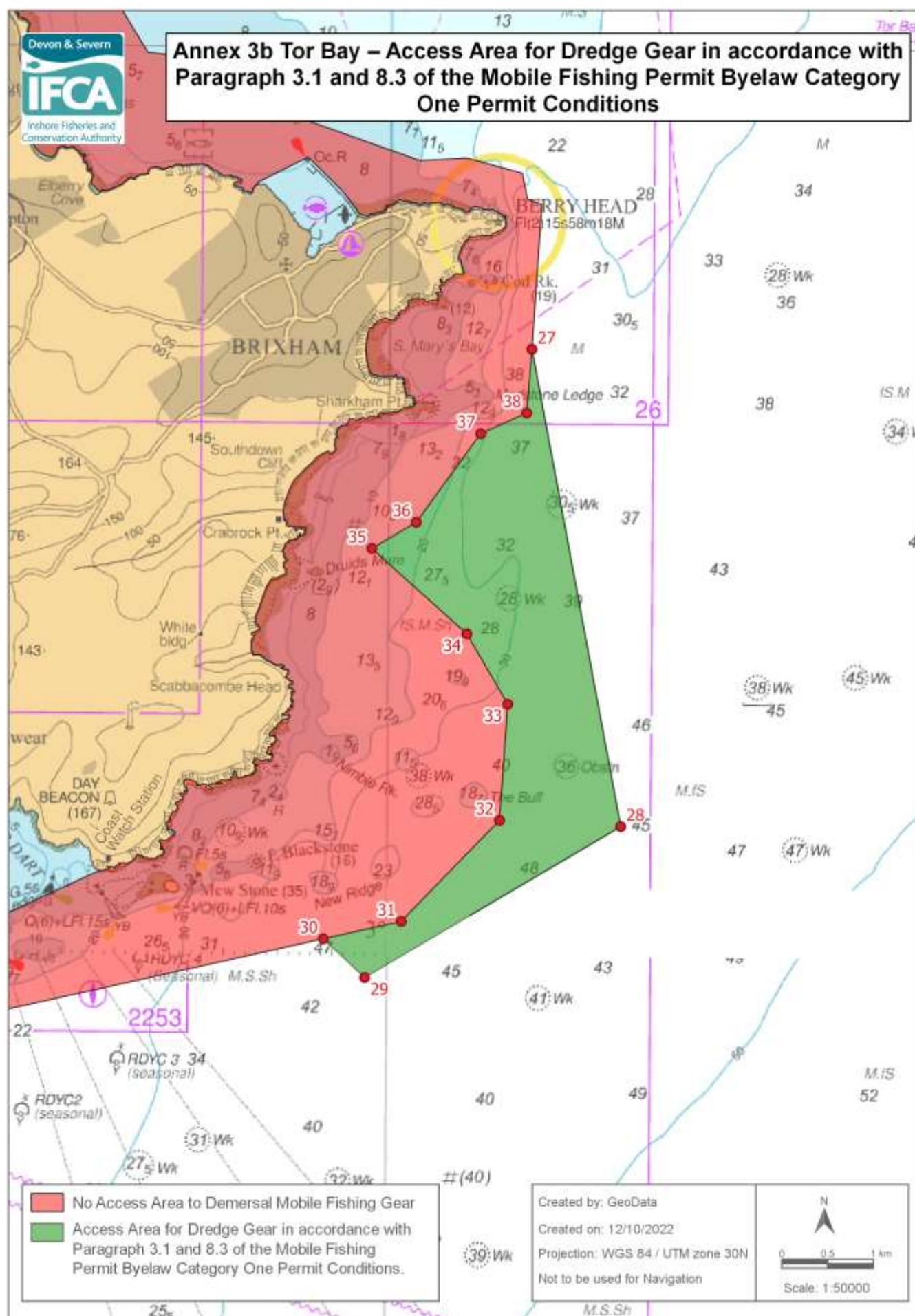
Access areas for Trawl Gear within the D&S IFCA District outlined by the following Points plotted sequentially from Point 21 to Point 26, then returning to Point 21.

Point Number	Latitude	Longitude
21	50° 24.828 N	003° 32.027 W
22	50° 24.525 N	003° 32.183 W
23	50° 24.418 N	003° 31.268 W
24	50° 24.416 N	003° 31.082 W
25	50° 24.181 N	003° 30.171 W
26	50° 24.321 N	003° 29.741 W

Area 4

Access areas for Trawl Gear within the D&S IFCA District outlined by the following Points plotted sequentially from Point 27 to Point 38, then returning to Point 27.

Point Number	Latitude	Longitude
27	50° 23.212 N	003° 28.696 W
28	50° 20.400 N	003° 27.850 W
29	50° 19.500 N	003° 30.200 W
30	50° 19.727 N	003° 30.583 W
31	50° 19.833 N	003° 29.867 W
32	50° 20.433 N	003° 28.967 W
33	50° 21.118 N	003° 28.898 W
34	50° 21.531 N	003° 29.279 W
35	50° 22.031 N	003° 30.160 W
36	50° 22.187 N	003° 29.752 W
37	50° 22.713 N	003° 29.163 W
38	50° 22.836 N	003° 28.740 W



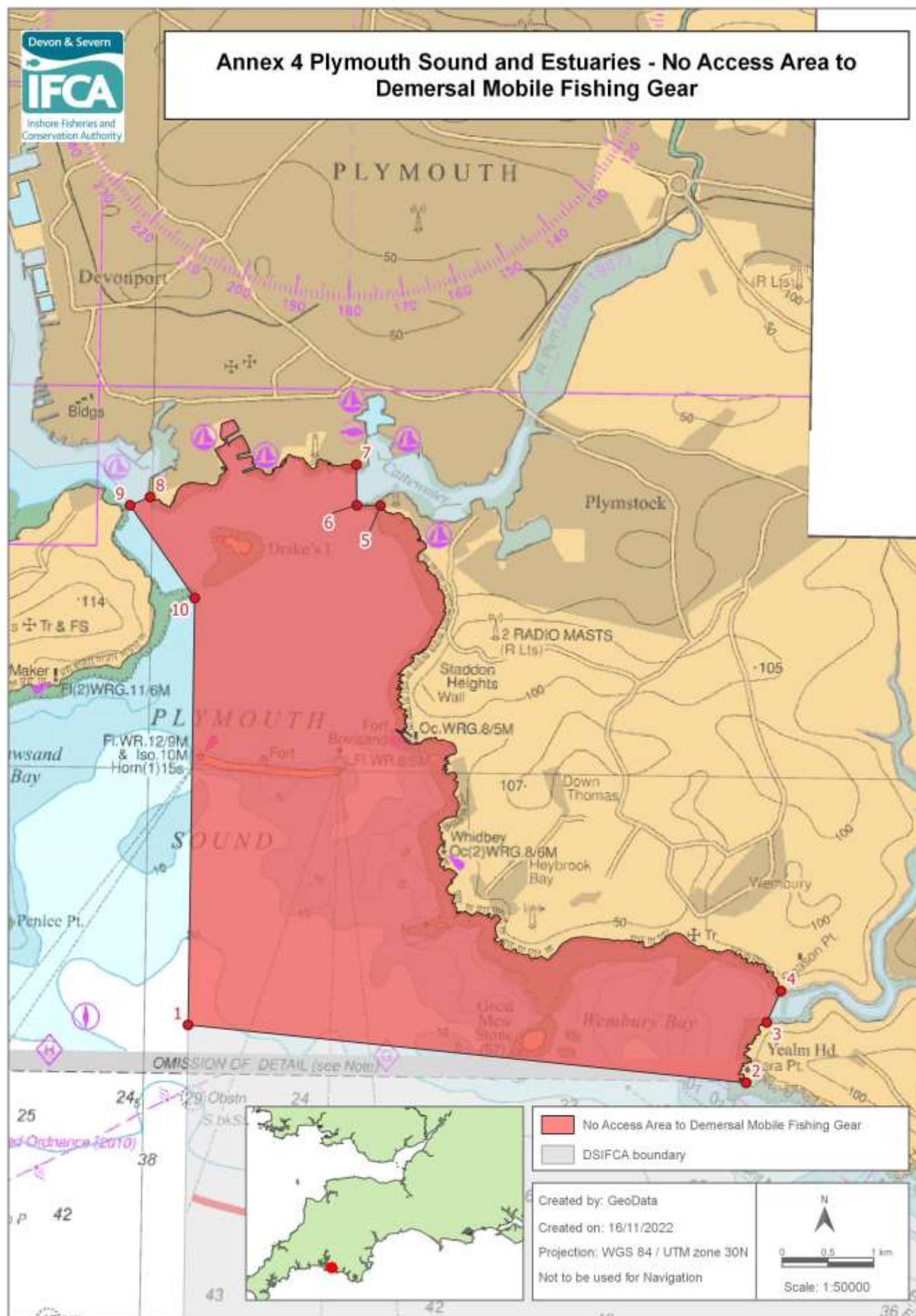
All positions are expressed in degrees, decimal minutes (DDM) and shall be measured according to the WGS84 Geographic Co-ordinate System

Version control: Mobile Fishing Category 1 (At sea) Annexes – For Formal Consultation - November 2022

Annex 3b Tor Bay – Access area for Dredge Gear in accordance with Paragraph 3.1 and 8.3 of the Mobile Fishing Permit Byelaw Category One Permit Conditions

Access area for Dredge Gear within the D&S IFCA District outlined by the following Points plotted sequentially from Point 27 to Point 38, then returning to Point 27.

Point Number	Latitude	Longitude
27	50° 23.212 N	003° 28.696 W
28	50° 20.400 N	003° 27.850 W
29	50° 19.500 N	003° 30.200 W
30	50° 19.727 N	003° 30.583 W
31	50° 19.833 N	003° 29.867 W
32	50° 20.433 N	003° 28.967 W
33	50° 21.118 N	003° 28.898 W
34	50° 21.531 N	003° 29.279 W
35	50° 22.031 N	003° 30.160 W
36	50° 22.187 N	003° 29.752 W
37	50° 22.713 N	003° 29.163 W
38	50° 22.836 N	003° 28.740 W



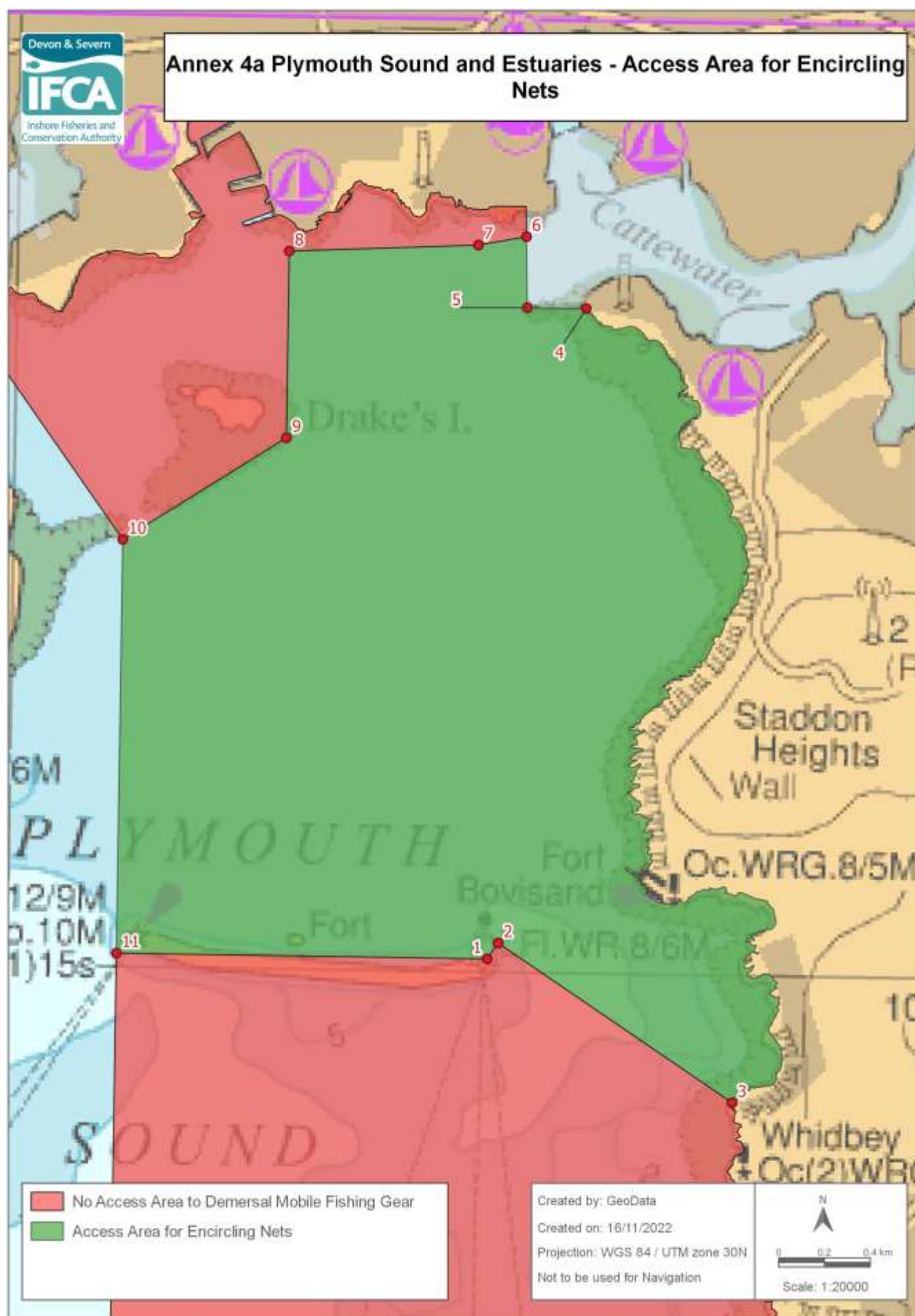
All positions are expressed in degrees, decimal minutes (DDMM) and shall be measured according to the WGS84 Geographic Co-ordinate System

Version control: Mobile Fishing Category 1 (At sea) Annexes – For Formal Consultation - November 2022

Annex 4 – Plymouth Sound and Estuaries - No Access for Demersal Mobile Fishing Gear

No access area to Demersal Mobile Fishing Gear within the D&S IFCA District outlined by the following Points plotted sequentially from Point 1 to Point 10, then returning to Point 1. The landward boundary follows Mean High Water.

Point Number	Latitude	Longitude
1	50° 18.484 N	004° 09.600 W
2	50° 18.192 N	004° 04.458 W
Landward boundary follows Mean High Water to Point 3		
3	50° 18.550 N	004° 04.275 W
4	50° 18.736 N	004° 04.148 W
Landward boundary follows Mean High Water to Point 5		
5	50° 21.562 N	004° 07.902 W
6	50° 21.562 N	004° 08.120 W
7	50° 21.801 N	004° 08.130 W
Landward boundary follows Mean High Water to Point 8		
8	50° 21.592 N	004° 10.026 W
9	50° 21.541 N	004° 10.208 W
10	50° 21.000 N	004° 09.600 W



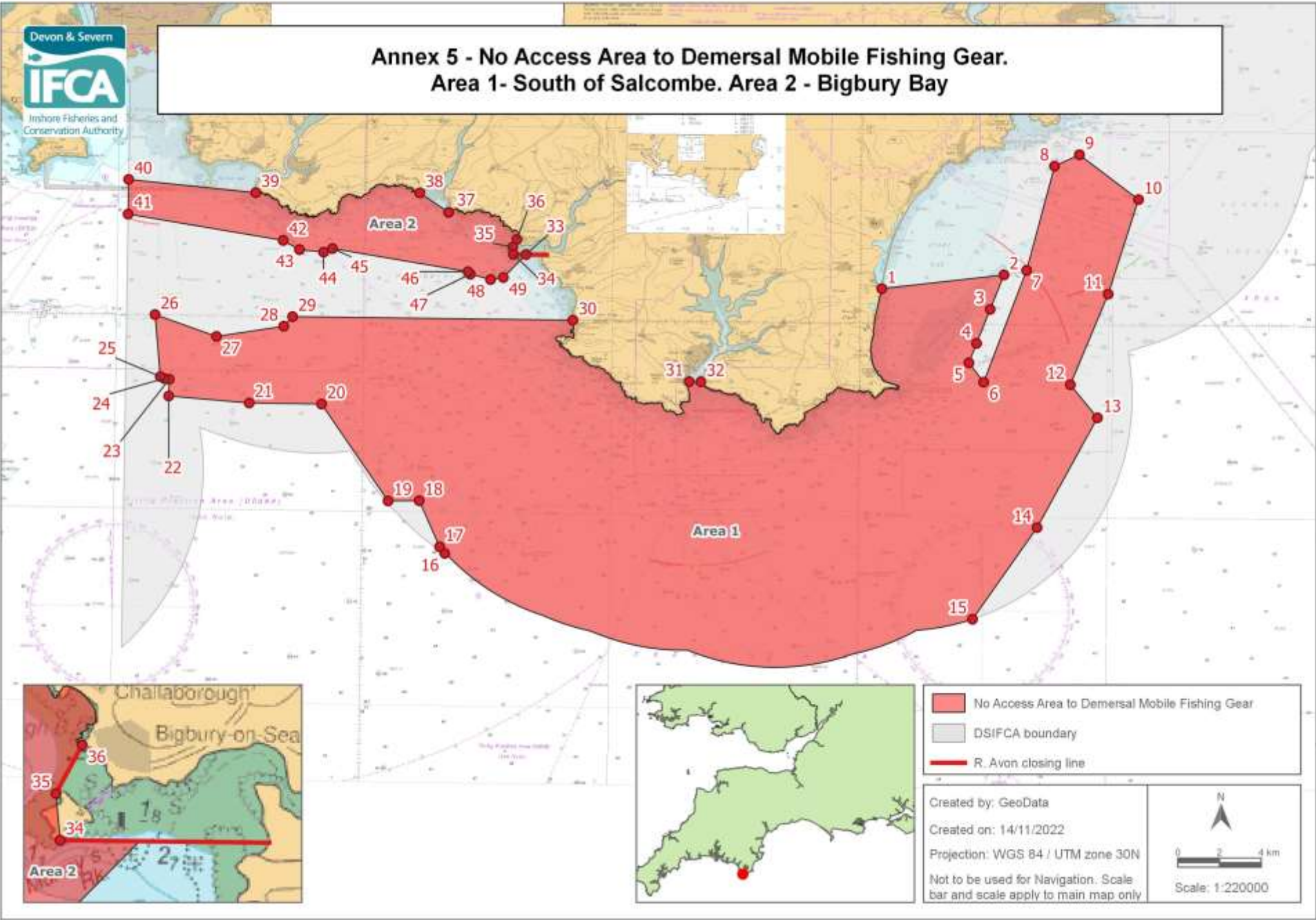
All positions are expressed in degrees, decimal minutes (DDMM) and shall be measured according to the WGS84 Geographic Co-ordinate System

Version control: Mobile Fishing Category 1 (At sea) Annexes – For Formal Consultation - November 2022

Annex 4a Plymouth Sound and Estuaries - Access area for Encircling Nets

Access area for Encircling Nets within the D&S IFCA District outlined by the following Points plotted sequentially from Point 1 to Point 11, then returning to Point 1. The landward boundary follows Mean High Water.

Point Number	Latitude	Longitude
1	50° 20.023 N	004° 08.231 W
2	50° 20.061 N	004° 08.192 W
3	50° 19.692 N	004° 07.319 W
Landward boundary follows Mean High Water to Point 4		
4	50° 21.562 N	004° 07.902 W
5	50° 21.562 N	004° 08.120 W
6	50° 21.730 N	004° 08.127 W
7	50° 21.708 N	004° 08.304 W
8	50° 21.687 N	004° 09.002 W
9	50° 21.246 N	004° 09.002 W
10	50° 21.000 N	004° 09.600 W
11	50° 20.023 N	004° 09.600 W



Annex 5 – No Access Area to Demersal Mobile Fishing Gear.

**Area 1
South of Salcombe**

No access area to Demersal Mobile Fishing Gear within the D&S IFCA District outlined by the following Points plotted sequentially from Point 1 to Point 32, then returning to Point 1. The landward boundary follows Mean High Water.

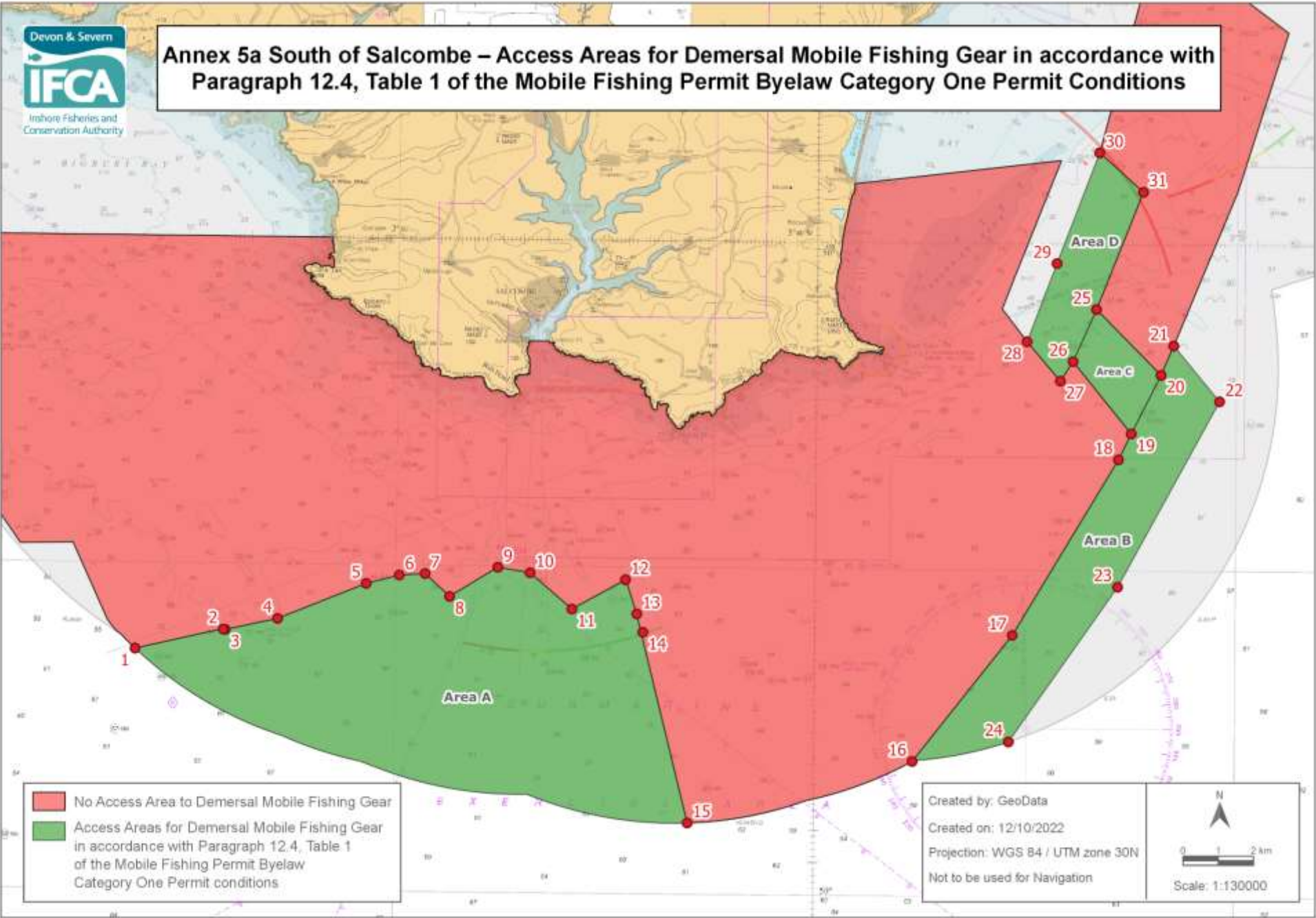
Point Number	Latitude	Longitude
1	50° 15.897 N	003° 39.141 W
2	50° 16.278 N	003° 34.212 W
3	50° 15.384 N	003° 34.758 W
4	50° 14.502 N	003° 35.298 W
5	50° 13.998 N	003° 35.598 W
6	50° 13.500 N	003° 35.000 W
7	50° 16.400 N	003° 33.300 W
8	50° 19.100 N	003° 32.200 W
9	50° 19.400 N	003° 31.200 W
10	50° 18.250 N	003° 28.800 W
11	50° 15.800 N	003° 30.000 W
12	50° 13.450 N	003° 31.500 W
13	50° 12.600 N	003° 30.400 W
14	50° 09.750 N	003° 32.800 W
15	50° 07.368 N	003° 35.373 W
Then follow the Six Nautical Mile Limit to Point 16		
16	50° 08.930 N	003° 56.640 W
17	50° 09.100 N	003° 56.850 W
18	50° 10.284 N	003° 57.696 W
19	50° 10.267 N	003° 58.950 W
20	50° 12.750 N	004° 01.683 W
21	50° 12.750 N	004° 04.600 W
22	50° 12.900 N	004° 07.850 W
23	50° 13.334 N	004° 07.836 W
24	50° 13.352 N	004° 08.043 W
25	50° 13.400 N	004° 08.200 W
26	50° 15.000 N	004° 08.450 W
27	50° 14.460 N	004° 05.958 W
28	50° 14.748 N	004° 03.251 W
29	50° 15.000 N	004° 02.900 W
30	50° 15.000 N	003° 51.590 W
Landward boundary follows Mean High Water to Point 31		
31	50° 13.444 N	003° 46.871 W
32	50° 13.444 N	003° 46.402 W
Landward boundary follows Mean High Water to Point 1		

Annex 5 – No Access Area to Demersal Mobile Fishing Gear

Area 2 Bigbury Bay

No access area to vessels using Demersal Mobile Fishing Gear within the D&S IFCA District outlined by the following Points plotted sequentially from Point 33 to Point 49, then returning to Point 33. The landward boundary follows Mean High Water.

Point Number	Latitude	Longitude
33	50° 16.684 N	003° 53.508 W
34	50° 16.684 N	003° 54.018 W
35	50° 16.876 N	003° 54.049 W
36	50° 17.077 N	003° 53.884 W
Landward boundary follows Mean High Water to Point 37		
37	50° 17.750 N	003° 56.657 W
38	50° 18.243 N	003° 57.834 W
Landward boundary follows Mean High Water to Point 39		
39	50° 18.191 N	004° 04.460 W
40	50° 18.484 N	004° 09.600 W
41	50° 17.588 N	004° 09.600 W
42	50° 16.967 N	004° 03.323 W
43	50° 16.734 N	004° 02.658 W
44	50° 16.678 N	004° 01.685 W
45	50° 16.775 N	004° 01.328 W
46	50° 16.222 N	003° 55.848 W
47	50° 16.158 N	003° 55.749 W
48	50° 16.026 N	003° 54.930 W
49	50° 16.083 N	003° 54.417 W



Annex 5a – Access areas (A, B, C and D) for Demersal Mobile Fishing Gear in accordance with Paragraph 12.4, Table 1 of the Mobile Fishing Permit Byelaw Category One Permit Conditions.

Area A

Access areas for Demersal Mobile Fishing Gear within the D&S IFCA District outlined by the following Points plotted sequentially from Point 1 to Point 15, then returning to Point 1.

Point Number	Latitude	Longitude
1	50° 08.669 N	003° 56.186 W
2	50° 08.977 N	003° 54.092 W
3	50° 08.973 N	003° 54.046 W
4	50° 09.150 N	003° 52.800 W
5	50° 09.702 N	003° 50.700 W
6	50° 09.835 N	003° 49.915 W
7	50° 09.863 N	003° 49.300 W
8	50° 09.517 N	003° 48.711 W
9	50° 09.972 N	003° 47.568 W
10	50° 09.892 N	003° 46.798 W
11	50° 09.343 N	003° 45.795 W
12	50° 09.800 N	003° 44.525 W
13	50° 09.279 N	003° 44.248 W
14	50° 09.000 N	003° 44.100 W
15	50° 06.084 N	003° 43.000 W
Then follow the Six Nautical Mile Limit to Point 1		

Area B

Access areas for Demersal Mobile Fishing Gear within the D&S IFCA District outlined by the following Points plotted sequentially from Point 16 to Point 24, then returning to Point 16.

Point Number	Latitude	Longitude
16	50° 07.057 N	003° 37.660 W
17	50° 09.000 N	003° 35.300 W
18	50° 11.700 N	003° 32.800 W
19	50° 12.100 N	003° 32.500 W
20	50° 13.000 N	003° 31.800 W
21	50° 13.450 N	003° 31.500 W
22	50° 12.600 N	003° 30.400 W
23	50° 09.750 N	003° 32.800 W
24	50° 07.368 N	003° 35.373 W
Then follow the Six Nautical Mile Limit to Point 16		

Area C

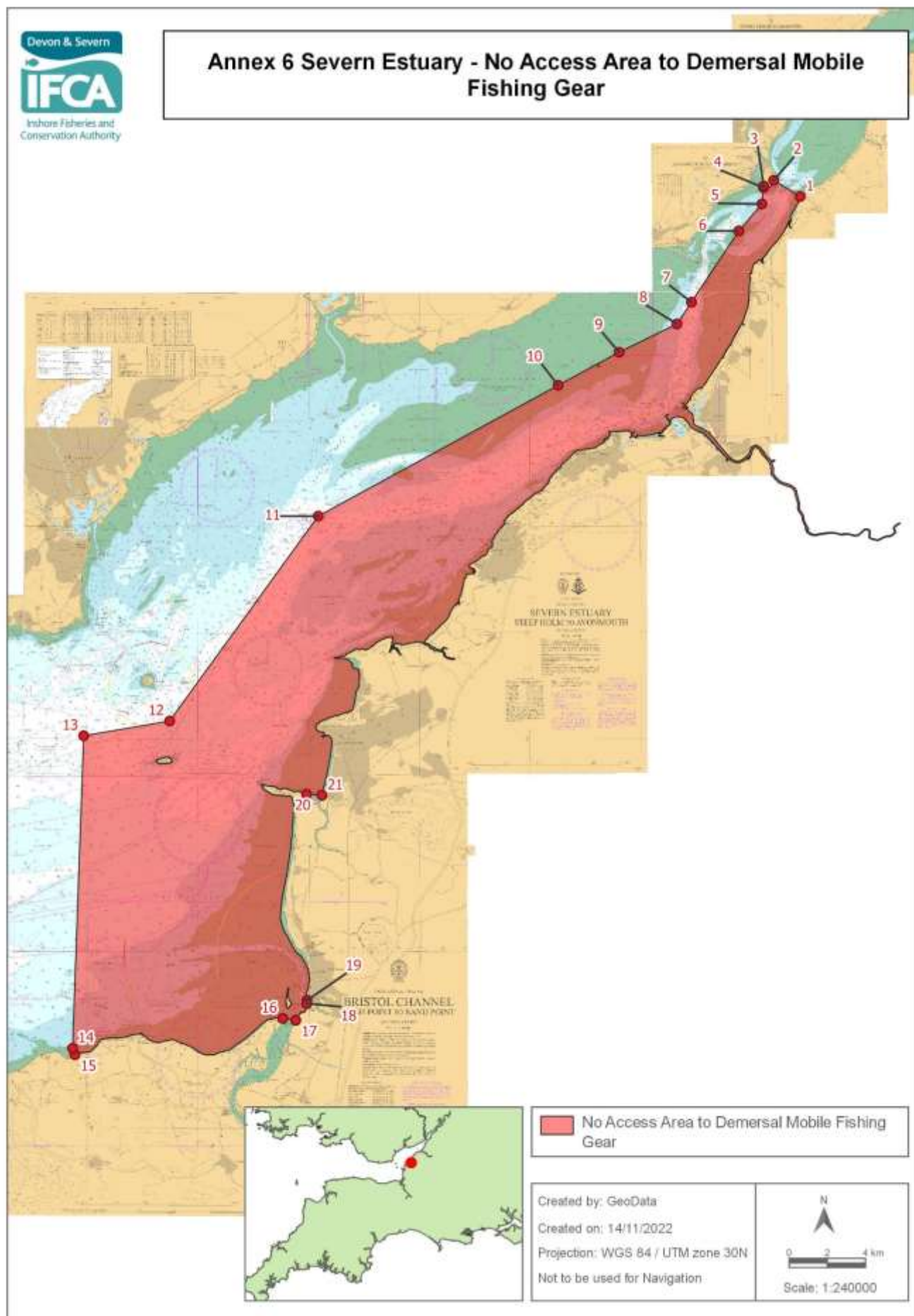
Access areas for Demersal Mobile Fishing Gear within the D&S IFCA District outlined by the following Points plotted sequentially from Point 19 to Point 26, then returning to Point 19.

Point Number	Latitude	Longitude
19	50° 12.100 N	003° 32.500 W
20	50° 13.000 N	003° 31.800 W
25	50° 14.000 N	003° 33.350 W
26	50° 13.200 N	003° 33.900 W

Area D

Access areas for Demersal Mobile Fishing Gear within the D&S IFCA District outlined by the following Points plotted sequentially from Point 25 to Point 31, then returning to Point 25.

Point Number	Latitude	Longitude
25	50° 14.000 N	003° 33.350 W
26	50° 13.200 N	003° 33.900 W
27	50° 12.900 N	003° 34.200 W
28	50° 13.500 N	003° 35.000 W
29	50° 14.700 N	003° 34.300 W
30	50° 16.400 N	003° 33.300 W
31	50° 15.800 N	003° 32.250 W



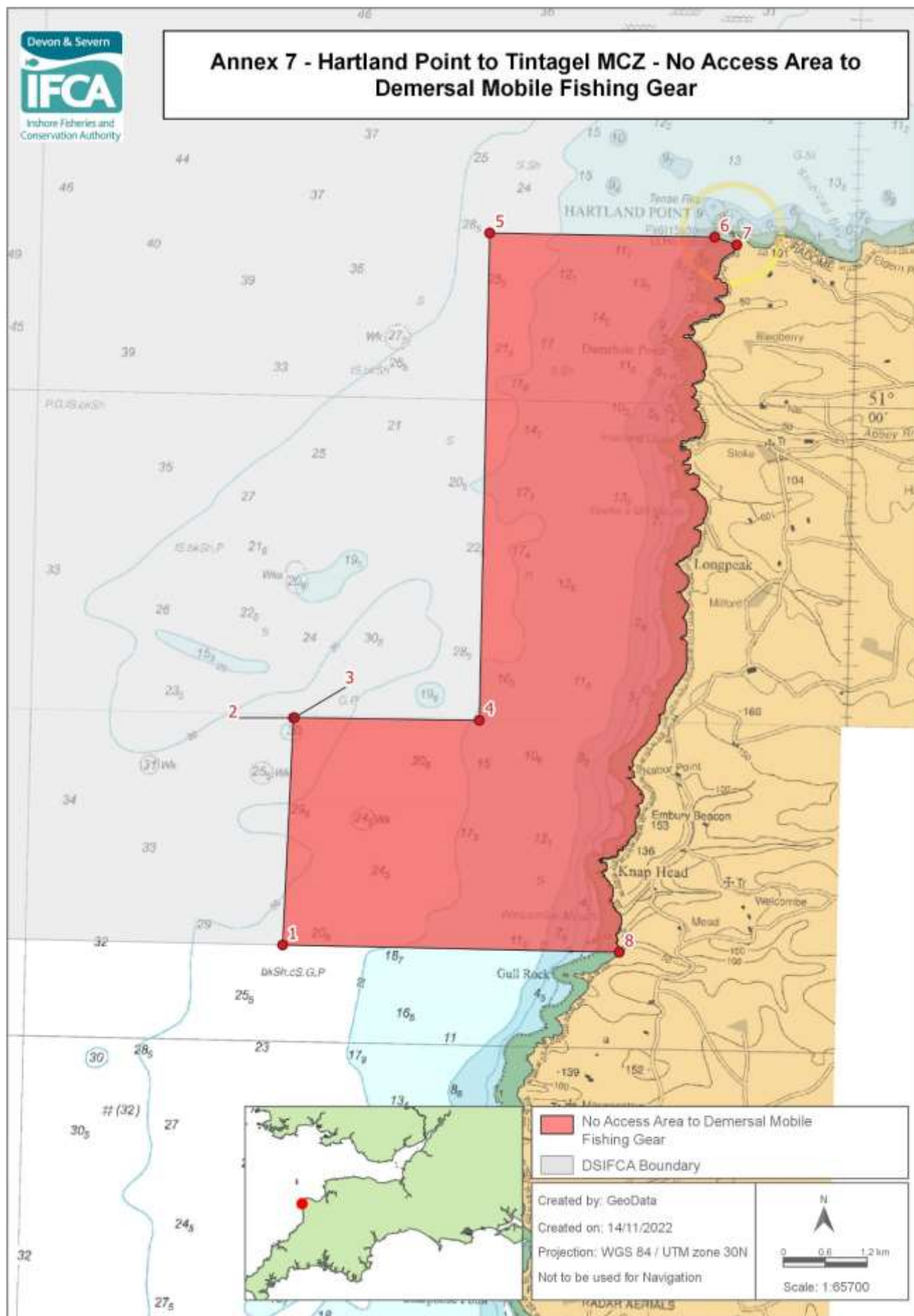
All Positions are expressed in degrees, decimal minutes (DDM) and shall be measured according to the WGS84 Geographic Co-ordinate System

Version control: Mobile Fishing Category 1 (At sea) Annexes – For Formal Consultation - November 2022

Annex 6 Severn Estuary – No Access to Demersal Mobile Fishing Gear

No access area to Demersal Mobile Fishing Gear within the D&S IFCA District outlined by the following Points plotted sequentially from Point 1 to Point 21, then returning to Point 1. The landward boundary follows Mean High Water.

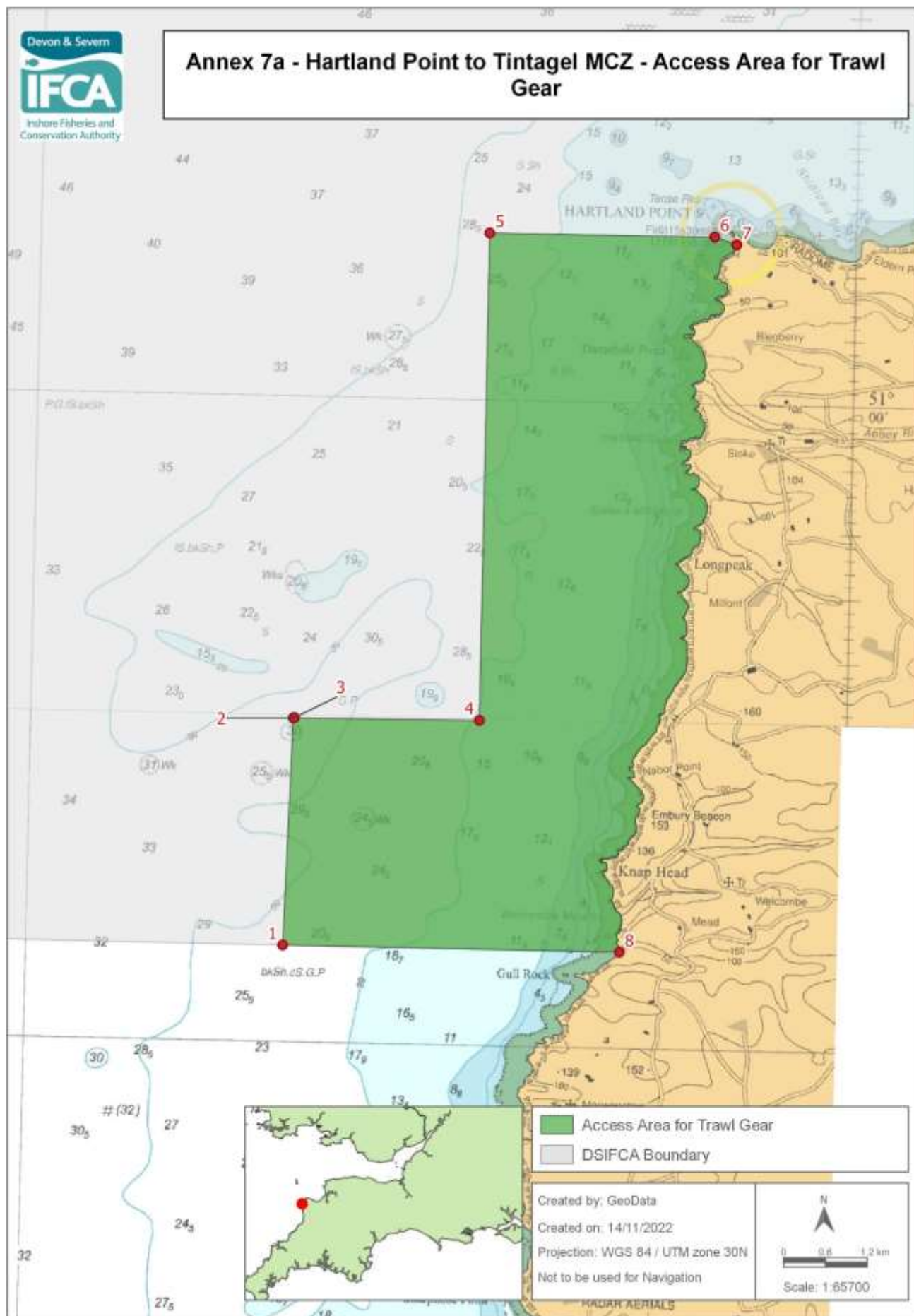
Point Number	Latitude	Longitude
1	51° 36.310 N	002° 37.696 W
2	51° 36.769 N	002° 38.898 W
Landward boundary follows Mean High Water to Point 3		
3	51° 36.608 N	002° 39.358 W
4	51° 36.568 N	002° 39.364 W
5	51° 36.102 N	002° 39.436 W
6	51° 35.342 N	002° 40.494 W
7	51° 33.335 N	002° 42.655 W
8	51° 32.722 N	002° 43.314 W
9	51° 31.927 N	002° 45.944 W
10	51° 30.997 N	002° 48.710 W
11	51° 27.306 N	002° 59.584 W
12	51° 21.512 N	003° 06.293 W
13	51° 21.092 N	003° 10.173 W
14	51° 12.256 N	003° 10.641 W
15	51° 12.072 N	003° 10.532 W
Landward boundary follows Mean High Water to Point 16		
16	51° 13.106 N	003° 01.177 W
17	51° 13.056 N	003° 00.595 W
Landward boundary follows Mean High Water to Point 18		
18	51° 13.528 N	003° 00.091 W
19	51° 13.618 N	003° 00.091 W
Landward boundary follows Mean High Water to Point 20		
20	51° 19.450 N	003° 00.108 W
21	51° 19.417 N	002° 59.418 W
Landward boundary follows Mean High Water to Point 1		



Annex 7 – Hartland Point to Tintagel MCZ – No Access Area to Demersal Mobile Fishing Gear

No access area to Demersal Mobile Fishing Gear within the D&S IFCA District outlined by the following Points plotted sequentially from Point 1 to Point 8, then returning to Point 1. The landward boundary follows Mean High Water.

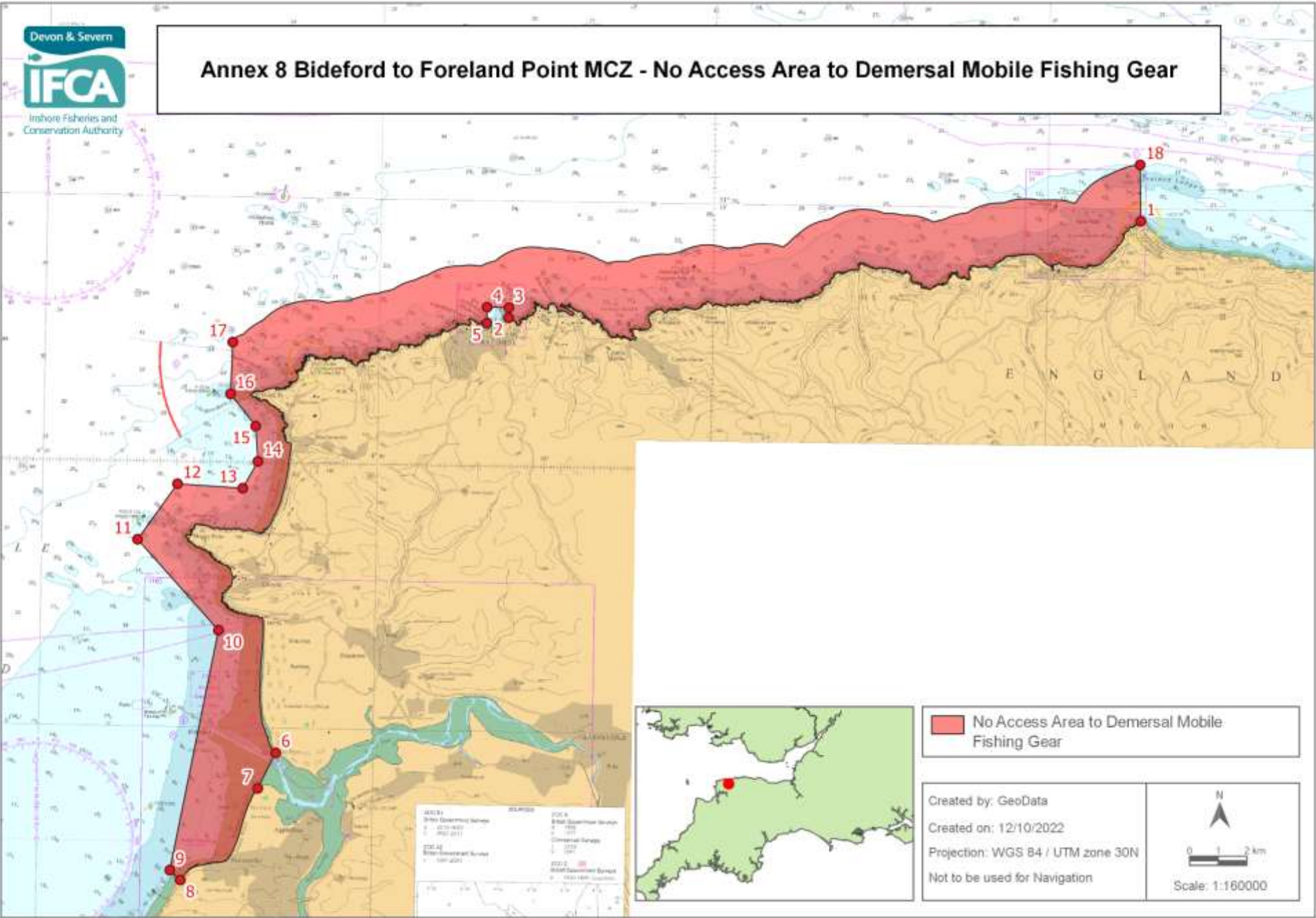
Point Number	Latitude	Longitude
1	50° 55.738 N	004° 36.852 W
2	50° 57.498 N	004° 36.781 W
3	50° 57.500 N	004° 36.768 W
4	50° 57.510 N	004° 34.503 W
5	51° 01.283 N	004° 34.503 W
6	51° 01.289 N	004° 31.741 W
7	51° 01.232 N	004° 31.468 W
Landward boundary follows Mean High Water to Point 8		
8	50° 55.738 N	004° 32.729 W



Annex 7a – Hartland Point to Tintagel MCZ – Access Area for Trawl Gear

Access area for Trawl Gear within the D&S IFCA District outlined by the following Points plotted sequentially from Point 1 to Point 8, then returning to Point 1. The landward boundary follows Mean High Water.

Point Number	Latitude	Longitude
1	50° 55.738 N	004° 36.852 W
2	50° 57.498 N	004° 36.781 W
3	50° 57.500 N	004° 36.768 W
4	50° 57.510 N	004° 34.503 W
5	51° 01.283 N	004° 34.503 W
6	51° 01.289 N	004° 31.741 W
7	51° 01.232 N	004° 31.468 W
Landward boundary follows Mean High Water to Point 8		
8	50° 55.738 N	004° 32.729 W



Annex 8 – Bideford to Foreland Point MCZ – No Access to Demersal Mobile Fishing Gear

No access area to Demersal Mobile Fishing Gear within the D&S IFCA District outlined by the following Points plotted sequentially from Point 1 to Point 18, then returning to point 1. The landward boundary follows Mean High Water. The seaward boundary between Points 17 and 18 follows at a distance of 1nm from the Mean High Water line.

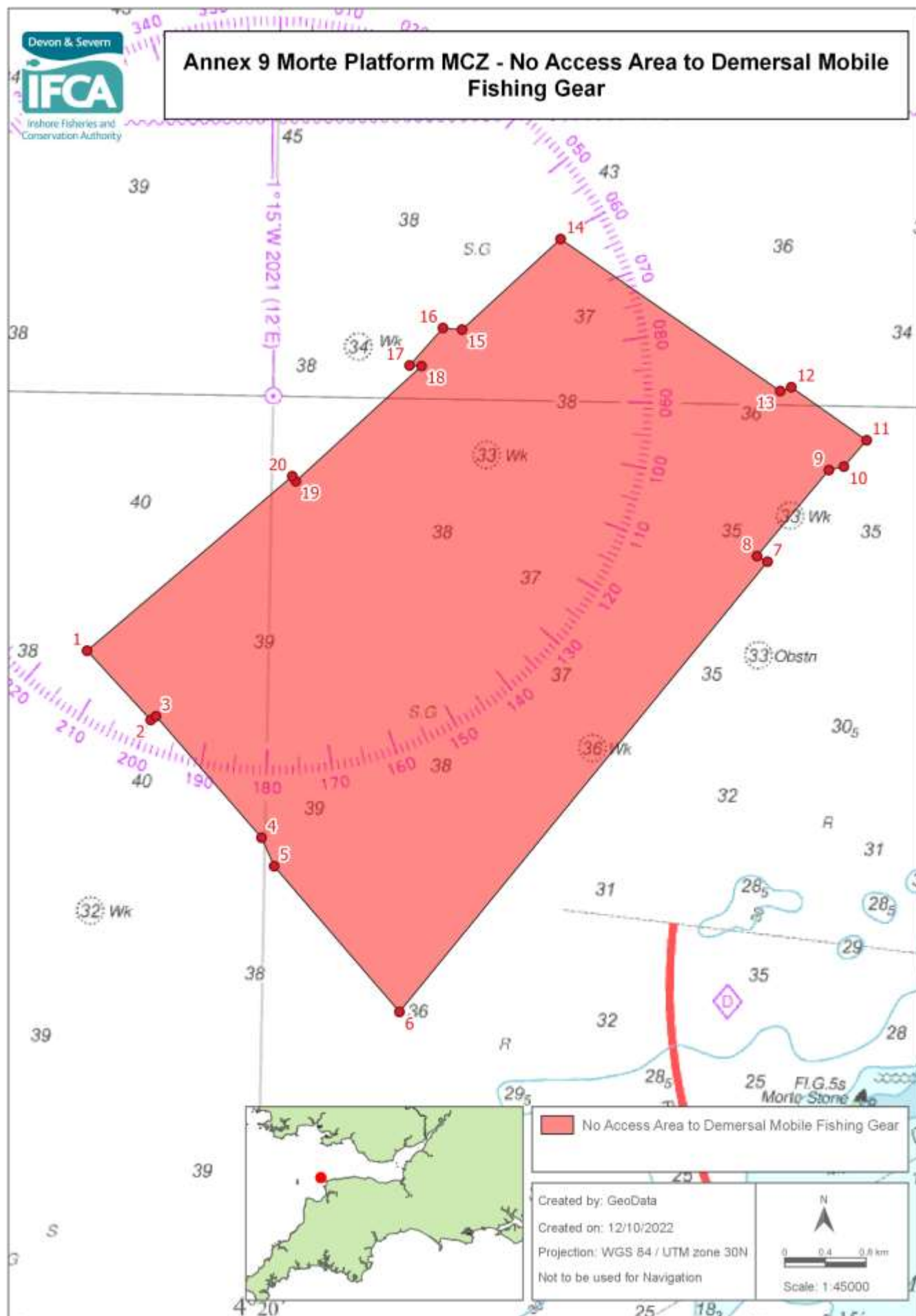
Point Number	Latitude	Longitude
1	51° 14.764 N	003° 47.204 W
Landward boundary follows Mean High Water to Point 2		
2	51° 12.792 N	004° 06.130 W
3	51° 12.980 N	004° 06.126 W
4	51° 12.983 N	004° 06.778 W
5	51° 12.683 N	004° 06.778 W
Landward boundary follows Mean High Water to Point 6		
6	51° 04.524 N	004° 12.897 W
7	51° 03.849 N	004° 13.416 W
Landward boundary follows Mean High Water to Point 8		
8	51° 02.098 N	004° 15.685 W
9	51° 02.281 N	004° 16.001 W
10	51° 06.816 N	004° 14.667 W
11	51° 08.505 N	004° 17.135 W
12	51° 09.563 N	004° 15.967 W
13	51° 09.499 N	004° 14.015 W
14	51° 10.011 N	004° 13.570 W
15	51° 10.676 N	004° 13.655 W
16	51° 11.274 N	004° 14.426 W
17	51° 12.250 N	004° 14.385 W
Seaward boundary follows a one nautical mile line from Mean High Water to Point 18		
18	51° 15.825 N	003° 47.244 W



Annex 8a – Bideford to Foreland Point MCZ – Access Area for Demersal Mobile Fishing Gear

Access area for Demersal Mobile Fishing Gear within the D&S IFCA District outlined by the following Points plotted sequentially from Point 1 to Point 7, then returning to Point 1. The landward boundary follows Mean High Water

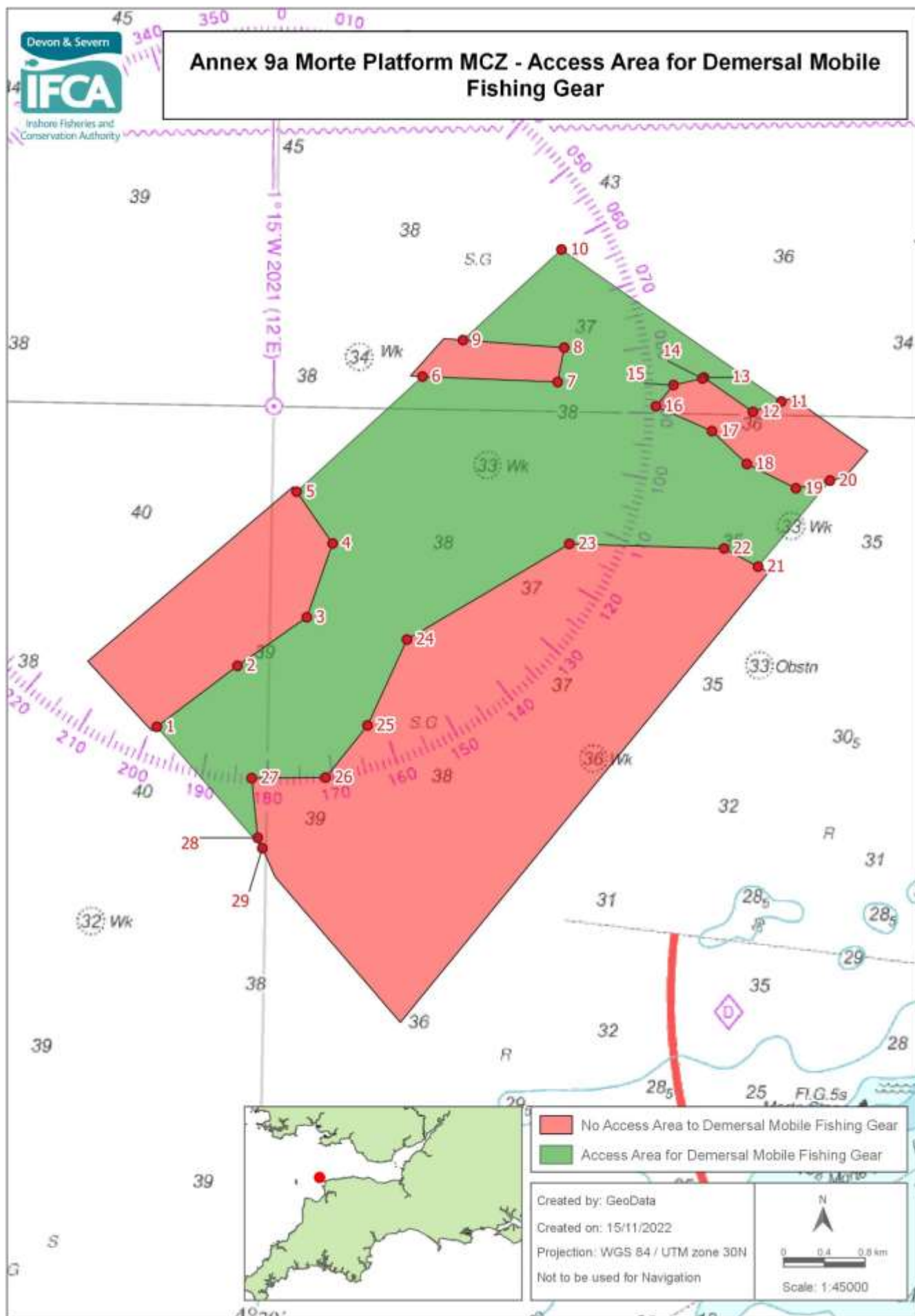
Point Number	Latitude	Longitude
1	51° 02.098 N	004° 15.685 W
2	51° 02.281 N	004° 16.001 W
3	51° 06.816 N	004° 14.667 W
4	51° 07.341 N	004° 15.434 W
5	51° 07.351 N	004° 14.561 W
Landward boundary follows Mean High Water to Point 6		
6	51° 04.524 N	004° 12.897 W
7	51° 03.849 N	004° 13.416 W
Landward boundary follows Mean High Water to Point 1		



Annex 9 – Morte Platform MCZ – No Access Area to Demersal Mobile Fishing Gear

No access area to Demersal Mobile Fishing Gear within the D&S IFCA District outlined by the following Points plotted sequentially from Point 1 to Point 20, then returning to Point 1.

Point Number	Latitude	Longitude
1	51° 13.622 N	004° 21.535 W
2	51° 13.261 N	004° 20.986 W
3	51° 13.281 N	004° 20.942 W
4	51° 12.647 N	004° 20.032 W
5	51° 12.497 N	004° 19.921 W
6	51° 11.737 N	004° 18.840 W
7	51° 14.158 N	004° 15.797 W
8	51° 14.187 N	004° 15.886 W
9	51° 14.650 N	004° 15.291 W
10	51° 14.670 N	004° 15.165 W
11	51° 14.811 N	004° 14.977 W
12	51° 15.086 N	004° 15.621 W
13	51° 15.064 N	004° 15.714 W
14	51° 15.851 N	004° 17.594 W
15	51° 15.361 N	004° 18.414 W
16	51° 15.368 N	004° 18.575 W
17	51° 15.166 N	004° 18.852 W
18	51° 15.164 N	004° 18.751 W
19	51° 14.541 N	004° 19.796 W
20	51° 14.567 N	004° 19.827 W



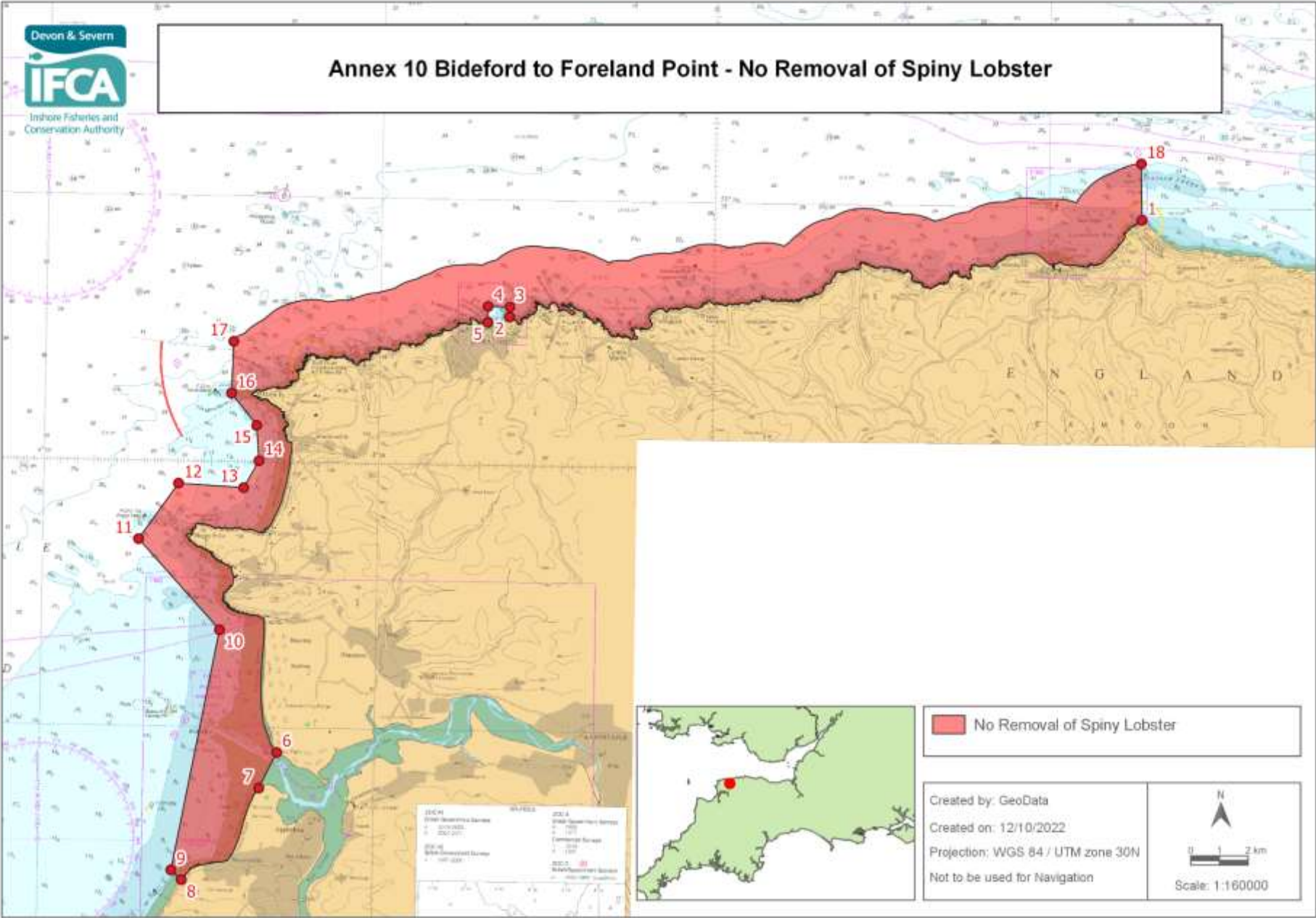
All positions are expressed in degrees, decimal minutes (DDMM), and shall be measured according to the WGS 84 Geographic Co-ordinate System

Version control: Mobile Fishing Category 1 (At sea) Annexes – For Formal Consultation - November 2022

Annex 9a – Morte Platform MCZ – Access Area for Demersal Mobile Fishing Gear

Access Area to Demersal Mobile Fishing Gear within the D&S IFCA District outlined by the following Points plotted sequentially from Point 1 to Point 29, then returning to Point 1 .

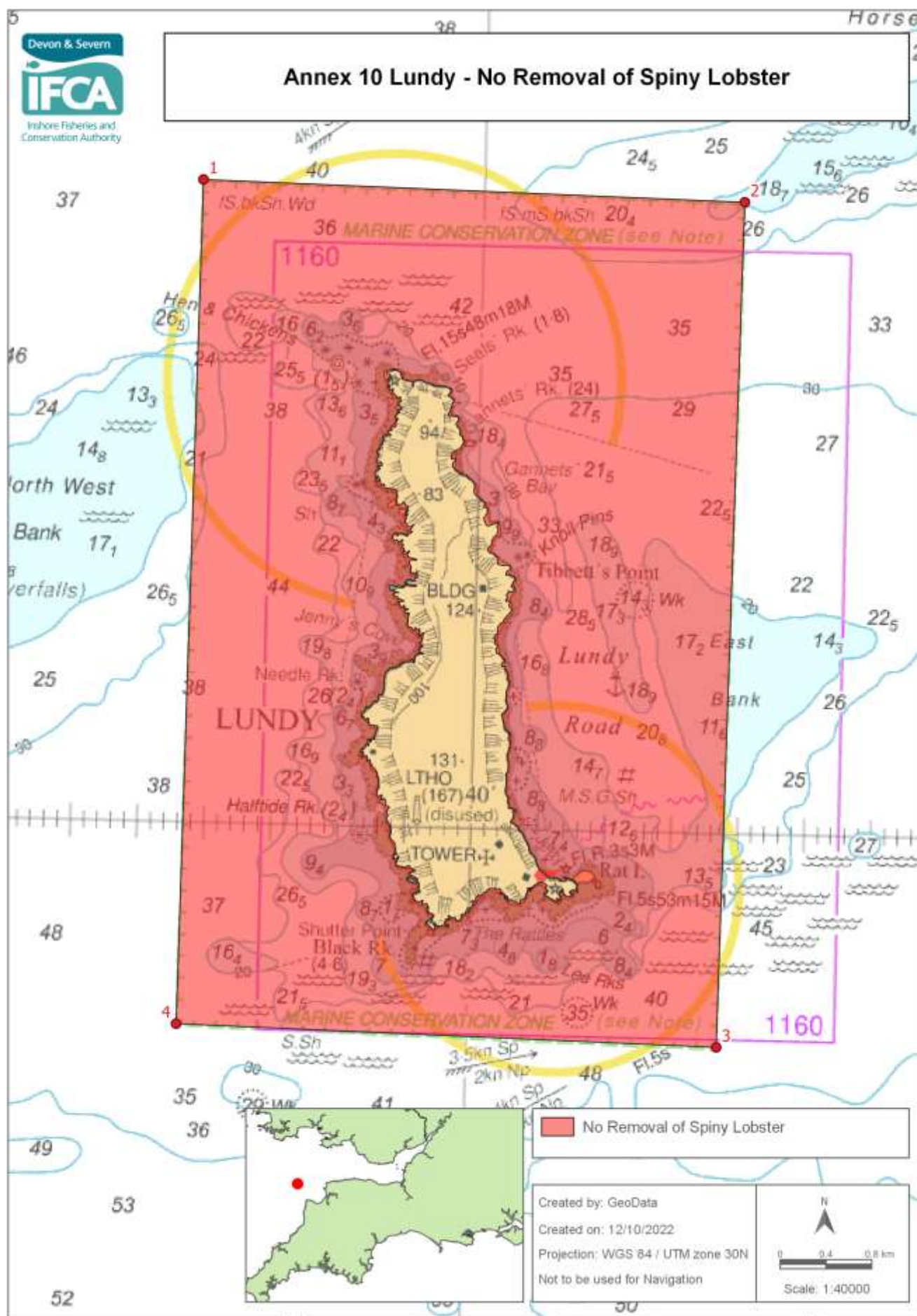
Point Number	Latitude	Longitude
1	004° 20.942 W	51° 13.281 N
2	004° 20.269 W	51° 13.612 N
3	004° 19.691 W	51° 13.876 N
4	004° 19.485 W	51° 14.271 N
5	004° 19.796 W	51° 14.541 N
6	004° 18.751 W	51° 15.164 N
7	004° 17.607 W	51° 15.148 N
8	004° 17.557 W	51° 15.331 N
9	004° 18.414 W	51° 15.361 N
10	004° 17.594 W	51° 15.851 N
11	004° 15.714 W	51° 15.064 N
12	004° 15.953 W	51° 15.007 N
13	004° 16.372 W	51° 15.185 N
14	004° 16.385 W	51° 15.180 N
15	004° 16.628 W	51° 15.142 N
16	004° 16.774 W	51° 15.028 N
17	004° 16.296 W	51° 14.902 N
18	004° 15.996 W	51° 14.731 N
19	004° 15.578 W	51° 14.606 N
20	004° 15.291 W	51° 14.650 N
21	004° 15.886 W	51° 14.187 N
22	004° 16.176 W	51° 14.280 N
23	004° 17.485 W	51° 14.290 N
24	004° 18.842 W	51° 13.768 N
25	004° 19.162 W	51° 13.308 N
26	004° 19.509 W	51° 13.028 N
27	004° 20.132 W	51° 13.018 N
28	004° 20.072 W	51° 12.702 N
29	004° 20.032 W	51° 12.647 N



Annex 10 Bideford to Foreland Point – No Removal of Spiny Lobster.

No Removal of Spiny Lobster in the area within the D&S IFCA District outlined by the following Points plotted sequentially from Point 1 to Point 18, then returning to Point 1. The landward boundary follows Mean High Water. The seaward boundary between Points 17 and 18 follows at a distance of 1nm from the Mean High Water line

Point Number	Latitude	Longitude
1	51° 14.764 N	003° 47.204 W
Landward boundary follows Mean High Water to Point 2		
2	51° 12.792 N	004° 06.130 W
3	51° 12.980 N	004° 06.126 W
4	51° 12.983 N	004° 06.778 W
5	51° 12.683 N	004° 06.778 W
Landward boundary follows Mean High Water to Point 6		
6	51° 04.524 N	004° 12.897 W
7	51° 03.849 N	004° 13.416 W
Landward boundary follows Mean High Water to Point 8		
8	51° 02.098 N	004° 15.685 W
9	51° 02.281 N	004° 16.001 W
10	51° 06.816 N	004° 14.667 W
11	51° 08.505 N	004° 17.135 W
12	51° 09.563 N	004° 15.967 W
13	51° 09.499 N	004° 14.015 W
14	51° 10.011 N	004° 13.570 W
15	51° 10.676 N	004° 13.655 W
16	51° 11.274 N	004° 14.426 W
17	51° 12.250 N	004° 14.385 W
Seaward boundary follows a one nautical mile line from Mean High Water to Point 18		
18	51° 15.825 N	003° 47.244 W



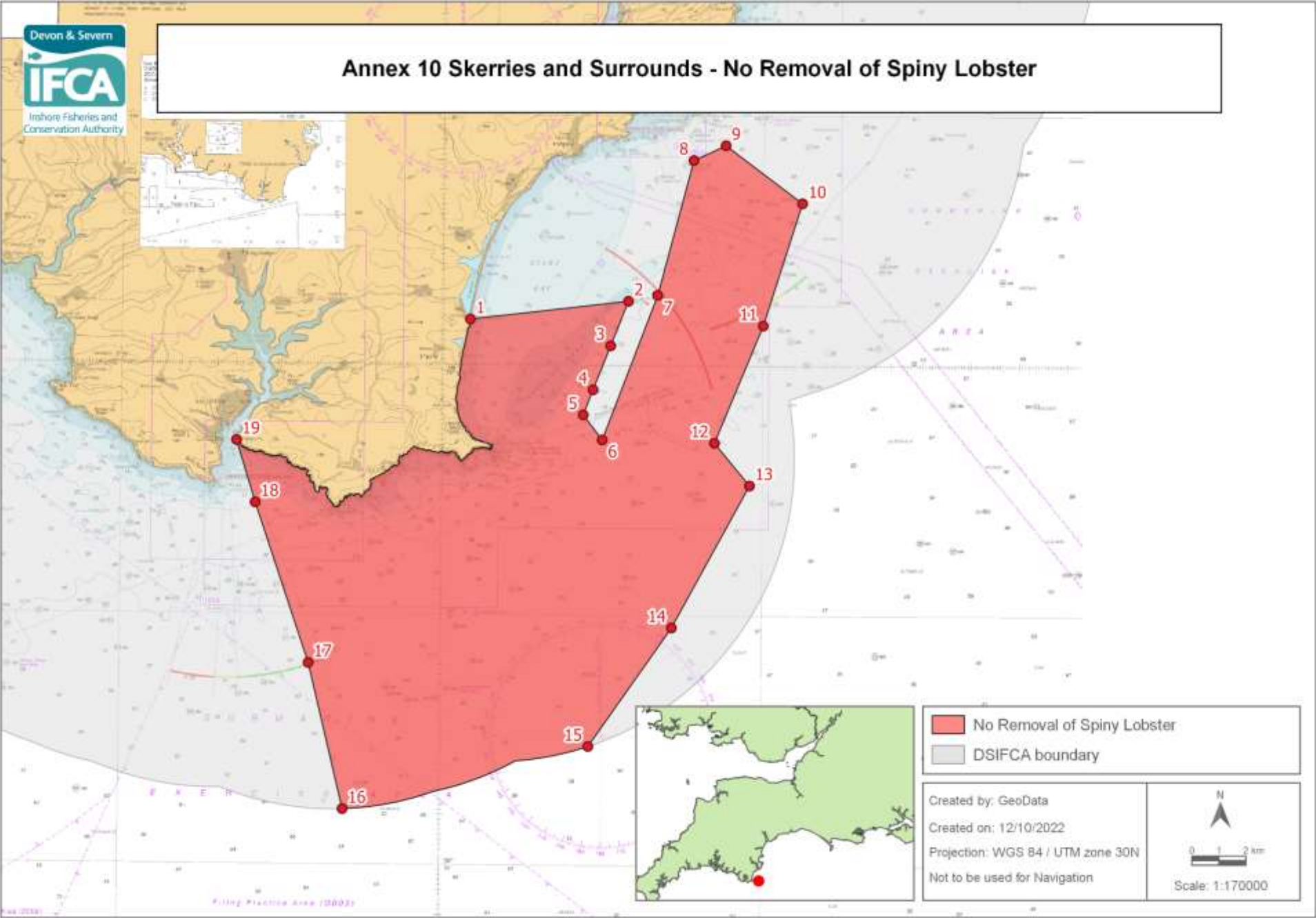
All positions are expressed in degrees, decimal minutes (DDMM), and shall be measured according to the WGS 84 Geographic Co-ordinate System

Version control: Mobile Fishing Category 1 (At sea) Annexes – For Formal Consultation - November 2022

Annex 10 Lundy – No Removal of Spiny Lobster.

No Removal of Spiny Lobster in the area within the D&S IFCA District outlined by the following Points plotted sequentially from Point 1 to Point 4, then returning to Point 1.

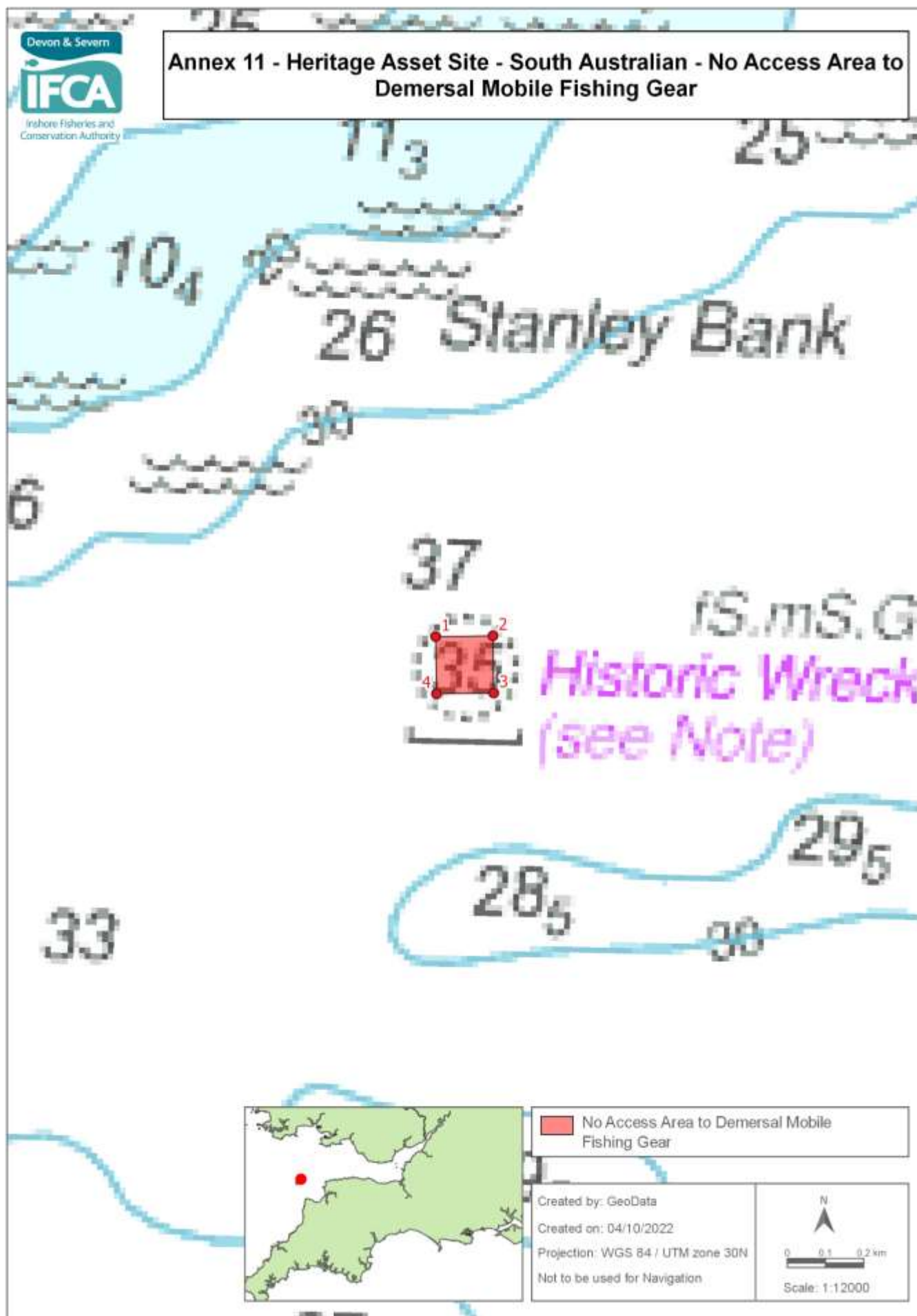
Point number	Latitude	Longitude
1	51° 13.022 N	004° 42.113 W
2	51° 12.972 N	004° 38.049 W
3	51° 08.986 N	004° 38.123 W
4	51° 09 040 N	004° 42.172 W



Annex 10 Skerries and Surrounds – No Removal of Spiny Lobster

No Removal of Spiny Lobster in the area within the D&S IFCA District outlined by the following Points plotted sequentially from Point 1 to Point 19, then returning to Point 1. The landward boundary follows Mean High Water.

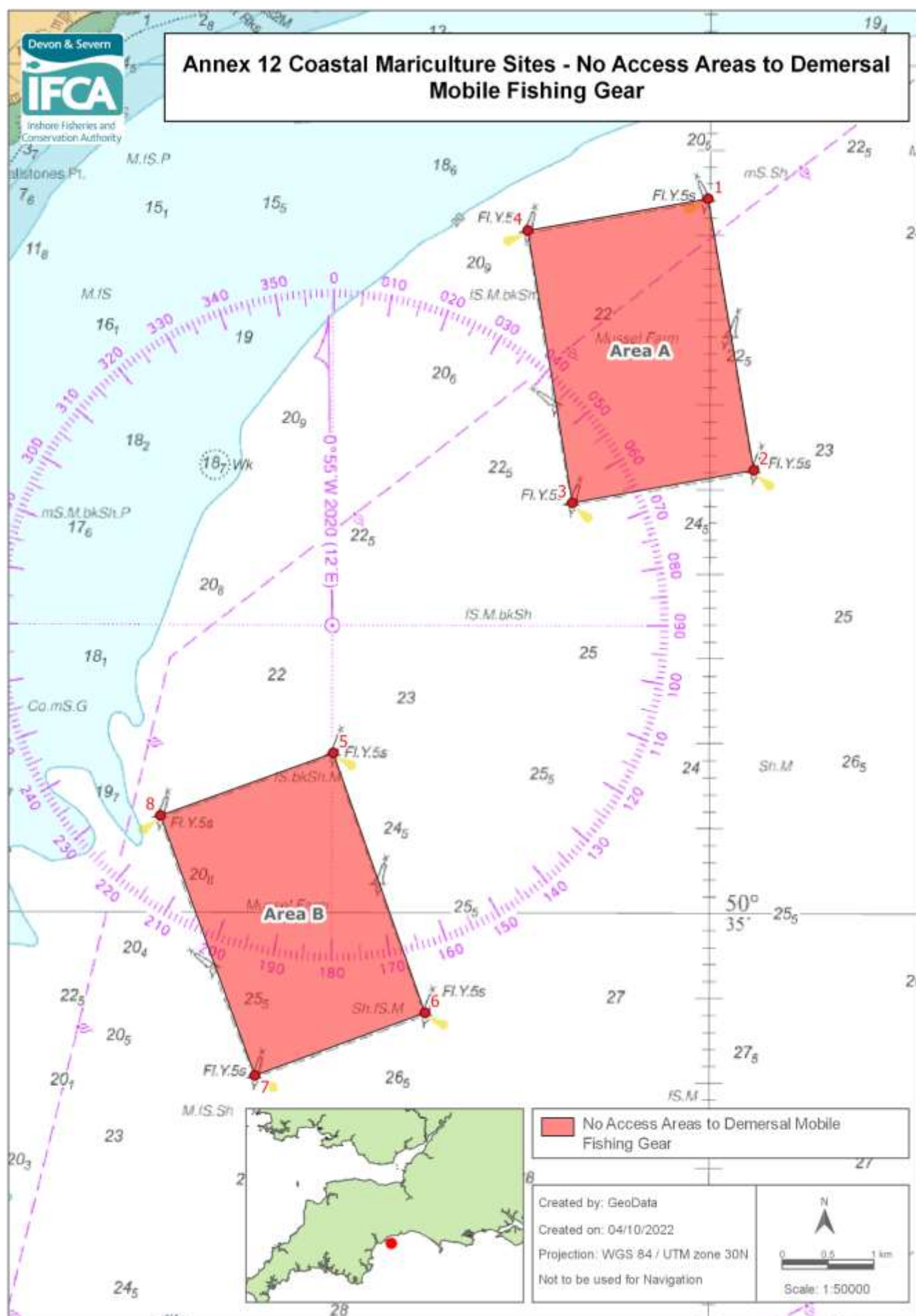
Point Number	Latitude	Longitude
1	50° 15.897 N	003° 39.141 W
2	50° 16.278 N	003° 34.212 W
3	50° 15.384 N	003° 34.758 W
4	50° 14.502 N	003° 35.298 W
5	50° 13.998 N	003° 35.598 W
6	50° 13.500 N	003° 35.000 W
7	50° 16.400 N	003° 33.300 W
8	50° 19.100 N	003° 32.200 W
9	50° 19.400 N	003° 31.200 W
10	50° 18.250 N	003° 28.800 W
11	50° 15.800 N	003° 30.000 W
12	50° 13.450 N	003° 31.500 W
13	50° 12.600 N	003° 30.400 W
14	50° 09.750 N	003° 32.800 W
15	50° 07.368 N	003° 35.373 W
Then follow the six nautical mile limit to Point 16		
16	50° 06.084 N	003° 43.000 W
17	50° 09.000 N	003° 44.100 W
18	50° 12.200 N	003° 45.800 W
19	50° 13.444 N	003° 46.402 W
Landward boundary follows mean high water to Point 1		



Annex 11 Heritage Asset Site – South Australian Heritage Asset Site – No Access to Demersal Mobile Fishing Gear

No access area to Demersal Mobile Fishing Gear within the D&S IFCA District outlined by the following points plotted sequentially from Point 1 to Point 4, then returning to point 1.

Point number	Latitude	Longitude
1	51° 12.845 N	004° 36.229 W
2	51° 12.848 N	004° 36.100 W
3	51° 12.767 N	004° 36.095 W
4	51° 12.764 N	004° 36.224 W



Annex 12 Coastal Mariculture Sites - No Access Areas to Demersal Mobile Fishing Gear

Area A

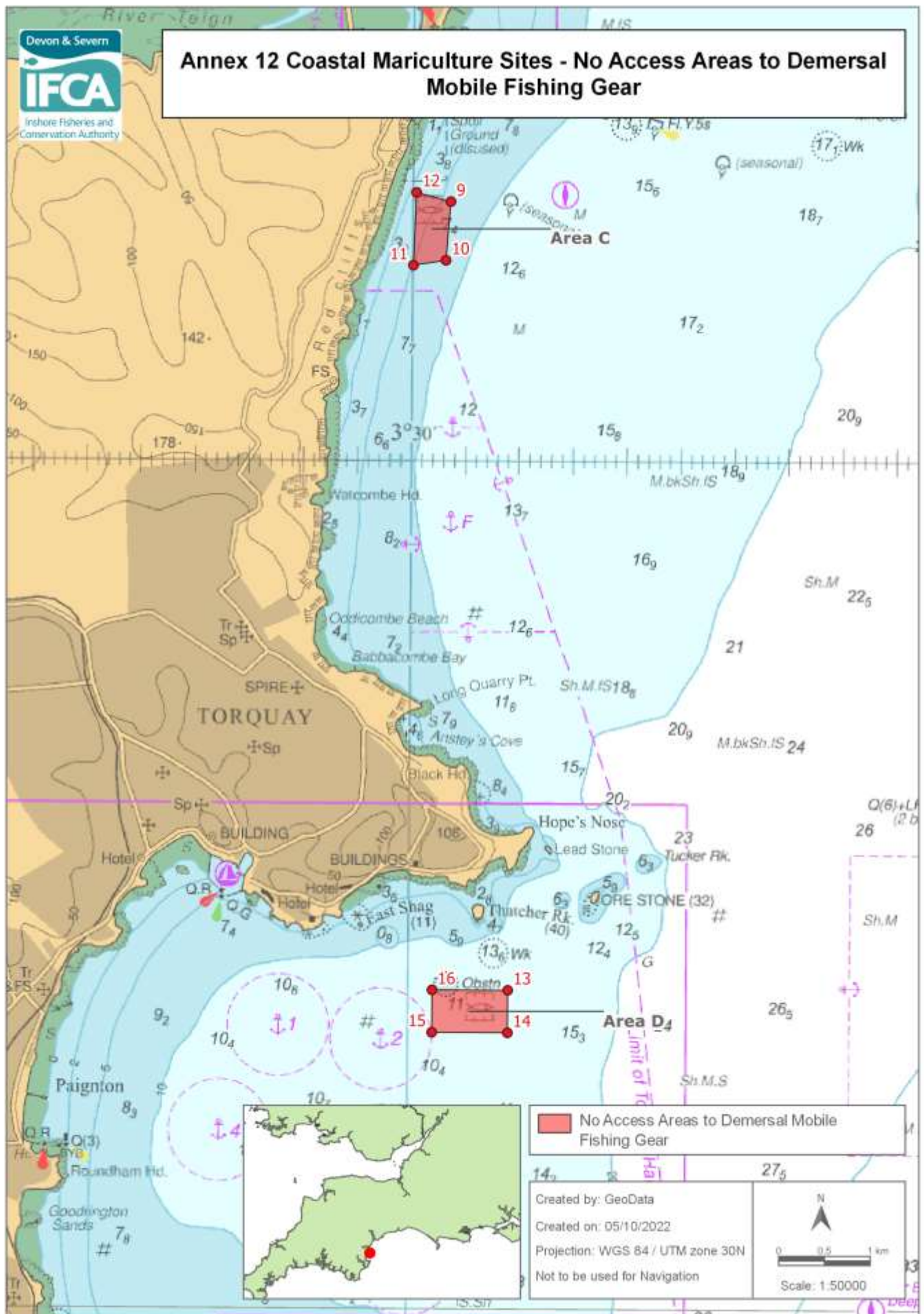
No Access area to Demersal Mobile Fishing Gear within the D&S IFCA District outlined by the following points plotted sequentially from Point 1 to Point 4, then returning to point 1.

Point number	Latitude	Longitude
1	50° 39.200 N	003° 10.028 W
2	50° 37.600 N	003° 09.600 W
3	50° 37.405 N	003° 11.281 W
4	50° 39.010 N	003° 11.700 W

Area B

No Access area to Demersal Mobile Fishing Gear within the D&S IFCA District outlined by the following points plotted sequentially from Point 5 to Point 8, then returning to Point 5.

Point number	Latitude	Longitude
5	50° 35.927 N	003° 13.488 W
6	50° 34.397 N	003° 12.632 W
7	50° 34.025 N	003° 14.205 W
8	50° 35.556 N	003° 15.086 W



Annex 12 Coastal Mariculture Sites - No Access Areas to Demersal Mobile Fishing Gear

Area C

No Access area to Demersal Mobile Fishing Gear within the D&S IFCA District outlined by the following points plotted sequentially from Point 9 to Point 12, then returning to Point 9.

Point number	Latitude	Longitude
9	50° 31.512 N	003° 29.653 W
10	50° 31.166 N	003° 29.695 W
11	50° 31.136 N	003° 29.996 W
12	50° 31.565 N	003° 29.971 W

Area D

No Access area to Demersal Mobile Fishing Gear within the D&S IFCA District outlined by the following points plotted sequentially from Point 13 to Point 16, then returning to point 13.

Point number	Latitude	Longitude
13	50° 26.865 N	003° 29.080 W
14	50° 26.615 N	003° 29.080 W
15	50° 26.615 N	003° 29.780 W
16	50° 26.865 N	003° 29.780 W

Annex 13 Areas where IVMS transmission is not required in accordance with Paragraph 5.1 of the Mobile Fishing Permit Byelaw Category One Permit Conditions.

Brixham – Landward of the boundary line between Points:

- A) 50° 24.335 N - 003° 30.779 W
- B) 50° 24.190 N - 003° 31.226 W

Torquay - Landward of the boundary line between Points:

- A) 50° 27.461 N - 003° 31.731 W
- B) 50° 27.435 N - 003° 31.735 W

Teignmouth- Landward of the boundary line between Points:

- A) 50° 32.546 N - 003° 29.810 W
- B) 50° 32.279 N - 003° 29.810 W

Exmouth - Landward of the boundary line between Points:

- A) 50° 35.518 N - 003° 26.629 W
- B) 50° 36.421 N - 003° 23.108 W

Axmouth - Landward of the boundary line between Points:

- A) 50° 42.135 N - 003° 03.354 W
- B) 50° 42.135 N - 003° 03.274 W

Dartmouth – Landward of the boundary line between Points:

- A) 50° 19.648 N - 003° 34.220 W
- B) 50° 20.121 N - 003° 32.648 W

Salcombe – Landward of the boundary line between Points:

- A) 50° 13.444 N - 003° 46.871 W
- B) 50° 13.444 N - 003° 46.402 W

Yealm – Landward of the boundary line between Points:

- A) 50° 18.736 N - 004° 04.148 W
- B) 50° 18.550 N - 004° 04.275 W

Plym – Landward of the boundary line between Points:

- A) 50° 21.562 N - 004° 08.120 W
- B) 50° 21.801 N - 004° 08.130 W

Tamar – Landward of the boundary line between Points:

- A) 50° 21.592 N - 004° 10.026 W
- B) 50° 21.541 N - 004° 10.208 W

Annex 13

Areas where IVMS transmission is not required in accordance with paragraph 5.1 of the Mobile Fishing Permit Byelaw Category One Permit Conditions.

Taw Torridge – Landward of the boundary line between Points:

A) 51° 04.524 N - 004° 12.897 W

B) 51° 03.849 N - 004° 13.416 W

Ilfracombe – Landward of the boundary line between Points:

A) 51° 12.650 N - 004° 06.668 W

B) 51° 12.586 N - 004° 06.520 W

Watchet – Landward of the boundary line between Points:

A) 51° 11.035 N - 003° 19.737 W

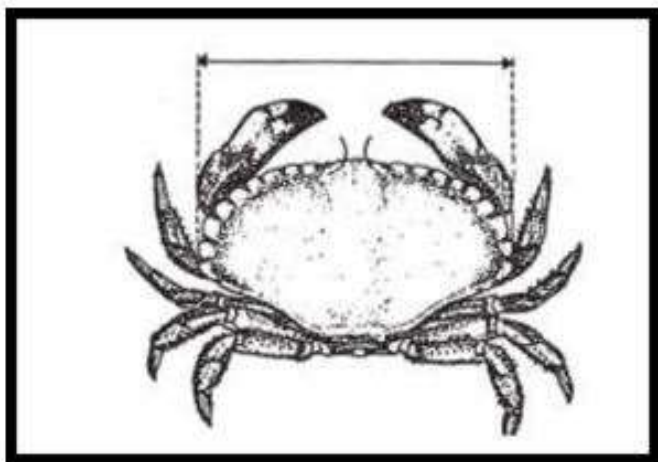
B) 51° 11.009 N - 003° 19.702 W

Annex 14: Measurement of a Marine Organism

The following explains how **Sea Fisheries Resources** are measured and the size they must be in order to be removed from a fishery within the **District**. The Annex should be read in conjunction with the catch restrictions set out in the Category One Mobile Fishing **Permit Conditions**.

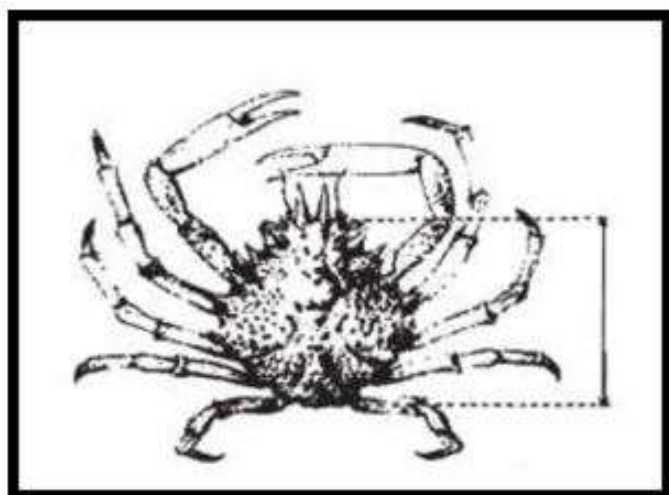
Edible Crab and Velvet Swimming Crab

1. A female **Edible Crab** is measured across the broadest part of the carapace and must be 150mm or more.
2. A male **Edible Crab** is measured across the broadest part of the carapace and must be 160mm or more.
3. A **Velvet Swimming Crab** is measured across the broadest part of the carapace and must be 65mm or more.



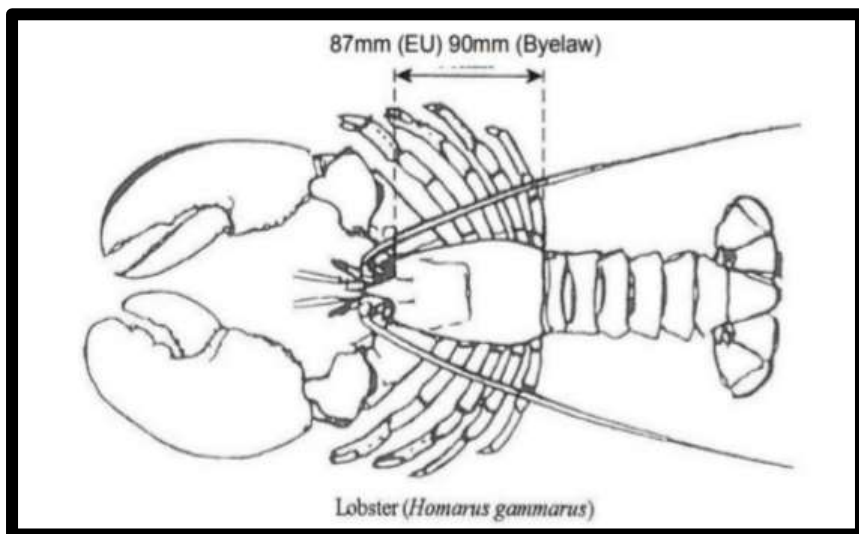
Spider Crab

4. Male and female **Spider Crabs** are measured as the length of the carapace, along the midline, from the edge of the carapace between the rostrums to the posterior edge of the carapace and must be 130mm or more.



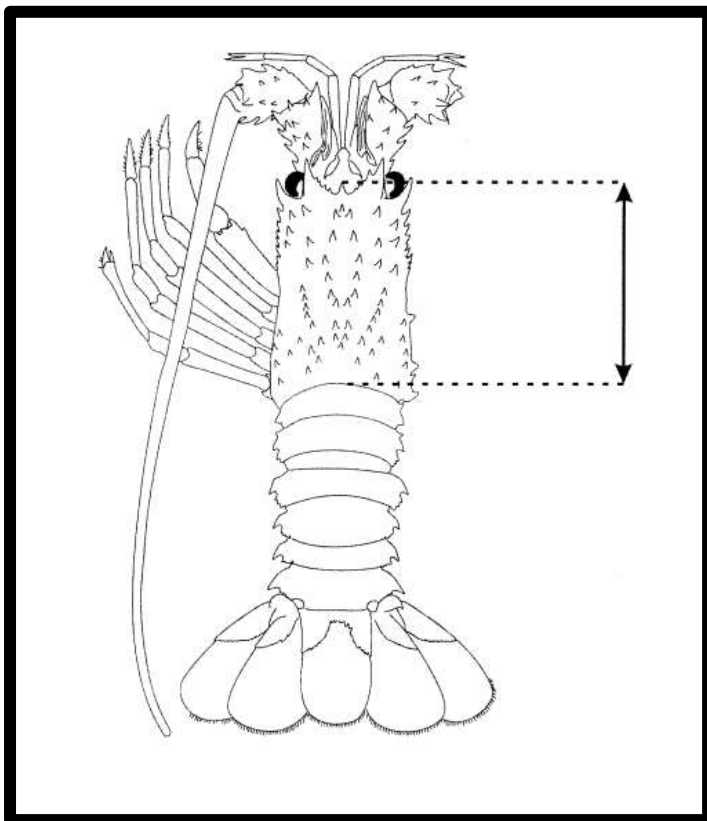
Lobster

5. A **Lobster** is measured as the length of the carapace, parallel to the midline, from the back of either eye socket to the distal edge of the carapace and must be 90mm or more.



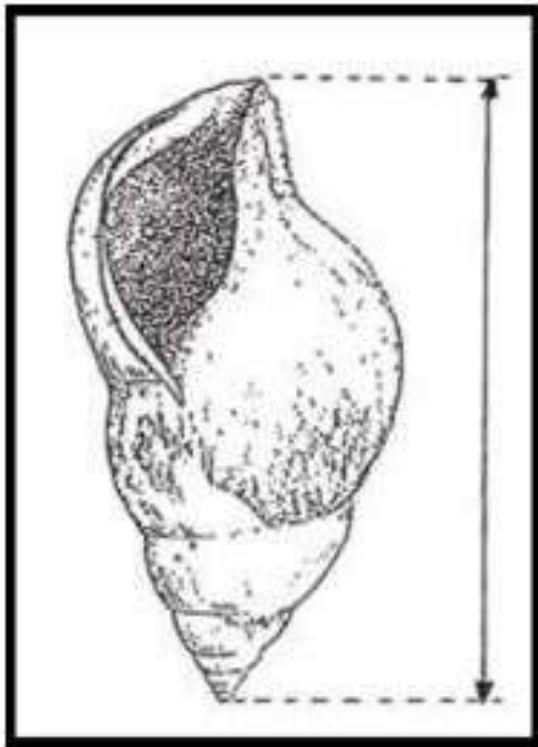
Spiny Lobster

6. A **Spiny Lobster** is measured as the length of the carapace from the tip of the rostrum to the midpoint of the distal edge of the carapace and must be 110mm or more.



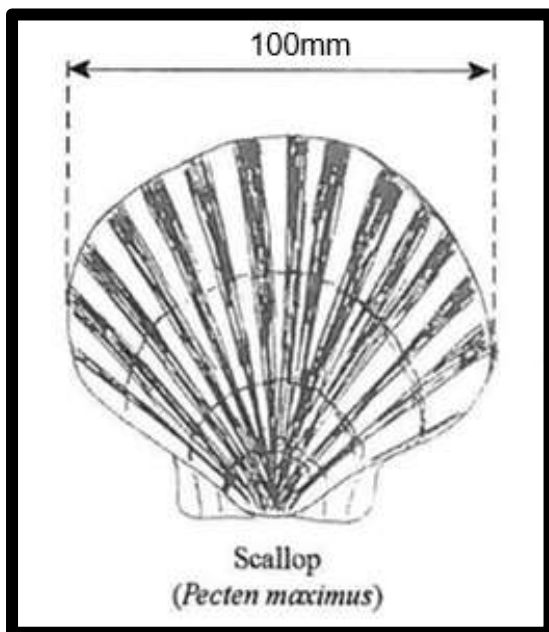
Whelk

7. A **Whelk** is measured along the length of the shell and must be 65mm or more.



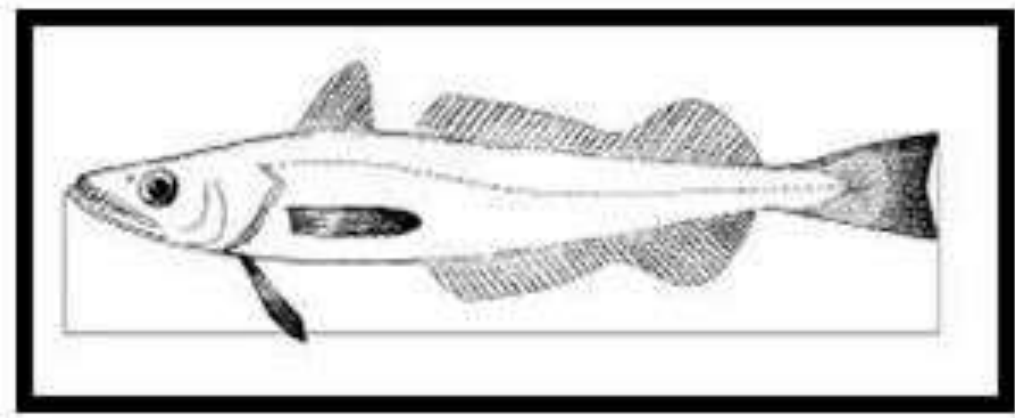
Scallop

8. A **Scallop** is measured across the broadest part of the flat shell and must be 100mm or more.



Finfish

9. Finfish are measured from the tip of the snout to the end of the tail fin.



- **Bass** must be 42cm or more in length.

End.