

All Positions are expressed in degrees, decimal minutes (DDM) and shall be measured according to the WGS84 Geographic Co-ordinate System
Version Control: Mobile Fishing Category 1 (At Estuary) Annexes – For Formal Consultation - November 2022

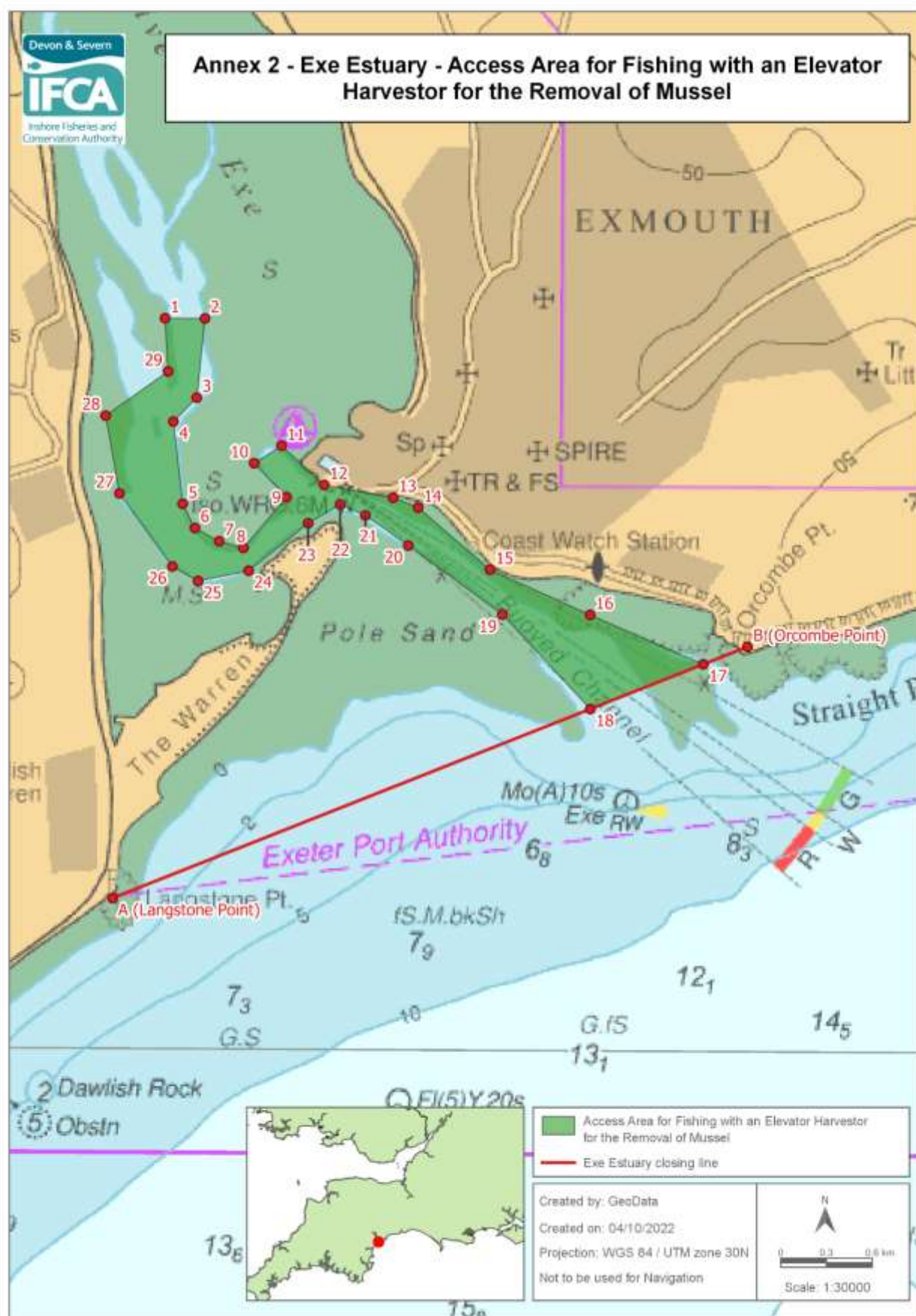
Annex 1-Salcombe Estuary – Access Area for Dredging for Scallops

Access Area for dredging for scallops within the Salcombe Estuary in the D&S IFCA District outlined by the following points plotted sequentially from Point 1 to Point 12, then returning to Point 1. The landward boundaries follow Mean High Water.

Point Number	Latitude	Longitude
1	50° 14.037 N	003° 45.886 W
2	50° 14.039 N	003° 45.934 W
3	50° 13.860 N	003° 46.148 W
4	50° 13.871 N	003° 46.292 W
5	50° 13.960 N	003° 46.196 W
6	50° 13.980 N	003° 46.147 W
7	50° 14.019 N	003° 46.109 W
8	50° 14.030 N	003° 46.109 W
9	50° 14.174 N	003° 45.932 W
10	50° 14.188 N	003° 45.973 W
Landward boundary follows Mean High Water to Point 11		
11	50° 14.445 N	003° 45.532 W
12	50° 14.416 N	003° 45.350 W
Landward boundary follows Mean High Water returning to Point 1		

All Positions are expressed in degrees, decimal minutes (DDM) and shall be measured according to the WGS84 Geographic Co-ordinate System

Version Control: Mobile Fishing Category 1 (At Estuary) Annexes – For Formal Consultation - November 2022



All Positions are expressed in degrees, decimal minutes (DDM) and shall be measured according to the WGS84 Geographic Co-ordinate System

Version Control: Mobile Fishing Category 1 (At Estuary) Annexes – For Formal Consultation - November 2022

Annex 2 Exe Estuary – Access Area for Fishing with an Elevator Harvester for the Removal of Mussel

Access Area for fishing with an elevator harvester for the removal of mussel in the Exe Estuary in the D&S IFCA District outlined by the following points plotted sequentially from Point 1 to Point 29 and returning to Point 1.

Point Number	Latitude	Longitude
1	50° 37.574 N	003° 26.357 W
2	50° 37.574 N	003° 26.135 W
3	50° 37.293 N	003° 26.177 W
4	50° 37.208 N	003° 26.307 W
5	50° 36.917 N	003° 26.253 W
6	50° 36.831 N	003° 26.184 W
7	50° 36.785 N	003° 26.048 W
8	50° 36.762 N	003° 25.914 W
9	50° 36.942 N	003° 25.675 W
10	50° 37.062 N	003° 25.857 W
11	50° 37.124 N	003° 25.704 W
12	50° 36.986 N	003° 25.466 W
13	50° 36.942 N	003° 25.082 W
14	50° 36.908 N	003° 24.943 W
15	50° 36.690 N	003° 24.542 W
16	50° 36.531 N	003° 23.984 W
17	50° 36.358 N	003° 23.353 W
18	50° 36.197 N	003° 23.979 W
19	50° 36.531 N	003° 24.471 W
20	50° 36.774 N	003° 24.996 W
21	50° 36.879 N	003° 25.236 W
22	50° 36.917 N	003° 25.377 W
23	50° 36.850 N	003° 25.554 W
24	50° 36.681 N	003° 25.884 W
25	50° 36.644 N	003° 26.164 W
26	50° 36.695 N	003° 26.308 W
27	50° 36.952 N	003° 26.605 W
28	50° 37.228 N	003° 26.683 W
29	50° 37.386 N	003° 26.338 W

All Positions are expressed in degrees, decimal minutes (DDM) and shall be measured according to the WGS84 Geographic Co-ordinate System

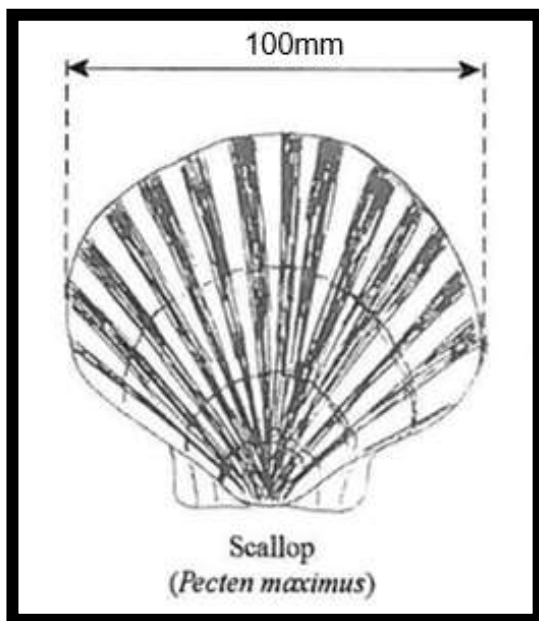
Version Control: Mobile Fishing Category 1 (At Estuary) Annexes – For Formal Consultation - November 2022

Annex 3: Measurement of a Marine Organism

The following explains how **Sea Fisheries Resources** are measured and the size they must be in order to be removed from a fishery within the **District**. Annex 3 should be read in conjunction with the catch restrictions set out in the Category Two Mobile Fishing **Permit Conditions**.

Scallop

1. A **Scallop** is measured across the broadest part of the flat shell and must be 100mm or more.



End.