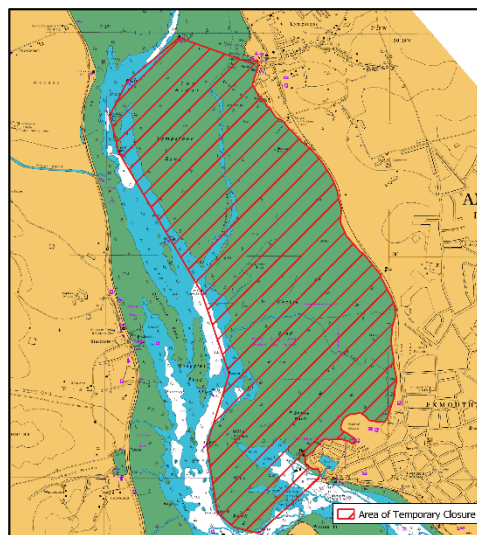
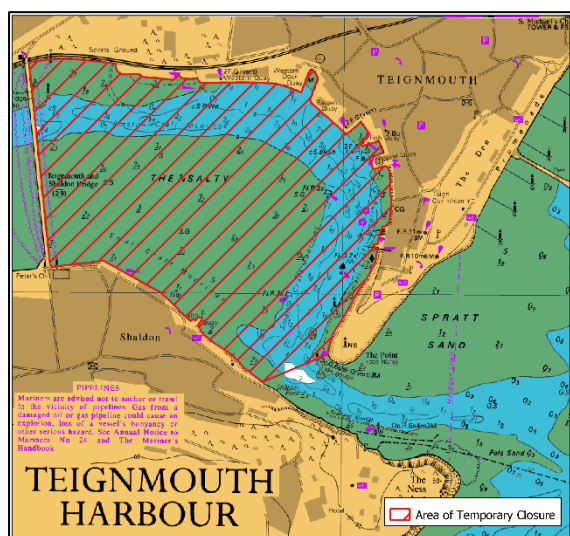


Devon and Severn IFCA News

D&S IFCA Set to Close Public Shellfish Beds

Public Shellfish Beds in the Teign And Exe Estuary will be closed on 1st May 2019



The D&S IFCA Byelaw & Permitting Sub-Committee has taken the decision to apply a temporary closure to public shellfish beds in both the Teign and Exe Estuary. Defined areas in both estuaries will be closed from 1st May 2019.

Why?

The stocks of Mussel in both the Teign and Exe Estuary are severely depleted. The [Byelaw and Permitting Sub-Committee](#) are tasked with reviewing the management of fishing activities within the District and considered the evidence that was presented to them in a [report](#) at their meeting in November 2018.

After [considering the evidence](#) presented to them it was concluded that a temporary closure of specific areas for a period of 18 to 24 months may produce a positive effect and allow the sites to recover. Efforts are being taken to re-stock areas within the Exe Estuary and a temporary closure will help to protect transplanted mussel. D&S IFCA will correspond with the Harbour Authorities and other relevant organisations. Monitoring of the sites will be conducted.

D&S IFCA has the legal duty to manage the exploitation of sea fisheries resources in the District. This is set out in the Marine and Coastal Access Act 2009 and D&S IFCA will use the Temporary Closure of Shellfish Beds Byelaw to close the areas. The closure applies to both commercial and recreational fishers and is for mussel, not other shellfish such as oysters, clams and periwinkles.

Where exactly are the closures?

Teign: The Salty and Polly Steps public beds.

[\(View the poster here\)](#)

Exe: The public beds on the eastern banks of the Exe Estuary.

[\(View the poster here\)](#)

Need more Information?

- Contact D&S IFCA and talk to an officer.
- You can subscribe to our free E-newsletter by contacting D&S IFCA.