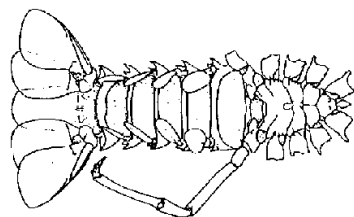
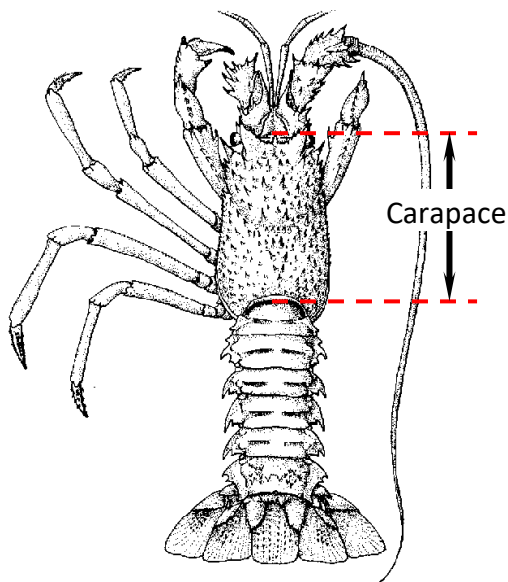
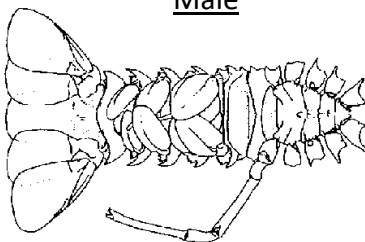


## Crawfish

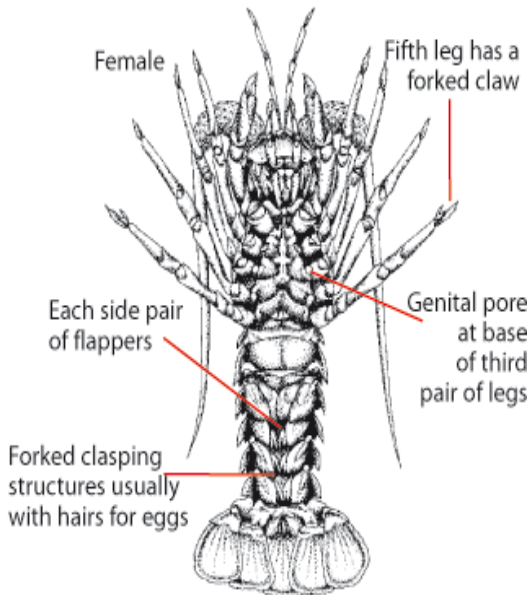
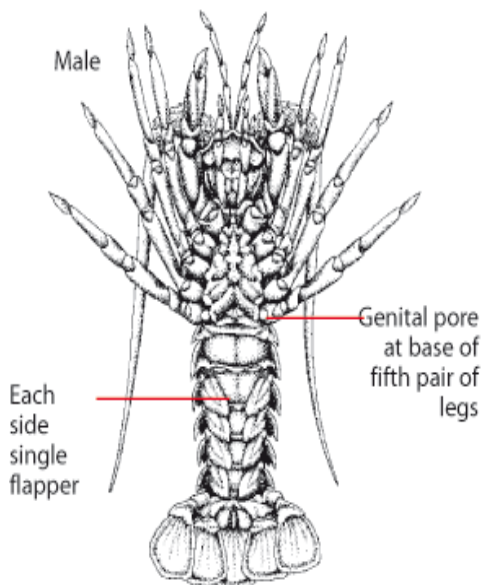
The measurement should be taken from the tip of the rostral spine to the midpoint along the rear edge of the body shell (see diagram). For ease and accuracy, there is an attachment for the callipers that cradles the tip of the rostral spine to the edge of the fixed jaw.



Male



Female





Devon and Severn IFCA  
Brixham Laboratory  
Freshwater Quarry  
Brixham  
TQ5 8BA

Out of hours Tel: 07740 175479  
Office Tel: 01803 854648  
Sarah Clark Tel: 07515 050887  
Website: [www.devonandsevernifca.gov.uk](http://www.devonandsevernifca.gov.uk)