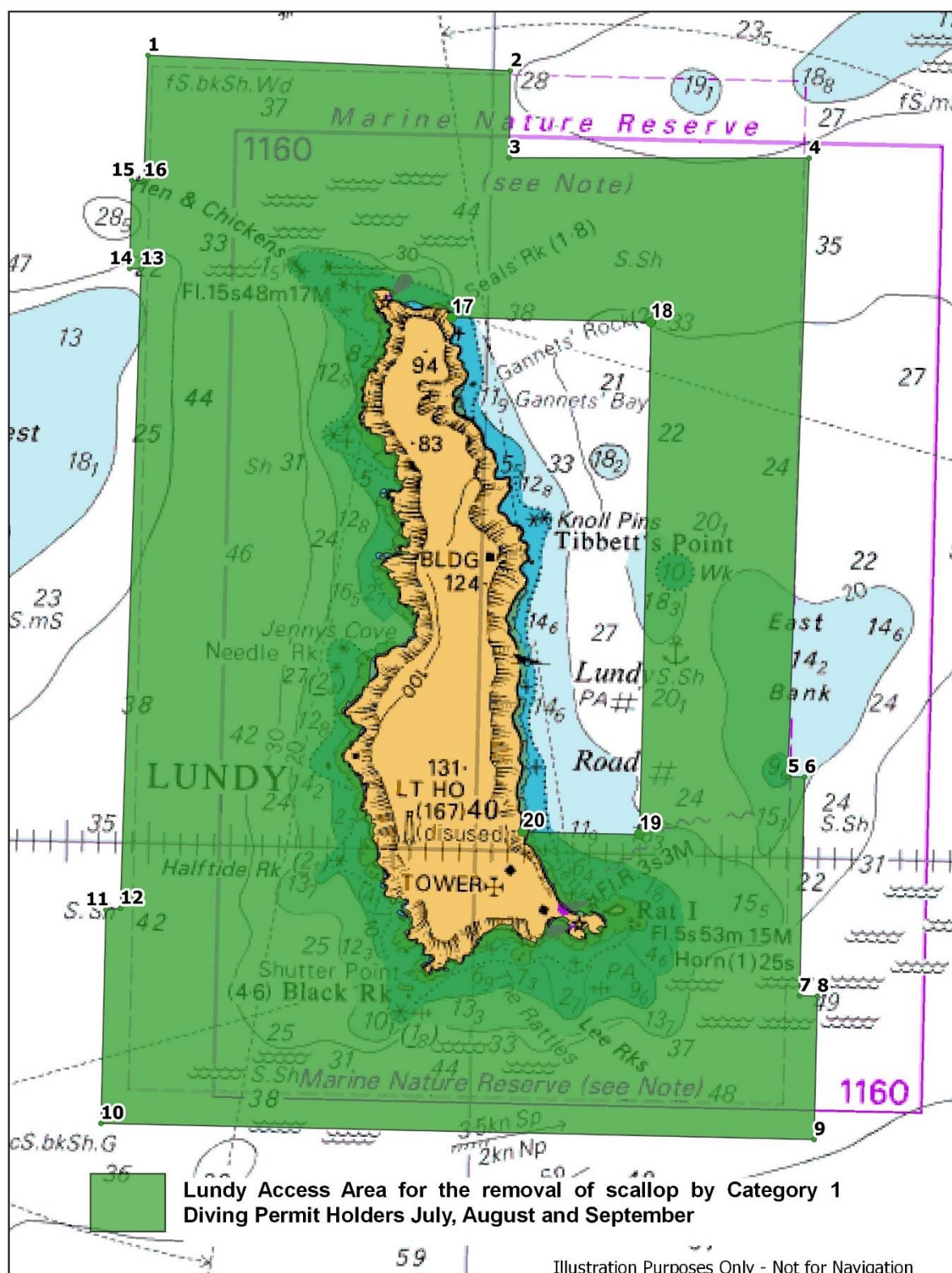


Annex 4a : Lundy SAC and MC Z - Access to Category One Diving Permit Holders for the Removal of Scallop - July, August and September



on chart 50°30'00"N, 003°00'00"W
adjustments 0°03'S 0°08'E
position 50°29'97"N, 002°59'92"W

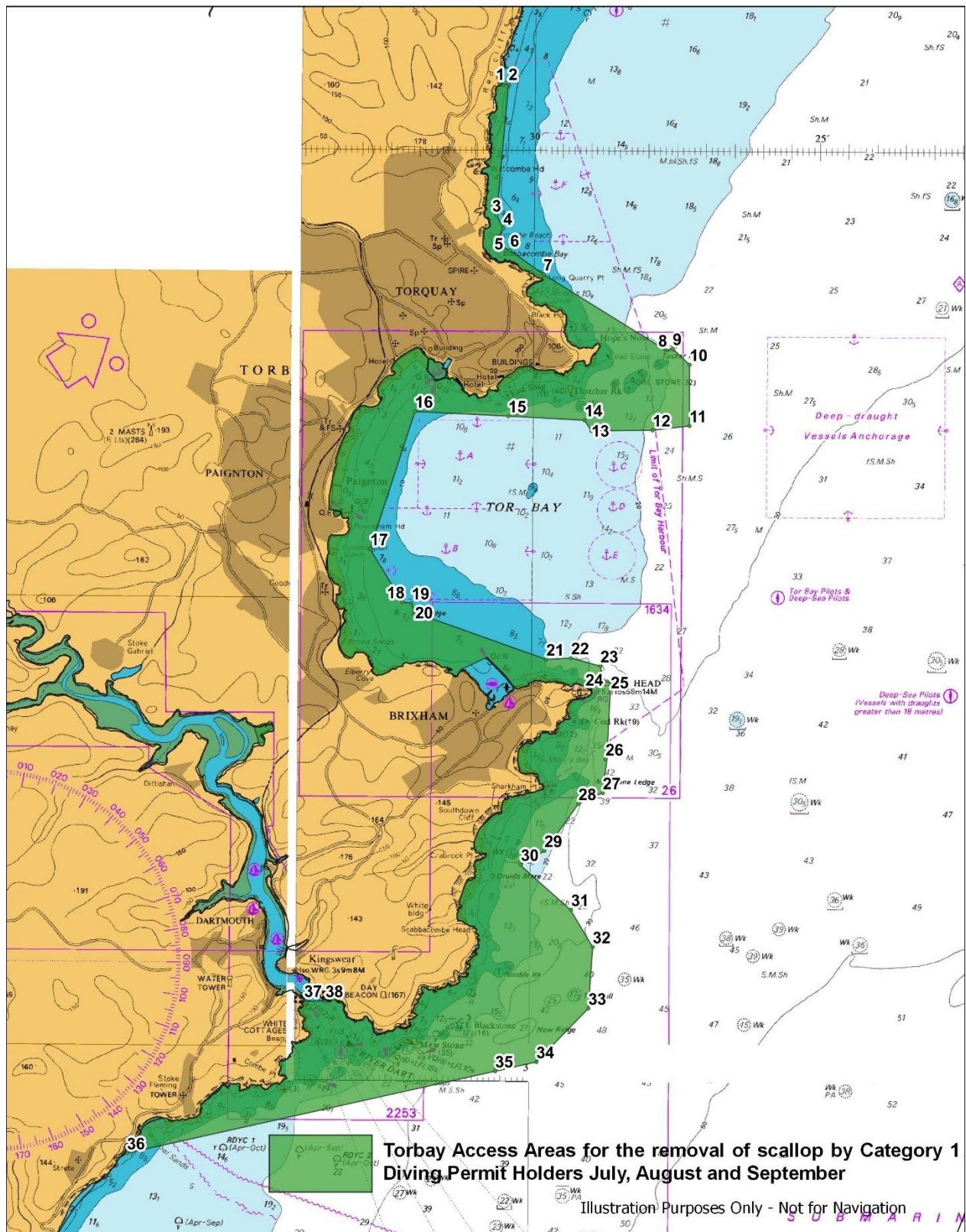
VESSEL TRAFFIC SERVICE
For procedures and working details of the Weymouth and Portland Reporting System, see Admiralty List of Radio Signals.

passing through these waters.
from unauthorised interference.

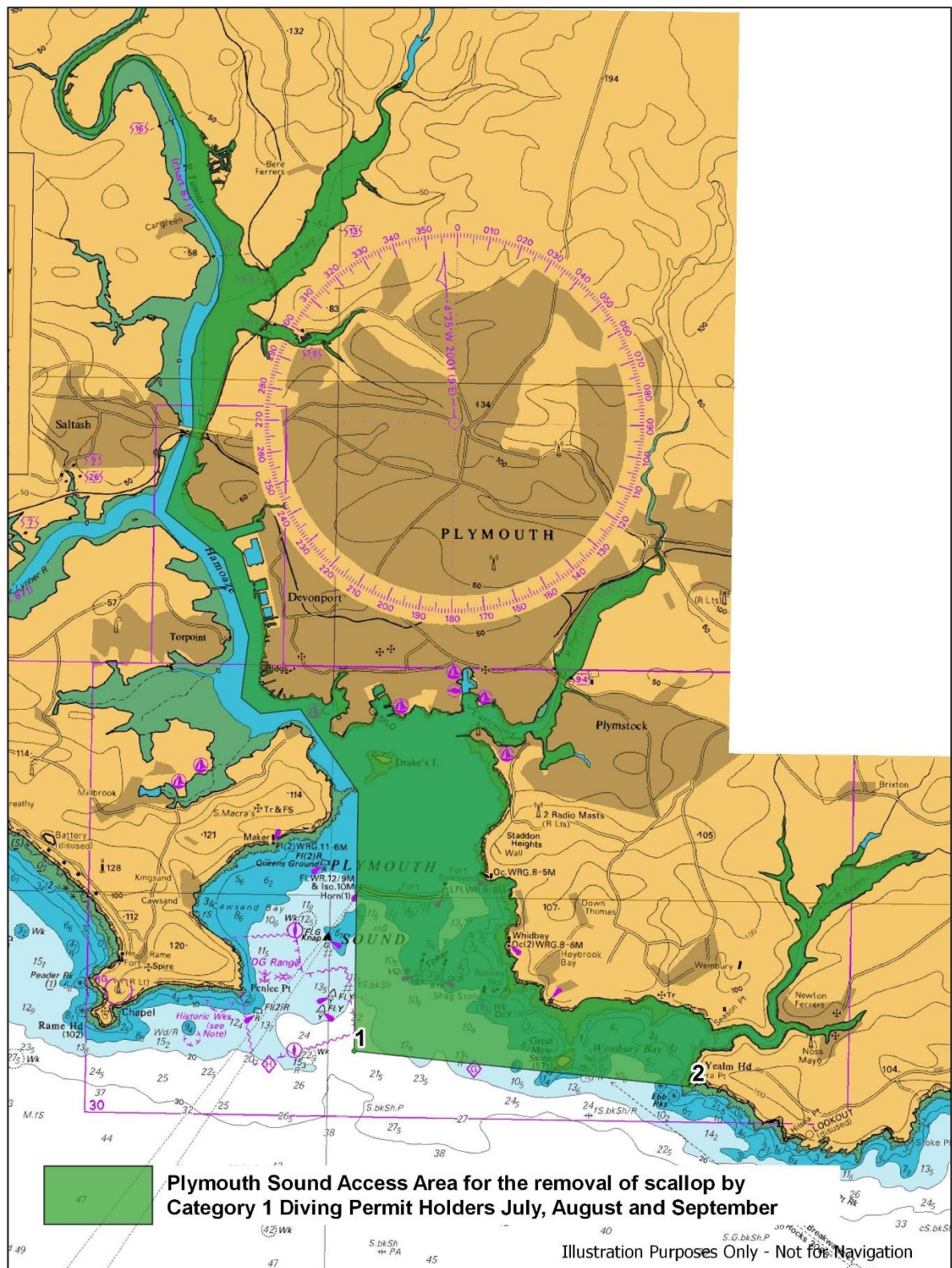
Lyme Bay Access Areas for the removal of scallop by Category 1 Diving Permitt Holders July, August and September

Illustration Only - Not for Navigation

Annex 4c: Torbay Section of the Lyme Bay and Torbay SAC - Access to Category One Diving Permit Holders for the Removal of Scallop - July, August and September



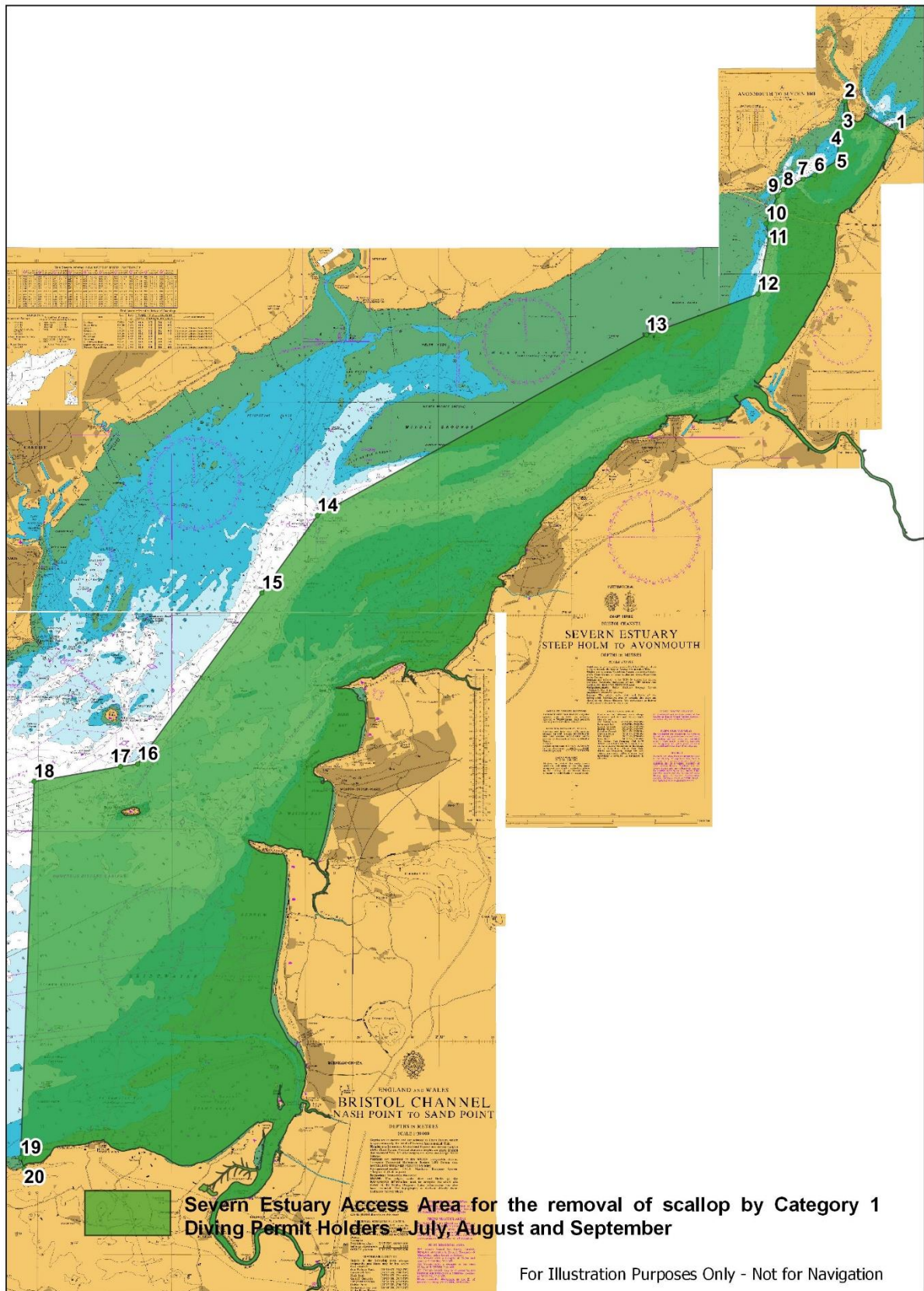
Annex 4d: Plymouth Sound and Estuaries SAC - Access to Category One Diving Permit Holders for the Removal of Scallop - July, August and September



Access Areas for the removal of scallop by Category 1 Diving Permit Holders - July, August and September. Area A = South of Salcombe; Area B=Bigbury Bay; Area C=South of Dartmouth

Illustration Purposes Only - Not for Navigation

Annex 4f: Severn Estuary SAC - Access Areas to Category One Diving Permit Holders for the Removal of Scallop - July, August and September



Introduction of Remotely Accessed Electronic Monitoring Device (IVMS/VMS)

The formal consultation highlighted the use of Annex 5 in connection with transmitted data and potential failure of the device. Areas defined in Annex 5 are areas where the device does not have to transmit the required information and where it would be suitable for a device to be repaired.

Annex 5: Areas where IVMS transmission is not required in accordance with paragraph 2.1.1 (b) of the Diving Permit Permit Byelaw Category One Permit Conditions.

Brixham – Landward of the boundary line between Points:

A) 50°24.210 N - 003° 31.200 W

B) 50°24.340 N - 003° 30.780 W

Torquay - Landward of the boundary line between Points:

A) 50° 27.450 N - 003° 31.750 W

B) 50° 27.420 N - 003° 31.720 W

Teignmouth- Landward of the boundary line between Points:

A) 50° 32.270 N - 003° 29.730 W Ness

B) 50° 32.500 N - 003° 29.770 W Southern leading light

Exmouth - Landward of the boundary line between Points:

A) 50° 35.518 N - 003° 26.629 W Langstone Point

B) 50° 36.421 N - 003° 23.108 W Orcombe Point

Axmouth - Landward of the boundary line between Points:

A) 50° 42.135 N - 003° 03.354 W

B) 50° 42.135 N - 003° 03.274 W

Dartmouth – Landward of the boundary line between Points:

A) 50° 19.634 N - 003° 34.266 W Coombe Point

B) 50° 20.141 N - 003° 32.583 W Inner Froward Point

Salcombe – Landward of the boundary line between Points:

A) 50° 13.444 N - 003° 46.915 W Splatcove Point

B) 50° 13.444 N - 003° 46.402 W Limebury Point

Yealm – Landward of the boundary line between Points:

A) 50° 18.749 N - 004° 04.139 W Season Point

B) 50° 18.560 N - 004° 04.268 W Mouth Stone

Sutton Harbour – Landward of the boundary line between Points:

A) 50° 21.580 N - 004° 09.820 W

B) 50° 21.850 N - 004° 07.490 W

Tamar – Landward of the boundary line between Points:

A) 50° 21.760 N - 004° 10.120 W

B) 50° 21.580 N - 004° 10.040 W

Taw Torridge – Landward of the boundary line between Points:

A) 51° 02.620 N - 004° 14.270 W

B) 51° 07.040 N - 004° 13.470 W

Ilfracombe – Landward of the boundary line between Points:

A) 51° 12.640 N - 004° 06.680 W

B) 51° 12.580 N - 004° 06.500 W

Watchet – Landward of the boundary line between Points:

A) 51° 11.040 N - 003° 19.750 W

B) 51° 11.000 N - 003° 19.680 W

End of the supporting information for the formal consultation.