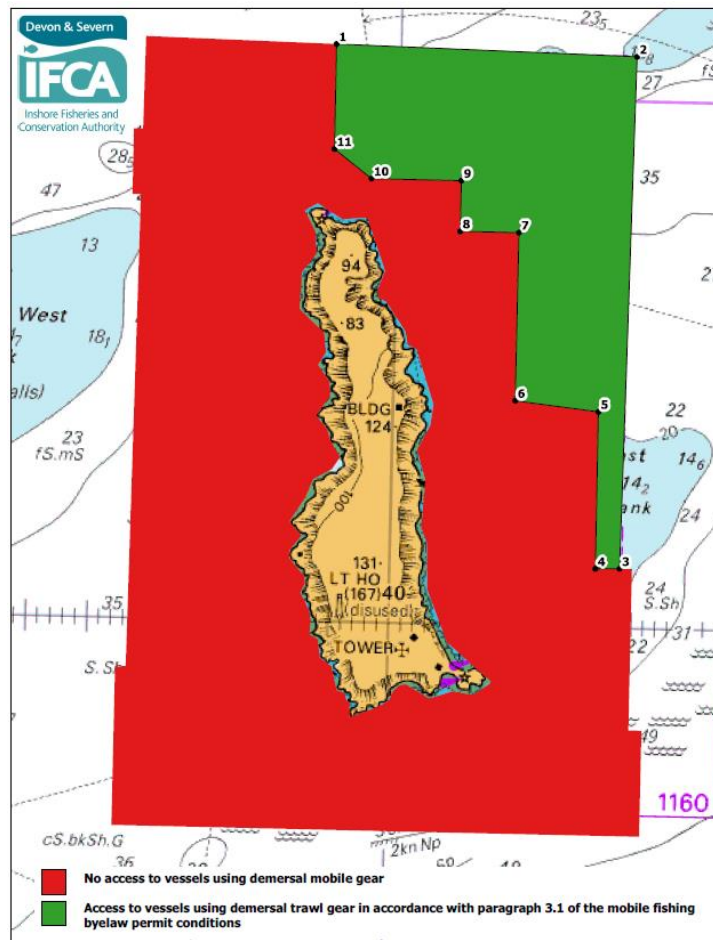


Lundy Special Area of Conservation, Monitoring and Control Plan Baseline Document 2019: Towed (demersal) Trawl Gear on Subtidal Coarse Sediment



Lauren Parkhouse
Environment Officer
March 2021

Version control history			
Author	Date	Comment	Version
Lauren Parkhouse	06/2020	Initial Draft	0.1
	25/08/2020	Amendments to initial draft following review by James Stewart	0.2
	15/03/2021	Review of v0.2 by Sarah Clark	0.3
	18/03/2021	JS: Finalised following addition of links to Natural England advice	1.0

Background of Monitoring and Control Plan

In 2012, the Department for Environment, Food and Rural Affairs (Defra) announced a revised approach to the management of commercial fisheries in European Marine Sites (EMS). The objective of this revised approach is to ensure that all existing and potential commercial fishing activities are managed in accordance with Article 6 of the Habitats Directive.

Activity/feature interactions in EMS underwent Habitat Regulation Assessments (HRA) to determine whether management measures were required in order to ensure that fishing activities will have no adverse effect on the integrity of the site.

Lundy Special Area of Conservation (SAC) has a number of qualifying features, including the subtidal coarse sediment sub-feature (Annex 1). This feature, and its interaction with commercial fishing activities, is the subject of this document.

In carrying out a Habitat Regulation Assessment (HRA) for towed (demersal) trawl gear on subtidal coarse sediment in 2016, and subsequently updating this in 2018 due to [advice](#) given by Natural England, D&S IFCA concluded that for the current number of vessels, which fish seasonally, there would be no significant effect on this feature.

NE [advised](#) that due to uncertainties of possible impacts of otter trawls on the coarse sediment, and the level of effort, a M&C Plan should be developed. D&S IFCA followed this advice, and a M&C Plan was created in 2019.

This report should be read in conjunction with the M&C Plan ([Version 2.1, 2019](#)).

M&C Plan Actions

1. Monitoring of Fishing Activity

The first action of the M&C Plan was to monitor the level of fishing effort on a yearly basis, with 2019 being set as a baseline.

During the 2019, there were four vessels with Mobile Gear Permits which could potentially fish the area, or who were known to fish the area in the past. This number will be set as the baseline.

Vessel Monitoring System (VMS) data were obtained from the MMO for activity within the area open to demersal trawl gear within the Lundy SAC. Data were requested for the four permitted mobile gear vessels, for activity taking place during the squid fishery season between May 1st 2019 to 31st August 2019.

Two of the four vessels fished within the area during the period for which data were requested. A total of 11 passes of the gear were made in a two-month period, five of which were carried out on one day. One of the vessels only entered the area once for a total of 10 minutes (vessel 22). The other vessel (vessel 21) had a total of six days of activity of differing lengths of time, ranging from approximately 12 minutes, to entering the area five times in a day on the 5th July 2019. The first day of activity in the area was 12th May 2019 and the final day was 15th July 2019. Fishing activity maps created from the VMS data are shown in Annex 2 of this document.

As stated in the Monitoring and Control Plan, this effort level will now be used as a baseline for subsequent monitoring.

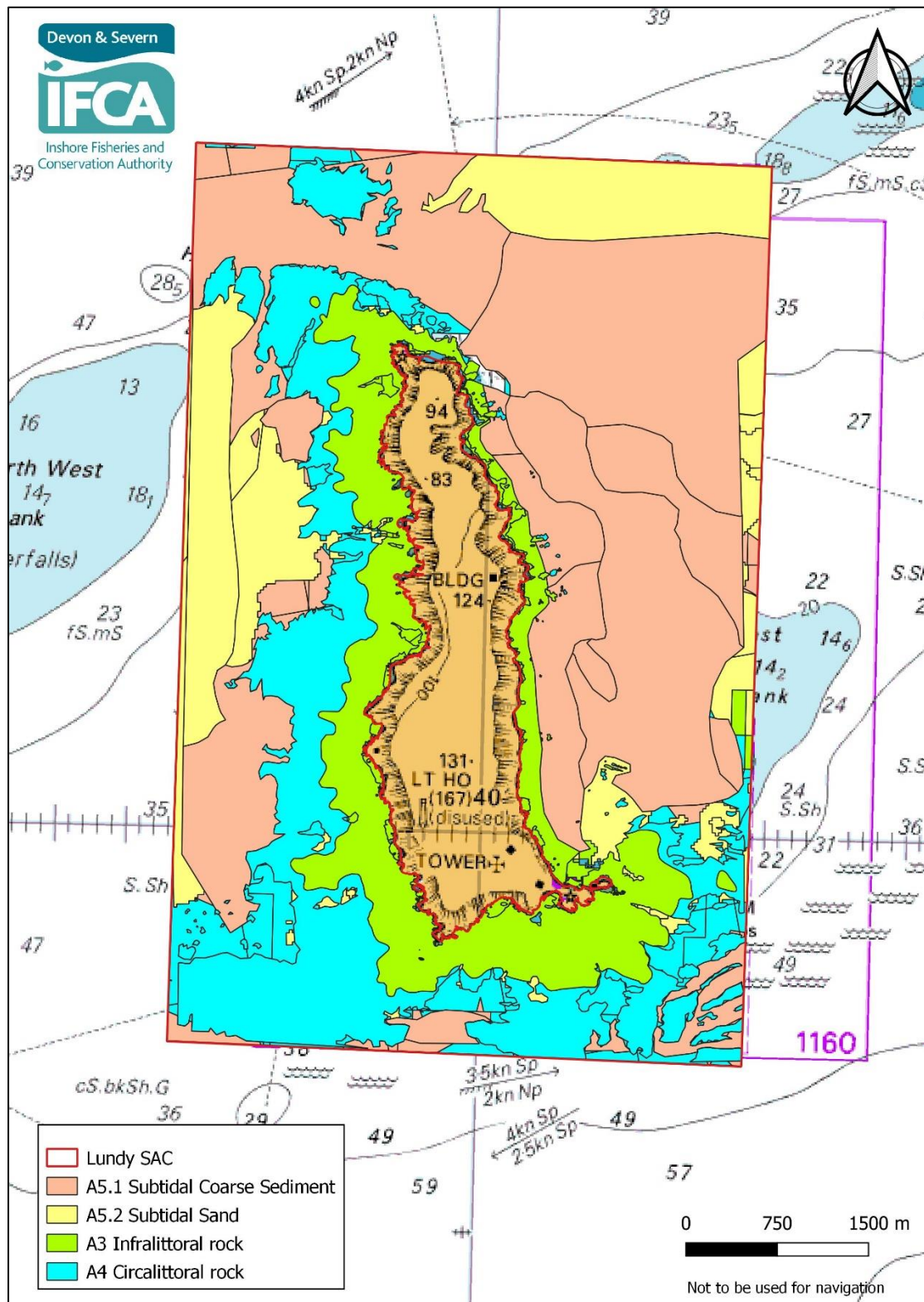
2. Review of Habitat Data

The second part of the M&C Plan was to review the results of the 2017 EA survey of the site. This report is yet to be released and, therefore, this part of the plan cannot be completed at this time. Once the results are available, they will be reviewed.

Summary

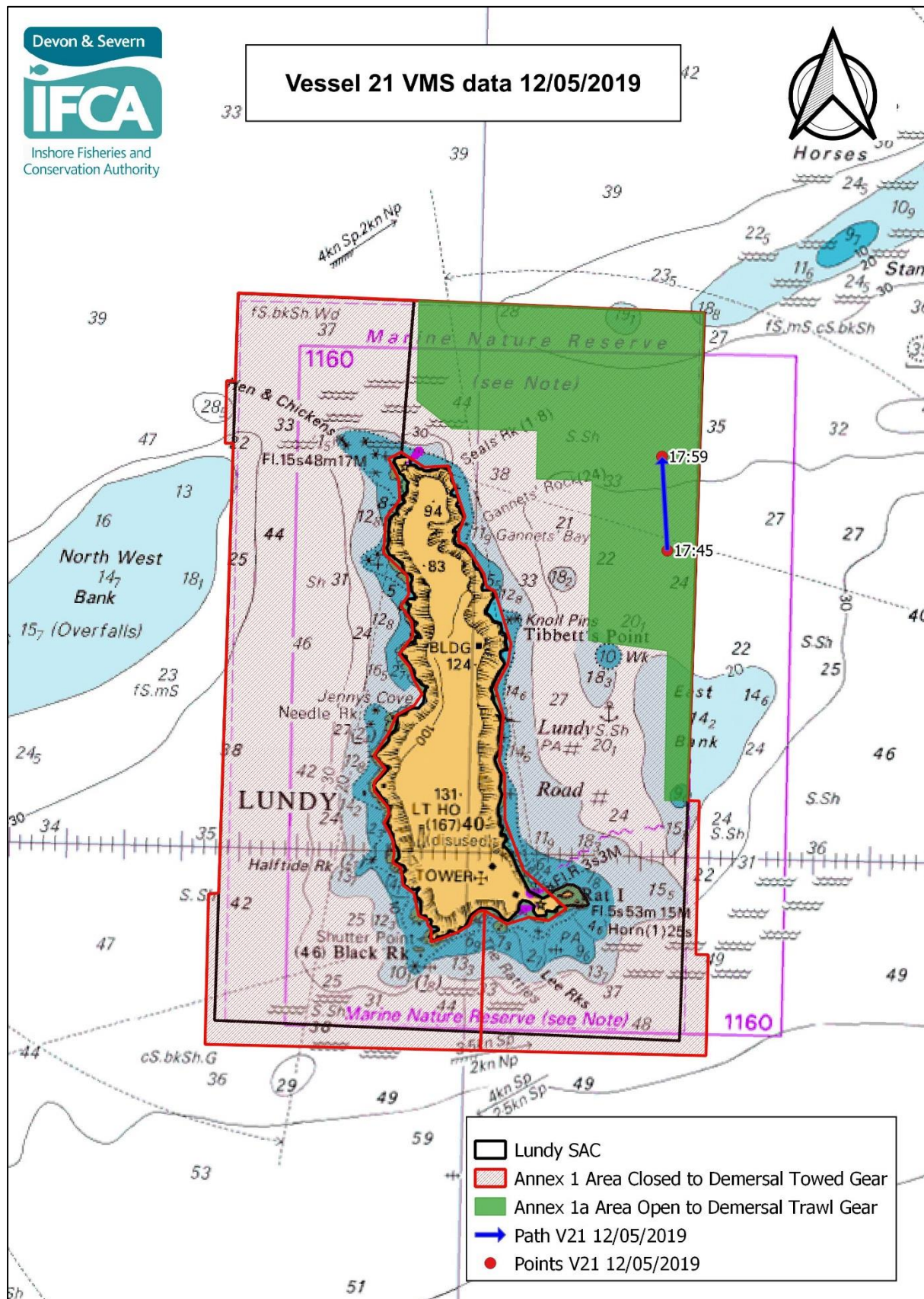
Due to the low level of trawling activity indicated in the VMS data, and the absence of new habitat information, a review of the HRA is not appropriate at this time. As indicated, once the EA survey data becomes available, the VMS data and new habitat data will be assessed together; this may lead to a review of the HRA if required.

Annex 1- Lundy SAC Feature Map

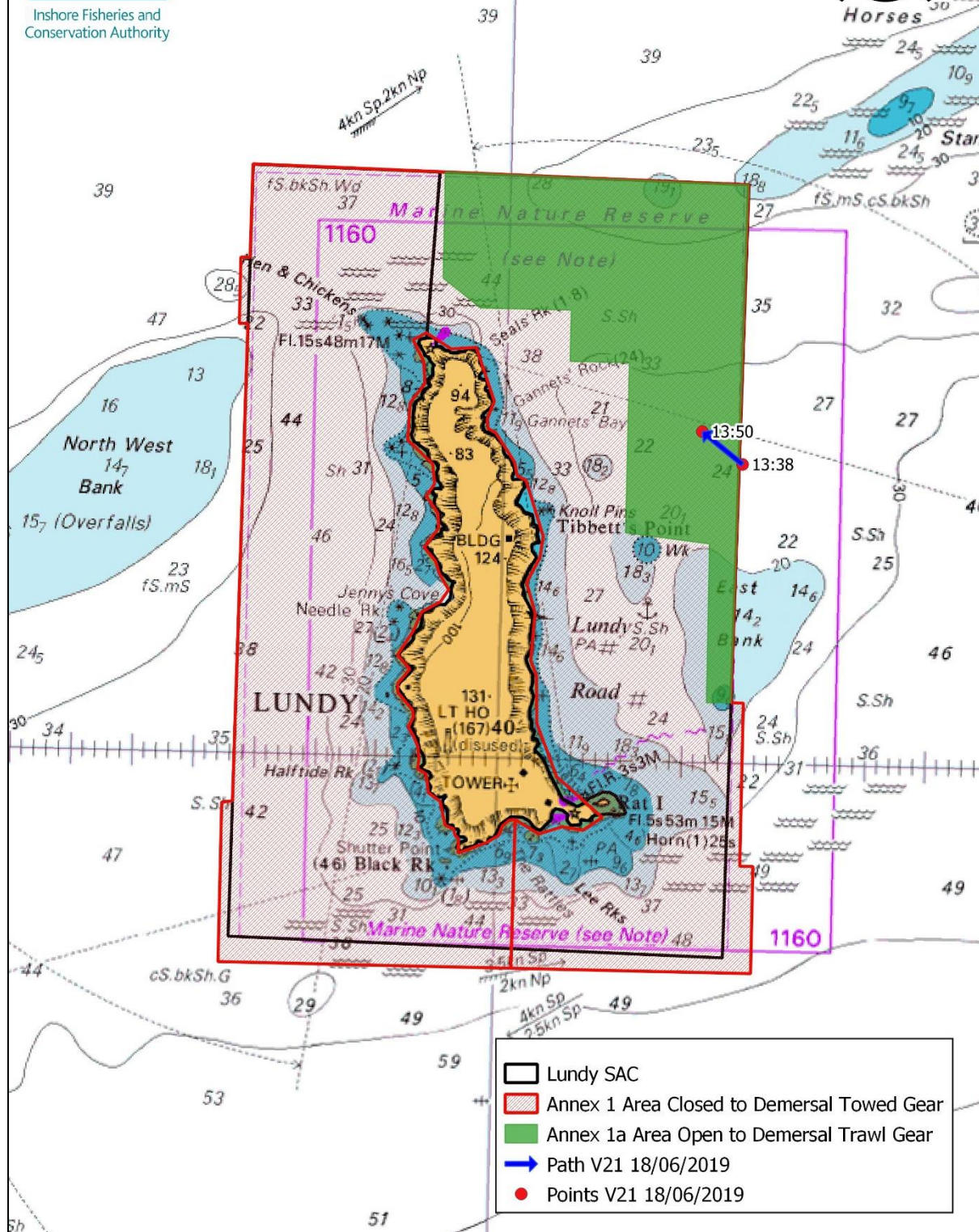


Annex 2- Fishing activity maps from VMS data

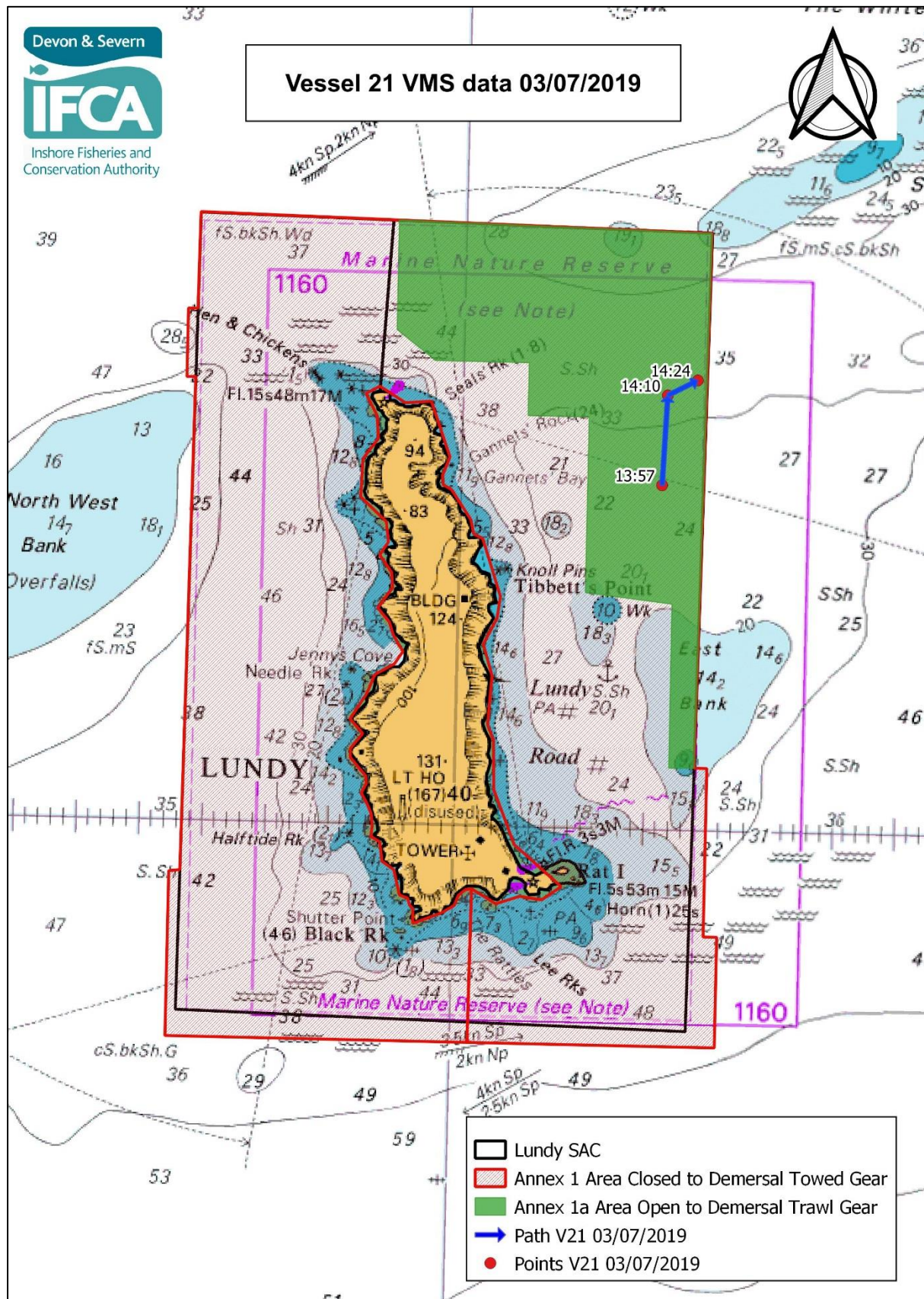
Vessel 21 VMS data 12/05/2019



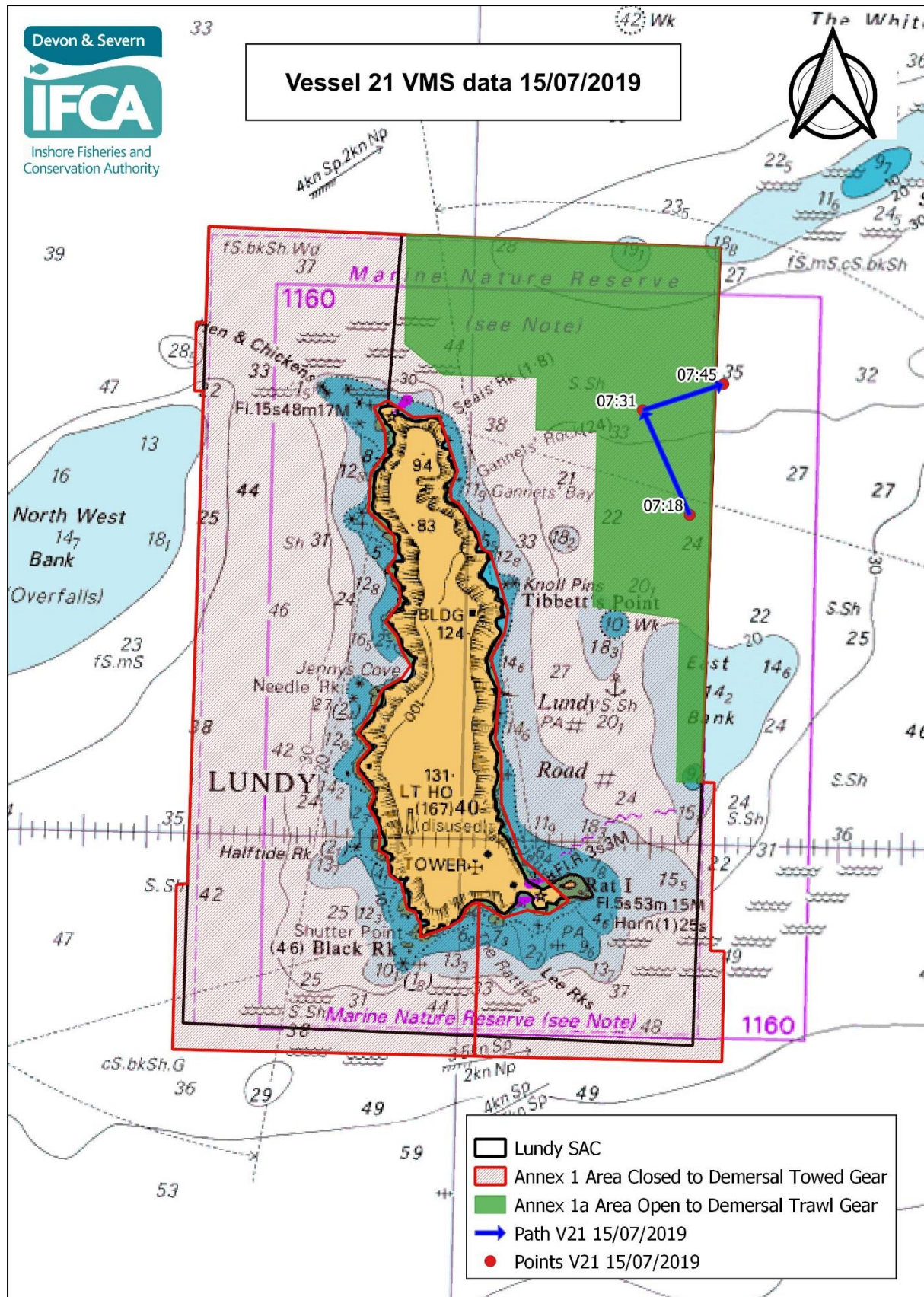
Vessel 21 VMS data 18/06/2019



Vessel 21 VMS data 03/07/2019



Vessel 21 VMS data 15/07/2019



Vessel 22 VMS data 01/07/2019

