

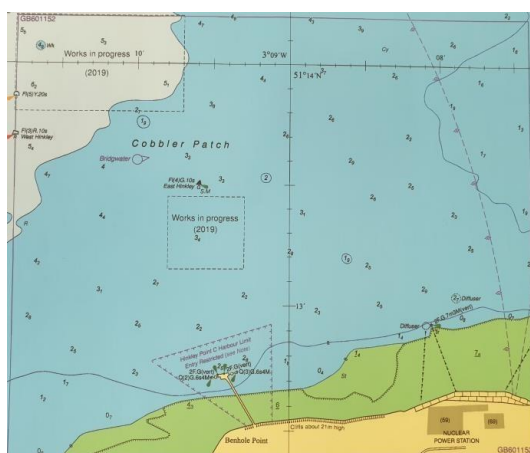
Devon and Severn IFCA News

Notice to Mariners: Mapping Survey at Hinkley Point C

Mariners are advised about a habitat mapping survey within Hinkley Point C Harbour Limits

A Notice to Mariners has been issued by the Hinkley Point C Harbour Authority.

Mariners are advised that from the 16th April 2020 for a period up to four weeks, the vessel Seren Las will be operating within Hinkley Point C Harbour limits and approaches. She will be conducting a habitat mapping survey. Seren Las may be contacted directly and will maintain a listening watch on VHF channel 16 and 87.



Name	Type of Vessel	Call Sign	MMSI Number	Length
Seen Las	Survey Vessel	MDAH2	235087047	10.4 metres

During survey operations the Seren Las will be towing gear up to 40 metres astern. She will be restricted in her ability to manoeuvre and will display the lights and shapes in accordance with the International Regulations for Preventing Collisions at Sea 1972 (as amended).

Vessels within this area are requested to proceed with caution and maintain a **minimum safe distance of 2 cables**.

This notice will be self-cancelling on completion of the survey works. For further information, please contact the Harbour Master via the contact details below.

William Barker
Harbour Master – Hinkley Point C

EDF Energy - Nuclear New Build, Hinkley Point C, Somerset, TA5 1UF
Tel. 0800 096 9650 (24hr)

hinkley-enquiries@edf-energy.com
www.edfenergy.com/hpcha