

Devon and Severn IFCA News

Commercial Scallop Season Now Open

From 0700 hours on the 1st October 2018 the fishing of Scallops (*Pecten maximus*) for commercial purposes has reopened.



The commercial Scallop season is now open within the Devon and Severn IFCA District. Under the DSIFCA Mobile Fishing Permit Byelaw (At Sea) [Permit Conditions](#) and the DSIFCA Diving Permit Byelaw [Permit Conditions](#), each year the DSIFCA operates a closed season for commercial Scallop fishing between July and September. This prohibits the removal of Scallops from a fishery within the DSIFCA District to allow the stocks to recover.

From the 1st October fishing commercially for Scallops is now allowed, although conditions are placed on fishers targeting Scallops. These conditions include but are not limited to, the authorisation to use Scallop dredge gear and commercially dive for Scallops within the district between 0700hours (local time) and 1900 hours (local time) and from the 28th August 2018, the requirement for all mobile fishing vessels between 6.99 metres and 15.25 metres in length to carry a fully functioning [I-VMS](#) unit onboard. All fishers, including recreational fishers, are also not authorised to remove any Scallop from the fishery that measures less than 100 millimetres measured across the broadest part of the shell.

Mobile Gear vessels should also be aware of the various Aquaculture sites within Tor Bay and Lyme Bay. These include the;

Lyme Bay Mussel Farm Site 1

50° 35.556' N, 3° 15.086' W
50° 35.927' N, 3° 13.488' W
50° 34.397' N, 3° 12.632' W
50° 34.397' N, 3° 12.632' W
50° 34.025' N, 3° 14.205' W
50° 34.803' N, 3° 14.669' W

Lyme Bay Mussel Farm Site 2

50° 39.010' N, 3° 11.700' W
50° 39.200' N, 3° 10.028' W
50° 38.398' N, 3° 09.815' W
50° 37.600' N, 3° 09.600' W
50° 37.405' N, 3° 11.281' W
50° 38.203' N, 3° 11.496' W

Labrador Bay Mussel Farm

50° 31.030' N, 3° 29.640' W

50° 31.333' N, 3° 29.600' W

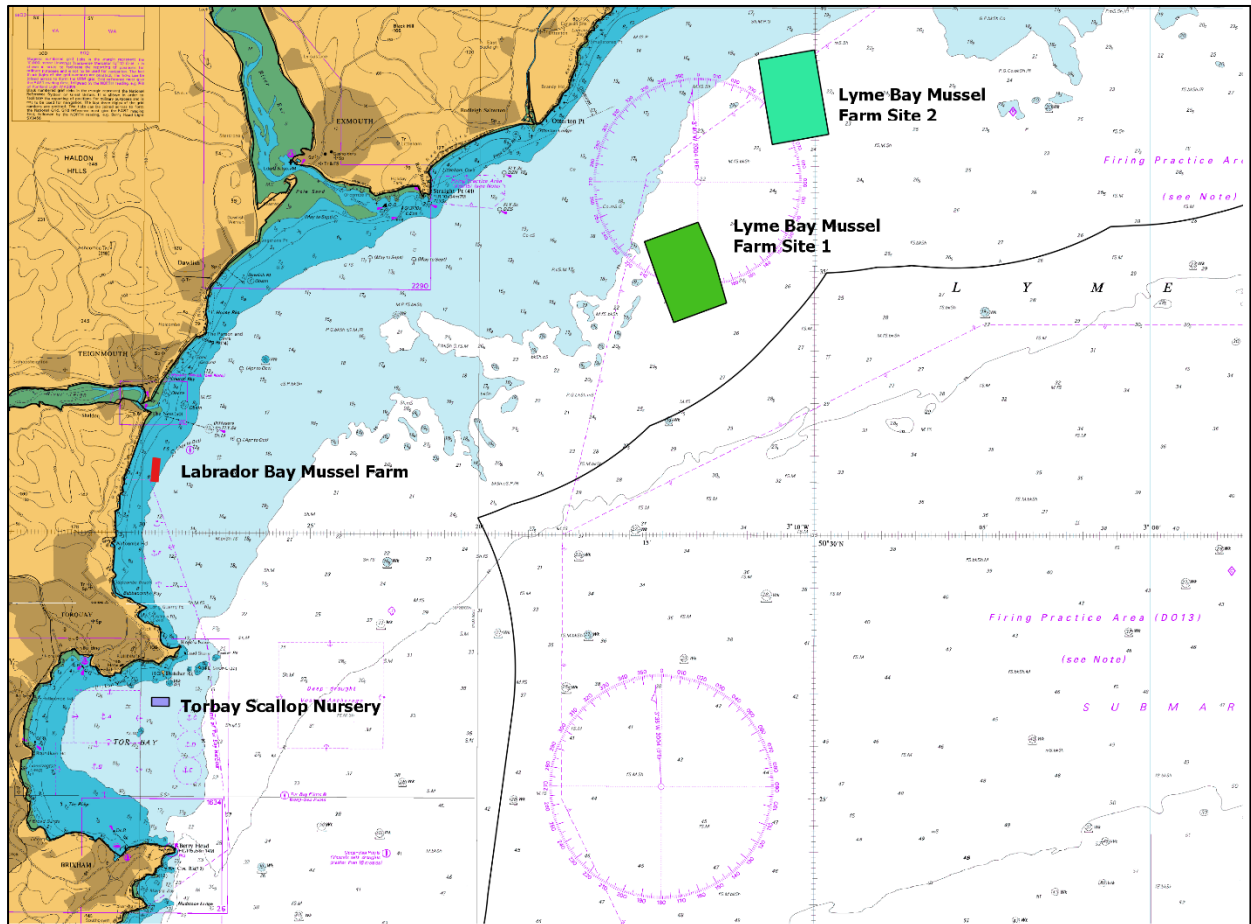
Torbay Scallop Nursery

50° 26.700' N, 3° 29.690' W

50° 26.700' N, 3° 29.170' W

50° 26.865' N, 3° 29.170' W

50° 26.865' N, 3° 29.690' W



For further information or queries about the Scallop season please contact the DSIFCA Office on 01803 854648 or email info@devonandsevernifca.gov.uk