

Devon and Severn IFCA News

Seaweed Farm Installation - Bideford Bay North Devon

D&S IFCA is sharing a Local Notice to Mariners regarding the installation of a seaweed farm in Bideford Bay, North Devon by Algapelago Marine Limited.



Notification of Seaweed Farm Installation For Bideford Bay Seaweed Farm, North Devon

Marine Licence No: L/2022/00127/1

1 November 2022

Introduction

Algapelago Marine Limited (AML) is installing a 100 Ha seaweed farm off the North Devon Coast in Bideford Bay. The site perimeter will be marked according to the Trinity House guidelines (see Appendix I) and will be developed incrementally across 2-5 years. The infrastructure will comprise a tried and tested system used in offshore farming. It has proven stability in similar physical conditions within south west waters. It will comprise of long-lines, similar to those used in mussel farming. The site (as agreed with stakeholders) is located in 17-18 metres at Chart Datum of water ~4 NM due north of Clovelly harbour and ~5NM west southwest of the Bideford Bar (Figure 1/Table 1).

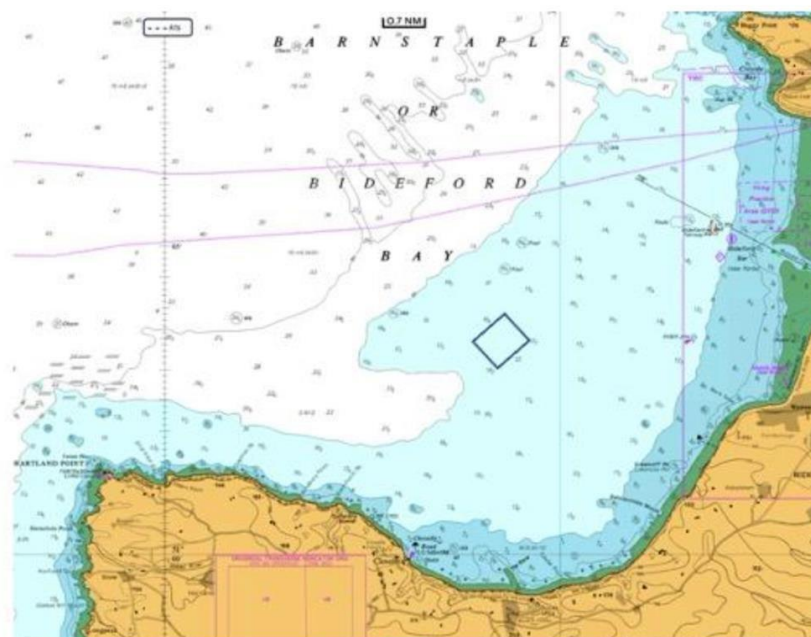


Figure 1: Planned Location for the farm

Farm Corner positions	Decimal Degrees Lat	DMS Latitude	Decimal degrees Long	DMS Longitude
1	51.057730	51° 3'27.828"N	-4.369917	4°22'11.7012"W
2	51.052042	51° 3'7.3512"N	-4.360426	4°21'37.5336"W
3	51.060236	51° 3'36.85"N	-4.347000	4°20'49.20"W
4	51.065769	51° 3'56.77"N	-4.356192	4°21'22.29"W

Table 1: Co-ordinates for corners of planned farm location

Installation Summary:

Weather permitting from Mid-November to Mid-December 2022. Algapelago Marine Limited will be deploying a seaweed farm as per Marine Licence No: L/2022/00127/1.

The farm will occupy a site of ~1km² in a central area of Bideford or Barnstaple Bay.

Farm Infrastructure Detail:

The total farm will cover an area of approximately 1km². The main infrastructure of the farm is a series of submerged 220m long-lines (ropes) anchored with eco-block moorings.

The ends of the longlines are marked by yellow buoys and the 'backbones' are obvious by the 300 litre floats tied in series which float above the submerged backbone carrying the cultivation or growing lines.

The lines lie at a maximum of 2-8m below the surface.

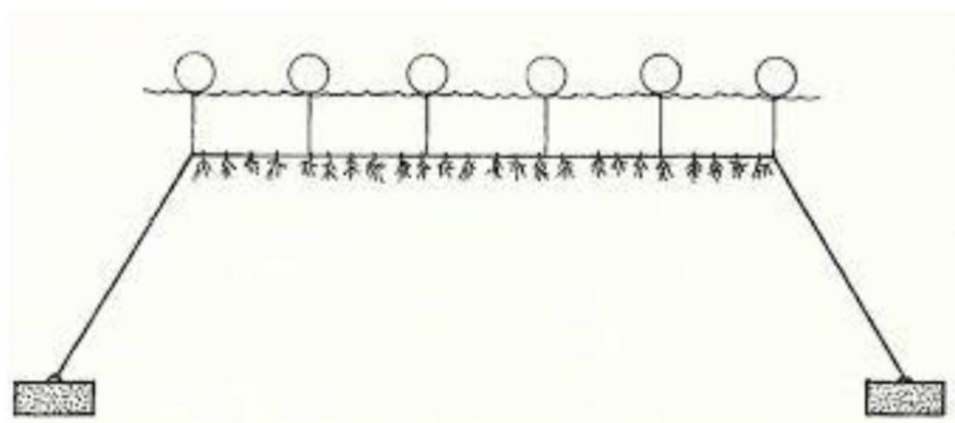


Figure 3: Farm plan & layout / Infrastructure design

Farm installation Detail and Timings:

The farm will be deployed in several phases:

1. Deployment of 6 Yellow Special Marks (Fl.Y.5s light, surmounted by a yellow 'X' shaped top mark.) as aids to navigation marking the perimeter of the farm. (Estimated deployment from 16th November to 25th November 2022).
2. Deployment of longline mooring blocks and ground tackle (with pennant lines and buoys) for anchoring the pilot seaweed lines. (Estimated deployment from 18th November – 25th November 2022).
3. Deployment and rigging of 220m Longlines (also known as headlines / backbones). (18th November to 30th November 2022).
4. Deployment and rigging of seeded seaweed cultivation lines. (29th November to 10th December 2022).
5. 1st December 2022 onward - farm enters routine inspection and maintenance programme.

For any queries or questions please contact:

Oliver Hicks
Algapelago Marine Limited
olly@algapelago.com

info@algapelago.com

Tel: 07919 417845

++ ENDS ++

More information about D&S IFCA

Our website includes a range of display pages and an interactive publication scheme ([Resource Library](#)). [Contact Us](#) or find out more [About Us and Our Work](#).