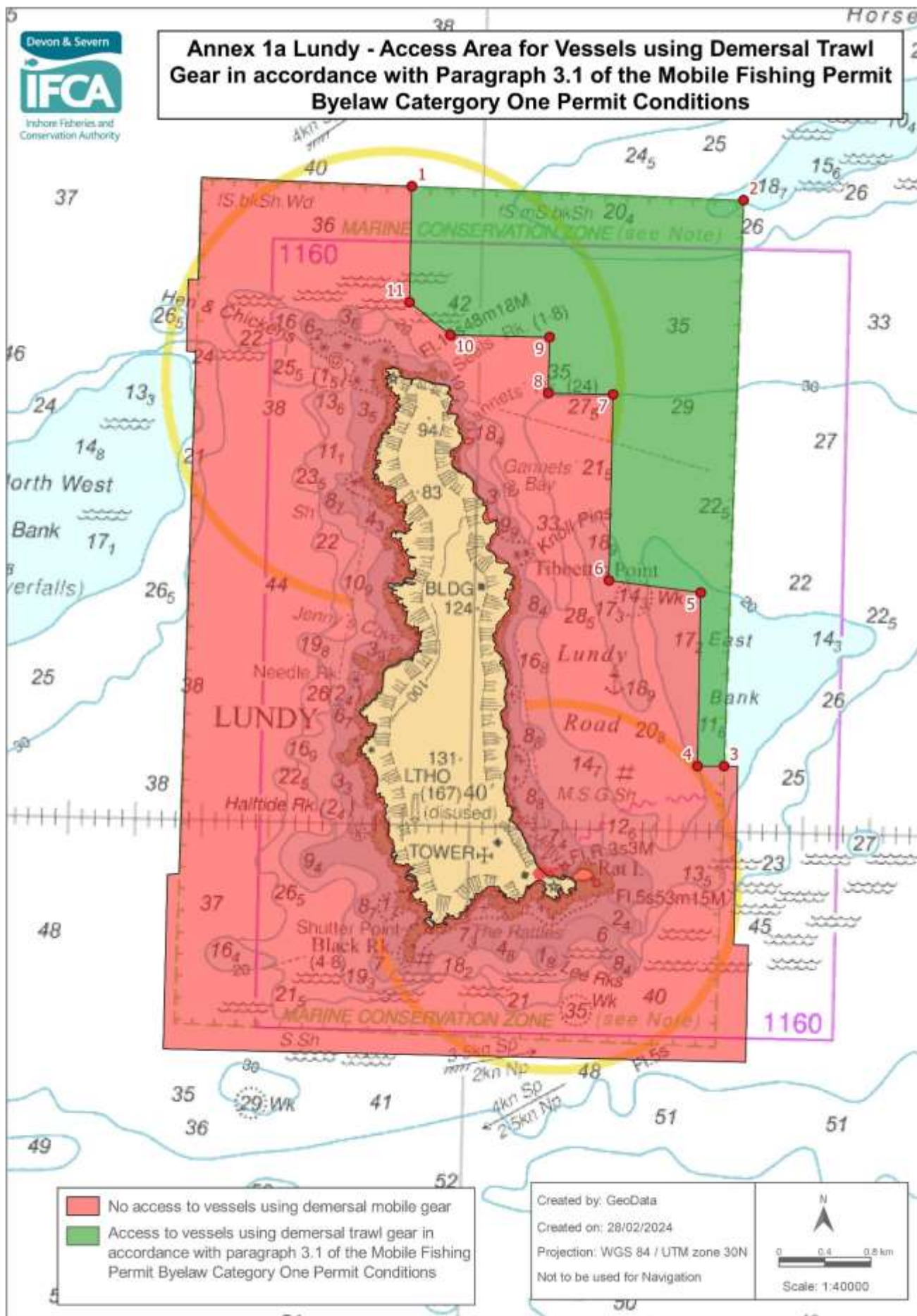


Annex 1 Lundy – No Access Area for Vessels using Demersal Mobile Gear.

No access to vessels using demersal mobile gear in the area within the D&S IFCA District outlined by the following points plotted sequentially from Point 1 to Point 14, then returning to Point 1. The landward boundary follows Mean High Water.

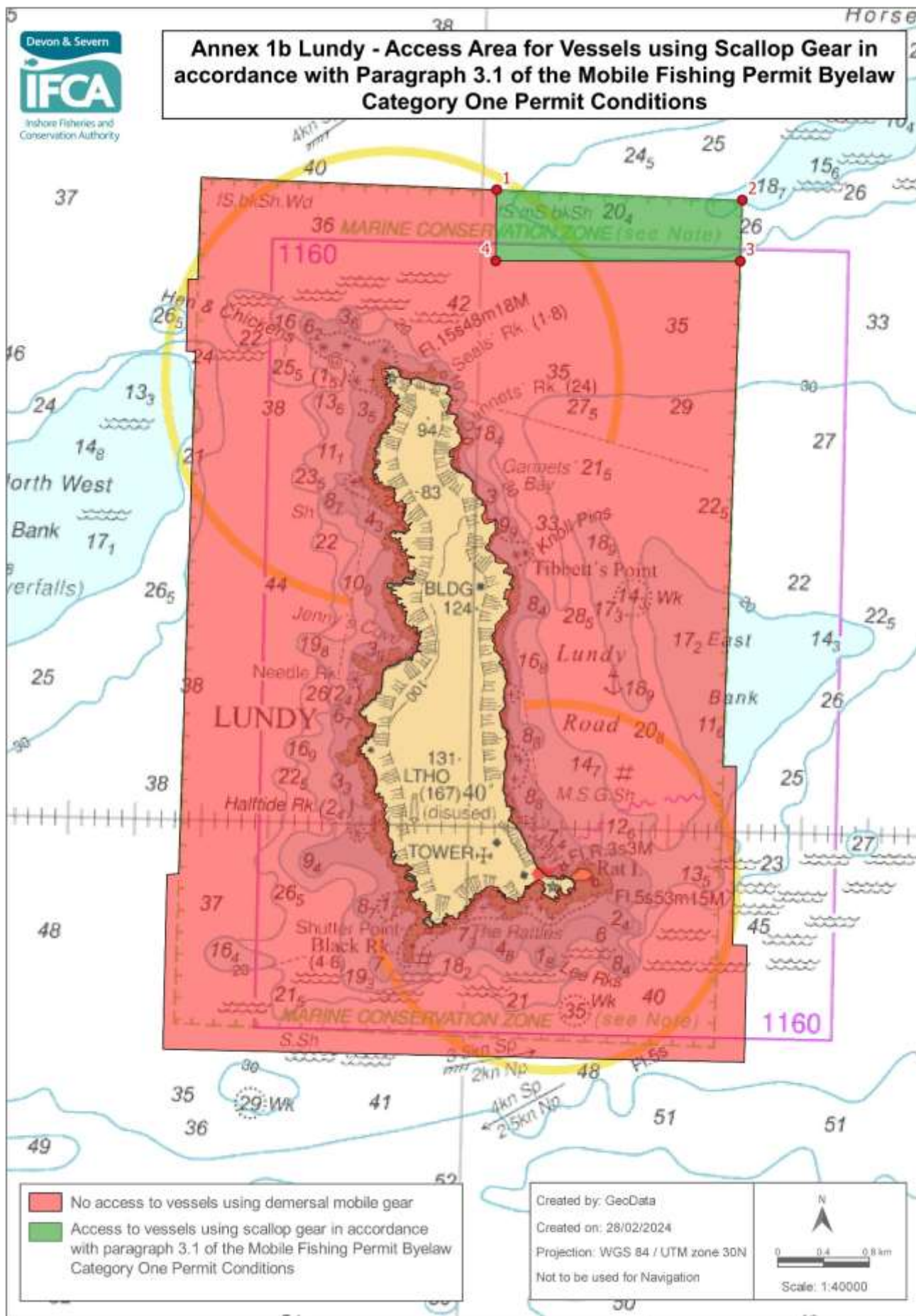
Point Number	Latitude	Longitude
1	51°13.022 N	004°42.116 W
2	51°12.972 N	004°38.049 W
3	51°10.303 N	004°38.100 W
4	51°10.303 N	004°37.998 W
5	51°09.462 N	004°37.998 W
6	51°09.462 N	004°37.890 W
7	51°08.910 N	004°37.890 W
8	51°08.910 N	004°42.252 W
9	51°09.732 N	004°42.252 W
10	51°09.739 N	004°42.164 W
11	51°12.200 N	004°42.128 W
12	51°12.200 N	004°42.198 W
13	51°12.540 N	004°42.198 W
14	51°12.540 N	004°42.123 W



Annex 1a Lundy – Access Area for Vessels using Demersal Trawl Gear in accordance with Paragraph 3.1 of the Mobile Fishing Permit Byelaw Category One Permit Conditions.

Access area for demersal trawl gear within the D&S IFCA District outlined by the following points plotted sequentially from Point 1 to Point 11, then returning to Point 1.

Point Number	Latitude	Longitude
1	51° 13.003 N	004° 40.538 W
2	51° 12.972 N	004° 38.049 W
3	51° 10.303 N	004° 38.100 W
4	51° 10.300 N	004° 38.300 W
5	51° 11.118 N	004° 38.304 W
6	51° 11.166 N	004° 38.994 W
7	51° 12.042 N	004° 38.994 W
8	51° 12.042 N	004° 39.480 W
9	51° 12.306 N	004° 39.480 W
10	51° 12.306 N	004° 40.224 W
11	51° 12.456 N	004° 40.536 W



Annex 1b Lundy – Access Area for Vessels using Scallop Gear in accordance with Paragraph 3.1 of the Mobile Fishing Permit Byelaw Category One Permit Conditions.

Access area for scallop gear within the D&S IFCA District outlined by the following points plotted sequentially from Point 1 to Point 4, then returning to Point 1.

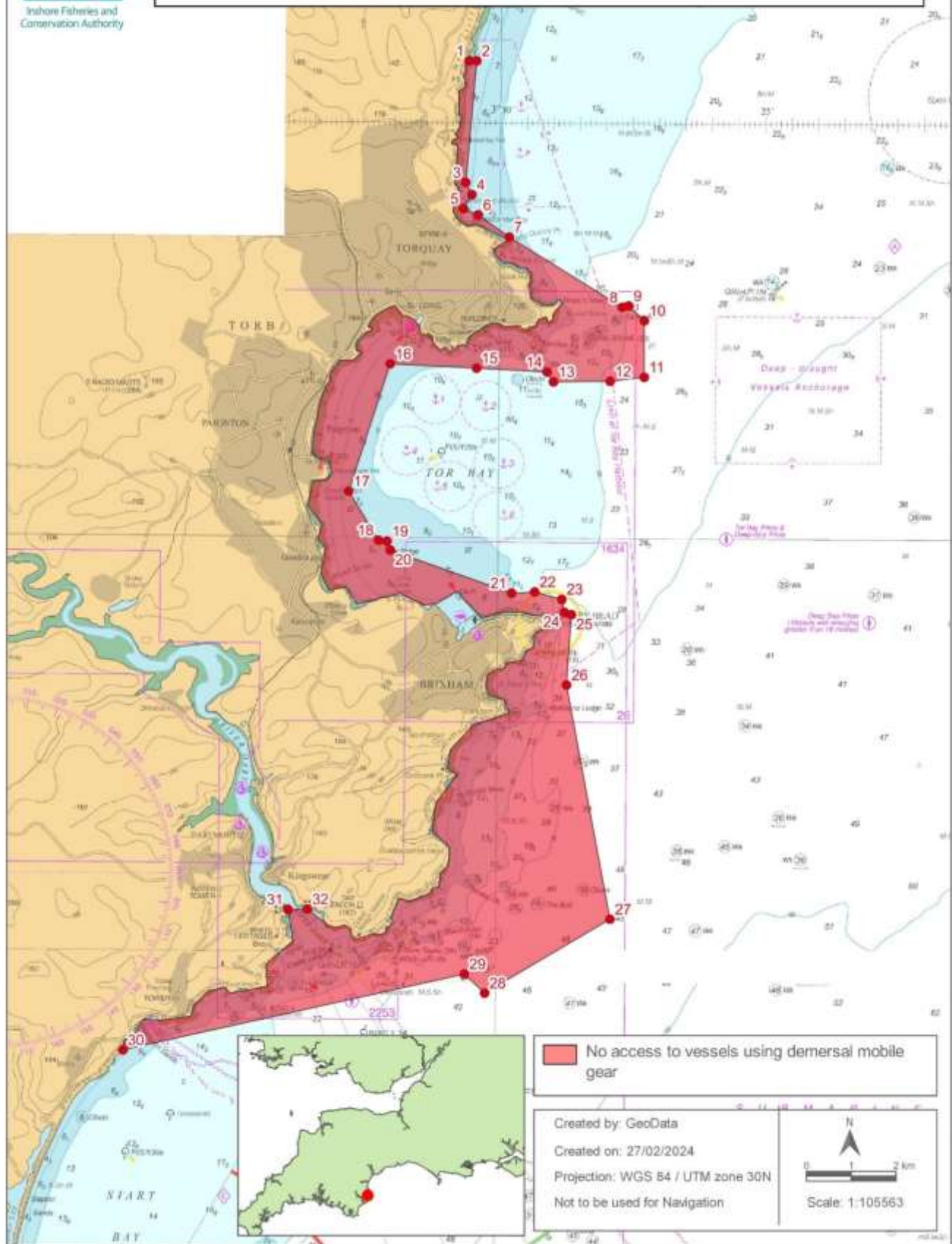
Point number	Latitude	Longitude
1	51° 12.995 N	004° 38.895 W
2	51° 12.972 N	004° 38.049 W
3	51° 12.684 N	004° 38.054 W
4	51° 12.660 N	004° 39.890 W

Annex 2 Lyme Bay – No Access Area to Vessels using Demersal Mobile Gear.

No access to vessels using demersal mobile gear in the area within the D&S IFCA District outlined by the following points plotted sequentially from Point 1 to Point 34, then returning to Point 1. The landward boundary follows Mean High Water.

Point number	Latitude	Longitude
1	50° 43.128 N	002° 56.784 W
2	50° 38.004 N	002° 56.784 W
3	50° 38.004 N	002° 58.551 W
4	50° 38.004 N	003° 01.817 W
5	50° 37.622 N	003° 01.901 W
6	50° 37.500 N	003° 01.648 W
7	50° 37.314 N	003° 01.648 W
8	50° 37.262 N	003° 01.980 W
9	50° 37.150 N	003° 02.009 W
10	50° 36.986 N	003° 01.839 W
11	50° 36.848 N	003° 01.908 W
12	50° 36.844 N	003° 02.071 W
13	50° 36.241 N	003° 02.064 W
14	50° 36.186 N	003° 02.223 W
15	50° 35.917 N	003° 02.283 W
16	50° 35.790 N	003° 02.686 W
17	50° 36.568 N	003° 03.393 W
18	50° 36.552 N	003° 03.485 W
19	50° 36.640 N	003° 03.598 W
20	50° 36.743 N	003° 03.562 W
21	50° 37.846 N	003° 04.632 W
22	50° 37.873 N	003° 04.782 W
23	50° 38.006 N	003° 04.835 W
24	50° 38.000 N	003° 06.000 W
25	50° 39.303 N	003° 06.000 W
26	50° 39.667 N	003° 06.800 W
27	50° 39.667 N	003° 07.438 W
28	50° 39.908 N	003° 07.433 W
29	50° 39.904 N	003° 06.796 W
30	50° 40.583 N	003° 06.367 W
31	50° 40.625 N	003° 06 000W
32	50° 40.843 N	003° 06.006 W
33	50° 40.870 N	003° 06.851 W
34	50° 41.171 N	003° 06.837 W
Landward boundary follows mean high water to Point 1		

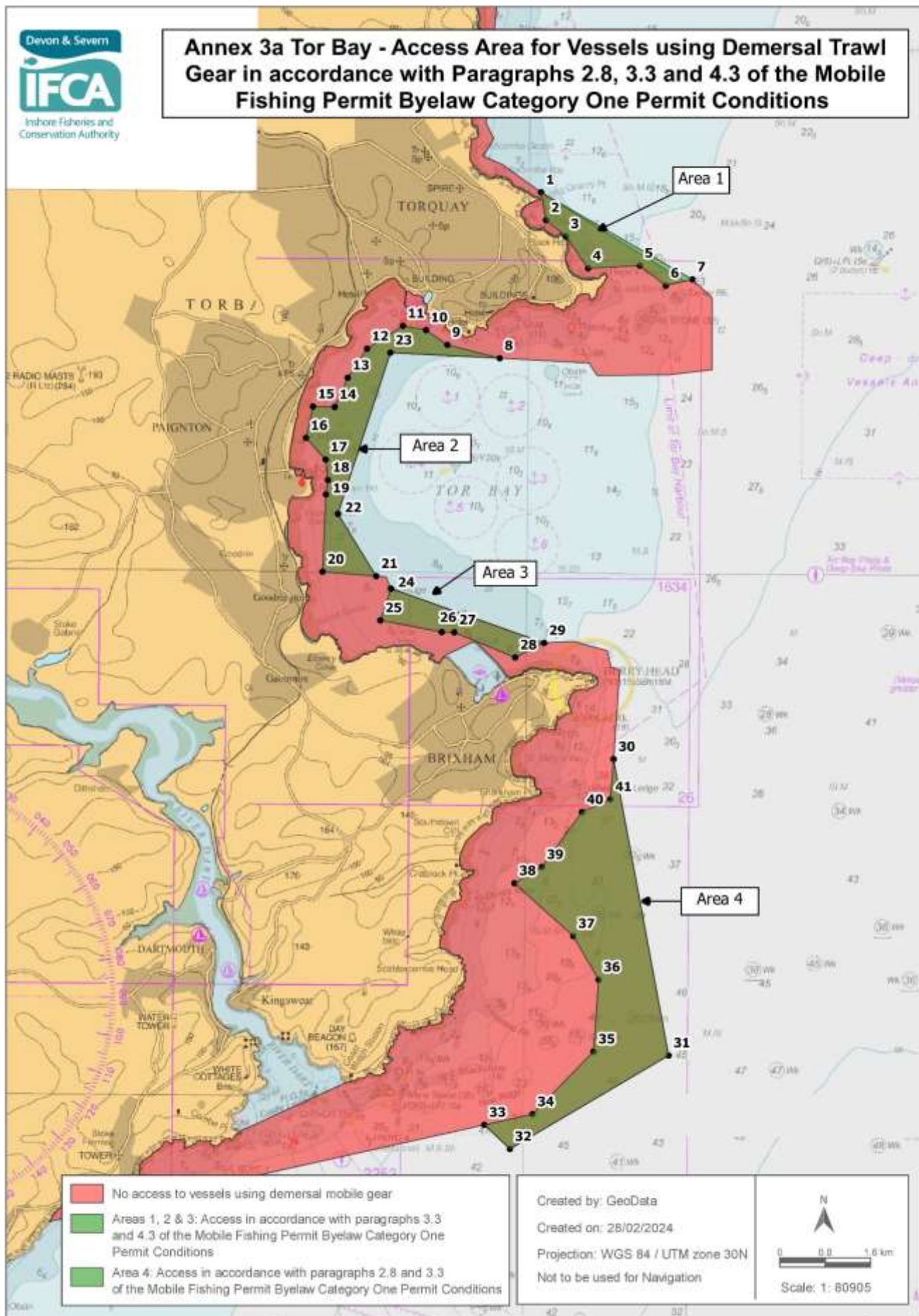
Annex 3 Tor Bay - No Access to Vessels using Demersal Mobile Gear



Annex 3 Tor Bay – No Access Area for Vessels using Demersal Mobile Gear.

No access to vessels using demersal mobile gear in the area within the D&S IFCA District outlined by the following points plotted sequentially from Point 1 to Point 32, then returning to Point 1. The landward boundary follows Mean High Water.

Point number	Latitude	Longitude
1	50° 30.733 N	003° 30.612 W
2	50° 30.733 N	003° 30.467 W
3	50° 29.267 N	003° 30.659 W
4	50° 29.120 N	003° 30.541 W
5	50° 28.950 N	003° 30.700 W
6	50° 28.878 N	003° 30.420 W
7	50° 28.612 N	003° 29.832 W
8	50° 27.775 N	003° 27.685 W
9	50° 27.792 N	003° 27.568 W
10	50° 27.615 N	003° 27.270 W
11	50° 26.933 N	003° 27.267 W
12	50° 26.882 N	003° 27.911 W
13	50° 26.871 N	003° 28.979 W
14	50° 26.989 N	003° 29.100 W
15	50° 27.030 N	003° 30.432 W
16	50° 27.075 N	003° 32.062 W
17	50° 25.538 N	003° 32.827 W
18	50° 24.949 N	003° 32.258 W
19	50° 24.938 N	003° 32.098 W
20	50° 24.831 N	003° 32.035 W
21	50° 24.321 N	003° 29.741 W
22	50° 24.338 N	003° 29.307 W
23	50° 24.250 N	003° 28.796 W
24	50° 24.096 N	003° 28.745 W
25	50° 24.067 N	003° 28.613 W
26	50° 23.212 N	003° 28.696 W
27	50° 20.400 N	003° 27.850 W
28	50° 19.500 N	003° 30.200 W
29	50° 19.727 N	003° 30.583 W
30	50° 18.783 N	003° 36.983 W
Landward boundary follows mean high water to Point 31		
31	50° 20.493 N	003° 33.914 W
32	50° 20.497 N	003° 33.549 W
Landward boundary follows mean high water to Point 1		



Annex 3a Tor Bay – Access Areas (1, 2, 3 and 4) for Vessels using Demersal Trawl Gear in accordance with Paragraphs 2.8, 3.3 and 4.3 of the Mobile Fishing Permit Byelaw Category One Permit Conditions.

Area 1

Access areas for demersal trawl gear within the D&S IFCA District outlined by the following points plotted sequentially from Point 1 to Point 7, then returning to Point 1.

Point Number	Latitude	Longitude
1	50° 28.612 N	003° 29.832 W
2	50° 28.347 N	003° 29.755 W
3	50° 28.194 N	003° 29.459 W
4	50° 27.891 N	003° 29.125 W
5	50° 27.920 N	003° 28.353 W
6	50° 27.731 N	003° 27.963 W
7	50° 27.792 N	003° 27.568 W

Area 2

Access areas for demersal trawl gear within the D&S IFCA District outlined by the following points plotted sequentially from Point 8 to Point 23, then returning to Point 8.

Point number	Latitude	Longitude
8	50° 27.030 N	003° 30.432 W
9	50° 27.154 N	003° 31.214 W
10	50° 27.293 N	003° 31.533 W
11	50° 27.331 N	003° 31.878 W
12	50° 27.111 N	003° 32.411 W
13	50° 26.833 N	003° 32.695 W
14	50° 26.554 N	003° 32.886 W
15	50° 26.557 N	003° 33.210 W
16	50° 26.257 N	003° 33.311 W
17	50° 26.053 N	003° 33.015 W
18	50° 25.858 N	003° 32.980 W
19	50° 25.721 N	003° 33.007 W
20	50° 24.984 N	003° 33.050 W
21	50° 24.946 N	003° 32.250 W
22	50° 25.537 N	003° 32.827 W
23	50° 27.075 N	003° 32.062 W

Area 3

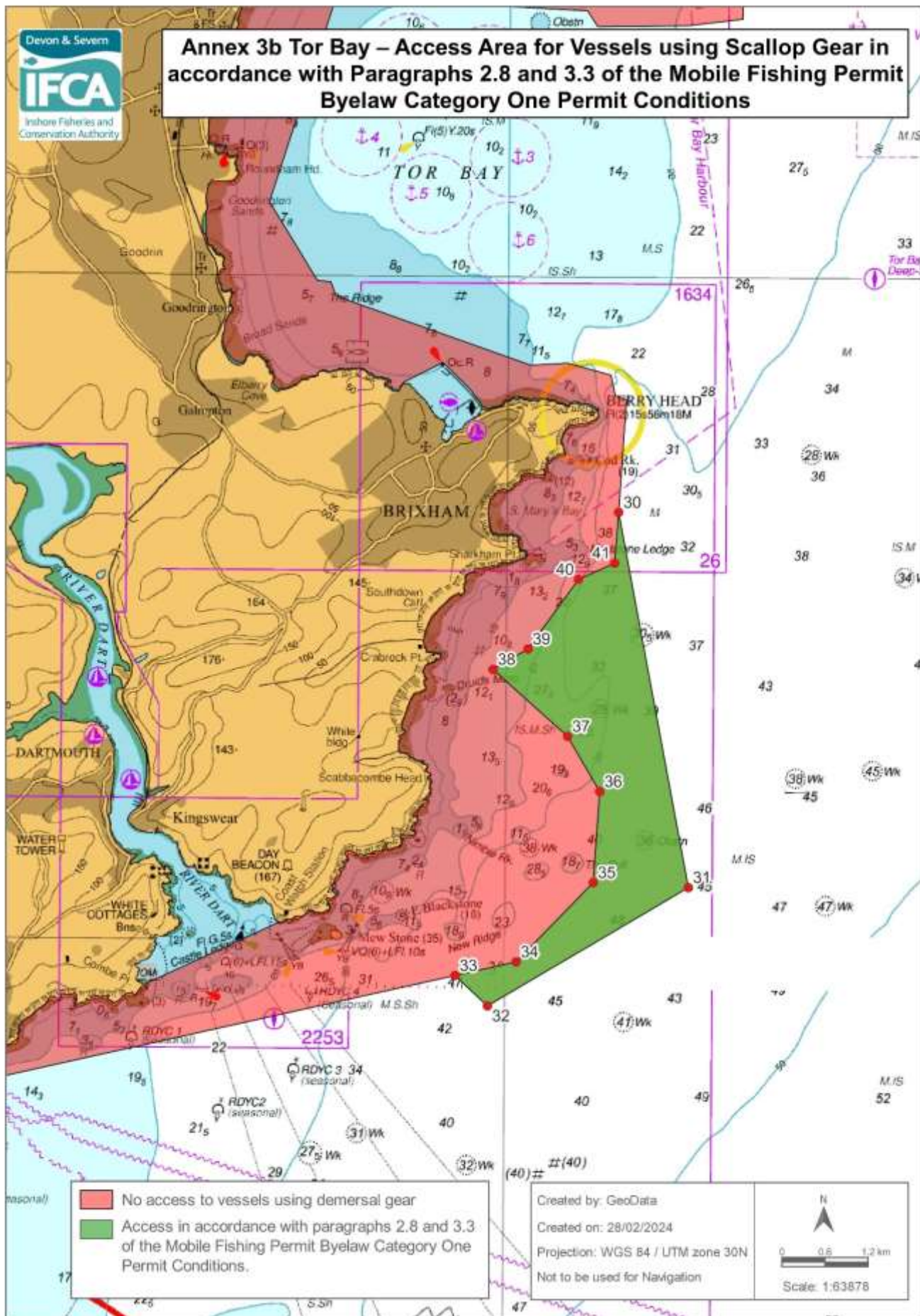
Access areas for demersal trawl gear within the D&S IFCA District outlined by the following points plotted sequentially from Point 24 to Point 29, then returning to Point 24

Point number	Latitude	Longitude
24	50° 24.828 N	003° 32.027 W
25	50° 24.525 N	003° 32.183 W
26	50° 24.418 N	003° 31.268 W
27	50° 24.416 N	003° 31.082 W
28	50° 24.181 N	003° 30.171 W
29	50° 24.321 N	003° 29.741 W

Area 4

Access areas for demersal trawl gear within the D&S IFCA District outlined by the following points plotted sequentially from Point 30 to Point 41, then returning to Point 30.

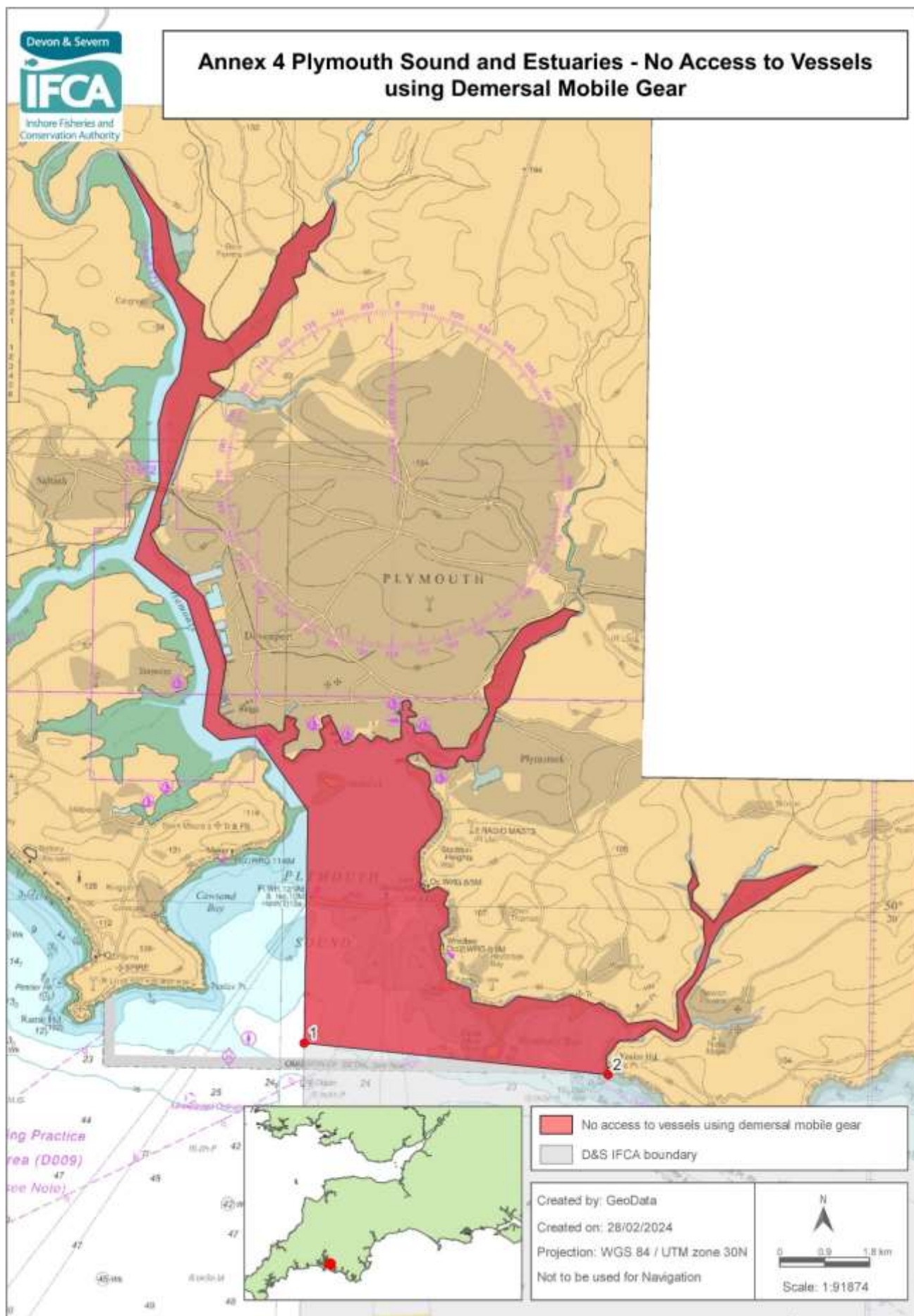
Point number	Latitude	Longitude
30	50° 23.212 N	003° 28.696 W
31	50° 20.400 N	003° 27.850 W
32	50° 19.500 N	003° 30.200 W
33	50° 19.727 N	003° 30.583 W
34	50° 19.833 N	003° 29.867 W
35	50° 20.433 N	003° 28.967 W
36	50° 21.118 N	003° 28.898 W
37	50° 21.531 N	003° 29.279 W
38	50° 22.031 N	003° 30.160 W
39	50° 22.187 N	003° 29.752 W
40	50° 22.713 N	003° 29.163 W
41	50° 22.836 N	003° 28.740 W



Annex 3b Tor Bay – Access Area for Vessels using Scallop Gear in accordance with Paragraphs 2.8 and 3.3 of the Mobile Fishing Permit Byelaw Category One Permit Conditions.

Access area for scallop gear within the D&S IFCA District outlined by the following points plotted sequentially from Point 30 to Point 41, then returning to Point 30.

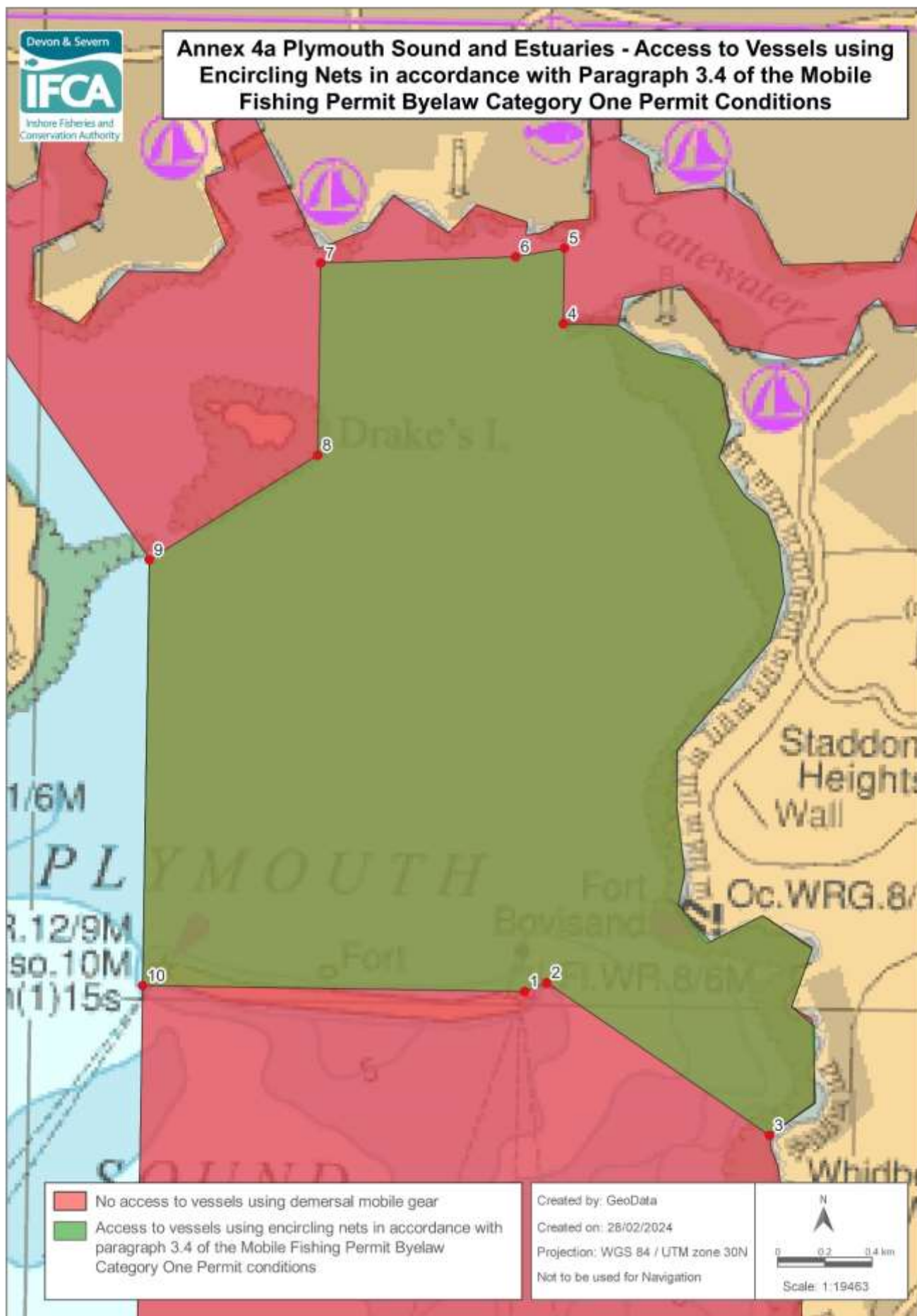
Point number	Latitude	Longitude
30	50° 23.212 N	003° 28.696 W
31	50° 20.400 N	003° 27.850 W
32	50° 19.500 N	003° 30.200 W
33	50° 19.727 N	003° 30.583 W
34	50° 19.833 N	003° 29.867 W
35	50° 20.433 N	003° 28.967 W
36	50° 21.118 N	003° 28.898 W
37	50° 21.531 N	003° 29.279 W
38	50° 22.031 N	003° 30.160 W
39	50° 22.187 N	003° 29.752 W
40	50° 22.713 N	003° 29.163 W
41	50° 22.836 N	003° 28.740 W



Annex 4 – Plymouth Sound and Estuaries - No Access For Vessels using Demersal Mobile Gear.

No access to vessels using demersal mobile gear in all waters within the D&S IFCA District landward of a line drawn between Points 1 and 2. The landward boundary follows Mean High Water.

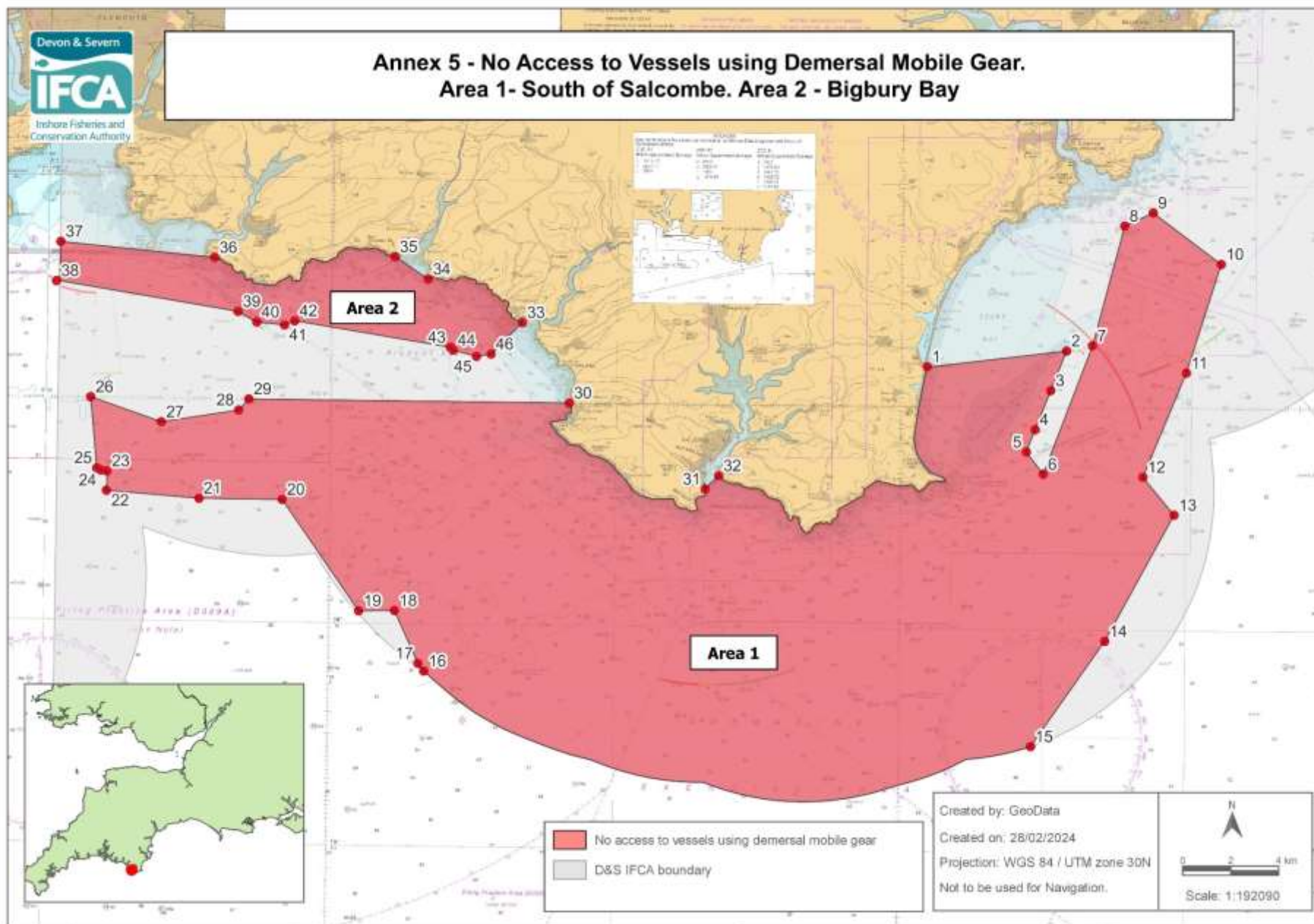
Point	Latitude	Longitude
1	50° 18.484 N	004° 09.600 W
2	50° 18.192 N	004° 04.458 W



Annex 4a Plymouth Sound and Estuaries - Access Area to Vessels using Encircling Nets in accordance with Paragraph 3.4 of the Mobile Fishing Permit Byelaw Category One Permit Conditions.

Access area for vessels using encircling nets within the D&S IFCA District outlined by the following points plotted sequentially from Point 1 to Point 10, then returning to Point 1. The landward boundary follows Mean High Water.

Point number	Latitude	Longitude
1	50° 20.023 N	004° 08.231 W
2	50° 20.044 N	004° 08.152 W
3	50° 19.701 N	004° 07.347 W
Landward boundary to follow mean high water to Point 4		
4	50° 21.556 N	004° 08.130 W
5	50° 21.729 N	004° 08.130 W
6	50° 21.708 N	004° 08.304 W
7	50° 21.687 N	004° 09.002 W
8	50° 21.246 N	004° 09.002 W
9	50° 21.000 N	004° 09.600 W
10	50° 20.023 N	004° 09.600 W



All Positions are expressed in degrees, decimal minutes (DDM) and shall be measured according to the WGS84 Geographic Co-ordinate System

Version control: Mobile Fishing Permit Byelaw Category 1 (At sea) Annexes

1st March 2024

Annex 5 – No Access Area for Vessels using Demersal Mobile Gear.

Area 1 South of Salcombe

No access to vessels using demersal mobile gear in the area within the D&S IFCA District outlined by the following points plotted sequentially from Point 1 to Point 32, then returning to Point 1. The landward boundary follows Mean High Water.

Point number	Latitude	Longitude
1	50° 15.900 N	003° 39.100 W
2	50° 16.278 N	003° 34.212 W
3	50° 15.384 N	003° 34.758 W
4	50° 14.502 N	003° 35.298 W
5	50° 13.998 N	003° 35.598 W
6	50° 13.500 N	003° 35.000 W
7	50° 16.400 N	003° 33.300 W
8	50° 19.100 N	003° 32.200 W
9	50° 19.400 N	003° 31.200 W
10	50° 18.250 N	003° 28.800 W
11	50° 15.800 N	003° 30.000 W
12	50° 13.450 N	003° 31.500 W
13	50° 12.600 N	003° 30.400 W
14	50° 09.750 N	003° 32.800 W
15	50° 07.370 N	003° 35.370 W
Then follow the six nautical mile limit to Point 16		
16	50° 08.930 N	003° 56.640 W
17	50° 09.100 N	003° 56.850 W
18	50° 10.284 N	003° 57.696 W
19	50° 10.267 N	003° 58.950 W
20	50° 12.750 N	004° 01.683 W
21	50° 12.750 N	004° 04.600 W
22	50° 12.900 N	004° 07.850 W
23	50° 13.334 N	004° 07.836 W
24	50° 13.352 N	004° 08.043 W
25	50° 13.400 N	004° 08.200 W
26	50° 15.000 N	004° 08.450 W
27	50° 14.460 N	004° 05.958 W
28	50° 14.748 N	004° 03.251 W
29	50° 15.000 N	004° 02.900 W
30	50° 15.000 N	003° 51.650 W
Landward boundary follows mean high water to Point 31		
31	50° 13.099 N	003° 46.849 W
32	50° 13.444 N	003° 46.383 W
Landward boundary follows mean high water to Point 1		

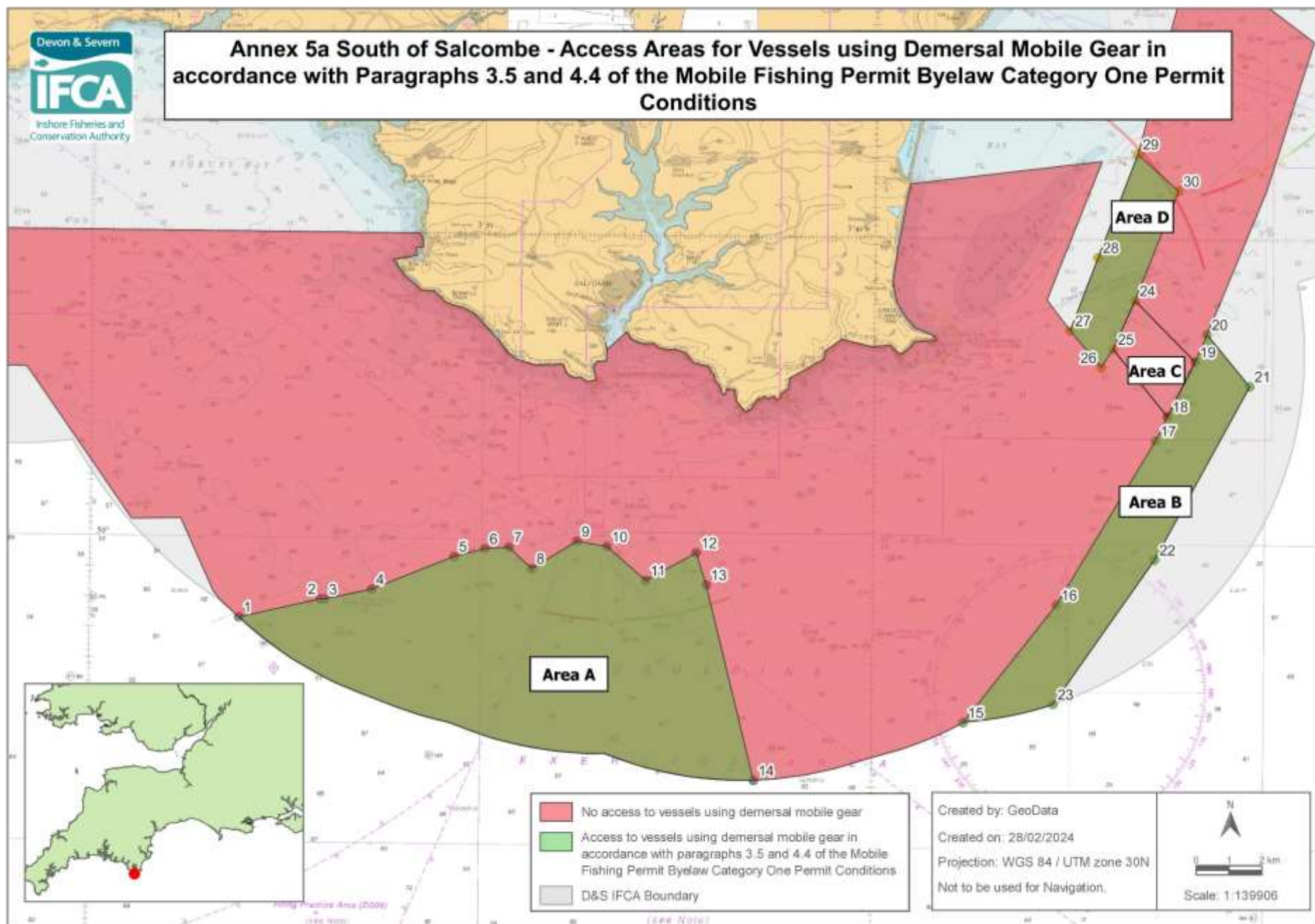
Annex 5 – No Access Area for Vessels using Demersal Mobile Gear.

Area 2 Bigbury Bay

No access to vessels using demersal mobile gear in the area within the D&S IFCA District outlined by the following points plotted sequentially from Point 33 to Point 46, then returning to Point 33.

The landward boundary follows Mean High Water.

Point number	Latitude	Longitude
33	50° 16.800 N	003° 53.332 W
Landward boundary follows mean high water to Point 34		
34	50° 17.750 N	003° 56.657 W
35	50° 18.243 N	003° 57.834 W
Landward boundary follows mean high water to Point 36		
36	50° 18.174 N	004° 04.166 W
37	50° 18.483 N	004° 09.583 W
38	50° 17.600 N	004° 09.717 W
39	50° 16.967 N	004° 03.323 W
40	50° 16.734 N	004° 02.658 W
41	50° 16.678 N	004° 01.685 W
42	50° 16.775 N	004° 01.328 W
43	50° 16.222 N	003° 55.848 W
44	50° 16.158 N	003° 55.749 W
45	50° 16.026 N	003° 54.930 W
46	50° 16.083 N	003° 54.417 W



All Positions are expressed in degrees, decimal minutes (DDM) and shall be measured according to the WGS84 Geographic Co-ordinate System

Version control: Mobile Fishing Permit Byelaw Category 1 (At sea) Annexes

1st March 2024

Annex 5a – Access Areas (A, B, C and D) for Vessels using Demersal Mobile Gear in accordance with Paragraphs 3.5 and 4.4 of the Mobile Fishing Permit Byelaw Category One Permit Conditions.

Area A

Access areas for vessels using demersal mobile gear within the D&S IFCA District outlined by the following points plotted sequentially from Point 1 to Point 14, then returning to Point 1.

Point number	Latitude	Longitude
1	50° 08.670 N	003° 56.180 W
2	50° 08.983 N	003° 54.100 W
3	50° 08.978 N	003° 54.002 W
4	50° 09.150 N	003° 52.800 W
5	50° 09.702 N	003° 50.700 W
6	50° 09.835 N	003° 49.915 W
7	50° 09.863 N	003° 49.300 W
8	50° 09.517 N	003° 48.711 W
9	50° 09.972 N	003° 47.568 W
10	50° 09.892 N	003° 46.798 W
11	50° 09.343 N	003° 45.795 W
12	50° 09.802 N	003° 44.515 W
13	50° 09.278 N	003° 44.254 W
14	50° 06.080 N	003° 42.999 W
Then follow the six nautical mile limit to Point 1		

Area B

Access areas for vessels using demersal mobile gear within the D&S IFCA District outlined by the following points plotted sequentially from Point 15 to Point 23, then returning to Point 15.

Point number	Latitude	Longitude
15	50° 07.060 N	003° 37.660 W
16	50° 09.000 N	003° 35.300 W
17	50° 11.700 N	003° 32.800 W
18	50° 12.100 N	003° 32.500 W
19	50° 13.000 N	003° 31.800 W
20	50° 13.450 N	003° 31.500 W
21	50° 12.600 N	003° 30.400 W
22	50° 09.750 N	003° 32.800 W
23	50° 07.370 N	003° 35.370 W
Then follow the six nautical mile limit to Point 15		

Area C

Access areas for vessels using demersal mobile gear within the D&S IFCA District outlined by the following points plotted sequentially from Point 18 to Point 25, then returning to Point 18.

Point number	Latitude	Longitude
18	50° 12.100 N	003° 32.500 W
19	50° 13.000 N	003° 31.800 W
24	50° 14.000 N	003° 33.350 W
25	50° 13.200 N	003° 33.900 W

Area D

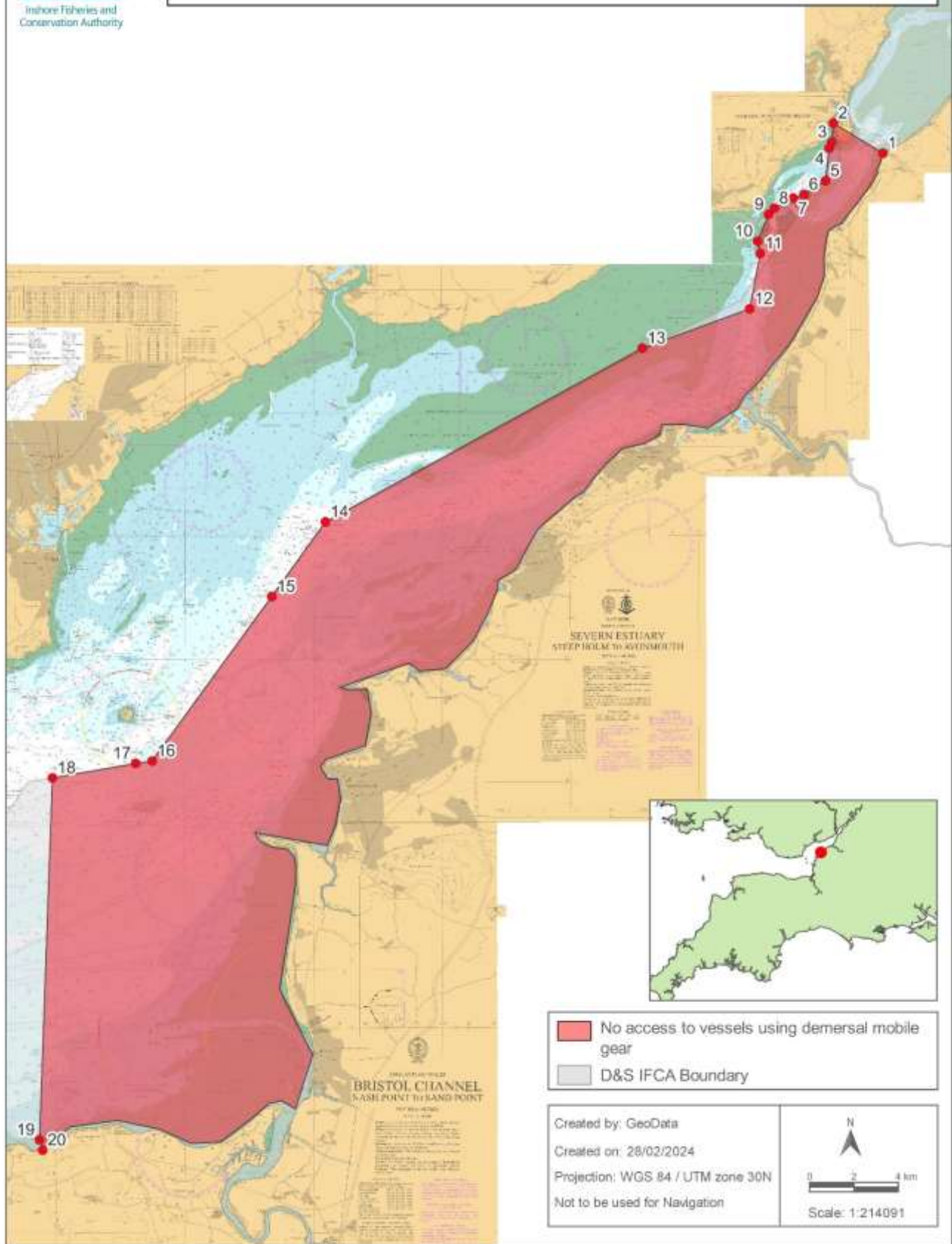
Access areas for vessels using demersal mobile gear within the D&S IFCA District outlined by the following points plotted sequentially from Point 24 to Point 30, then returning to Point 24.

Point number	Latitude	Longitude
24	50° 14.000 N	003° 33.350 W
25	50° 13.200 N	003° 33.900 W
26	50° 12.900 N	003° 34.200 W
27	50° 13.500 N	003° 35.000 W
28	50° 14.700 N	003° 34.300 W
29	50° 16.400 N	003° 33.300 W
30	50° 15.800 N	003° 32.250 W

Permit Condition 4.4 Table 1

Annex	Sub Area of Annex 5a	Annual Access dates
5a	Area A	1 st Jan to 31 st May inclusive
5a	Area B	1 st Jan to 31 st March inclusive
5a	Area C	NO ACCESS
5a	Area D	1 st Feb to 31 st Aug inclusive

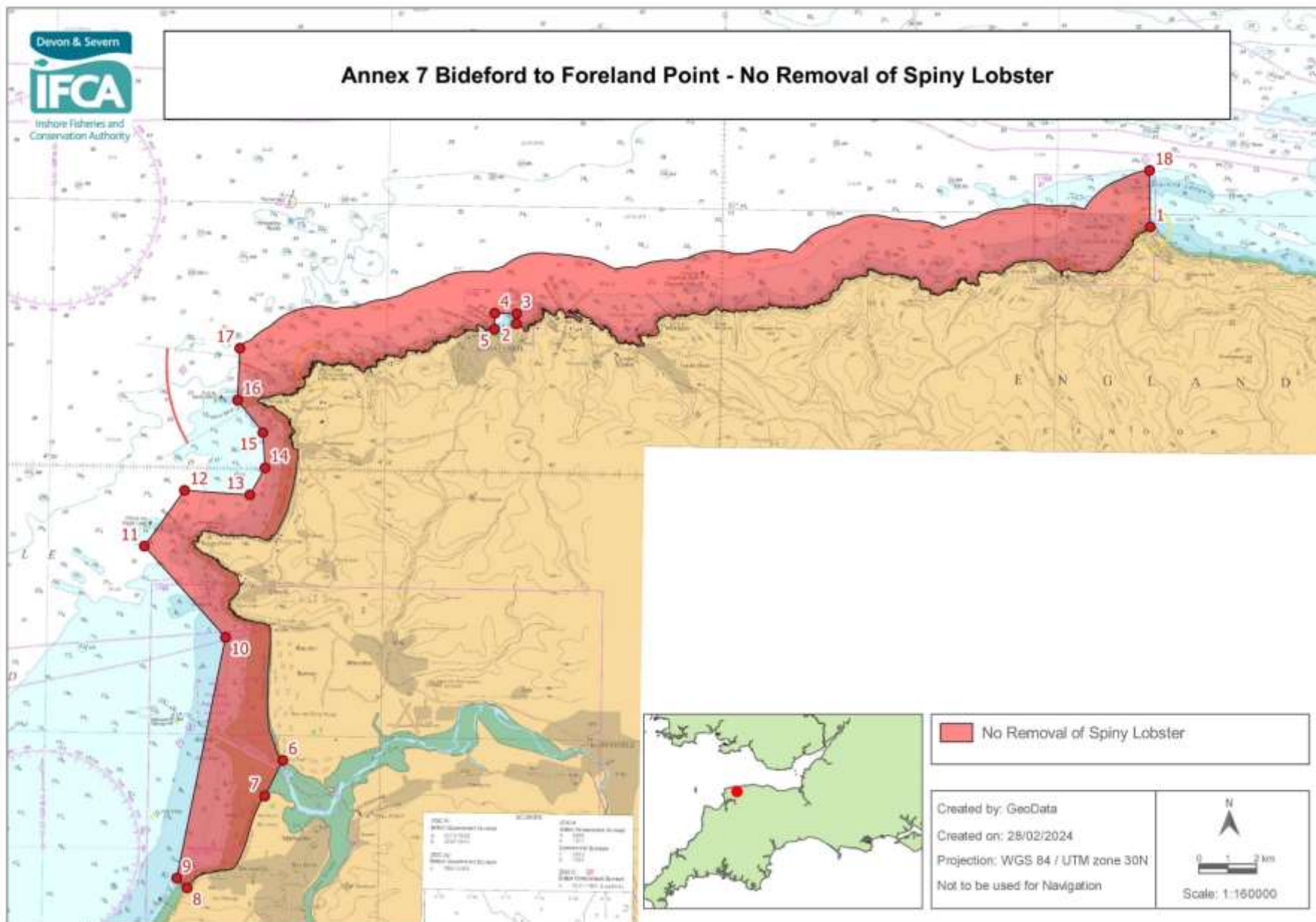
Annex 6 Severn Estuary - No Access to Vessels using Demersal Mobile Gear



Annex 6 Severn Estuary – No Access For Vessels using Demersal Mobile Gear.

No access to vessels using demersal mobile gear in the area within the D&S IFCA District outlined by the following points plotted sequentially from Point 1 to Point 20, then returning to Point 1. The landward boundary follows Mean High Water.

Point number	Latitude	Longitude
1	51° 36.314 N	002° 37.707 W
2	51° 37.054 N	002° 39.646 W
3	51° 36.591 N	002° 39.711 W
4	51° 36.440 N	002° 39.814 W
5	51° 35.648 N	002° 39.963 W
6	51° 35.317 N	002° 40.803 W
7	51° 35.227 N	002° 41.227 W
8	51° 34.982 N	002° 41.972 W
9	51° 34.832 N	002° 42.202 W
10	51° 34.180 N	002° 42.630 W
11	51° 33.880 N	002° 42.530 W
12	51° 32.530 N	002° 42.950 W
13	51° 31.580 N	002° 47.150 W
14	51° 27.350 N	002° 59.540 W
15	51° 25.530 N	003° 01.630 W
16	51° 21.510 N	003° 06.290 W
17	51° 21.450 N	003° 06.930 W
18	51° 21.093 N	003° 10.173 W
19	51° 12.256 N	003° 10.641 W
20	51° 12.005 N	003° 10.515 W
Landward boundary follows mean high water to Point 1		



All Positions are expressed in degrees, decimal minutes (DDM) and shall be measured according to the WGS84 Geographic Co-ordinate System

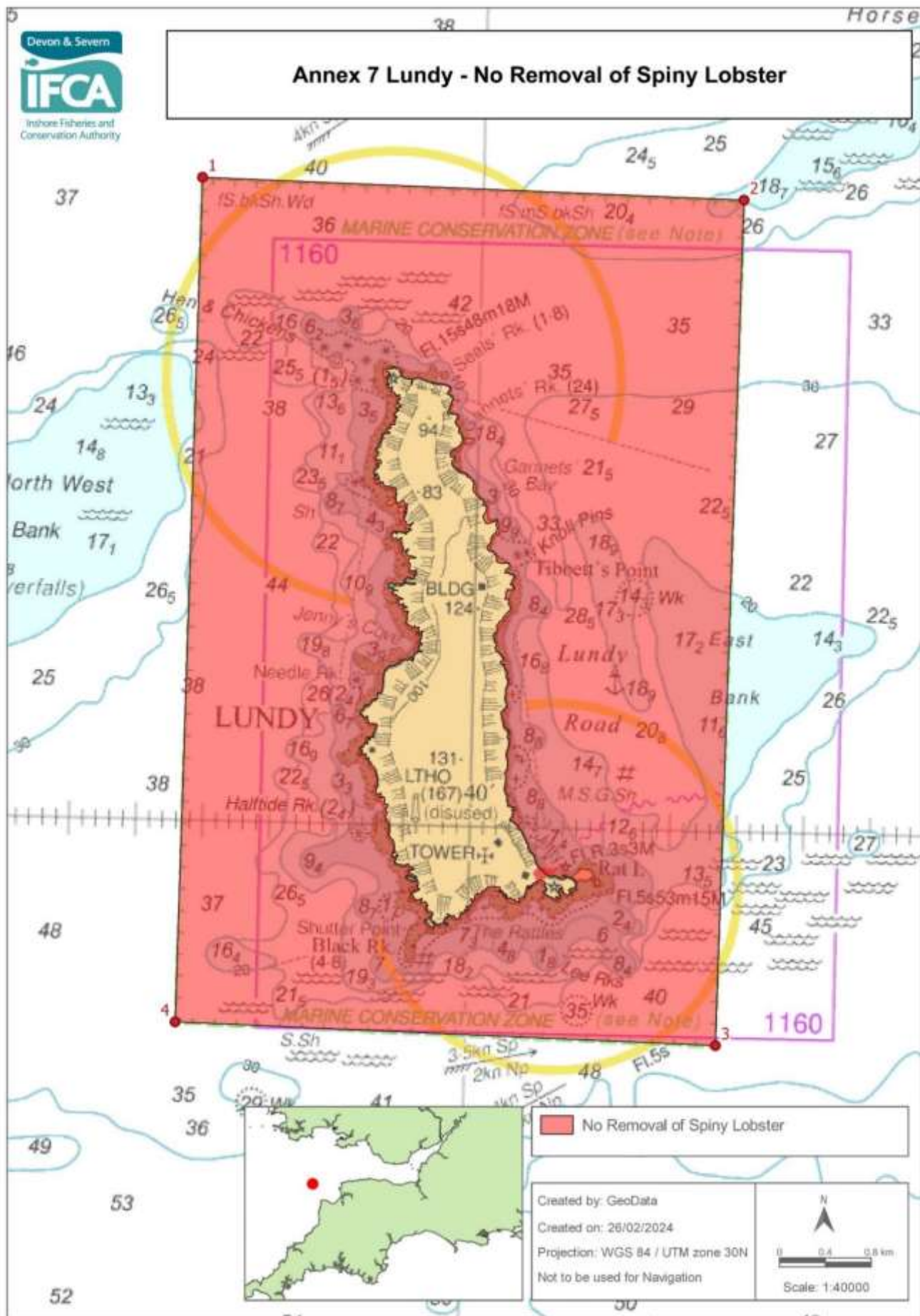
Version control: Mobile Fishing Permit Byelaw Category 1 (At sea) Annexes

1st March 2024

Annex 7 Bideford to Foreland Point – No Removal of Spiny Lobster.

No removal of spiny lobster in the area within the D&S IFCA District outlined by the following points plotted sequentially from Point 1 to Point 18, then returning to Point 1. The landward boundary follows Mean High Water.

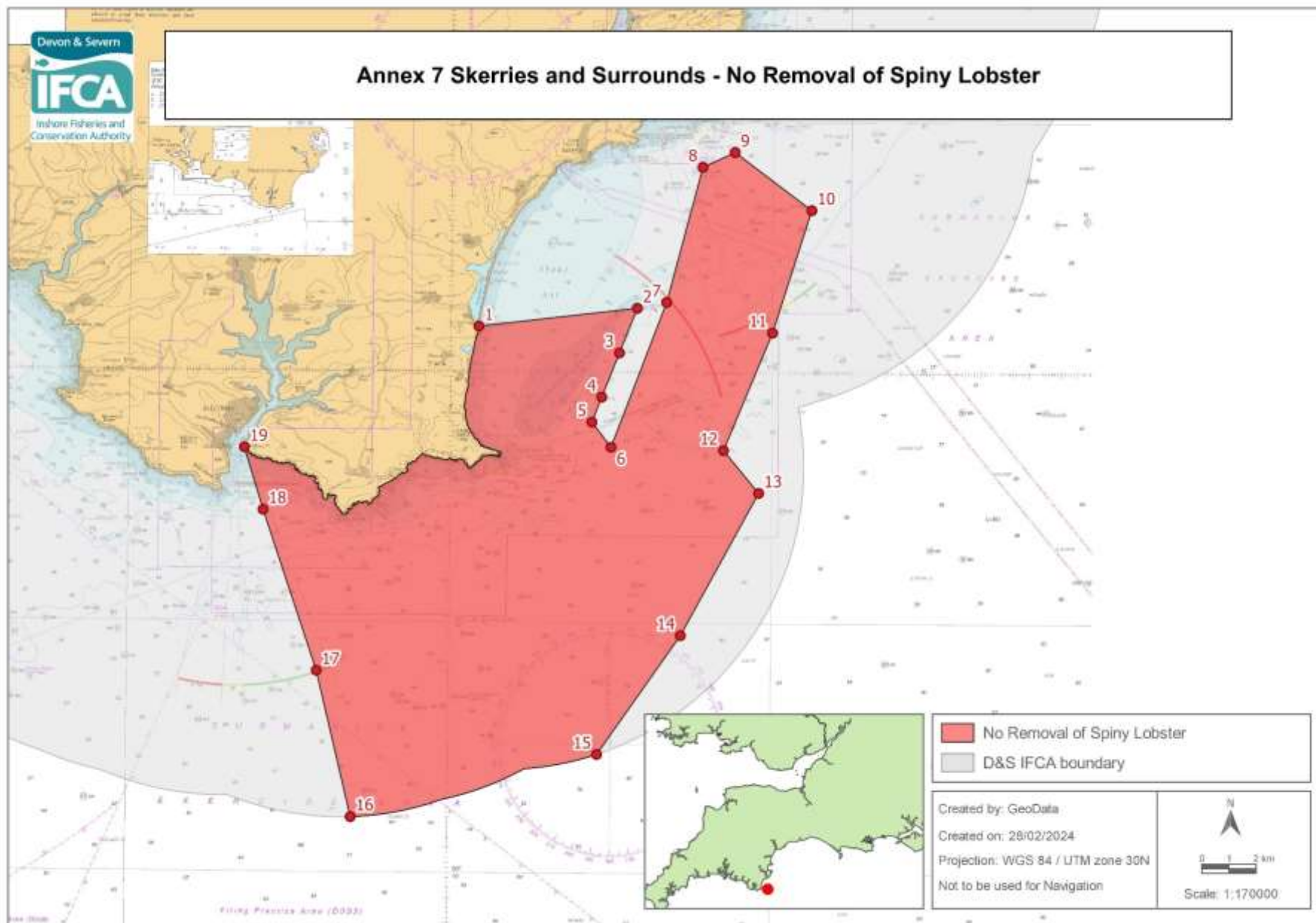
Point number	Latitude	Longitude
1	51° 14.764 N	003° 47.203 W
Landward boundary follows mean high water to Point 2		
2	51° 12.792 N	004° 06.128 W
3	51° 12.980 N	004° 06.125 W
4	51° 12.983 N	004° 06.777 W
5	51° 12.683 N	004° 06.777 W
Landward boundary follows mean high water to Point 6		
6	51° 04.525 N	004° 12.923 W
7	51° 03.902 N	004° 13.150 W
Landward boundary follows mean high water to Point 8		
8	51° 02.098 N	004° 15.684 W
9	51° 02.281 N	004° 15.999 W
10	51° 06.816 N	004° 14.666 W
11	51° 08.505 N	004° 17.134 W
12	51° 09.563 N	004° 15.965 W
13	51° 09.500 N	004° 14.013 W
14	51° 10.011 N	004° 13.569 W
15	51° 10.677 N	004° 13.653 W
16	51° 11.274 N	004° 14.425 W
17	51° 12.250 N	004° 14.384 W
Seaward boundary follows a one nautical mile line from mean high water to Point 18		
18	51° 15.825 N	003° 47.243 W



Annex 7 Lundy – No Removal of Spiny Lobster.

No removal of spiny lobster in the area within the D&S IFCA District outlined by the following points plotted sequentially from Point 1 to Point 4, then returning to Point 1.

Point number	Latitude	Longitude
1	51° 13.022 N	004° 42.113W
2	51° 12.972 N	004° 38.049 W
3	51° 08.986 N	004° 38.123 W
4	51° 09 040 N	004° 42.172 W



All Positions are expressed in degrees, decimal minutes (DDM) and shall be measured according to the WGS84 Geographic Co-ordinate System

Version control: Mobile Fishing Permit Byelaw Category 1 (At sea) Annexes

1st March 2024

Annex 7 Skerries and Surrounds – No Removal of Spiny Lobster

No removal of spiny lobster in the area within the D&S IFCA District outlined by the following points plotted sequentially from Point 1 to Point 20, then returning to Point 1. The landward boundary follows Mean High Water.

Point number	Latitude	Longitude
1	50° 15.900 N	003° 39.100 W
2	50° 16.278 N	003° 34.212 W
3	50° 15.384 N	003° 34.758 W
4	50° 14.502 N	003° 35.298 W
5	50° 13.998 N	003° 35.598 W
6	50° 13.500 N	003° 35.000 W
7	50° 16.400 N	003° 33.300 W
8	50° 19.100 N	003° 32.200 W
9	50° 19.400 N	003° 31.200 W
10	50° 18.250 N	003° 28.800 W
11	50° 15.800 N	003° 30.000 W
12	50° 13.450 N	003° 31.500 W
13	50° 12.600 N	003° 30.400 W
14	50° 09.750 N	003° 32.800 W
15	50° 07.370 N	003° 35.370 W
Then follow the six nautical mile limit to Point 16		
16	50° 06.100 N	003° 43.000 W
17	50° 09.041 N	003° 44.183 W
18	50° 10.942 N	003° 45.079 W
19	50° 12.243 N	003° 45.876 W
20	50° 13.418 N	003° 46.374 W
Landward boundary follows mean high water to Point 1		

Annex 8

Areas where IVMS Transmission is not required in accordance with Paragraph 2.5 (b) of the Mobile Fishing Permit Byelaw Category One Permit Conditions.

Brixham – Landward of the boundary line between Points:

A) 50°24.210 N - 003° 31.200 W

B) 50°24.340 N - 003° 30.780 W

Torquay - Landward of the boundary line between Points:

A) 50° 27.450 N - 003° 31.750 W

B) 50° 27.420 N - 003° 31.720 W

Teignmouth- Landward of the boundary line between Points:

A) 50° 32.270 N - 003° 29.730 W Ness

B) 50° 32.500 N - 003° 29.770 W Southern leading light

Exmouth - Landward of the boundary line between Points:

A) 50° 35.518 N - 003° 26.629 W Langstone Point

B) 50° 36.421 N - 003° 23.108 W Orcombe Point

Axmouth - Landward of the boundary line between Points:

A) 50° 42.135 N - 003° 03.354 W

B) 50° 42.135 N - 003° 03.274 W

Dartmouth – Landward of the boundary line between Points:

A) 50° 19.634 N - 003° 34.266 W Coombe Point

B) 50° 20.141 N - 003° 32.583 W Inner Froward Point

Salcombe – Landward of the boundary line between Points:

A) 50° 13.444 N - 003° 46.915 W Splatcove Point

B) 50° 13.444 N - 003° 46.402 W Limebury Point

Yealm – Landward of the boundary line between Points:

A) 50° 18.749 N - 004° 04.139 W Season Point

B) 50° 18.560 N - 004° 04.268 W Mouth Stone

Sutton Harbour – Landward of the boundary line between Points:

A) 50° 21.580 N - 004° 09.820 W

B) 50° 21.850 N - 004° 07.490 W

Tamar – Landward of the boundary line between Points:

A) 50° 21.760 N - 004° 10.120 W

B) 50° 21.580 N - 004° 10.040 W

Annex 8 (continued)

Areas where IVMS Transmission is not required in accordance with Paragraph 2.5 (b) of the Mobile Fishing Permit Byelaw Category One Permit Conditions.

Taw Torridge – Landward of the boundary line between Points:

A) 51° 02.620 N - 004° 14.270 W

B) 51° 07.040 N - 004° 13.470 W

Ilfracombe – Landward of the boundary line between Points:

A) 51° 12.640 N - 004° 06.680 W

B) 51° 12.580 N - 004° 06.500 W

Watchet – Landward of the boundary line between Points:

A) 51° 11.040 N - 003° 19.750 W

B) 51° 11.000 N - 003° 19.680 W