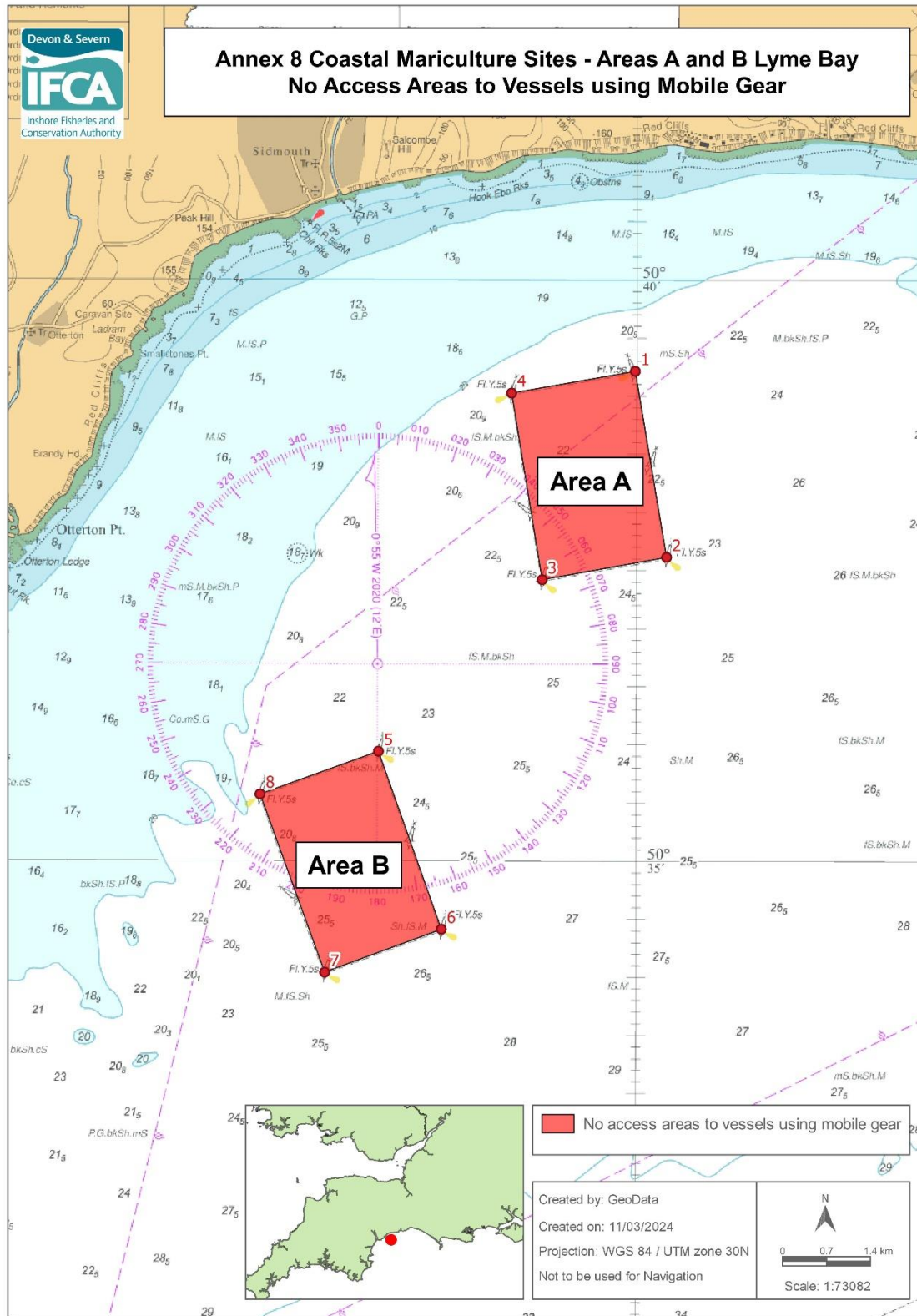


Annex 1 – Protection of Specified Coastal Mariculture Sites

Areas A, B and C are set out in the new Mobile Fishing (at Sea) Permit Condition Annex 8 for specified coastal mariculture sites, where the recommendation is to prohibit the use of mobile gear. The areas are shown in the charts below.



Annex 8 Coastal Mariculture Sites - No Access Areas to Vessels using Mobile Gear

Area A

No access area to vessels using mobile gear within the D&S IFCA District outlined by the following points plotted sequentially from Point 1 to Point 4, then returning to Point 1.

Point number	Latitude	Longitude
1	50° 39.200 N	003° 10.028 W
2	50° 37.600 N	003° 09.600 W
3	50° 37.405 N	003° 11.281 W
4	50° 39.010 N	003° 11.700 W

Area B

No access area to vessels using mobile gear within the D&S IFCA District outlined by the following points plotted sequentially from Point 5 to Point 8, then returning to Point 5.

Point number	Latitude	Longitude
5	50° 35.927 N	003° 13.488 W
6	50° 34.397 N	003° 12.632 W
7	50° 34.025 N	003° 14.205 W
8	50° 35.556 N	003° 15.086 W

Annex 8 Coastal Mariculture Sites - No Access Areas to Vessels using Mobile Gear

Area C

No access area to vessels using mobile gear within the D&S IFCA District outlined by the following points plotted sequentially from Point 9 to Point 12, then returning to point 9.

Point number	Latitude	Longitude
9	50° 26.865 N	003° 29.080 W
10	50° 26.615 N	003° 29.080 W
11	50° 26.615 N	003° 29.780 W
12	50° 26.865 N	003° 29.780 W