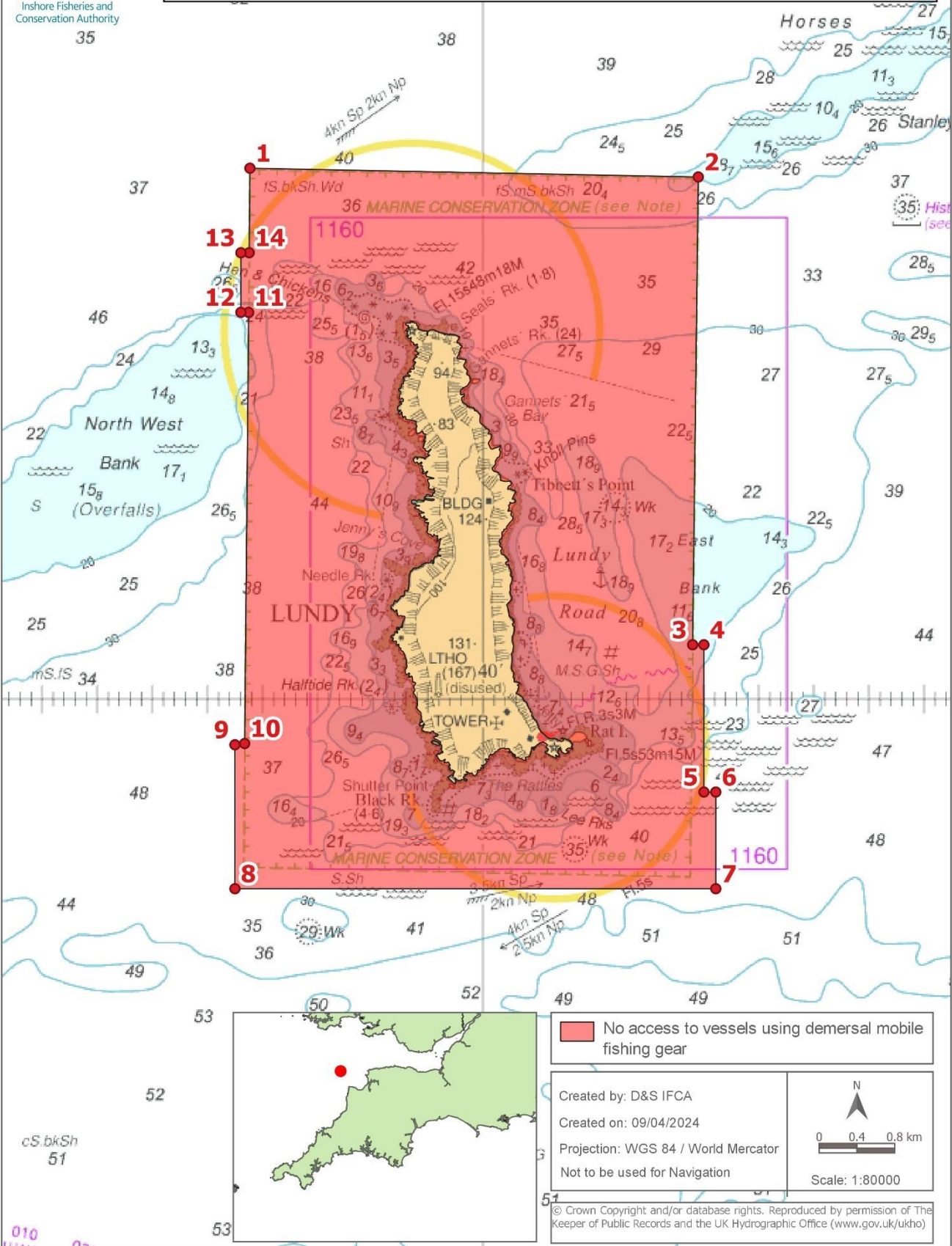


## Annex 1 Lundy - No Access to Vessels using Demersal Mobile Fishing Gear

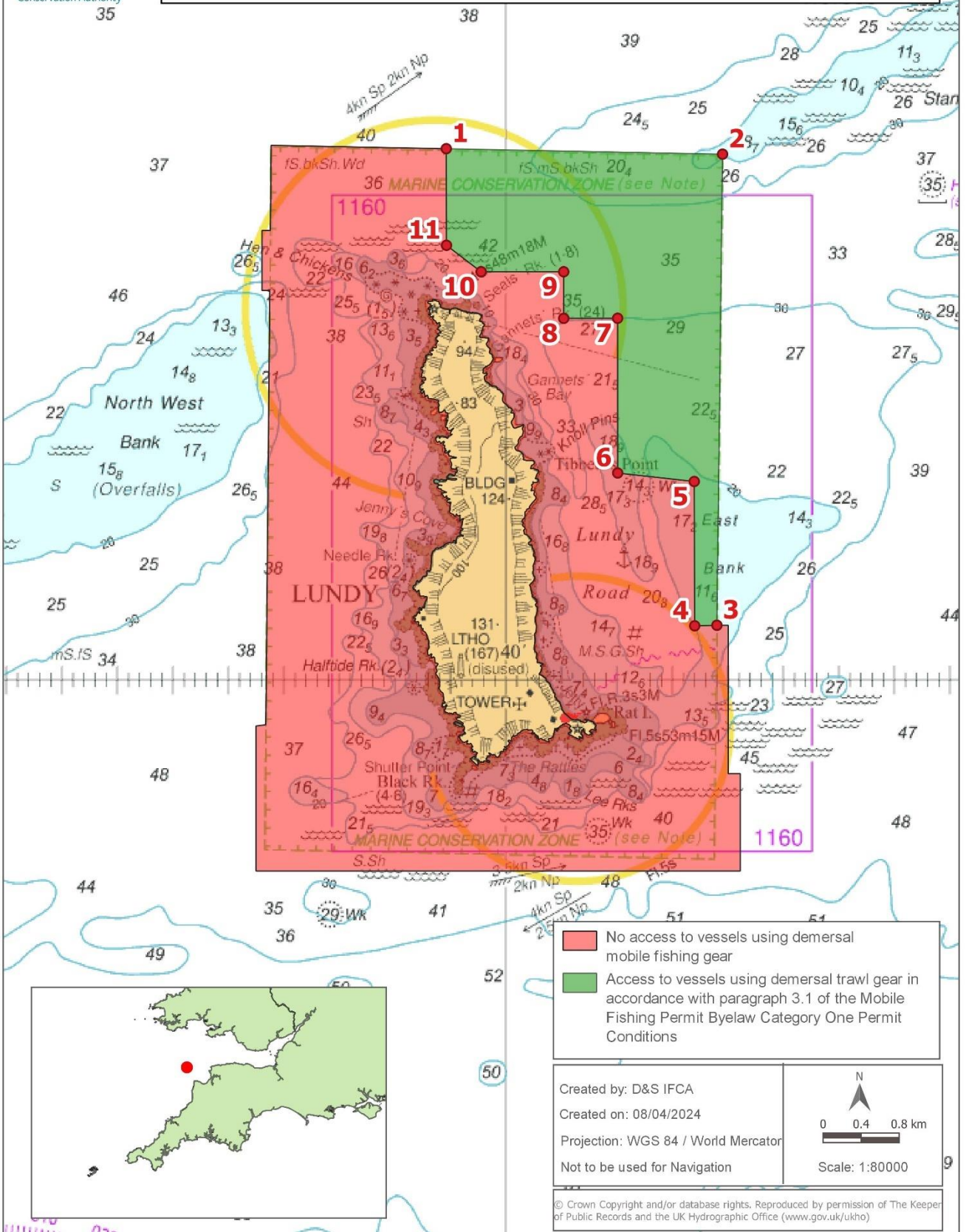


## Annex 1 Lundy – No Access Area for Vessels using Demersal Mobile Fishing Gear.

No access to vessels using demersal mobile fishing gear in the area within the D&S IFCA District outlined by the following points plotted sequentially from Point 1 to Point 14, then returning to Point 1. The landward boundary follows Mean High Water.

Point Number	Latitude	Longitude
1	51° 13.022 N	004° 42.116 W
2	51° 12.972 N	004° 38.049 W
3	51° 10.303 N	004° 38.100 W
4	51° 10.303 N	004° 37.998 W
5	51° 09.462 N	004° 37.998 W
6	51° 09.462 N	004° 37.890 W
7	51° 08.910 N	004° 37.890 W
8	51° 08.910 N	004° 42.252 W
9	51° 09.732 N	004° 42.252 W
10	51° 09.739 N	004° 42.164 W
11	51° 12.200 N	004° 42.128 W
12	51° 12.200 N	004° 42.198 W
13	51° 12.540 N	004° 42.198 W
14	51° 12.540 N	004° 42.123 W

**Annex 1a Lundy - Access Area for Vessels using Demersal Trawl  
 Gear in accordance with Paragraph 3.1 of the Mobile Fishing Permit  
 Byelaw Category One Permit Conditions**

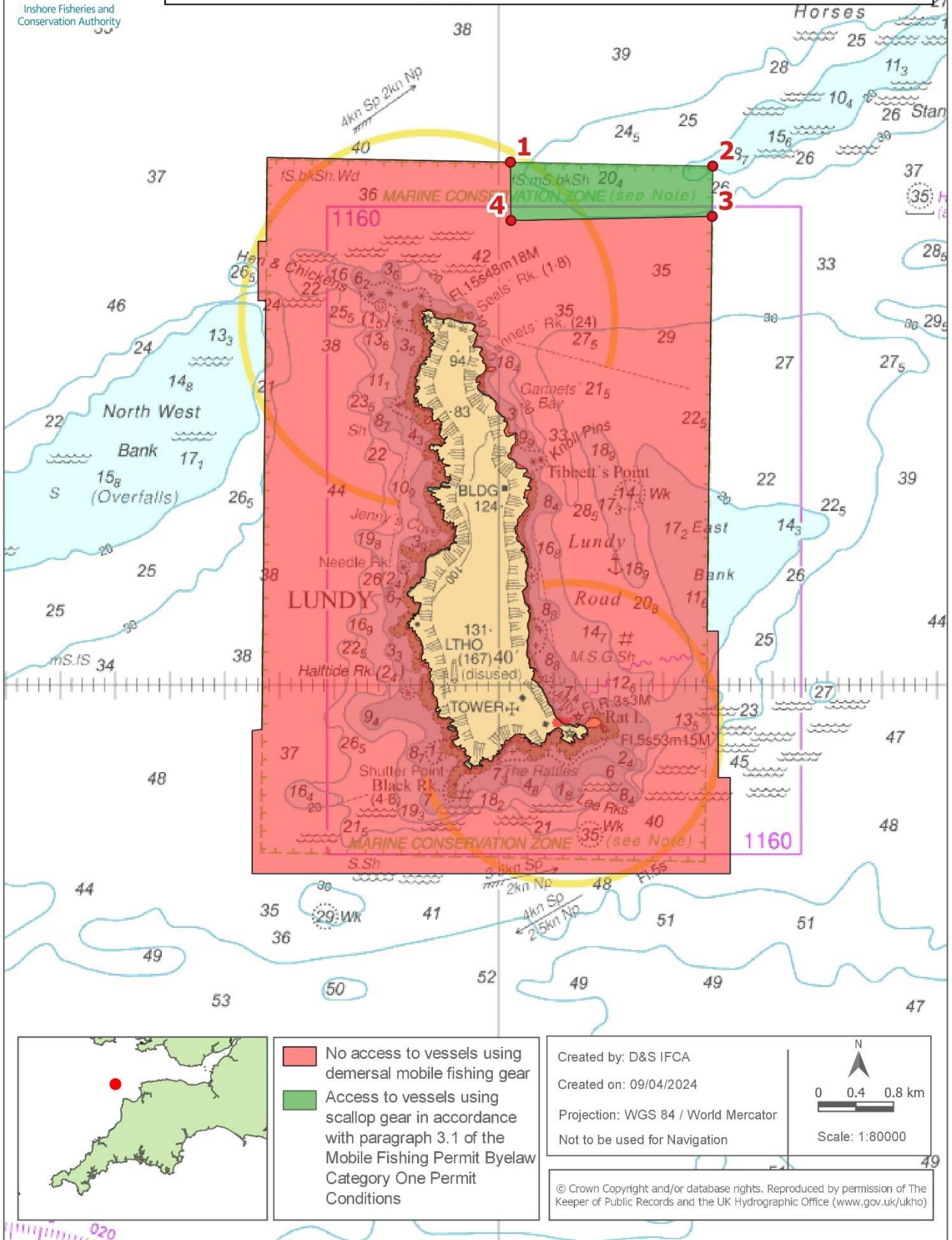


**Annex 1a Lundy – Access Area for Vessels using Demersal Trawl Gear in accordance with Paragraph 3.1 of the Mobile Fishing Permit Byelaw Category One Permit Conditions.**

**Access area for vessels using demersal trawl gear within the D&S IFCA District outlined by the following points plotted sequentially from Point 1 to Point 11, then returning to Point 1.**

<b>Point Number</b>	<b>Latitude</b>	<b>Longitude</b>
1	51° 13.003 N	004° 40.538 W
2	51° 12.972 N	004° 38.049 W
3	51° 10.303 N	004° 38.100 W
4	51° 10.300 N	004° 38.300 W
5	51° 11.118 N	004° 38.304 W
6	51° 11.166 N	004° 38.994 W
7	51° 12.043 N	004° 38.994 W
8	51° 12.042 N	004° 39.480 W
9	51° 12.306 N	004° 39.480 W
10	51° 12.306 N	004° 40.224 W
11	51° 12.456 N	004° 40.536 W

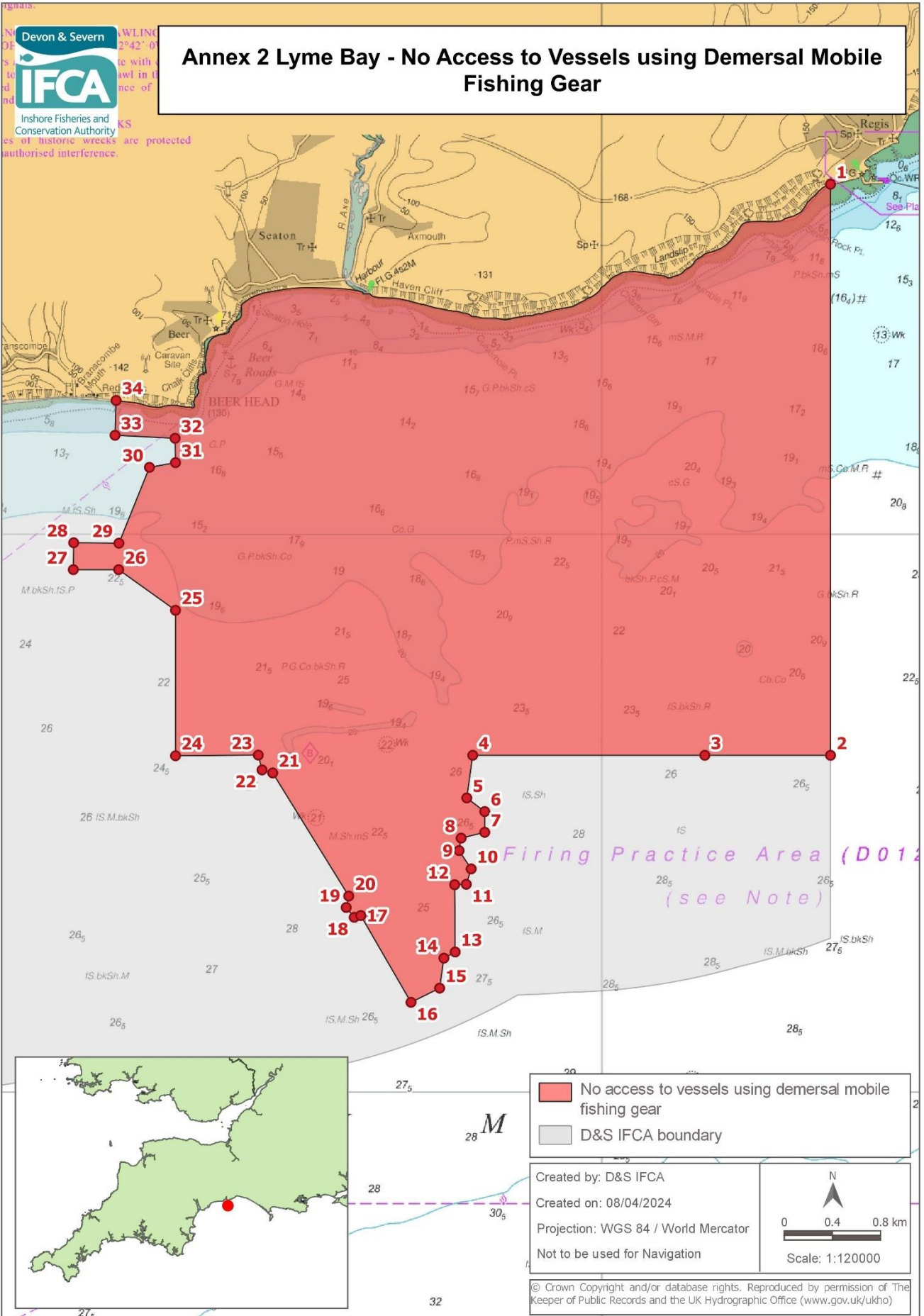
**Annex 1b Lundy - Access Area for Vessels using Scallop Gear in accordance with Paragraph 3.1 of the Mobile Fishing Permit Byelaw Category One Permit Conditions**



**Annex 1b Lundy – Access Area for Vessels using Scallop Gear in accordance with Paragraph 3.1 of the Mobile Fishing Permit Byelaw Category One Permit Conditions.**

**Access area for vessels using scallop gear within the D&S IFCA District outlined by the following points plotted sequentially from Point 1 to Point 4, then returning to Point 1.**

<b>Point number</b>	<b>Latitude</b>	<b>Longitude</b>
1	51° 12.995 N	004° 38.895 W
2	51° 12.972 N	004° 38.049 W
3	51° 12.684 N	004° 38.054 W
4	51° 12.660 N	004° 39.890 W



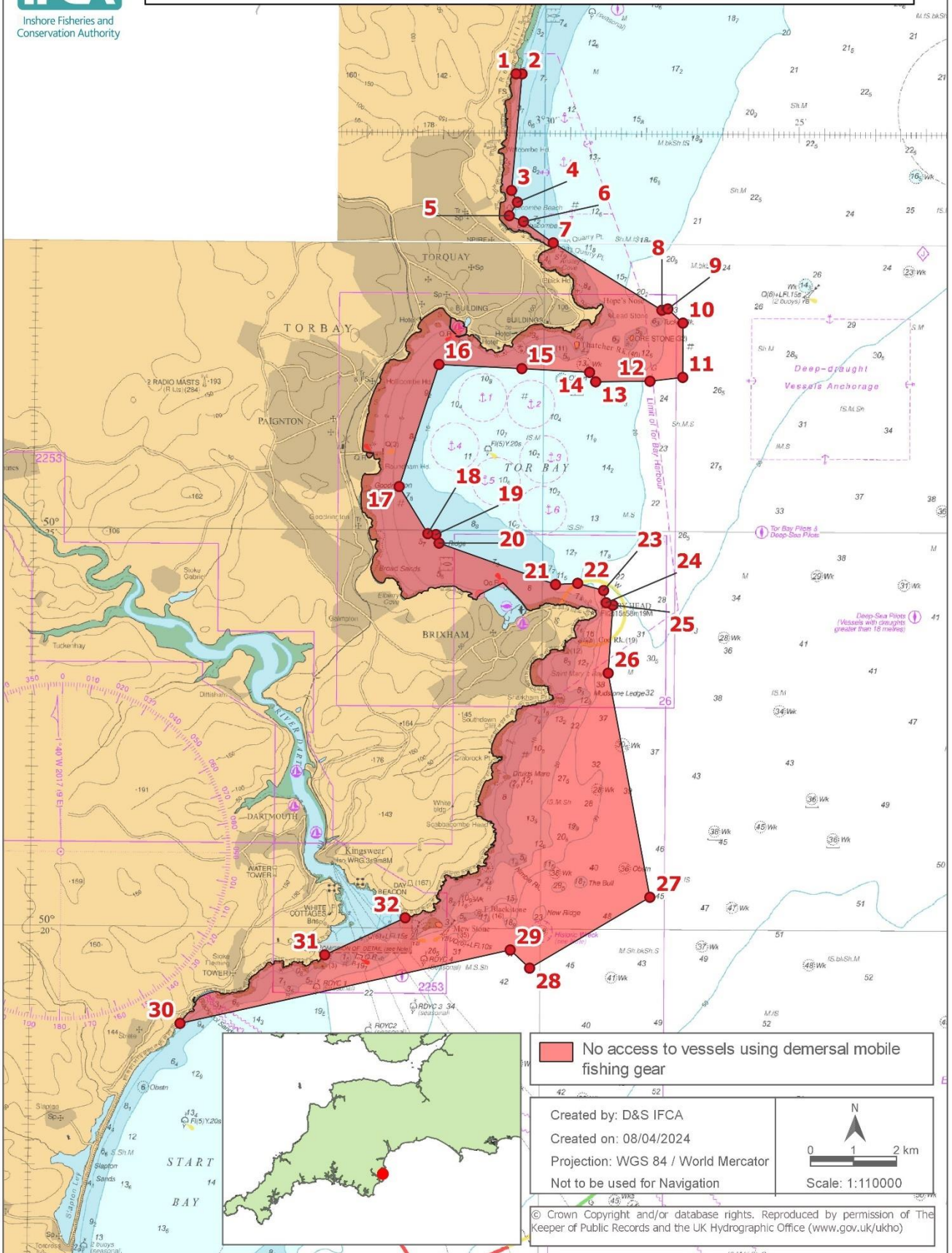
**Annex 2 Lyme Bay – No Access Area to Vessels using Demersal Mobile Fishing Gear.**

**No access to vessels using demersal mobile fishing gear in the area within the D&S IFCA District outlined by the following points plotted sequentially from Point 1 to Point 34, then returning to Point 1. The landward boundary follows Mean High Water.**

<b>Point Number</b>	<b>Latitude</b>	<b>Longitude</b>
1	50° 43.116 N	002° 56.782 W
2	50° 38.004 N	002° 56.782 W
3	50° 38.004 N	002° 58.551 W
4	50° 38.004 N	003° 01.817 W
5	50° 37.622 N	003° 01.901 W
6	50° 37.500 N	003° 01.648 W
7	50° 37.314 N	003° 01.648 W
8	50° 37.262 N	003° 01.980 W
9	50° 37.150 N	003° 02.009 W
10	50° 36.986 N	003° 01.839 W
11	50° 36.848 N	003° 01.908 W
12	50° 36.844 N	003° 02.071 W
13	50° 36.241 N	003° 02.064 W
14	50° 36.186 N	003° 02.223 W
15	50° 35.917 N	003° 02.283 W
16	50° 35.790 N	003° 02.686 W
17	50° 36.568 N	003° 03.393 W
18	50° 36.552 N	003° 03.485 W
19	50° 36.640 N	003° 03.598 W
20	50° 36.743 N	003° 03.562 W
21	50° 37.846 N	003° 04.632 W
22	50° 37.873 N	003° 04.782 W
23	50° 38.006 N	003° 04.835 W
24	50° 38.000 N	003° 06.000 W
25	50° 39.303 N	003° 06.000 W
26	50° 39.667 N	003° 06.800 W
27	50° 39.667 N	003° 07.438 W
28	50° 39.908 N	003° 07.433 W
29	50° 39.904 N	003° 06.796 W
30	50° 40.583 N	003° 06.367 W
31	50° 40.625 N	003° 06.000 W
32	50° 40.843 N	003° 06.006 W
33	50° 40.870 N	003° 06.851 W
34	50° 41.182 N	003° 06.836 W
Landward boundary follows Mean High Water to Point 1		

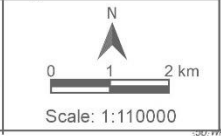


## Annex 3 Tor Bay - No Access to Vessels using Demersal Mobile Fishing Gear



■ No access to vessels using demersal mobile fishing gear

Created by: D&S IFCA  
 Created on: 08/04/2024  
 Projection: WGS 84 / World Mercator  
 Not to be used for Navigation



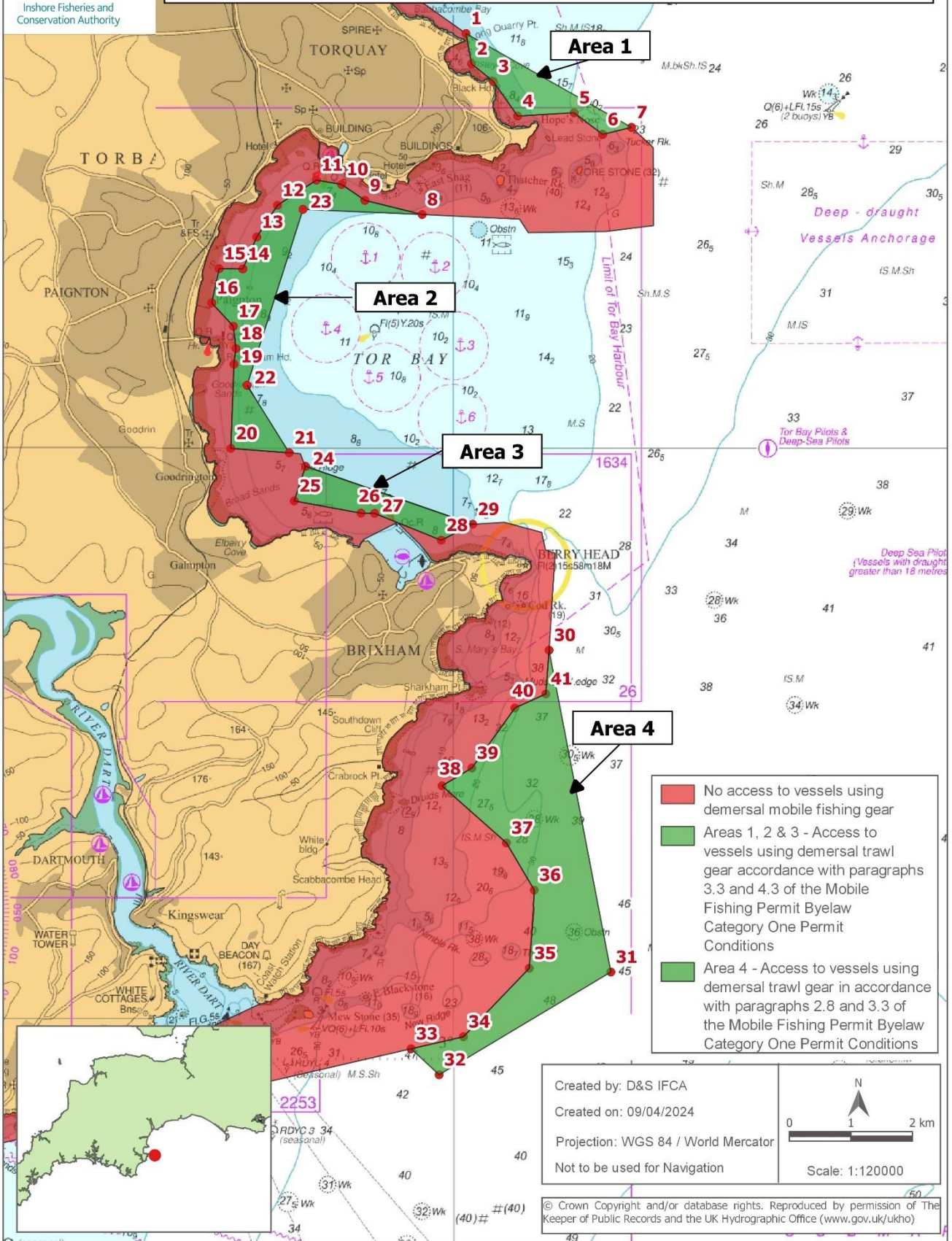
© Crown Copyright and/or database rights. Reproduced by permission of The Keeper of Public Records and the UK Hydrographic Office ([www.gov.uk/ukho](http://www.gov.uk/ukho))

**Annex 3 Tor Bay – No Access Area for Vessels using Demersal Mobile Fishing Gear.**

**No access to vessels using demersal mobile fishing gear in the area within the D&S IFCA District outlined by the following points plotted sequentially from Point 1 to Point 32, then returning to Point 1. The landward boundary follows Mean High Water.**

<b>Point Number</b>	<b>Latitude</b>	<b>Longitude</b>
1	50° 30.733 N	003° 30.585 W
2	50° 30.733 N	003° 30.467 W
3	50° 29.267 N	003° 30.659 W
4	50° 29.120 N	003° 30.541 W
5	50° 28.950 N	003° 30.700 W
6	50° 28.878 N	003° 30.420 W
7	50° 28.612 N	003° 29.832 W
8	50° 27.775 N	003° 27.685 W
9	50° 27.792 N	003° 27.568 W
10	50° 27.615 N	003° 27.270 W
11	50° 26.933 N	003° 27.267 W
12	50° 26.882 N	003° 27.911 W
13	50° 26.871 N	003° 28.979 W
14	50° 26.989 N	003° 29.100 W
15	50° 27.030 N	003° 30.432 W
16	50° 27.075 N	003° 32.062 W
17	50° 25.538 N	003° 32.827 W
18	50° 24.949 N	003° 32.258 W
19	50° 24.938 N	003° 32.098 W
20	50° 24.831 N	003° 32.035 W
21	50° 24.321 N	003° 29.741 W
22	50° 24.338 N	003° 29.307 W
23	50° 24.250 N	003° 28.796 W
24	50° 24.096 N	003° 28.745 W
25	50° 24.067 N	003° 28.613 W
26	50° 23.212 N	003° 28.696 W
27	50° 20.400 N	003° 27.850 W
28	50° 19.500 N	003° 30.200 W
29	50° 19.727 N	003° 30.583 W
30	50° 18.774 N	003° 37.047 W
Landward boundary follows Mean High Water to Point 31		
31	50° 19.648 N	003° 34.220 W
32	50° 20.121 N	003° 32.648 W
Landward Boundary follows Mean High Water to Point 1		

**Annex 3a Tor Bay - Access Areas for Vessels using Demersal Trawl Gear in accordance with Paragraphs 2.8, 3.3 and 4.3 of the Mobile Fishing Permit Byelaw Category One Permit Conditions**



**Annex 3a Tor Bay – Access Areas (1, 2, 3 and 4) for Vessels using Demersal Trawl Gear in accordance with Paragraphs 2.8, 3.3 and 4.3 of the Mobile Fishing Permit Byelaw Category One Permit Conditions.**

**Area 1**

**Access areas for demersal trawl gear within the D&S IFCA District outlined by the following points plotted sequentially from Point 1 to Point 7, then returning to Point 1.**

<b>Point Number</b>	<b>Latitude</b>	<b>Longitude</b>
1	50° 28.612 N	003° 29.832 W
2	50° 28.347 N	003° 29.755 W
3	50° 28.194 N	003° 29.459 W
4	50° 27.891 N	003° 29.125 W
5	50° 27.920 N	003° 28.353 W
6	50° 27.731 N	003° 27.963 W
7	50° 27.792 N	003° 27.568 W

**Area 2**

**Access areas for demersal trawl gear within the D&S IFCA District outlined by the following points plotted sequentially from Point 8 to Point 23, then returning to Point 8.**

<b>Point number</b>	<b>Latitude</b>	<b>Longitude</b>
8	50° 27.030 N	003° 30.432 W
9	50° 27.154 N	003° 31.214 W
10	50° 27.293 N	003° 31.533 W
11	50° 27.331 N	003° 31.878 W
12	50° 27.111 N	003° 32.411 W
13	50° 26.833 N	003° 32.695 W
14	50° 26.554 N	003° 32.886 W
15	50° 26.557 N	003° 33.210 W
16	50° 26.257 N	003° 33.311 W
17	50° 26.053 N	003° 33.015 W
18	50° 25.858 N	003° 32.980 W
19	50° 25.721 N	003° 33.007 W
20	50° 24.984 N	003° 33.050 W
21	50° 24.946 N	003° 32.250 W
22	50° 25.537 N	003° 32.827 W
23	50° 27.075 N	003° 32.062 W

### Area 3

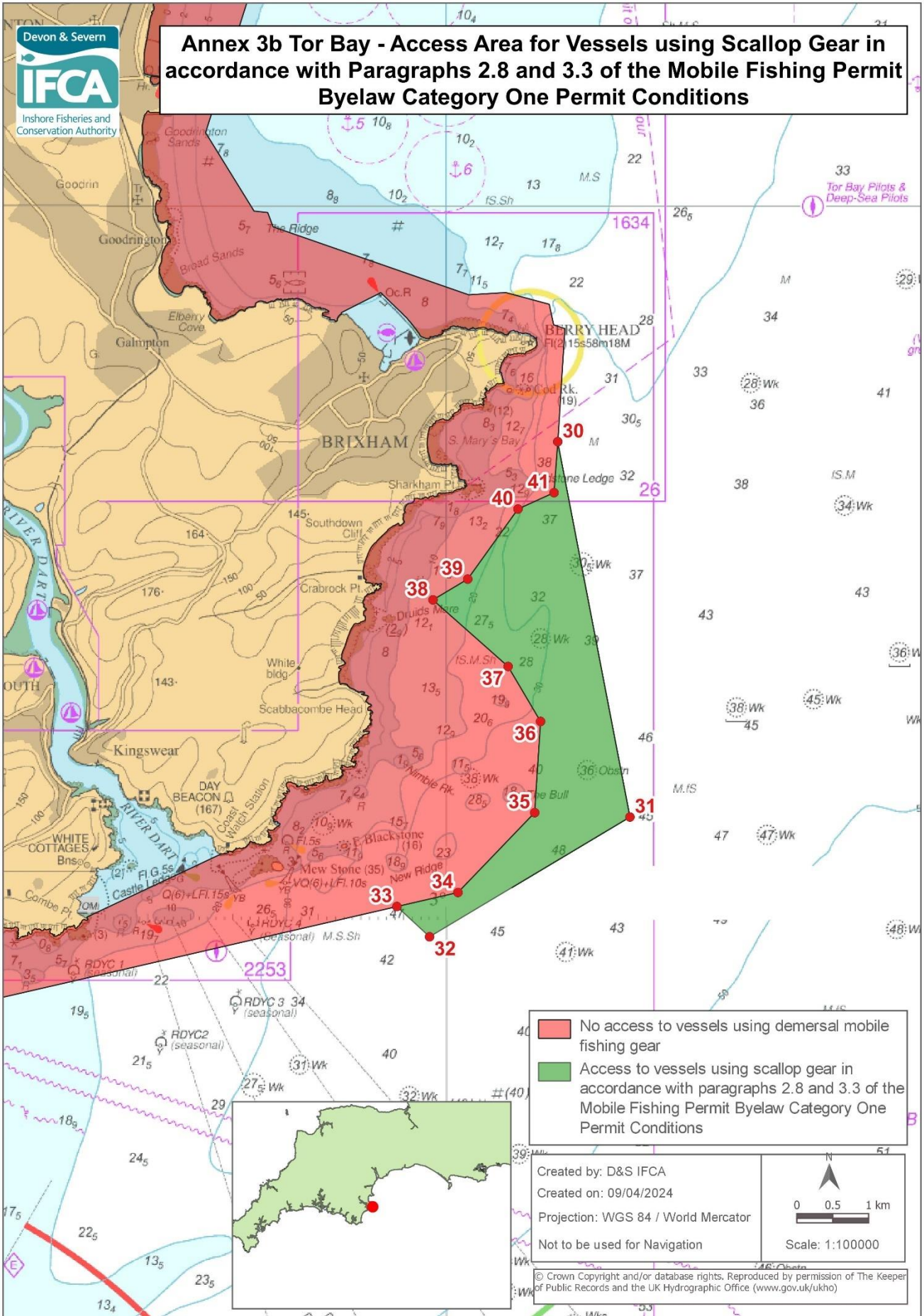
Access areas for demersal trawl gear within the D&S IFCA District outlined by the following points plotted sequentially from Point 24 to Point 29, then returning to Point 24

Point number	Latitude	Longitude
24	50° 24.828 N	003° 32.027 W
25	50° 24.525 N	003° 32.183 W
26	50° 24.418 N	003° 31.268 W
27	50° 24.416 N	003° 31.082 W
28	50° 24.181 N	003° 30.171 W
29	50° 24.321 N	003° 29.741 W

### Area 4

Access areas for demersal trawl gear within the D&S IFCA District outlined by the following points plotted sequentially from Point 30 to Point 41, then returning to Point 30.

Point number	Latitude	Longitude
30	50° 23.212 N	003° 28.696 W
31	50° 20.400 N	003° 27.850 W
32	50° 19.500 N	003° 30.200 W
33	50° 19.727 N	003° 30.583 W
34	50° 19.833 N	003° 29.867 W
35	50° 20.433 N	003° 28.967 W
36	50° 21.118 N	003° 28.898 W
37	50° 21.531 N	003° 29.279 W
38	50° 22.031 N	003° 30.160 W
39	50° 22.187 N	003° 29.752 W
40	50° 22.713 N	003° 29.163 W
41	50° 22.836 N	003° 28.740 W

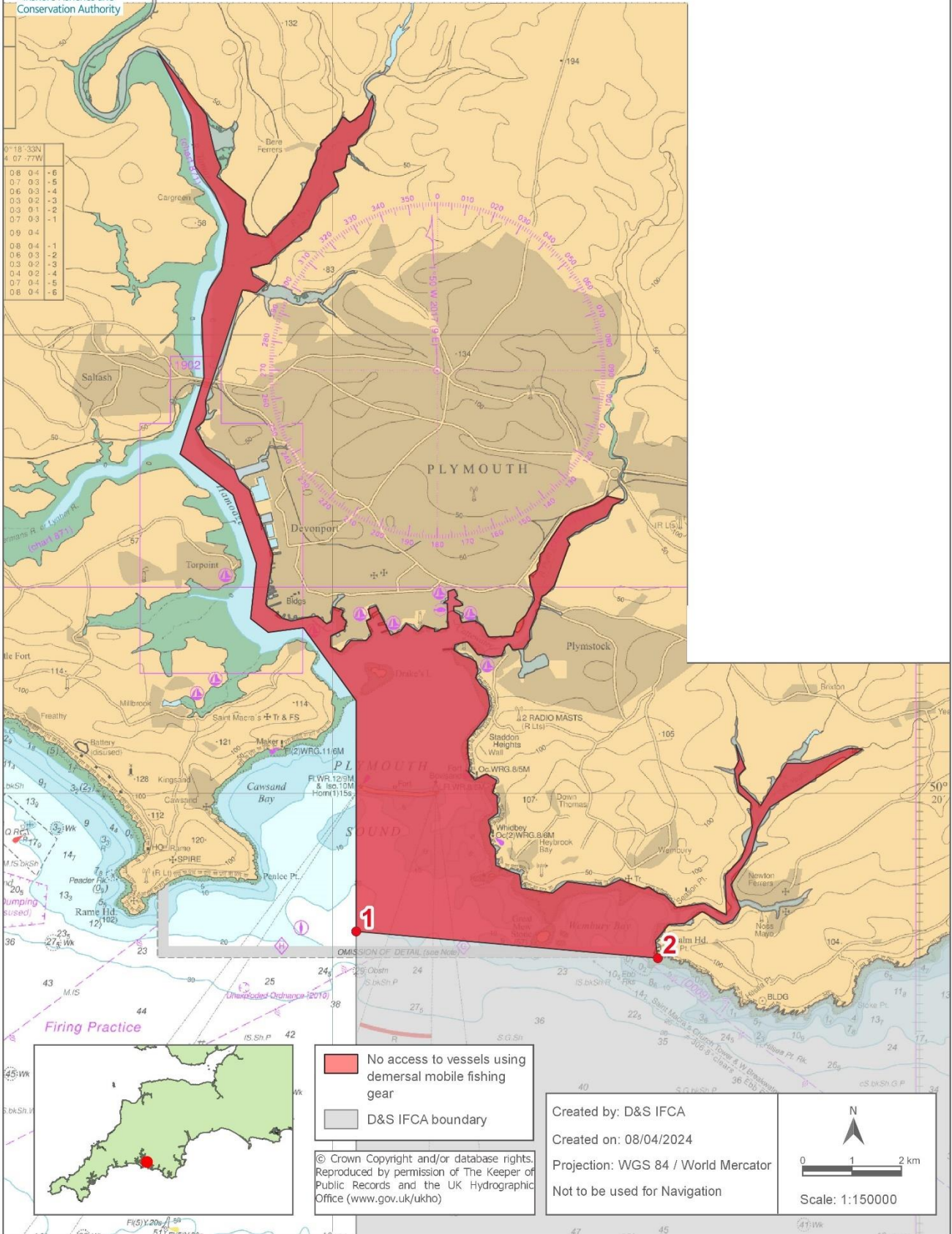


**Annex 3b Tor Bay – Access Area for Vessels using Scallop Gear in accordance with Paragraphs 2.8 and 3.3 of the Mobile Fishing Permit Byelaw Category One Permit Conditions.**

**Access area for scallop gear within the D&S IFCA District outlined by the following points plotted sequentially from Point 30 to Point 41, then returning to Point 30.**

<b>Point number</b>	<b>Latitude</b>	<b>Longitude</b>
30	50° 23.212 N	003° 28.696 W
31	50° 20.400 N	003° 27.850 W
32	50° 19.500 N	003° 30.200 W
33	50° 19.727 N	003° 30.583 W
34	50° 19.833 N	003° 29.867 W
35	50° 20.433 N	003° 28.967 W
36	50° 21.118 N	003° 28.898 W
37	50° 21.531 N	003° 29.279 W
38	50° 22.031 N	003° 30.160 W
39	50° 22.187 N	003° 29.752 W
40	50° 22.713 N	003° 29.163 W
41	50° 22.836 N	003° 28.740 W

**Annex 4 Plymouth Sound and Estuaries - No Access to Vessels using Demersal Mobile Fishing Gear**



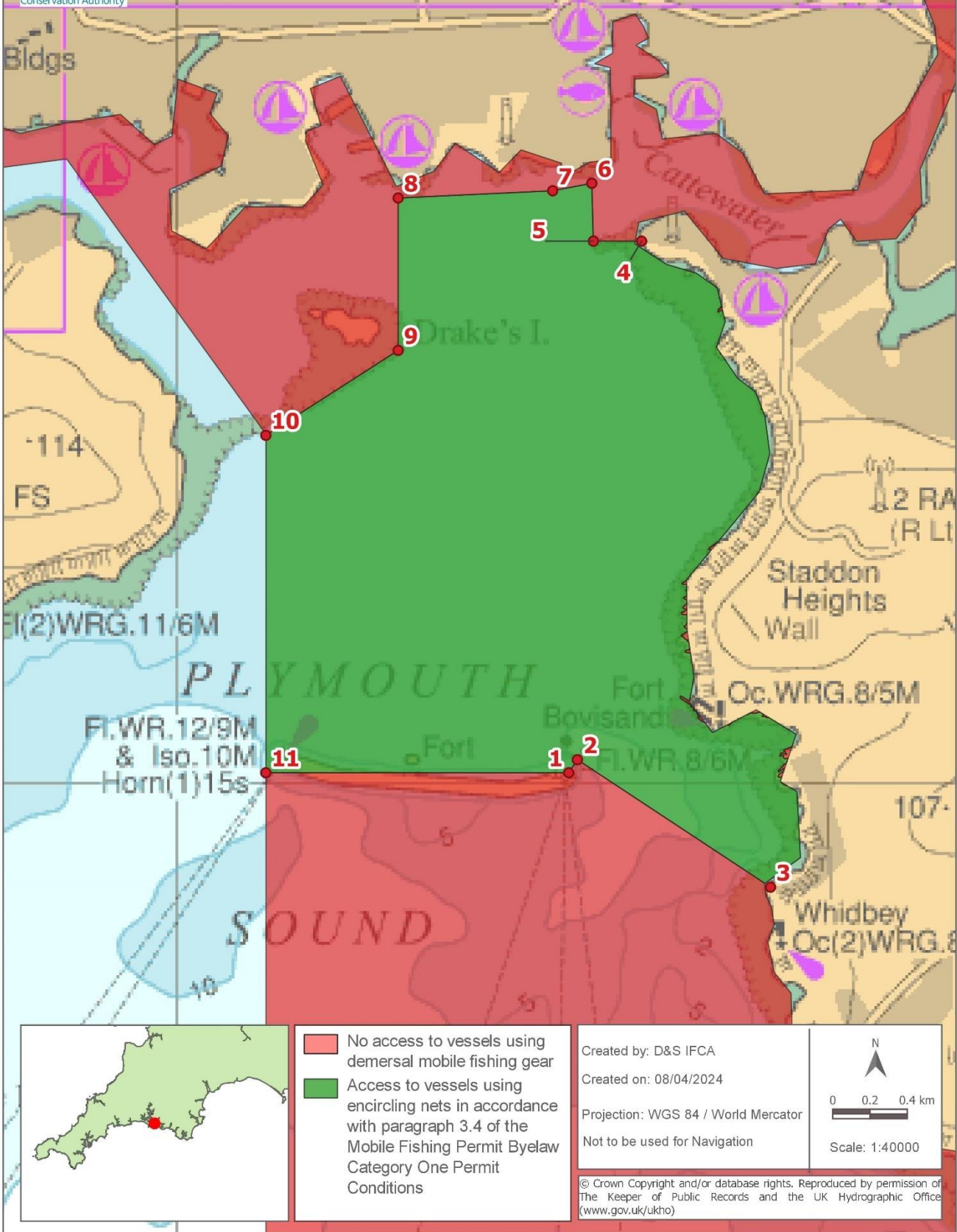


**Annex 4 – Plymouth Sound and Estuaries - No Access For Vessels using Demersal Mobile Fishing Gear.**

**No access to vessels using demersal mobile fishing gear within the D&S IFCA District landward of a line drawn between Points 1 and 2. The landward boundary follows Mean High Water.**

<b>Point</b>	<b>Latitude</b>	<b>Longitude</b>
1	50° 18.484 N	004° 09.600 W
2	50° 18.192 N	004° 04.458 W

**Annex 4a Plymouth Sound and Estuaries - Access to Vessels using Encircling Nets in accordance with Paragraph 3.4 of the Mobile Fishing Permit Byelaw Category One Permit Conditions**



■ No access to vessels using demersal mobile fishing gear  
■ Access to vessels using encircling nets in accordance with paragraph 3.4 of the Mobile Fishing Permit Byelaw Category One Permit Conditions

Created by: D&S IFCA  
 Created on: 08/04/2024  
 Projection: WGS 84 / World Mercator  
 Not to be used for Navigation

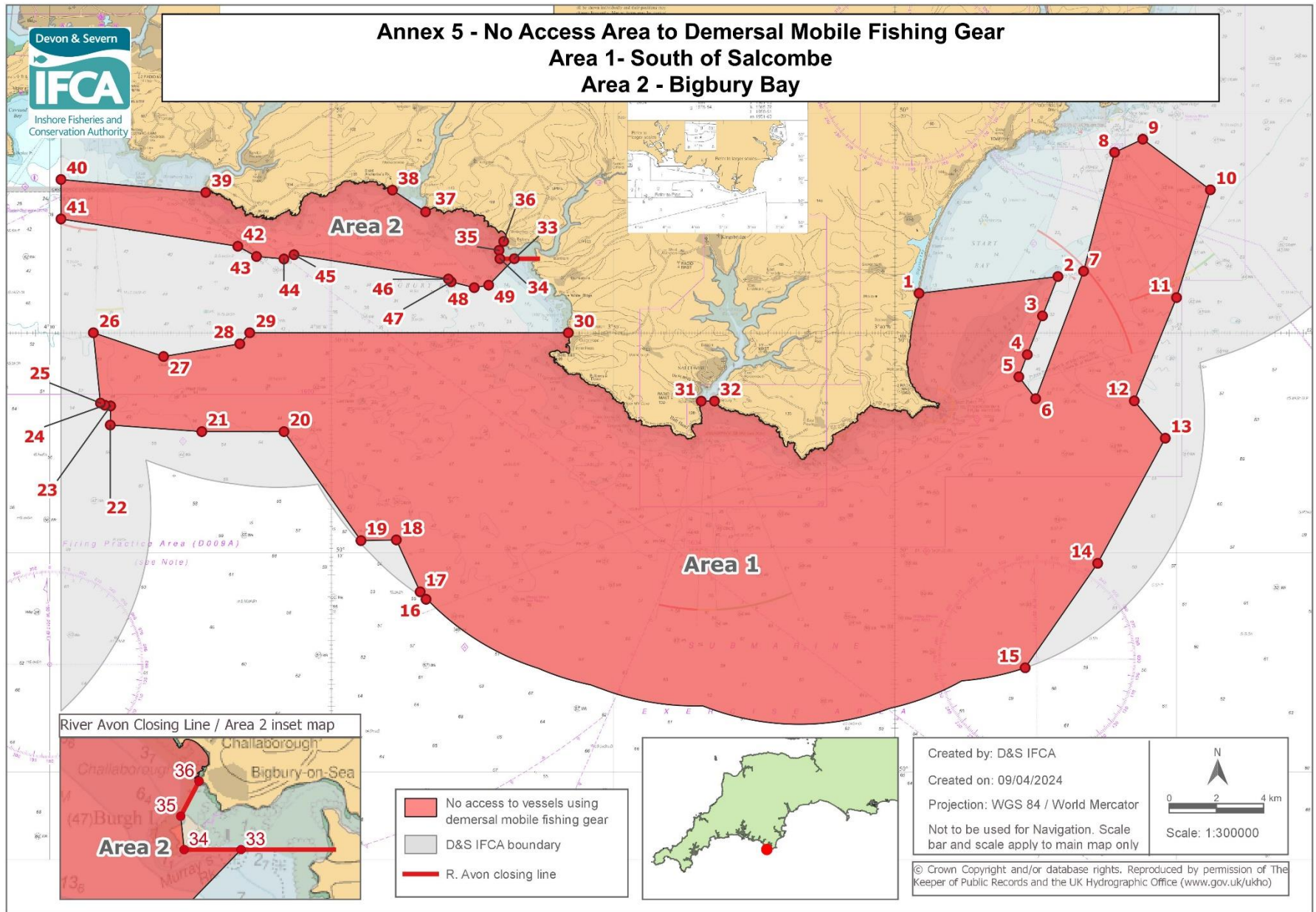
N  
 0 0.2 0.4 km  
 Scale: 1:40000

© Crown Copyright and/or database rights. Reproduced by permission of The Keeper of Public Records and the UK Hydrographic Office (www.gov.uk/ukho)

**Annex 4a Plymouth Sound and Estuaries - Access Area to Vessels using Encircling Nets in accordance with Paragraph 3.4 of the Mobile Fishing Permit Byelaw Category One Permit Conditions.**

**Access area for vessels using encircling nets within the D&S IFCA District outlined by the following points plotted sequentially from Point 1 to Point 11, then returning to Point 1. The landward boundary follows Mean High Water.**

<b>Point Number</b>	<b>Latitude</b>	<b>Longitude</b>
1	50° 20.023 N	004° 08.231 W
2	50° 20.061 N	004° 08.192 W
3	50° 19.692 N	004° 07.319 W
Landward boundary to follow mean high water to Point 4		
4	50° 21.562 N	004° 07.902 W
5	50° 21.562 N	004° 08.120 W
6	50° 21.730 N	004° 08.127 W
7	50° 21.708 N	004° 08.304 W
8	50° 21.687 N	004° 09.002 W
9	50° 21.246 N	004° 09.002 W
10	50° 21.000 N	004° 09.600 W
11	50° 20.023 N	004° 09.600 W



All Positions are expressed in degrees, decimal minutes (DDM) and shall be measured according to the WGS84 Geographic Co-ordinate System

Version control: Mobile Fishing Permit Byelaw Category 1 (At sea) Annexes

10<sup>th</sup> April 2024

**Annex 5 – No Access Area for Vessels using Demersal Mobile Fishing Gear.**

**Area 1  
South of Salcombe**

**No access to vessels using demersal mobile fishing gear in the area within the D&S IFCA District outlined by the following points plotted sequentially from Point 1 to Point 32, then returning to Point**

**1. The landward boundary follows Mean High Water.**

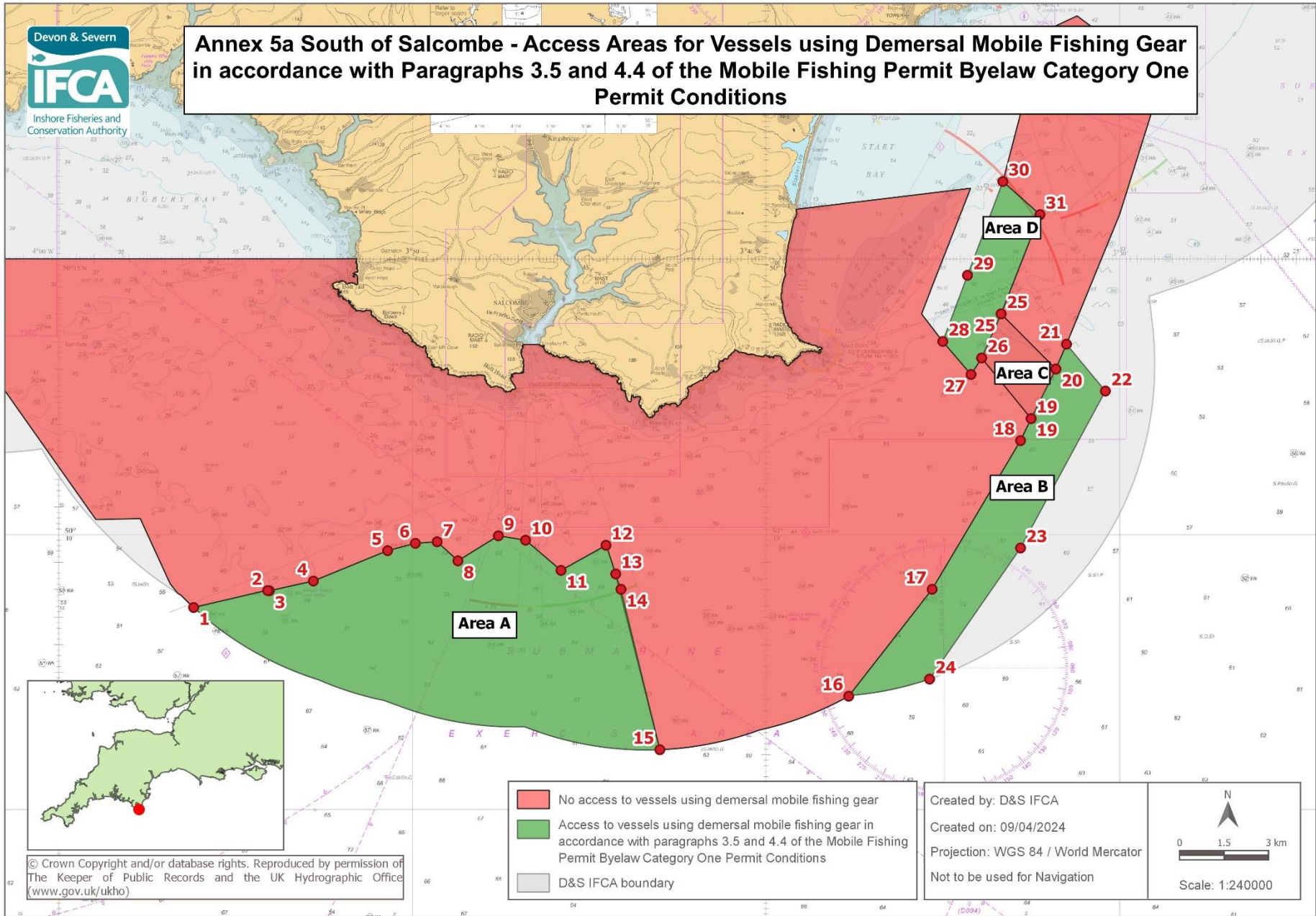
<b>Point Number</b>	<b>Latitude</b>	<b>Longitude</b>
1	50° 15.897 N	003° 39.141 W
2	50° 16.278 N	003° 34.212 W
3	50° 15.384 N	003° 34.758 W
4	50° 14.502 N	003° 35.298 W
5	50° 13.998 N	003° 35.598 W
6	50° 13.500 N	003° 35.000 W
7	50° 16.400 N	003° 33.300 W
8	50° 19.100 N	003° 32.200 W
9	50° 19.400 N	003° 31.200 W
10	50° 18.250 N	003° 28.800 W
11	50° 15.800 N	003° 30.000 W
12	50° 13.450 N	003° 31.500 W
13	50° 12.600 N	003° 30.400 W
14	50° 09.750 N	003° 32.800 W
15	50° 07.368 N	003° 35.373 W
Then follow the Six Nautical Mile Limit to Point 16		
16	50° 08.930 N	003° 56.640 W
17	50° 09.100 N	003° 56.850 W
18	50° 10.284 N	003° 57.696 W
19	50° 10.267 N	003° 58.950 W
20	50° 12.750 N	004° 01.683 W
21	50° 12.750 N	004° 04.600 W
22	50° 12.900 N	004° 07.850 W
23	50° 13.334 N	004° 07.836 W
24	50° 13.352 N	004° 08.043 W
25	50° 13.400 N	004° 08.200 W
26	50° 15.000 N	004° 08.450 W
27	50° 14.460 N	004° 05.958 W
28	50° 14.748 N	004° 03.251 W
29	50° 15.000 N	004° 02.900 W
30	50° 15.000 N	003° 51.590 W
Landward boundary follows Mean High Water to Point 31		
31	50° 13.444 N	003° 46.871 W
32	50° 13.444 N	003° 46.402 W
Landward boundary follows Mean High Water to Point 1		

## Annex 5 – No Access Area for Vessels using Demersal Mobile Fishing Gear.

### Area 2 Bigbury Bay

No access to vessels using demersal mobile fishing gear in the area within the D&S IFCA District outlined by the following points plotted sequentially from Point 33 to Point 49, then returning to Point 33. The landward boundary follows Mean High Water.

Point Number	Latitude	Longitude
33	50° 16.684 N	003° 53.508 W
34	50° 16.684 N	003° 54.018 W
35	50° 16.876 N	003° 54.049 W
36	50° 17.077 N	003° 53.884 W
Landward boundary follows Mean High Water to Point 37		
37	50° 17.750 N	003° 56.657 W
38	50° 18.243 N	003° 57.834 W
Landward boundary follows Mean High Water to Point 39		
39	50° 18.191 N	004° 04.460 W
40	50° 18.484 N	004° 09.600 W
41	50° 17.588 N	004° 09.600 W
42	50° 16.967 N	004° 03.323 W
43	50° 16.734 N	004° 02.658 W
44	50° 16.678 N	004° 01.685 W
45	50° 16.775 N	004° 01.328 W
46	50° 16.222 N	003° 55.848 W
47	50° 16.158 N	003° 55.749 W
48	50° 16.026 N	003° 54.930 W
49	50° 16.083 N	003° 54.417 W



All Positions are expressed in degrees, decimal minutes (DDM) and shall be measured according to the WGS84 Geographic Co-ordinate System

Version control: Mobile Fishing Permit Byelaw Category 1 (At sea) Annexes

10<sup>th</sup> April 2024

**Annex 5a – Access Areas (A, B, C and D) for Vessels using Demersal Mobile Fishing Gear in accordance with Paragraphs 3.5 and 4.4 of the Mobile Fishing Permit Byelaw Category One Permit Conditions.**

**Area A**

**Access areas for vessels using demersal mobile fishing gear within the D&S IFCA District outlined by the following points plotted sequentially from Point 1 to Point 15, then returning to Point 1.**

<b>Point Number</b>	<b>Latitude</b>	<b>Longitude</b>
1	50° 08.669 N	003° 56.186 W
2	50° 08.977 N	003° 54.092 W
3	50° 08.973 N	003° 54.046 W
4	50° 09.150 N	003° 52.800 W
5	50° 09.702 N	003° 50.700 W
6	50° 09.835 N	003° 49.915 W
7	50° 09.863 N	003° 49.300 W
8	50° 09.517 N	003° 48.711 W
9	50° 09.972 N	003° 47.568 W
10	50° 09.892 N	003° 46.798 W
11	50° 09.343 N	003° 45.795 W
12	50° 09.800 N	003° 44.525 W
13	50° 09.279 N	003° 44.248 W
14	50° 09.000 N	003° 44.100 W
15	50° 06.084 N	003° 43.000 W
Then follow the six nautical mile limit to Point 1		

**Area B**

**Access areas for vessels using demersal mobile fishing gear within the D&S IFCA District outlined by the following points plotted sequentially from Point 16 to Point 24, then returning to Point 16.**

<b>Point Number</b>	<b>Latitude</b>	<b>Longitude</b>
16	50° 07.057 N	003° 37.660 W
17	50° 09.000 N	003° 35.300 W
18	50° 11.700 N	003° 32.800 W
19	50° 12.100 N	003° 32.500 W
20	50° 13.000 N	003° 31.800 W
21	50° 13.450 N	003° 31.500 W
22	50° 12.600 N	003° 30.400 W
23	50° 09.750 N	003° 32.800 W
24	50° 07.368 N	003° 35.373 W
Then follow the six nautical mile limit to Point 16		



### Area C

Access areas for vessels using demersal mobile fishing gear within the D&S IFCA District outlined by the following points plotted from Point 19 to Point 20, then to Point 25 and on to Point 26, then returning to Point 19.

Point Number	Latitude	Longitude
19	50° 12.100 N	003° 32.500 W
20	50° 13.000 N	003° 31.800 W
25	50° 14.000 N	003° 33.350 W
26	50° 13.200 N	003° 33.900 W

### Area D

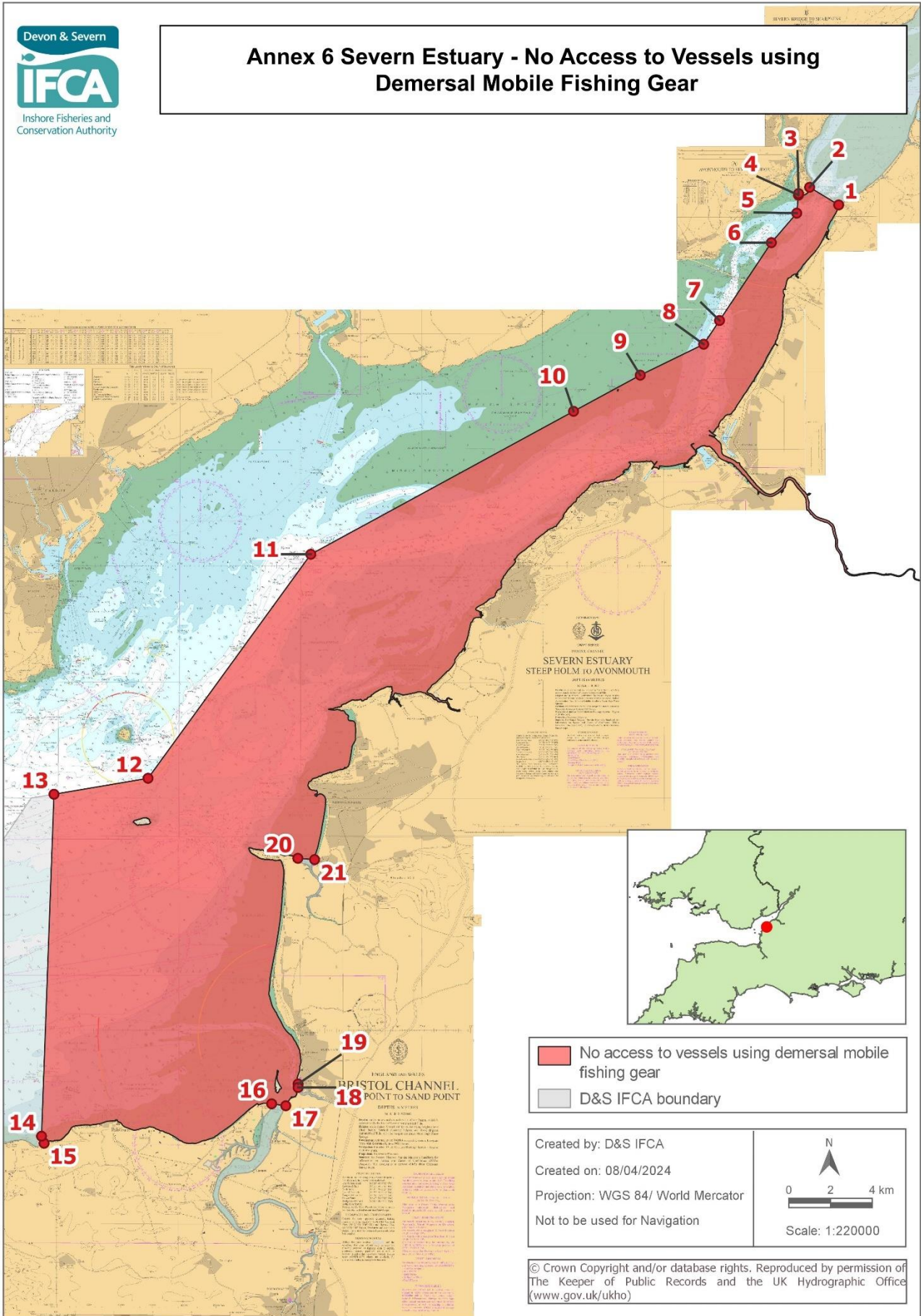
Access areas for vessels using demersal mobile fishing gear within the D&S IFCA District outlined by the following points plotted sequentially from Point 25 to Point 31, then returning to Point 25.

Point Number	Latitude	Longitude
25	50° 14.000 N	003° 33.350 W
26	50° 13.200 N	003° 33.900 W
27	50° 12.900 N	003° 34.200 W
28	50° 13.500 N	003° 35.000 W
29	50° 14.700 N	003° 34.300 W
30	50° 16.400 N	003° 33.300 W
31	50° 15.800 N	003° 32.250 W

**Permit Condition 4.4 Table 1**

Annex	Sub Area of Annex 5a	Annual Access dates
5a	Area A	1 <sup>st</sup> Jan to 31 <sup>st</sup> May inclusive
5a	Area B	1 <sup>st</sup> Jan to 31 <sup>st</sup> March inclusive
5a	Area C	<b>NO ACCESS</b>
5a	Area D	1 <sup>st</sup> Feb to 31 <sup>st</sup> Aug inclusive

**Annex 6 Severn Estuary - No Access to Vessels using Demersal Mobile Fishing Gear**



All Positions are expressed in degrees, decimal minutes (DDM) and shall be measured according to the WGS84 Geographic Co-ordinate System

Version control: Mobile Fishing Permit Byelaw Category 1 (At sea) Annexes

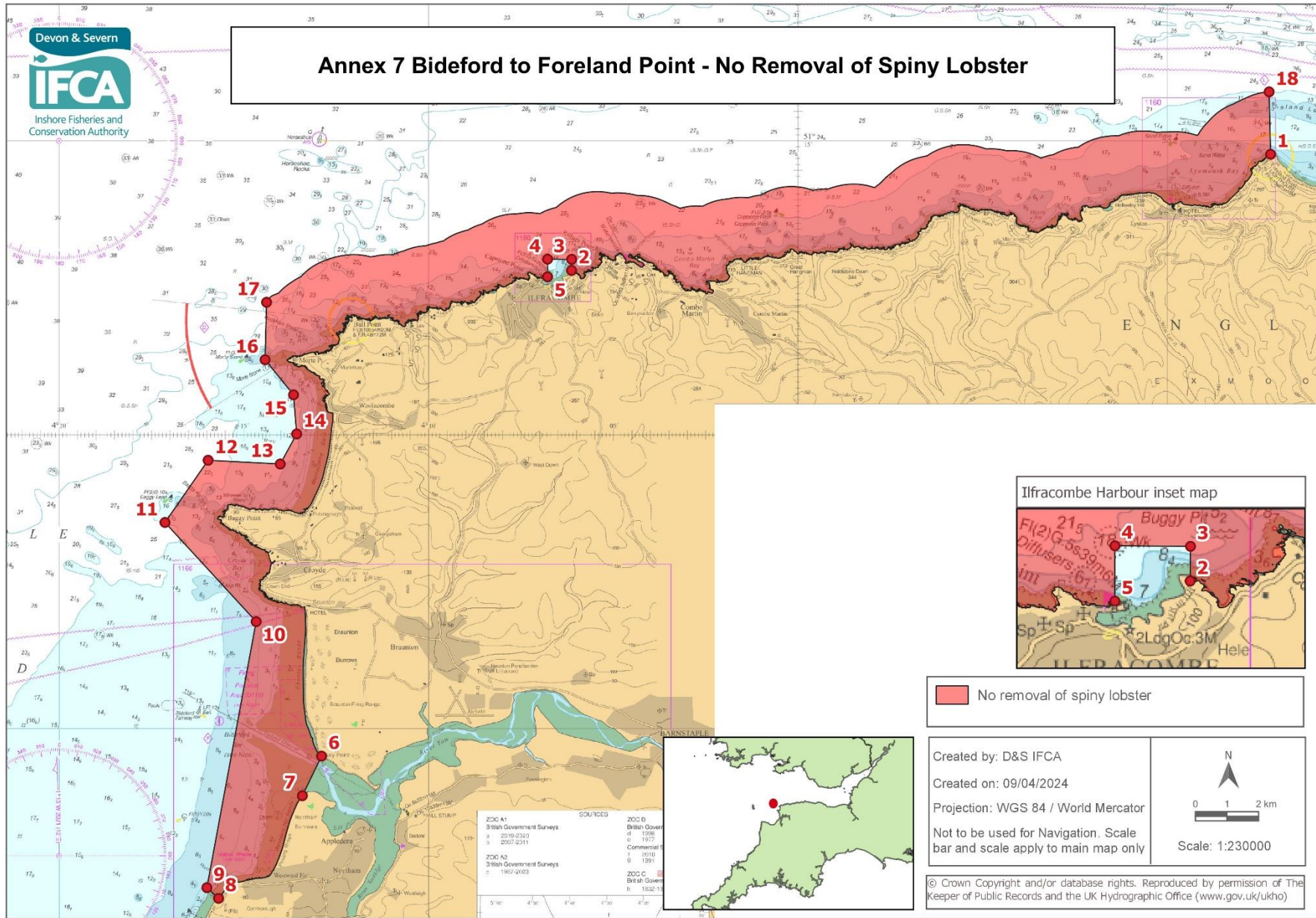
10<sup>th</sup> April 2024

**Annex 6 Severn Estuary – No Access For Vessels using Demersal Mobile Fishing Gear.**

**No access to vessels using demersal mobile fishing gear in the area within the D&S IFCA District outlined by the following points plotted sequentially from Point 1 to Point 21, then returning to Point**

**1. The landward boundary follows Mean High Water.**

<b>Point Number</b>	<b>Latitude</b>	<b>Longitude</b>
1	51° 36.310 N	002° 37.696 W
2	51° 36.769 N	002° 38.898 W
Landward boundary follows Mean High Water to Point 3		
3	51° 36.608 N	002° 39.358 W
4	51° 36.568 N	002° 39.364 W
5	51° 36.102 N	002° 39.436 W
6	51° 35.342 N	002° 40.494 W
7	51° 33.335 N	002° 42.655 W
8	51° 32.722 N	002° 43.314 W
9	51° 31.927 N	002° 45.944 W
10	51° 30.997 N	002° 48.710 W
11	51° 27.306 N	002° 59.584 W
12	51° 21.512 N	003° 06.293 W
13	51° 21.092 N	003° 10.173 W
14	51° 12.256 N	003° 10.641 W
15	51° 12.072 N	003° 10.532 W
Landward boundary follows Mean High Water to Point 16		
16	51° 13.106 N	003° 01.177 W
17	51° 13.056 N	003° 00.595 W
Landward boundary follows Mean High Water to Point 18		
18	51° 13.528 N	003° 00.091 W
19	51° 13.618 N	003° 00.091 W
Landward boundary follows Mean High Water to Point 20		
20	51° 19.450 N	003° 00.108 W
21	51° 19.417 N	002° 59.418 W
Landward boundary follows Mean High Water to Point 1		



All Positions are expressed in degrees, decimal minutes (DDM) and shall be measured according to the WGS84 Geographic Co-ordinate System

Version control: Mobile Fishing Permit Byelaw Category 1 (At sea) Annexes

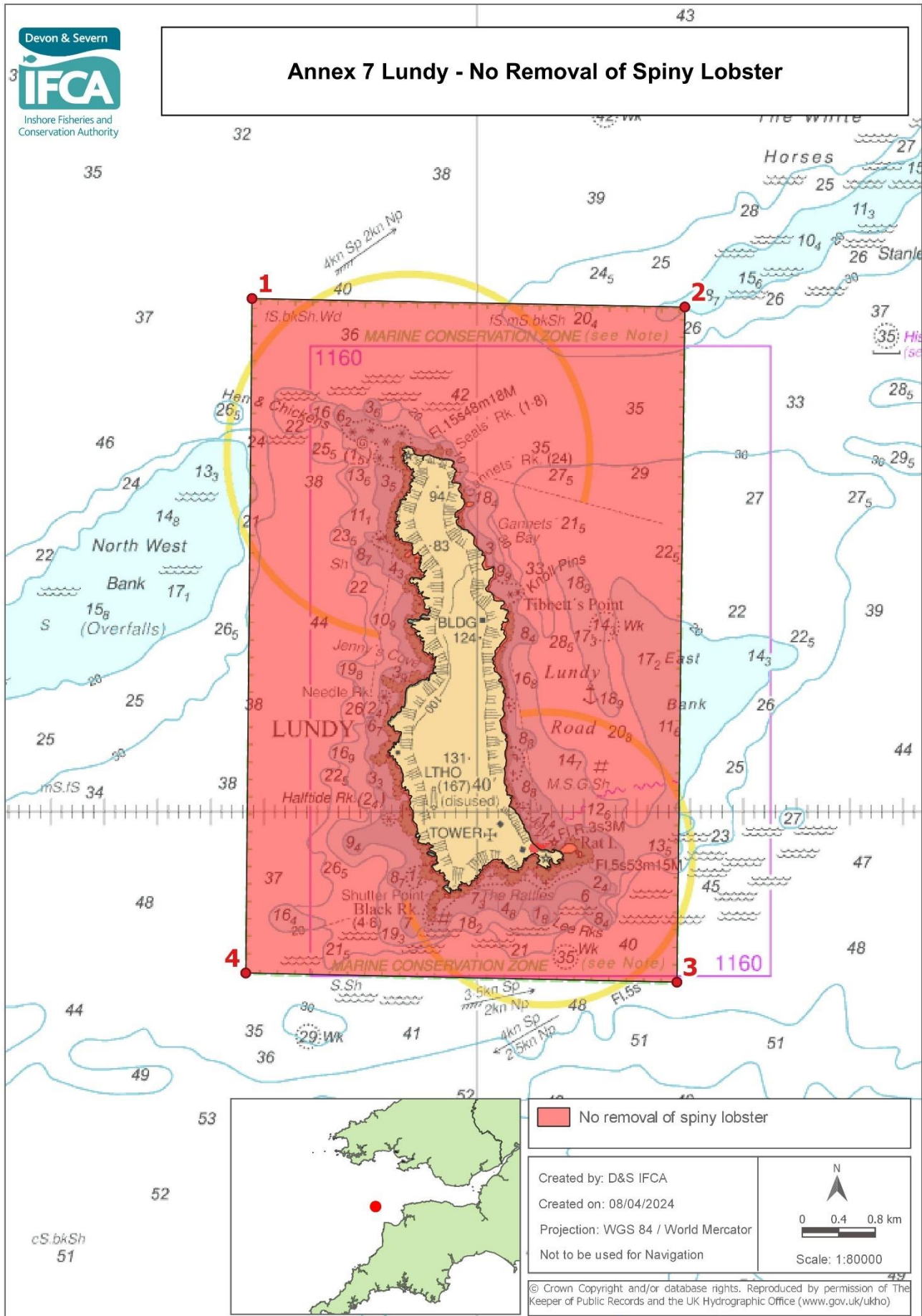
10<sup>th</sup> April 2024

**Annex 7 Bideford to Foreland Point – No Removal of Spiny Lobster.**

**No removal of spiny lobster in the area within the D&S IFCA District outlined by the following points plotted sequentially from Point 1 to Point 18, then returning to Point 1. The landward boundary follows Mean High Water.**

Point Number	Latitude	Longitude
1	51° 14.764 N	003° 47.204 W
Landward boundary follows Mean High Water to Point 2		
2	51° 12.792 N	004° 06.130 W
3	51° 12.980 N	004° 06.126 W
4	51° 12.983 N	004° 06.778 W
5	51° 12.683 N	004° 06.778 W
Landward boundary follows Mean High Water to Point 6		
6	51° 04.524 N	004° 12.897 W
7	51° 03.849 N	004° 13.416 W
Landward boundary follows Mean High Water to Point 8		
8	51° 02.098 N	004° 15.685 W
9	51° 02.281 N	004° 16.001 W
10	51° 06.816 N	004° 14.667 W
11	51° 08.505 N	004° 17.135 W
12	51° 09.563 N	004° 15.967 W
13	51° 09.499 N	004° 14.015 W
14	51° 10.011 N	004° 13.570 W
15	51° 10.676 N	004° 13.655 W
16	51° 11.274 N	004° 14.426 W
17	51° 12.250 N	004° 14.385 W
Seaward boundary follows a one nautical mile line from Mean High Water to Point 18		
18	51° 15.825 N	003° 47.244 W

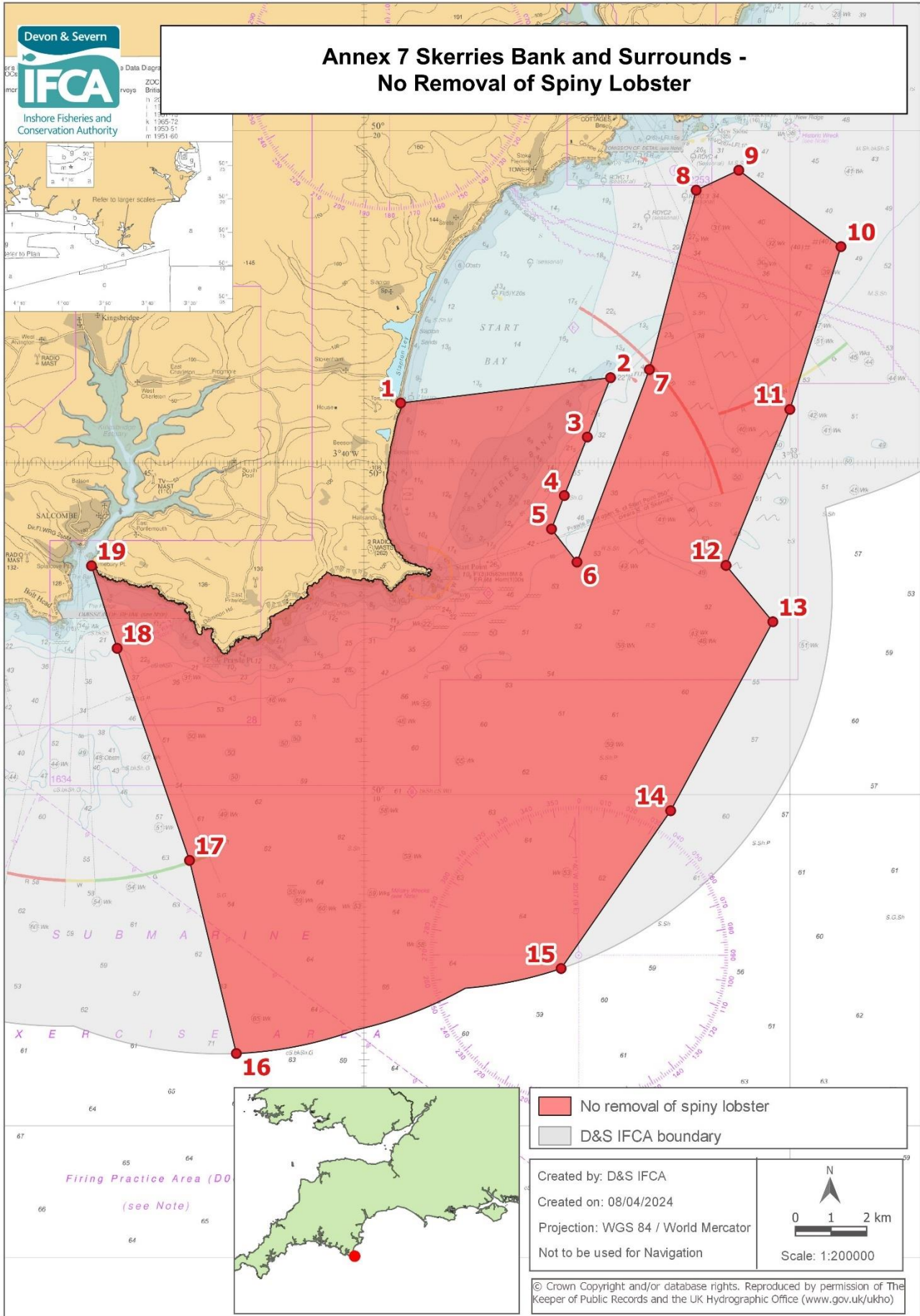
### Annex 7 Lundy - No Removal of Spiny Lobster



**Annex 7 Lundy – No Removal of Spiny Lobster.**

**No removal of spiny lobster in the area within the D&S IFCA District outlined by the following points plotted sequentially from Point 1 to Point 4, then returning to Point 1.**

<b>Point Number</b>	<b>Latitude</b>	<b>Longitude</b>
1	51° 13.022 N	004° 42.113 W
2	51° 12.972 N	004° 38.049 W
3	51° 08.986 N	004° 38.123 W
4	51° 09.040 N	004° 42.172 W



All Positions are expressed in degrees, decimal minutes (DDM) and shall be measured according to the WGS84 Geographic Co-ordinate System

Version control: Mobile Fishing Permit Byelaw Category 1 (At sea) Annexes

10<sup>th</sup> April 2024

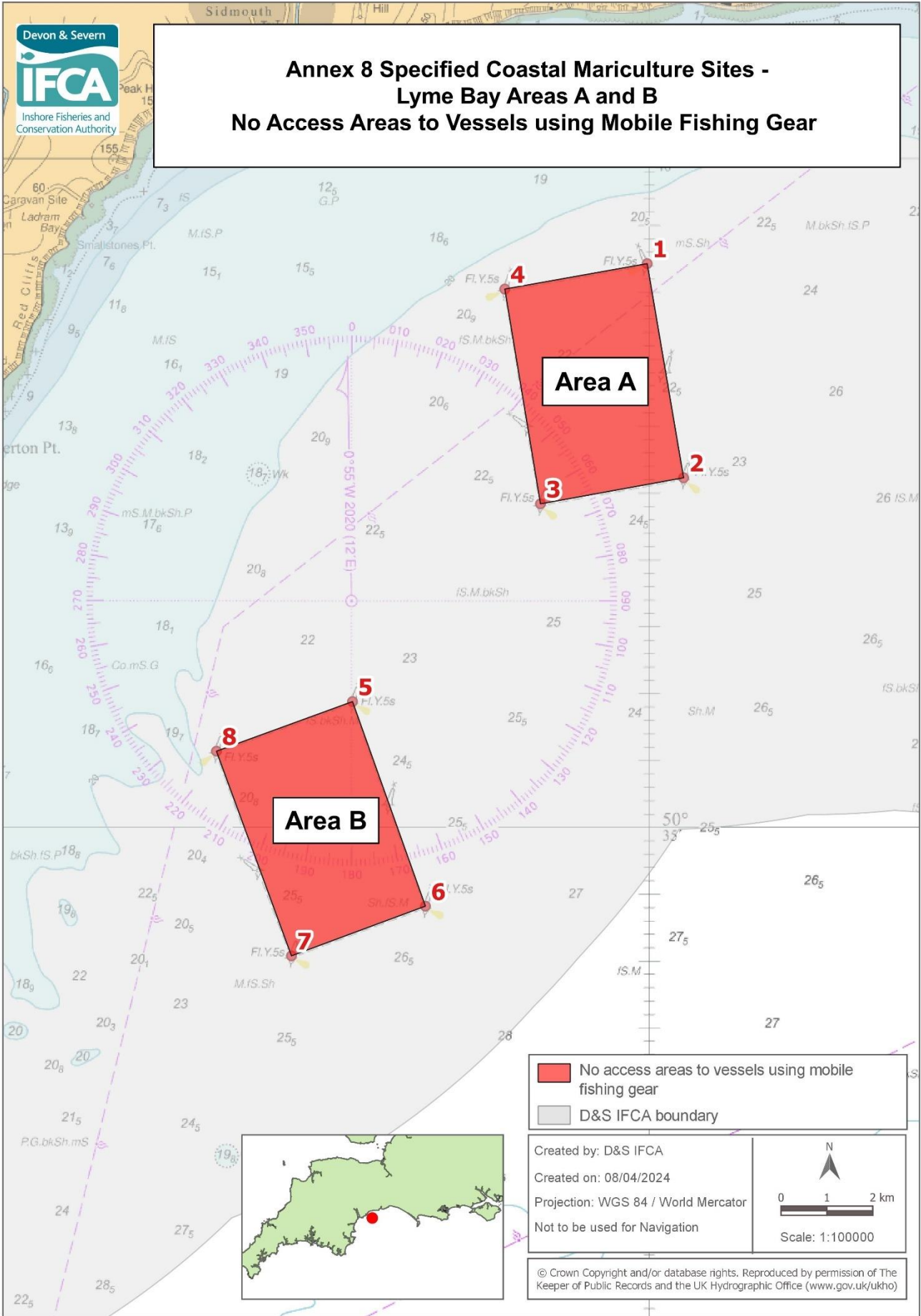


## Annex 7 Skerries Bank and Surrounds – No Removal of Spiny Lobster

**No removal of spiny lobster in the area within the D&S IFCA District outlined by the following points plotted sequentially from Point 1 to Point 19, then returning to Point 1. The landward boundary follows Mean High Water.**

Point Number	Latitude	Longitude
1	50° 15.897 N	003° 39.141 W
2	50° 16.278 N	003° 34.212 W
3	50° 15.384 N	003° 34.758 W
4	50° 14.502 N	003° 35.298 W
5	50° 13.998 N	003° 35.598 W
6	50° 13.500 N	003° 35.000 W
7	50° 16.400 N	003° 33.300 W
8	50° 19.100 N	003° 32.200 W
9	50° 19.400 N	003° 31.200 W
10	50° 18.250 N	003° 28.800 W
11	50° 15.800 N	003° 30.000 W
12	50° 13.450 N	003° 31.500 W
13	50° 12.600 N	003° 30.400 W
14	50° 09.750 N	003° 32.800 W
15	50° 07.368 N	003° 35.373 W
Then follow the six nautical mile limit to Point 16		
16	50° 06.084 N	003° 43.000 W
17	50° 09.000 N	003° 44.100 W
18	50° 12.200 N	003° 45.800 W
19	50° 13.444 N	003° 46.402 W
Landward boundary follows mean high water to Point 1		

**Annex 8 Specified Coastal Mariculture Sites -  
 Lyme Bay Areas A and B  
 No Access Areas to Vessels using Mobile Fishing Gear**



All Positions are expressed in degrees, decimal minutes (DDM) and shall be measured according to the WGS84 Geographic Co-ordinate System

Version control: Mobile Fishing Permit Byelaw Category 1 (At sea) Annexes

10<sup>th</sup> April 2024

**Annex 8 Specified Coastal Mariculture Sites  
No Access Areas to Vessels using Mobile Fishing Gear in accordance with Paragraph 3.8 of the  
Mobile Fishing Permit Byelaw Category One Permit Conditions**

**Area A Lyme Bay**

**No access to vessels using mobile fishing gear in the area within the D&S IFCA District outlined by the following points plotted sequentially from Point 1 to Point 4, then returning to Point 1.**

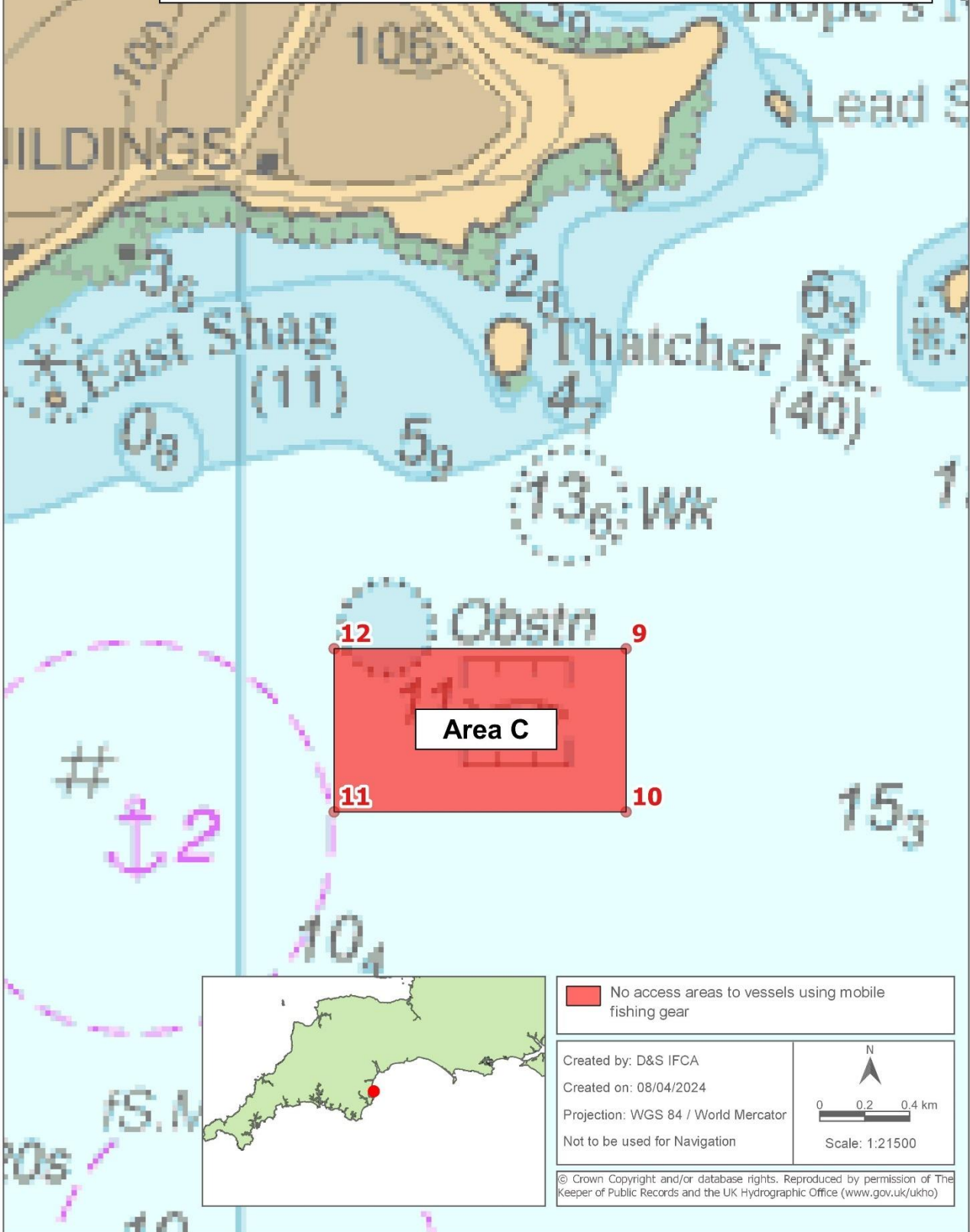
<b>Point Number</b>	<b>Latitude</b>	<b>Longitude</b>
1	50° 39.200 N	003° 10.028 W
2	50° 37.600 N	003° 09.600 W
3	50° 37.405 N	003° 11.281 W
4	50° 39.010 N	003° 11.700 W

**Areas B Lyme Bay**

**No access to vessels using mobile fishing gear in the area within the D&S IFCA District outlined by the following points plotted sequentially from Point 5 to Point 8, then returning to Point 5.**

<b>Point Number</b>	<b>Latitude</b>	<b>Longitude</b>
5	50° 35.927 N	003° 13.488 W
6	50° 34.397 N	003° 12.632 W
7	50° 34.025 N	003° 14.205 W
8	50° 35.556 N	003° 15.086 W

**Annex 8 Specified Coastal Mariculture Sites -  
 Tor Bay Area C  
 No Access Areas to Vessels using Mobile Fishing Gear**



## Annex 8 Coastal Mariculture Sites

### Area C Tor Bay

No access to vessels using mobile fishing gear in the area within the D&S IFCA District outlined by the following points plotted sequentially from Point 9 to Point 12, then returning to Point 9.

Point Number	Latitude	Longitude
9	50° 26.865 N	003° 29.080 W
10	50° 26.615 N	003° 29.080 W
11	50° 26.615 N	003° 29.780 W
12	50° 26.865 N	003° 29.780 W

## Annex 9

### Areas where IVMS Transmission is not required in accordance with Paragraph 2.5 (b) of the Mobile Fishing Permit Byelaw Category One Permit Conditions.

**Brixham** – Landward of the boundary line between Points:

Point	Latitude	Longitude
A	50° 24.335 N	003° 30.779 W
B	50° 24.190 N	003° 31.226 W

**Torquay** - Landward of the boundary line between Points:

Point	Latitude	Longitude
A	50° 27.461 N	003° 31.731 W
B	50° 27.433 N	003° 31.736 W

**Teignmouth**- Landward of the boundary line between Points:

Point	Latitude	Longitude
A (Southern leading light)	50° 32.546 N	003° 29.810 W
B (The Ness)	50° 32.279 N	003° 29.810 W

**Exmouth** - Landward of the boundary line between Points:

Point	Latitude	Longitude
A (Langstone Point)	50° 35.518 N	003° 26.629 W
B (Orcombe Point)	50° 36.421 N	003° 23.108 W

**Axmouth** - Landward of the boundary line between Points:

Point	Latitude	Longitude
A	50° 42.135 N	003° 03.354 W
B	50° 42.135 N	003° 03.274 W

**Dartmouth** – Landward of the boundary line between Points:

Point	Latitude	Longitude
A (Combe Point)	50° 19.648 N	003° 34.220 W
B (Inner Froward Point)	50° 20.121 N	003° 32.648 W

## Annex 9 (continued)

### Areas where IVMS Transmission is not required in accordance with Paragraph 2.5 (b) of the Mobile Fishing Permit Byelaw Category One Permit Conditions.

**Salcombe** – Landward of the boundary line between Points:

Point	Latitude	Longitude
A (Splat Cove)	50° 13.444 N	003° 46.871 W
B (Limebury Point)	50° 13.444 N	003° 46.402 W

**Yealm** – Landward of the boundary line between Points:

Point	Latitude	Longitude
A (Season Point)	50° 18.736 N	004° 04.148 W
B (Mouth Stone)	50° 18.550 N	004° 04.275 W

**Sutton Harbour** – Landward of the boundary line between Points:

Point	Latitude	Longitude
A	50° 21.580 N	004° 09.820 W
B	50° 21.850 N	004° 07.490 W

**Tamar** – Landward of the boundary line between Points:

Point	Latitude	Longitude
A	50° 21.760 N	004° 10.120 W
B	50° 21.580 N	004° 10.040 W

**Taw Torridge** – Landward of the boundary line between Points:

Point	Latitude	Longitude
A	51° 02.620 N	004° 14.270 W
B	51° 07.040 N	004° 13.470 W

**Ilfracombe** – Landward of the boundary line between Points:

Point	Latitude	Longitude
A	51° 12.640 N	004° 06.680 W
B	51° 12.580 N	004° 06.500 W

**Watchet** – Landward of the boundary line between Points:

Point	Latitude	Longitude
A	51° 11.040 N	003° 19.750 W
B	51° 11.000 N	003° 19.680 W