

Notes:

The Annexes in this document were circulated in July 2024.

The corresponding Netting Permit Conditions are marked 1st July 2024.

For Archive & Reference Only

* www.ukho.gov.uk/copyright

All Positions are expressed in degrees, decimal minutes (DDM) and shall be measured according to the WGS84 Geographic Co-ordinate System

Version control: Netting Permit Byelaw Annexes 1st July 2024 – (for Archive & Reference only)

Annex 1 Bideford to Foreland Point MCZ – No Removal of Spiny Lobster

No removal of Spiny Lobster within the D&S IFCA's District outlined by the following points plotted sequentially from Point 1 to Point 18, then returning to Point 1. The landward boundary follows Mean High Water.

Point Number	Latitude	Longitude
1	51° 14.764 N	003° 47.204 W
Landward boundary follows Mean High Water to Point 2		
2	51° 12.792 N	004° 06.130 W
3	51° 12.980 N	004° 06.126 W
4	51° 12.983 N	004° 06.778 W
5	51° 12.683 N	004° 06.778 W
Landward boundary follows Mean High Water to Point 6		
6	51° 04.524 N	004° 12.897 W
7	51° 03.849 N	004° 13.416 W
Landward boundary follows Mean High Water to Point 8		
8	51° 02.098 N	004° 15.685 W
9	51° 02.281 N	004° 16.001 W
10	51° 06.816 N	004° 14.667 W
11	51° 08.505 N	004° 17.135 W
12	51° 09.563 N	004° 15.967 W
13	51° 09.499 N	004° 14.015 W
14	51° 10.011 N	004° 13.570 W
15	51° 10.676 N	004° 13.655 W
16	51° 11.274 N	004° 14.426 W
17	51° 12.250 N	004° 14.385 W
Seaward boundary follows a one nautical mile line from Mean High Water to Point 18		
18	51° 15.825 N	003° 47.244 W

* www.ukho.gov.uk/copyright

All Positions are expressed in degrees, decimal minutes (DDM) and shall be measured according to the WGS84 Geographic Co-ordinate System

Version control: Netting Permit Byelaw Annexes 1st July 2024 – (for Archive & Reference only)

Annex 1 Lundy MCZ – No Removal of Spiny Lobster

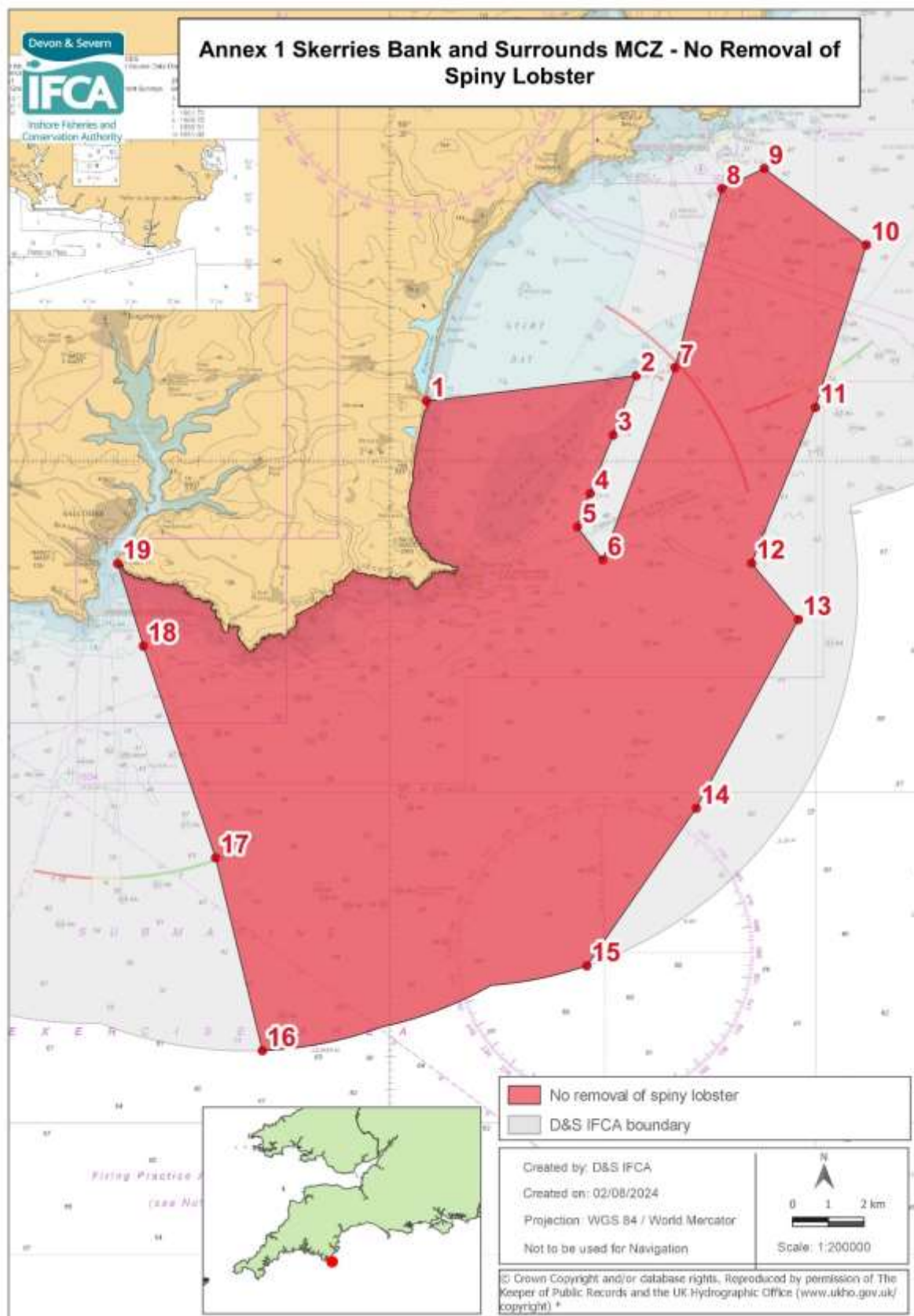
No removal of Spiny Lobster within the D&S IFCA's District outlined by the following points plotted sequentially from Point 1 to Point 4, then returning to Point 1.

Point Number	Latitude	Longitude
1	51° 13.022 N	004° 42.113 W
2	51° 12.972 N	004° 38.049 W
3	51° 08.986 N	004° 38.123 W
4	51° 09.040 N	004° 42.172 W

* www.ukho.gov.uk/copyright

All Positions are expressed in degrees, decimal minutes (DDM) and shall be measured according to the WGS84 Geographic Co-ordinate System

Version control: Netting Permit Byelaw Annexes 1st July 2024 – (for Archive & Reference only)



* www.ukho.gov.uk/copyright

All Positions are expressed in degrees, decimal minutes (DDM) and shall be measured according to the WGS84 Geographic Co-ordinate System

Version control: Netting Permit Byelaw Annexes 1st July 2024 – (for Archive & Reference only)

Annex 1 Skerries Bank and Surrounds MCZ – No Removal of Spiny Lobster

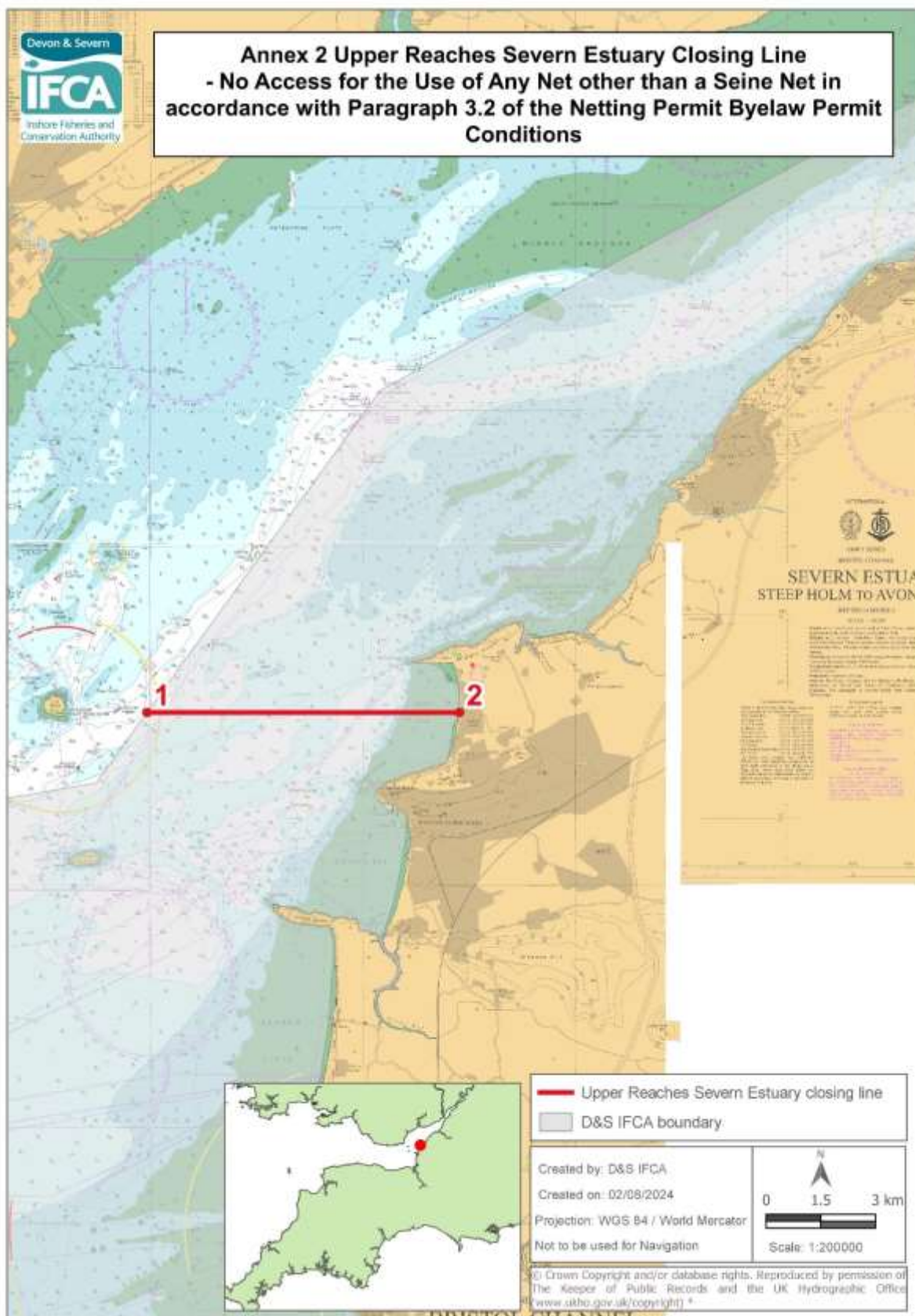
No removal of Spiny Lobster within the D&S IFCA's District outlined by the following points plotted sequentially from Point 1 to Point 19, then returning to Point 1. The landward boundary follows Mean High Water.

Point Number	Latitude	Longitude
1	50° 15.897 N	003° 39.141 W
2	50° 16.278 N	003° 34.212 W
3	50° 15.384 N	003° 34.758 W
4	50° 14.502 N	003° 35.298 W
5	50° 13.998 N	003° 35.598 W
6	50° 13.500 N	003° 35.000 W
7	50° 16.400 N	003° 33.300 W
8	50° 19.100 N	003° 32.200 W
9	50° 19.400 N	003° 31.200 W
10	50° 18.250 N	003° 28.800 W
11	50° 15.800 N	003° 30.000 W
12	50° 13.450 N	003° 31.500 W
13	50° 12.600 N	003° 30.400 W
14	50° 09.750 N	003° 32.800 W
15	50° 07.368 N	003° 35.373 W
Then follow the six nautical mile limit to Point 16		
16	50° 06.084 N	003° 43.000 W
17	50° 09.000 N	003° 44.100 W
18	50° 12.200 N	003° 45.800 W
19	50° 13.444 N	003° 46.402 W
The landward boundary follows mean high water to Point 1		

* www.ukho.gov.uk/copyright

All Positions are expressed in degrees, decimal minutes (DDM) and shall be measured according to the WGS84 Geographic Co-ordinate System

Version control: Netting Permit Byelaw Annexes 1st July 2024 – (for Archive & Reference only)



* www.ukho.gov.uk/copyright

All Positions are expressed in degrees, decimal minutes (DDM) and shall be measured according to the WGS84 Geographic Co-ordinate System

Version control: Netting Permit Byelaw Annexes 1st July 2024 – (for Archive & Reference only)

Annex 2 Upper Reaches Severn Estuary Closing Line

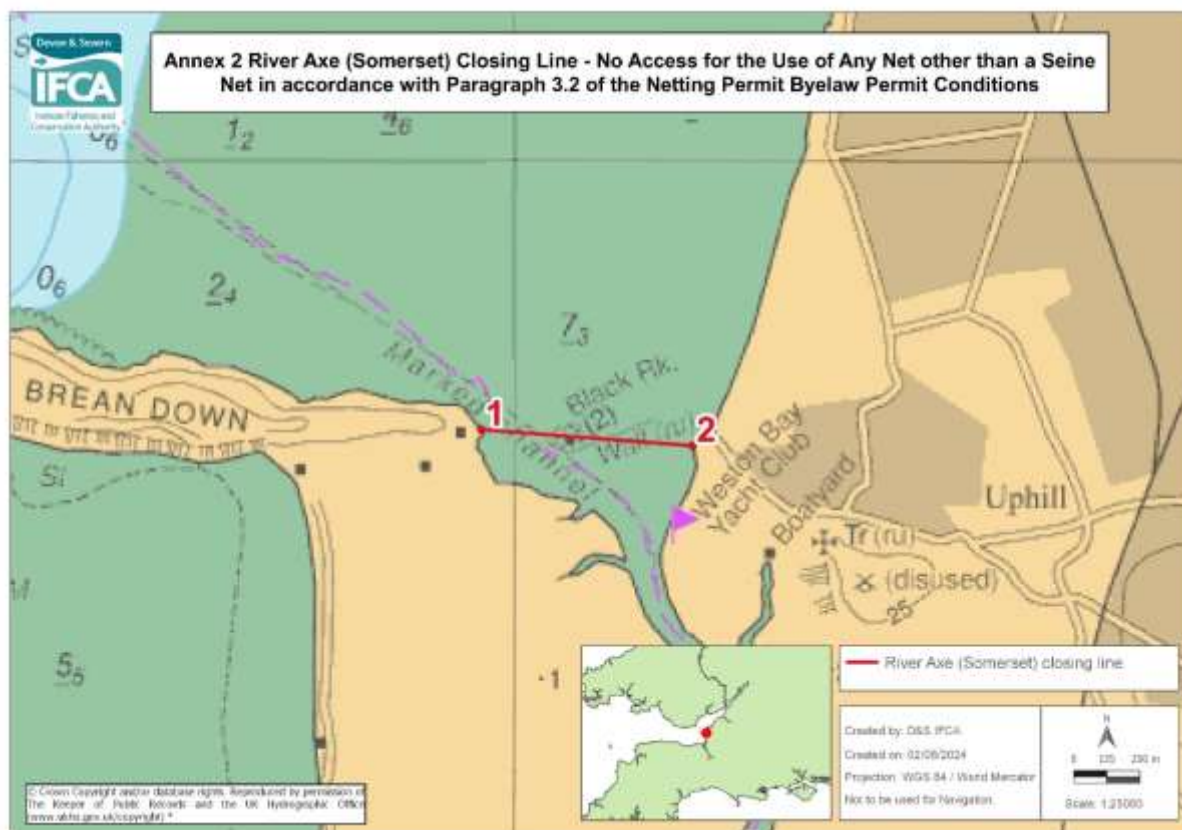
No access for the use of any net other than a seine net in accordance with paragraph 3.2 of the Netting Permit Byelaw Permit Conditions, within the D&S IFCA's District inside of a line drawn from Point 1 to Point 2 (the median line with Welsh Government waters).

Point Number	Latitude	Longitude
1	51° 22.553 N	003° 05.090 W
2	51° 22.553 N	002° 57.724 W

* www.ukho.gov.uk/copyright

All Positions are expressed in degrees, decimal minutes (DDM) and shall be measured according to the WGS84 Geographic Co-ordinate System

Version control: Netting Permit Byelaw Annexes 1st July 2024 – (for Archive & Reference only)



Annex 2 River Axe (Somerset) Closing Line

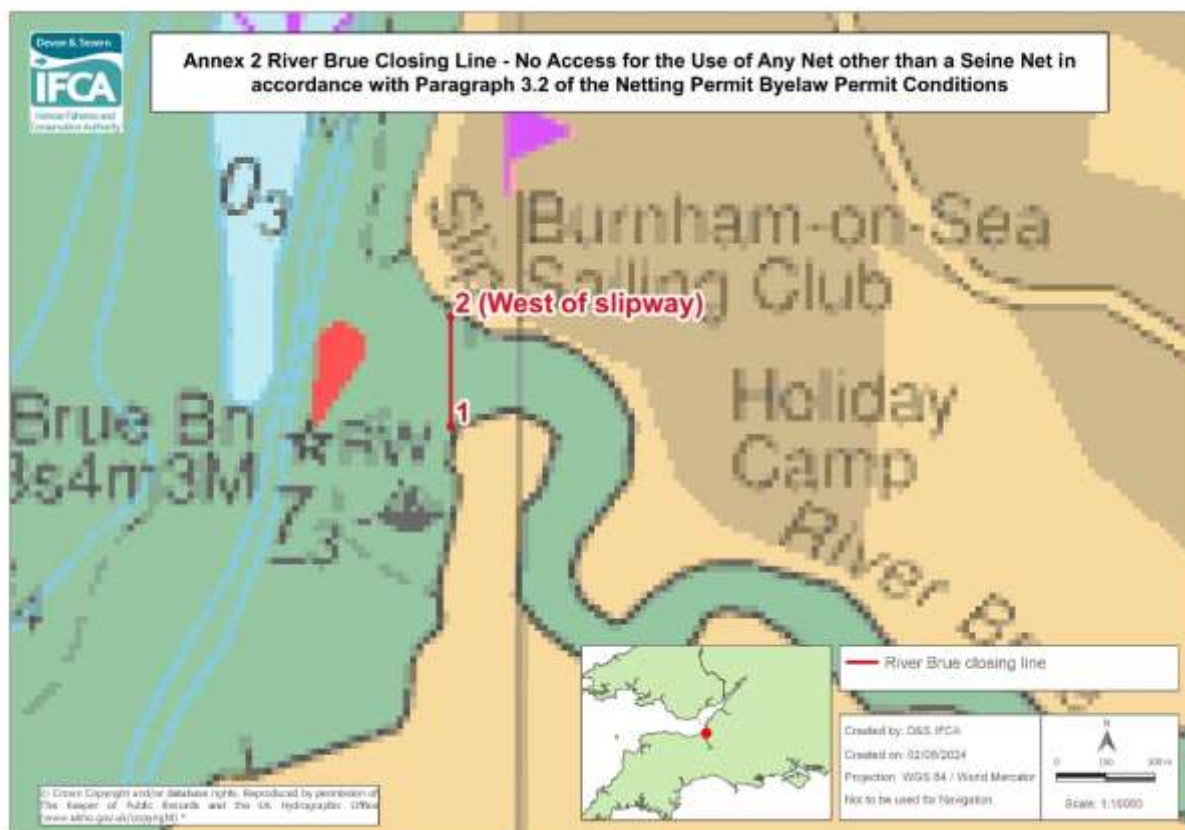
No access for the use of any net other than a seine net in accordance with paragraph 3.2 of the Netting Permit Byelaw Permit Conditions, within the D&S IFCA's District inside of a line drawn from Point 1 to Point 2.

Point Number	Latitude	Longitude
1	51° 19.450 N	003° 00.108 W
2	51° 19.417 N	002° 59.418 W

* www.ukho.gov.uk/copyright

All Positions are expressed in degrees, decimal minutes (DDM) and shall be measured according to the WGS84 Geographic Co-ordinate System

Version control: Netting Permit Byelaw Annexes 1st July 2024 – (for Archive & Reference only)



Annex 2 River Brue Closing Line

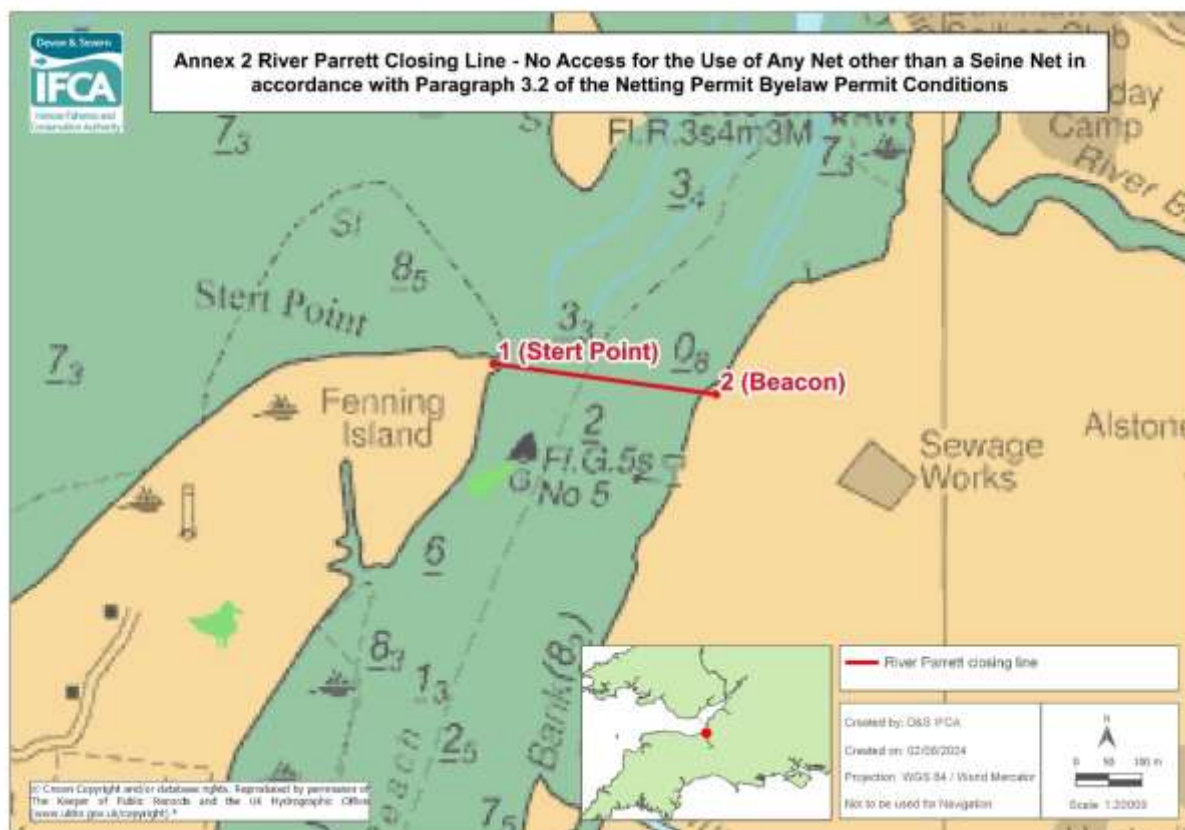
No access for the use of any net other than a seine net in accordance with paragraph 3.2 of the Netting Permit Byelaw Permit Conditions, within the D&S IFCA's District inside of a line drawn from Point 1 to Point 2.

Point Number	Latitude	Longitude
1	51° 13.528 N	003° 00.091 W
2 (West of slipway)	51° 13.618 N	003° 00.091 W

* www.ukho.gov.uk/copyright

All Positions are expressed in degrees, decimal minutes (DDM) and shall be measured according to the WGS84 Geographic Co-ordinate System

Version control: Netting Permit Byelaw Annexes 1st July 2024 – (for Archive & Reference only)



Annex 2 River Parrett Closing Line

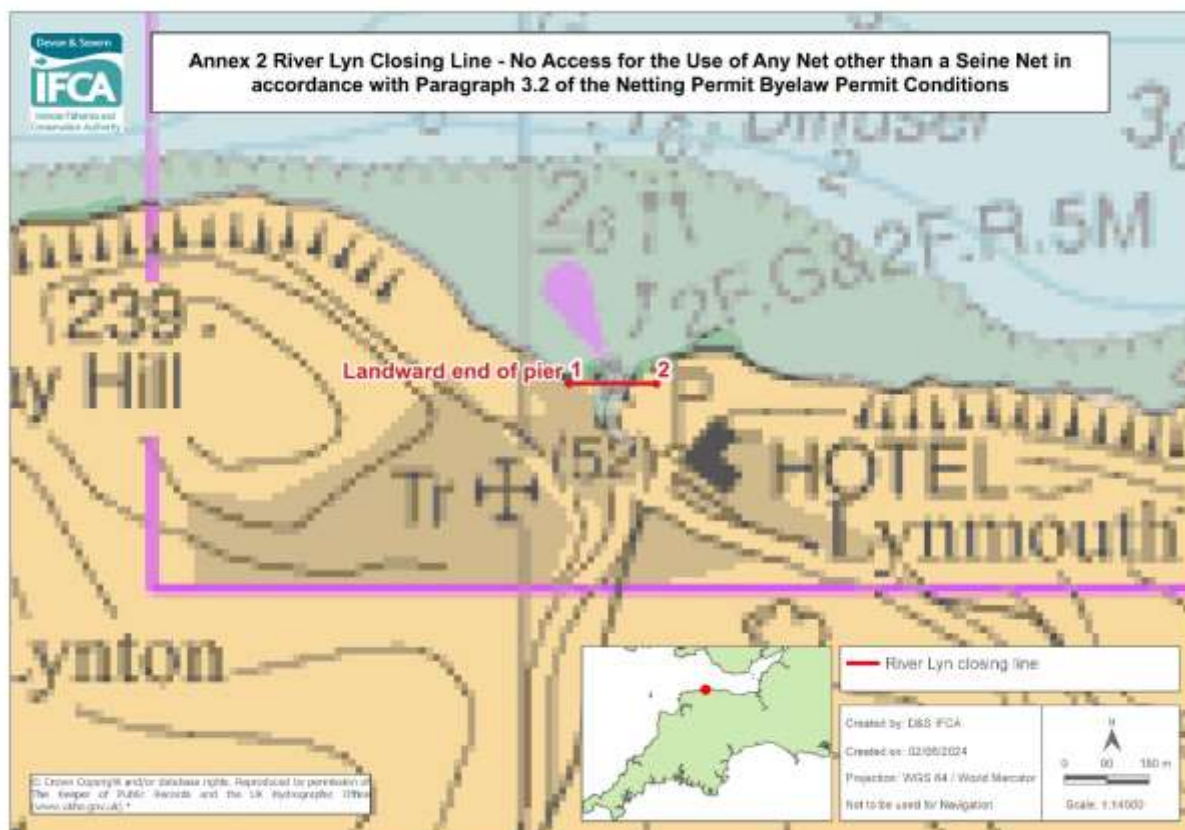
No access for the use of any net other than a seine net in accordance with paragraph 3.2 of the Netting Permit Byelaw Permit Conditions, within the D&S IFCA's District inside of a line drawn from Point 1 to Point 2.

Point Number	Latitude	Longitude
1 (Stert Point)	51° 13.106 N	003° 01.177 W
2 (Beacon)	51° 13.056 N	003° 00.595 W

* www.ukho.gov.uk/copyright

All Positions are expressed in degrees, decimal minutes (DDM) and shall be measured according to the WGS84 Geographic Co-ordinate System

Version control: Netting Permit Byelaw Annexes 1st July 2024 – (for Archive & Reference only)



Annex 2 River Lyn Closing Line

No access for the use of any net other than a seine net in accordance with paragraph 3.2 of the Netting Permit Byelaw Permit Conditions, within the D&S IFCA's District inside of a line drawn from Point 1 to Point 2.

Point Number	Latitude	Longitude
1 (landward end of pier)	51° 13.900 N	003° 49.918 W
2	51° 13.900 N	003° 49.758 W

* www.ukho.gov.uk/copyright

All Positions are expressed in degrees, decimal minutes (DDM) and shall be measured according to the WGS84 Geographic Co-ordinate System

Version control: Netting Permit Byelaw Annexes 1st July 2024 – (for Archive & Reference only)



Annex 2 Rivers Torridge Closing Line

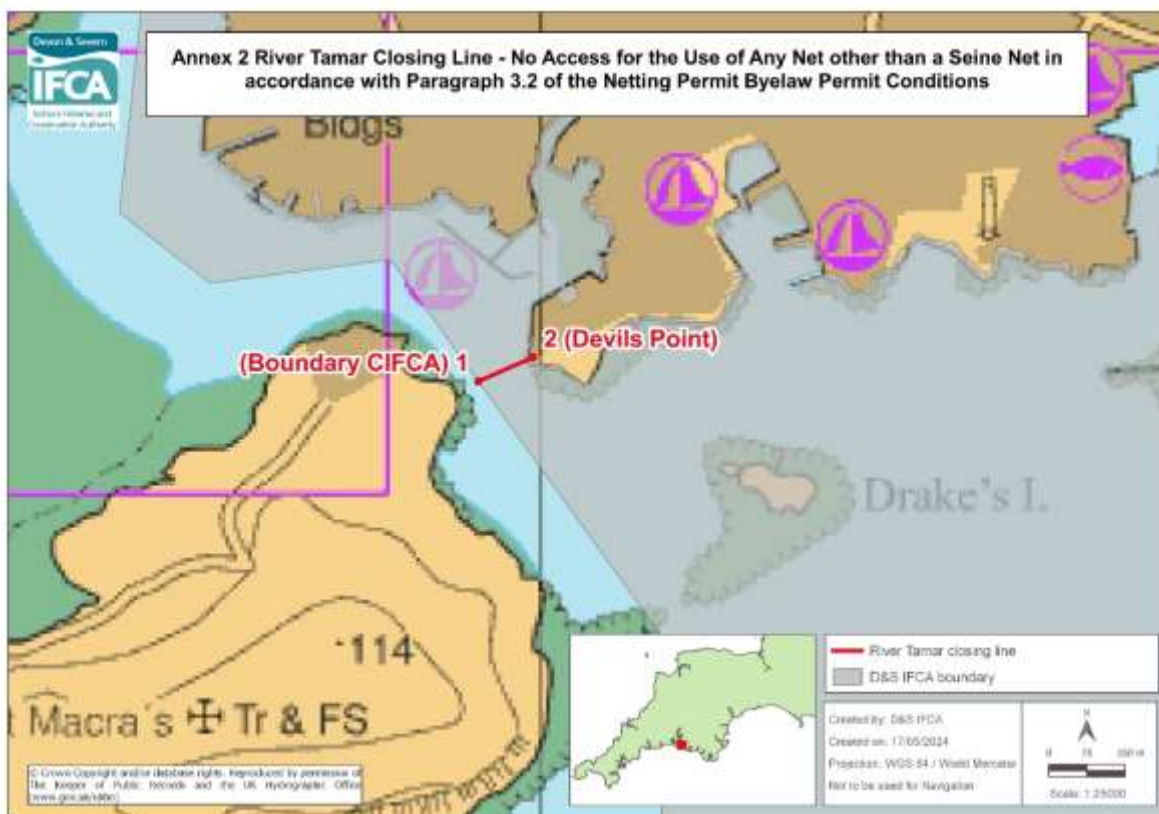
No access for the use of any net other than a seine net in accordance with paragraph 3.2 of the Netting Permit Byelaw Permit Conditions, within the D&S IFCA's District inside of a line drawn from Point 1 to Point 2.

Point Number	Latitude	Longitude
1 (Rock Nose)	51° 02.298 N	004° 15.396 W
2 (Down End)	51° 07.331 N	004° 14.619 W

* www.ukho.gov.uk/copyright

All Positions are expressed in degrees, decimal minutes (DDM) and shall be measured according to the WGS84 Geographic Co-ordinate System

Version control: Netting Permit Byelaw Annexes 1st July 2024 – (for Archive & Reference only)



Annex 2 River Tamar Closing Line

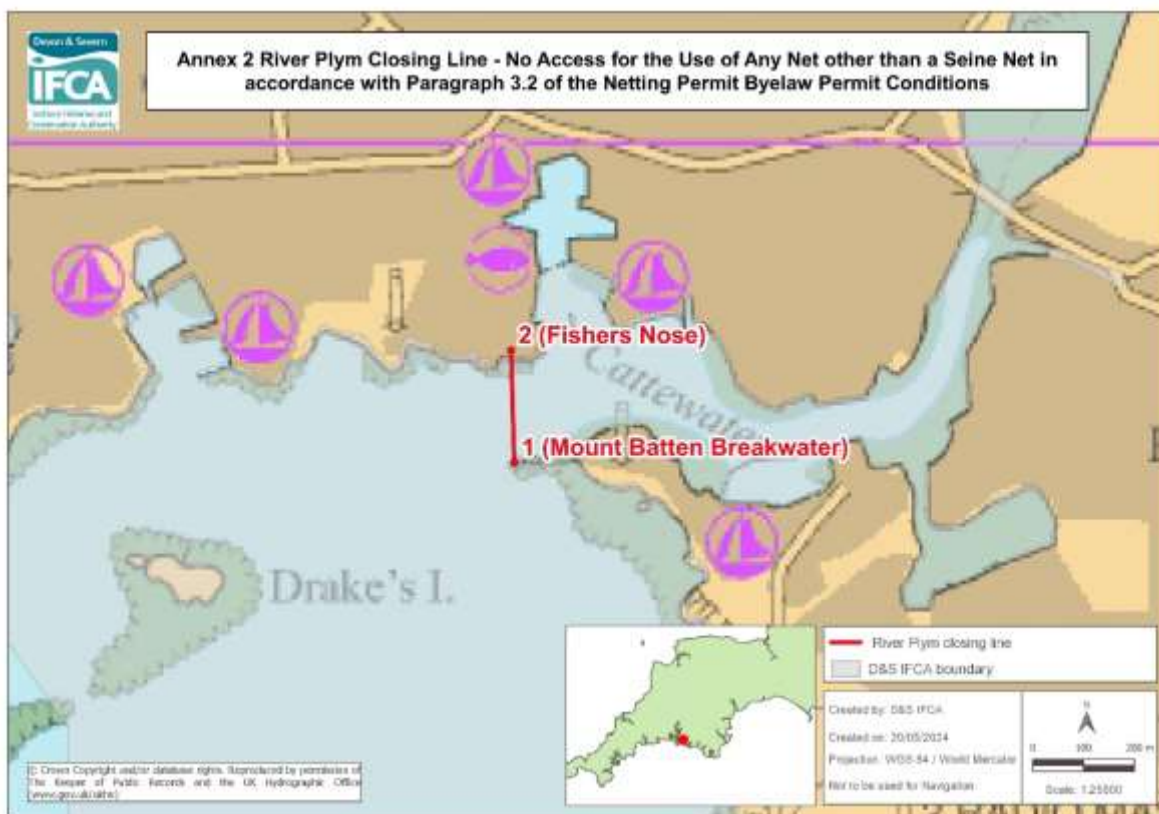
No access for the use of any net other than a seine net in accordance with paragraph 3.2 of the Netting Permit Byelaw Permit Conditions, within the D&S IFCA's District inside of a line drawn from Point 1 to Point 2.

Point Number	Latitude	Longitude
1 (Boundary CIFCA)	50° 21.541 N	004° 10.208 W
2 (Devils Point)	50° 21.592 N	004° 10.026 W

* www.ukho.gov.uk/copyright

All Positions are expressed in degrees, decimal minutes (DDM) and shall be measured according to the WGS84 Geographic Co-ordinate System

Version control: Netting Permit Byelaw Annexes 1st July 2024 – (for Archive & Reference only)



Annex 2 River Plym Closing Line

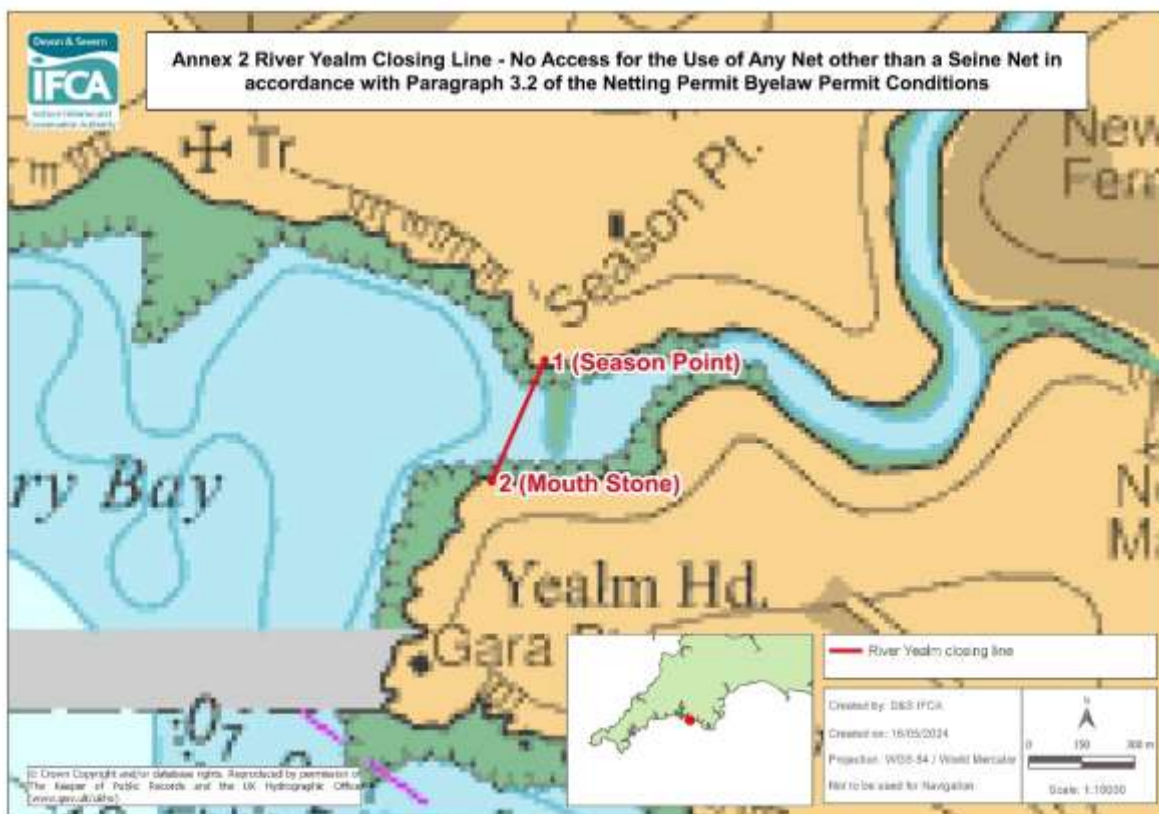
No access for the use of any net other than a seine net in accordance with paragraph 3.2 of the Netting Permit Byelaw Permit Conditions, within the D&S IFCA's District inside of a line drawn from Point 1 to Point 2.

Point Number	Latitude	Longitude
1 (Mount Batten Breakwater)	50° 21.562 N	004° 08.120 W
2 (Fishers Nose)	50° 21.801 N	004° 08.120 W

* www.ukho.gov.uk/copyright

All Positions are expressed in degrees, decimal minutes (DDM) and shall be measured according to the WGS84 Geographic Co-ordinate System

Version control: Netting Permit Byelaw Annexes 1st July 2024 – (for Archive & Reference only)



Annex 2 River Yealm Closing Line

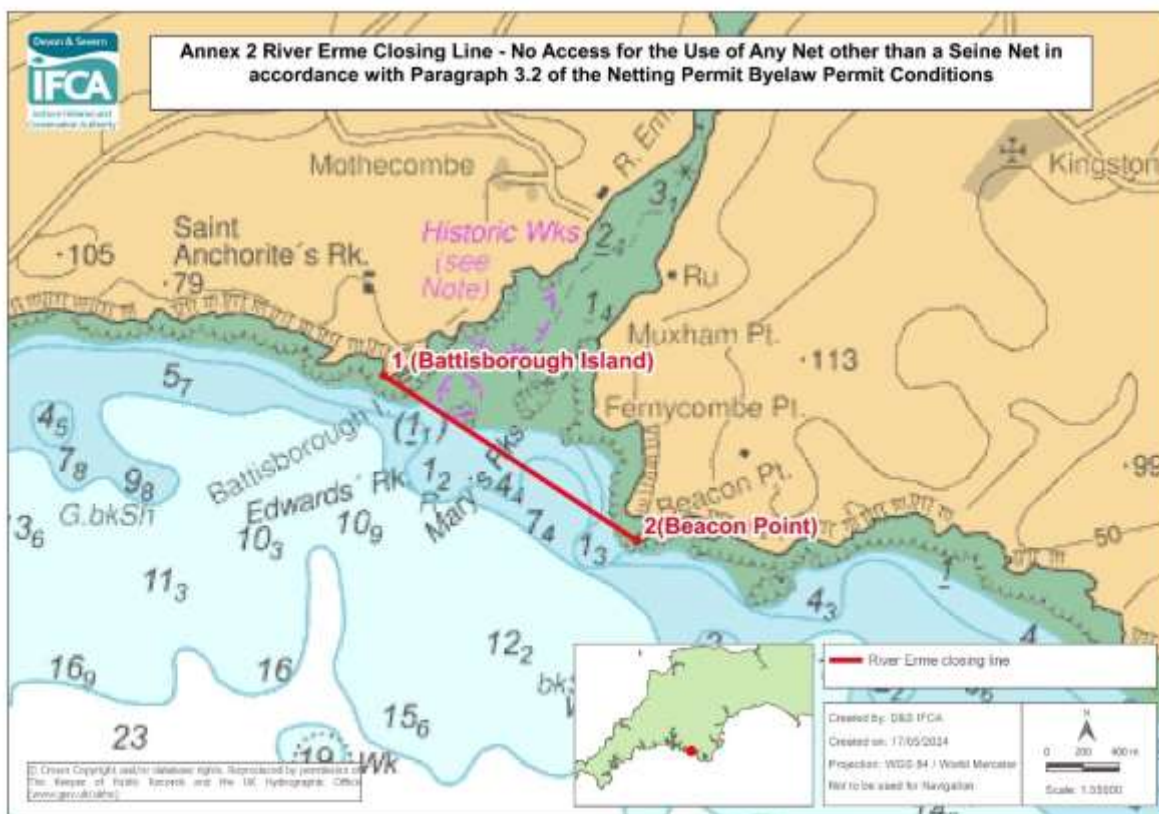
No access for the use of any net other than a seine net in accordance with paragraph 3.2 of the Netting Permit Byelaw Permit Conditions, within the D&S IFCA's District inside of a line drawn from Point 1 to Point 2.

Point Number	Latitude	Longitude
1 (Season Point)	50° 18.736 N	004° 04.148 W
2 (Mouth Stone)	50° 18.550 N	004° 04.275 W

* www.ukho.gov.uk/copyright

All Positions are expressed in degrees, decimal minutes (DDM) and shall be measured according to the WGS84 Geographic Co-ordinate System

Version control: Netting Permit Byelaw Annexes 1st July 2024 – (for Archive & Reference only)



Annex 2 River Erme Closing Line

No access for the use of any net other than a seine net in accordance with paragraph 3.2 of the Netting Permit Byelaw Permit Conditions, within the D&S IFCA's District inside of a line drawn from Point 1 to Point 2.

Point Number	Latitude	Longitude
1 (Battisborough Island)	50° 18.243 N	003° 57.834 W
2 (Beacon Point)	50° 17.750 N	003° 56.657 W

* www.ukho.gov.uk/copyright

All Positions are expressed in degrees, decimal minutes (DDM) and shall be measured according to the WGS84 Geographic Co-ordinate System

Version control: Netting Permit Byelaw Annexes 1st July 2024 – (for Archive & Reference only)



Annex 2 River Avon Closing Lines

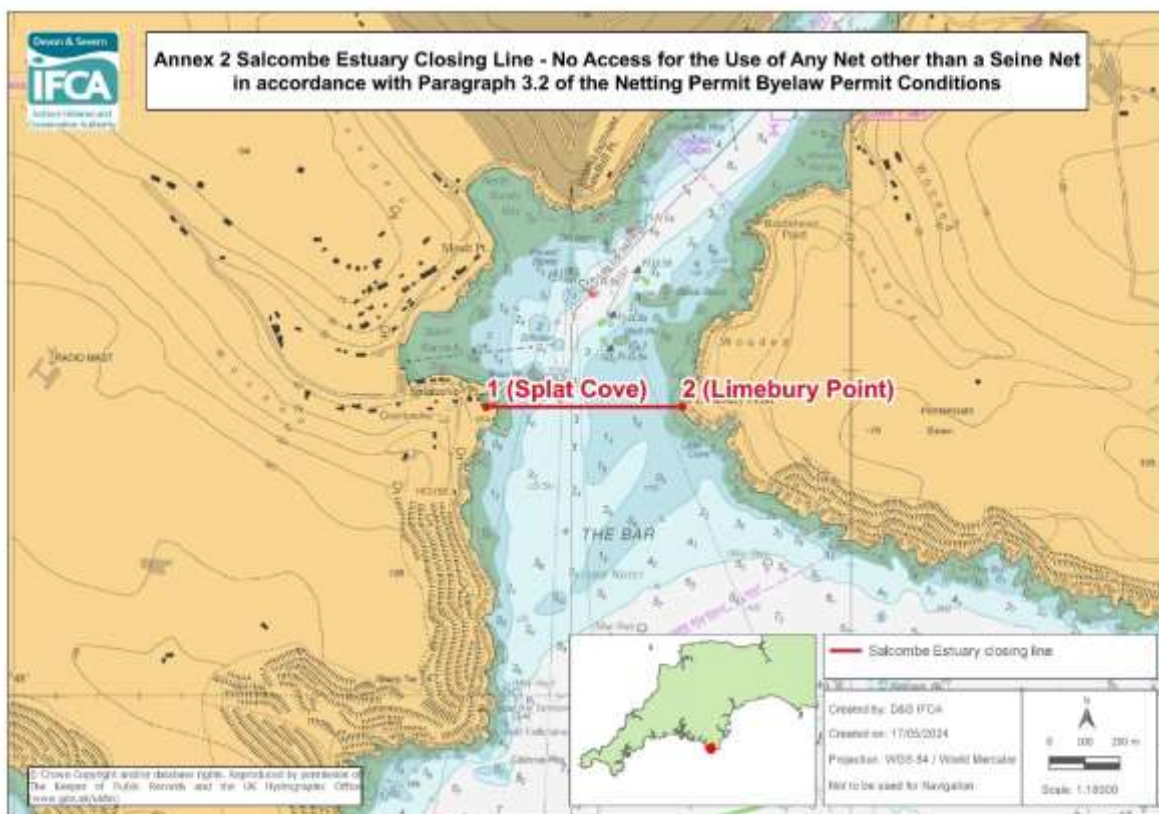
No access for the use of any net other than a seine net in accordance with paragraph 3.2 of the Netting Permit Byelaw Permit Conditions, within the D&S IFCA's District, inside of a line drawn between Point 1 to Point 2 and a line drawn between Point 3 and Point 4.

Point Number	Latitude	Longitude
1 (Warren Point)	50° 17.077 N	003° 53.884 W
2 (Herringcove Point)	50° 16.876 N	003° 54.049 W
3 (Burgh Point)	50° 16.684 N	003° 54.018 W
4 (Bantham Sand)	50° 16.684 N	003° 52.676 W

* www.ukho.gov.uk/copyright

All Positions are expressed in degrees, decimal minutes (DDM) and shall be measured according to the WGS84 Geographic Co-ordinate System

Version control: Netting Permit Byelaw Annexes 1st July 2024 – (for Archive & Reference only)



Annex 2 Salcombe Estuary Closing Line

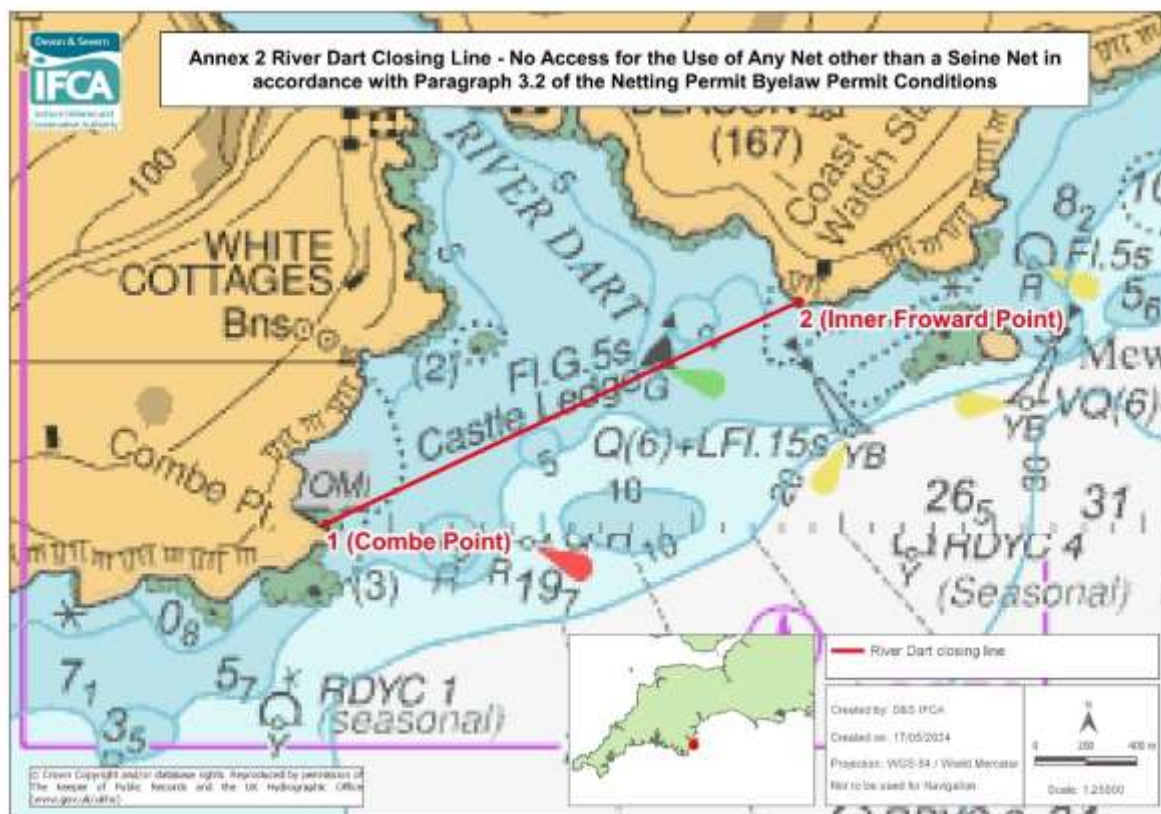
No access for the use of any net other than a seine net in accordance with paragraph 3.2 of the Netting Permit Byelaw Permit Conditions, within the D&S IFCA's District inside of a line drawn from Point 1 to Point 2.

Point Number	Latitude	Longitude
1 (Splat Cove)	50° 13.444 N	003° 46.871 W
2 (Limebury Point)	50° 13.444 N	003° 46.402 W

* www.ukho.gov.uk/copyright

All Positions are expressed in degrees, decimal minutes (DDM) and shall be measured according to the WGS84 Geographic Co-ordinate System

Version control: Netting Permit Byelaw Annexes 1st July 2024 – (for Archive & Reference only)



Annex 2 River Dart Closing Line

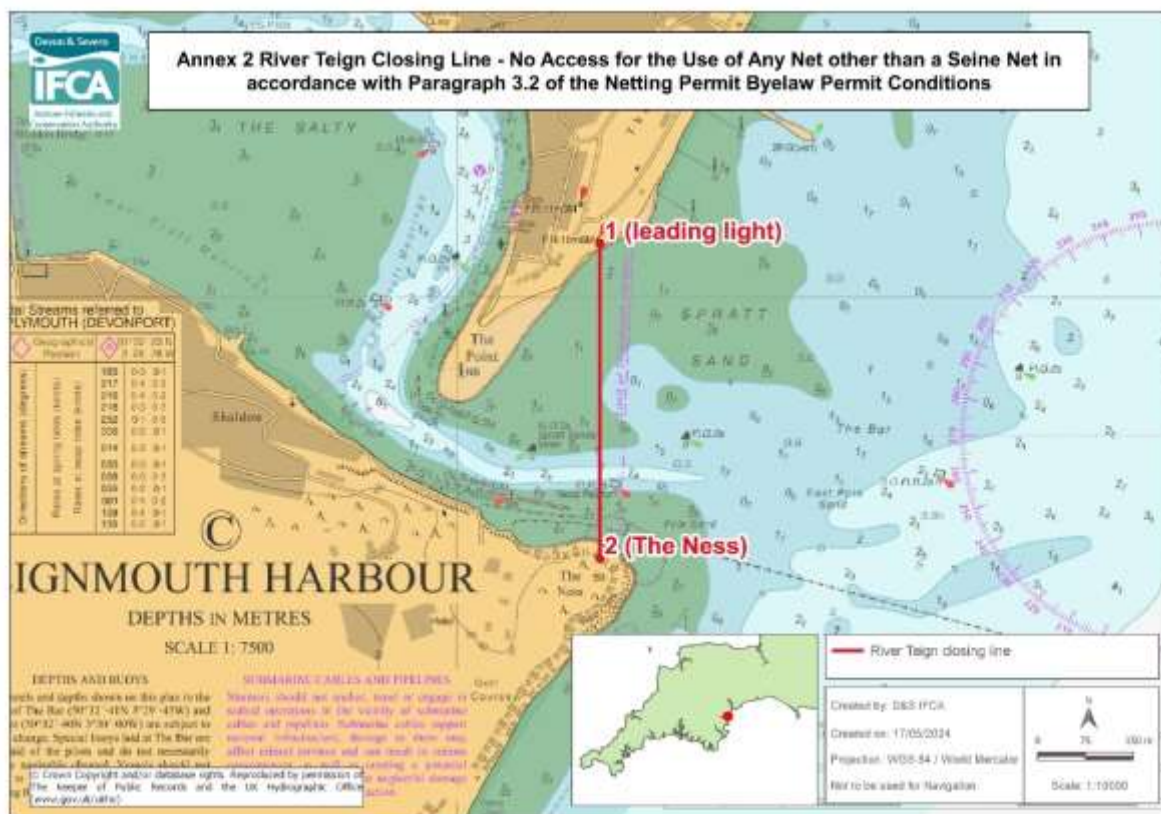
No access for the use of any net other than a seine net in accordance with paragraph 3.2 of the Netting Permit Byelaw Permit Conditions, within the D&S IFCA's District inside of a line drawn from Point 1 to Point 2.

Point Number	Latitude	Longitude
1 (Combe Point)	50° 19.648 N	003° 34.220 W
2 (Inner Froward Point)	50° 20.121 N	003° 32.648 W

* www.ukho.gov.uk/copyright

All Positions are expressed in degrees, decimal minutes (DDM) and shall be measured according to the WGS84 Geographic Co-ordinate System

Version control: Netting Permit Byelaw Annexes 1st July 2024 – (for Archive & Reference only)



Annex 2 River Teign Closing Line

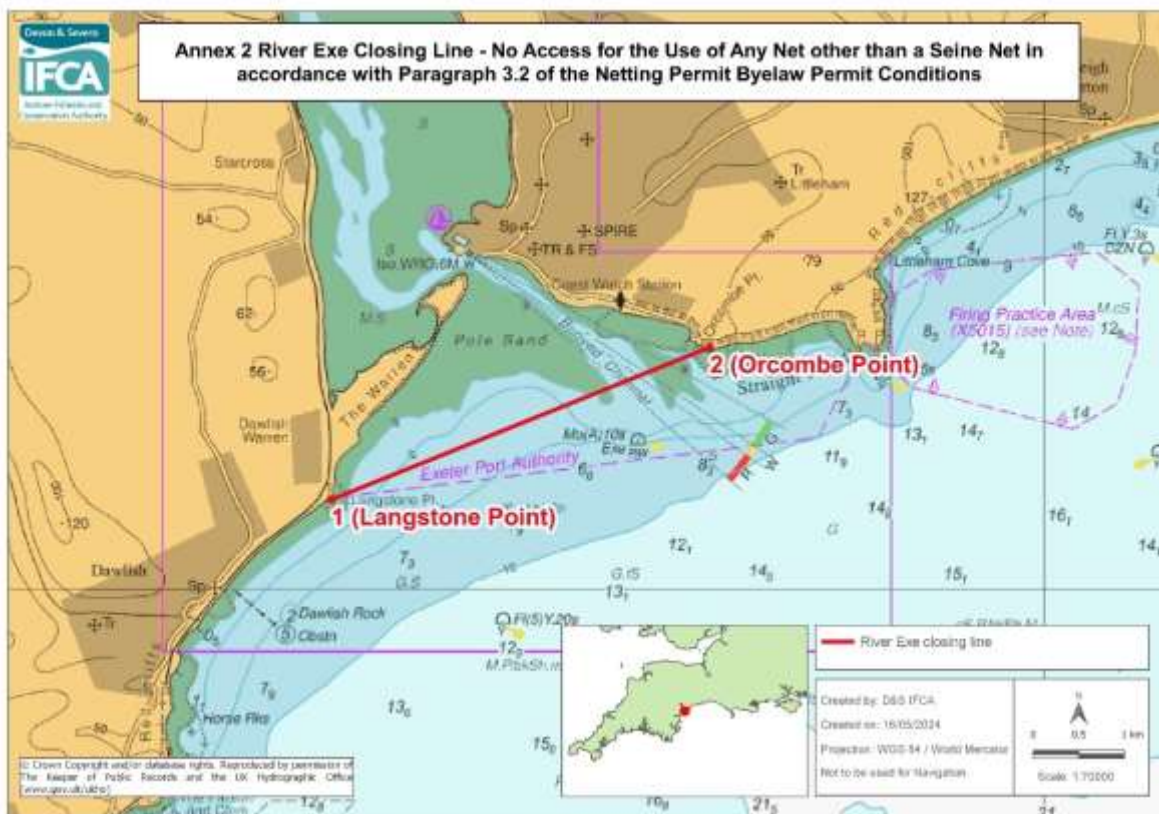
No access for the use of any net other than a seine net in accordance with paragraph 3.2 of the Netting Permit Byelaw Permit Conditions, within the D&S IFCA's District inside of a line drawn from Point 1 to Point 2.

Point Number	Latitude	Longitude
1 (leading light)	50° 32.546 N	003° 29.810 W
2 (The Ness)	50° 32.279 N	003° 29.810 W

* www.ukho.gov.uk/copyright

All Positions are expressed in degrees, decimal minutes (DDM) and shall be measured according to the WGS84 Geographic Co-ordinate System

Version control: Netting Permit Byelaw Annexes 1st July 2024 – (for Archive & Reference only)



Annex 2 River Exe Closing Line

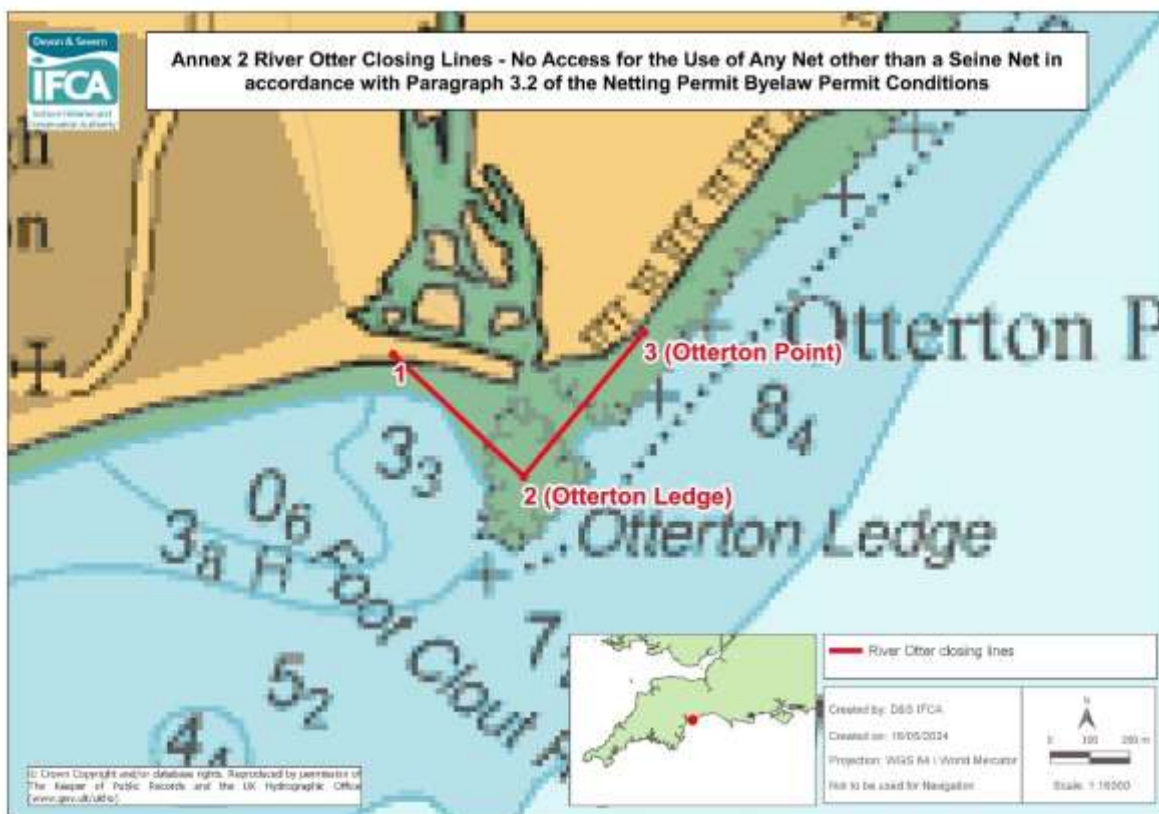
No access for the use of any net other than a seine net in accordance with paragraph 3.2 of the Netting Permit Byelaw Permit Conditions, within the D&S IFCA's District inside of a line drawn from Point 1 to Point 2.

Point Number	Latitude	Longitude
1 (Langstone Point)	50° 35.518 N	003° 26.629 W
2 (Orcombe Point)	50° 36.421 N	003° 23.108 W

* www.ukho.gov.uk/copyright

All Positions are expressed in degrees, decimal minutes (DDM) and shall be measured according to the WGS84 Geographic Co-ordinate System

Version control: Netting Permit Byelaw Annexes 1st July 2024 – (for Archive & Reference only)



Annex 2 River Otter Closing Lines

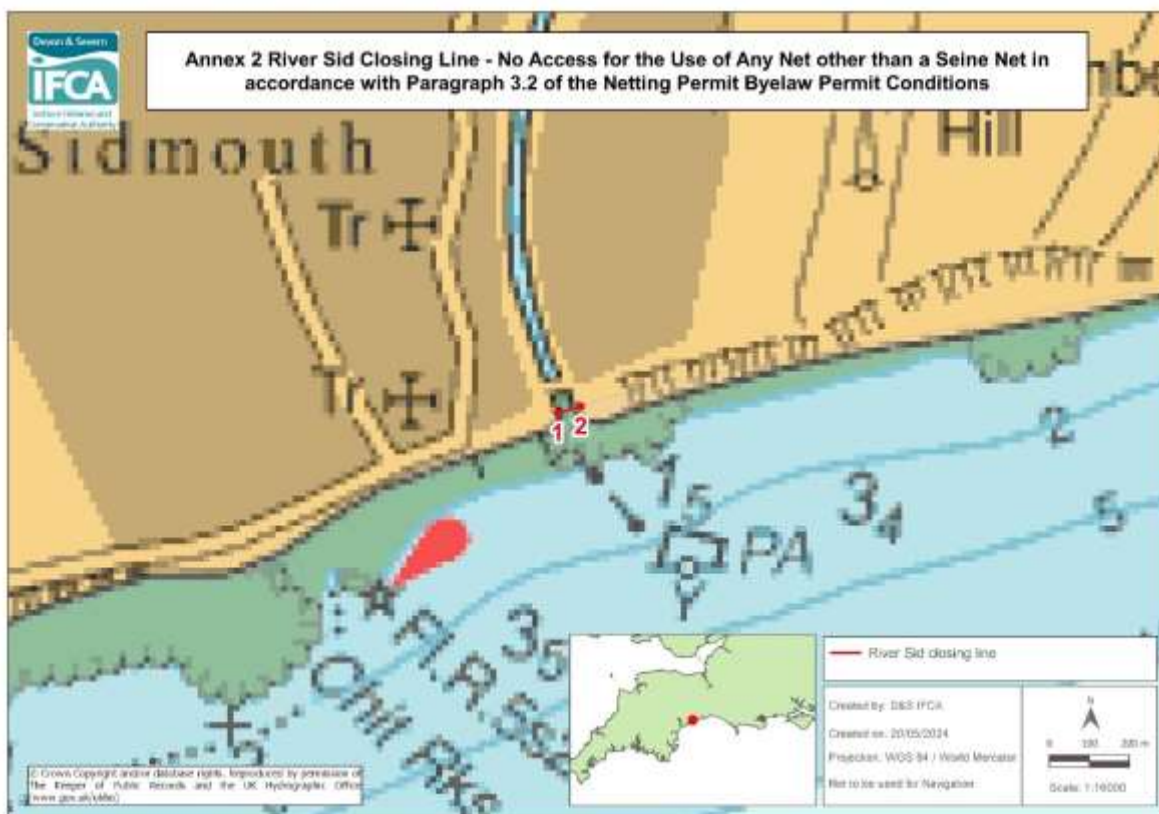
No access for the use of any net other than a seine net in accordance with paragraph 3.2 of the Netting Permit Byelaw Permit Conditions, within the D&S IFCA's District, inside of a line drawn between Point 1 to Point 2 and a line drawn between Point 2 and Point 3.

Point Number	Latitude	Longitude
1	50° 37.791 N	003° 18.676 W
2 (Otterton Ledge)	50° 37.626 N	003° 18.399 W
3 (Otterton Point)	50° 37.821 N	003° 18.143 W

* www.ukho.gov.uk/copyright

All Positions are expressed in degrees, decimal minutes (DDM) and shall be measured according to the WGS84 Geographic Co-ordinate System

Version control: Netting Permit Byelaw Annexes 1st July 2024 – (for Archive & Reference only)



Annex 2 River Sid Closing Line

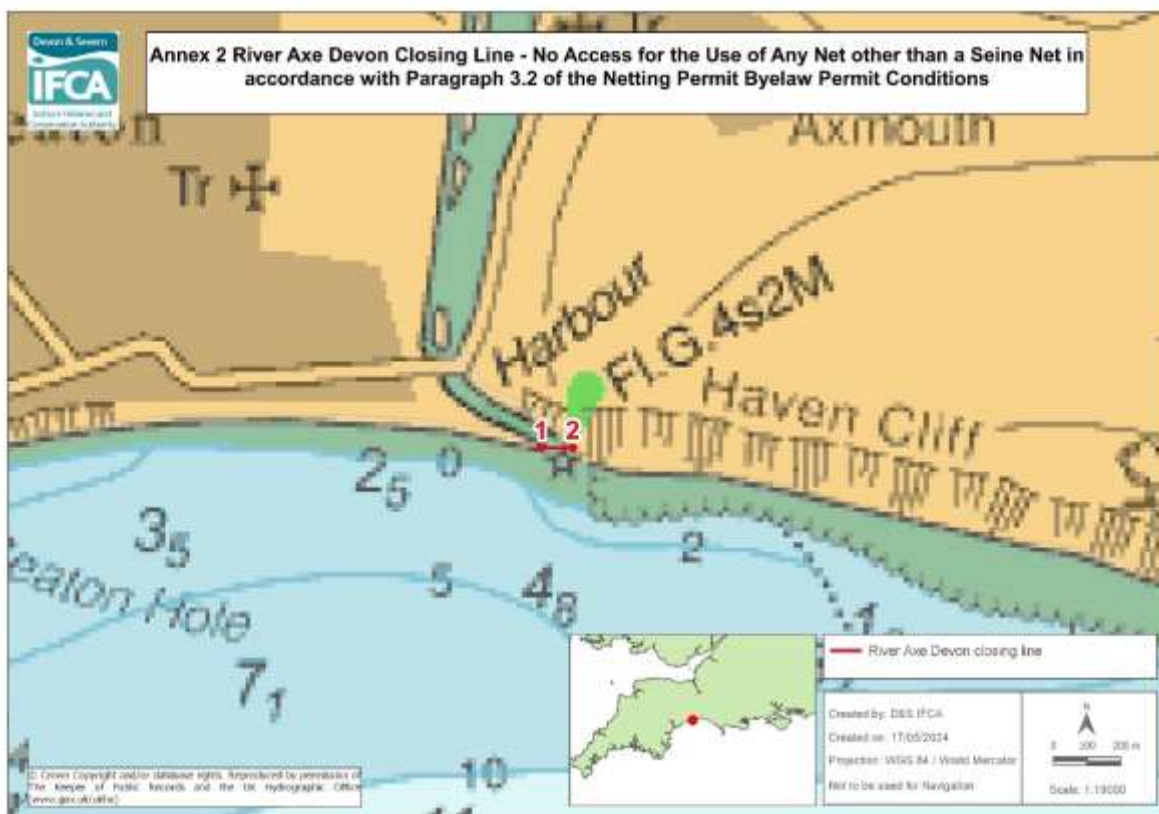
No access for the use of any net other than a seine net in accordance with paragraph 3.2 of the Netting Permit Byelaw Permit Conditions, within the D&S IFCA's District inside of a line drawn from Point 1 to Point 2.

Point Number	Latitude	Longitude
1	50° 40.726 N	003° 14.054 W
2	50° 40.735 N	003° 14.005 W

* www.ukho.gov.uk/copyright

All Positions are expressed in degrees, decimal minutes (DDM) and shall be measured according to the WGS84 Geographic Co-ordinate System

Version control: Netting Permit Byelaw Annexes 1st July 2024 – (for Archive & Reference only)



Annex 2 River Axe Devon Closing Line

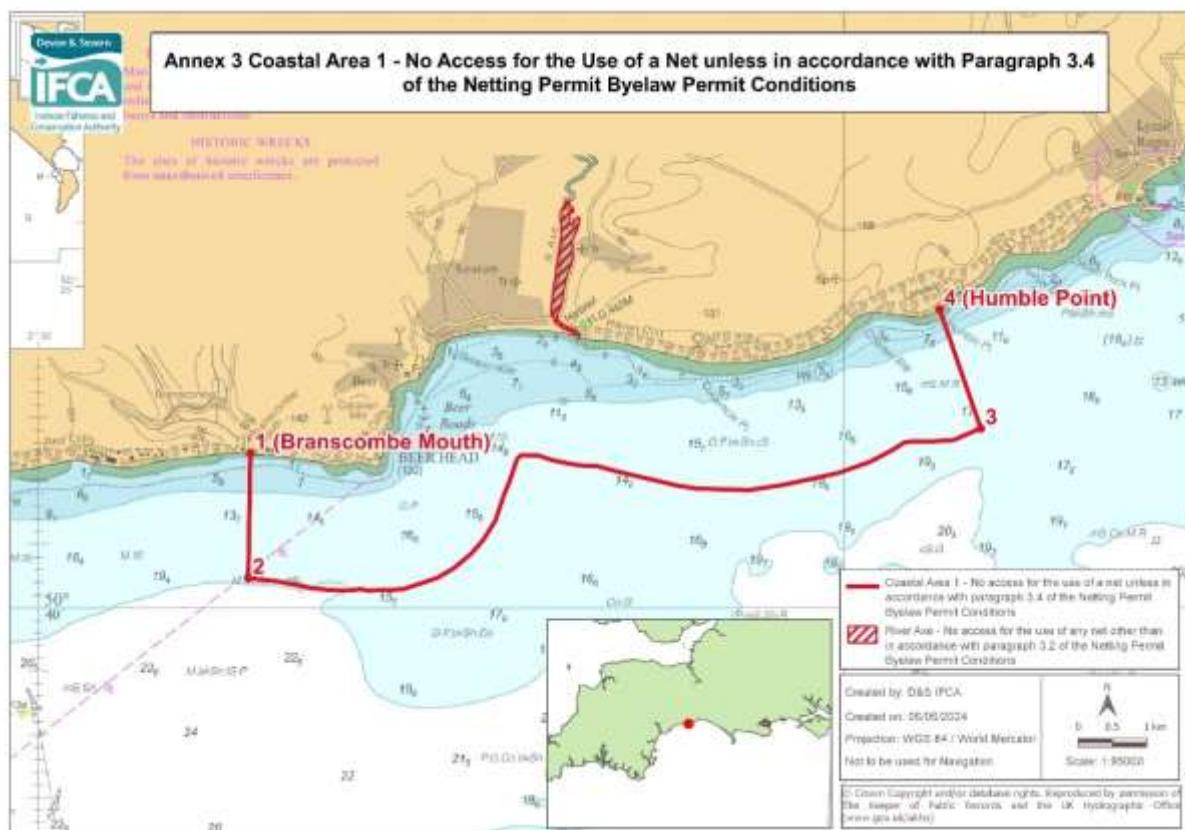
No access for the use of any net other than a seine net in accordance with paragraph 3.2 of the Netting Permit Byelaw Permit Conditions, within the D&S IFCA's District inside of a line drawn from Point 1 to Point 2.

Point Number	Latitude	Longitude
1	50° 42.135 N	003° 03.354 W
2	50° 42.135 N	003° 03.274 W

* www.ukho.gov.uk/copyright

All Positions are expressed in degrees, decimal minutes (DDM) and shall be measured according to the WGS84 Geographic Co-ordinate System

Version control: Netting Permit Byelaw Annexes 1st July 2024 – (for Archive & Reference only)



Annex 3 Coastal Area 1

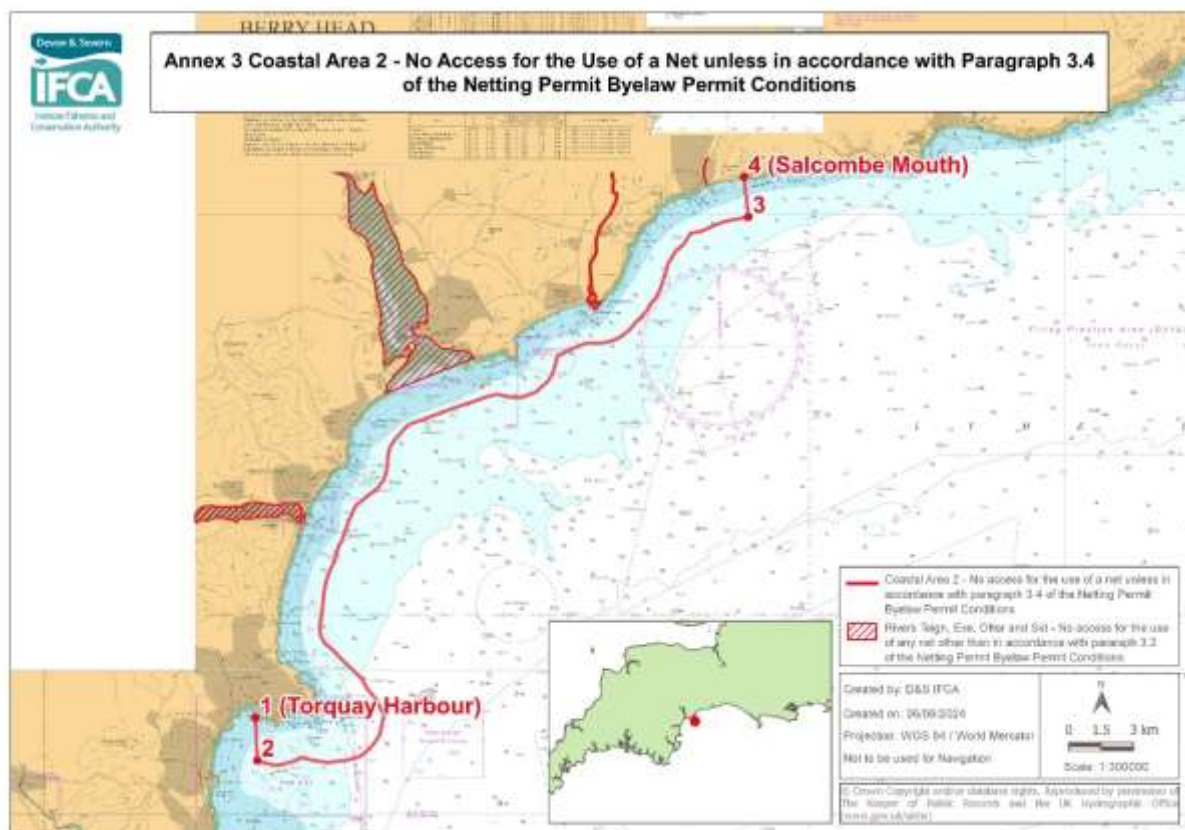
No access for the use of a net unless in accordance with paragraph 3.4 of the Netting Permit Byelaw Permit Conditions, within the D&S IFCA's District inside of a line drawn from Point 1 to Point 4. Between Points 2 and 3 the seaward boundary is one nautical mile seaward of the shore as defined by the lowest astronomical tide.

Point Number	Latitude	Longitude
1 (Branscombe Mouth)	50° 41.205 N	003° 07.374 W
2	50° 40.218 N	003° 07.401 W
3	50° 41.398 N	002° 58.306 W
4 (Humble Point)	50° 42.337 N	002° 58.817 W

* www.ukho.gov.uk/copyright

All Positions are expressed in degrees, decimal minutes (DDM) and shall be measured according to the WGS84 Geographic Co-ordinate System

Version control: Netting Permit Byelaw Annexes 1st July 2024 – (for Archive & Reference only)



Annex 3 Coastal Area 2

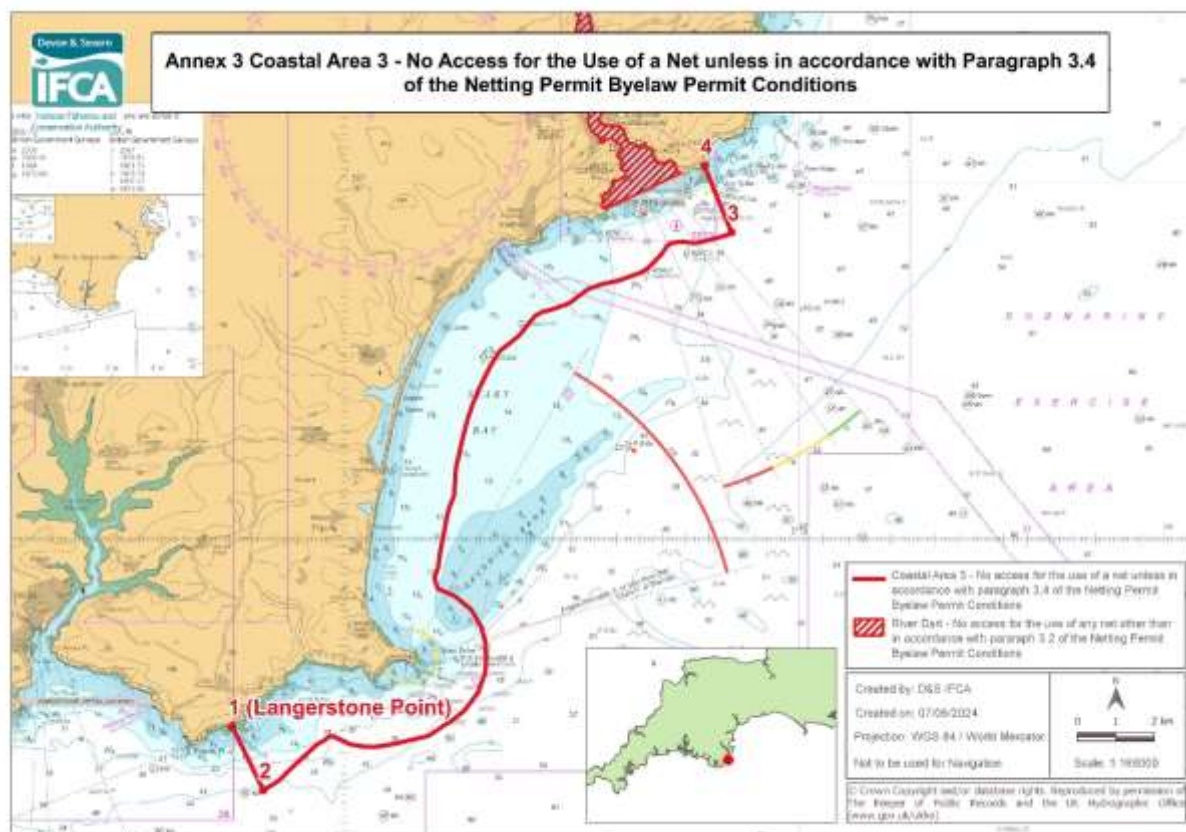
No access for the use of a net unless in accordance with paragraph 3.4 of the Netting Permit Byelaw Permit Conditions, within the D&S IFCA's District inside of a line drawn from Point 1 to Point 4. Between Points 2 and 3 the seaward boundary is one nautical mile seaward of the shore as defined by the lowest astronomical tide.

Point Number	Latitude	Long
1 (Torquay Harbour)	50° 27.413 N	003° 31.719 W
2	50° 26.347 N	003° 31.649 W
3	50° 39.925 N	003° 12.399 W
4 (Salcombe Mouth)	50° 40.920 N	003° 12.571 W

* www.ukho.gov.uk/copyright

All Positions are expressed in degrees, decimal minutes (DDM) and shall be measured according to the WGS84 Geographic Co-ordinate System

Version control: Netting Permit Byelaw Annexes 1st July 2024 – (for Archive & Reference only)



Annex 3 Coastal Area 3

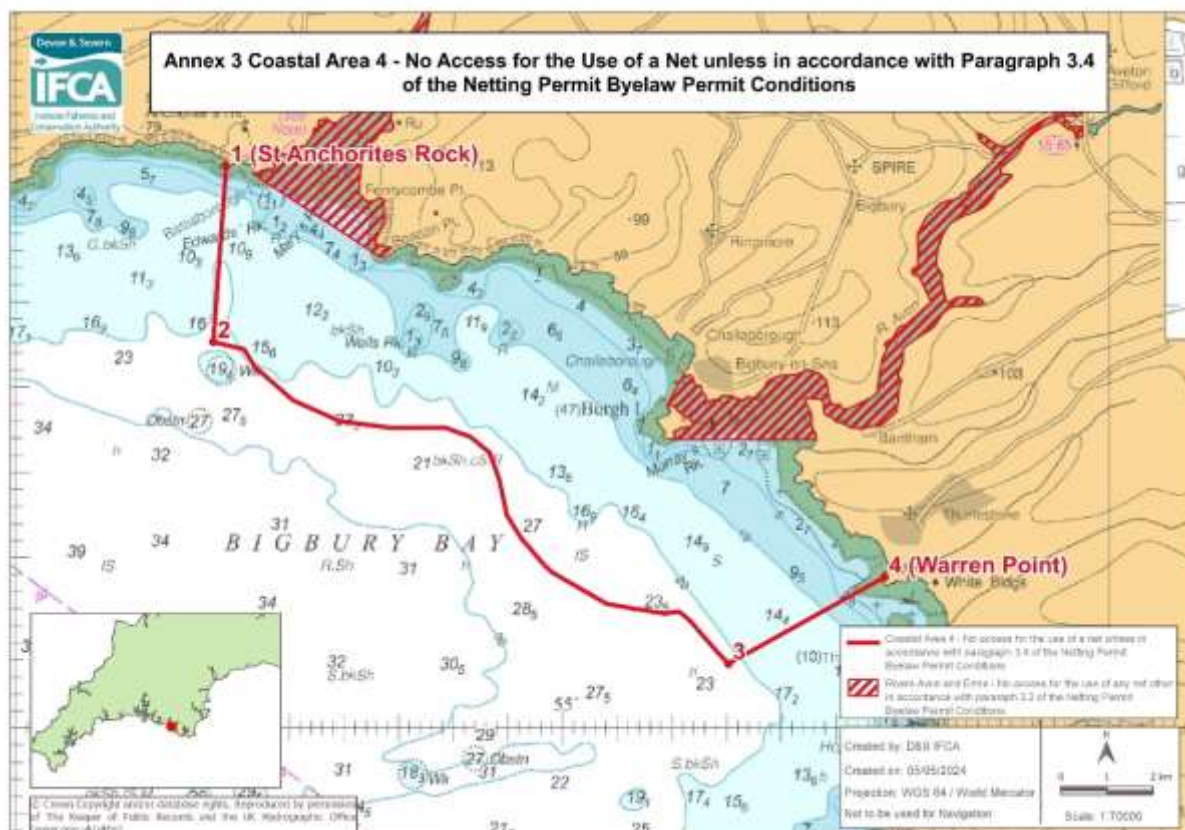
No access for the use of a net unless in accordance with paragraph 3.4 of the Netting Permit Byelaw Permit Conditions, within the D&S IFCA's District inside of a line drawn from Point 1 to Point 4. Between Points 2 and 3 the seaward boundary is one nautical mile seaward of the shore as defined by the lowest astronomical tide.

Point Number	Latitude	Longitude
1 (Langerstone Point)	50° 12.363 N	003° 42.455 W
2	50° 11.464 N	003° 41.769 W
3	50° 19.307 N	003° 31.491 W
4	50° 20.242 N	003° 32.082 W

* www.ukho.gov.uk/copyright

All Positions are expressed in degrees, decimal minutes (DDM) and shall be measured according to the WGS84 Geographic Co-ordinate System

Version control: Netting Permit Byelaw Annexes 1st July 2024 – (for Archive & Reference only)



Annex 3 Coastal Area 4

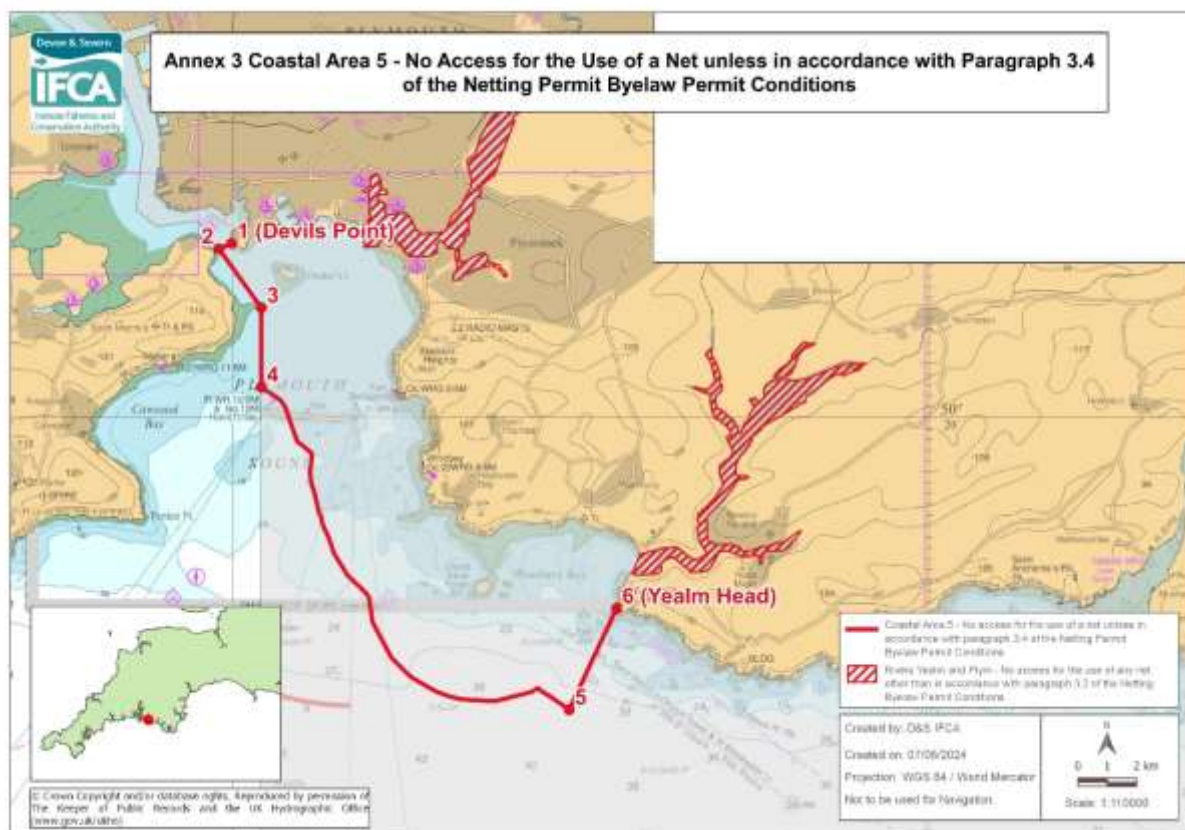
No access for the use of a net unless in accordance with paragraph 3.4 of the Netting Permit Byelaw Permit Conditions, within the D&S IFCA's District inside of a line drawn from Point 1 to Point 4. Between Points 2 and 3 the seaward boundary is one nautical mile seaward of the shore as defined by the lowest astronomical tide.

Point Number	Latitude	Longitude
1 (St Anchorites Rock)	50° 18.289 N	003° 58.077 W
2	50° 17.257 N	003° 58.195 W
3	50° 15.370 N	003° 53.483 W
4 (Warren Point)	50° 15.878 N	003° 52.055 W

* www.ukho.gov.uk/copyright

All Positions are expressed in degrees, decimal minutes (DDM) and shall be measured according to the WGS84 Geographic Co-ordinate System

Version control: Netting Permit Byelaw Annexes 1st July 2024 – (for Archive & Reference only)



Annex 3 Coastal Area 5

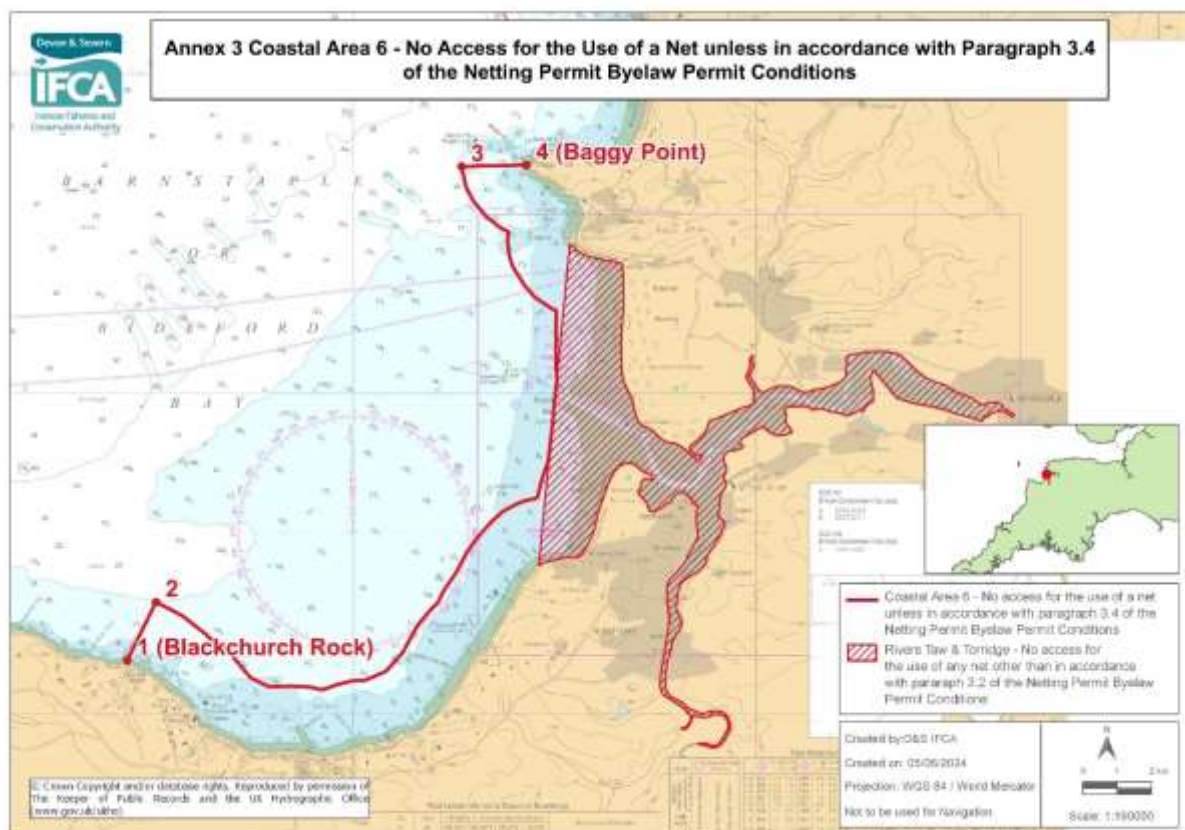
No access for the use of a net unless in accordance with paragraph 3.4 of the Netting Permit Byelaw Permit Conditions, within the D&S IFCA's District inside of a line drawn from Point 1 to Point 6. Between Points 2 and 4 the seaward boundary follows the boundary with CIFCA's District. Between Points 4 and 5 the seaward boundary follows a line drawn one nautical mile seaward of the shore as defined by the lowest astronomical tide within the D&S IFCA's District.

Point Number	Latitude	Longitude
1 (Devils Point)	50° 21.592 N	004° 10.026 W
2	50° 21.541 N	004° 10.208 W
3	50° 21.000 N	004° 09.600 W
4	50° 20.269 N	004° 09.600 W
5	50° 17.300 N	004° 05.176 W
6 (Yealm Head)	50° 18.233 N	004° 04.494 W

* www.ukho.gov.uk/copyright

All Positions are expressed in degrees, decimal minutes (DDM) and shall be measured according to the WGS84 Geographic Co-ordinate System

Version control: Netting Permit Byelaw Annexes 1st July 2024 – (for Archive & Reference only)



Annex 3 Coastal Area 6

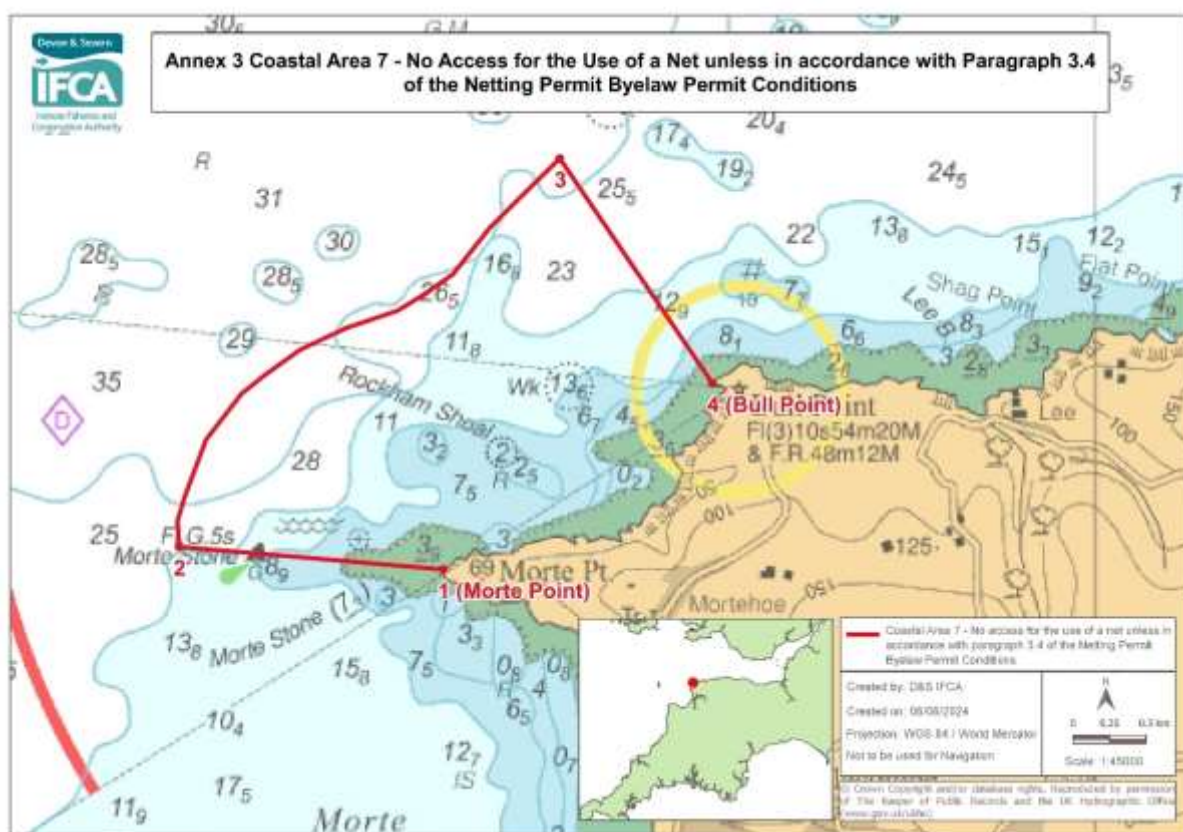
No access for the use of a net unless in accordance with paragraph 3.4 of the Netting Permit Byelaw Permit Conditions, within the D&S IFCA's District inside of a line drawn from Point 1 to Point 4. Between Points 2 and 3 the seaward boundary is one nautical mile seaward of the shore as defined by the lowest astronomical tide.

Point Number	Latitude	Longitude
1(Blackchurch Rock)	51° 00.813 N	004° 25.616 W
2	51° 01.727 N	004° 24.899 W
3	51° 08.540 N	004° 17.313 W
4 (Baggy Point)	51° 08.564 N	004° 15.702 W

* www.ukho.gov.uk/copyright

All Positions are expressed in degrees, decimal minutes (DDM) and shall be measured according to the WGS84 Geographic Co-ordinate System

Version control: Netting Permit Byelaw Annexes 1st July 2024 – (for Archive & Reference only)



Annex 3 Coastal Area 7

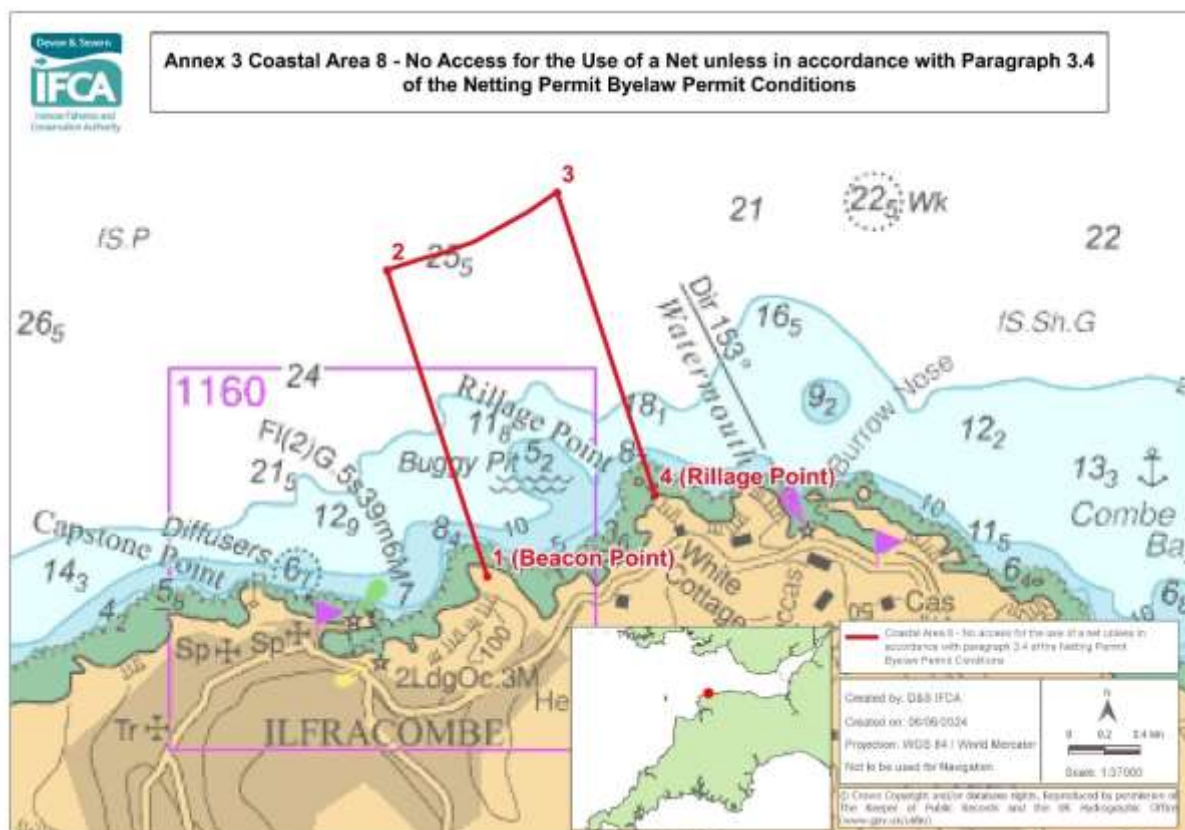
No access for the use of a net unless in accordance with paragraph 3.4 of the Netting Permit Byelaw Permit Conditions, within the D&S IFCA's District inside of a line drawn from Point 1 to Point 4. Between Points 2 and 3 the seaward boundary is one nautical mile seaward of the shore as defined by the lowest astronomical tide.

Point Number	Latitude	Longitude
1 (Morte Point)	51° 11.271 N	004° 13.833 W
2	51° 11.355 N	004° 15.387 W
3	51° 12.790 N	004° 13.148 W
4 (Bull Point)	51° 11.959 N	004° 12.250 W

* www.ukho.gov.uk/copyright

All Positions are expressed in degrees, decimal minutes (DDM) and shall be measured according to the WGS84 Geographic Co-ordinate System

Version control: Netting Permit Byelaw Annexes 1st July 2024 – (for Archive & Reference only)



Annex 3 Coastal Area 8

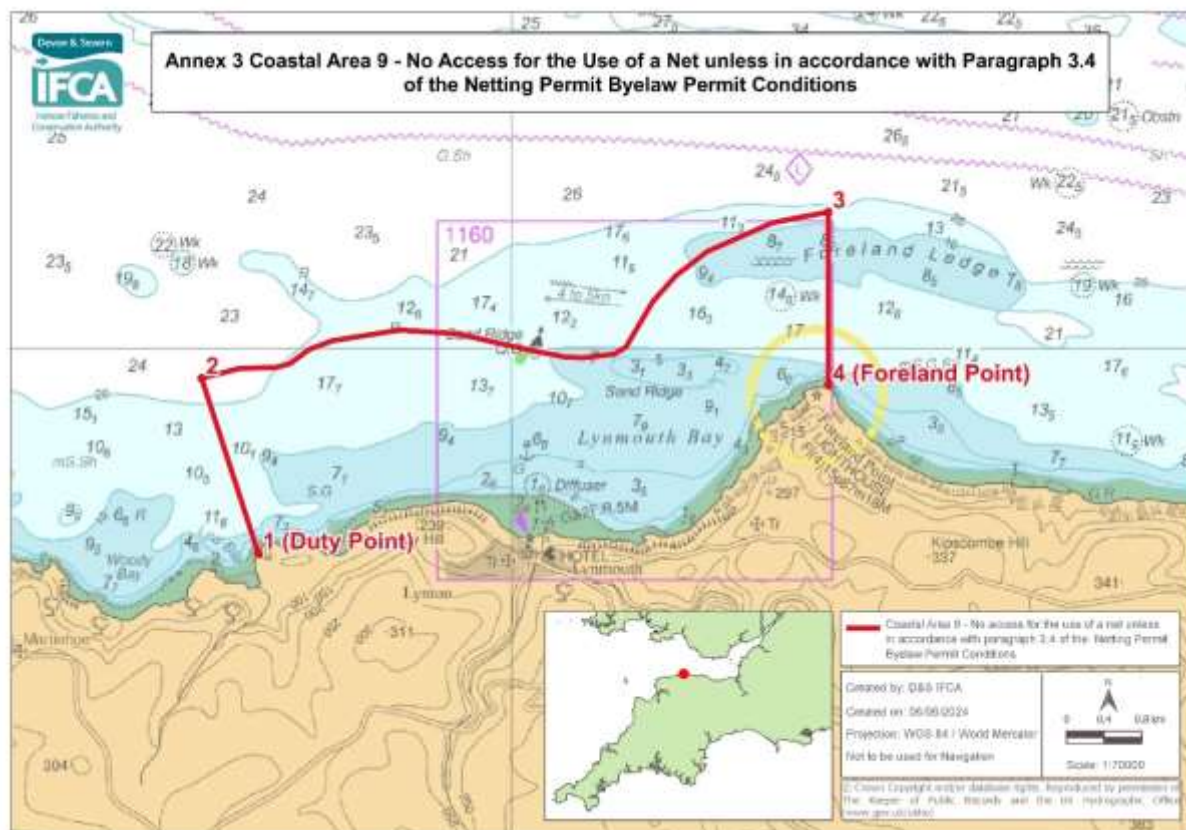
No access for the use of a net unless in accordance with paragraph 3.4 of the Netting Permit Byelaw Permit Conditions, within the D&S IFCA's District inside of a line drawn from Point 1 to Point 4. Between Points 2 and 3 the seaward boundary is one nautical mile seaward of the shore as defined by the lowest astronomical tide.

Point Number	Latitude	Longitude
1 (Beacon Point)	51° 12.791'N	004° 06.134'W
2	51° 13.720'N	004° 06.618'W
3	51° 13.956'N	004° 05.796'W
4 (Rillage Point)	51° 13.038'N	004° 05.323'W

* www.ukho.gov.uk/copyright

All Positions are expressed in degrees, decimal minutes (DDM) and shall be measured according to the WGS84 Geographic Co-ordinate System

Version control: Netting Permit Byelaw Annexes 1st July 2024 – (for Archive & Reference only)



Annex 3 Coastal Area 9

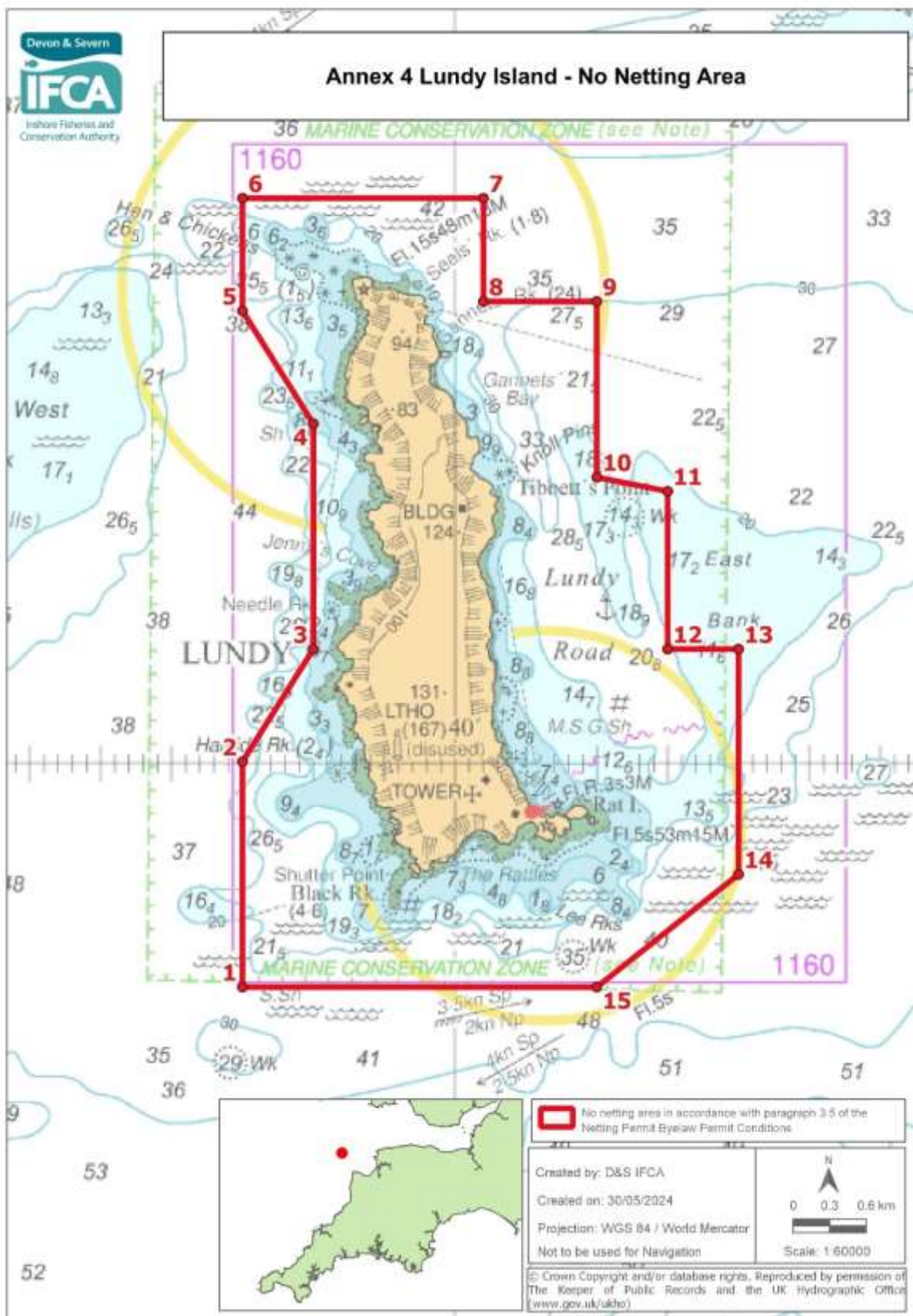
No access for the use of a net unless in accordance with paragraph 3.4 of the Netting Permit Byelaw Permit Conditions, within the D&S IFCA's District inside of a line drawn from Point 1 to Point 4. Between Points 2 and 3 the seaward boundary is one nautical mile seaward of the shore as defined by the lowest astronomical tide.

Point Number	Latitude	Longitude
1 (Duty Point)	51° 13.819 N	003° 52.319 W
2	51° 14.823 N	003° 52.837 W
3	51° 15.777 N	003° 47.104 W
4 (Foreland Point)	51° 14.783 N	003° 47.104 W

* www.ukho.gov.uk/copyright

All Positions are expressed in degrees, decimal minutes (DDM) and shall be measured according to the WGS84 Geographic Co-ordinate System

Version control: Netting Permit Byelaw Annexes 1st July 2024 – (for Archive & Reference only)



* www.ukho.gov.uk/copyright

All Positions are expressed in degrees, decimal minutes (DDM) and shall be measured according to the WGS84 Geographic Co-ordinate System

Version control: Netting Permit Byelaw Annexes 1st July 2024 – (for Archive & Reference only)

Annex 4 Lundy Island – No Netting Zone

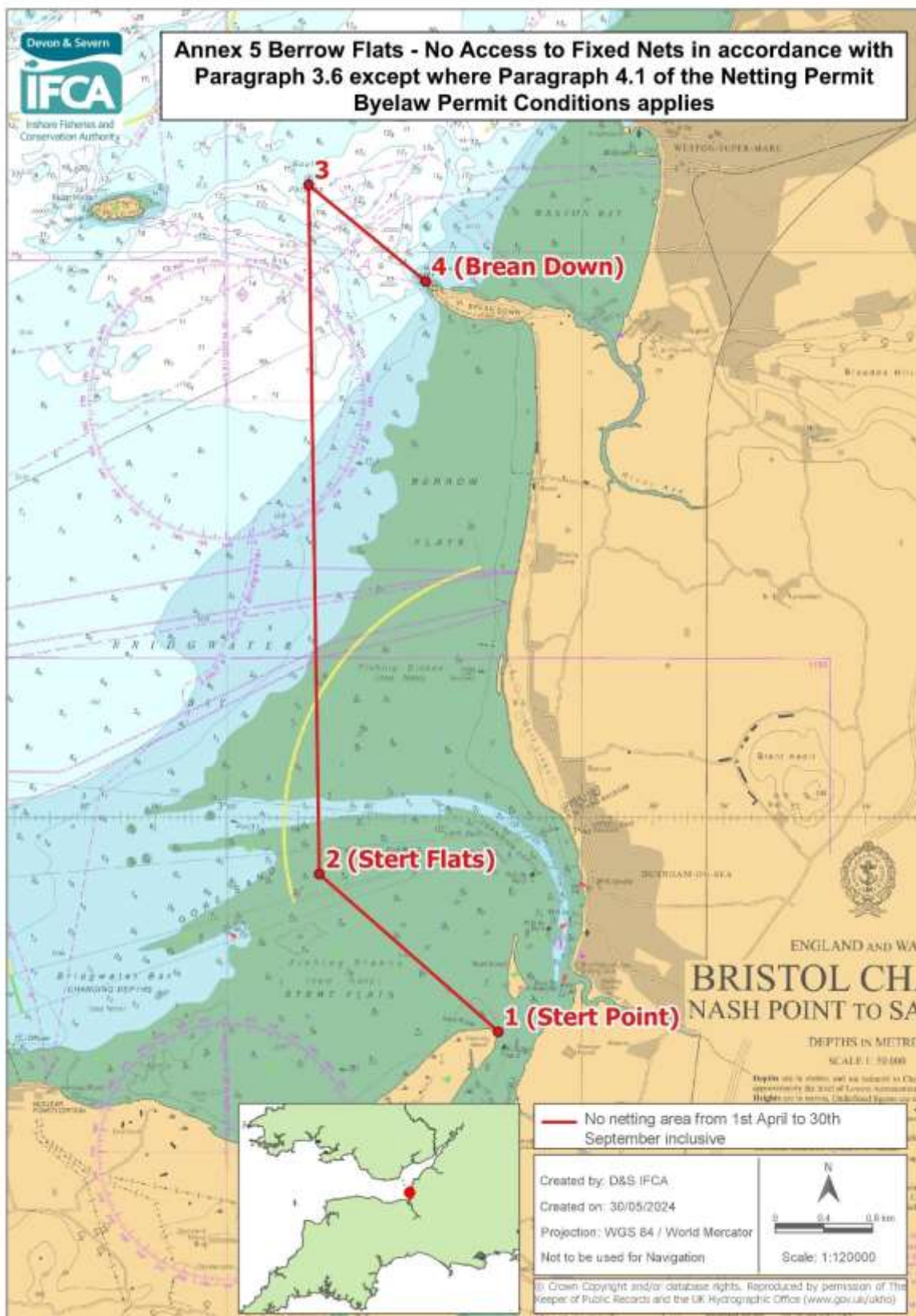
No access for the use of any net in accordance with paragraph 3.5 of the Netting Permit Byelaw Permit Conditions, within the D&S IFCA's District outlined by the following points plotted sequentially from Point 1 to Point 15, then returning to Point 1.

Point Number	Latitude	Longitude
1	51° 09.000 N	004° 41.500 W
2	51° 10.000 N	004° 41.500 W
3	51° 10.500 N	004° 41.000 W
4	51° 11.500 N	004° 41.000 W
5	51° 12.000 N	004° 41.500 W
6	51° 12.500 N	004° 41.500 W
7	51° 12.500 N	004° 39.800 W
8	51° 12.042 N	004° 39.800 W
9	51° 12.042 N	004° 39.000 W
10	51° 11.262 N	004° 39.000 W
11	51° 11.200 N	004° 38.500 W
12	51° 10.500 N	004° 38.500 W
13	51° 10.500 N	004° 38.000 W
14	51° 09.500 N	004° 38.000 W
15	51° 09.000 N	004° 39.000 W

* www.ukho.gov.uk/copyright

All Positions are expressed in degrees, decimal minutes (DDM) and shall be measured according to the WGS84 Geographic Co-ordinate System

Version control: Netting Permit Byelaw Annexes 1st July 2024 – (for Archive & Reference only)



* www.ukho.gov.uk/copyright

All Positions are expressed in degrees, decimal minutes (DDM) and shall be measured according to the WGS84 Geographic Co-ordinate System

Version control: Netting Permit Byelaw Annexes 1st July 2024 – (for Archive & Reference only)

Annex 5 Berrow Flats

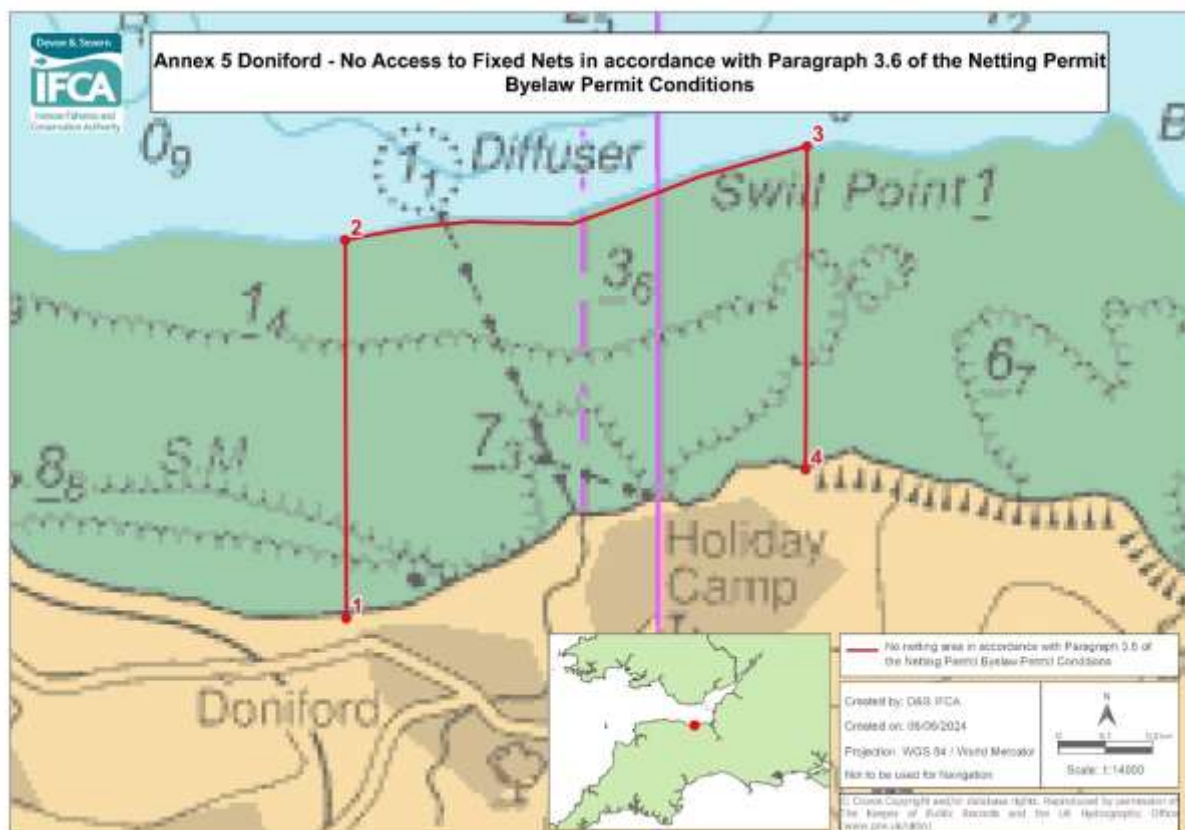
No access to fixed nets in accordance with paragraph 3.6 of the Netting Permit Byelaw Permit Conditions (except where paragraph 4.1 of the Netting Permit Byelaw Permit Conditions applies) within the D&S IFCA's District outlined by the following points plotted sequentially from Point 1 to Point 4, then returning to Point 1. The landward boundary follows Mean High Water.

Point Number	Latitude	Longitude
1 (Stert Point)	51° 13.102 N	003° 01.177 W
2 (Stert Flats)	51° 14.500 N	003° 03.700 W
3	51° 20.600 N	003° 03.850 W
4 (Brean Down)	51° 19.747 N	003° 02.199 W

* www.ukho.gov.uk/copyright

All Positions are expressed in degrees, decimal minutes (DDM) and shall be measured according to the WGS84 Geographic Co-ordinate System

Version control: Netting Permit Byelaw Annexes 1st July 2024 – (for Archive & Reference only)



Annex 5 Doniford

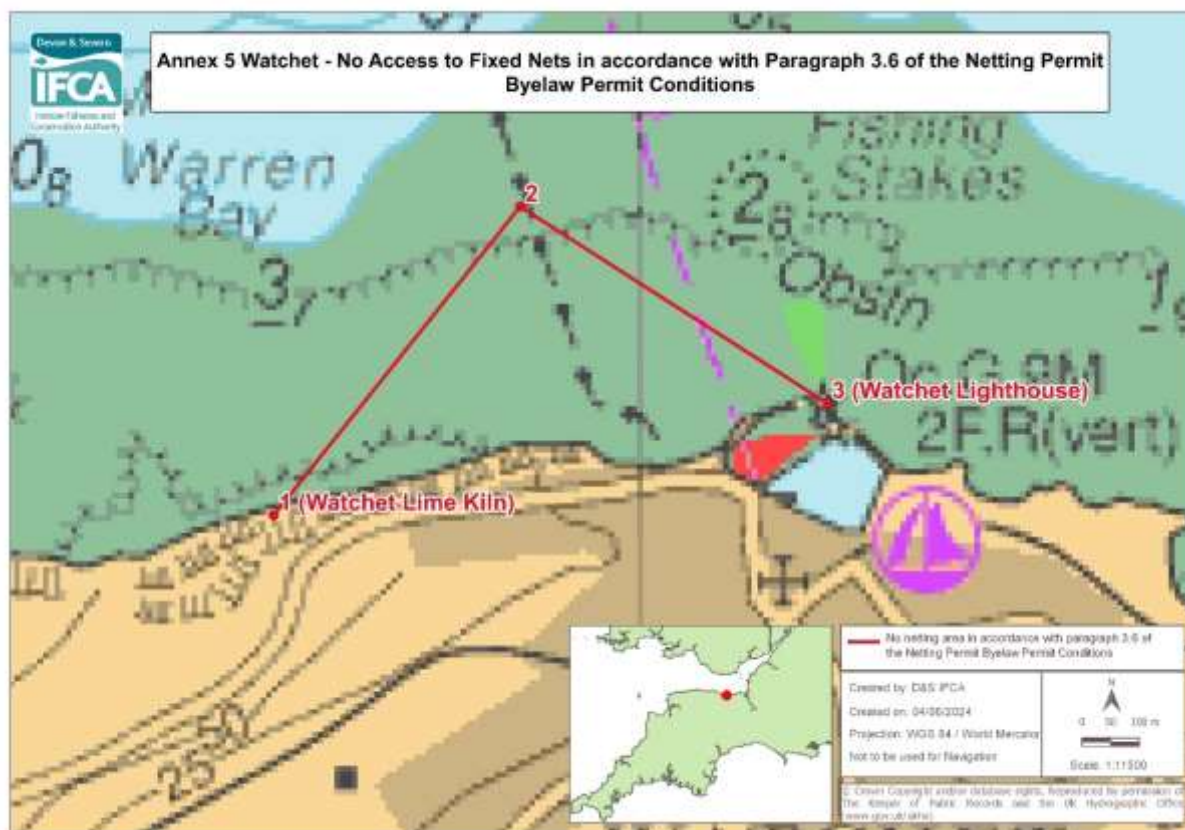
No access to fixed nets in accordance with paragraph 3.6 of the Netting Permit Byelaw Permit Conditions, within the D&S IFCA's District outlined by the following points plotted sequentially from Point 1 to Point 4, then returning to Point 1. The landward boundary follows Mean High Water.

Point Number	Latitude	Longitude
1	51° 10.764 N	003° 18.570 W
2	51° 11.199 N	003° 18.572 W
3	51° 11.307 N	003° 17.727 W
4	51° 10.935 N	003° 17.730 W

* www.ukho.gov.uk/copyright

All Positions are expressed in degrees, decimal minutes (DDM) and shall be measured according to the WGS84 Geographic Co-ordinate System

Version control: Netting Permit Byelaw Annexes 1st July 2024 – (for Archive & Reference only)



Annex 5 Watchet

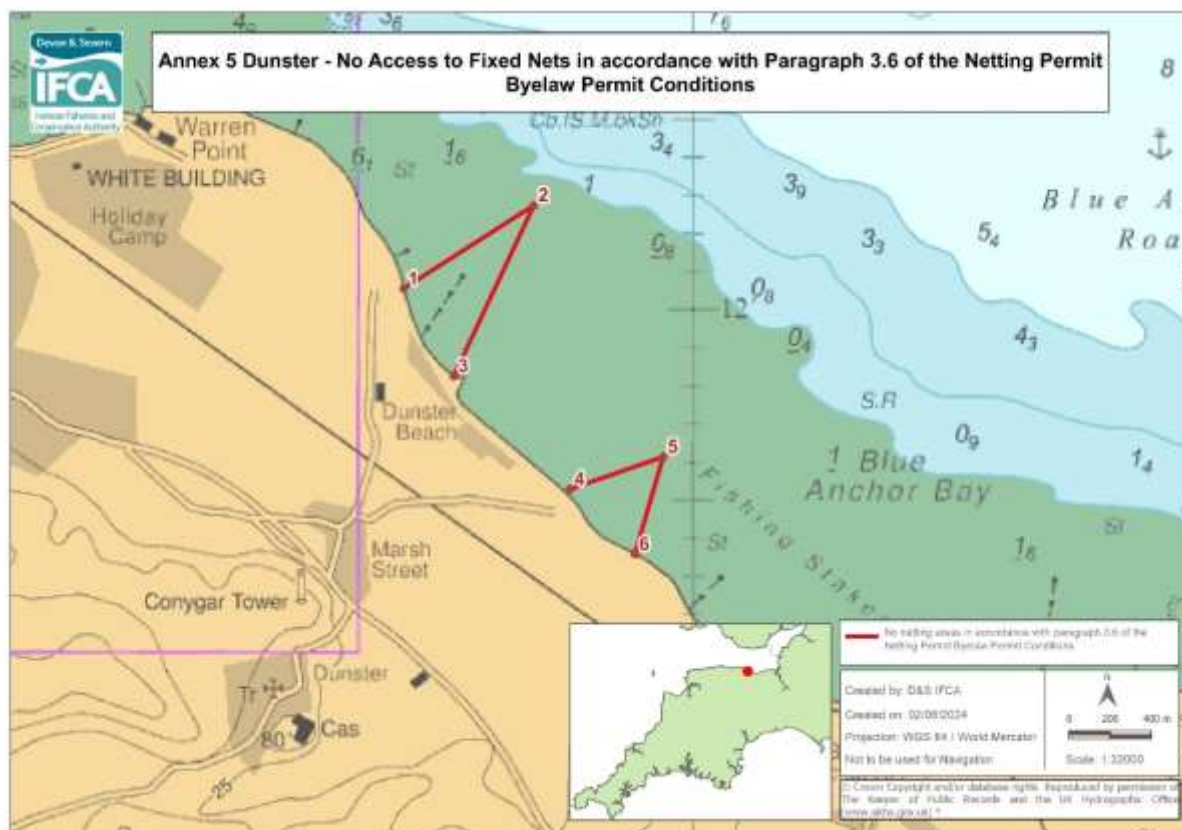
No access to fixed nets in accordance with paragraph 3.6 of the Netting Permit Byelaw Permit Conditions, within the D&S IFCA's District outlined by the following points plotted sequentially from Point 1 to Point 3, then returning to Point 1. The landward boundary follows Mean High Water.

Point Number	Latitude	Longitude
1 (Watchet Lime Kiln)	51° 10.928 N	003° 20.550 W
2	51° 11.220 N	003° 20.180 W
3 (Watchet Lighthouse)	51° 11.034 N	003° 19.719 W

* www.ukho.gov.uk/copyright

All Positions are expressed in degrees, decimal minutes (DDM) and shall be measured according to the WGS84 Geographic Co-ordinate System

Version control: Netting Permit Byelaw Annexes 1st July 2024 – (for Archive & Reference only)



Annex 5 Dunster

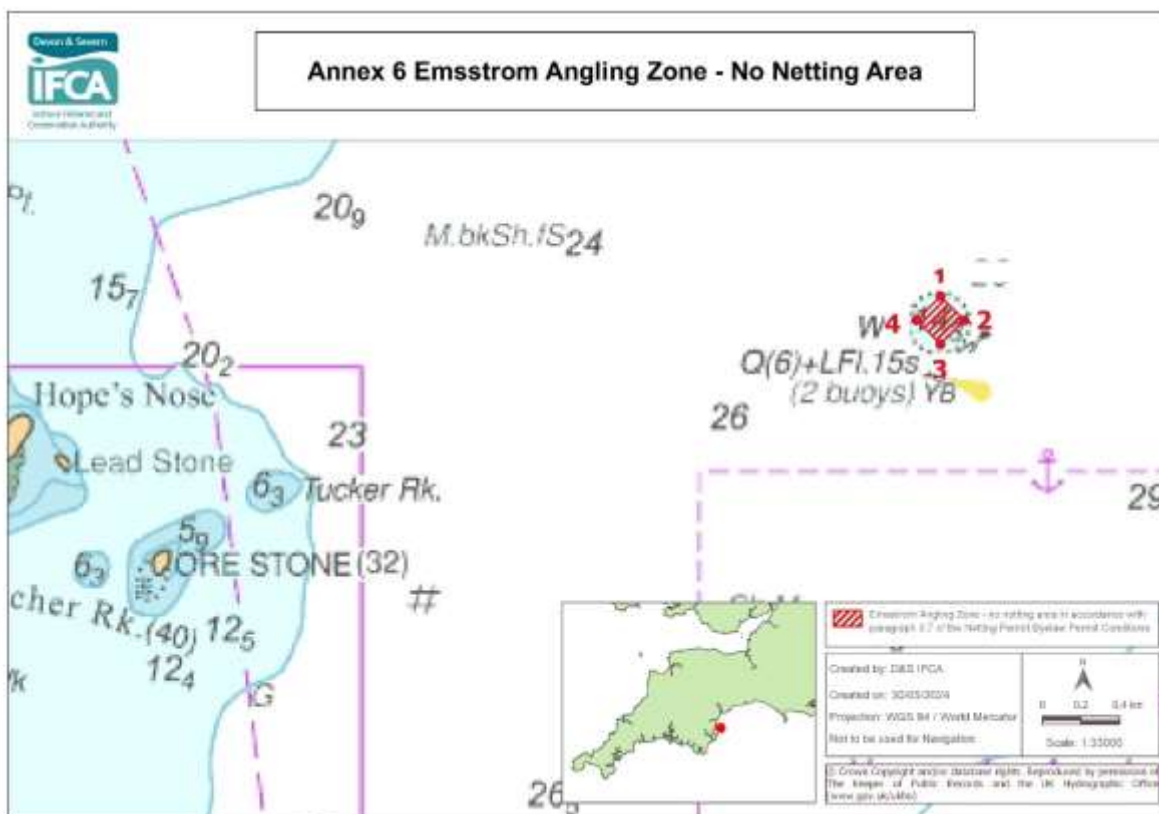
No access to fixed nets in accordance with paragraph 3.6 of the Netting Permit Byelaw Permit Conditions, within the D&S IFCA's District outlined by the following points plotted sequentially from Point 1 to Point 3, then returning to Point 1, and from Point 4 to Point 6 then returning to Point 4. The landward boundary in both areas follows Mean High Water.

Point Number	Latitude	Longitude
1	51° 12.056 N	003° 26.211 W
2	51° 12.275 N	003° 25.666 W
3	51° 11.826 N	003° 26.001 W
Landward boundary follows Mean High Water to Point 4		
4	51° 11.529 N	003° 25.515 W
5	51° 11.614 N	003° 25.125 W
6	51° 11.358 N	003° 25.244 W
Landward boundary follows Mean High Water to Point 6		

* www.ukho.gov.uk/copyright

All Positions are expressed in degrees, decimal minutes (DDM) and shall be measured according to the WGS84 Geographic Co-ordinate System

Version control: Netting Permit Byelaw Annexes 1st July 2024 – (for Archive & Reference only)



Annex 6 – Emsstrom Angling Zone

No access for the use of any net in accordance with paragraph 3.7 of the Netting Permit Byelaw Permit Conditions, within the D&S IFCA's District outlined by the following points plotted sequentially from Point 1 to Point 4, then returning to Point 1.

Point Number	Latitude	Longitude
1	50° 28.167 N	003° 24.860 W
2	50° 28.100 N	003° 24.755 W
3	50° 28.033 N	003° 24.860 W
4	50° 28.100 N	003° 24.966 W

* www.ukho.gov.uk/copyright

All Positions are expressed in degrees, decimal minutes (DDM) and shall be measured according to the WGS84 Geographic Co-ordinate System

Version control: Netting Permit Byelaw Annexes 1st July 2024 – (for Archive & Reference only)