



Devon and Severn IFCA Netting Permit Byelaw Permit Condition Annexes

November 2024

[*www.ukho.gov.uk/copyright](http://www.ukho.gov.uk/copyright)

All Positions are expressed in degrees, decimal minutes (DDM) and shall be measured according to the WGS84 Geographic Co-ordinate System

Contents

Annex 1 – Marine Conservation Zones (MCZ) Netting Restrictions	4
Bideford to Foreland Point MCZ – No Removal of Spiny Lobster	4
Lundy MCZ – No Removal of Spiny Lobster	6
Skerries Bank and Surrounds MCZ – No Removal of Spiny Lobster	7
Annex 2 - Estuary Closing Lines	9
Upper Reaches Severn Estuary Closing Line	9
River Axe (Somerset) Closing Line.....	10
River Brue Closing Line	11
River Parrett Closing Line	12
River Lyn Closing Line	13
Rivers Taw and Torridge Closing Line.....	14
River Tamar Closing Line	15
River Plym Closing Line	16
River Yealm Closing Line	17
River Erme Closing Line.....	18
River Avon Closing Line	19
Salcombe Estuary Closing Line.....	20
River Dart Closing Line	21
River Teign Closing Line	22
River Exe Closing Line	23
River Otter Closing Line	24
River Sid Closing Line	25
River Axe (Devon) Closing Line	26
Annex 3 - Devon Coastal Areas Netting Restrictions	27
Coastal Area 1 - Branscombe to Humble Point	27
Coastal Area 2 - Torquay Harbour to Salcombe Mouth	28
Coastal Area 3 - Langerstone Point to Mew Stone	29
Coastal Area 4 - St Anchorite's Rock to Warren Point.....	30
Coastal Area 5 - Devil's Point to Yealm Head	31
Coastal Area 6 - Blackchurch Rock to Baggy Point	32
Coastal Area 7- Morte Point to Bull Point.....	33
Coastal Area 8 - Beacon Point to Rillage Point.....	34
Coastal Area 9 - Duty Point to Foreland Point	35
Annex 4 - Lundy Island No Netting Area	36
Annex 5 - Somerset Coastal Areas Netting Restrictions	38
Coastal Area 1 - Berrow Flats	38

*www.ukho.gov.uk/copyright

All Positions are expressed in degrees, decimal minutes (DDM) and shall be measured according to the WGS84 Geographic Co-ordinate System

Coastal Area 2 - Doniford 40

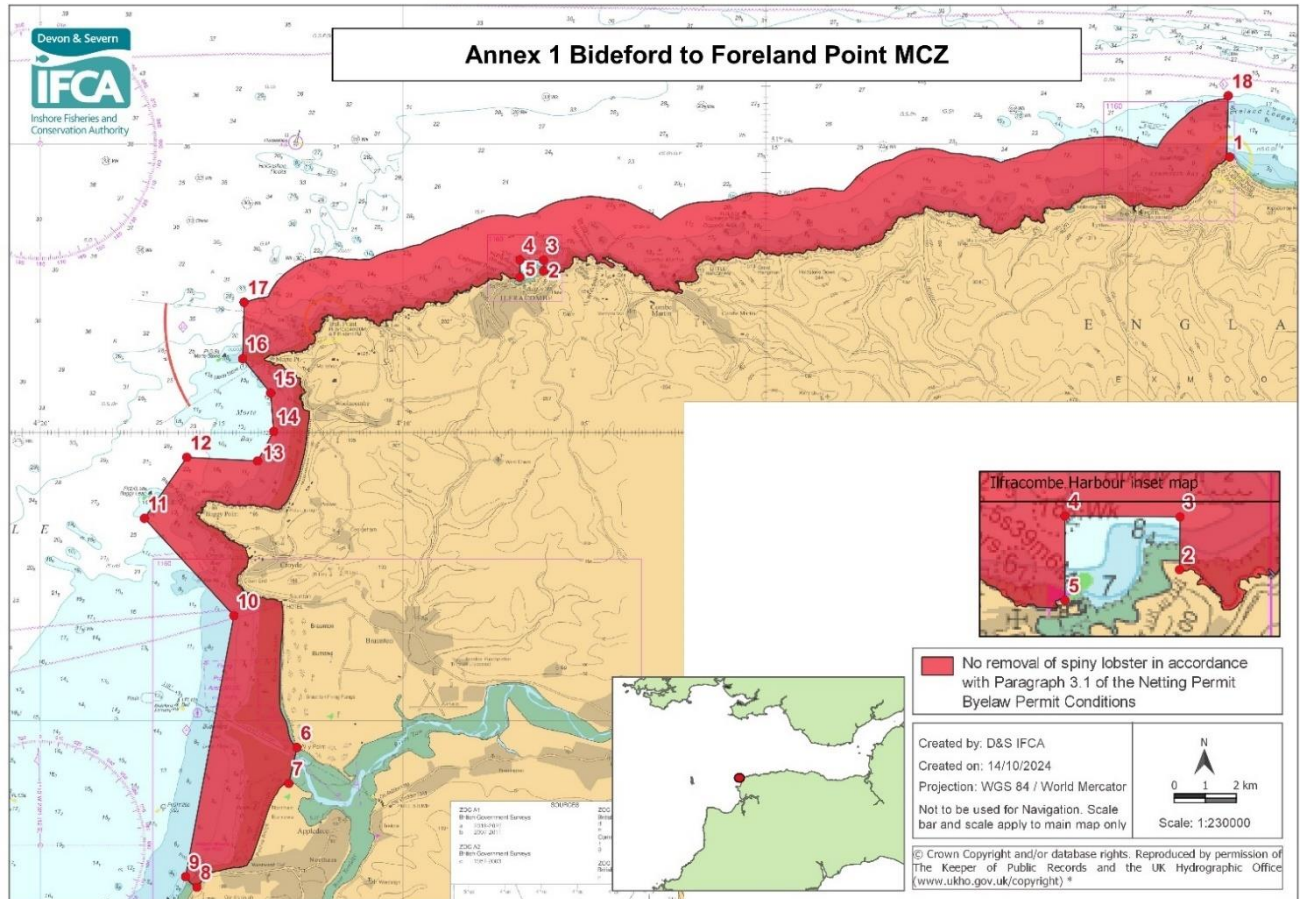
Coastal Area 3 - Dunster 41

Coastal Area 4 - Watchet 42

Annex 6 - Emsstrom Angling Zone No Netting Area 43

Annex 1 – Marine Conservation Zones (MCZ) Netting Restrictions

Bideford to Foreland Point MCZ – No Removal of Spiny Lobster



Explanation of Restriction

No spiny lobster can be removed from the MCZs in Annex 1, as spiny lobster is a designated feature of the site.

*www.ukho.gov.uk/copyright

All Positions are expressed in degrees, decimal minutes (DDM) and shall be measured according to the WGS84 Geographic Co-ordinate System

No removal of Spiny Lobster in accordance with paragraph 3.1 of the Netting Permit Byelaw Permit Conditions, within the D&S IFCA's District outlined by the following points plotted sequentially from Point 1 to Point 18, then returning to Point 1. The landward boundary follows Mean High Water.

Point Number	Latitude	Longitude
1	51° 14.764 N	003° 47.204 W
Landward boundary follows Mean High Water to Point 2		
2	51° 12.792 N	004° 06.130 W
3	51° 12.980 N	004° 06.126 W
4	51° 12.983 N	004° 06.778 W
5	51° 12.683 N	004° 06.778 W
Landward boundary follows Mean High Water to Point 6		
6	51° 04.524 N	004° 12.897 W
7	51° 03.849 N	004° 13.416 W
Landward boundary follows Mean High Water to Point 8		
8	51° 02.098 N	004° 15.685 W
9	51° 02.281 N	004° 16.001 W
10	51° 06.816 N	004° 14.667 W
11	51° 08.505 N	004° 17.135 W
12	51° 09.563 N	004° 15.967 W
13	51° 09.499 N	004° 14.015 W
14	51° 10.011 N	004° 13.570 W
15	51° 10.676 N	004° 13.655 W
16	51° 11.274 N	004° 14.426 W
17	51° 12.250 N	004° 14.385 W
Seaward boundary follows a one nautical mile line from Mean High Water to Point 18		
18	51° 15.825 N	003° 47.244 W

*www.ukho.gov.uk/copyright

All Positions are expressed in degrees, decimal minutes (DDM) and shall be measured according to the WGS84 Geographic Co-ordinate System

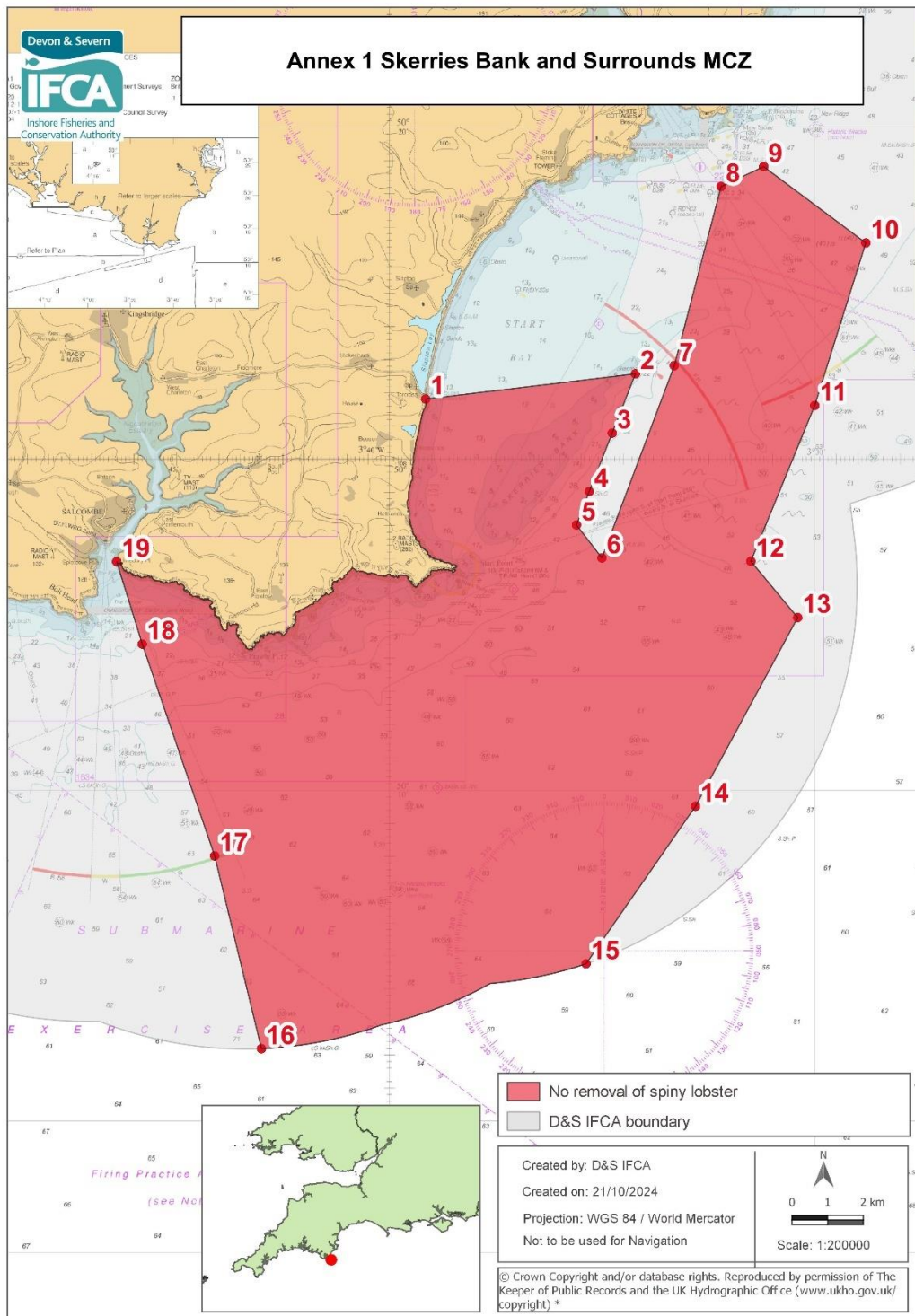
[illegible]

No spiny lobster can be removed from the MCZs in Annex 1, as spiny lobster is a designated feature of the site.

Point Number	Latitude	Longitude
1	51° 13.022 N	004° 42.113 W
2	51° 12.972 N	004° 38.049 W
3	51° 08.986 N	004° 38.123 W
4	51° 09.040 N	004° 42.172 W

November 2024

Skerries Bank and Surrounds MCZ – No Removal of Spiny Lobster



Explanation of Restriction

No spiny lobster can be removed from the MCZs in Annex 1, as spiny lobster is a designated feature of the site.

*www.ukho.gov.uk/copyright

All Positions are expressed in degrees, decimal minutes (DDM) and shall be measured according to the WGS84 Geographic Co-ordinate System

No removal of Spiny Lobster within the D&S IFCA's District outlined by the following points plotted sequentially from Point 1 to Point 19, then returning to Point 1. The landward boundary follows Mean High Water.

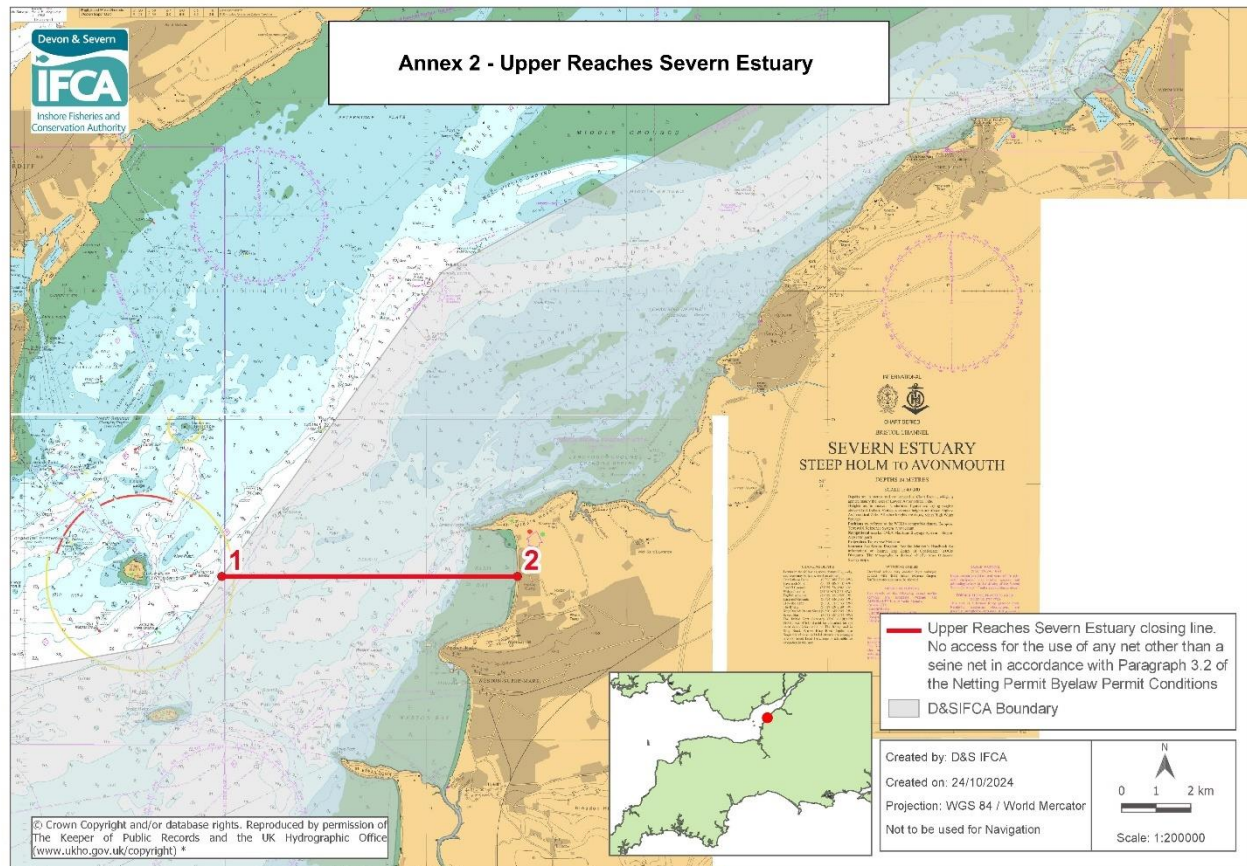
Point Number	Latitude	Longitude
1	50° 15.897 N	003° 39.141 W
2	50° 16.278 N	003° 34.212 W
3	50° 15.384 N	003° 34.758 W
4	50° 14.502 N	003° 35.298 W
5	50° 13.998 N	003° 35.598 W
6	50° 13.500 N	003° 35.000 W
7	50° 16.400 N	003° 33.300 W
8	50° 19.100 N	003° 32.200 W
9	50° 19.400 N	003° 31.200 W
10	50° 18.250 N	003° 28.800 W
11	50° 15.800 N	003° 30.000 W
12	50° 13.450 N	003° 31.500 W
13	50° 12.600 N	003° 30.400 W
14	50° 09.750 N	003° 32.800 W
15	50° 07.368 N	003° 35.373 W
Then follow the six nautical mile limit to Point 16		
16	50° 06.084 N	003° 43.000 W
17	50° 09.000 N	003° 44.100 W
18	50° 12.200 N	003° 45.800 W
19	50° 13.444 N	003° 46.402 W
The landward boundary follows mean high water to Point 1		

*www.ukho.gov.uk/copyright

All Positions are expressed in degrees, decimal minutes (DDM) and shall be measured according to the WGS84 Geographic Co-ordinate System

Annex 2 - Estuary Closing Lines

Upper Reaches Severn Estuary Closing Line



Explanation of the Access Restrictions:

No nets can be used to the landward of the Annex 2 closing line other than a seine net for the targeting and capture of sand eel only.

If you intend to use a seine net in Annex 2 areas other restrictions apply, which are detailed in the Netting Permit Conditions.

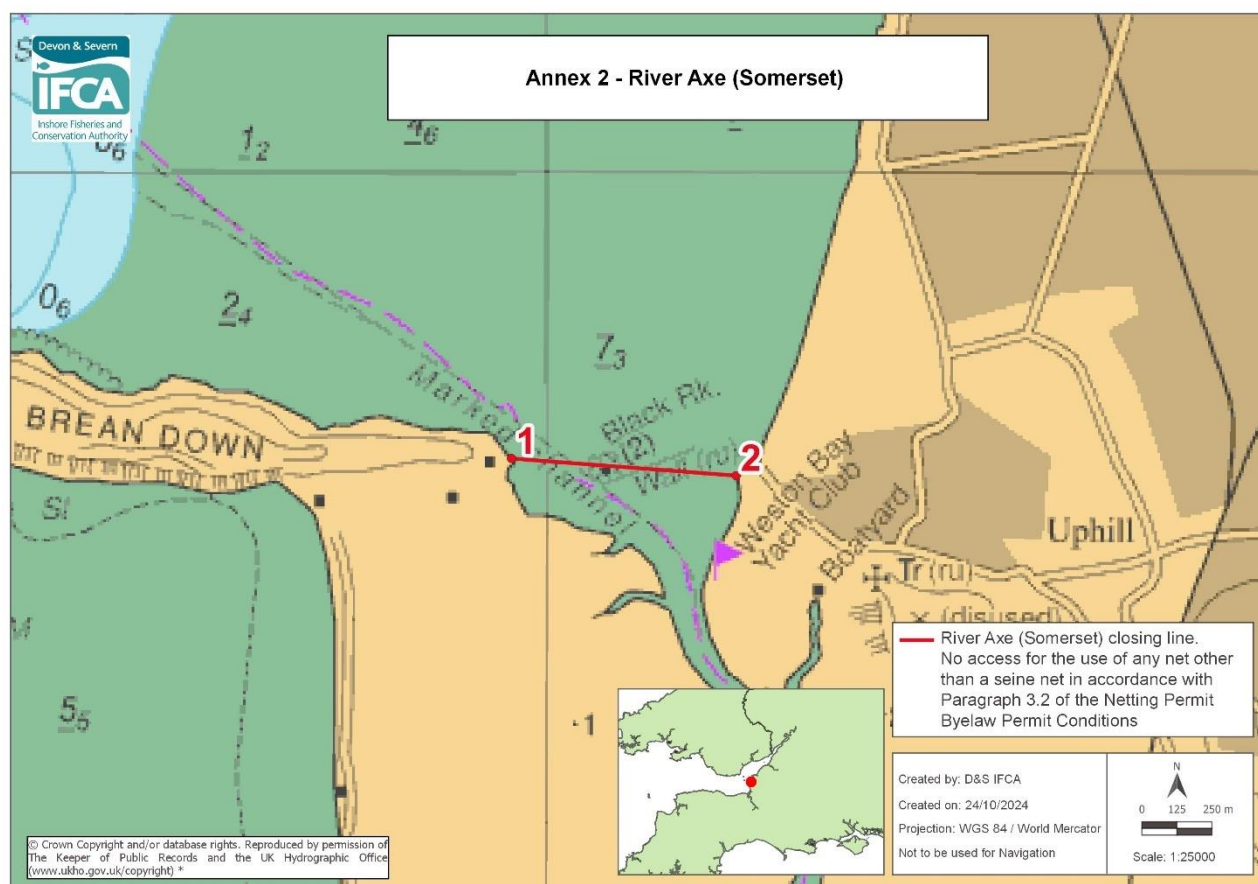
No access for the use of any net other than a seine net in accordance with paragraph 3.2 of the Netting Permit Byelaw Permit Conditions, within the D&S IFCA's District inside of a line drawn from Point 1 to Point 2 (the median line with Welsh Government waters).

Point Number	Latitude	Longitude
1	51° 22.553 N	003° 05.090 W
2	51° 22.553 N	002° 57.724 W

*www.ukho.gov.uk/copyright

All Positions are expressed in degrees, decimal minutes (DDM) and shall be measured according to the WGS84 Geographic Co-ordinate System

River Axe (Somerset) Closing Line



Explanation of the Access Restrictions:

No nets can be used to the landward of the Annex 2 closing line other than a seine net for the targeting and capture of sand eel only.

If you intend to use a seine net in Annex 2 areas other restrictions apply, which are detailed in the Netting Permit Conditions.

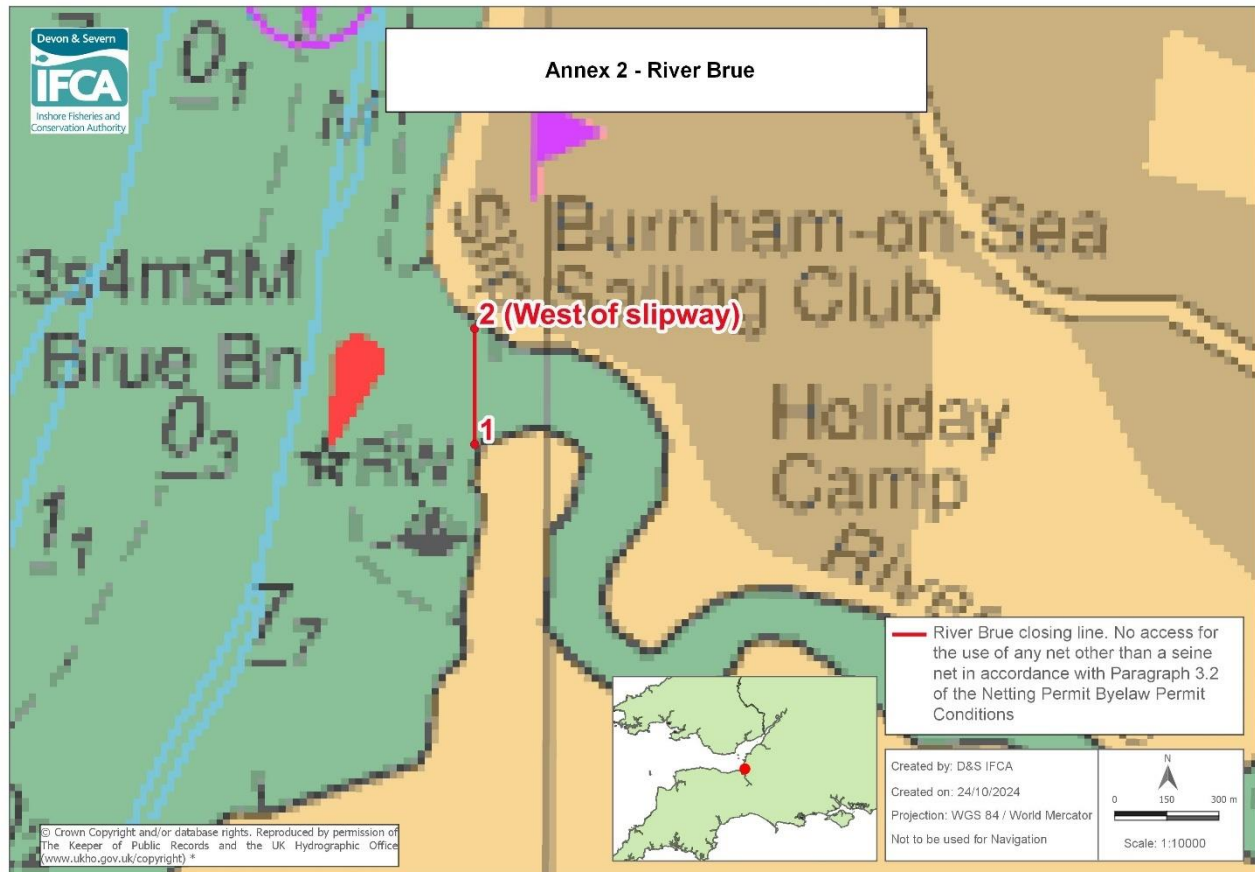
No access for the use of any net other than a seine net in accordance with paragraph 3.2 of the Netting Permit Byelaw Permit Conditions, within the D&S IFCA's District inside of a line drawn from Point 1 to Point 2.

Point Number	Latitude	Longitude
1	51° 19.450 N	003° 00.108 W
2	51° 19.417 N	002° 59.418 W

*www.ukho.gov.uk/copyright

All Positions are expressed in degrees, decimal minutes (DDM) and shall be measured according to the WGS84 Geographic Co-ordinate System

River Brue Closing Line



Explanation of the Access Restrictions:

No nets can be used to the landward of the Annex 2 closing line other than a seine net for the targeting and capture of sand eel only.

If you intend to use a seine net in Annex 2 areas other restrictions apply, which are detailed in the Netting Permit Conditions.

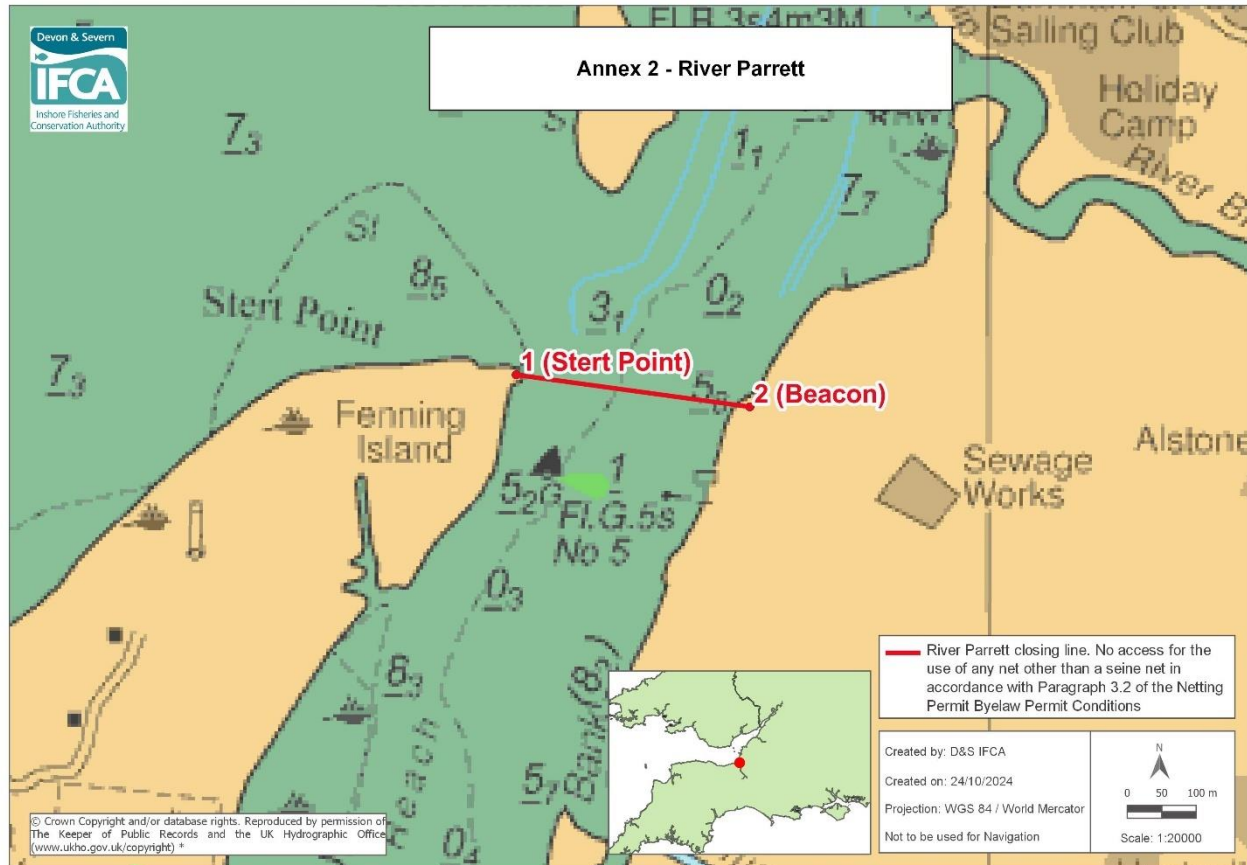
No access for the use of any net other than a seine net in accordance with paragraph 3.2 of the Netting Permit Byelaw Permit Conditions, within the D&S IFCA's District inside of a line drawn from Point 1 to Point 2.

Point Number	Latitude	Longitude
1	51° 13.528 N	003° 00.091 W
2 (West of slipway)	51° 13.618 N	003° 00.091 W

*www.ukho.gov.uk/copyright

All Positions are expressed in degrees, decimal minutes (DDM) and shall be measured according to the WGS84 Geographic Co-ordinate System

River Parrett Closing Line



Explanation of the Access Restrictions:

No nets can be used to the landward of the Annex 2 closing line other than a seine net for the targeting and capture of sand eel only.

If you intend to use a seine net in Annex 2 areas other restrictions apply, which are detailed in the Netting Permit Conditions.

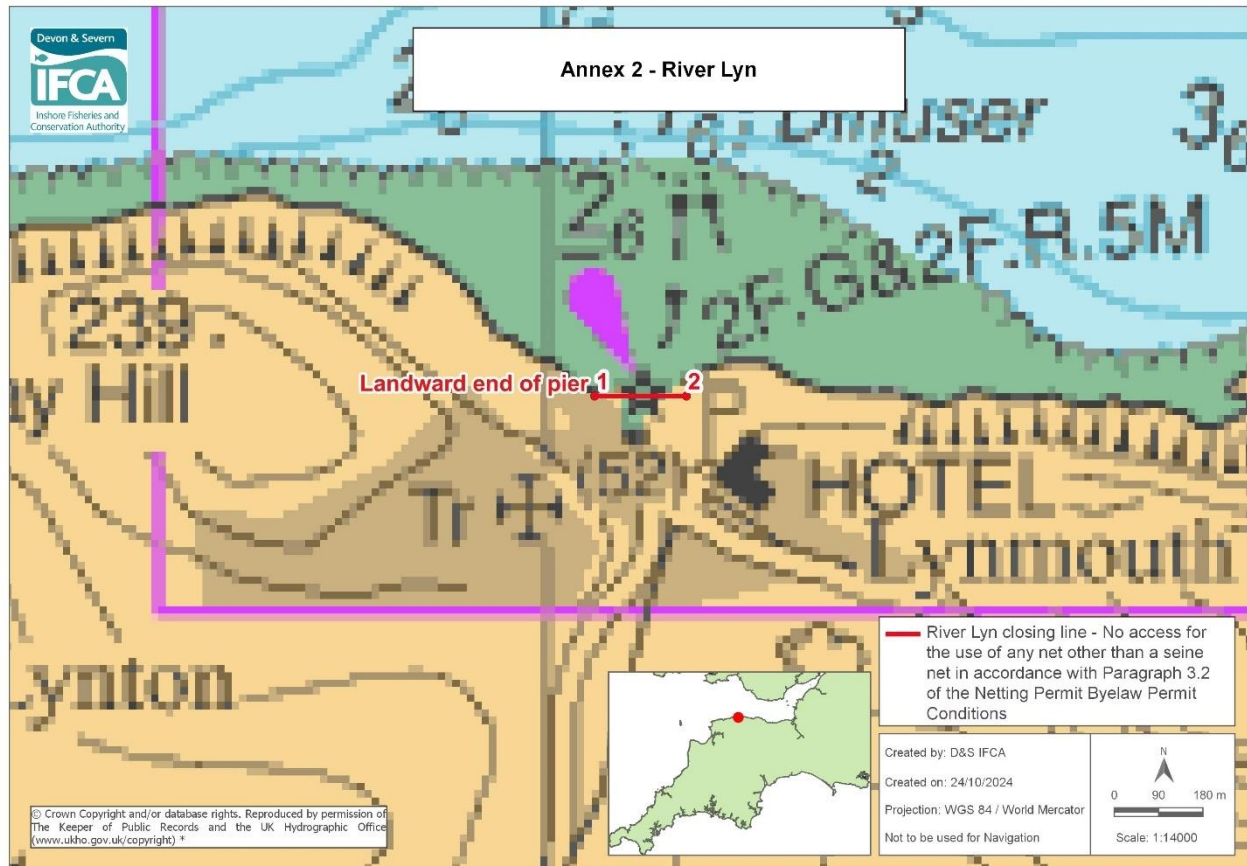
No access for the use of any net other than a seine net in accordance with paragraph 3.2 of the Netting Permit Byelaw Permit Conditions, within the D&S IFCA's District inside of a line drawn from Point 1 to Point 2.

Point Number	Latitude	Longitude
1 (Stert Point)	51° 13.106 N	003° 01.177 W
2 (Beacon)	51° 13.056 N	003° 00.595 W

*www.ukho.gov.uk/copyright

All Positions are expressed in degrees, decimal minutes (DDM) and shall be measured according to the WGS84 Geographic Co-ordinate System

River Lyn Closing Line



Explanation of the Access Restrictions:

No nets can be used to the landward of the Annex 2 closing line other than a seine net for the targeting and capture of sand eel only.

If you intend to use a seine net in Annex 2 areas other restrictions apply, which are detailed in the Netting Permit Conditions.

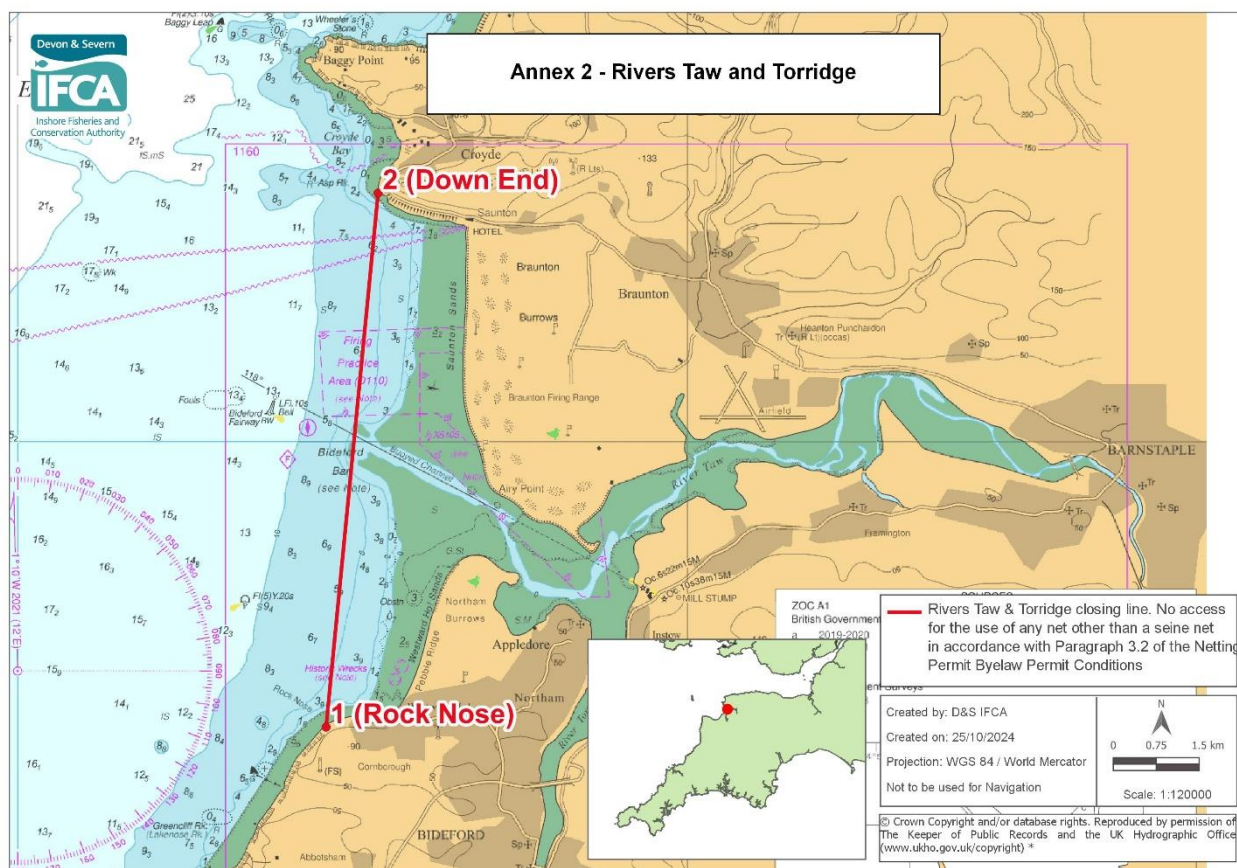
No access for the use of any net other than a seine net in accordance with paragraph 3.2 of the Netting Permit Byelaw Permit Conditions, within the D&S IFCA's District inside of a line drawn from Point 1 to Point 2.

Point Number	Latitude	Longitude
1 (landward end of pier)	51° 13.900 N	003° 49.918 W
2	51° 13.900 N	003° 49.758 W

*www.ukho.gov.uk/copyright

All Positions are expressed in degrees, decimal minutes (DDM) and shall be measured according to the WGS84 Geographic Co-ordinate System

Rivers Taw and Torridge Closing Line



Explanation of the Access Restrictions:

No nets can be used to the landward of the Annex 2 closing line other than a seine net for the targeting and capture of sand eel only.

If you intend to use a seine net in Annex 2 areas other restrictions apply, which are detailed in the Netting Permit Conditions.

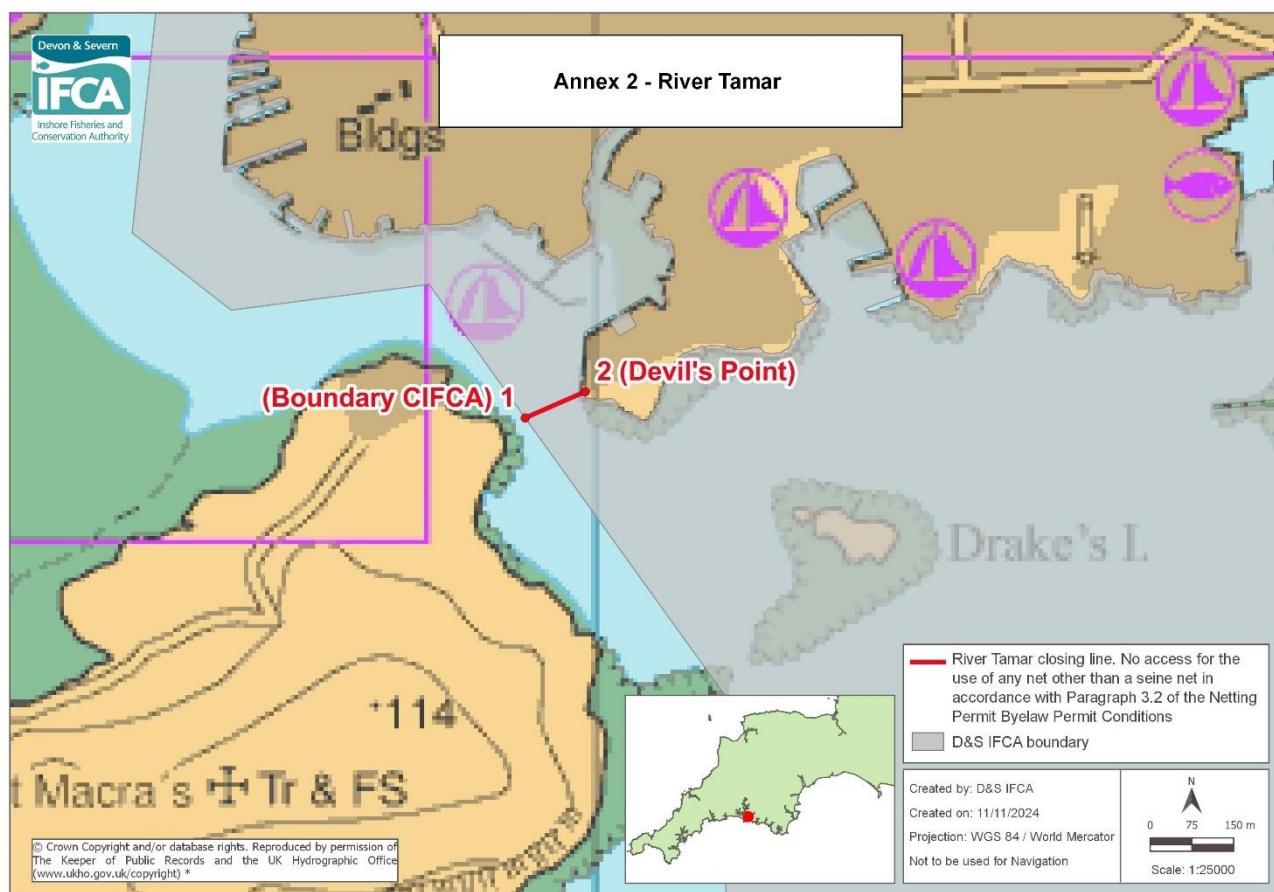
No access for the use of any net other than a seine net in accordance with paragraph 3.2 of the Netting Permit Byelaw Permit Conditions, within the D&S IFCA's District inside of a line drawn from Point 1 to Point 2.

Point Number	Latitude	Longitude
1 (Rock Nose)	51° 02.298 N	004° 15.396 W
2 (Down End)	51° 07.331 N	004° 14.619 W

*www.ukho.gov.uk/copyright

All Positions are expressed in degrees, decimal minutes (DDM) and shall be measured according to the WGS84 Geographic Co-ordinate System

River Tamar Closing Line



Explanation of the Access Restrictions:

No nets can be used to the landward of the Annex 2 closing line other than a seine net for the targeting and capture of sand eel only.

If you intend to use a seine net in Annex 2 areas other restrictions apply, which are detailed in the Netting Permit Conditions.

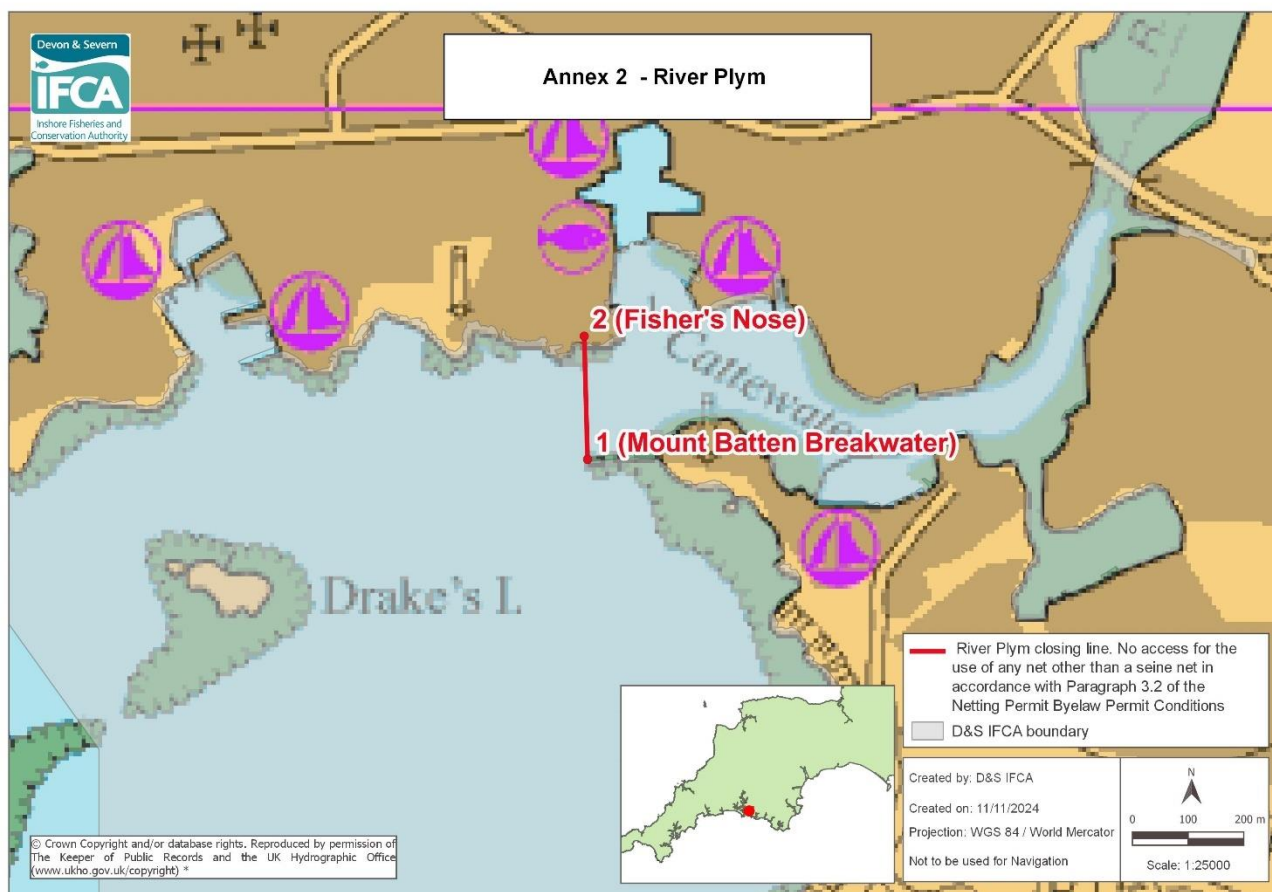
No access for the use of any net other than a seine net in accordance with paragraph 3.2 of the Netting Permit Byelaw Permit Conditions, within the D&S IFCA's District inside of a line drawn from Point 1 to Point 2.

Point Number	Latitude	Longitude
1 (Boundary CIFCA)	50° 21.541 N	004° 10.208 W
2 (Devil's Point)	50° 21.592 N	004° 10.026 W

*www.ukho.gov.uk/copyright

All Positions are expressed in degrees, decimal minutes (DDM) and shall be measured according to the WGS84 Geographic Co-ordinate System

River Plym Closing Line



Explanation of the Access Restrictions:

No nets can be used to the landward of the Annex 2 closing line other than a seine net for the targeting and capture of sand eel only.

If you intend to use a seine net in Annex 2 areas other restrictions apply, which are detailed in the Netting Permit Conditions.

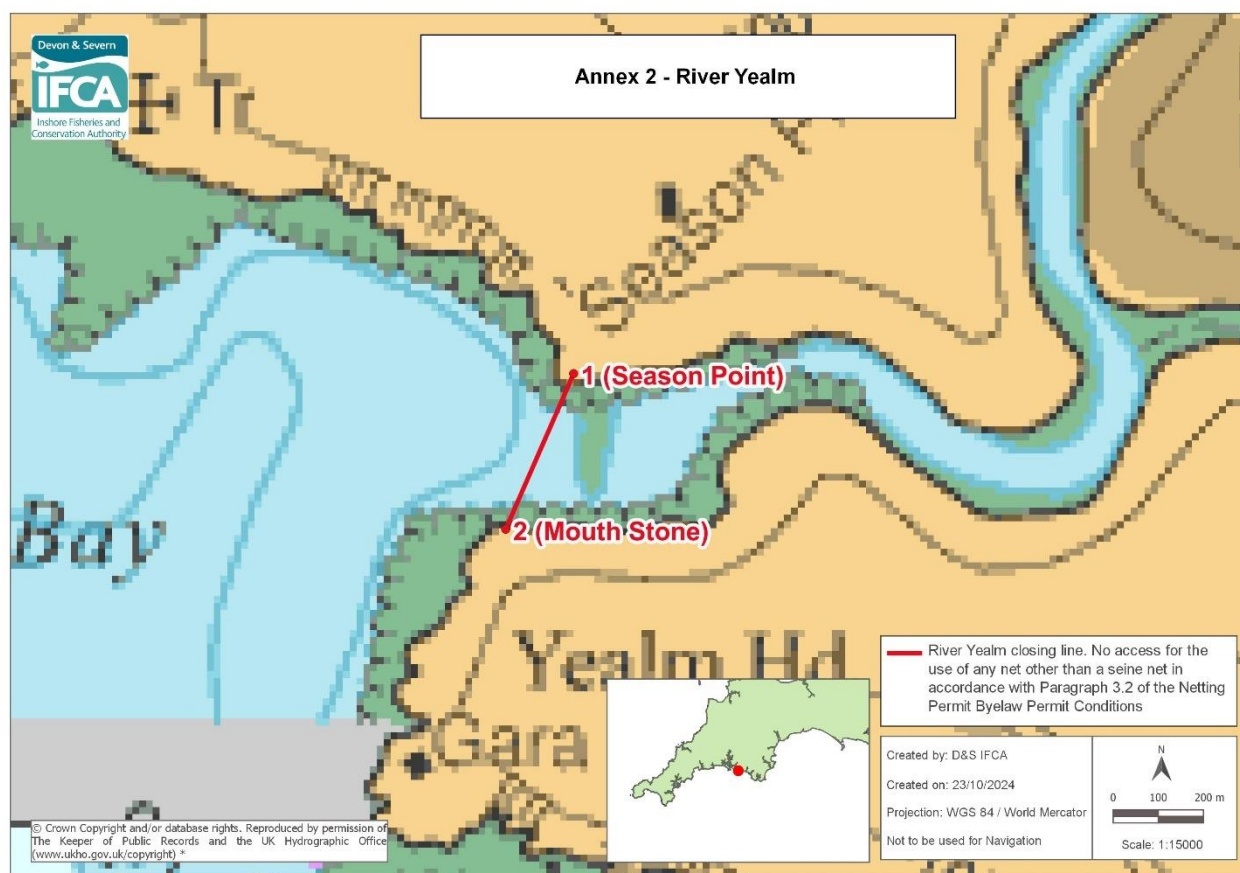
No access for the use of any net other than a seine net in accordance with paragraph 3.2 of the Netting Permit Byelaw Permit Conditions, within the D&S IFCA's District inside of a line drawn from Point 1 to Point 2.

Point Number	Latitude	Longitude
1 (Mount Batten Breakwater)	50° 21.562 N	004° 08.120 W
2 (Fisher's Nose)	50° 21.801 N	004° 08.120 W

*www.ukho.gov.uk/copyright

All Positions are expressed in degrees, decimal minutes (DDM) and shall be measured according to the WGS84 Geographic Co-ordinate System

River Yealm Closing Line



Explanation of the Access Restrictions:

No nets can be used to the landward of the Annex 2 closing line other than a seine net for the targeting and capture of sand eel only.

If you intend to use a seine net in Annex 2 areas other restrictions apply, which are detailed in the Netting Permit Conditions.

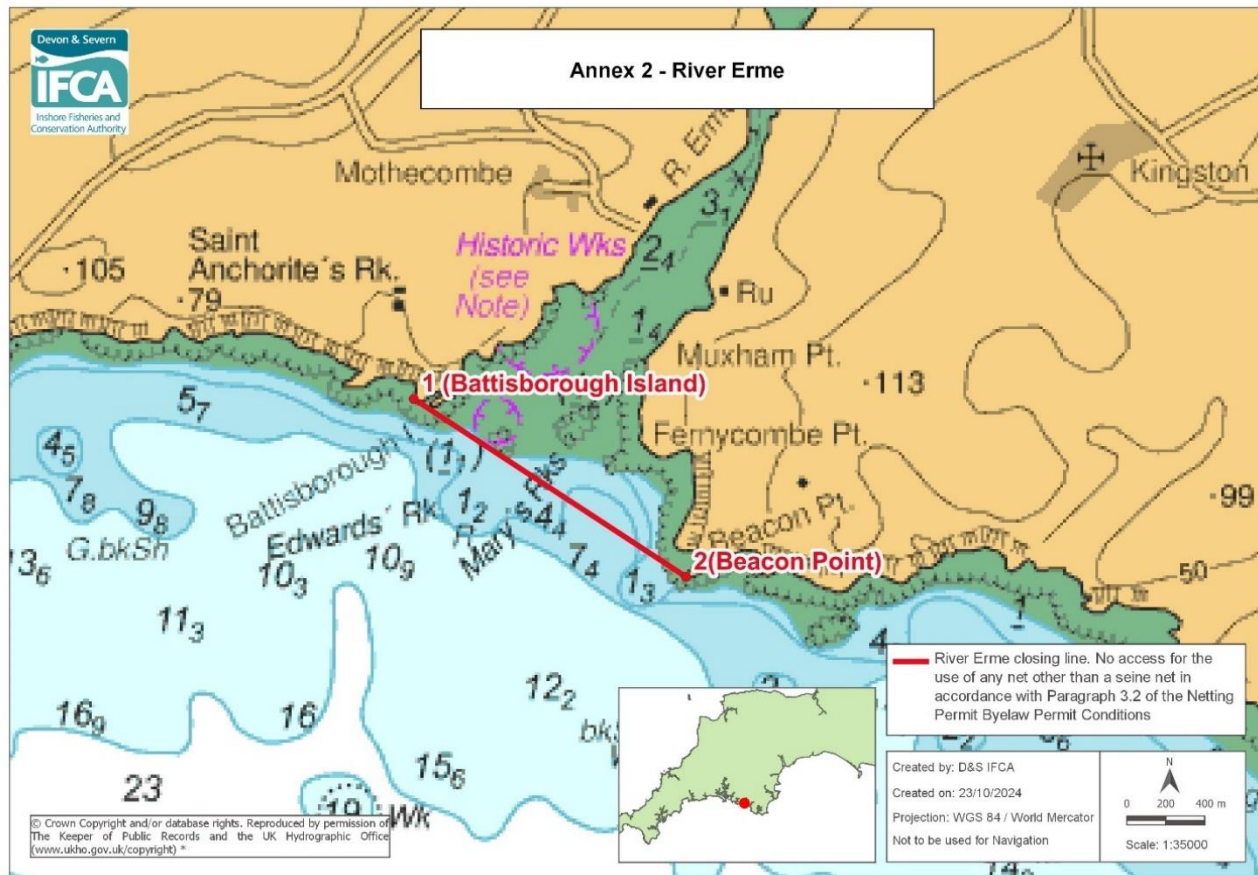
No access for the use of any net other than a seine net in accordance with paragraph 3.2 of the Netting Permit Byelaw Permit Conditions, within the D&S IFCA's District inside of a line drawn from Point 1 to Point 2.

Point Number	Latitude	Longitude
1 (Season Point)	50° 18.736 N	004° 04.148 W
2 (Mouth Stone)	50° 18.550 N	004° 04.275 W

*www.ukho.gov.uk/copyright

All Positions are expressed in degrees, decimal minutes (DDM) and shall be measured according to the WGS84 Geographic Co-ordinate System

River Erme Closing Line



Explanation of the Access Restrictions:

No nets can be used to the landward of the Annex 2 closing line other than a seine net for the targeting and capture of sand eel only.

If you intend to use a seine net in Annex 2 areas other restrictions apply, which are detailed in the Netting Permit Conditions.

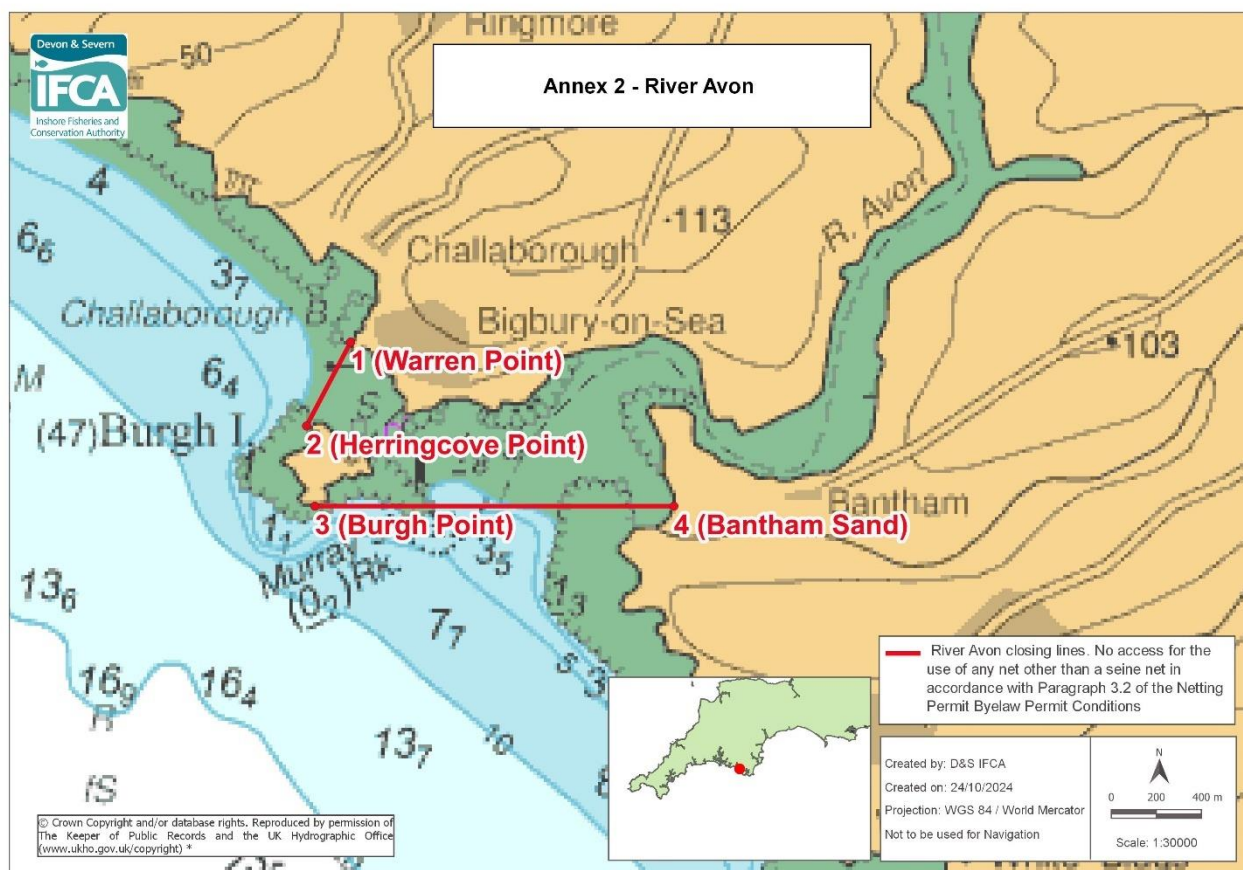
No access for the use of any net other than a seine net in accordance with paragraph 3.2 of the Netting Permit Byelaw Permit Conditions, within the D&S IFCA's District inside of a line drawn from Point 1 to Point 2.

Point Number	Latitude	Longitude
1 (Battisborough Island)	50° 18.243 N	003° 57.834 W
2 (Beacon Point)	50° 17.750 N	003° 56.657 W

*www.ukho.gov.uk/copyright

All Positions are expressed in degrees, decimal minutes (DDM) and shall be measured according to the WGS84 Geographic Co-ordinate System

River Avon Closing Line



Explanation of the Access Restrictions:

No nets can be used to the landward of the Annex 2 closing line other than a seine net for the targeting and capture of sand eel only.

If you intend to use a seine net in Annex 2 areas other restrictions apply, which are detailed in the Netting Permit Conditions.

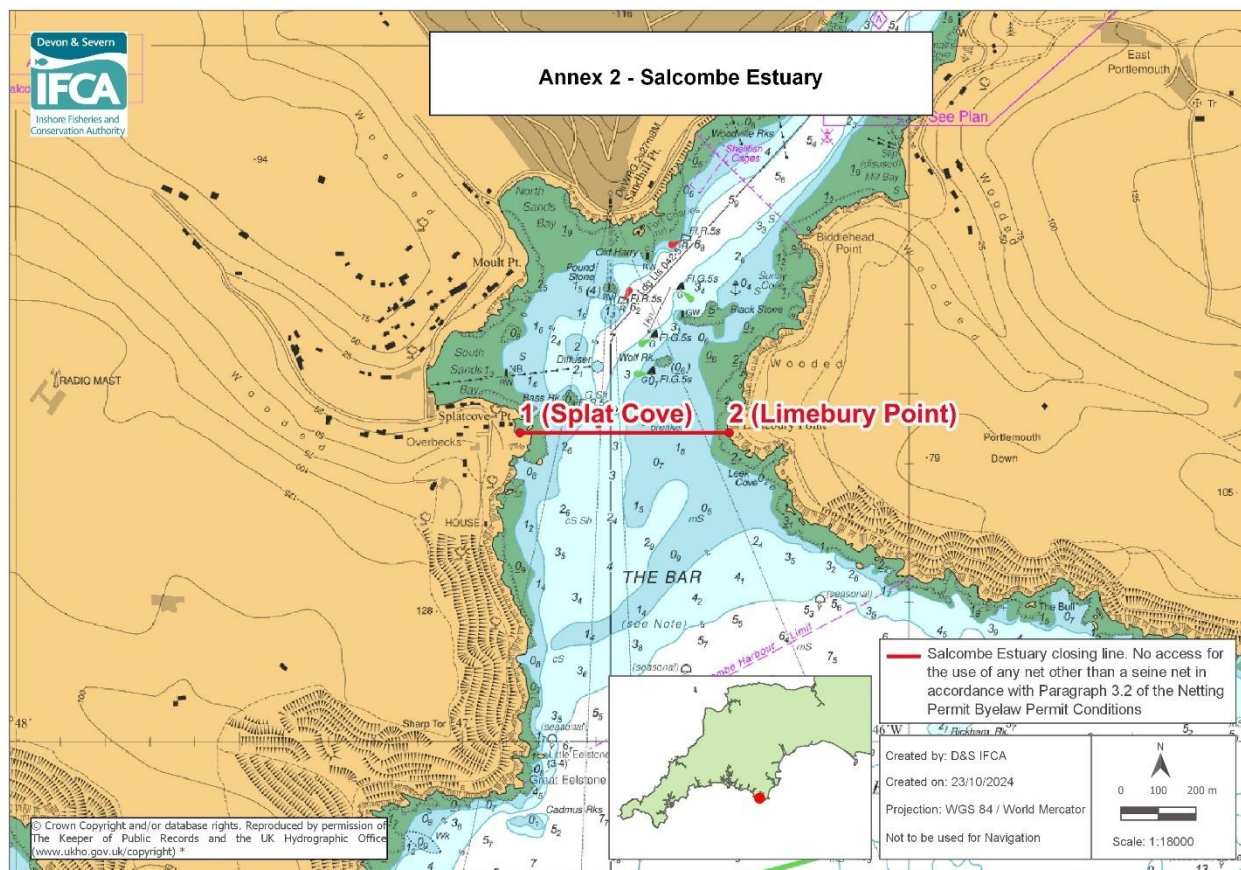
No access for the use of any net other than a seine net in accordance with paragraph 3.2 of the Netting Permit Byelaw Permit Conditions, within the D&S IFCA's District, inside of a line drawn between Point 1 to Point 2 and a line drawn between Point 3 and Point 4.

Point Number	Latitude	Longitude
1 (Warren Point)	50° 17.077 N	003° 53.884 W
2 (Herringcove Point)	50° 16.876 N	003° 54.049 W
3 (Burgh Point)	50° 16.684 N	003° 54.018 W
4 (Bantham Sand)	50° 16.684 N	003° 52.676 W

*www.ukho.gov.uk/copyright

All Positions are expressed in degrees, decimal minutes (DDM) and shall be measured according to the WGS84 Geographic Co-ordinate System

Salcombe Estuary Closing Line



Explanation of the Access Restrictions:

No nets can be used to the landward of the Annex 2 closing line other than a seine net for the targeting and capture of sand eel only.

If you intend to use a seine net in Annex 2 areas other restrictions apply, which are detailed in the Netting Permit Conditions.

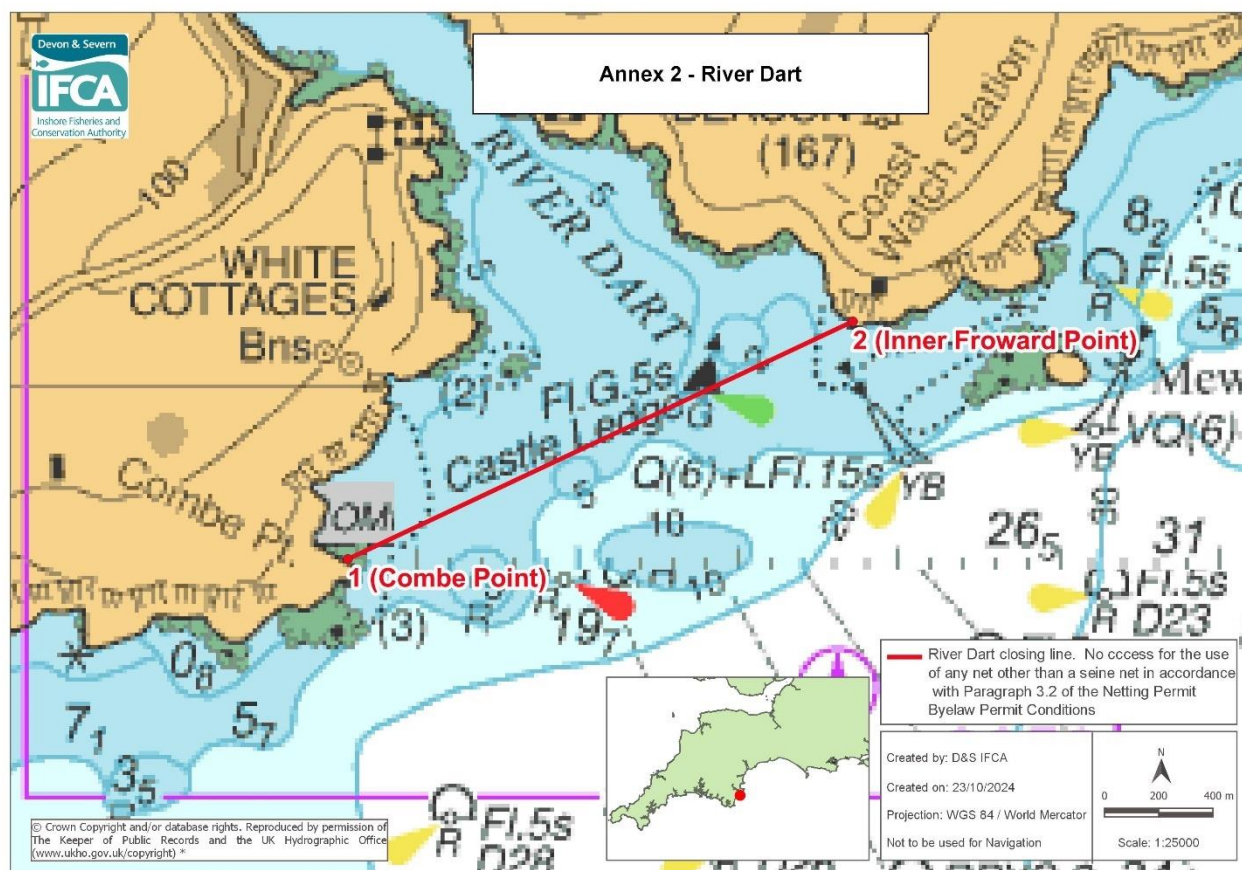
No access for the use of any net other than a seine net in accordance with paragraph 3.2 of the Netting Permit Byelaw Permit Conditions, within the D&S IFCA's District inside of a line drawn from Point 1 to Point 2.

Point Number	Latitude	Longitude
1 (Splat Cove)	50° 13.444 N	003° 46.871 W
2 (Limebury Point)	50° 13.444 N	003° 46.402 W

*www.ukho.gov.uk/copyright

All Positions are expressed in degrees, decimal minutes (DDM) and shall be measured according to the WGS84 Geographic Co-ordinate System

River Dart Closing Line



Explanation of the Access Restrictions:

No nets can be used to the landward of the Annex 2 closing line other than a seine net for the targeting and capture of sand eel only.

If you intend to use a seine net in Annex 2 areas other restrictions apply, which are detailed in the Netting Permit Conditions.

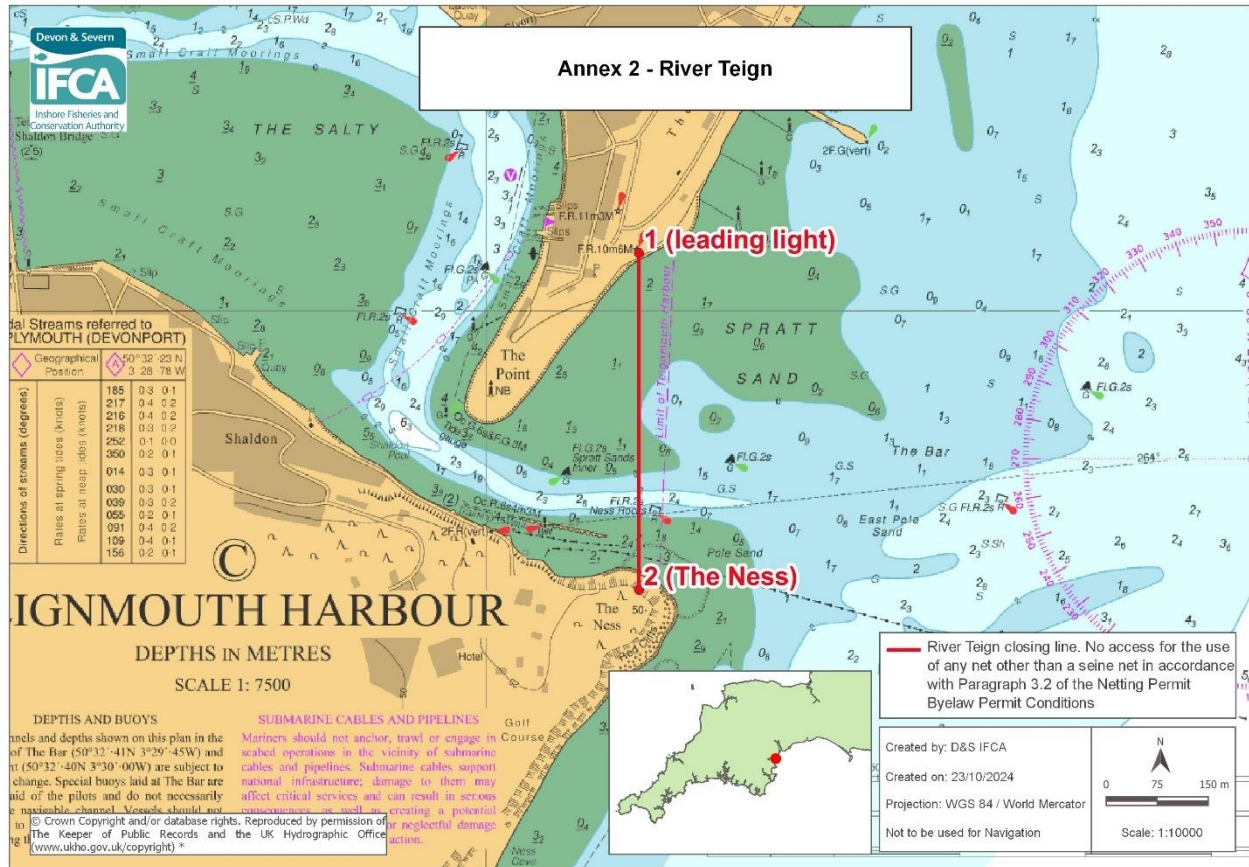
No access for the use of any net other than a seine net in accordance with paragraph 3.2 of the Netting Permit Byelaw Permit Conditions, within the D&S IFCA's District inside of a line drawn from Point 1 to Point 2.

Point Number	Latitude	Longitude
1 (Combe Point)	50° 19.648 N	003° 34.220 W
2 (Inner Froward Point)	50° 20.121 N	003° 32.648 W

*www.ukho.gov.uk/copyright

All Positions are expressed in degrees, decimal minutes (DDM) and shall be measured according to the WGS84 Geographic Co-ordinate System

River Teign Closing Line



Explanation of the Access Restrictions:

No nets can be used to the landward of the Annex 2 closing line other than a seine net for the targeting and capture of sand eel only.

If you intend to use a seine net in Annex 2 areas other restrictions apply, which are detailed in the Netting Permit Conditions.

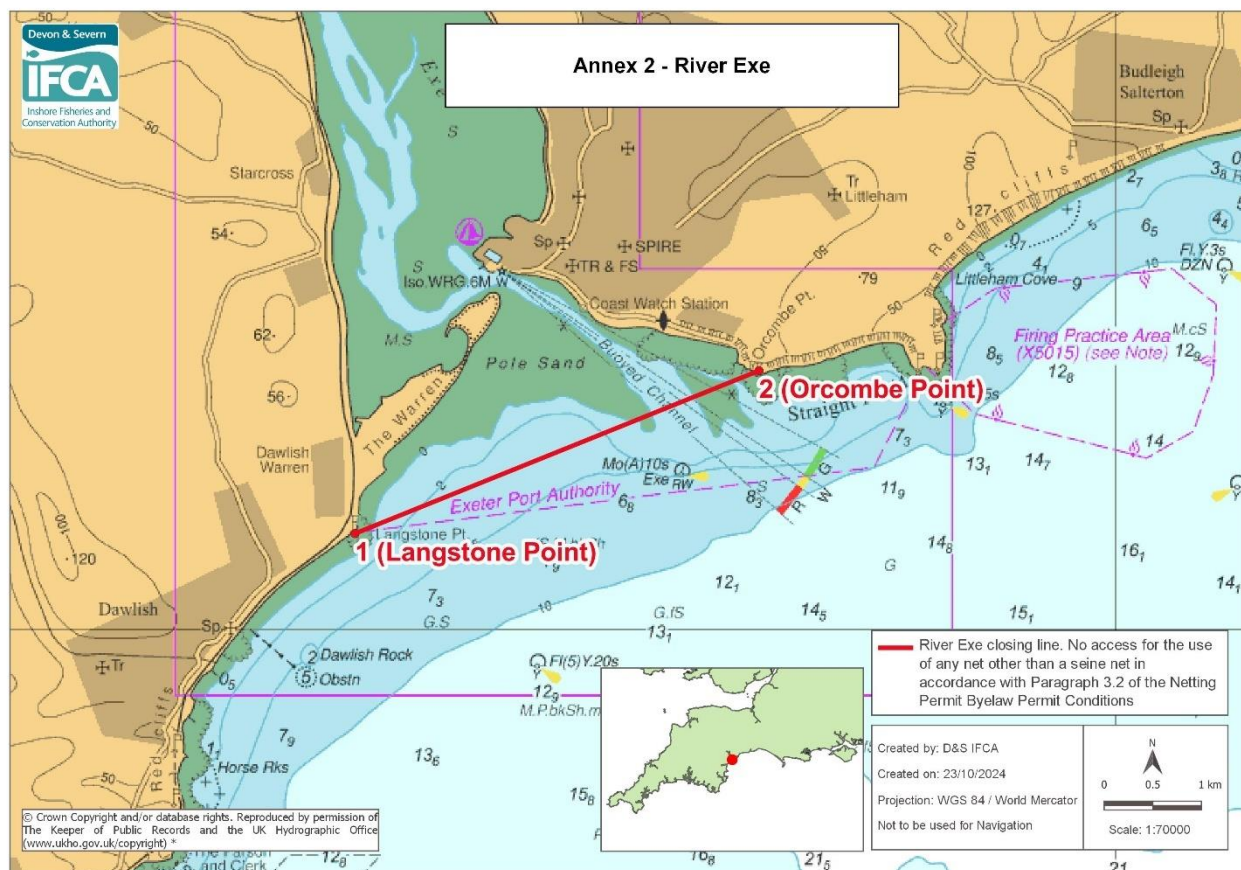
No access for the use of any net other than a seine net in accordance with paragraph 3.2 of the Netting Permit Byelaw Permit Conditions, within the D&S IFCA's District inside of a line drawn from Point 1 to Point 2.

Point Number	Latitude	Longitude
1 (leading light)	50° 32.546 N	003° 29.810 W
2 (The Ness)	50° 32.279 N	003° 29.810 W

*www.ukho.gov.uk/copyright

All Positions are expressed in degrees, decimal minutes (DDM) and shall be measured according to the WGS84 Geographic Co-ordinate System

River Exe Closing Line



Explanation of the Access Restrictions:

No nets can be used to the landward of the Annex 2 closing line other than a seine net for the targeting and capture of sand eel only.

If you intend to use a seine net in Annex 2 areas other restrictions apply, which are detailed in the Netting Permit Conditions.

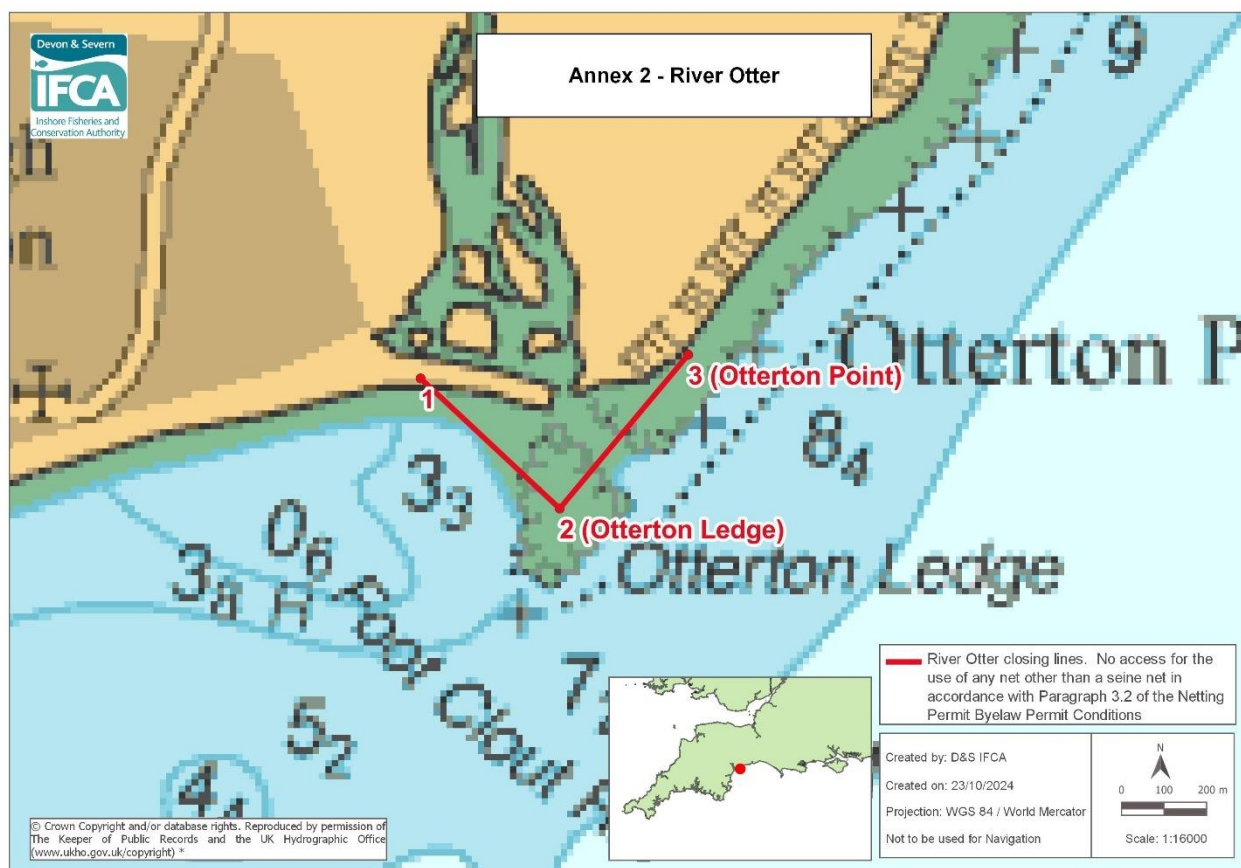
No access for the use of any net other than a seine net in accordance with paragraph 3.2 of the Netting Permit Byelaw Permit Conditions, within the D&S IFCA's District inside of a line drawn from Point 1 to Point 2.

Point Number	Latitude	Longitude
1 (Langstone Point)	50° 35.518 N	003° 26.629 W
2 (Orcombe Point)	50° 36.421 N	003° 23.108 W

*www.ukho.gov.uk/copyright

All Positions are expressed in degrees, decimal minutes (DDM) and shall be measured according to the WGS84 Geographic Co-ordinate System

River Otter Closing Line



Explanation of the Access Restrictions:

No nets can be used to the landward of the Annex 2 closing line other than a seine net for the targeting and capture of sand eel only.

If you intend to use a seine net in Annex 2 areas other restrictions apply, which are detailed in the Netting Permit Conditions.

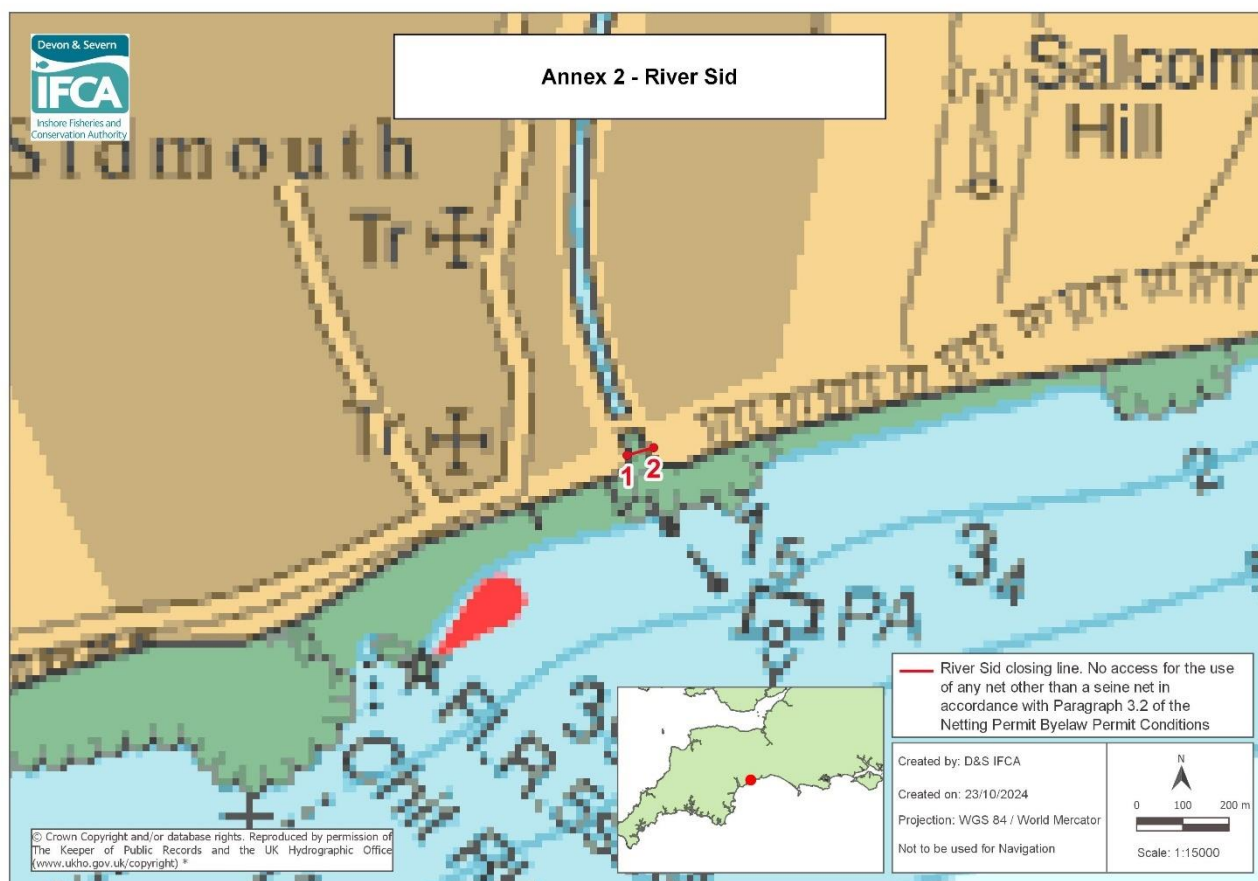
No access for the use of any net other than a seine net in accordance with paragraph 3.2 of the Netting Permit Byelaw Permit Conditions, within the D&S IFCA's District, inside of a line drawn between Point 1 to Point 2 and a line drawn between Point 2 and Point 3.

Point Number	Latitude	Longitude
1	50° 37.791 N	003° 18.676 W
2 (Otterton Ledge)	50° 37.626 N	003° 18.399 W
3 (Otterton Point)	50° 37.821 N	003° 18.143 W

*www.ukho.gov.uk/copyright

All Positions are expressed in degrees, decimal minutes (DDM) and shall be measured according to the WGS84 Geographic Co-ordinate System

River Sid Closing Line



Explanation of the Access Restrictions:

No nets can be used to the landward of the Annex 2 closing line other than a seine net for the targeting and capture of sand eel only.

If you intend to use a seine net in Annex 2 areas other restrictions apply, which are detailed in the Netting Permit Conditions.

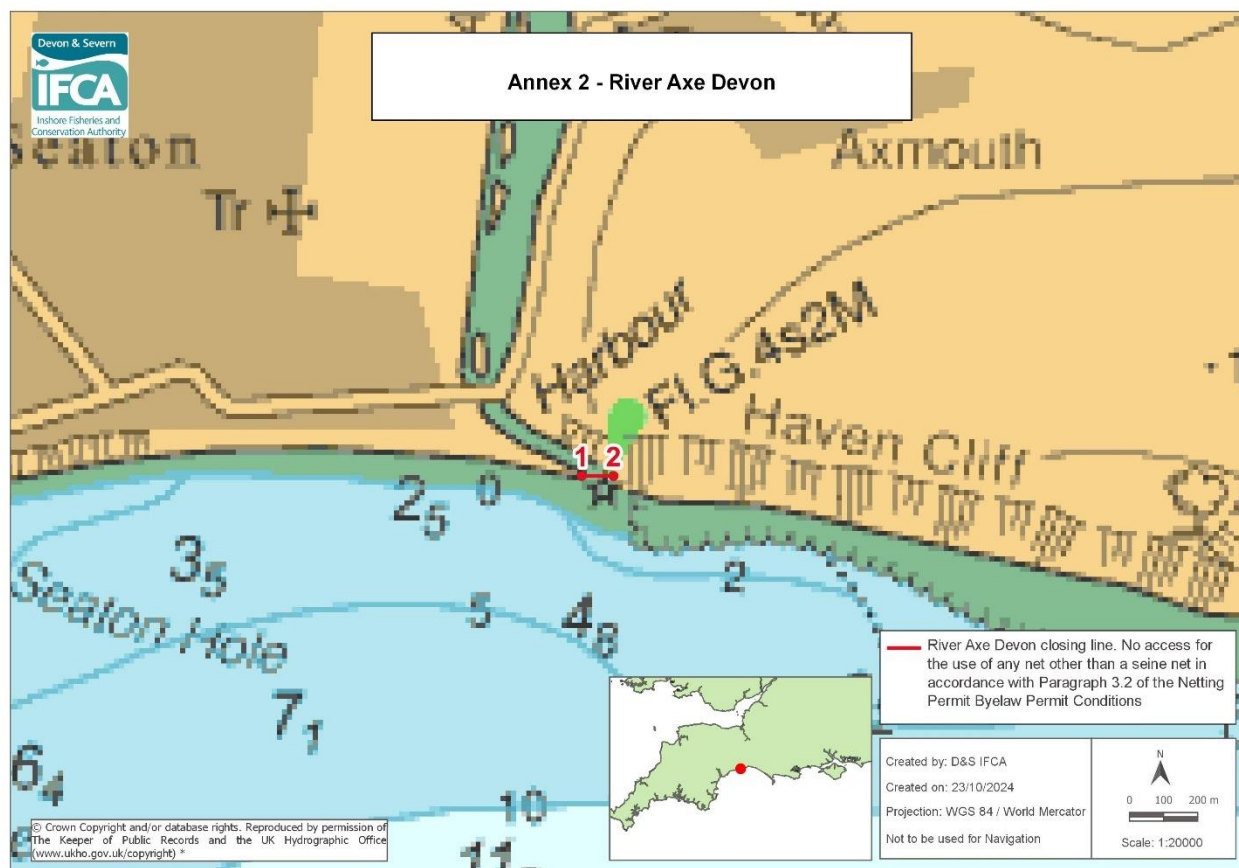
No access for the use of any net other than a seine net in accordance with paragraph 3.2 of the Netting Permit Byelaw Permit Conditions, within the D&S IFCA's District inside of a line drawn from Point 1 to Point 2.

Point Number	Latitude	Longitude
1	50° 40.726 N	003° 14.054 W
2	50° 40.735 N	003° 14.005 W

*www.ukho.gov.uk/copyright

All Positions are expressed in degrees, decimal minutes (DDM) and shall be measured according to the WGS84 Geographic Co-ordinate System

River Axe (Devon) Closing Line



Explanation of the Access Restrictions:

No nets can be used to the landward of the Annex 2 closing line other than a seine net for the targeting and capture of sand eel only.

If you intend to use a seine net in Annex 2 areas other restrictions apply, which are detailed in the Netting Permit Conditions.

No access for the use of any net other than a seine net in accordance with paragraph 3.2 of the Netting Permit Byelaw Permit Conditions, within the D&S IFCA's District inside of a line drawn from Point 1 to Point 2.

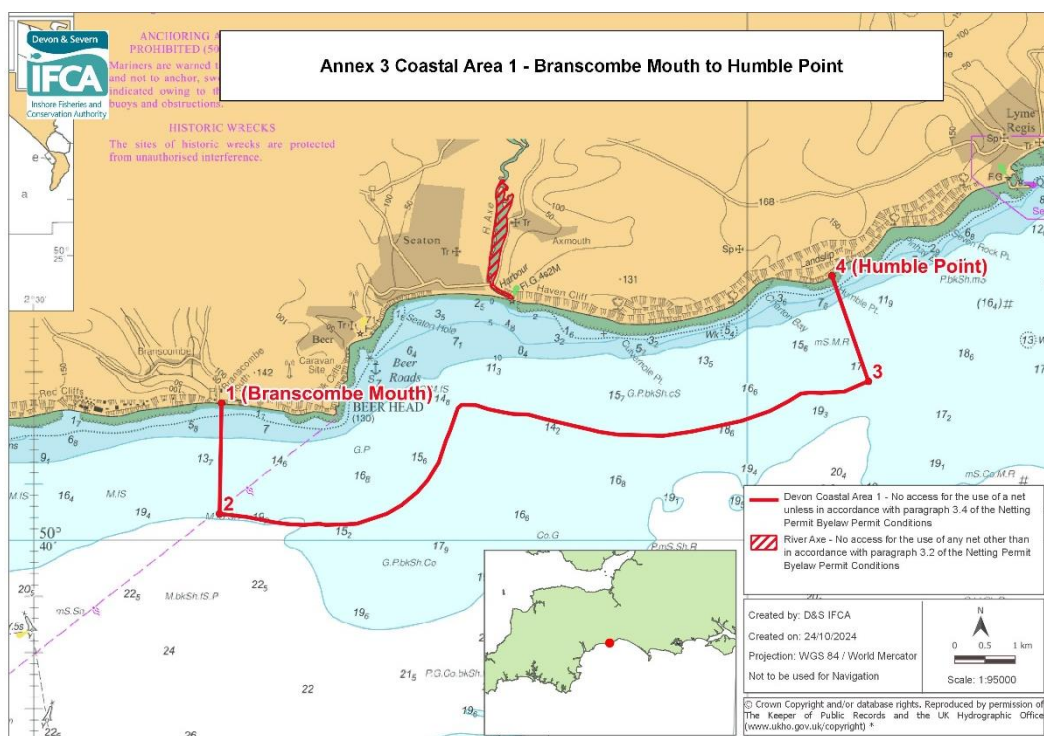
Point Number	Latitude	Longitude
1	50° 42.135 N	003° 03.354 W
2	50° 42.135 N	003° 03.274 W

*www.ukho.gov.uk/copyright

All Positions are expressed in degrees, decimal minutes (DDM) and shall be measured according to the WGS84 Geographic Co-ordinate System

Annex 3 - Devon Coastal Areas Netting Restrictions

Coastal Area 1 - Branscombe to Humble Point



Explanation of the Access Restrictions:

A fixed net can only be used in Coastal Areas (Annex 3) providing the headline of any fixed net is at least three metres below the surface of the water at any state of the tide.

A seine net can only be used in the Coastal Areas (Annex 3) providing that the seine net is attended for the entire duration that it is deployed in the water, and the seine net must be deployed in one continuous action without pause or delay.

A drift net can only be used in the Coastal Areas (Annex 3) providing that the drift net is attended for the entire duration of its use, with the Permit holder or Named representative remaining within 100 metres of the net. A drift net must, throughout the entirety of its use, be free of any contact with any part of the foreshore or seabed or any object or structure.

The red hatch area in the chart above is explained in Annex 2 River Axe. If you intend to use any net in Coastal Areas (Annex 3) other restrictions apply, which are detailed in the Netting Permit Conditions.

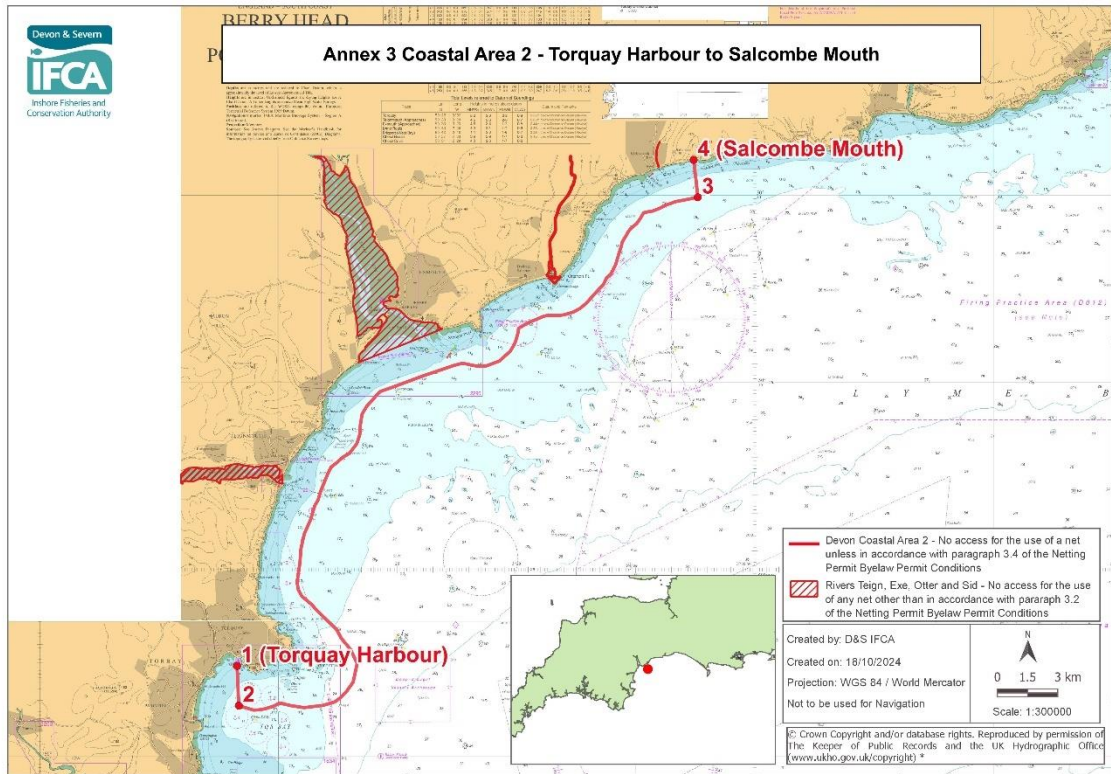
No access for the use of a net unless in accordance with paragraph 3.4 of the Netting Permit Byelaw Permit Conditions, within the D&S IFCA's District inside of a line drawn from Point 1 to Point 4. Between Points 2 and 3 the seaward boundary is one nautical mile seaward of the shore as defined by the lowest astronomical tide.

Point Number	Latitude	Longitude
1 (Branscombe Mouth)	50° 41.205 N	003° 07.374 W
2	50° 40.218 N	003° 07.401 W
3	50° 41.398 N	002° 58.306 W
4 (Humble Point)	50° 42.337 N	002° 58.817 W

*www.ukho.gov.uk/copyright

All Positions are expressed in degrees, decimal minutes (DDM) and shall be measured according to the WGS84 Geographic Co-ordinate System

Coastal Area 2 - Torquay Harbour to Salcombe Mouth



Explanation of the Access Restrictions:

A fixed net can only be used in Coastal Areas (Annex 3) providing the headline of any fixed net is at least three metres below the surface of the water at any state of the tide.

A seine net can only be used in the Coastal Areas (Annex 3) providing that the seine net is attended for the entire duration that it is deployed in the water, and the seine net must be deployed in one continuous action without pause or delay.

A drift net can only be used in the Coastal Areas (Annex 3) providing that the drift net is attended for the entire duration of its use, with the Permit holder or Named representative remaining within 100 metres of the net. A drift net must, throughout the entirety of its use, be free of any contact with any part of the foreshore or seabed or any object or structure.

The red hatch areas in the chart above are explained in Annex 2 Rivers Teign, Exe, Otter and Sid. If you intend to use any net in Coastal Areas (Annex 3) other restrictions apply, which are detailed in the Netting Permit Conditions.

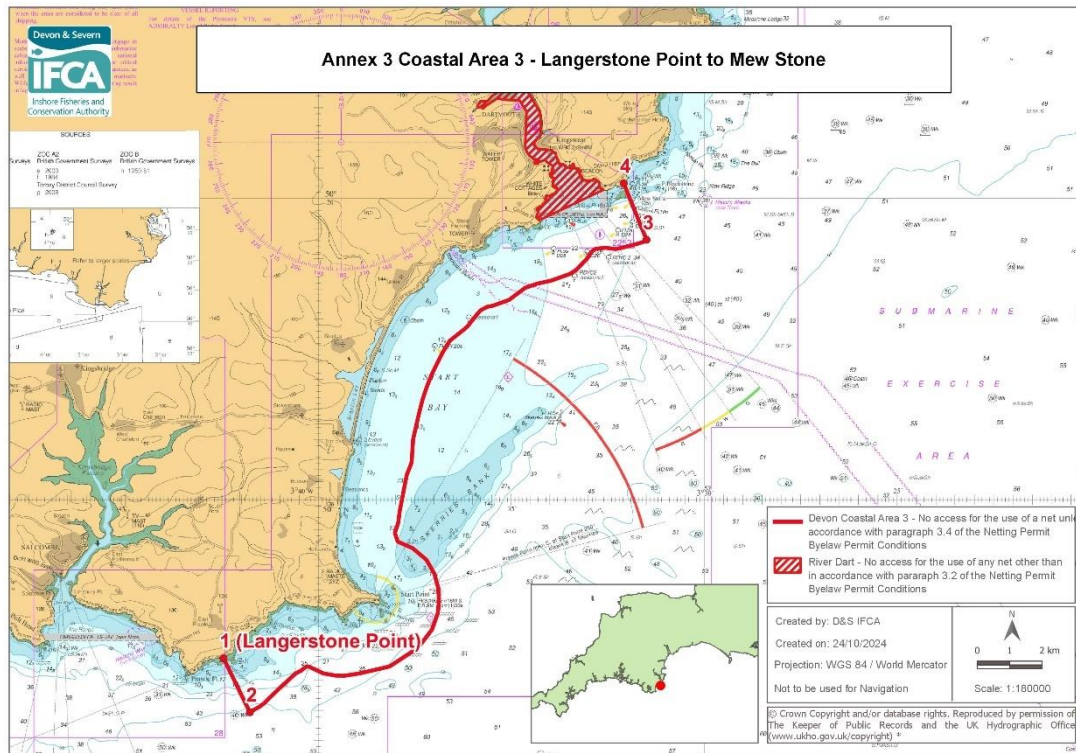
No access for the use of a net unless in accordance with paragraph 3.4 of the Netting Permit Byelaw Permit Conditions, within the D&S IFCA's District inside of a line drawn from Point 1 to Point 4. Between Points 2 and 3 the seaward boundary is one nautical mile seaward of the shore as defined by the lowest astronomical tide.

Point Number	Latitude	Long
1 (Torquay Harbour)	50° 27.413 N	003° 31.719 W
2	50° 26.347 N	003° 31.649 W
3	50° 39.925 N	003° 12.399 W
4 (Salcombe Mouth)	50° 40.920 N	003° 12.571 W

*www.ukho.gov.uk/copyright

All Positions are expressed in degrees, decimal minutes (DDM) and shall be measured according to the WGS84 Geographic Co-ordinate System

Coastal Area 3 - Langerstone Point to Mew Stone



Explanation of the Access Restrictions:

A fixed net can only be used in Coastal Areas (Annex 3) providing the headline of any fixed net is at least three metres below the surface of the water at any state of the tide.

A seine net can only be used in the Coastal Areas (Annex 3) providing that the seine net is attended for the entire duration that it is deployed in the water, and the seine net must be deployed in one continuous action without pause or delay.

A drift net can only be used in the Coastal Areas (Annex 3) providing that the drift net is attended for the entire duration of its use, with the Permit holder or Named representative remaining within 100 metres of the net. A drift net must, throughout the entirety of its use, be free of any contact with any part of the foreshore or seabed or any object or structure.

The red hatch area in the chart above is explained in Annex 2 River Dart. If you intend to use any net in Coastal Areas (Annex 3) other restrictions apply, which are detailed in the Netting Permit Conditions.

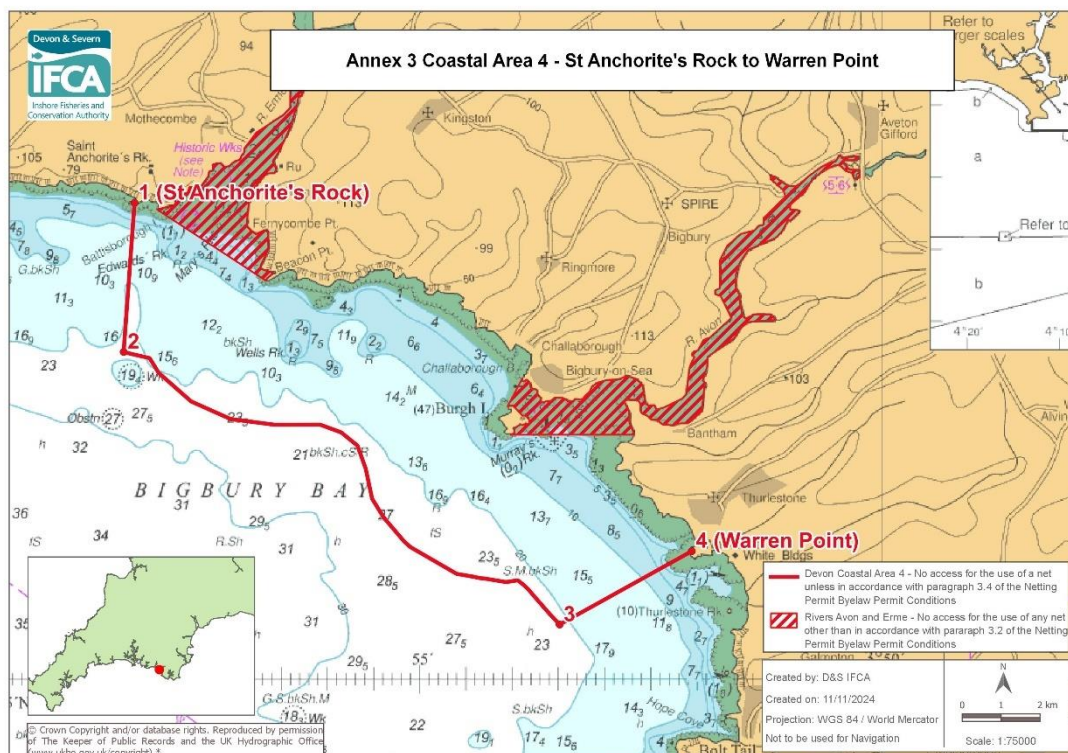
No access for the use of a net unless in accordance with paragraph 3.4 of the Netting Permit Byelaw Permit Conditions, within the D&S IFCA's District inside of a line drawn from Point 1 to Point 4. Between Points 2 and 3 the seaward boundary is one nautical mile seaward of the shore as defined by the lowest astronomical tide.

Point Number	Latitude	Longitude
1 (Langerstone Point)	50° 12.363 N	003° 42.455 W
2	50° 11.464 N	003° 41.769 W
3	50° 19.307 N	003° 31.491 W
4	50° 20.242 N	003° 32.082 W

*www.ukho.gov.uk/copyright

All Positions are expressed in degrees, decimal minutes (DDM) and shall be measured according to the WGS84 Geographic Co-ordinate System

Coastal Area 4 - St Anchorite's Rock to Warren Point



Explanation of the Access Restrictions:

A fixed net can only be used in Coastal Areas (Annex 3) providing the headline of any fixed net is at least three metres below the surface of the water at any state of the tide.

A seine net can only be used in the Coastal Areas (Annex 3) providing that the seine net is attended for the entire duration that it is deployed in the water, and the seine net must be deployed in one continuous action without pause or delay.

A drift net can only be used in the Coastal Areas (Annex 3) providing that the drift net is attended for the entire duration of its use, with the Permit holder or Named representative remaining within 100 metres of the net. A drift net must, throughout the entirety of its use, be free of any contact with any part of the foreshore or seabed or any object or structure.

The red hatch areas in the chart above are explained in Annex 2 Rivers Avon and Erme. If you intend to use any net in Coastal Areas (Annex 3) other restrictions apply, which are detailed in the Netting Permit Conditions.

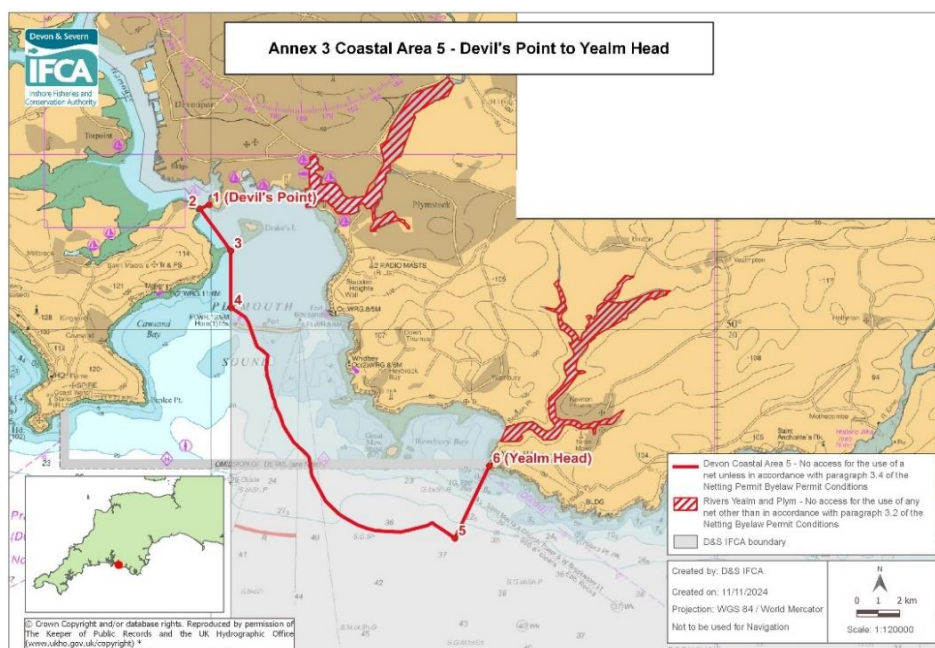
No access for the use of a net unless in accordance with paragraph 3.4 of the Netting Permit Byelaw Permit Conditions, within the D&S IFCA's District inside of a line drawn from Point 1 to Point 4. Between Points 2 and 3 the seaward boundary is one nautical mile seaward of the shore as defined by the lowest astronomical tide.

Point Number	Latitude	Longitude
1 (St Anchorite's Rock)	50° 18.289 N	003° 58.077 W
2	50° 17.257 N	003° 58.195 W
3	50° 15.370 N	003° 53.483 W
4 (Warren Point)	50° 15.878 N	003° 52.055 W

*www.ukho.gov.uk/copyright

All Positions are expressed in degrees, decimal minutes (DDM) and shall be measured according to the WGS84 Geographic Co-ordinate System

Coastal Area 5 - Devil's Point to Yealm Head



Explanation of the Access Restrictions:

A fixed net can only be used in Coastal Areas (Annex 3) providing the headline of any fixed net is at least three metres below the surface of the water at any state of the tide.

A seine net can only be used in the Coastal Areas (Annex 3) providing that the seine net is attended for the entire duration that it is deployed in the water, and the seine net must be deployed in one continuous action without pause or delay.

A drift net can only be used in the Coastal Areas (Annex 3) providing that the drift net is attended for the entire duration of its use, with the Permit holder or Named representative remaining within 100 metres of the net. A drift net must, throughout the entirety of its use, be free of any contact with any part of the foreshore or seabed or any object or structure.

The red hatch areas in the chart above are explained in Annex 2 River Yealm and Plym. If you intend to use any net in Coastal Areas (Annex 3) other restrictions apply, which are detailed in the Netting Permit Conditions.

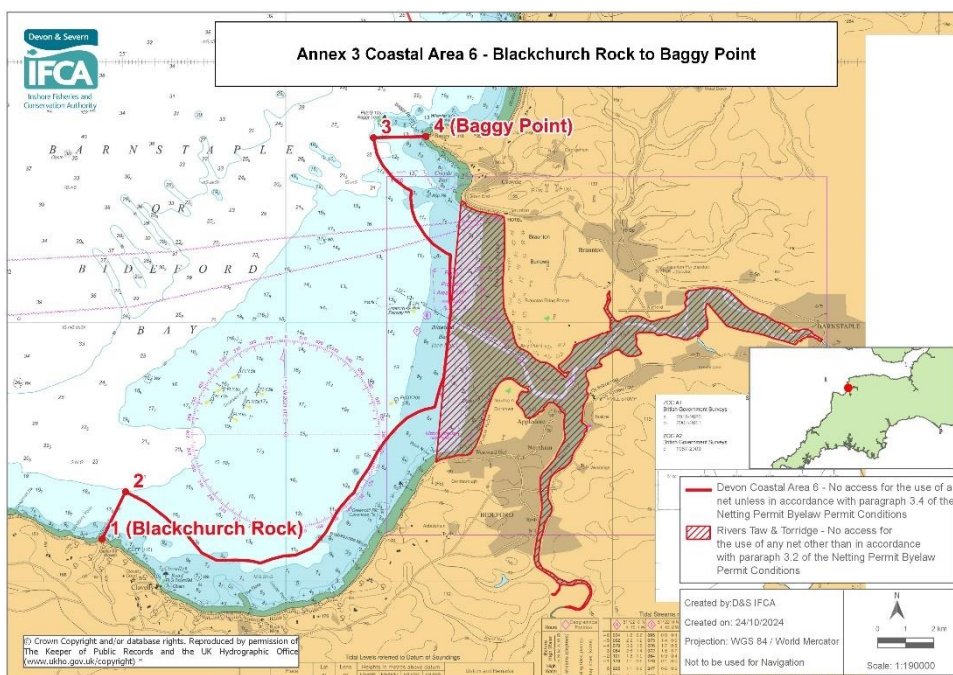
No access for the use of a net unless in accordance with paragraph 3.4 of the Netting Permit Byelaw Permit Conditions, within the D&S IFCA's District inside of a line drawn from Point 1 to Point 6. Between Points 2 and 4 the seaward boundary follows the boundary with CIFCA's District. Between Points 4 and 5 the seaward boundary follows a line drawn one nautical mile seaward of the shore as defined by the lowest astronomical tide within the D&S IFCA's District.

Point Number	Latitude	Longitude
1 (Devil's Point)	50° 21.592 N	004° 10.026 W
2	50° 21.541 N	004° 10.208 W
3	50° 21.000 N	004° 09.600 W
4	50° 20.269 N	004° 09.600 W
5	50° 17.300 N	004° 05.176 W
6 (Yealm Head)	50° 18.233 N	004° 04.494 W

*www.ukho.gov.uk/copyright

All Positions are expressed in degrees, decimal minutes (DDM) and shall be measured according to the WGS84 Geographic Co-ordinate System

Coastal Area 6 - Blackchurch Rock to Baggy Point



Explanation of the Access Restrictions:

A fixed net can only be used in Coastal Areas (Annex 3) providing the headline of any fixed net is at least three metres below the surface of the water at any state of the tide.

A seine net can only be used in the Coastal Areas (Annex 3) providing that the seine net is attended for the entire duration that it is deployed in the water, and the seine net must be deployed in one continuous action without pause or delay.

A drift net can only be used in the Coastal Areas (Annex 3) providing that the drift net is attended for the entire duration of its use, with the Permit holder or Named representative remaining within 100 metres of the net. A drift net must, throughout the entirety of its use, be free of any contact with any part of the foreshore or seabed or any object or structure.

The red hatch area in the chart above is explained in Annex 2 Rivers Taw and Torridge. If you intend to use any net in Coastal Areas (Annex 3) other restrictions apply, which are detailed in the Netting Permit Conditions.

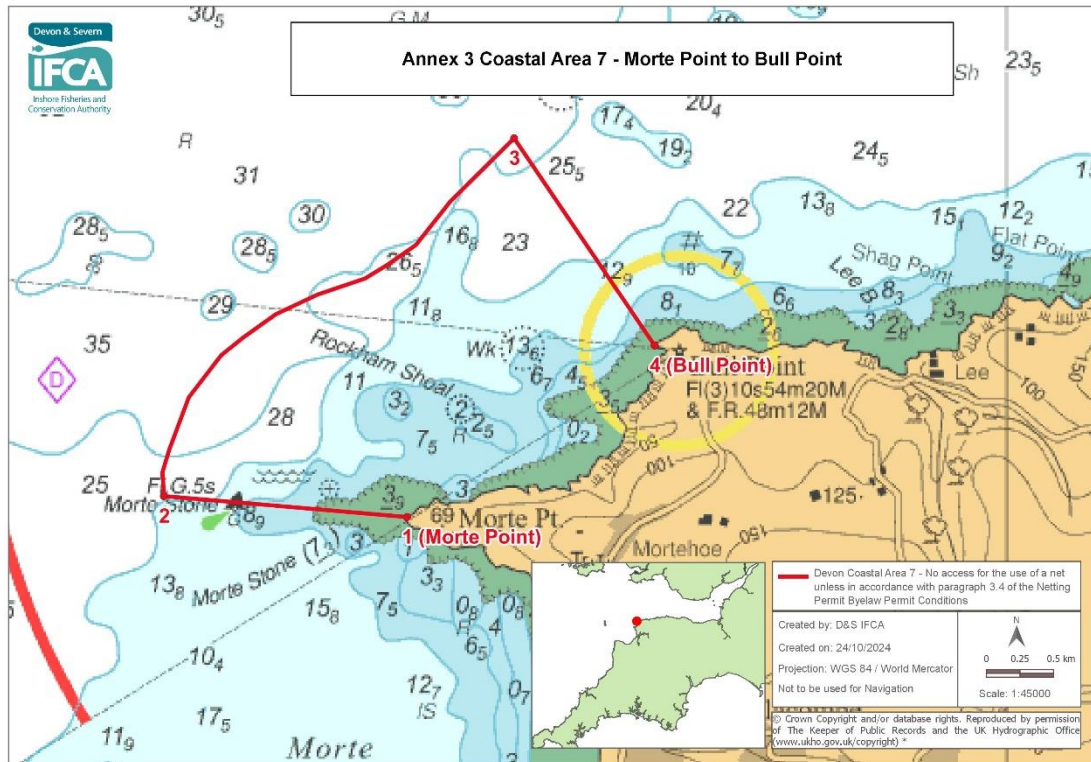
No access for the use of a net unless in accordance with paragraph 3.4 of the Netting Permit Byelaw Permit Conditions, within the D&S IFCA's District inside of a line drawn from Point 1 to Point 4. Between Points 2 and 3 the seaward boundary is one nautical mile seaward of the shore as defined by the lowest astronomical tide.

Point Number	Latitude	Longitude
1(Blackchurch Rock)	51° 00.813 N	004° 25.616 W
2	51° 01.727 N	004° 24.899 W
3	51° 08.540 N	004° 17.313 W
4 (Baggy Point)	51° 08.564 N	004° 15.702 W

*www.ukho.gov.uk/copyright

All Positions are expressed in degrees, decimal minutes (DDM) and shall be measured according to the WGS84 Geographic Co-ordinate System

Coastal Area 7- Morte Point to Bull Point



Explanation of the Access Restrictions:

A fixed net can only be used in Coastal Areas (Annex 3) providing the headline of any fixed net is at least three metres below the surface of the water at any state of the tide.

A seine net can only be used in the Coastal Areas (Annex 3) providing that the seine net is attended for the entire duration that it is deployed in the water, and the seine net must be deployed in one continuous action without pause or delay.

A drift net can only be used in the Coastal Areas (Annex 3) providing that the drift net is attended for the entire duration of its use, with the Permit holder or Named representative remaining within 100 metres of the net. A drift net must, throughout the entirety of its use, be free of any contact with any part of the foreshore or seabed or any object or structure.

If you intend to use any net in Coastal Areas (Annex 3) other restrictions apply, which are detailed in the Netting Permit Conditions.

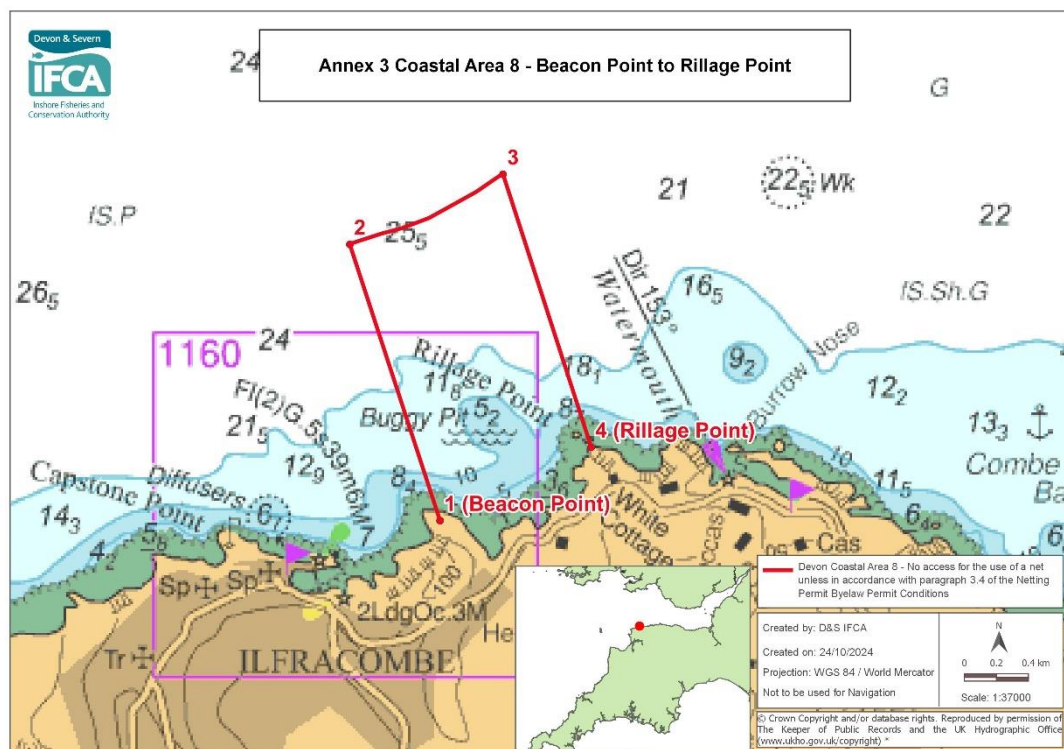
No access for the use of a net unless in accordance with paragraph 3.4 of the Netting Permit Byelaw Permit Conditions, within the D&S IFCA's District inside of a line drawn from Point 1 to Point 4. Between Points 2 and 3 the seaward boundary is one nautical mile seaward of the shore as defined by the lowest astronomical tide.

Point Number	Latitude	Longitude
1 (Morte Point)	51° 11.271 N	004° 13.833 W
2	51° 11.355 N	004° 15.387 W
3	51° 12.790 N	004° 13.148 W
4 (Bull Point)	51° 11.959 N	004° 12.250 W

*www.ukho.gov.uk/copyright

All Positions are expressed in degrees, decimal minutes (DDM) and shall be measured according to the WGS84 Geographic Co-ordinate System

Coastal Area 8 - Beacon Point to Rillage Point



Explanation of the Access Restrictions:

A fixed net can only be used in Coastal Areas (Annex 3) providing the headline of any fixed net is at least three metres below the surface of the water at any state of the tide.

A seine net can only be used in the Coastal Areas (Annex 3) providing that the seine net is attended for the entire duration that it is deployed in the water, and the seine net must be deployed in one continuous action without pause or delay.

A drift net can only be used in the Coastal Areas (Annex 3) providing that the drift net is attended for the entire duration of its use, with the Permit holder or Named representative remaining within 100 metres of the net. A drift net must, throughout the entirety of its use, be free of any contact with any part of the foreshore or seabed or any object or structure.

If you intend to use any net in Coastal Areas (Annex 3) other restrictions apply, which are detailed in the Netting Permit Conditions.

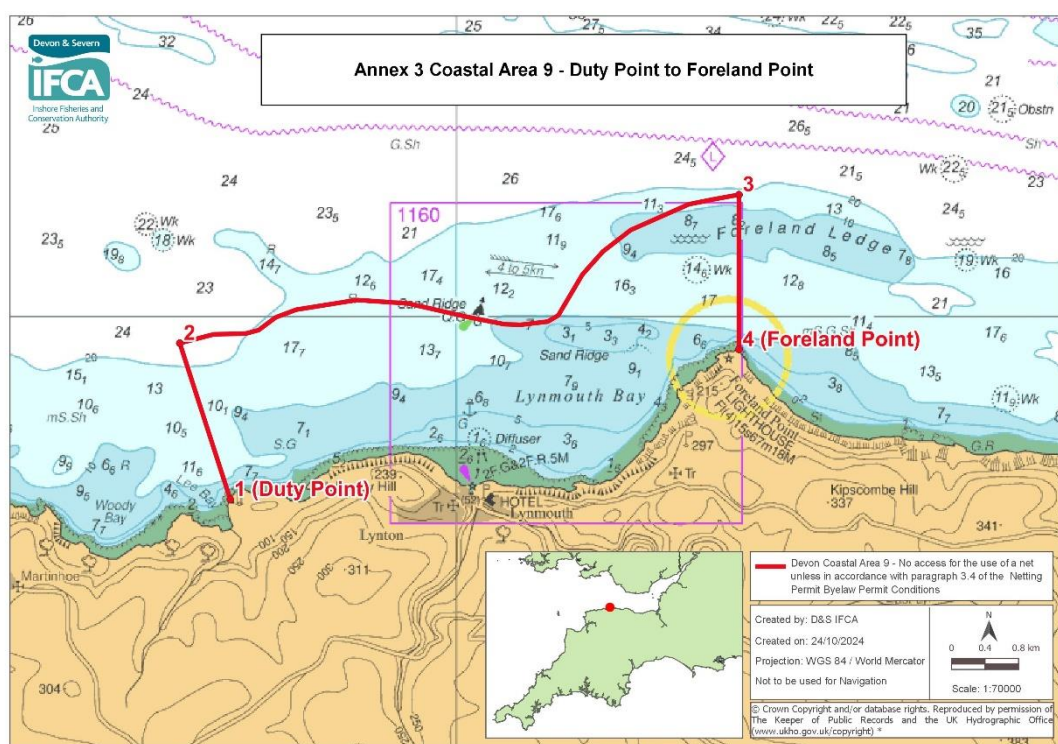
No access for the use of a net unless in accordance with paragraph 3.4 of the Netting Permit Byelaw Permit Conditions, within the D&S IFCA's District inside of a line drawn from Point 1 to Point 4. Between Points 2 and 3 the seaward boundary is one nautical mile seaward of the shore as defined by the lowest astronomical tide.

Point Number	Latitude	Longitude
1 (Beacon Point)	51° 12.791'N	004° 06.134'W
2	51° 13.720'N	004° 06.618'W
3	51° 13.956'N	004° 05.796'W
4 (Rillage Point)	51° 13.038'N	004° 05.323'W

*www.ukho.gov.uk/copyright

All Positions are expressed in degrees, decimal minutes (DDM) and shall be measured according to the WGS84 Geographic Co-ordinate System

Coastal Area 9 - Duty Point to Foreland Point



Explanation of the Access Restrictions:

A fixed net can only be used in Coastal Areas (Annex 3) providing the headline of any fixed net is at least three metres below the surface of the water at any state of the tide.

A seine net can only be used in the Coastal Areas (Annex 3) providing that the seine net is attended for the entire duration that it is deployed in the water, and the seine net must be deployed in one continuous action without pause or delay.

A drift net can only be used in the Coastal Areas (Annex 3) providing that the drift net is attended for the entire duration of its use, with the Permit holder or Named representative remaining within 100 metres of the net. A drift net must, throughout the entirety of its use, be free of any contact with any part of the foreshore or seabed or any object or structure.

If you intend to use any net in Coastal Areas (Annex 3) other restrictions apply, which are detailed in the Netting Permit Conditions.

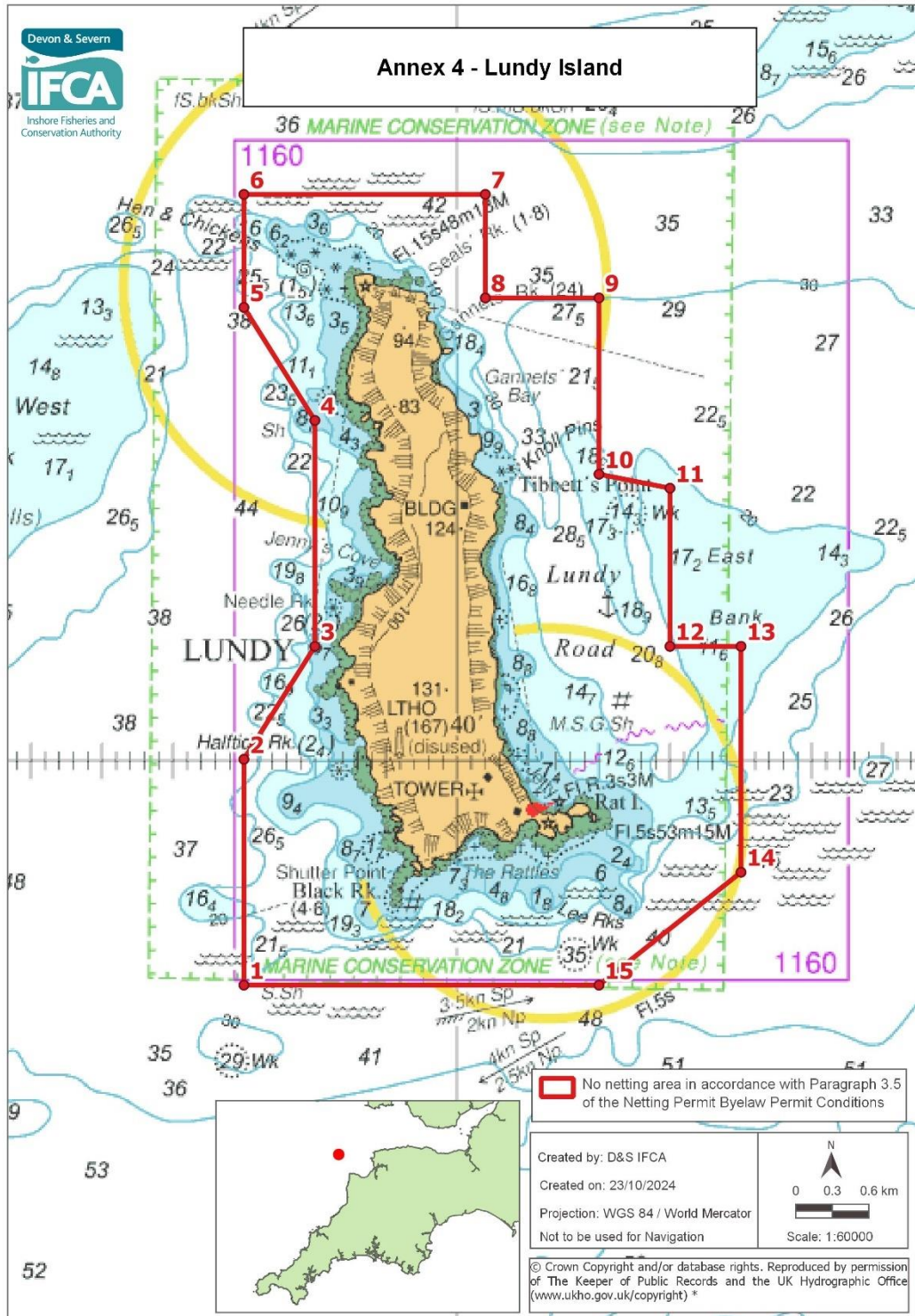
No access for the use of a net unless in accordance with paragraph 3.4 of the Netting Permit Byelaw Permit Conditions, within the D&S IFCA's District inside of a line drawn from Point 1 to Point 4. Between Points 2 and 3 the seaward boundary is one nautical mile seaward of the shore as defined by the lowest astronomical tide.

Point Number	Latitude	Longitude
1 (Duty Point)	51° 13.819 N	003° 52.319 W
2	51° 14.823 N	003° 52.837 W
3	51° 15.777 N	003° 47.104 W
4 (Foreland Point)	51° 14.783 N	003° 47.104 W

*www.ukho.gov.uk/copyright

All Positions are expressed in degrees, decimal minutes (DDM) and shall be measured according to the WGS84 Geographic Co-ordinate System

Annex 4 - Lundy Island No Netting Area



Explanation of the Access Restrictions:

No net of any type can be used in an area around Lundy Island (Annex 4).

*www.ukho.gov.uk/copyright

All Positions are expressed in degrees, decimal minutes (DDM) and shall be measured according to the WGS84 Geographic Co-ordinate System

No access for the use of any net in accordance with paragraph 3.5 of the Netting Permit Byelaw Permit Conditions, within the D&S IFCA's District outlined by the following points plotted sequentially from Point 1 to Point 15, then returning to Point 1.

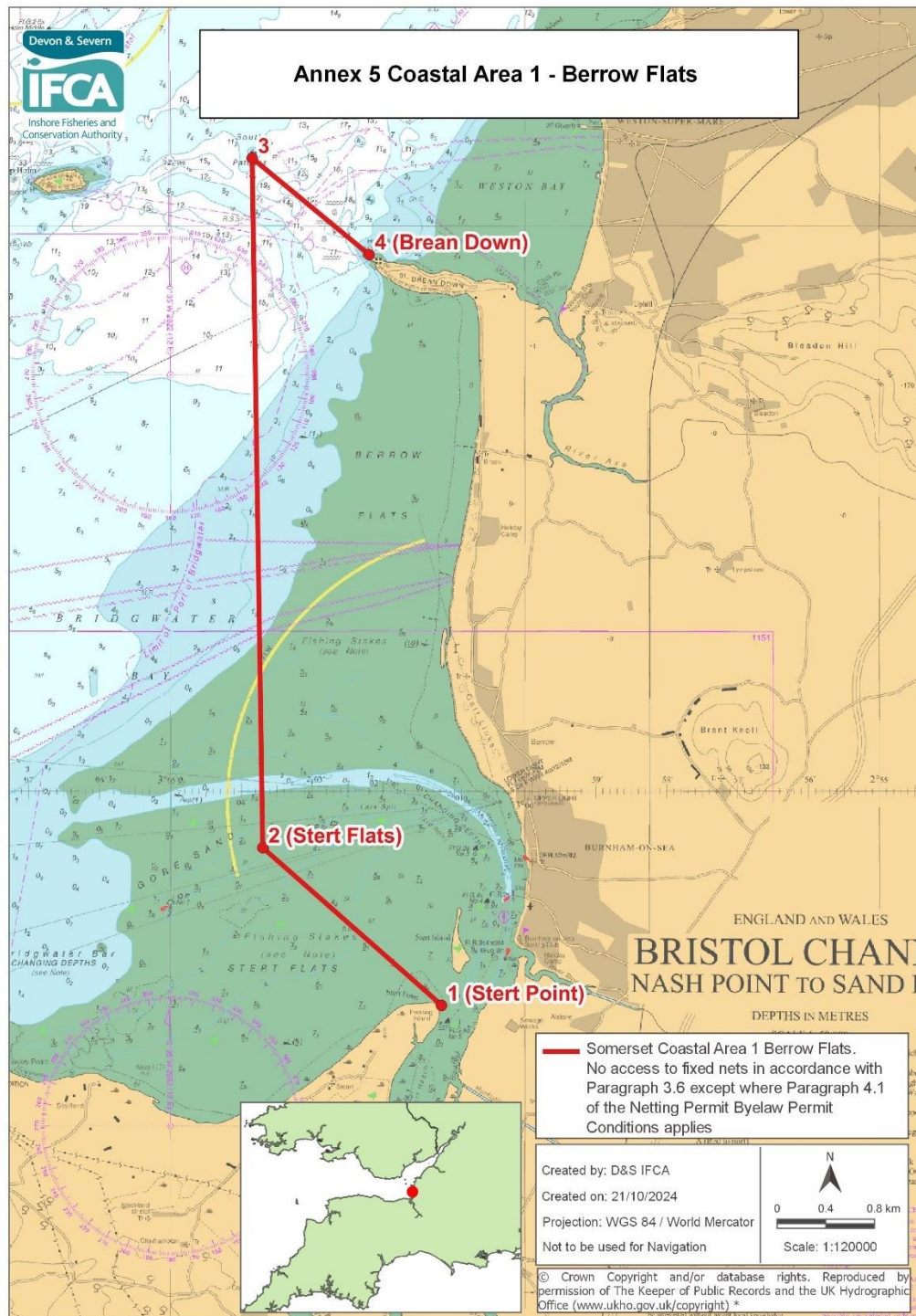
Point Number	Latitude	Longitude
1	51° 09.000 N	004° 41.500 W
2	51° 10.000 N	004° 41.500 W
3	51° 10.500 N	004° 41.000 W
4	51° 11.500 N	004° 41.000 W
5	51° 12.000 N	004° 41.500 W
6	51° 12.500 N	004° 41.500 W
7	51° 12.500 N	004° 39.800 W
8	51° 12.042 N	004° 39.800 W
9	51° 12.042 N	004° 39.000 W
10	51° 11.262 N	004° 39.000 W
11	51° 11.200 N	004° 38.500 W
12	51° 10.500 N	004° 38.500 W
13	51° 10.500 N	004° 38.000 W
14	51° 09.500 N	004° 38.000 W
15	51° 09.000 N	004° 39.000 W

*www.ukho.gov.uk/copyright

All Positions are expressed in degrees, decimal minutes (DDM) and shall be measured according to the WGS84 Geographic Co-ordinate System

Annex 5 - Somerset Coastal Areas Netting Restrictions

Coastal Area 1 - Berrow Flats



Explanation of the Access Restrictions:

A fixed net can be only used in the Somerset Coastal Area 1 at Berrow Flats (Annex 5) between 30th September and 1st April. No fixed net can be used outside this time period.

*www.ukho.gov.uk/copyright

All Positions are expressed in degrees, decimal minutes (DDM) and shall be measured according to the WGS84 Geographic Co-ordinate System

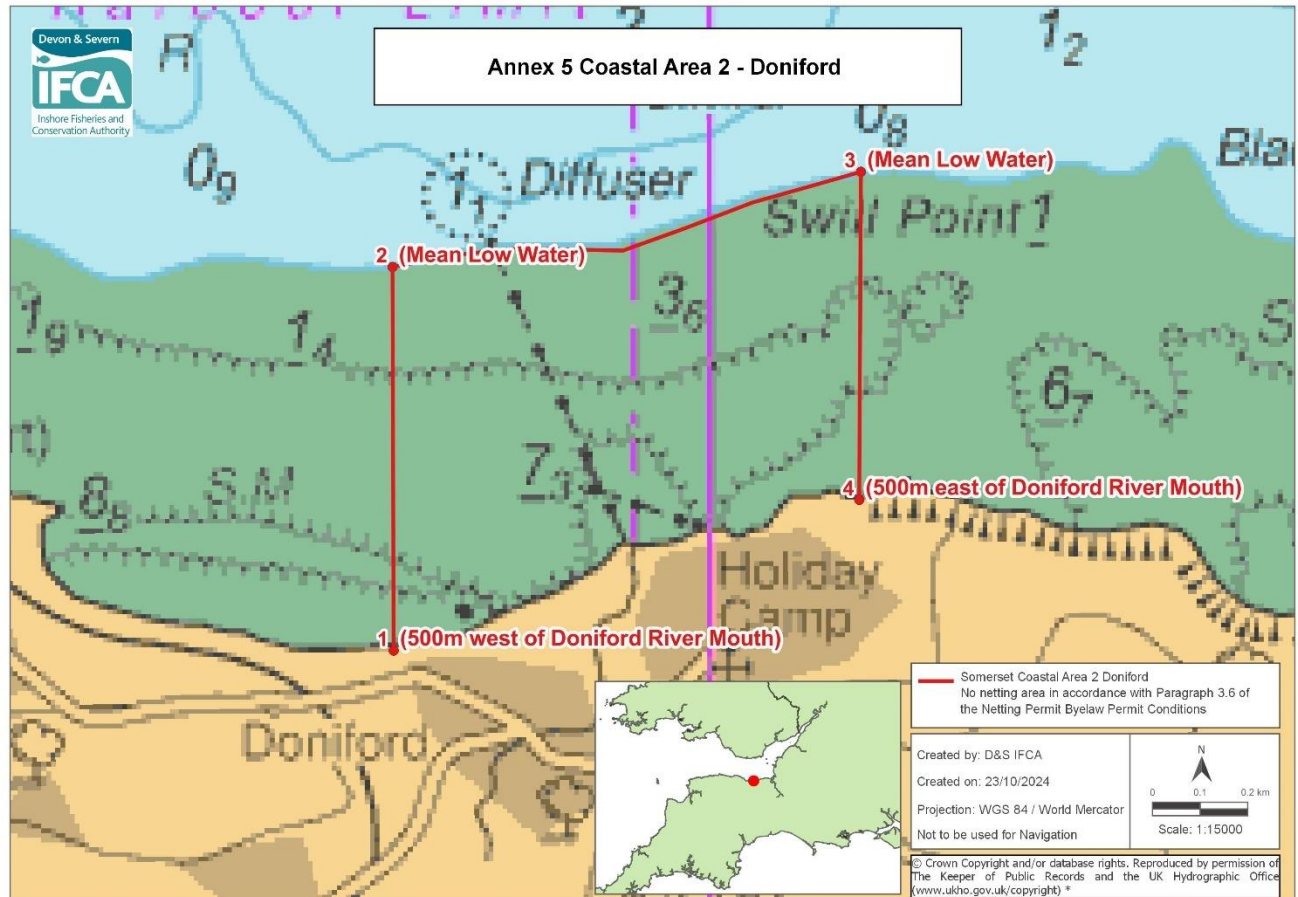
No access to fixed nets in accordance with paragraph 3.6 of the Netting Permit Byelaw Permit Conditions (except where paragraph 4.1 of the Netting Permit Byelaw Permit Conditions applies) within the D&S IFCA's District outlined by the following points plotted sequentially from Point 1 to Point 4, then returning to Point 1. The landward boundary follows Mean High Water.

Point Number	Latitude	Longitude
1 (Stert Point)	51° 13.102 N	003° 01.177 W
2 (Stert Flats)	51° 14.500 N	003° 03.700 W
3	51° 20.600 N	003° 03.850 W
4 (Brean Down)	51° 19.747 N	003° 02.199 W

*www.ukho.gov.uk/copyright

All Positions are expressed in degrees, decimal minutes (DDM) and shall be measured according to the WGS84 Geographic Co-ordinate System

Coastal Area 2 - Doniford



Explanation of the Access Restrictions:

No fixed net can be used in Somerset Coastal Area Doniford (Annex 5) at any time.

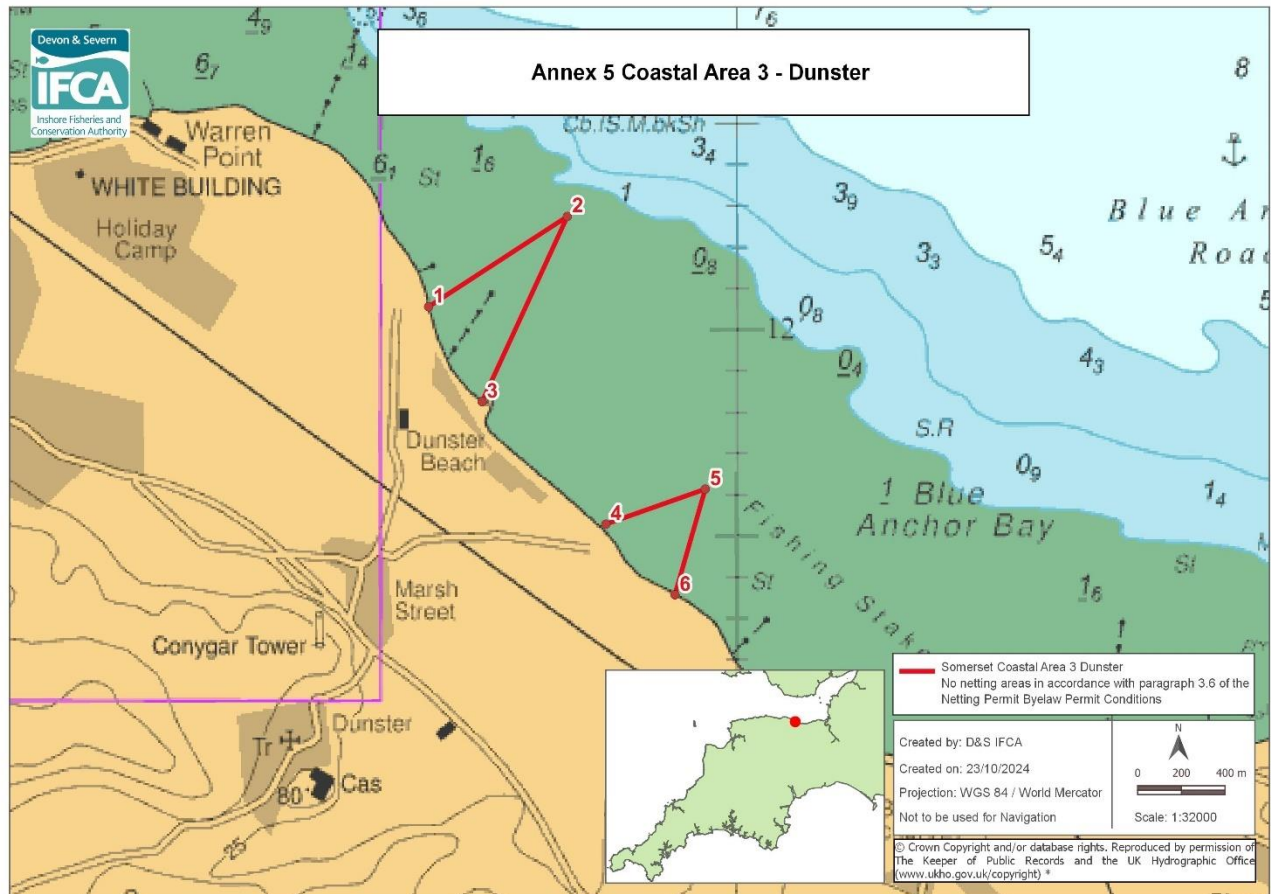
No access to fixed nets in accordance with paragraph 3.6 of the Netting Permit Byelaw Permit Conditions, within the D&S IFCA's District outlined by the following points plotted sequentially from Point 1 to Point 4, then returning to Point 1. The landward boundary follows Mean High Water.

Point Number	Latitude	Longitude
1	51° 10.764 N	003° 18.570 W
2	51° 11.199 N	003° 18.572 W
3	51° 11.307 N	003° 17.727 W
4	51° 10.935 N	003° 17.730 W

*www.ukho.gov.uk/copyright

All Positions are expressed in degrees, decimal minutes (DDM) and shall be measured according to the WGS84 Geographic Co-ordinate System

Coastal Area 3 - Dunster



Explanation of the Access Restrictions:

No fixed net can be used in Somerset Coastal Area Dunster (Annex 5) at any time.

No access to fixed nets in accordance with paragraph 3.6 of the Netting Permit Byelaw Permit Conditions, within the D&S IFCA's District outlined by the following points plotted sequentially from Point 1 to Point 3, then returning to Point 1, and from Point 4 to Point 6 then returning to Point 4. The landward boundary in both areas follows Mean High Water.

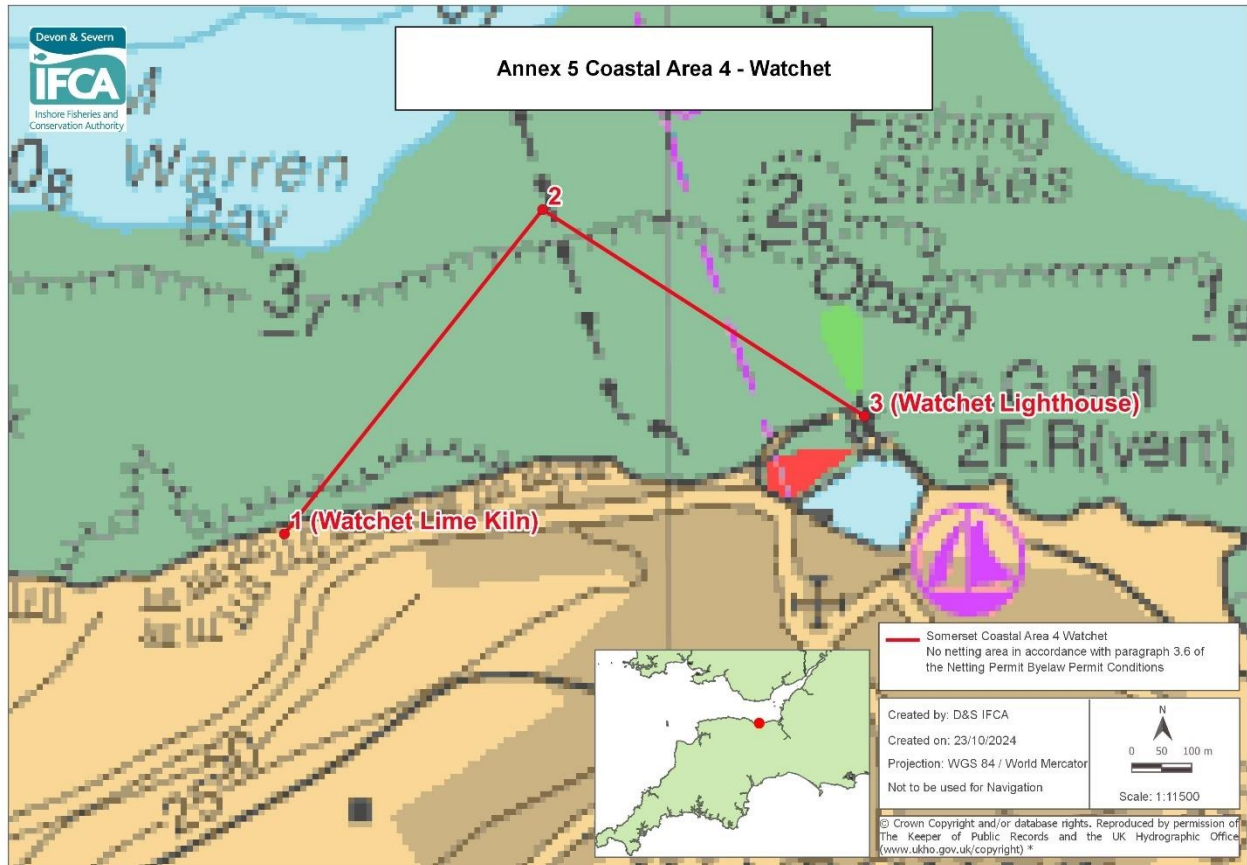
Point Number	Latitude	Longitude
1	51° 12.056 N	003° 26.211 W
2	51° 12.275 N	003° 25.666 W
3	51° 11.826 N	003° 26.001 W

Point Number	Latitude	Longitude
4	51° 11.529 N	003° 25.515 W
5	51° 11.614 N	003° 25.125 W
6	51° 11.358 N	003° 25.244 W

*www.ukho.gov.uk/copyright

All Positions are expressed in degrees, decimal minutes (DDM) and shall be measured according to the WGS84 Geographic Co-ordinate System

Coastal Area 4 - Watchet



Explanation of the Access Restrictions:

No fixed net can be used in Somerset Coastal Area Watchet (Annex 5) at any time.

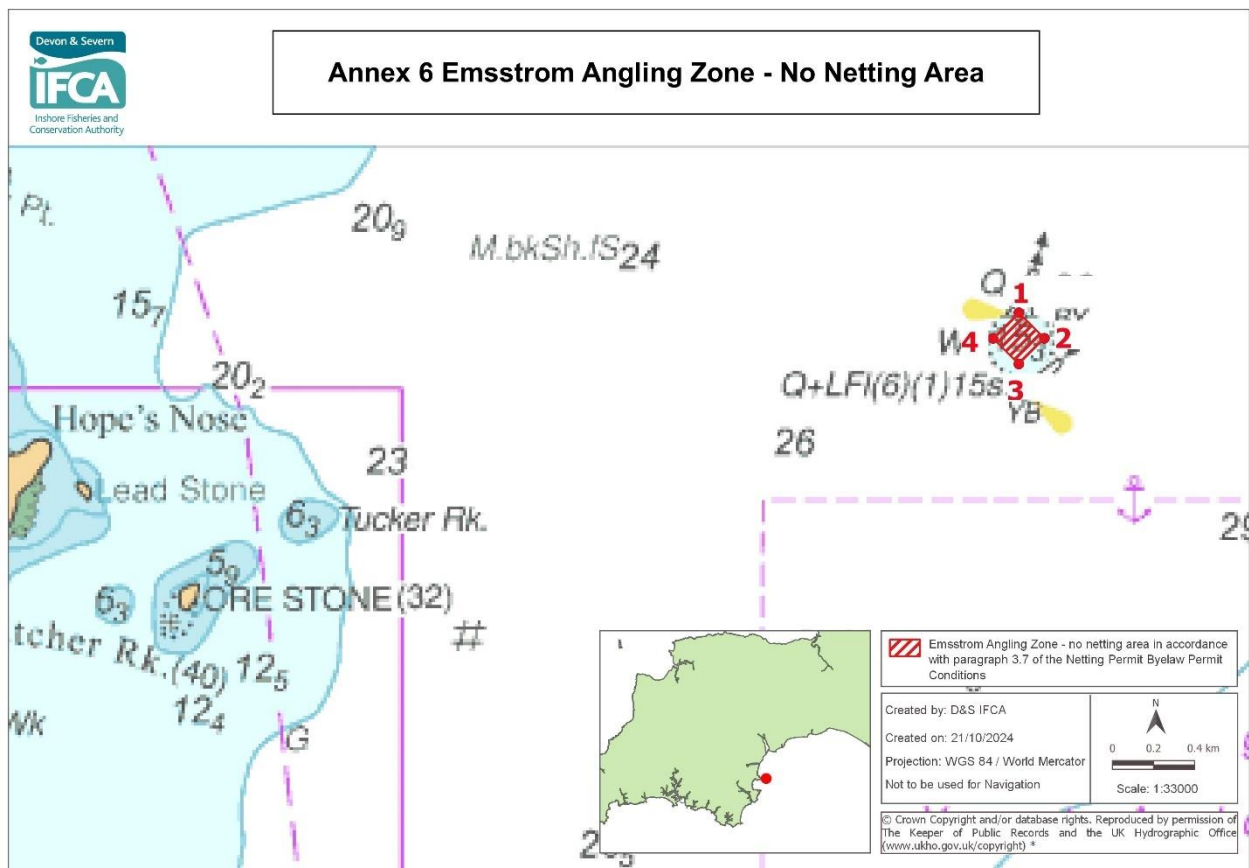
No access to fixed nets in accordance with paragraph 3.6 of the Netting Permit Byelaw Permit Conditions, within the D&S IFCA's District outlined by the following points plotted sequentially from Point 1 to Point 3, then returning to Point 1. The landward boundary follows Mean High Water.

Point Number	Latitude	Longitude
1 (Watchet Lime Kiln)	51° 10.928 N	003° 20.550 W
2	51° 11.220 N	003° 20.180 W
3 (Watchet Lighthouse)	51° 11.034 N	003° 19.719 W

*www.ukho.gov.uk/copyright

All Positions are expressed in degrees, decimal minutes (DDM) and shall be measured according to the WGS84 Geographic Co-ordinate System

Annex 6 - Emsstrom Angling Zone No Netting Area



Explanation of the Access Restrictions:

No net of any type can be used in the Emsstrom Angling Zone (Annex 6).

No access for the use of any net in accordance with paragraph 3.7 of the Netting Permit Byelaw Permit Conditions, within the D&S IFCA's District outlined by the following points plotted sequentially from Point 1 to Point 4, then returning to Point 1.

Point Number	Latitude	Longitude
1	50° 28.167 N	003° 24.860 W
2	50° 28.100 N	003° 24.755 W
3	50° 28.033 N	003° 24.860 W
4	50° 28.100 N	003° 24.966 W

*www.ukho.gov.uk/copyright

All Positions are expressed in degrees, decimal minutes (DDM) and shall be measured according to the WGS84 Geographic Co-ordinate System