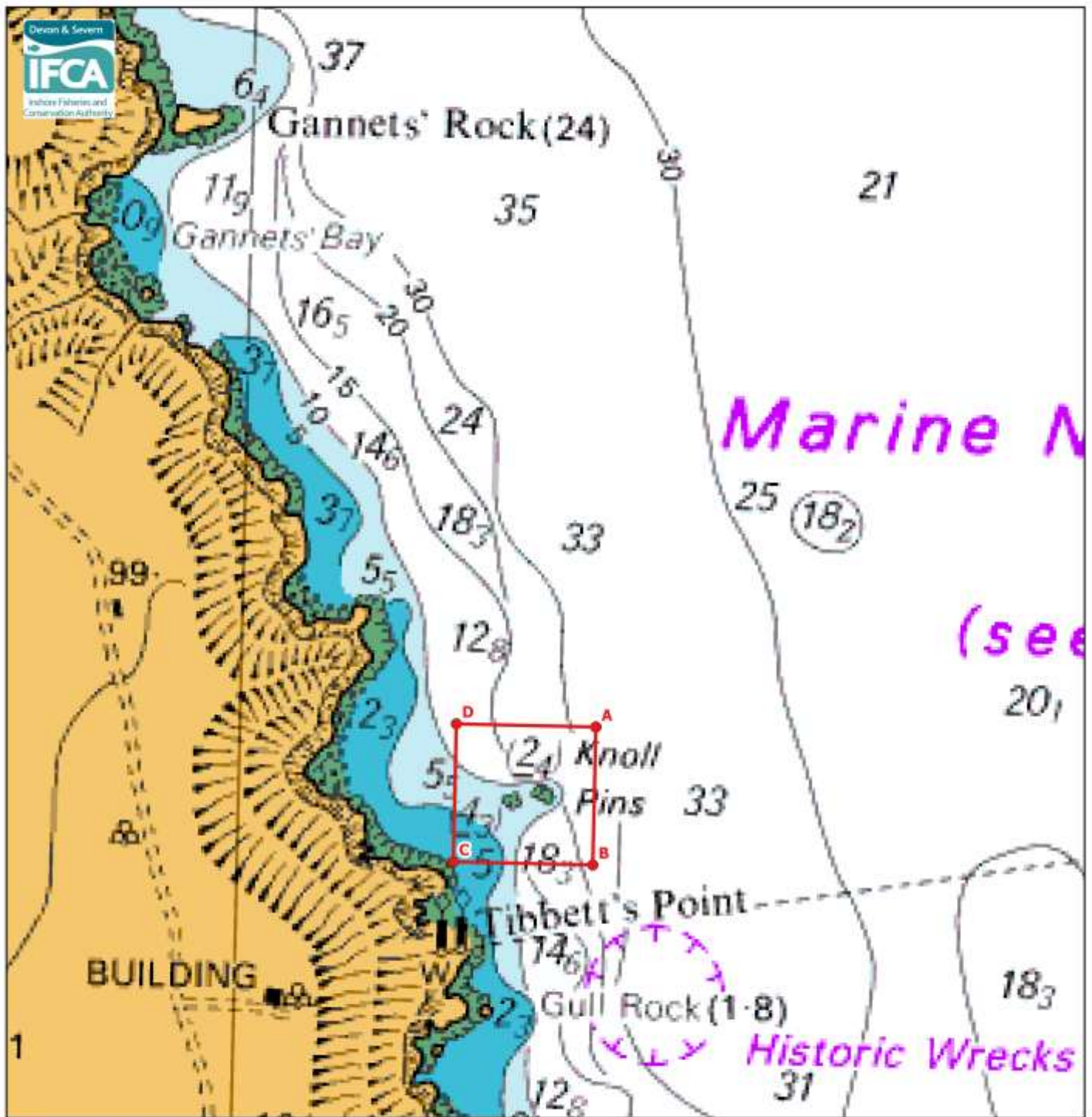


Annex 1 Chart of Knoll Pins (Lundy Island) - No removal of any sea fish resources around Knoll Pins, including the use of store pots



 No removal of any sea fish resources around Knoll Pins, including the use of store pots

**Annex 1 Knoll Pins – No removal of any sea fish resources around
Knoll Pins, including the use of store pots**

Latitude and Longitude positions

Point	Latitude	Longitude
A	51°11.346'N	004°39.550'W
B	51°11.238'N	004°39.550'W
C	51°11.238'N	004°39.726'W
D	51°11.346'N	004°39.726'W

Archive & Reference Only

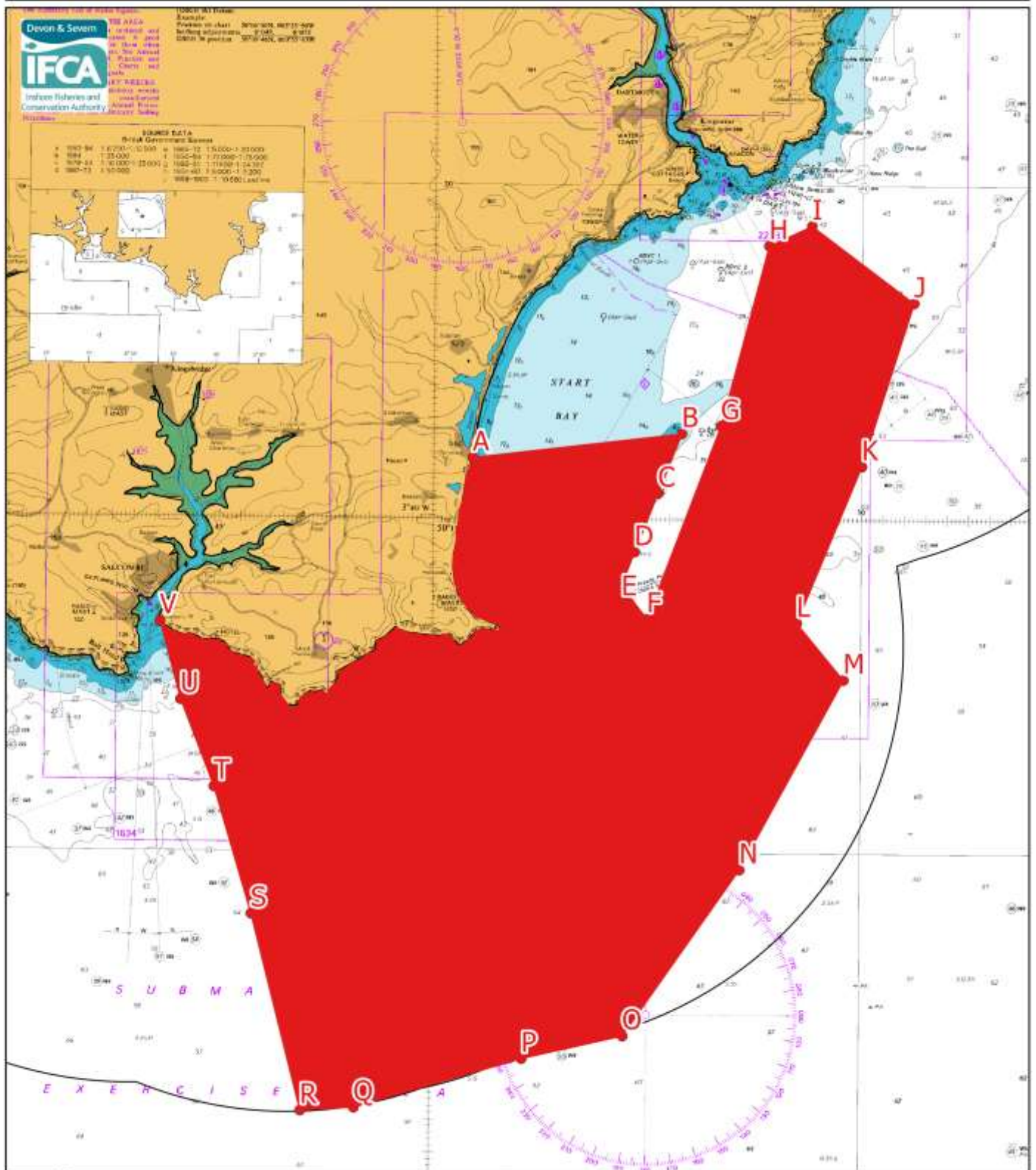
Annex 2 Lundy MCZ – No removal of Spiny Lobster

Latitude and Longitude positions

Point	Latitude	Longitude
A	51° 13.022' N	004° 42.114' W
B	51° 12.972' N	004° 38.047' W
C	51° 08.986' N	004° 38.123' W
D	51° 09.040' N	004° 42.172' W

Archive & Reference Only

Annex 2 Chart of Skerries Bank and Surrounds MCZ - No removal of Spiny Lobster



No removal of Spiny Lobster

The Skerries Bank and Surrounds MCZ extends beyond the 6 Nautical Mile Limit. This chart illustrates the area of the MCZ that is within the Devon and Severn IFCA District.

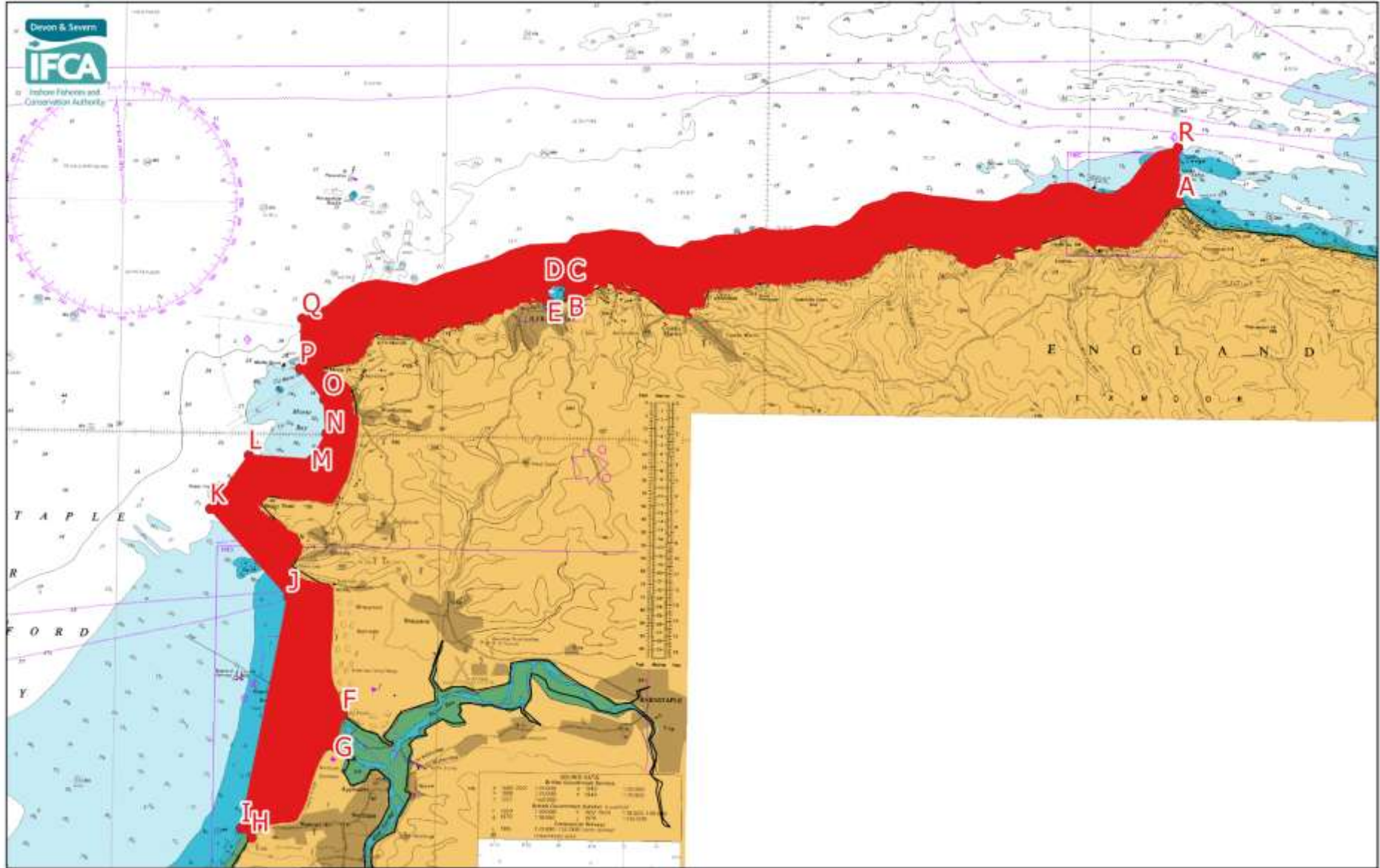
Annex 2 Skerries Bank and Surrounds MCZ – No removal of Spiny Lobster

Latitude and Longitude positions

Point	Latitude	Longitude
A	50° 15.900' N	003° 39.100' W
B	50° 16.278' N	003° 34.212' W
C	50° 15.384' N	003° 34.758' W
D	50° 14.502' N	003° 35.298' W
E	50° 13.998' N	003° 35.598' W
F	50° 13.500' N	003° 35.000' W
G	50° 16.400' N	003° 33.300' W
H	50° 19.100' N	003° 32.200' W
I	50° 19.400' N	003° 31.200' W
J	50° 18.250' N	003° 28.800' W
K	50° 15.800' N	003° 30.000' W
L	50° 13.450' N	003° 31.500' W
M	50° 12.600' N	003° 30.400' W
N	50° 09.750' N	003° 32.800' W
O	50° 07.250' N	003° 35.500' W
P	50° 06.900' N	003° 37.850' W
Q	50° 06.150' N	003° 41.750' W
R	50° 06.100' N	003° 43.000' W
S	50° 09.041' N	003° 44.183' W
T	50° 10.942' N	003° 45.079' W
U	50° 12.243' N	003° 45.876' W
V	50° 13.418' N	003° 46.374' W

The landward boundary between point A and V follows Mean High Water

Annex 2 Chart of Bideford to Foreland Point MCZ - No removal of Spiny Lobster



No removal of Spiny Lobster

Annex 2 Bideford to Foreland Point MCZ – No removal of Spiny Lobster

Latitude and Longitude positions

Point	Latitude	Longitude
A	51° 14.764' N	003° 47.203' W
B	51° 12.792' N	004° 06.128' W
C	51° 12.980' N	004° 06.125' W
D	51° 12.983' N	004° 06.777' W
E	51° 12.683' N	004° 06.777' W
F	51° 04.525' N	004° 12.923' W
G	51° 03.902' N	004° 13.150' W
H	51° 02.098' N	004° 15.684' W
I	51° 02.281' N	004° 15.999' W
J	51° 06.816' N	004° 14.666' W
K	51° 08.505' N	004° 17.134' W
L	51° 09.563' N	004° 15.965' W
M	51° 09.500' N	004° 14.013' W
N	51° 10.011' N	004° 13.569' W
O	51° 10.677' N	004° 13.653' W
P	51° 11.274' N	004° 14.425' W
Q	51° 12.250' N	004° 14.384' W
R	51° 15.825' N	003° 47.243' W

The landward boundary between points A and B, E and F, G and H, follows Mean High Water. Between point Q and point R the seaward boundary is 1 nautical mile seaward of Mean High Water.

Annex 3 Chart of River Axe closing line - No access to the use of pots with an opening of less than 85mm otherwise in accordance with paragraph 2.2 a & b of the Potting Permit Conditions

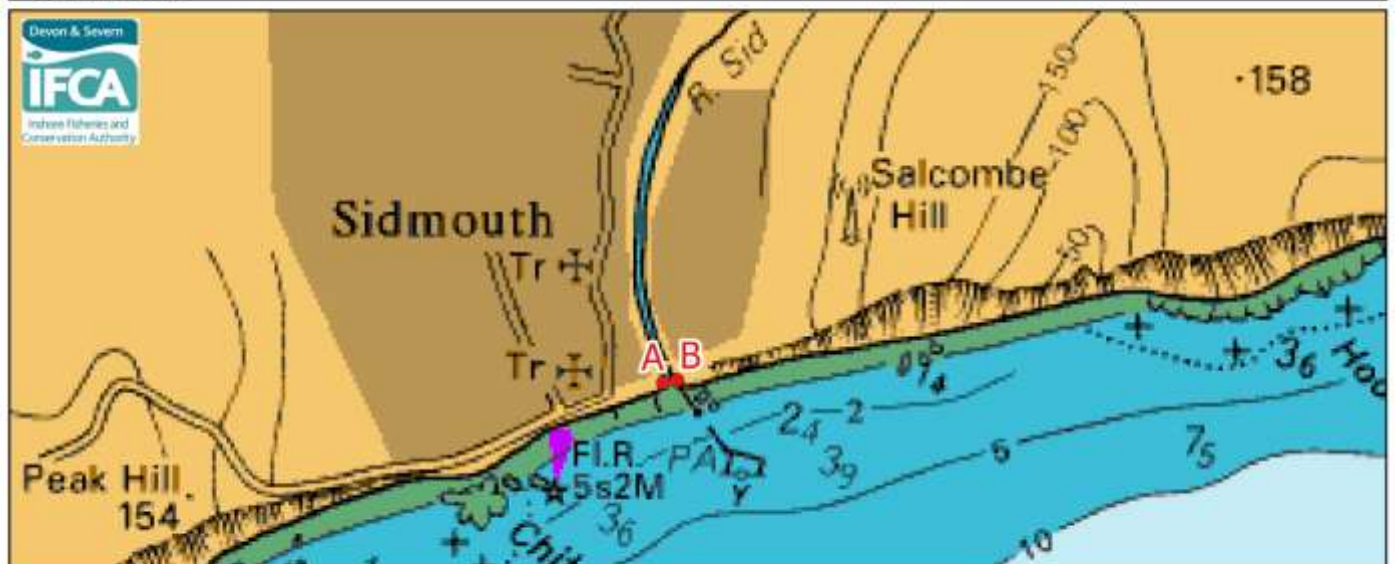


— Estuary closing line

River Axe closing line latitude and longitude positions:

Point	Latitude	Longitude
A	50° 42.135'N	003° 3.354'W
B	50° 42.135'N	003° 3.274'W

Annex 3 Chart of River Sid closing line - No access to the use of pots with an opening of less than 85mm otherwise in accordance with paragraph 2.2 a & b of the Potting Permit Conditions

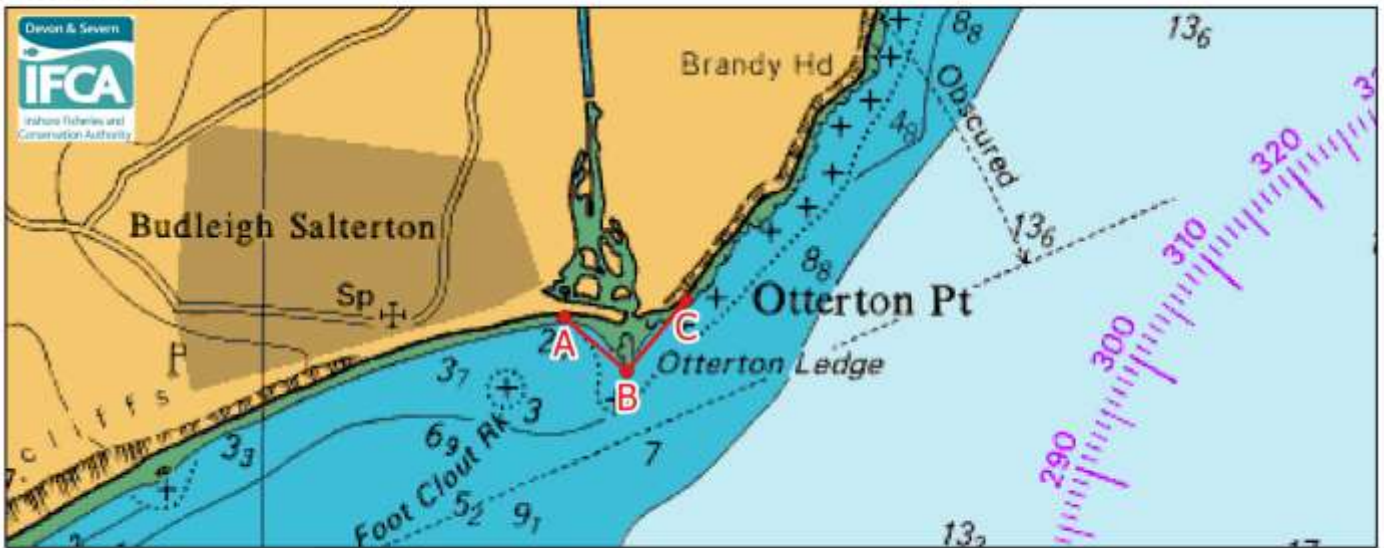


— Estuary closing line

River Sid closing line latitude and longitude positions:

Point	Latitude	Longitude
A	50° 40.726'N	003° 14.054'W
B	50° 40.735'N	003° 14.005'W

Annex 3 Chart of River Otter closing line - No access to the use of pots with an opening of less than 85mm otherwise in accordance with paragraph 2.2 a & b of the Potting Permit Conditions

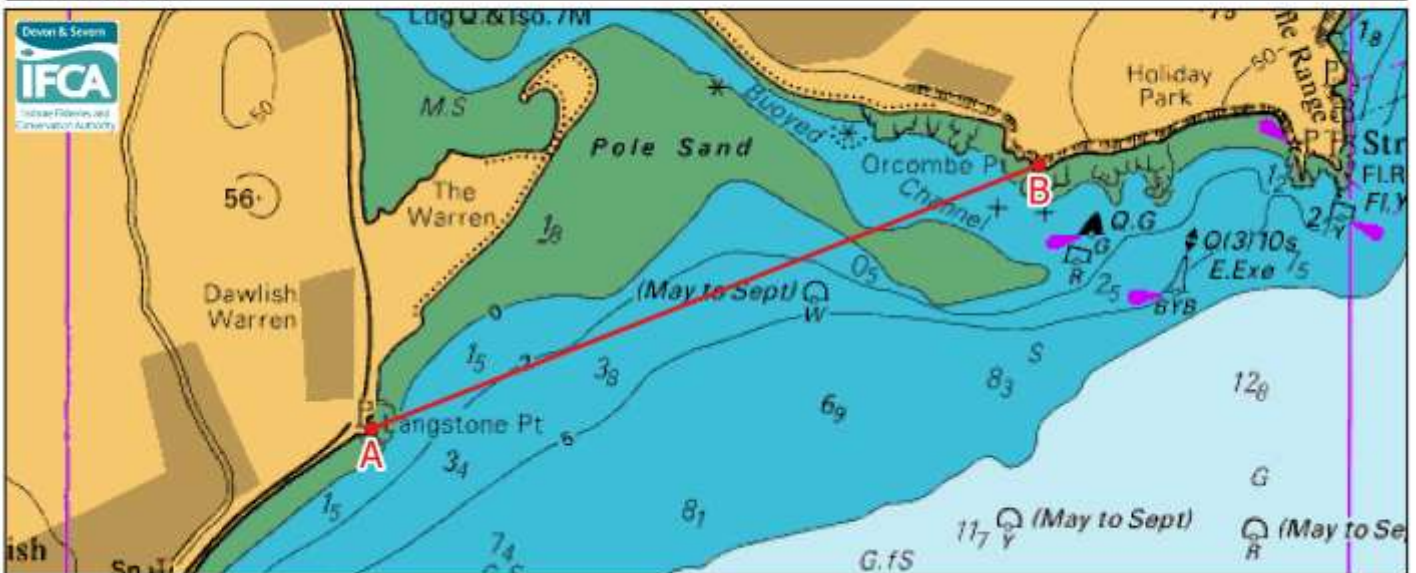


— Estuary closing line

River Otter closing line latitude and longitude positions:

Point	Latitude	Longitude
A	50° 37.791'N	003° 18.676'W
B (Otterton Ledge)	50° 37.626'N	003° 18.399'W
C (Otterton Point)	50° 37.821'N	003° 18.143'W

Annex 3 Chart of River Exe closing line - No access to the use of pots with an opening of less than 85mm otherwise in accordance with paragraph 2.2 a & b of the Potting Permit Conditions

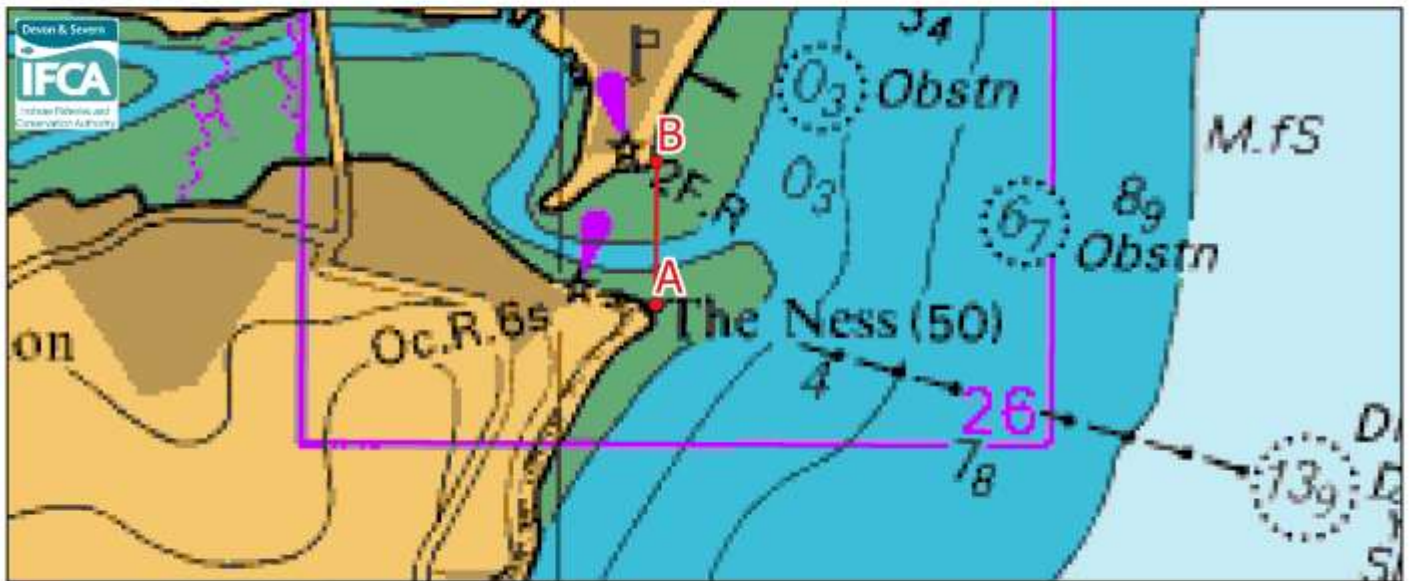


— Estuary Closing Line

River Exe closing line latitude and longitude positions:

Point	Latitude	Longitude
A (Langstone Pt)	50° 35.518'N	003° 26.629'W
B (Orcombe Pt)	50° 36.421'N	003° 23.108'W

Annex 3 Chart of River Teign closing line - No access to the use of pots with an opening of less than 85mm otherwise in accordance with paragraph 2.2 a & b of the Potting Permit Conditions



— Estuary Closing Line

River Teign closing line latitude and longitude positions:

Point	Latitude	Longitude
A (The Ness)	50° 32.272'N	003° 29.743'W
B (Harbour Light)	50° 32.513'N	003° 29.743'W

Annex 3 Chart of River Dart closing line - No access to the use of pots with an opening of less than 85mm otherwise in accordance with paragraph 2.2 a & b of the Potting Permit Conditions

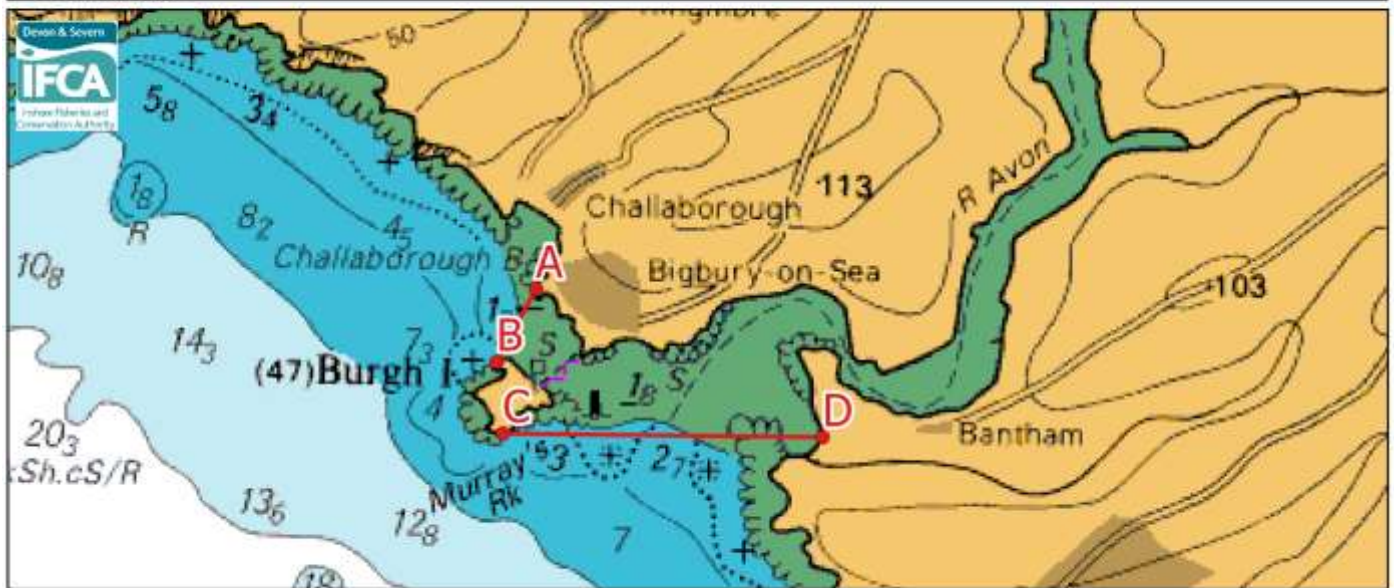


— Estuary Closing Line

River Dart closing line latitude and longitude positions:

Point	Latitude	Longitude
A (Combe Point)	50° 19.634'N	003° 34.266'W
B (Inner Froward Point)	50° 20.141'N	003° 32.583'W

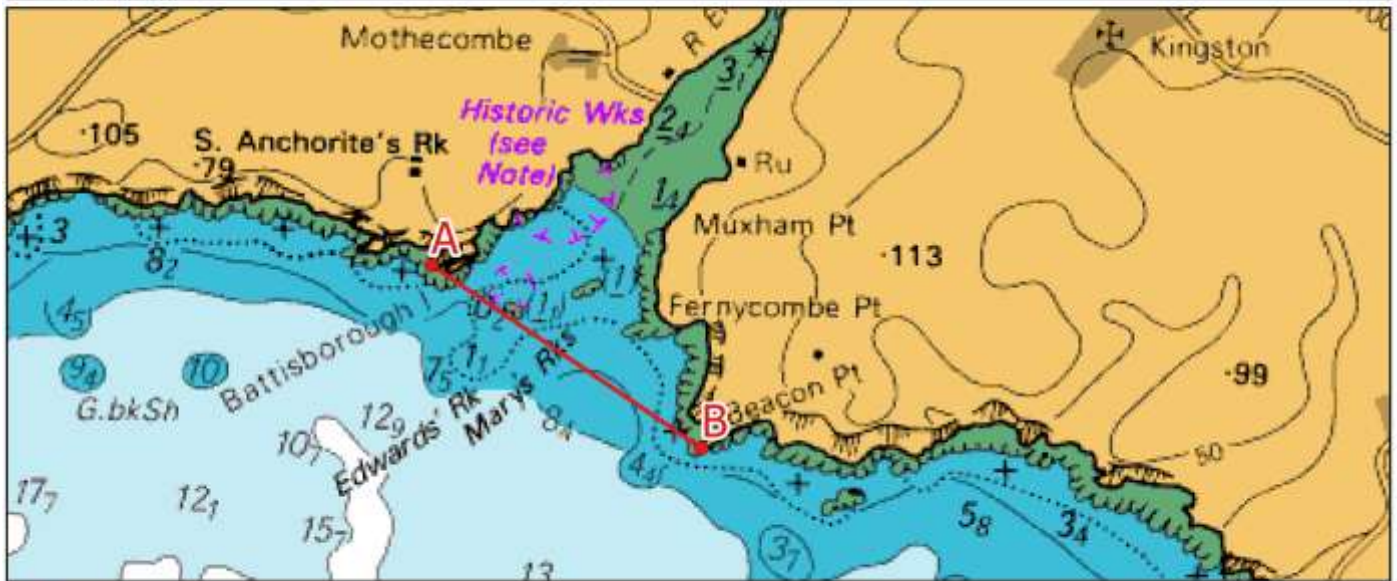
Annex 3 Chart of River Avon closing line - No access to the use of pots with an opening of less than 85mm otherwise in accordance with paragraph 2.2 a & b of the Potting Permit Conditions



River Avon closing line latitude and longitude positions:

Point	Latitude	Longitude
A (Warren Point)	50° 17.077'N	003° 53.884'W
B (Herringcove Pt)	50° 16.876'N	003° 54.049'W
C (Burgh Point)	50° 16.684'N	003° 54.018'W
D (Bantham Sand)	50° 16.684'N	003° 52.676'W

Annex 3 Chart of River Erme closing line - No access to the use of pots with an opening of less than 85mm otherwise in accordance with paragraph 2.2 a & b of the Potting Permit Conditions



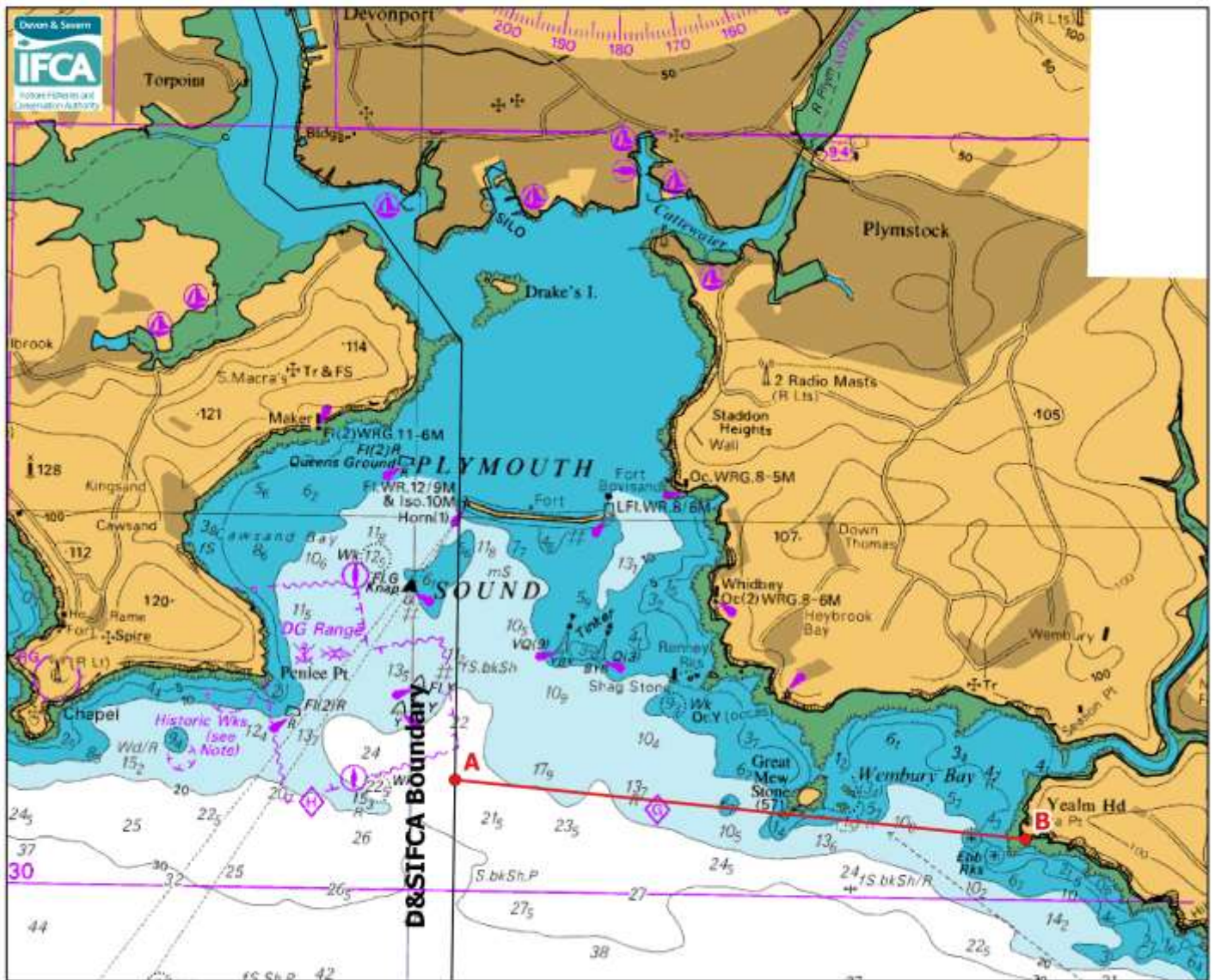
— Estuary Closing Line

River Erme closing line latitude and longitude positions:

Point	Latitude	Longitude
A (Battisborough Island)	50° 18.243'N	003° 57.834'W
B (Beacon Point)	50° 17.750'N	003° 56.657'W

Archive & Research

Annex 3 Chart of Plymouth Sound closing line - No access to the use of pots with an opening of less than 85mm otherwise in accordance with paragraph 2.2 a & b of the Potting Permit Conditions

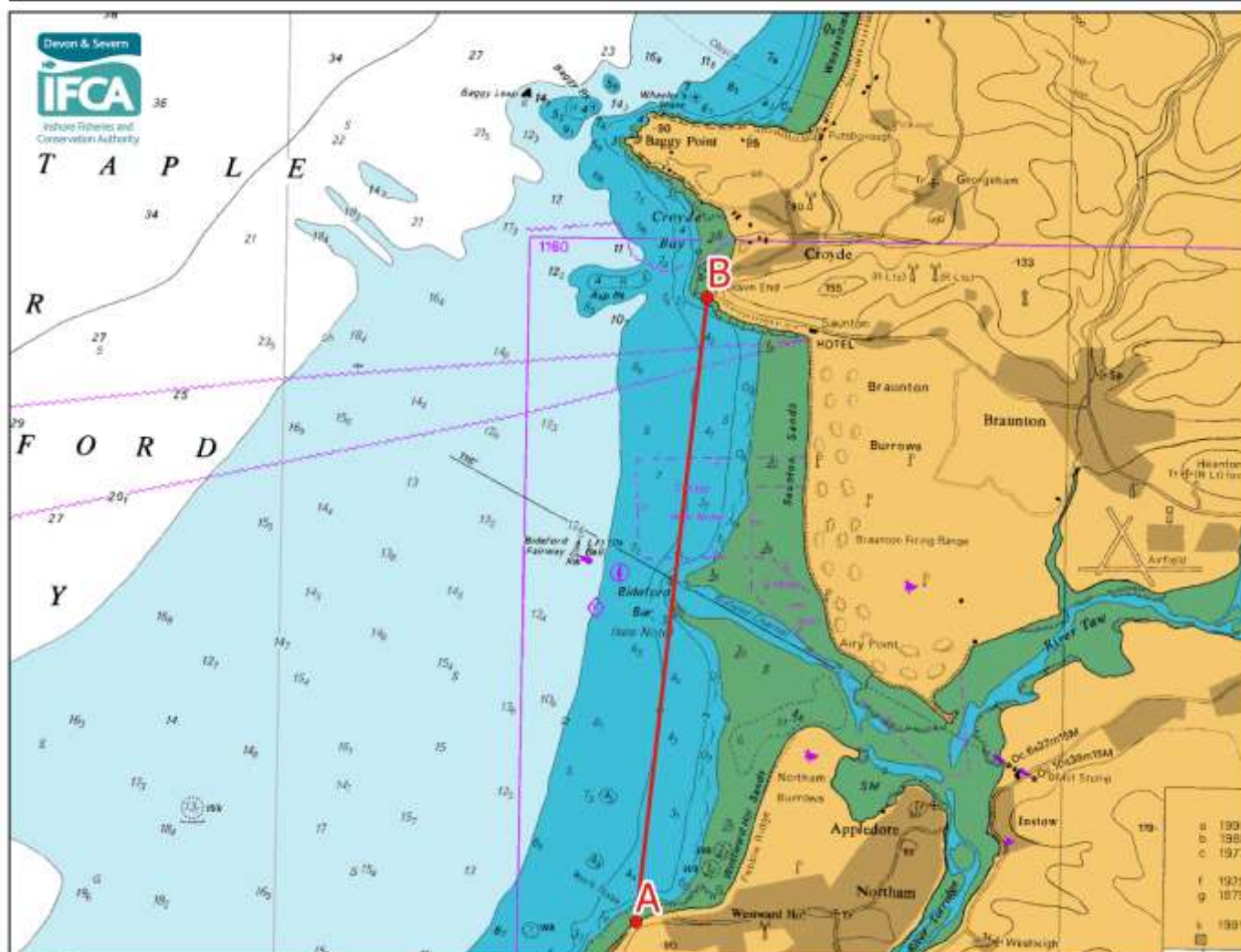


— Estuary Closing Line

Plymouth Sound closing line latitude and longitude positions:

Point	Latitude	Longitude
A (D&S IFCA Boundary)	50° 18.484'N	004° 09.600'W
B (Yealm Head)	50° 18.192'N	004° 04.458'W

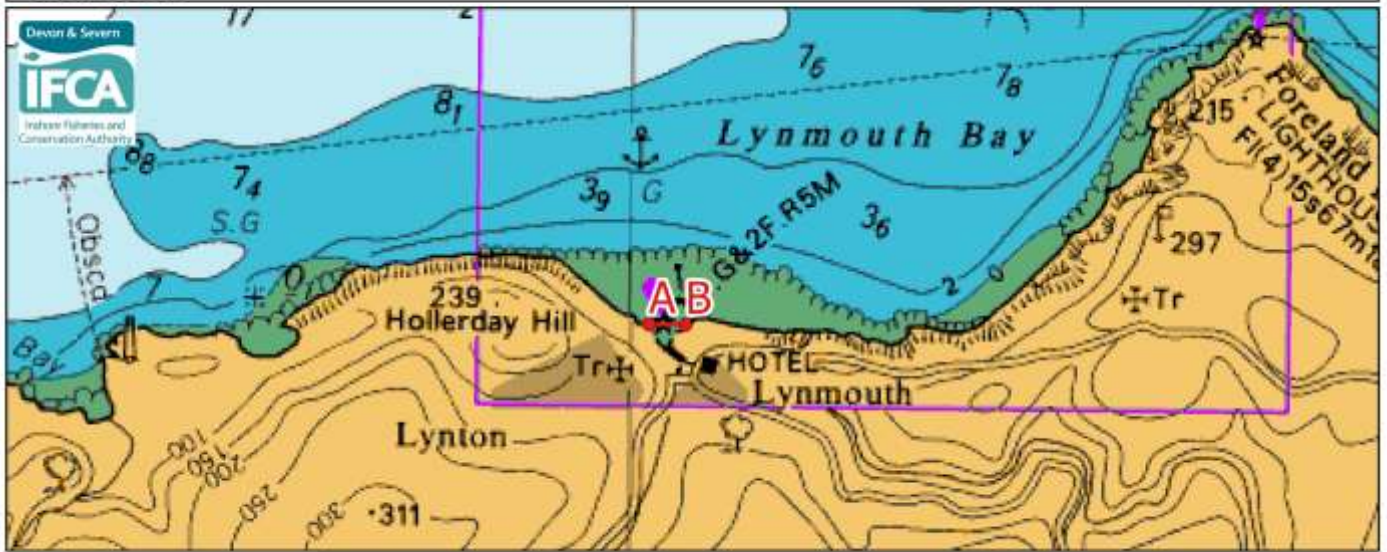
Annex 3 Chart of River Taw and River Torridge closing line - No access to the use of pots with an opening of less than 85mm otherwise in accordance with paragraph 2.2 a & b of the Potting Permit Conditions



River Taw and River Torridge closing line latitude and longitude positions:

Point	Latitude	Longitude
A (Rock Nose)	51° 02.298'N	004° 15.396'W
B (Down End)	51° 07.331'N	004° 14.619'W

Annex 3 Chart of River Lyn closing line - No access to the use of pots with an opening of less than 85mm otherwise in accordance with paragraph 2.2 a & b of the Potting Permit Conditions



— Estuary closing line

River Lyn closing line latitude and longitude positions:

Point	Latitude	Longitude
A (Landward end of the Pier)	51° 13.900'N	003° 49.918'W
B	51° 13.900'N	003° 49.758'W

Annex 3 Chart of River Parrett closing line - No access to the use of pots with an opening of less than 85mm otherwise in accordance with paragraph 2.2 a & b of the Potting Permit Conditions

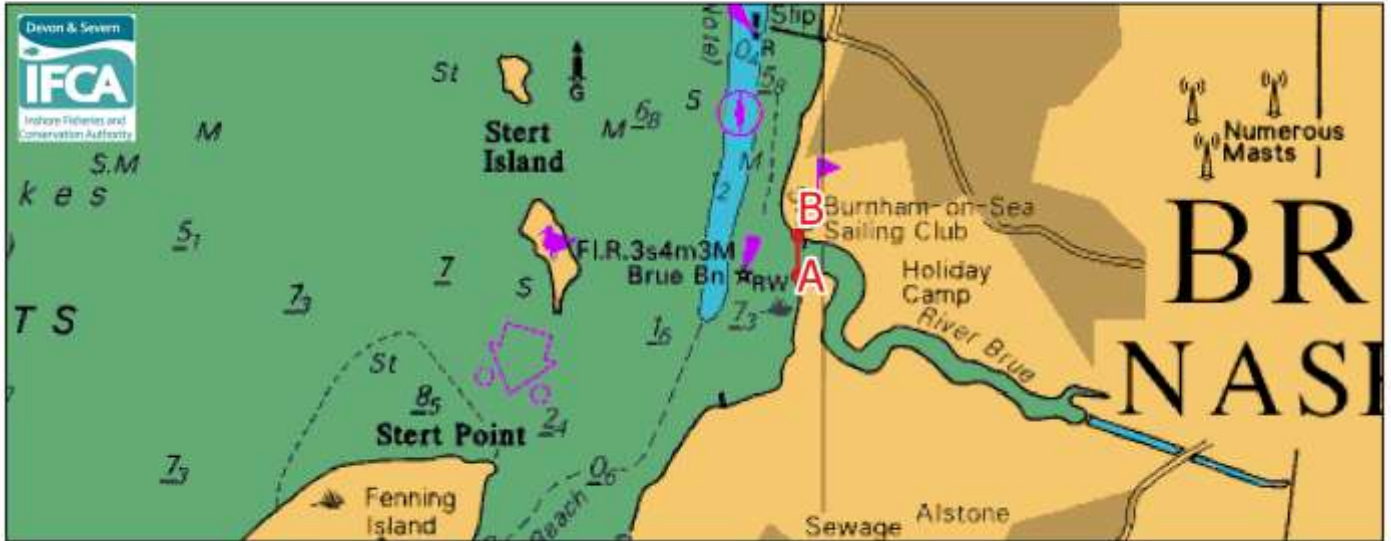


— Estuary closing line

River Parrett closing line latitude and longitude positions:

Point	Latitude	Longitude
A (Stert Point)	51° 13.106'N	003° 01.177'W
B (Beacon)	51° 13.061'N	003° 00.642'W

Annex 3 Chart of River Brue closing line - No access to the use of pots with an opening of less than 85mm otherwise in accordance with paragraph 2.2 a & b of the Potting Permit Conditions

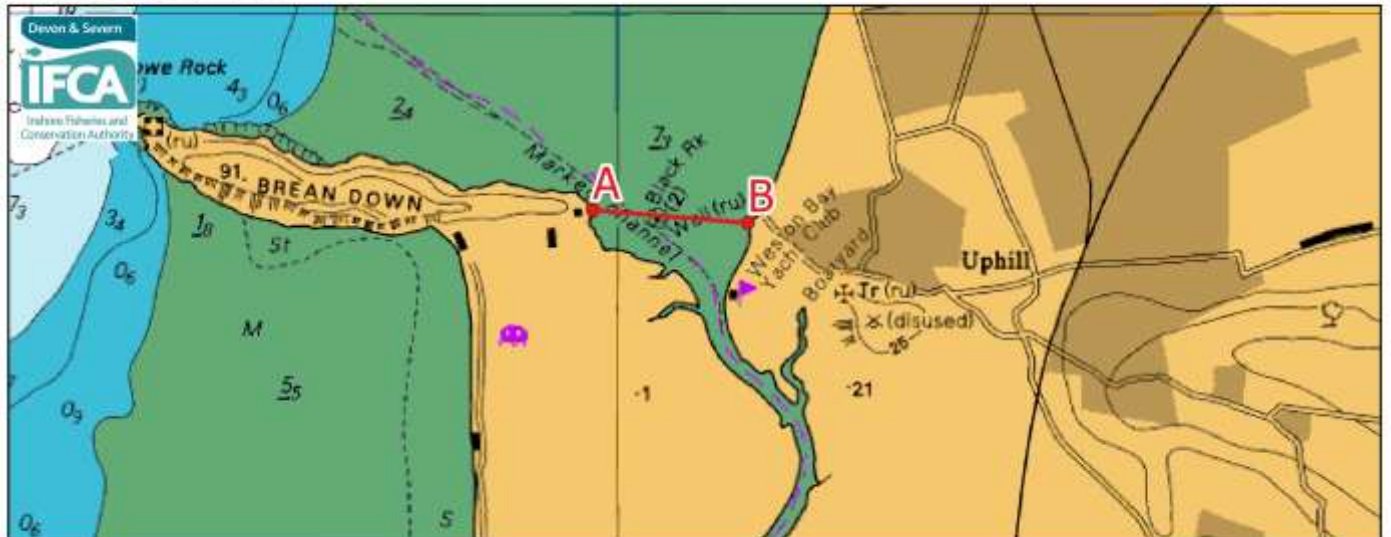


— Estuary closing line

River Brue closing line latitude and longitude positions:

Point	Latitude	Longitude
A	51° 13.528'N	003° 00.091'W
B (West of slipway)	51° 13.618'N	003° 00.091'W

Annex 3 Chart of River Axe (Somerset) closing line - No access to the use of pots with an opening of less than 85mm otherwise in accordance with paragraph 2.2 a & b of the Potting Permit Conditions

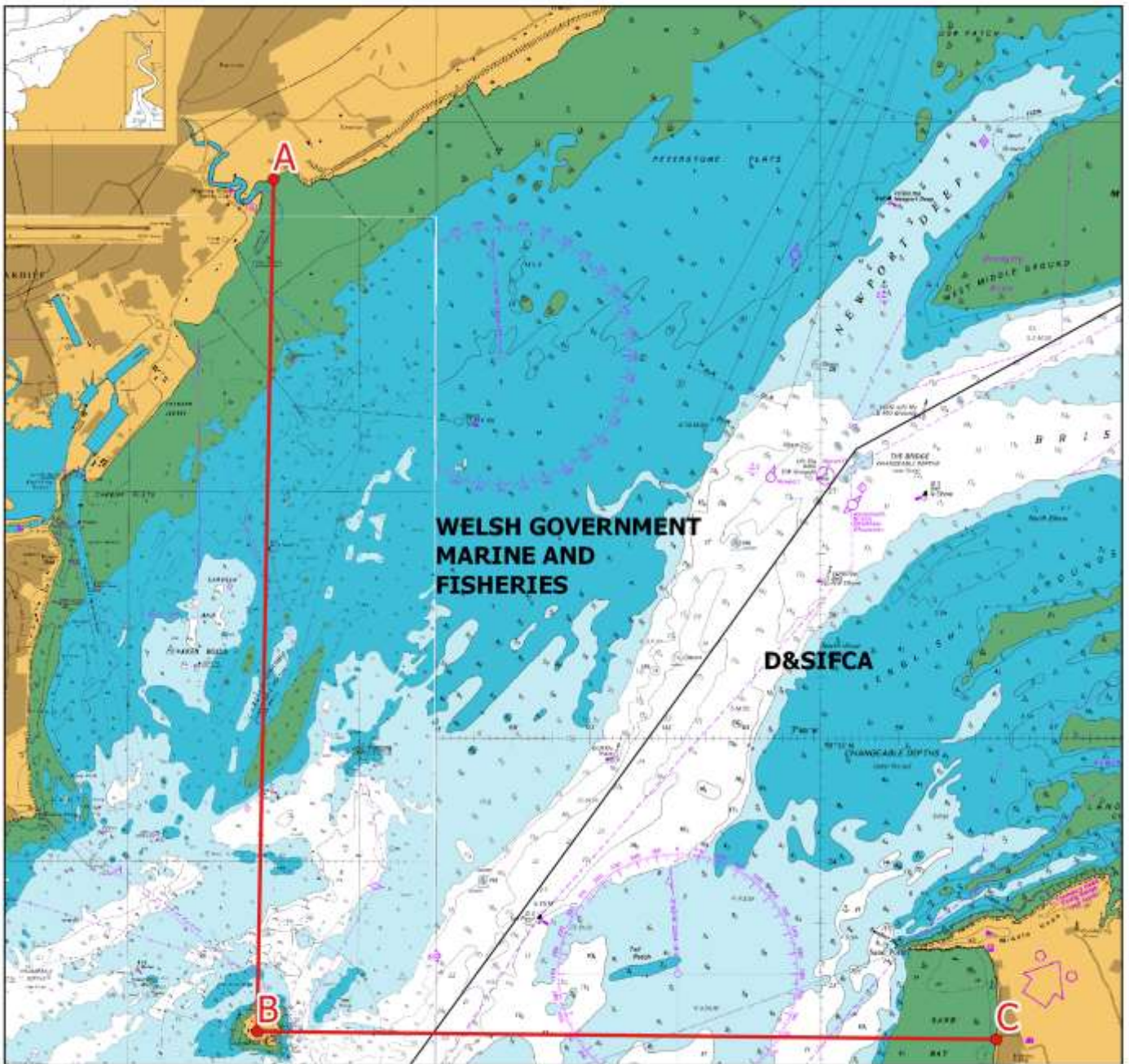


— Estuary closing line

River Axe (Somerset) closing line latitude and longitude positions:

Point	Latitude	Longitude
A	51° 19.450'N	003° 00.108'W
B	51° 19.417'N	002° 59.418'W

Annex 3 Chart of Severn Estuary closing line - No access to the use of pots with an opening of less than 85mm otherwise in accordance with paragraph 2.2 a & b of the Potting Permit Conditions



— Estuary closing line

Severn Estuary closing line latitude and longitude positions:

Point	Latitude	Longitude
A (East of Rhymney River mouth)	51° 29.533'N	003° 07.118'W
B (Flat Holm Lighthouse)	51° 22.617'N	003° 07.317'W
C (South of Beach Rd/ Sand Rd junction)	51° 22.552'N	002° 57.724'W

Annex 4 Lundy No Take Zone – No removal of any sea fisheries resources

Latitude and Longitude positions

Point	Latitude	Longitude
A	51°12.040'N	004°40.120'W
B	51°12.040'N	004°39.000'W
C	51°10.070'N	004°39.000'W
D	51°10.070'N	004°39.600'W

Archive & Reference Only