



**Devon and Severn IFCA
Potting Permit Byelaw
Permit Condition Annexes**

7th November 2025

Contents

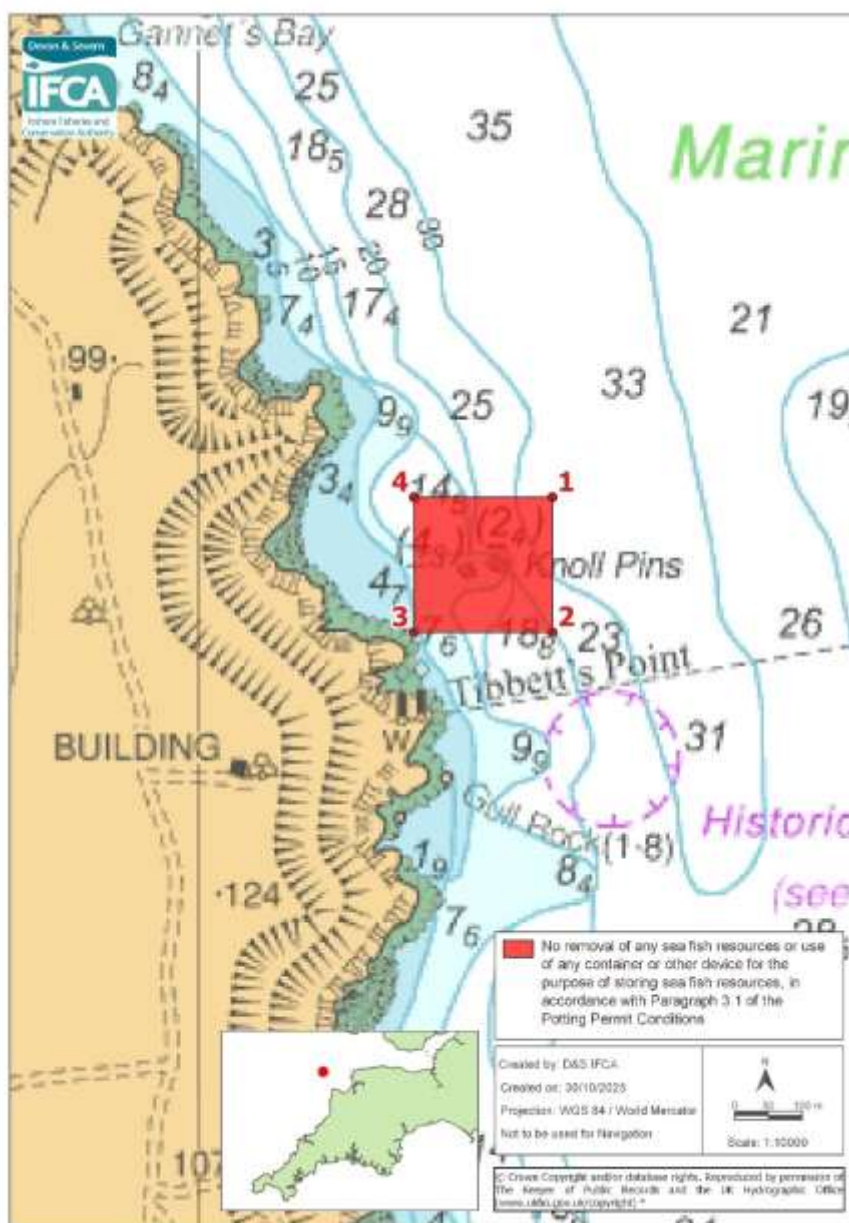
Annex 1 - No Removal of any Sea Fish Resources or Use of Store Pots	3
Knoll Pins, Lundy Island	3
Annex 2 – No Removal of Spiny Lobster	5
Bideford to Foreland Point MCZ	5
Lundy MCZ	7
Skerries Bank and Surrounds MCZ	8
Annex 3 - Estuary Closing Lines	10
Upper Reaches Severn Estuary	10
River Axe (Somerset)	11
River Brue Closing Line	12
River Parrett Closing Line	13
River Lyn Closing Line	14
Rivers Taw and Torridge Closing Line	15
Plymouth Sound Closing Line	16
River Erme Closing Line	17
River Avon Closing Lines	18
Salcombe Estuary Closing Line	19
River Dart Closing Line	20
River Teign Closing Line	21
River Exe Closing Line	22
River Otter Closing Line	23
River Sid Closing Line	24
River Axe (Devon) Closing Line	25
Annex 4 - No Removal of Sea Fisheries Resources	26
Lundy No Take Zone	26

[*www.ukho.gov.uk/copyright](http://www.ukho.gov.uk/copyright)

All Positions are expressed in degrees, decimal minutes (DDM) and shall be measured according to the WGS84 Geographic Co-ordinate System

Annex 1 - No Removal of any Sea Fish Resources or Use of Store Pots

Knoll Pins, Lundy Island



Explanation of the Access Restrictions:

No sea fisheries resources can be removed from the Knoll Pins area at Lundy Island (Annex 1).

No container or any other device for the purpose of storing sea fisheries resources can be used in the Knoll Pins area at Lundy Island (Annex 1).

*www.ukho.gov.uk/copyright

All Positions are expressed in degrees, decimal minutes (DDM) and shall be measured according to the WGS84 Geographic Co-ordinate System

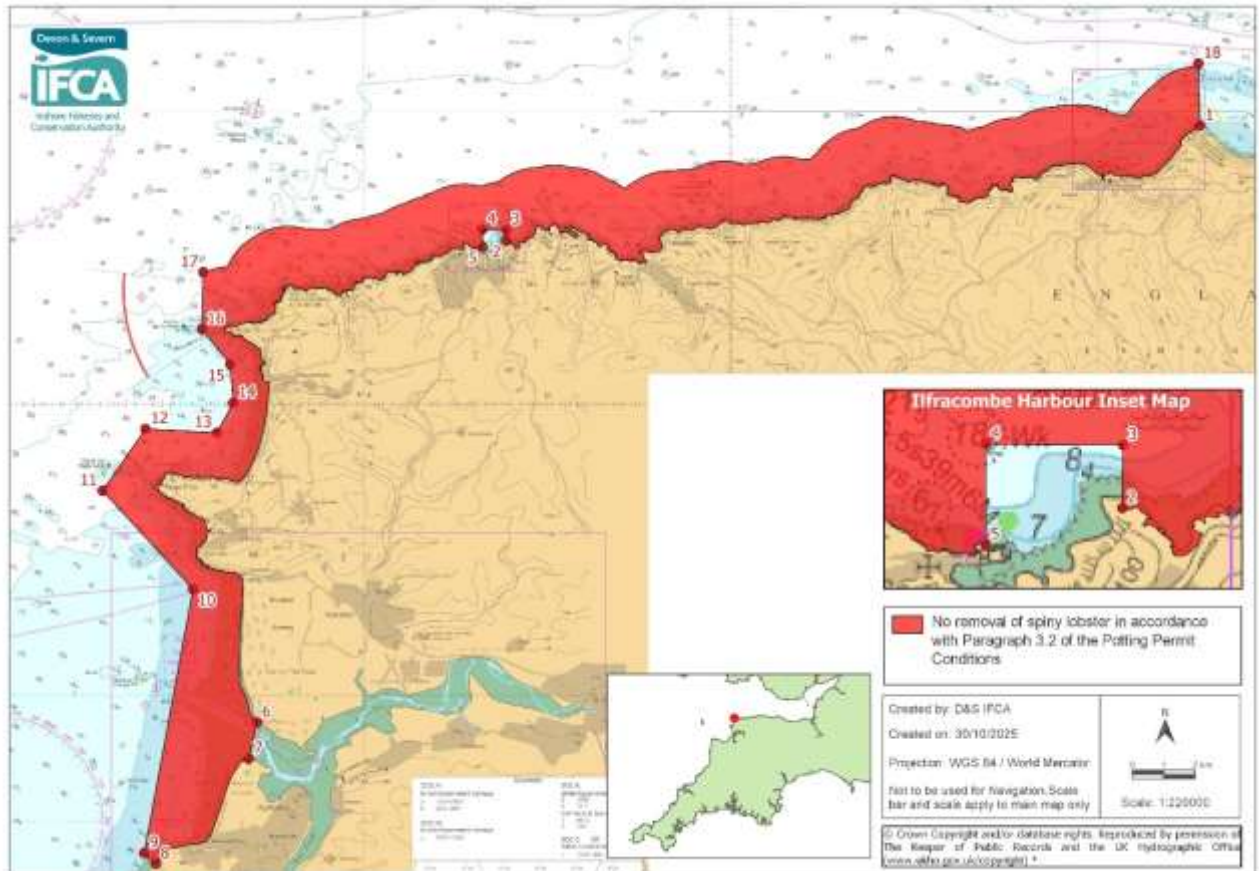
No removal of any sea fish resources or use any container or any other device for the purpose of storing sea fish resources, in accordance with Paragraph 3.1 of the Potting Permit Byelaw Permit Conditions, within the D&S IFCA's District outlined by the following points plotted sequentially and joined using straight lines from Point 1 to Point 4, then returning to Point 1.

Point Number	Latitude	Longitude
1	51°11.346 N	004°39.550 W
2	51°11.238 N	004°39.550 W
3	51°11.238 N	004°39.726 W
4	51°11.346 N	004°39.726 W

[*www.ukho.gov.uk/copyright](http://www.ukho.gov.uk/copyright)

All Positions are expressed in degrees, decimal minutes (DDM) and shall be measured according to the WGS84 Geographic Co-ordinate System

Annex 2 – No Removal of Spiny Lobster Bideford to Foreland Point MCZ



Explanation of Restriction

No spiny lobster can be removed from the MCZs in Annex 2, as spiny lobster is a designated feature of the sites.

*www.ukho.gov.uk/copyright

All Positions are expressed in degrees, decimal minutes (DDM) and shall be measured according to the WGS84 Geographic Co-ordinate System

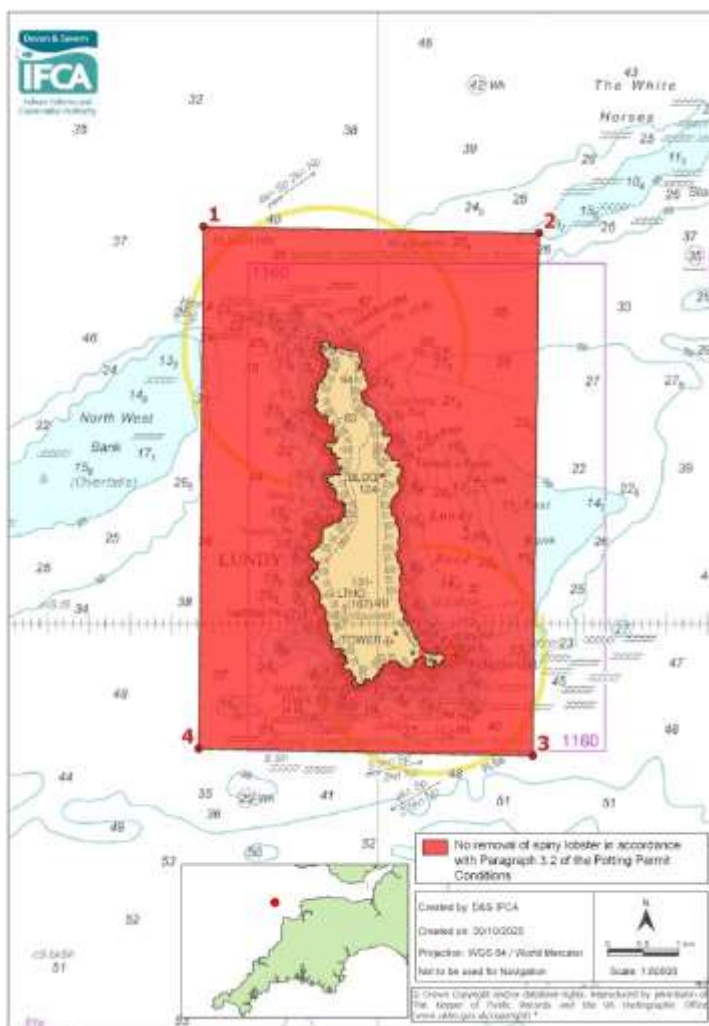
No removal of Spiny Lobster in accordance with Paragraph 3.2 of the Potting Permit Byelaw Permit Conditions, within the D&S IFCA's District outlined by the following points plotted sequentially and joined using straight lines (unless otherwise indicated) from Point 1 to Point 18, then returning to Point 1. The landward boundary follows Mean High Water.

Point Number	Latitude	Longitude
1	51° 14.764 N	003° 47.204 W
Landward boundary follows Mean High Water to Point 2		
2	51° 12.792 N	004° 06.130 W
3	51° 12.980 N	004° 06.126 W
4	51° 12.983 N	004° 06.778 W
5	51° 12.683 N	004° 06.778 W
Landward boundary follows Mean High Water to Point 6		
6	51° 04.524 N	004° 12.897 W
7	51° 03.849 N	004° 13.416 W
Landward boundary follows Mean High Water to Point 8		
8	51° 02.098 N	004° 15.685 W
9	51° 02.281 N	004° 16.001 W
10	51° 06.816 N	004° 14.667 W
11	51° 08.505 N	004° 17.135 W
12	51° 09.563 N	004° 15.967 W
13	51° 09.499 N	004° 14.015 W
14	51° 10.011 N	004° 13.570 W
15	51° 10.676 N	004° 13.655 W
16	51° 11.274 N	004° 14.426 W
17	51° 12.250 N	004° 14.385 W
Seaward boundary follows a one nautical mile line from Mean High Water to Point 18		
18	51° 15.825 N	003° 47.244 W

[*www.ukho.gov.uk/copyright](http://www.ukho.gov.uk/copyright)

All Positions are expressed in degrees, decimal minutes (DDM) and shall be measured according to the WGS84 Geographic Co-ordinate System

Lundy MCZ



Explanation of the Access Restriction

No spiny lobster can be removed from the MCZs in Annex 2, as spiny lobster is a designated feature of the sites.

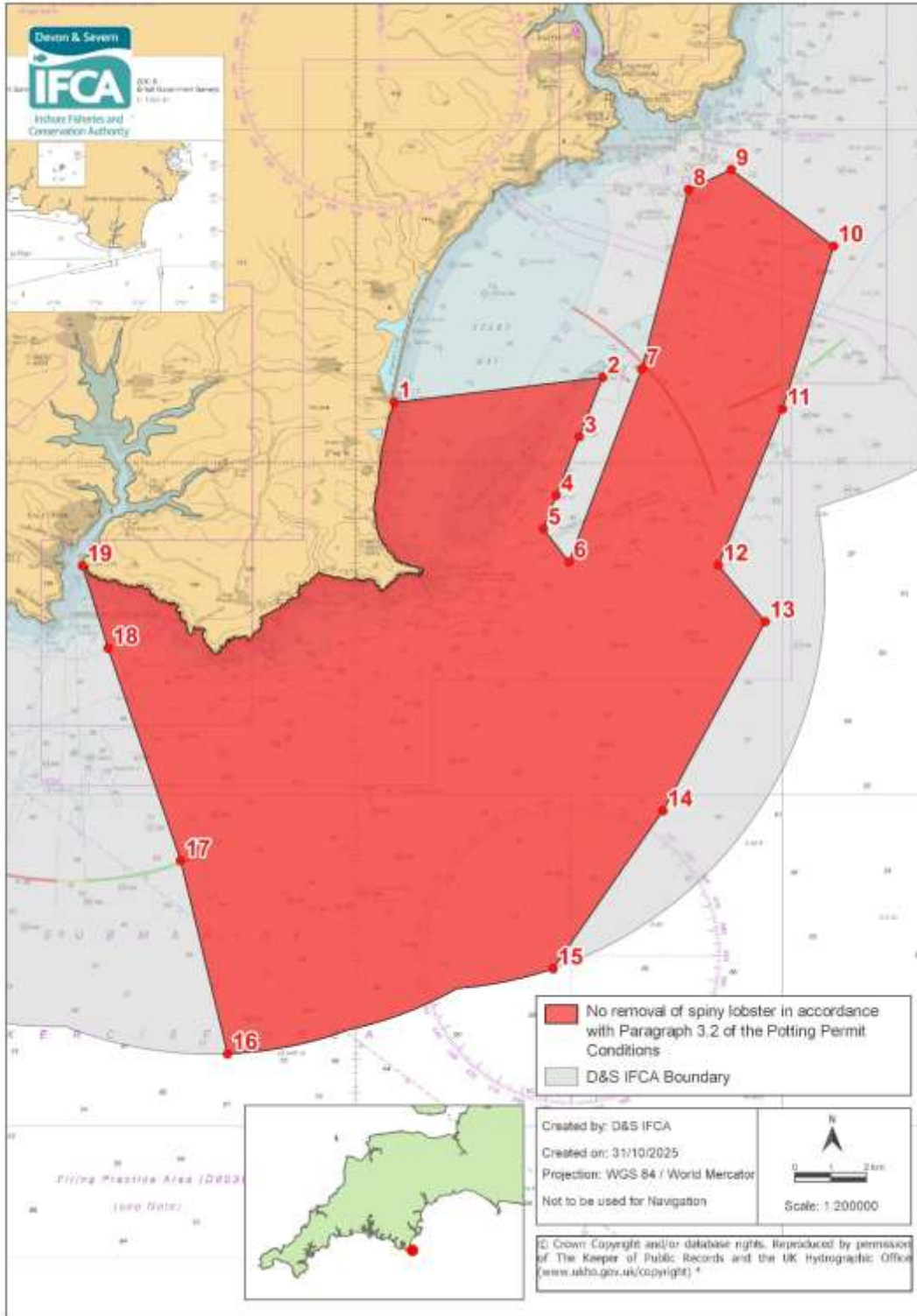
No removal of Spiny Lobster, in accordance with Paragraph 3.2 of the Potting Permit Byelaw Permit Conditions, within the D&S IFCA's District outlined by the following points plotted sequentially from Point 1 to Point 4 and joined using straight lines, then returning to Point 1.

Point Number	Latitude	Longitude
1	51° 13.022 N	004° 42.113 W
2	51° 12.972 N	004° 38.049 W
3	51° 08.986 N	004° 38.123 W
4	51° 09.040 N	004° 42.172 W

*www.ukho.gov.uk/copyright

All Positions are expressed in degrees, decimal minutes (DDM) and shall be measured according to the WGS84 Geographic Co-ordinate System

Skerries Bank and Surrounds MCZ



Explanation of the Access Restriction

No spiny lobster can be removed from the MCZs in Annex 2, as spiny lobster is a designated feature of the sites.

*www.ukho.gov.uk/copyright

All Positions are expressed in degrees, decimal minutes (DDM) and shall be measured according to the WGS84 Geographic Co-ordinate System

No removal of Spiny Lobster, in accordance with Paragraph 3.2 of the Potting Permit Byelaw Permit Conditions, within the D&S IFCA's District outlined by the following points plotted sequentially from Point 1 to Point 19 and joined using straight lines (unless otherwise indicated) then returning to Point 1. The landward boundary follows Mean High Water.

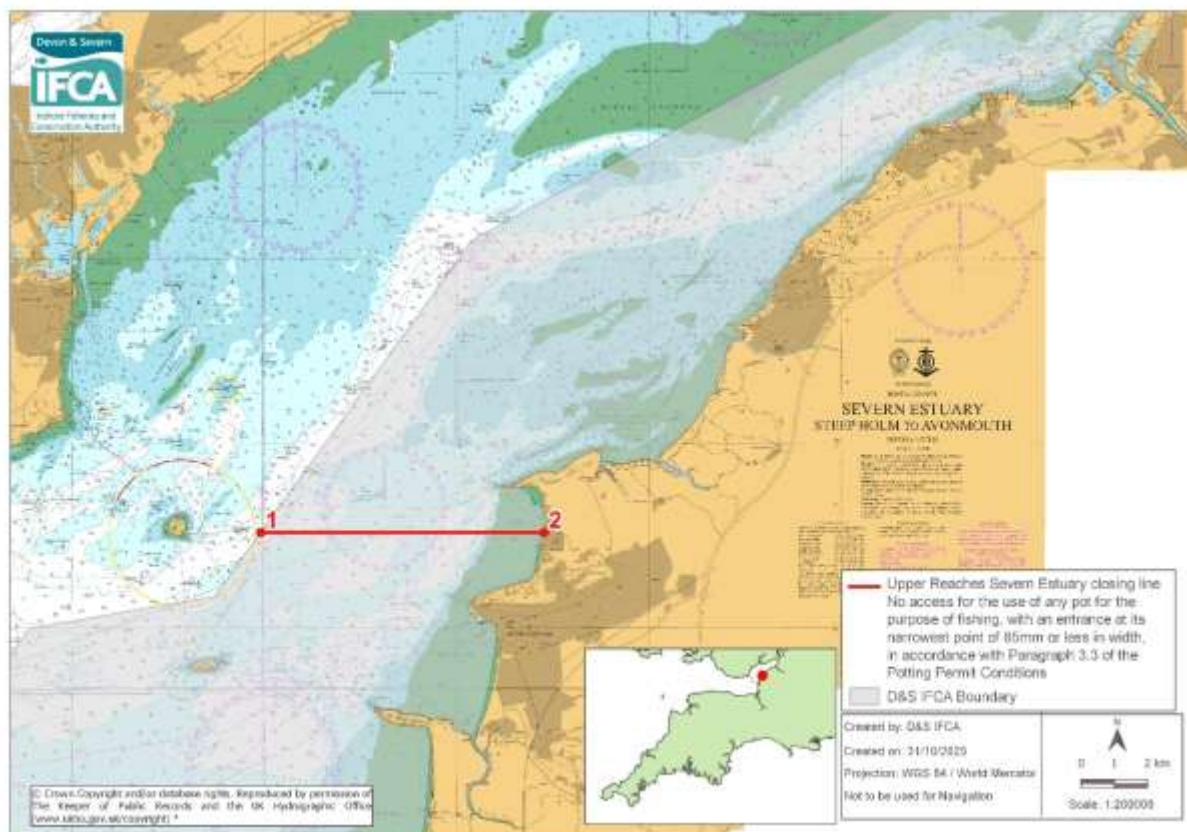
Point Number	Latitude	Longitude
1	50° 15.897 N	003° 39.141 W
2	50° 16.278 N	003° 34.212 W
3	50° 15.384 N	003° 34.758 W
4	50° 14.502 N	003° 35.298 W
5	50° 13.998 N	003° 35.598 W
6	50° 13.500 N	003° 35.000 W
7	50° 16.400 N	003° 33.300 W
8	50° 19.100 N	003° 32.200 W
9	50° 19.400 N	003° 31.200 W
10	50° 18.250 N	003° 28.800 W
11	50° 15.800 N	003° 30.000 W
12	50° 13.450 N	003° 31.500 W
13	50° 12.600 N	003° 30.400 W
14	50° 09.750 N	003° 32.800 W
15	50° 07.368 N	003° 35.373 W
Then follow the six nautical mile limit to Point 16		
16	50° 06.084 N	003° 43.000 W
17	50° 09.000 N	003° 44.100 W
18	50° 12.200 N	003° 45.800 W
19	50° 13.444 N	003° 46.402 W
The landward boundary follows mean high water to Point 1		

[*www.ukho.gov.uk/copyright](http://www.ukho.gov.uk/copyright)

All Positions are expressed in degrees, decimal minutes (DDM) and shall be measured according to the WGS84 Geographic Co-ordinate System

Annex 3 - Estuary Closing Lines

Upper Reaches Severn Estuary Closing Line



Explanation of the Access Restrictions

Within the estuaries set out in Annex 3, the use of pots is restricted.

Pots with an entrance of less than 85mm cannot be used within the estuary areas unless the narrowest point of the entrance to the pot is fitted with a ring constructed of a rigid material. The ring width must be the same as the narrowest width of the entrance to the pot.

These Potting Permit Conditions, that include the use of rigid rings, were introduced to protect otters.

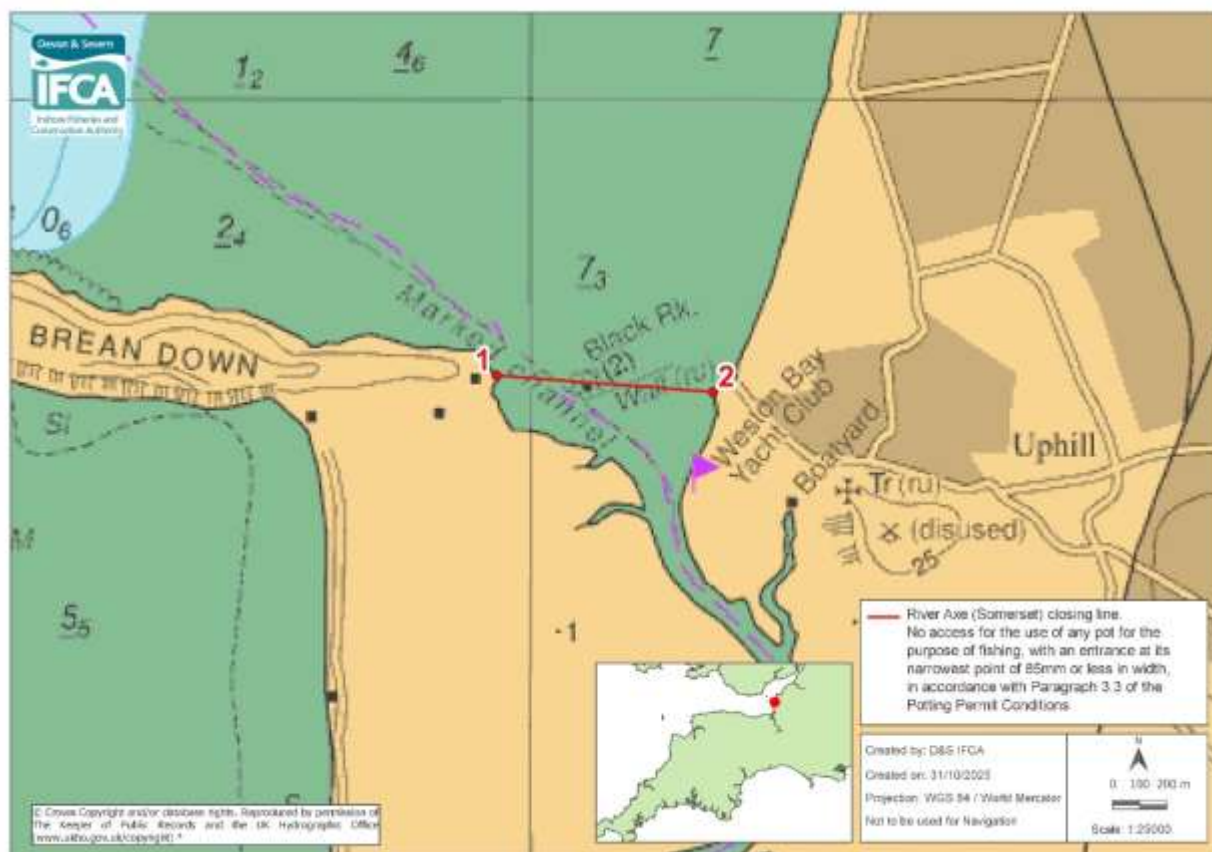
No access for the use of any pot for the purpose of fishing with an entrance at its narrowest point of 85mm or less in width, in accordance with Paragraph 3.3 of the Potting Permit Byelaw Permit Conditions, (except where Paragraphs 2.2 (a) and 2.2 (b) apply), within the D&S IFCA's District inside of a straight line drawn from Point 1 (the median line with Welsh Government waters) to Point 2.

Point Number	Latitude	Longitude
1	51° 22.553 N	003° 05.090 W
2	51° 22.553 N	002° 57.724 W

*www.ukho.gov.uk/copyright

All Positions are expressed in degrees, decimal minutes (DDM) and shall be measured according to the WGS84 Geographic Co-ordinate System

River Axe (Somerset) Closing Line



Explanation of the Access Restrictions

Within the estuaries set out in Annex 3, the use of pots is restricted.

Pots with an entrance of less than 85mm cannot be used within the estuary areas unless the narrowest point of the entrance to the pot is fitted with a ring constructed of a rigid material. The ring width must be the same as the narrowest width of the entrance to the pot.

These Potting Permit Conditions, that include the use of rigid rings, were introduced to protect otters.

No access for the use of any pot for the purpose of fishing with an entrance at its narrowest point of 85mm or less in width, in accordance with Paragraph 3.3 of the Potting Permit Byelaw Permit Conditions, (except where Paragraphs 2.2 (a) and 2.2 (b) apply), within the D&S IFCA's District inside of a straight line drawn from Point 1 to Point 2.

Point Number	Latitude	Longitude
1	51° 19.450 N	003° 00.108 W
2	51° 19.417 N	002° 59.418 W

*www.ukho.gov.uk/copyright

All Positions are expressed in degrees, decimal minutes (DDM) and shall be measured according to the WGS84 Geographic Co-ordinate System

River Brue Closing Line



Explanation of the Access Restrictions

Within the estuaries set out in Annex 3, the use of pots is restricted.

Pots with an entrance of less than 85mm cannot be used within the estuary areas unless the narrowest point of the entrance to the pot is fitted with a ring constructed of a rigid material. The ring width must be the same as the narrowest width of the entrance to the pot.

These Potting Permit Conditions, that include the use of rigid rings, were introduced to protect otters.

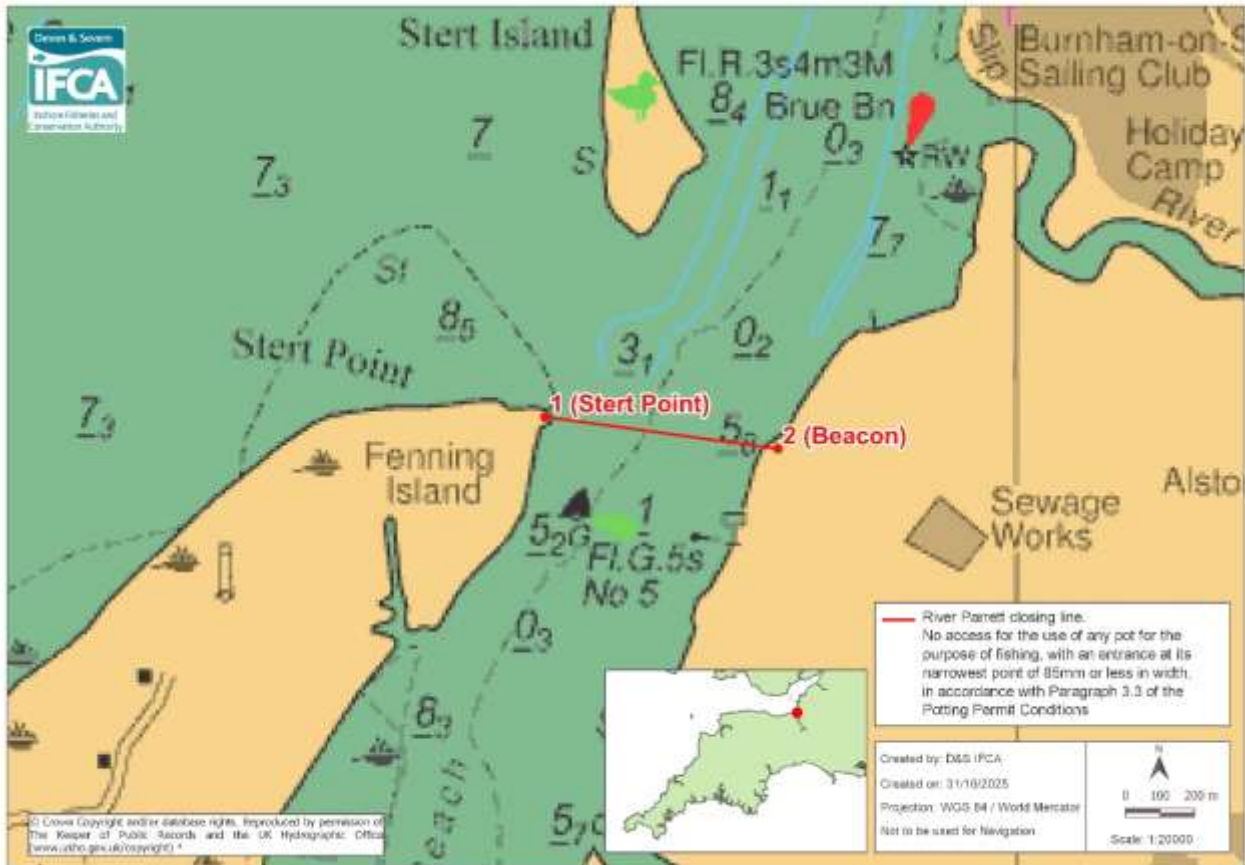
No access for the use of any pot for the purpose of fishing with an entrance at its narrowest point of 85mm or less in width, in accordance with Paragraph 3.3 of the Potting Permit Byelaw Permit Conditions, (except where Paragraphs 2.2 (a) and 2.2 (b) apply), within the D&S IFCA's District inside of a straight line drawn from Point 1 to Point 2.

Point Number	Latitude	Longitude
1	51° 13.528 N	003° 00.091 W
2 (West of slipway)	51° 13.618 N	003° 00.091 W

*www.ukho.gov.uk/copyright

All Positions are expressed in degrees, decimal minutes (DDM) and shall be measured according to the WGS84 Geographic Co-ordinate System

River Parrett Closing Line



Explanation of the Access Restrictions

Within the estuaries set out in Annex 3, the use of pots is restricted.

Pots with an entrance of less than 85mm cannot be used within the estuary areas unless the narrowest point of the entrance to the pot is fitted with a ring constructed of a rigid material. The ring width must be the same as the narrowest width of the entrance to the pot.

These Potting Permit Conditions, that include the use of rigid rings, were introduced to protect otters.

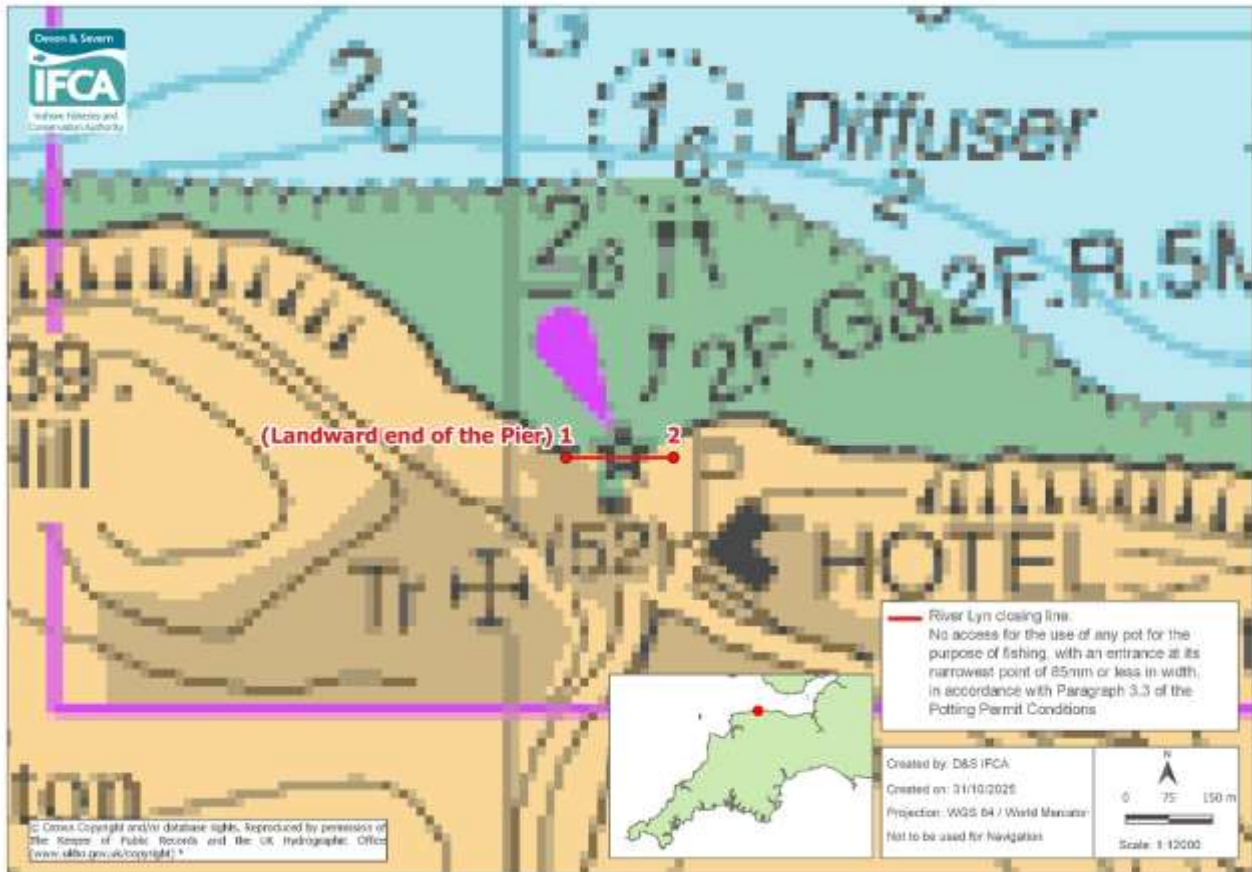
No access for the use of any pot for the purpose of fishing with an entrance at its narrowest point of 85mm or less in width, in accordance with Paragraph 3.3 of the Potting Permit Byelaw Permit Conditions, (except where Paragraphs 2.2 (a) and 2.2 (b) apply), within the D&S IFCA's District inside of a straight line drawn from Point 1 to Point 2.

Point Number	Latitude	Longitude
1 (Stert Point)	51° 13.106 N	003° 01.177 W
2 (Beacon)	51° 13.056 N	003° 00.595 W

*www.ukho.gov.uk/copyright

All Positions are expressed in degrees, decimal minutes (DDM) and shall be measured according to the WGS84 Geographic Co-ordinate System

River Lyn Closing Line



Explanation of the Access Restrictions

Within the estuaries set out in Annex 3, the use of pots is restricted.

Pots with an entrance of less than 85mm cannot be used within the estuary areas unless the narrowest point of the entrance to the pot is fitted with a ring constructed of a rigid material. The ring width must be the same as the narrowest width of the entrance to the pot.

These Potting Permit Conditions, that include the use of rigid rings, were introduced to protect otters.

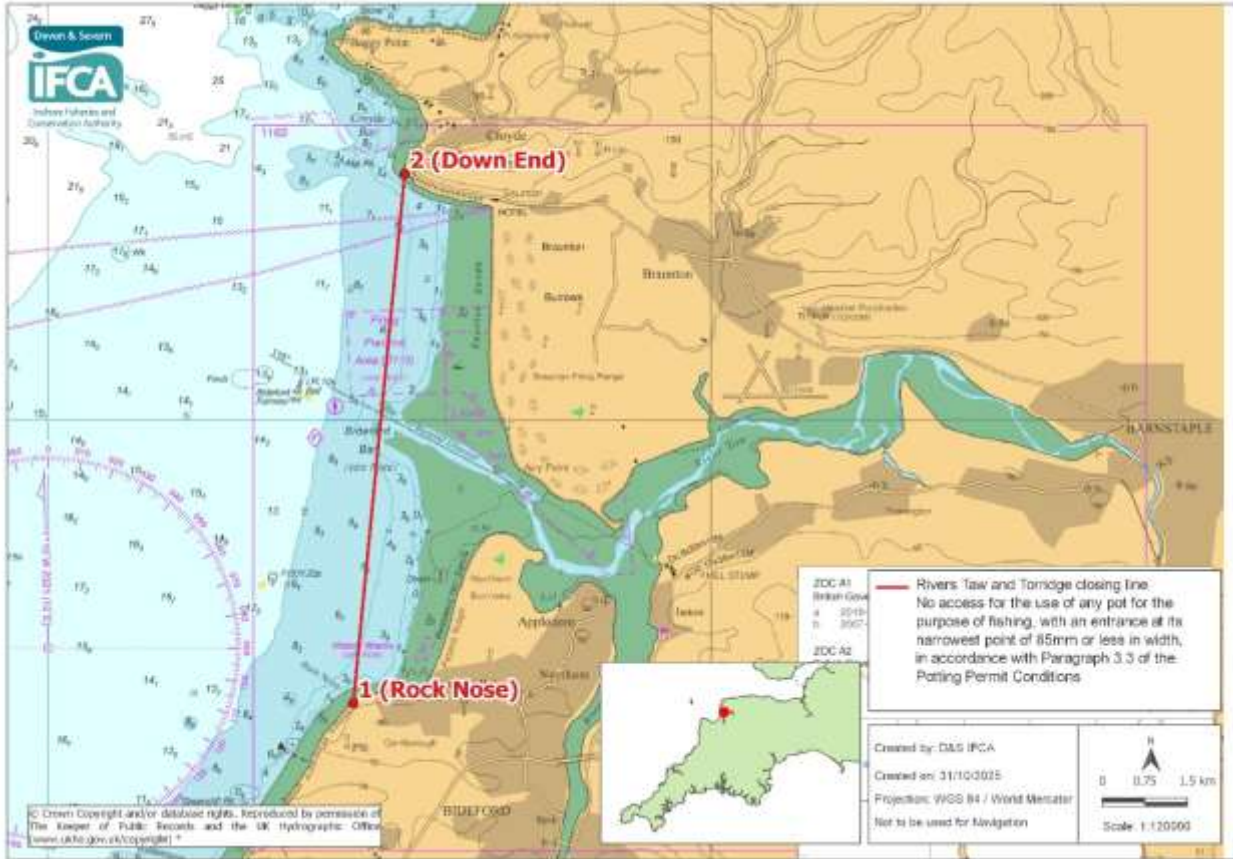
No access for the use of any pot for the purpose of fishing with an entrance at its narrowest point of 85mm or less in width, in accordance with Paragraph 3.3 of the Potting Permit Byelaw Permit Conditions, (except where Paragraphs 2.2 (a) and 2.2 (b) apply), within the D&S IFCA's District inside of a straight line drawn from Point 1 to Point 2.

Point Number	Latitude	Longitude
1 (landward end of pier)	51° 13.900 N	003° 49.918 W
2	51° 13.900 N	003° 49.758 W

*www.ukho.gov.uk/copyright

All Positions are expressed in degrees, decimal minutes (DDM) and shall be measured according to the WGS84 Geographic Co-ordinate System

Rivers Taw and Torridge Closing Line



Explanation of the Access Restrictions

Within the estuaries set out in Annex 3, the use of pots is restricted.

Pots with an entrance of less than 85mm cannot be used within the estuary areas unless the narrowest point of the entrance to the pot is fitted with a ring constructed of a rigid material. The ring width must be the same as the narrowest width of the entrance to the pot.

These Potting Permit Conditions, that include the use of rigid rings, were introduced to protect otters.

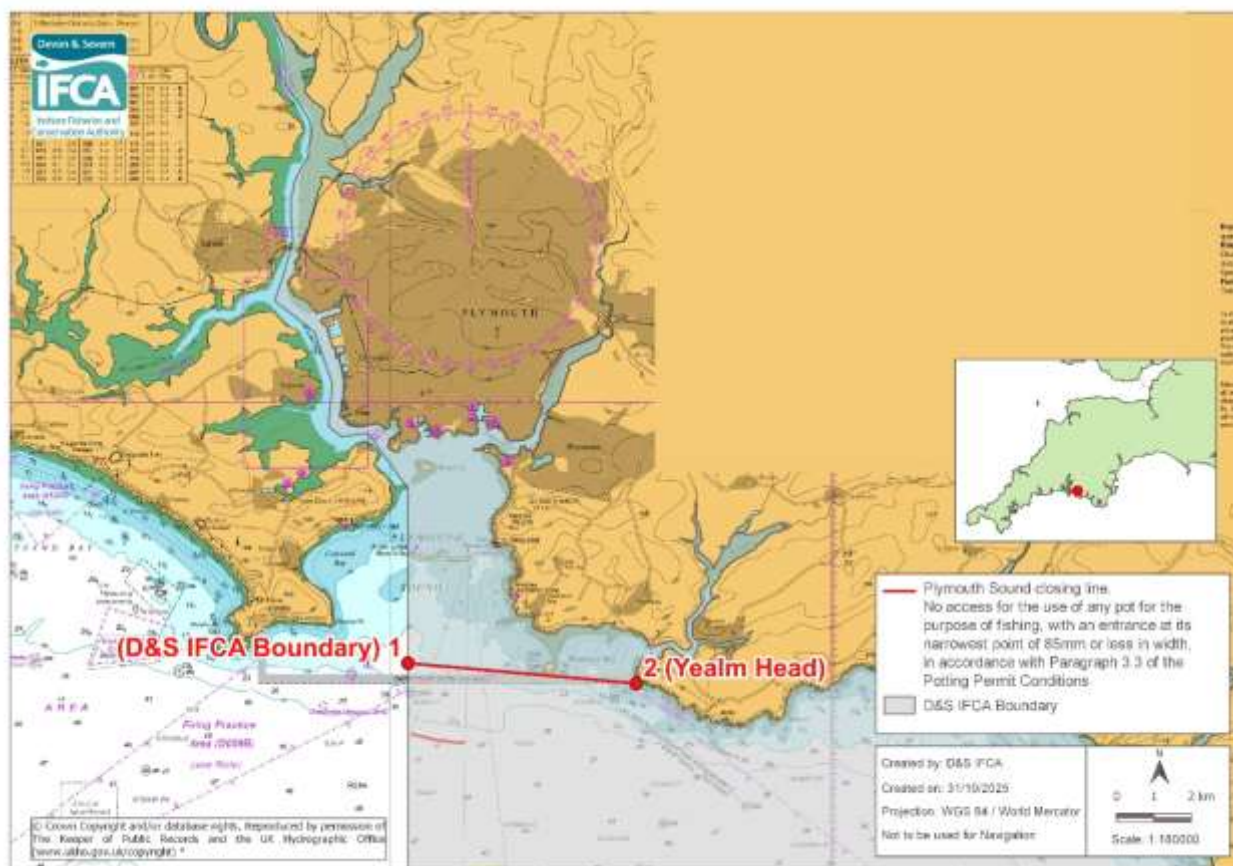
No access for the use of any pot for the purpose of fishing with an entrance at its narrowest point of 85mm or less in width, in accordance with Paragraph 3.3 of the Potting Permit Byelaw Permit Conditions, (except where Paragraphs 2.2 (a) and 2.2 (b) apply), within the D&S IFCA's District inside of a straight line drawn from Point 1 to Point 2.

Point Number	Latitude	Longitude
1 (Rock Nose)	51° 02.298 N	004° 15.396 W
2 (Down End)	51° 07.331 N	004° 14.619 W

*www.ukho.gov.uk/copyright

All Positions are expressed in degrees, decimal minutes (DDM) and shall be measured according to the WGS84 Geographic Co-ordinate System

Plymouth Sound Closing Line



Explanation of the Access Restrictions

Within the estuaries set out in Annex 3, the use of pots is restricted.

Pots with an entrance of less than 85mm cannot be used within the estuary areas unless the narrowest point of the entrance to the pot is fitted with a ring constructed of a rigid material. The ring width must be the same as the narrowest width of the entrance to the pot.

These Potting Permit Conditions, that include the use of rigid rings, were introduced to protect otters.

No access for the use of any pot for the purpose of fishing with an entrance at its narrowest point of 85mm or less in width, in accordance with Paragraph 3.3 of the Potting Permit Byelaw Permit Conditions, (except where Paragraphs 2.2 (a) and 2.2 (b) apply), within the D&S IFCA's District inside of a straight line drawn from Point 1 to Point 2.

Point Number	Latitude	Longitude
1 (D&S IFCA Boundary)	50° 18.484 N	004° 09.600 W
2 (Yealm Head)	50° 18.192 N	004° 04.458 W

*www.ukho.gov.uk/copyright

All Positions are expressed in degrees, decimal minutes (DDM) and shall be measured according to the WGS84 Geographic Co-ordinate System

River Erme Closing Line



Explanation of the Access Restrictions

Within the estuaries set out in Annex 3, the use of pots is restricted.

Pots with an entrance of less than 85mm cannot be used within the estuary areas unless the narrowest point of the entrance to the pot is fitted with a ring constructed of a rigid material. The ring width must be the same as the narrowest width of the entrance to the pot.

These Potting Permit Conditions, that include the use of rigid rings, were introduced to protect otters.

No access for the use of any pot for the purpose of fishing with an entrance at its narrowest point of 85mm or less in width, in accordance with Paragraph 3.3 of the Potting Permit Byelaw Permit Conditions, (except where Paragraphs 2.2 (a) and 2.2 (b) apply), within the D&S IFCA's District inside of a straight line drawn from Point 1 to Point 2.

Point Number	Latitude	Longitude
1 (Battisborough Island)	50° 18.243 N	003° 57.834 W
2 (Beacon Point)	50° 17.750 N	003° 56.657 W

*www.ukho.gov.uk/copyright

All Positions are expressed in degrees, decimal minutes (DDM) and shall be measured according to the WGS84 Geographic Co-ordinate System

River Avon Closing Lines



Explanation of the Access Restrictions

Within the estuaries set out in Annex 3, the use of pots is restricted.

Pots with an entrance of less than 85mm cannot be used within the estuary areas unless the narrowest point of the entrance to the pot is fitted with a ring constructed of a rigid material. The ring width must be the same as the narrowest width of the entrance to the pot.

These Potting Permit Conditions, that include the use of rigid rings, were introduced to protect otters.

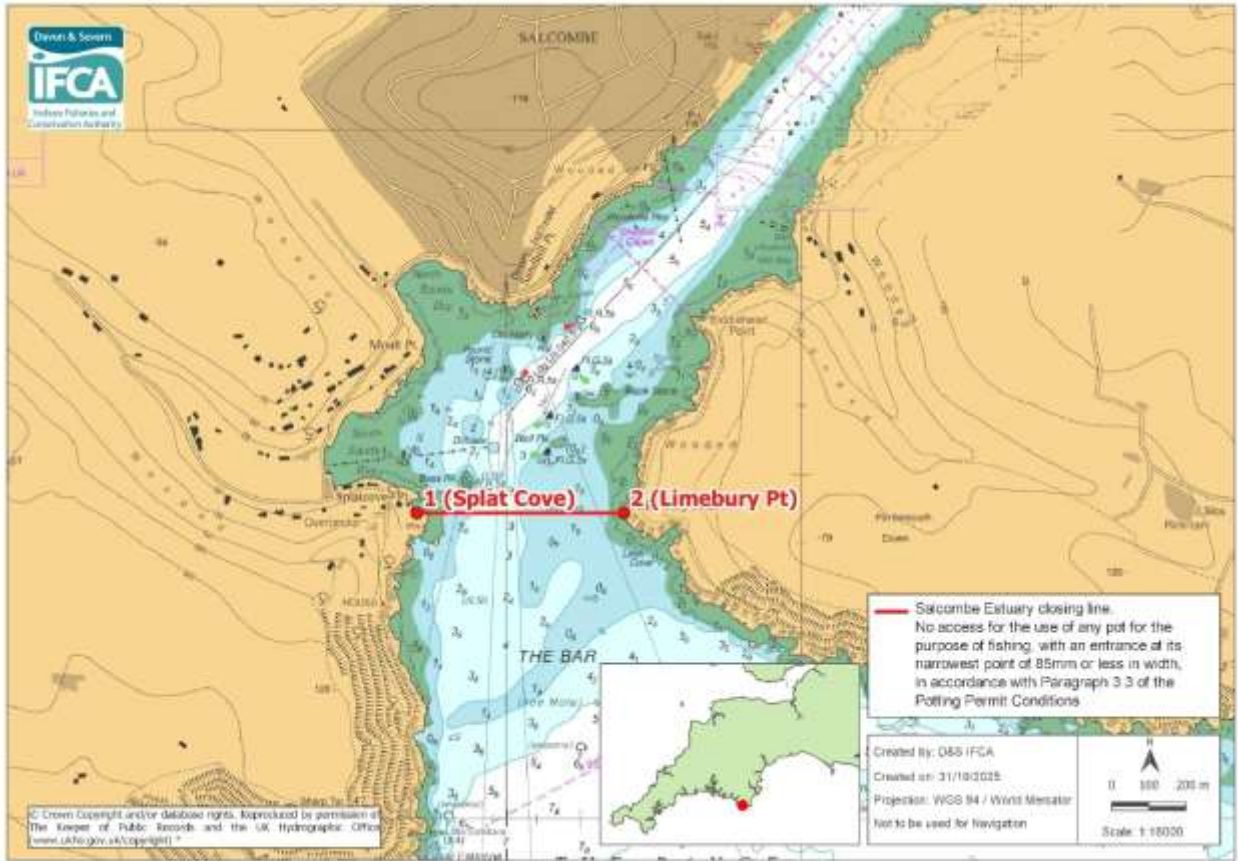
No access for the use of any pot for the purpose of fishing with an entrance at its narrowest point of 85mm or less in width, in accordance with Paragraph 3.3 of the Potting Permit Byelaw Permit Conditions, (except where Paragraphs 2.2 (a) and 2.2 (b) apply), within the D&S IFCA's District inside of a straight line drawn from Point 1 to Point 2 and a straight line drawn from Point 3 to Point 4.

Point Number	Latitude	Longitude
1 (Warren Point)	50° 17.077 N	003° 53.884 W
2 (Herringcove Point)	50° 16.876 N	003° 54.049 W
3 (Burgh Point)	50° 16.684 N	003° 54.018 W
4 (Bantham Sand)	50° 16.684 N	003° 52.676 W

*www.ukho.gov.uk/copyright

All Positions are expressed in degrees, decimal minutes (DDM) and shall be measured according to the WGS84 Geographic Co-ordinate System

Salcombe Estuary Closing Line



Explanation of the Access Restrictions

Within the estuaries set out in Annex 3, the use of pots is restricted.

Pots with an entrance of less than 85mm cannot be used within the estuary areas unless the narrowest point of the entrance to the pot is fitted with a ring constructed of a rigid material. The ring width must be the same as the narrowest width of the entrance to the pot.

These Potting Permit Conditions, that include the use of rigid rings, were introduced to protect otters.

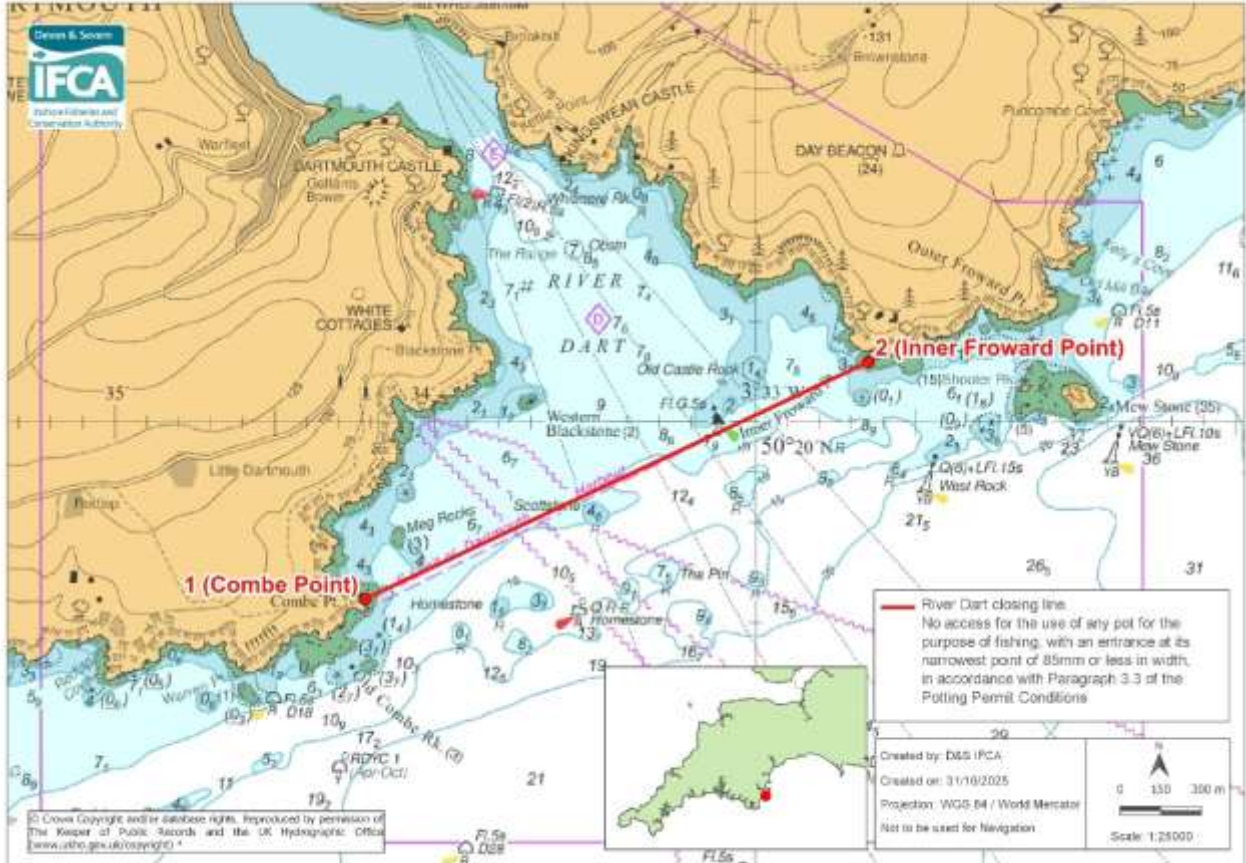
No access for the use of any pot for the purpose of fishing with an entrance at its narrowest point of 85mm or less in width, in accordance with Paragraph 3.3 of the Potting Permit Byelaw Permit Conditions, (except where Paragraphs 2.2 (a) and 2.2 (b) apply), within the D&S IFCA's District inside of a straight line drawn from Point 1 to Point 2.

Point Number	Latitude	Longitude
1 (Splat Cove)	50° 13.444 N	003° 46.871 W
2 (Limebury Point)	50° 13.444 N	003° 46.402 W

*www.ukho.gov.uk/copyright

All Positions are expressed in degrees, decimal minutes (DDM) and shall be measured according to the WGS84 Geographic Co-ordinate System

River Dart Closing Line



Explanation of the Access Restrictions

Within the estuaries set out in Annex 3, the use of pots is restricted.

Pots with an entrance of less than 85mm cannot be used within the estuary areas unless the narrowest point of the entrance to the pot is fitted with a ring constructed of a rigid material. The ring width must be the same as the narrowest width of the entrance to the pot.

These Potting Permit Conditions, that include the use of rigid rings, were introduced to protect otters.

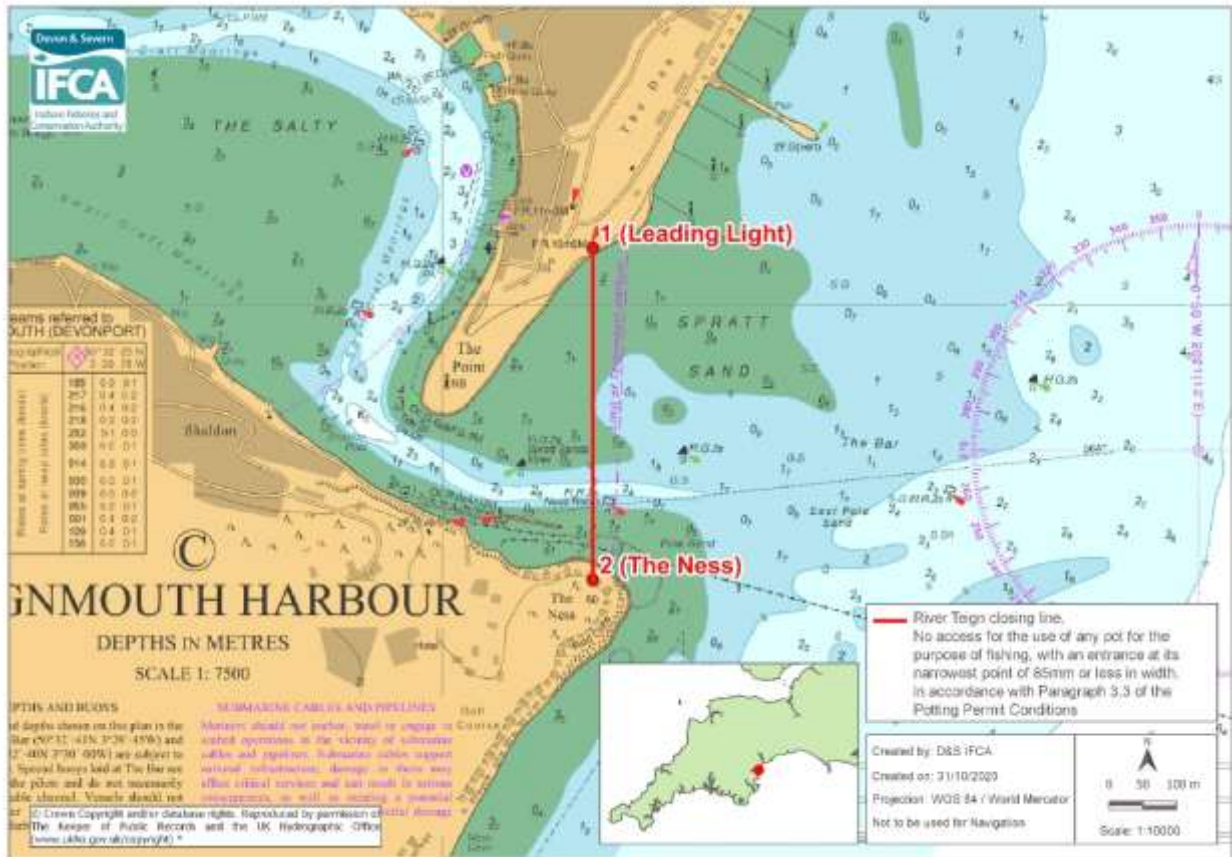
No access for the use of any pot for the purpose of fishing with an entrance at its narrowest point of 85mm or less in width, in accordance with Paragraph 3.3 of the Potting Permit Byelaw Permit Conditions, (except where Paragraphs 2.2 (a) and 2.2 (b) apply), within the D&S IFCA's District inside of a straight line drawn from Point 1 to Point 2.

Point Number	Latitude	Longitude
1 (Combe Point)	50° 19.648 N	003° 34.220 W
2 (Inner Froward Point)	50° 20.121 N	003° 32.648 W

*www.ukho.gov.uk/copyright

All Positions are expressed in degrees, decimal minutes (DDM) and shall be measured according to the WGS84 Geographic Co-ordinate System

River Teign Closing Line



Explanation of the Access Restrictions

Within the estuaries set out in Annex 3, the use of pots is restricted.

Pots with an entrance of less than 85mm cannot be used within the estuary areas unless the narrowest point of the entrance to the pot is fitted with a ring constructed of a rigid material. The ring width must be the same as the narrowest width of the entrance to the pot.

These Potting Permit Conditions, that include the use of rigid rings, were introduced to protect otters.

No access for the use of any pot for the purpose of fishing with an entrance at its narrowest point of 85mm or less in width, in accordance with Paragraph 3.3 of the Potting Permit Byelaw Permit Conditions, (except where Paragraphs 2.2 (a) and 2.2 (b) apply), within the D&S IFCA's District inside of a straight line drawn from Point 1 to Point 2.

Point Number	Latitude	Longitude
1 (Leading Light)	50° 32.546 N	003° 29.810 W
2 (The Ness)	50° 32.279 N	003° 29.810 W

*www.ukho.gov.uk/copyright

All Positions are expressed in degrees, decimal minutes (DDM) and shall be measured according to the WGS84 Geographic Co-ordinate System

River Exe Closing Line



Explanation of the Access Restrictions

Within the estuaries set out in Annex 3, the use of pots is restricted.

Pots with an entrance of less than 85mm cannot be used within the estuary areas unless the narrowest point of the entrance to the pot is fitted with a ring constructed of a rigid material. The ring width must be the same as the narrowest width of the entrance to the pot.

These Potting Permit Conditions, that include the use of rigid rings, were introduced to protect otters.

No access for the use of any pot for the purpose of fishing with an entrance at its narrowest point of 85mm or less in width, in accordance with Paragraph 3.3 of the Potting Permit Byelaw Permit Conditions, (except where Paragraphs 2.2 (a) and 2.2 (b) apply), within the D&S IFCA's District inside of a straight line drawn from Point 1 to Point 2.

Point Number	Latitude	Longitude
1 (Langstone Point)	50° 35.518 N	003° 26.629 W
2 (Orcombe Point)	50° 36.421 N	003° 23.108 W

*www.ukho.gov.uk/copyright

All Positions are expressed in degrees, decimal minutes (DDM) and shall be measured according to the WGS84 Geographic Co-ordinate System

River Otter Closing Lines



Explanation of the Access Restrictions

Within the estuaries set out in Annex 3, the use of pots is restricted.

Pots with an entrance of less than 85mm cannot be used within the estuary areas unless the narrowest point of the entrance to the pot is fitted with a ring constructed of a rigid material. The ring width must be the same as the narrowest width of the entrance to the pot.

These Potting Permit Conditions, that include the use of rigid rings, were introduced to protect otters.

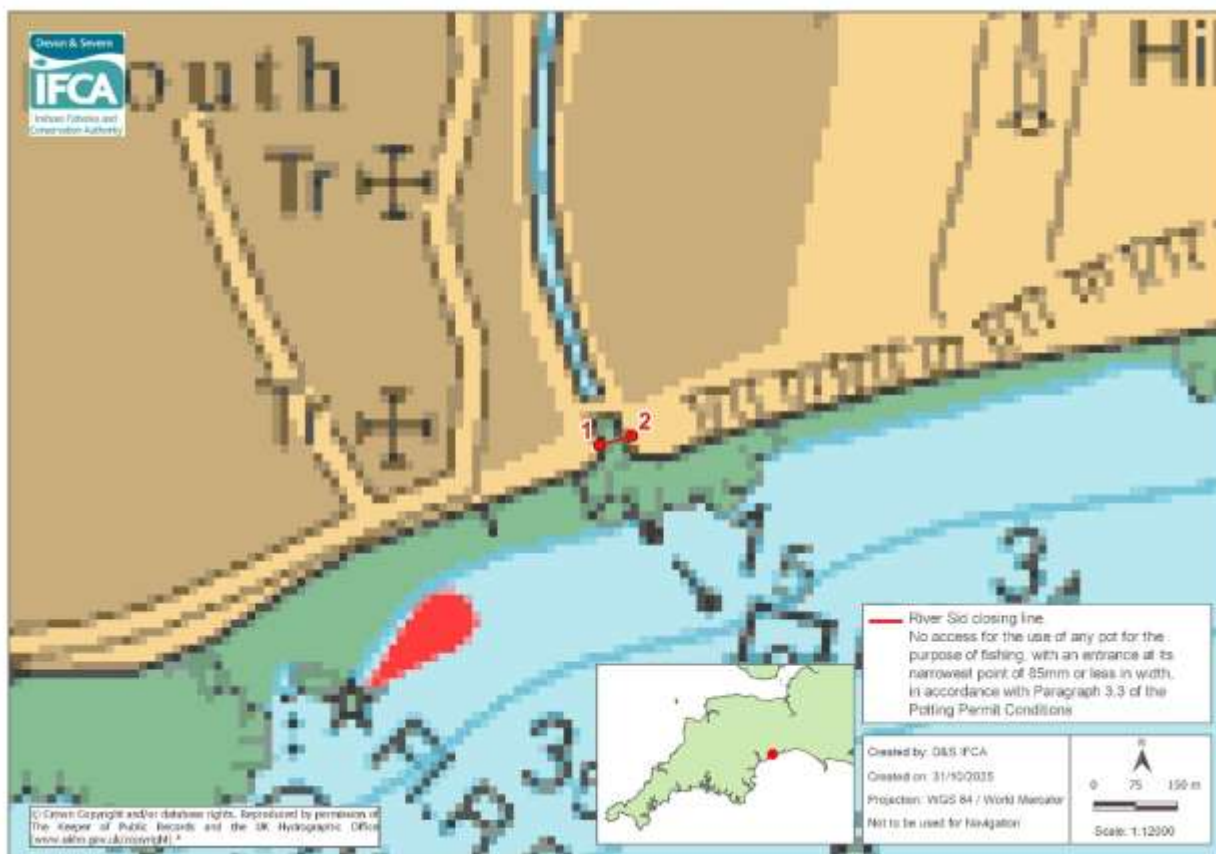
No access for the use of any pot for the purpose of fishing with an entrance at its narrowest point of 85mm or less in width, in accordance with Paragraph 3.3 of the Potting Permit Byelaw Permit Conditions, (except where Paragraphs 2.2 (a) and 2.2 (b) apply), within the D&S IFCA's District inside of a straight line drawn from Point 1 to Point 2 and a straight line drawn from Point 2 to Point 3.

Point Number	Latitude	Longitude
1	50° 37.791 N	003° 18.676 W
2 (Otterton Ledge)	50° 37.626 N	003° 18.399 W
3 (Otterton Point)	50° 37.821 N	003° 18.143 W

*www.ukho.gov.uk/copyright

All Positions are expressed in degrees, decimal minutes (DDM) and shall be measured according to the WGS84 Geographic Co-ordinate System

River Sid Closing Line



Explanation of the Access Restrictions

Within the estuaries set out in Annex 3, the use of pots is restricted.

Pots with an entrance of less than 85mm cannot be used within the estuary areas unless the narrowest point of the entrance to the pot is fitted with a ring constructed of a rigid material. The ring width must be the same as the narrowest width of the entrance to the pot.

These Potting Permit Conditions, that include the use of rigid rings, were introduced to protect otters.

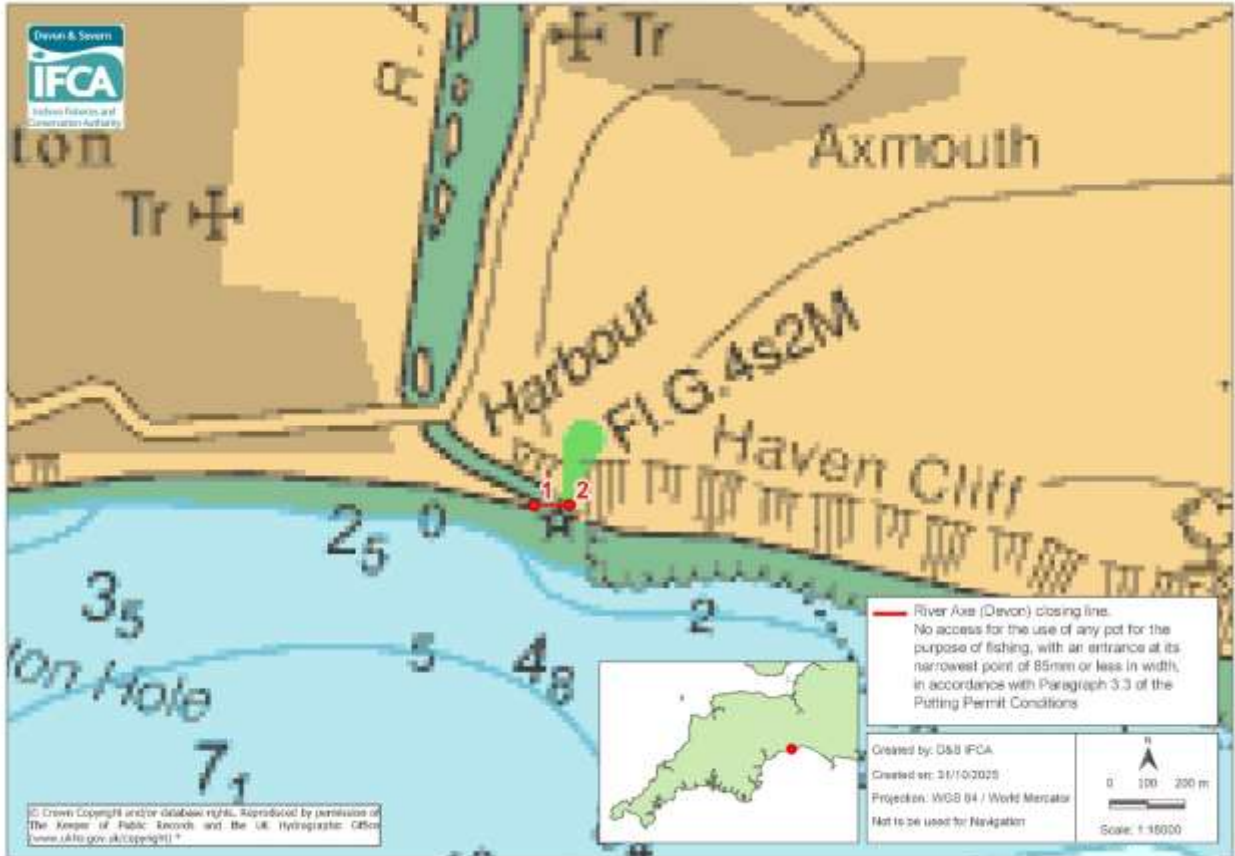
No access for the use of any pot for the purpose of fishing with an entrance at its narrowest point of 85mm or less in width, in accordance with Paragraph 3.3 of the Potting Permit Byelaw Permit Conditions, (except where Paragraphs 2.2 (a) and 2.2 (b) apply), within the D&S IFCA's District inside of a straight line drawn from Point 1 to Point 2.

Point Number	Latitude	Longitude
1	50° 40.726 N	003° 14.054 W
2	50° 40.735 N	003° 14.005 W

*www.ukho.gov.uk/copyright

All Positions are expressed in degrees, decimal minutes (DDM) and shall be measured according to the WGS84 Geographic Co-ordinate System

River Axe (Devon) Closing Line



Explanation of the Access Restrictions

Within the estuaries set out in Annex 3, the use of pots is restricted.

Pots with an entrance of less than 85mm cannot be used within the estuary areas unless the narrowest point of the entrance to the pot is fitted with a ring constructed of a rigid material. The ring width must be the same as the narrowest width of the entrance to the pot.

These Potting Permit Conditions, that include the use of rigid rings, were introduced to protect otters.

No access for the use of any pot for the purpose of fishing with an entrance at its narrowest point of 85mm or less in width, in accordance with Paragraph 3.3 of the Potting Permit Byelaw Permit Conditions, (except where Paragraphs 2.2 (a) and 2.2 (b) apply), within the D&S IFCA's District inside of a straight line drawn from Point 1 to Point 2.

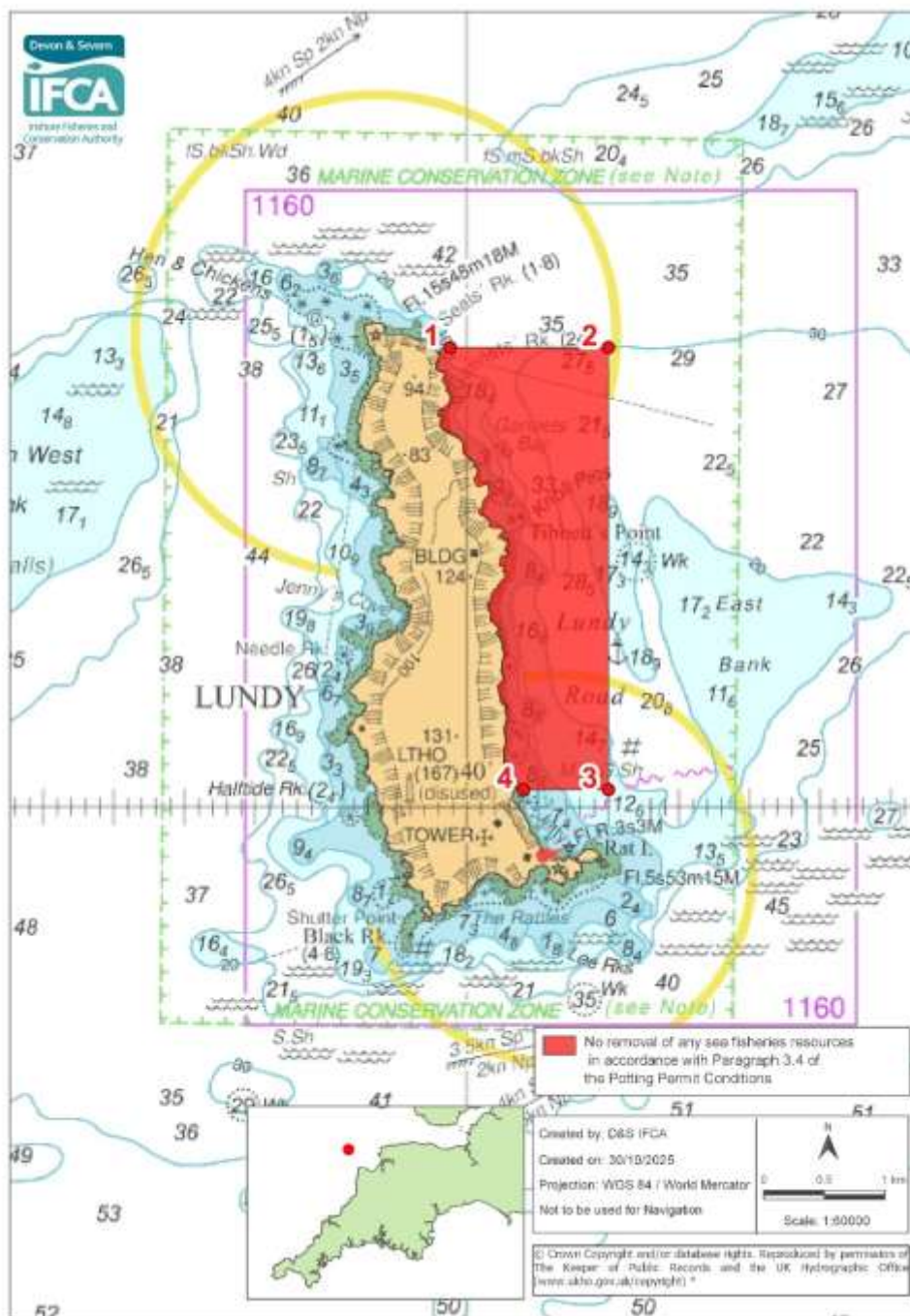
Point Number	Latitude	Longitude
1	50° 42.135 N	003° 03.354 W
2	50° 42.135 N	003° 03.274 W

*www.ukho.gov.uk/copyright

All Positions are expressed in degrees, decimal minutes (DDM) and shall be measured according to the WGS84 Geographic Co-ordinate System

Annex 4 - No Removal of Sea Fisheries Resources

Lundy No Take Zone



Explanation of the Access Restrictions:

No sea fisheries resources can be removed from the Lundy No Take Zone, Lundy Island (Annex 4).

[*www.ukho.gov.uk/copyright](http://www.ukho.gov.uk/copyright)

All Positions are expressed in degrees, decimal minutes (DDM) and shall be measured according to the WGS84 Geographic Co-ordinate System

No removal of any sea fish resources, in accordance with Paragraph 3.4 of the Potting Permit Byelaw Permit Conditions, within the D&S IFCA's District outlined by the following points plotted sequentially and joined using straight lines (unless otherwise indicated) from Point 1 to Point 4, then returning to Point 1. The landward boundary follows Mean High Water.

Point Number	Latitude	Longitude
1	51°12.040 N	004°40.120 W
2	51°12.040 N	004°39.000 W
3	51°10.070 N	004°39.000 W
4	51°10.070 N	004°39.600 W
The landward boundary follows mean high water to Point 1		

End.

[*www.ukho.gov.uk/copyright](http://www.ukho.gov.uk/copyright)

All Positions are expressed in degrees, decimal minutes (DDM) and shall be measured according to the WGS84 Geographic Co-ordinate System