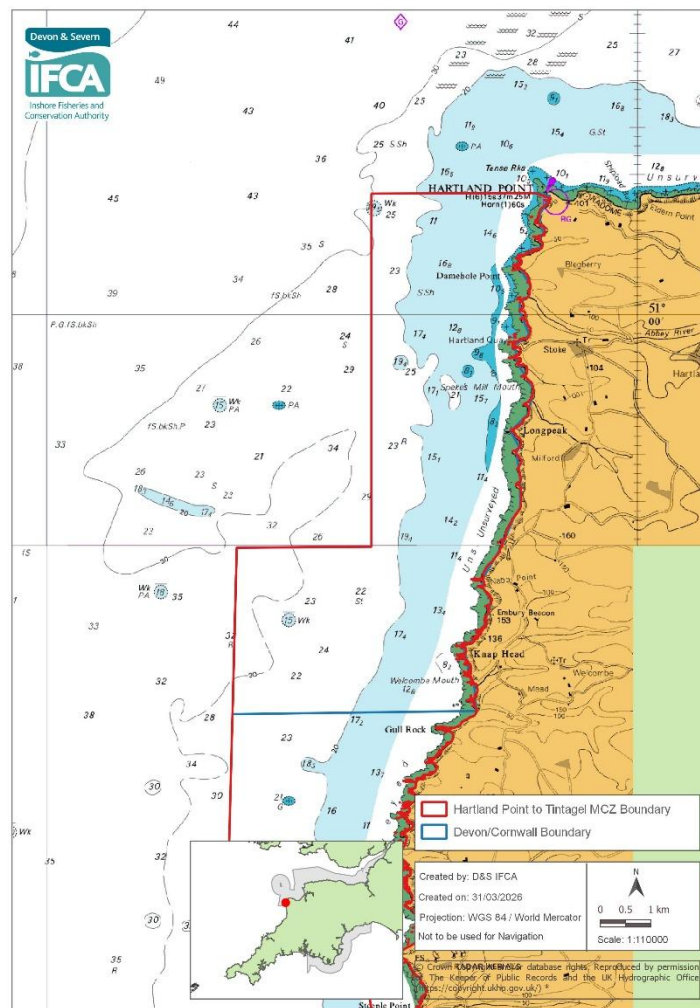


Hartland Point to Tintagel Marine Conservation Zone, Monitoring and Control Plan Review 2025: Towed (demersal) Trawl Gear.



Version control history			
Author	Date	Comment	Version
Lauren Parkhouse	March 2026	Initial Draft	0.1
Sarah Clark	9t April 2026	Final review before publishing	1.0

Background of Monitoring and Control Plan

All IFCA's have responsibilities in relation to the management of fishing activities in Marine Conservation Zones (MCZ) as laid out in Ss 124 to 126 and Ss 154 to 157 of the Marine and Coastal Access Act 2009. In order to document and determine whether management measures are required to achieve the conservation objectives of a MCZ, MCZ assessments are carried out for gear/feature interactions within a site.

[Version 2](#) of the MCZ assessment carried out in 2022 for the interaction of towed (demersal) trawl gear and rock features of the Hartland Point to Tintagel (HPT) MCZ concluded that at current levels of effort, i.e. no activity occurring, there will be no adverse effects from this gear type of the rock features of the MCZ. However, if the activities were to occur on the features listed in the assessment, the evidence suggests there could be an adverse effect, and this could hinder the achievement of the conservation objectives of the features.

Following decisions made by the B&PSC at its meeting on 5th September 2024, D&S IFCA liaised with Natural England on the possible implementation of a [Monitoring and Control Plan \(M&CP\)](#) for demersal trawl gear. The M&CP monitors levels of activity to ensure appropriate management is put in place if towed (demersal) gear vessels were to access the MCZ in the future.

Monitoring Requirements

In the first instance, D&S IFCA will monitor the number of Mobile Fishing Permit holders which could potentially fish in the HPT MCZ. This will give officers a list of vessels which need to be monitored.

IVMS data will be reviewed for the site on a weekly basis. An internal record will be created for these weekly reviews with a review summary being produced at the end of each year and sent to Natural England (NE).

If any activity is identified in the weekly review, D&S IFCA will arrange a meeting with NE to discuss next steps. In September 2024, D&S IFCA's Byelaw and Permitting Sub-Committee made the decision that if required Officers will conduct a formal consultation on limiting access to demersal trawl gear vessel within the Hartland Point to Tintagel MCZ.

Summary 2025

Monitoring of IVMS data was carried out weekly from 1st January until the 31st of July 2025 for demersal towed gear in the Hartland Point to Tintagel MCZ. During this time, there was no activity within the site. Monitoring was halted on the 1st of August when Succorfish stopped sending data to the UK IVMS hub. Monitoring can now continue using REWIRE devices. To mitigate the issue of Succorfish data not being sent to the UK IVMS hub, D&S IFCA was able to roll out REWIRE devices to affected vessels. The Environment Team now has access to data from these vessels so will be able to continue with the M&C Plan.

At this time no further action is required and monitoring will continue on a weekly basis with any changes in activity being reported to NE.