



**Devon and Severn IFCA  
Mobile Fishing Permit Byelaw  
2022  
Category One Permit Condition  
Annexes**

**1<sup>st</sup> July 2026**

## Contents

<b>Important Information</b> .....	3
<b>Annexes 1- 9 Spatial Restrictions: Marine Protected Areas</b> .....	4
<b>Annex 1: No Access Area - Lundy Special Area of Conservation and Lundy Marine Conservation Zone</b> .....	4
<b>Annex 1(a): Access Area - Lundy Special Area of Conservation and Lundy Marine Conservation Zone</b> .....	6
<b>Annex 1(b): Access Area - Lundy Special Area of Conservation and Lundy Marine Conservation Zone</b> .....	8
<b>Annex 2: No Access Area - Lyme Bay section of the Lyme Bay and Torbay Special Area of Conservation</b> .....	10
<b>Annex 3: No Access Area - Tor Bay section of the Lyme Bay and Torbay Special Area of Conservation and the Torbay Marine Conservation Zone</b> .....	13
<b>Annex 3(a): Access Areas - Tor Bay section of the Lyme Bay and Torbay Special Area of Conservation and the Torbay Marine Conservation Zone</b> .....	16
<b>Area 1</b> .....	17
<b>Area 2</b> .....	17
<b>Area 3</b> .....	18
<b>Area 4</b> .....	19
<b>Annex 3(b): Access Area - Tor Bay section of the Lyme Bay and Torbay Special Area of Conservation and the Torbay Marine Conservation Zone</b> .....	20
<b>Annex 4: No Access Area - Plymouth Sound and Estuaries Special Area of Conservation (including the Rivers Plym, Tamar, Tavy and Yealm)</b> .....	22
<b>Annex 4(a): Access Area - Plymouth Sound and Estuaries Special Area of Conservation (including the Rivers Plym, Tamar, Tavy and Yealm)</b> .....	24
<b>Annex 5: No Access Area - Part of the Start Point to Plymouth Sound and Eddystone Special Area of Conservation, and part of the Skerries Bank and Surrounds Marine Conservation Zone</b> .....	26
<b>Area 1 - South of Salcombe</b> .....	27
<b>Area 2 - Bigbury Bay</b> .....	28
<b>Annex 5(a): Access Areas - Part of Start Point to Plymouth Sound and Eddystone Special Area of Conservation, and part of the Skerries Bank and Surrounds Marine Conservation Zone</b> .....	30
<b>Area A</b> .....	31
<b>Area B</b> .....	32
<b>Area D</b> .....	32
<b>Permit Condition 11.4 Table 1</b> .....	33
<b>Annex 6: No Access Area - Severn Estuary Special Area of Conservation</b> .....	34
<b>Annex 7: No Access Area - Hartland Point to Tintagel Marine Conservation Zone</b> ....	36
<b>Annex 8: No Access Area - Bideford to Foreland Point Marine Conservation Zone</b> ..	38
<b>Annex 8(a): Access Area - Bideford to Foreland Point Marine Conservation Zone</b> ....	40

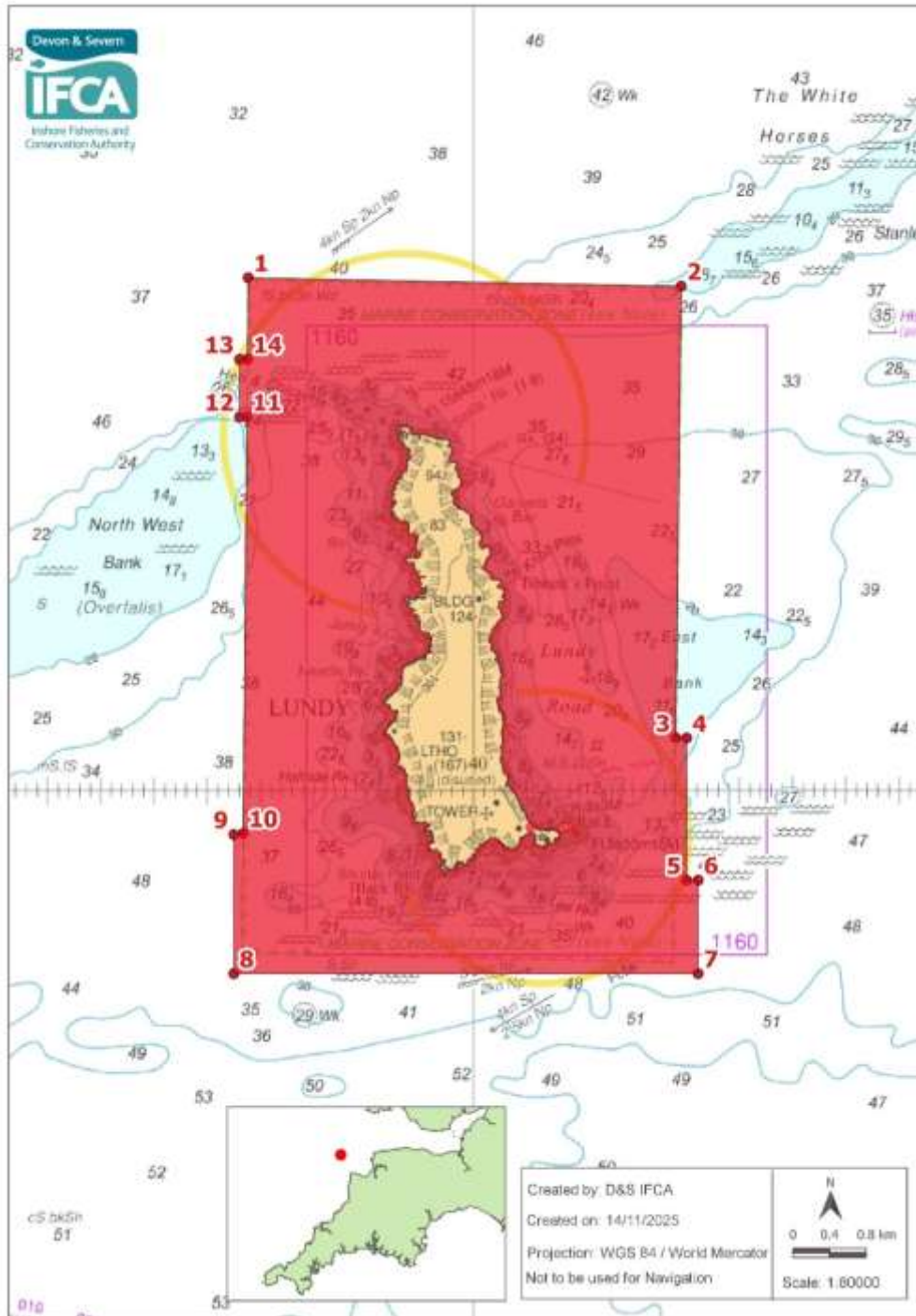
<b>Annex 9: No Access Area - Morte Platform Marine Conservation</b> .....	42
<b>Annex 9(a): Access Area - Morte Platform Marine Conservation Zone</b> .....	44
<b>Annex 10: No Removal of Spiny Lobster – Marine Conservation Zones</b> .....	47
<b>Annex 10: Lundy Marine Conservation Zone</b> .....	47
<b>Annex 10: Skerries Bank and Surrounds Marine Conservation Zone</b> .....	49
<b>Annex 10: Bideford to Foreland Point Marine Conservation Zone</b> .....	51
<b>Annex 11: No Access Area - Heritage Assets Sites</b> .....	53
<b>Annex 12: No Access Areas - Coastal Mariculture Sites</b> .....	55
<b>Annex 12: Lyme Bay Areas A and B</b> .....	55
<b>Annex 12: Tor Bay Area C</b> .....	56
<b>Area A Lyme Bay</b> .....	59
<b>Area B Lyme Bay</b> .....	59
<b>Area C Tor Bay</b> .....	60
<b>Area D Labrador Bay</b> .....	60
<b>Area E Bideford Bay</b> .....	60
<b>Annex 13: Non-Reporting of a Vessel Monitoring Device</b> .....	61
<b>Annex 14: Measurement of the Size of a Marine Organism and Identification of a 'V-Notched' Lobster</b> .....	67

## Important Information


1. All positions in these Annexes are expressed in Degrees Decimal Minutes (DDM) and shall be measured according to the WGS84 Geographic Co-ordinate System.
2. Acknowledgement in relation to the use of UKHO charts in these Annexes:  
© Crown Copyright and/or database rights. Reproduced by permission of The Keeper of Public Records and the UK Hydrographic Office  
<https://copyright.ukho.gov.uk/>
3. Where applicable, the landward boundary shown in the Annex charts follows Mean High Water.

# Annexes 1- 9 Spatial Restrictions: Marine Protected Areas

## Annex 1: No Access Area - Lundy Special Area of Conservation and Lundy Marine Conservation Zone



### Legend

-  No access in accordance with paragraph 7.1 of the Category One Mobile Fishing Permit Conditions unless the demersal mobile fishing gear is stowed on deck and no fishing is taking place; or demersal trawl gear, or scallop dredges or alternative dredges are being used for fishing within the areas set out on Annex 1(a) and Annex 1(b).

### **Explanation of the Access Restriction**

Annex 1 shows the restricted access area that is relevant to demersal mobile fishing gear.

There is limited access to different areas depending on the type of demersal mobile fishing gear being used for fishing.

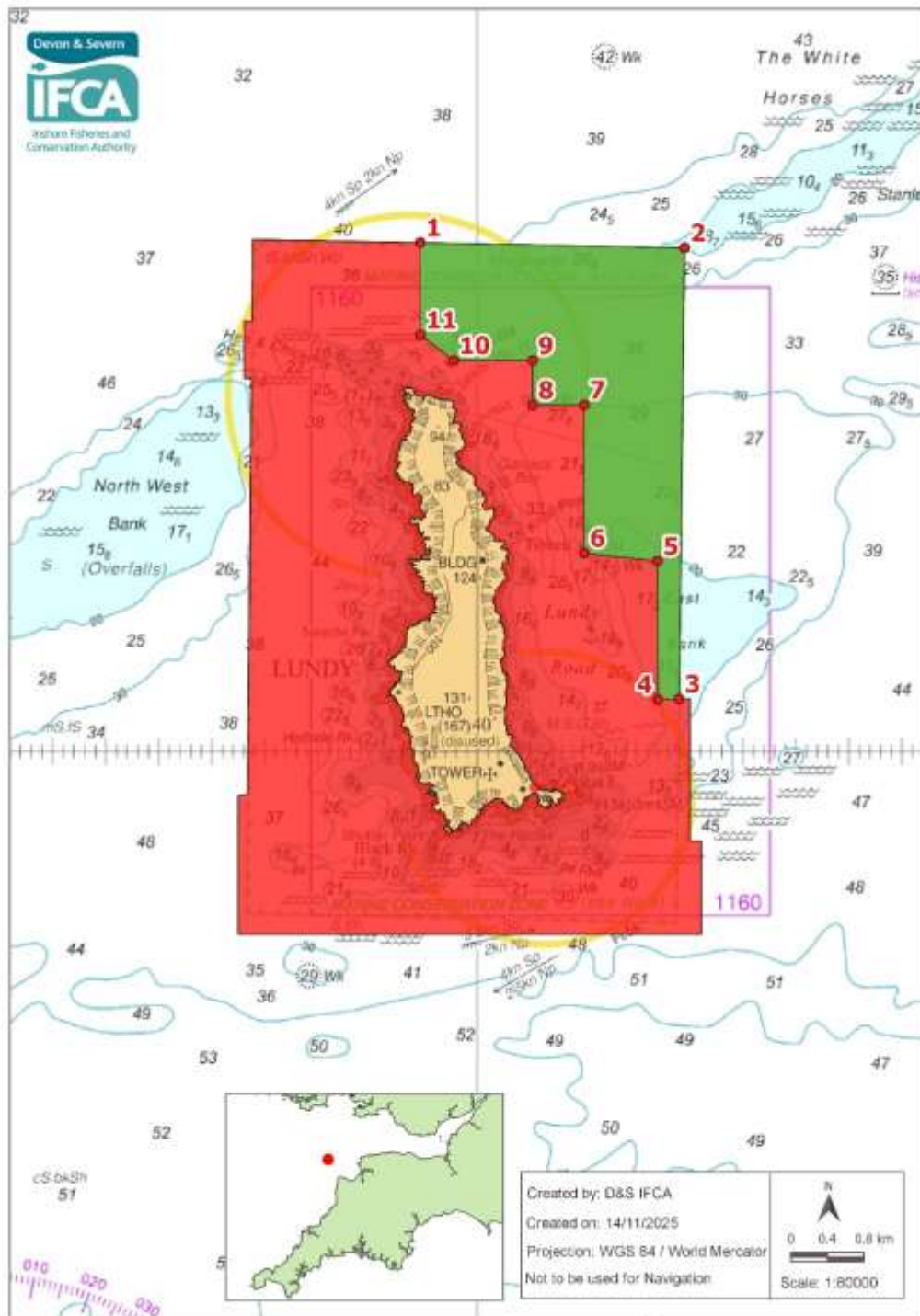
Annex 1(a) below sets out the access areas for fishing with demersal trawl gear and Annex 1(b) below sets out the access areas for fishing with scallop gear and alternative dredges.

Where Annex 1(a) and Annex 1(b) do not apply, within the red area there is no access to demersal mobile fishing vessels unless the demersal mobile fishing gear is stowed on deck and no fishing is taking place.

**Annex 1 - Restricted access for mobile fishing vessels operating demersal mobile fishing gear in the area defined by the following points plotted sequentially and joined using straight lines (unless otherwise indicated) from Point 1 to Point 14 then returning to Point 1:**

<b>Point</b>	<b>Latitude</b>	<b>Longitude</b>
1	51° 13.022 N	004° 42.116 W
2	51° 12.972 N	004° 38.049 W
3	51° 10.303 N	004° 38.100 W
4	51° 10.303 N	004° 37.998 W
5	51° 09.462 N	004° 37.998 W
6	51° 09.462 N	004° 37.890 W
7	51° 08.910 N	004° 37.890 W
8	51° 08.910 N	004° 42.252 W
9	51° 09.732 N	004° 42.252 W
10	51° 09.739 N	004° 42.164 W
11	51° 12.200 N	004° 42.128 W
12	51° 12.200 N	004° 42.198 W
13	51° 12.540 N	004° 42.198 W
14	51° 12.540 N	004° 42.123 W

## Annex 1(a): Access Area - Lundy Special Area of Conservation and Lundy Marine Conservation Zone



### Legend

- Access in accordance with paragraph 7.1(b) of the Category One Mobile Fishing Permit Conditions where demersal trawl gear is used for fishing within the area set out in Annex 1(a).

### **Explanation of the Access Restriction**

Annex 1(a) shows the green access area where demersal trawl gear can be used for fishing.

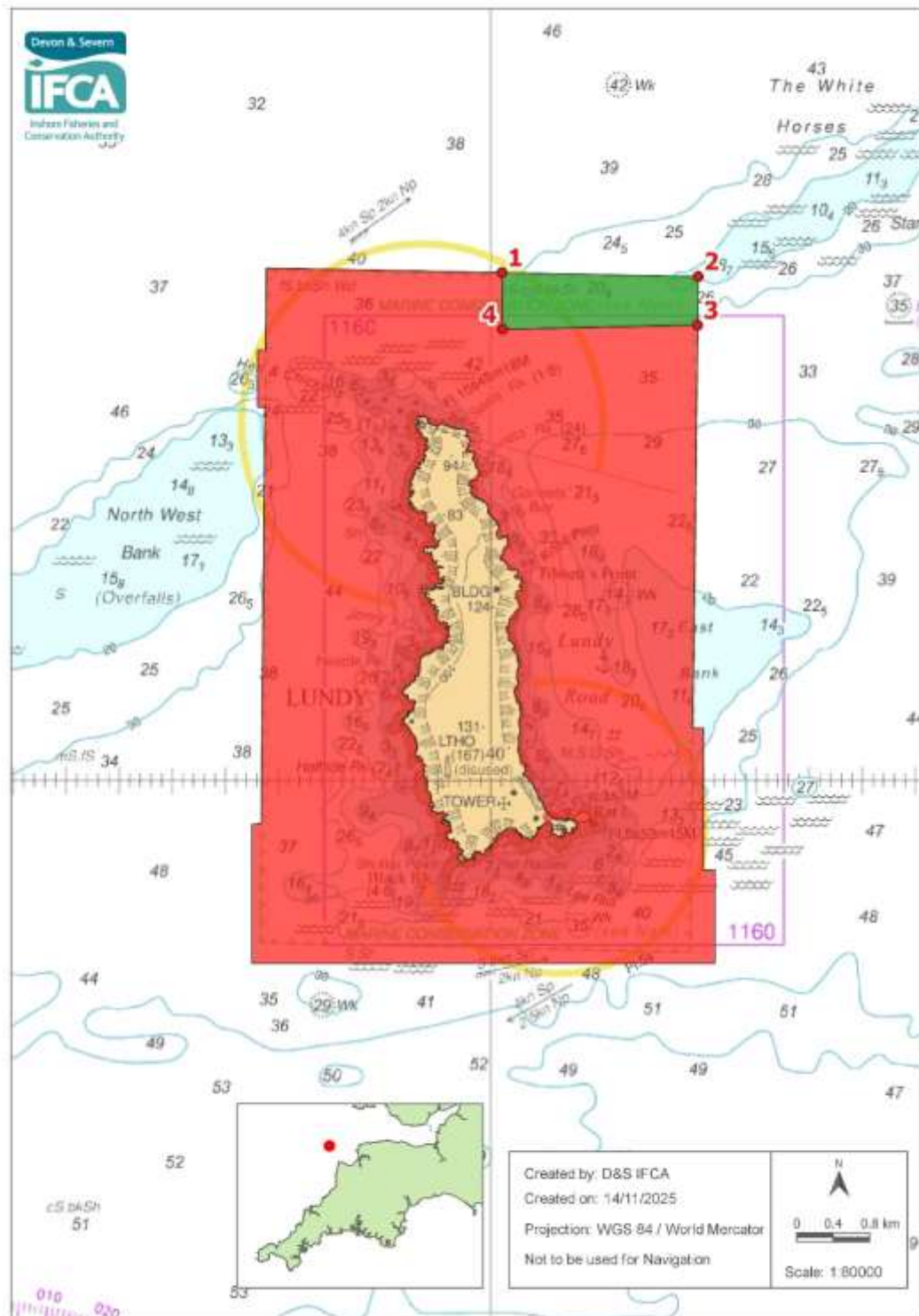
If not fishing in the green access area, all demersal mobile fishing gear must be stowed on deck.

Within the red area there is no access to demersal mobile fishing vessels unless the demersal mobile fishing gear is stowed on deck and no fishing is taking place.

**Annex 1(a) - Access for mobile fishing vessels operating demersal trawl gear in the area defined by the following points plotted sequentially and joined using straight lines (unless otherwise indicated) from Point 1 to Point 11 then returning to Point 1:**

<b>Point</b>	<b>Latitude</b>	<b>Longitude</b>
1	51° 13.003 N	004° 40.538 W
2	51° 12.972 N	004° 38.049 W
3	51° 10.303 N	004° 38.100 W
4	51° 10.300 N	004° 38.300 W
5	51° 11.118 N	004° 38.304 W
6	51° 11.166 N	004° 38.994 W
7	51° 12.043 N	004° 38.994 W
8	51° 12.042 N	004° 39.480 W
9	51° 12.306 N	004° 39.480 W
10	51° 12.306 N	004° 40.224 W
11	51° 12.456 N	004° 40.536 W

## Annex 1(b): Access Area - Lundy Special Area of Conservation and Lundy Marine Conservation Zone



### Legend

- Access in accordance with paragraph 7.1(c) of the Category One Mobile Fishing Permit Conditions where scallop dredges or alternative dredges are used for fishing within the area set out in Annex 1(b).

### **Explanation of the Access Restriction**

Annex 1(b) shows the green access area where scallop dredges or alternative dredges can be used for fishing.

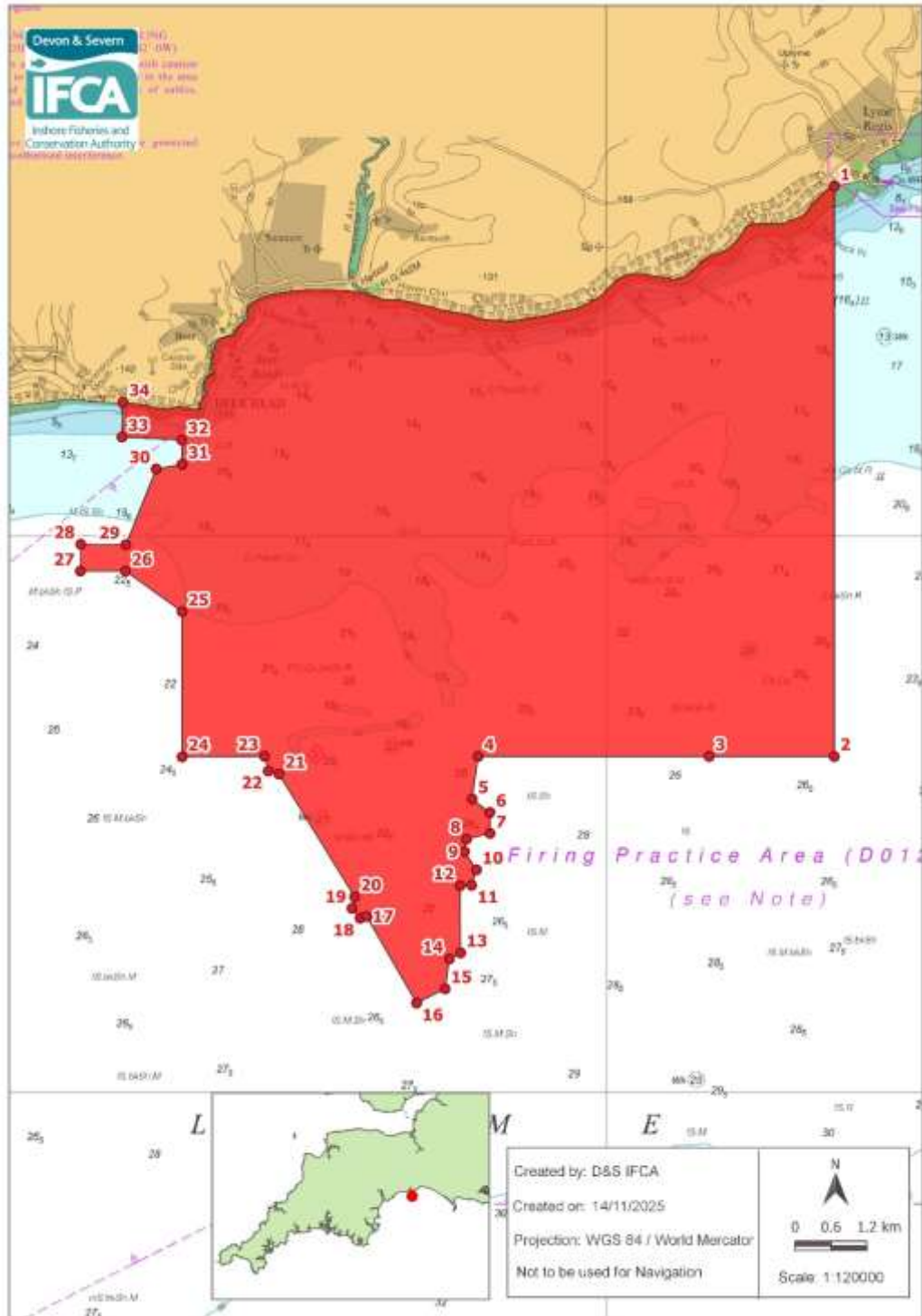
If not fishing in the green access area, all demersal mobile fishing gear must be stowed on deck.

Within the red area there is no access to demersal mobile fishing vessels unless the demersal mobile fishing gear is stowed on deck and no fishing is taking place.

**Annex 1(b) - Access for mobile fishing vessels operating scallop dredges or alternative dredges in the area defined by the following points plotted sequentially and joined using straight lines (unless otherwise indicated) from Point 1 to Point 4 then returning to Point 1:**

<b>Point</b>	<b>Latitude</b>	<b>Longitude</b>
1	51° 12.995 N	004° 38.895 W
2	51° 12.972 N	004° 38.049 W
3	51° 12.684 N	004° 38.054 W
4	51° 12.660 N	004° 39.890 W

## Annex 2: No Access Area - Lyme Bay section of the Lyme Bay and Torbay Special Area of Conservation



### Legend



No access in accordance with paragraph 7.2 of the Category One Mobile Fishing Permit Conditions unless the demersal mobile fishing gear is stowed on deck and no fishing is taking place.

### Explanation of the Access Restriction

Annex 2 shows the no access area that is relevant to demersal mobile fishing gear.

Within the red area there is no access to mobile fishing vessels unless the demersal mobile fishing gear is stowed on deck and no fishing is taking place.

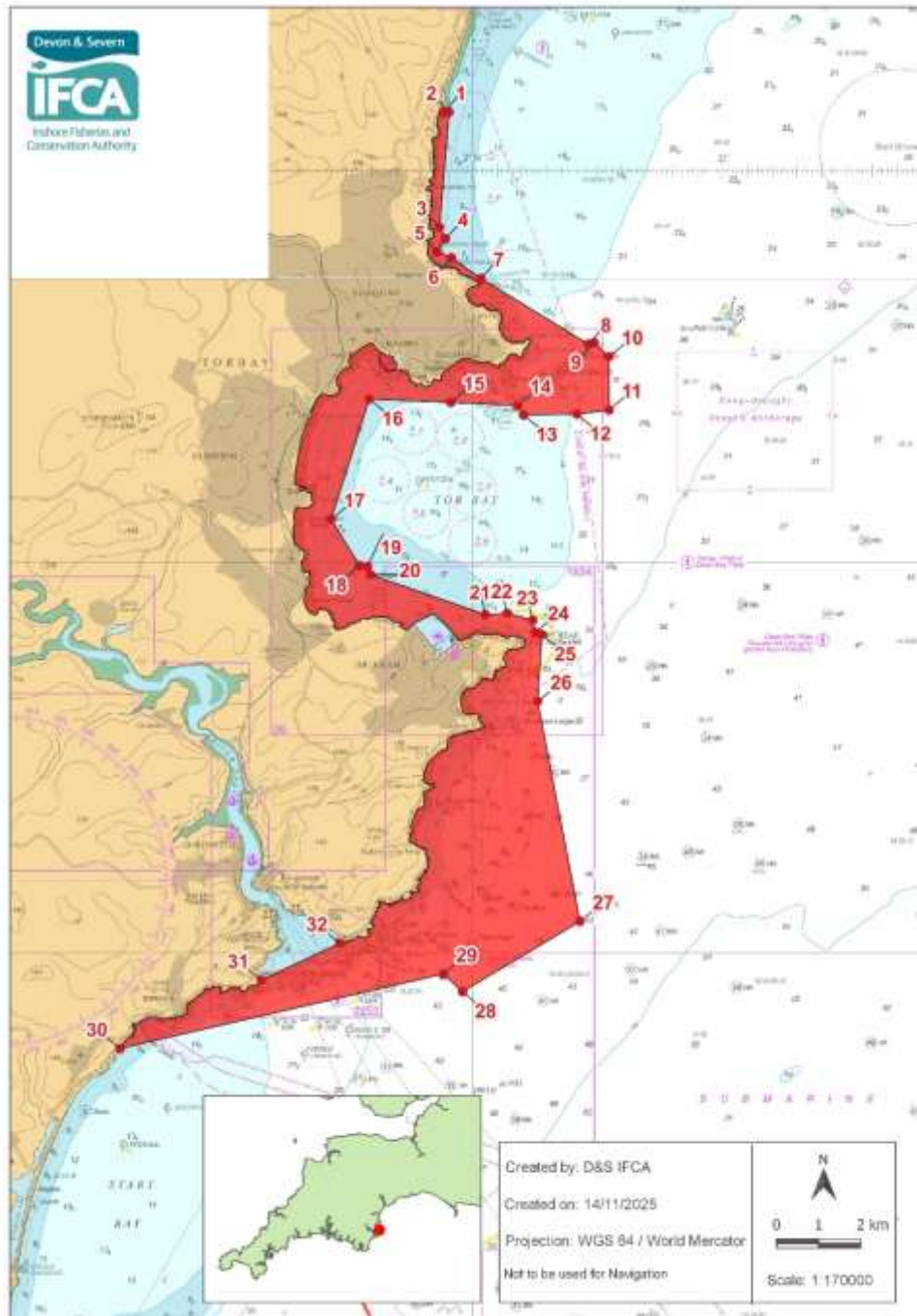
**Annex 2 - No access for mobile fishing vessels operating demersal mobile fishing gear in the area defined by the following points plotted sequentially and joined using straight lines (unless otherwise indicated) from Point 1 to Point 34 then returning to Point 1:**

Point	Latitude	Longitude
1	50° 43.116 N	002° 56.782 W
2	50° 38.004 N	002° 56.782 W
3	50° 38.004 N	002° 58.551 W
4	50° 38.004 N	003° 01.817 W
5	50° 37.622 N	003° 01.901 W
6	50° 37.500 N	003° 01.648 W
7	50° 37.314 N	003° 01.648 W
8	50° 37.262 N	003° 01.980 W
9	50° 37.150 N	003° 02.009 W
10	50° 36.986 N	003° 01.839 W
11	50° 36.848 N	003° 01.908 W
12	50° 36.844 N	003° 02.071 W
13	50° 36.241 N	003° 02.064 W
14	50° 36.186 N	003° 02.223 W
15	50° 35.917 N	003° 02.283 W
16	50° 35.790 N	003° 02.686 W
17	50° 36.568 N	003° 03.393 W
18	50° 36.552 N	003° 03.485 W
19	50° 36.640 N	003° 03.598 W
20	50° 36.743 N	003° 03.562 W
21	50° 37.846 N	003° 04.632 W

*Table continued on next page*

<b>Point</b>	<b>Latitude</b>	<b>Longitude</b>
22	50° 37.873 N	003° 04.782 W
23	50° 38.006 N	003° 04.835 W
24	50° 38.000 N	003° 06.000 W
25	50° 39.303 N	003° 06.000 W
26	50° 39.667 N	003° 06.800 W
27	50° 39.667 N	003° 07.438 W
28	50° 39.908 N	003° 07.433 W
29	50° 39.904 N	003° 06.796 W
30	50° 40.583 N	003° 06.367 W
31	50° 40.625 N	003° 06.000 W
32	50° 40.843 N	003° 06.006 W
33	50° 40.870 N	003° 06.851 W
34	50° 41.182 N	003° 06.836 W
Landward boundary follows Mean High Water to Point 1		

## Annex 3: No Access Area - Tor Bay section of the Lyme Bay and Torbay Special Area of Conservation and the Torbay Marine Conservation Zone



**Legend**

No access in accordance with paragraph 7.3 of the Category One Mobile Fishing Permit Conditions unless the demersal mobile fishing gear is stowed on deck and no fishing is taking place, or demersal trawl gear, or scallop dredges or alternative dredges are being used for fishing within the areas set out on Annex 3(a) and Annex 3(b) in accordance with further gear and time restrictions.

### Explanation of the Access Restriction

Annex 3 shows the restricted access area that is relevant to demersal mobile fishing gear.

There is limited access to different areas depending on the type of demersal mobile fishing gear being used for fishing.

Annex 3(a) below sets out the access areas for fishing with demersal trawl gear and Annex 3(b) below sets out the access area for fishing with scallop gear and alternative dredges.

Where Annex 3(a) and Annex 3(b) do not apply, within the red area there is no access to demersal mobile fishing vessels unless the demersal mobile fishing gear is stowed on deck and no fishing is taking place.

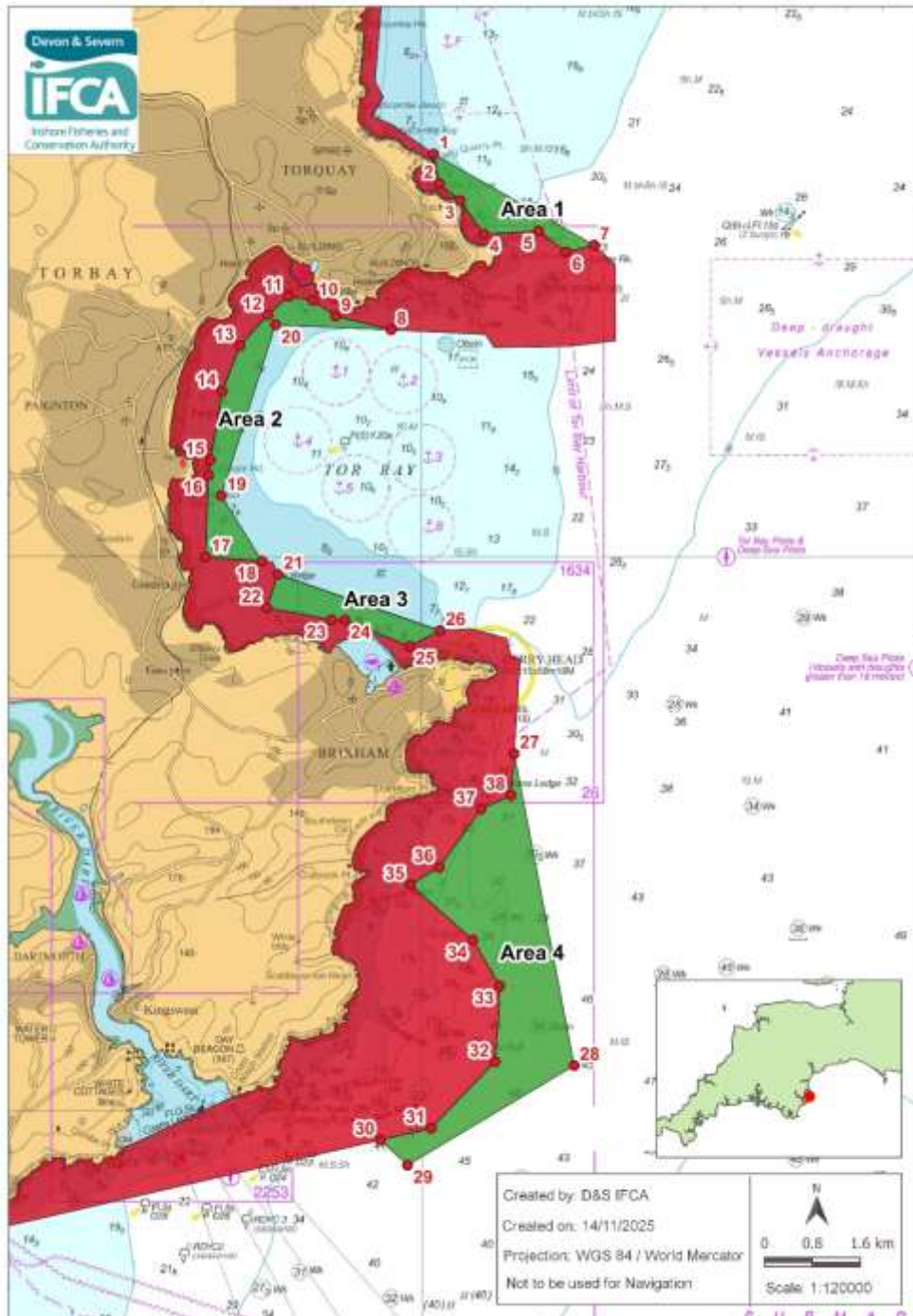
### Annex 3 - Restricted Access for mobile fishing vessels operating demersal mobile fishing gear in the area defined by the following points plotted sequentially and joined using straight lines (unless otherwise indicated) from Point 1 to Point 32 then returning to Point 1:

Point	Latitude	Longitude
1	50° 30.733 N	003° 30.585 W
2	50° 30.733 N	003° 30.467 W
3	50° 29.267 N	003° 30.659 W
4	50° 29.120 N	003° 30.541 W
5	50° 28.950 N	003° 30.700 W
6	50° 28.878 N	003° 30.420 W
7	50° 28.612 N	003° 29.832 W
8	50° 27.775 N	003° 27.685 W
9	50° 27.792 N	003° 27.568 W
10	50° 27.615 N	003° 27.270 W
11	50° 26.933 N	003° 27.267 W
12	50° 26.882 N	003° 27.911 W
13	50° 26.871 N	003° 28.979 W
14	50° 26.989 N	003° 29.100 W
15	50° 27.030 N	003° 30.432 W
16	50° 27.075 N	003° 32.062 W
17	50° 25.538 N	003° 32.827 W
18	50° 24.949 N	003° 32.258 W
19	50° 24.938 N	003° 32.098 W
20	50° 24.831 N	003° 32.035 W

*Table continued on next page*

<b>Point</b>	<b>Latitude</b>	<b>Longitude</b>
21	50° 24.321 N	003° 29.741 W
22	50° 24.338 N	003° 29.307 W
23	50° 24.250 N	003° 28.796 W
24	50° 24.096 N	003° 28.745 W
25	50° 24.067 N	003° 28.613 W
26	50° 23.212 N	003° 28.696 W
27	50° 20.400 N	003° 27.850 W
28	50° 19.500 N	003° 30.200 W
29	50° 19.727 N	003° 30.583 W
30	50° 18.774 N	003° 37.047 W
Landward boundary follows Mean High Water to Point 31		
31	50° 19.648 N	003° 34.220 W
32	50° 20.121 N	003° 32.648 W
Landward boundary follows Mean High Water to Point 1		

## Annex 3(a): Access Areas - Tor Bay section of the Lyme Bay and Torbay Special Area of Conservation and the Torbay Marine Conservation Zone



### Legend



Access in accordance with paragraph 7.3(b) of the Category One Mobile Fishing Permit Conditions where demersal trawl gear is used for fishing within the areas set out in Annex 3(a) and in accordance with the time restrictions relevant to Areas 1, 2, and 3, in paragraph 11.3, and the engine power restriction relevant to Area 4 in paragraph 3.1 of the Category One Mobile Fishing Permit Conditions.

### **Explanation of the Access Restriction**

Annex 3(a) shows the green access areas where demersal trawl gear can be used for fishing.

Areas 1, 2, 3 are accessible between 1<sup>st</sup> April and 30<sup>th</sup> June inclusive.

Demersal trawl gear can be operated in Area 4 all year, but only if the vessel's engines are rated at 100 Kilowatts or less.

If not fishing in the green access area, all demersal mobile fishing gear must be stowed on deck.

Within the red area there is no access to demersal mobile fishing vessels unless the demersal mobile fishing gear is stowed on deck and no fishing is taking place.

### **Annex 3(a) - Access for mobile fishing vessels operating demersal trawl gear in the four areas defined as follows:**

#### **Area 1**

**Annex 3(a) Area 1 - Access for mobile fishing vessels operating demersal trawl gear in the area defined by the following points plotted sequentially and joined using straight lines (unless otherwise indicated) from Point 1 to Point 7 then returning to Point 1:**

<b>Point</b>	<b>Latitude</b>	<b>Longitude</b>
1	50° 28.612 N	003° 29.832 W
2	50° 28.347 N	003° 29.755 W
3	50° 28.194 N	003° 29.459 W
4	50° 27.891 N	003° 29.125 W
5	50° 27.920 N	003° 28.353 W
6	50° 27.731 N	003° 27.963 W
7	50° 27.792 N	003° 27.568 W

#### **Area 2**

**Annex 3(a) Area 2 - Access for mobile fishing vessels operating demersal trawl gear in the area defined by the following points plotted sequentially and joined using straight lines (unless otherwise indicated) from Point 8 to Point 20 then returning to Point 8:**

<b>Point</b>	<b>Latitude</b>	<b>Longitude</b>
8	50° 27.030 N	003° 30.432 W
9	50° 27.154 N	003° 31.214 W

*Table continued on next page*

<b>Point</b>	<b>Latitude</b>	<b>Longitude</b>
10	50° 27.293 N	003° 31.533 W
11	50° 27.331 N	003° 31.878 W
12	50° 27.164 N	003° 32.169 W
13	50° 26.886 N	003° 32.564 W
14	50° 26.476 N	003° 32.814 W
15	50° 25.858 N	003° 32.980 W
16	50° 25.721 N	003° 33.007 W
17	50° 24.984 N	003° 33.050 W
18	50° 24.946 N	003° 32.250 W
19	50° 25.537 N	003° 32.827 W
20	50° 27.075 N	003° 32.062 W

### **Area 3**

**Annex 3(a) Area 3 - Access for mobile fishing vessels operating demersal trawl gear in the area defined by the following points plotted sequentially and joined using straight lines (unless otherwise indicated) from Point 21 to Point 26 then returning to Point 21:**

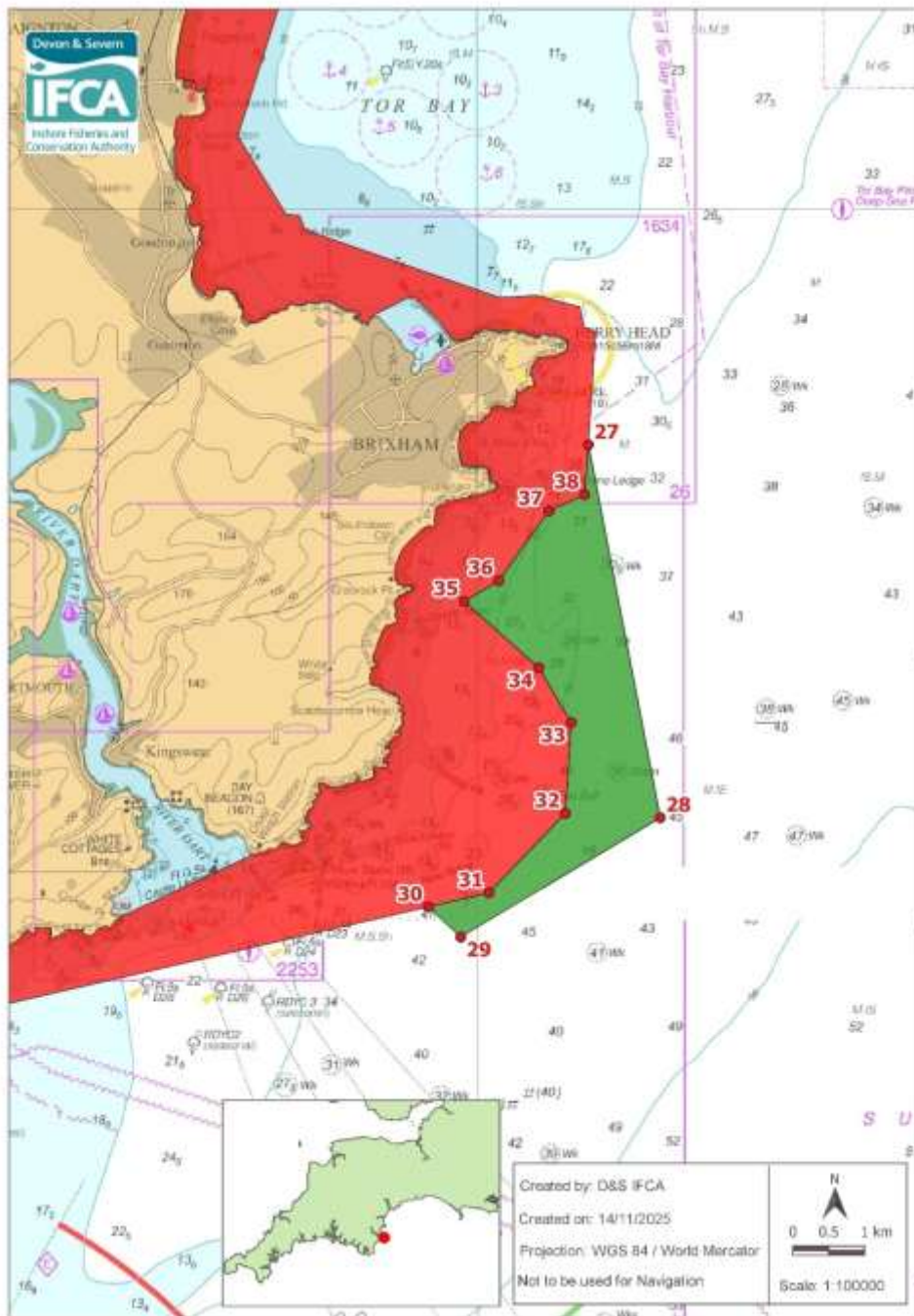
<b>Point</b>	<b>Latitude</b>	<b>Longitude</b>
21	50° 24.828 N	003° 32.027 W
22	50° 24.525 N	003° 32.183 W
23	50° 24.418 N	003° 31.268 W
24	50° 24.416 N	003° 31.082 W
25	50° 24.181 N	003° 30.171 W
26	50° 24.321 N	003° 29.741 W

## Area 4

**Annex 3(a) Area 4 - Access for mobile fishing vessels operating demersal trawl gear in the area defined by the following points plotted sequentially and joined using straight lines (unless otherwise indicated) from Point 27 to Point 38 then returning to Point 27:**

Point	Latitude	Longitude
27	50° 23.212 N	003° 28.696 W
28	50° 20.400 N	003° 27.850 W
29	50° 19.500 N	003° 30.200 W
30	50° 19.727 N	003° 30.583 W
31	50° 19.833 N	003° 29.867 W
32	50° 20.433 N	003° 28.967 W
33	50° 21.118 N	003° 28.898 W
34	50° 21.531 N	003° 29.279 W
35	50° 22.031 N	003° 30.160 W
36	50° 22.187 N	003° 29.752 W
37	50° 22.713 N	003° 29.163 W
38	50° 22.836 N	003° 28.740 W

## Annex 3(b): Access Area - Tor Bay section of the Lyme Bay and Torbay Special Area of Conservation and the Torbay Marine Conservation Zone



### Legend

- Access in accordance with paragraph 7.3(c) of the Category One Mobile Fishing Permit Conditions where scallop dredges or alternative dredges are used for fishing within the area set out in Annex 3(b) and in accordance with the engine power restriction in paragraph 3.1 of the Category One Mobile Fishing Permit Conditions.

### **Explanation of the Access Restriction**

Annex 3(b) shows the green access Area 4 where mobile fishing vessels operating scallop dredges or alternative dredges can be used for fishing.

Area 4 is only accessible if the vessel's engines are rated at 100 Kilowatts or less.

When scallop dredging in Area 4, a maximum of two tow bars can be used, each tow bar must not exceed 2.6 metres in length, and no more than three scallop dredges can be attached to each tow bar.

If not fishing in the green access area, all demersal mobile fishing gear must be stowed on deck.

Within the red area there is no access to demersal mobile fishing vessels unless the demersal mobile fishing gear is stowed on deck and no fishing is taking place.

**Annex 3(b) - Access for mobile fishing vessels operating scallop dredges or alternative dredges in the area defined by the following points plotted sequentially and joined using straight lines (unless otherwise indicated) from Point 27 to Point 38 then returning to Point 27:**

<b>Point</b>	<b>Latitude</b>	<b>Longitude</b>
27	50° 23.212 N	003° 28.696 W
28	50° 20.400 N	003° 27.850 W
29	50° 19.500 N	003° 30.200 W
30	50° 19.727 N	003° 30.583 W
31	50° 19.833 N	003° 29.867 W
32	50° 20.433 N	003° 28.967 W
33	50° 21.118 N	003° 28.898 W
34	50° 21.531 N	003° 29.279 W
35	50° 22.031 N	003° 30.160 W
36	50° 22.187 N	003° 29.752 W
37	50° 22.713 N	003° 29.163 W
38	50° 22.836 N	003° 28.740 W

# Annex 4: No Access Area - Plymouth Sound and Estuaries Special Area of Conservation (including the Rivers Plym, Tamar, Tavy and Yealm)



### Legend

- No access in accordance with paragraph 7.4 of the Category One Mobile Fishing Permit Conditions unless the demersal mobile fishing gear is stowed on deck and no fishing is taking place, or an encircling net is being used for fishing within the area set out on Annex 4(a).

### **Explanation of the Access Restriction**

Annex 4 shows the restricted access area that is relevant to demersal mobile fishing gear.

There is limited access to different areas depending on the type of demersal mobile fishing gear being used for fishing.

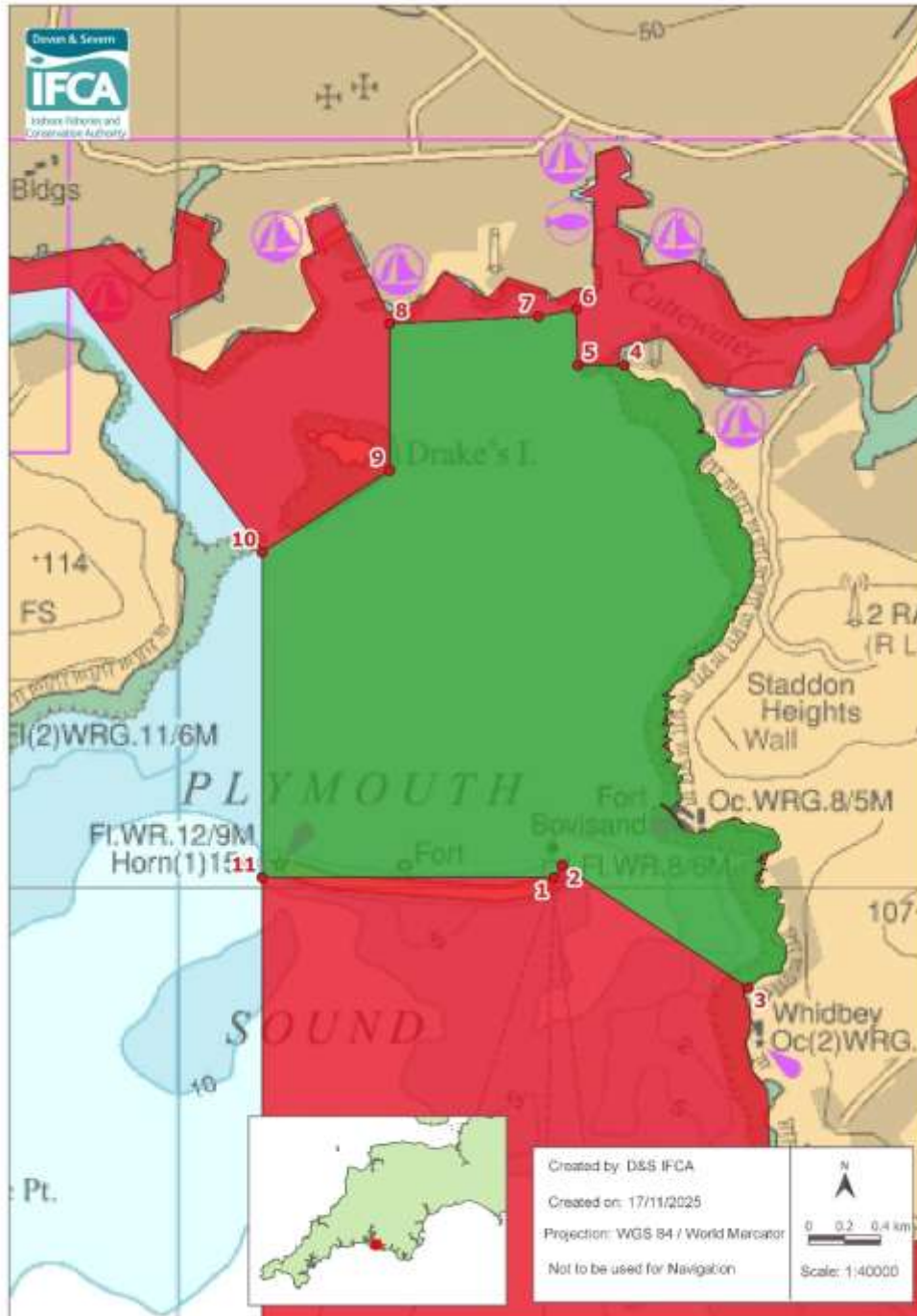
Annex 4(a) below sets out the extent of the limited access area where an encircling net can be used for fishing.

Where Annex 4(a) does not apply, within the red area there is no access to demersal mobile fishing vessels unless the demersal mobile fishing gear is stowed on deck and no fishing is taking place.

**Annex 4 - Restricted access for mobile fishing vessels operating demersal mobile fishing gear within the D&S IFCA's District landward of a line defined by the following points plotted sequentially and joined using straight lines (unless otherwise indicated) from Point 1 to Point 2:**

<b>Point</b>	<b>Latitude</b>	<b>Longitude</b>
1	50° 18.484 N	004° 09.600 W
2	50° 18.192 N	004° 04.458 W

**Annex 4(a): Access Area - Plymouth Sound and Estuaries Special Area of Conservation (including the Rivers Plym, Tamar, Tavy and Yealm)**



**Legend**

Access in accordance with paragraph 7.4(b) of the Category One Mobile Fishing Permit Conditions where fishing is conducted with an encircling net within the area set out in Annex 4(a).

### **Explanation of the Access Restriction**

Annex 4 (a) shows the green access area where encircling nets can be used for fishing.

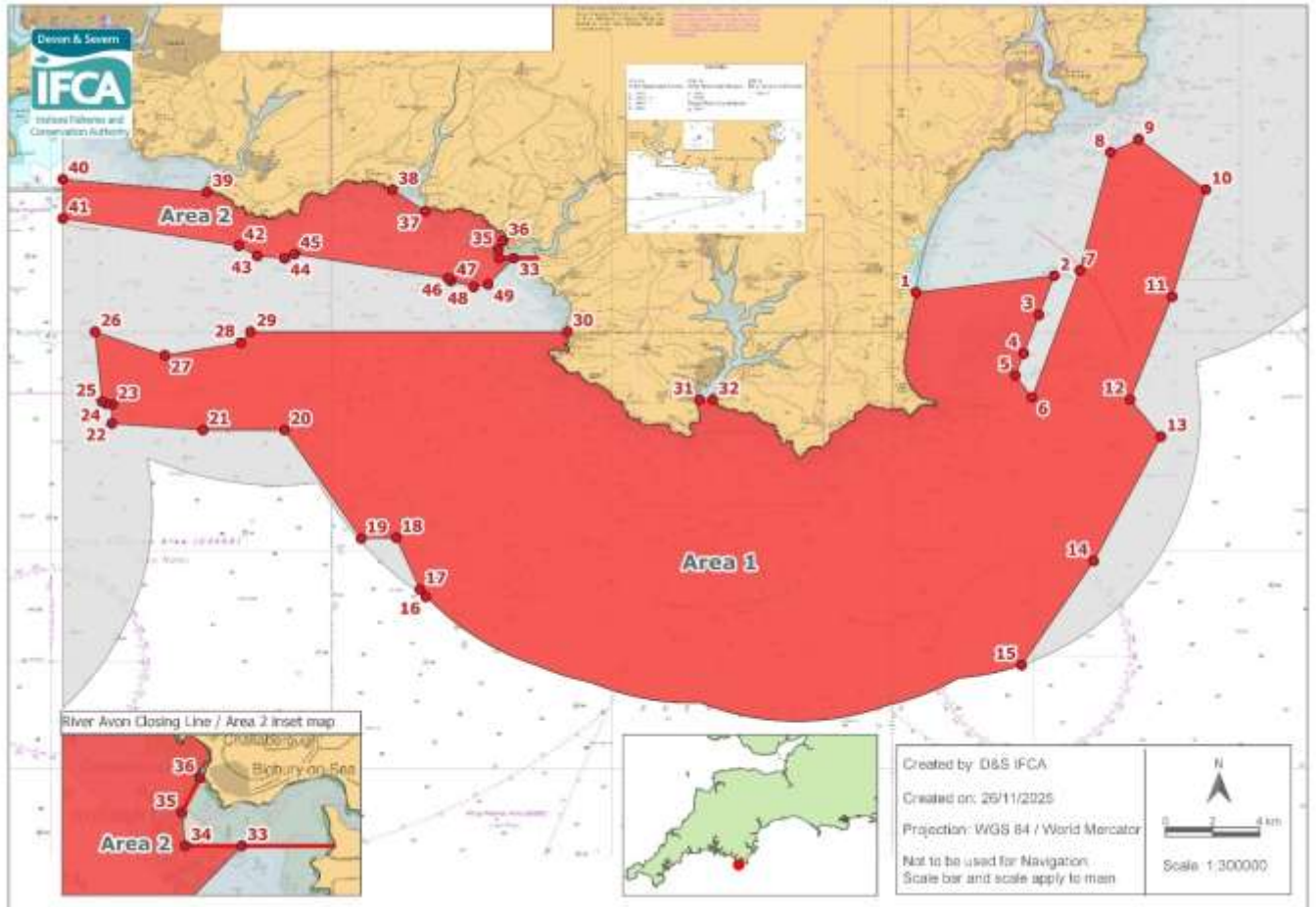
If not fishing with encircling nets in the green access area, all demersal mobile fishing gear must be stowed on deck.

Within the red area there is no access to demersal mobile fishing vessels unless the demersal mobile fishing gear is stowed on deck and no fishing is taking place.

**Annex 4 (a) - Access for mobile fishing vessels operating an encircling net in the area defined by the following points plotted sequentially and joined using straight lines (unless otherwise indicated) from Point 1 to Point 11, then returning to Point 1:**

<b>Point</b>	<b>Latitude</b>	<b>Longitude</b>
1	50° 20.023 N	004° 08.231 W
2	50° 20.061 N	004° 08.192 W
3	50° 19.692 N	004° 07.319 W
Landward boundary follows Mean High Water to Point 4		
4	50° 21.562 N	004° 07.902 W
5	50° 21.562 N	004° 08.120 W
6	50° 21.730 N	004° 08.127 W
7	50° 21.708 N	004° 08.304 W
8	50° 21.687 N	004° 09.002 W
9	50° 21.246 N	004° 09.002 W
10	50° 21.000 N	004° 09.600 W
11	50° 20.023 N	004° 09.600 W

## Annex 5: No Access Area - Part of the Start Point to Plymouth Sound and Eddystone Special Area of Conservation, and part of the Skerries Bank and Surrounds Marine Conservation Zone



### Legend

- No access in accordance with paragraph 7.5 of the Category One Mobile Fishing Permit Conditions unless the demersal mobile fishing gear is stowed on deck and no fishing is taking place, or the demersal mobile fishing gear is being used for fishing within the areas set out on Annex 5(a) in accordance with the time restrictions.

### Explanation of the Access Restriction

Annex 5 shows the restricted access area that is relevant to demersal mobile fishing gear.

There is limited access to different areas for demersal mobile fishing vessels being used for fishing.

Annex 5(a) below sets out the access areas for fishing with demersal mobile fishing gear.

Where Annex 5(a) does not apply, within the red area there is no access to demersal mobile fishing vessels unless the demersal mobile fishing gear is stowed on deck and no fishing is taking place.

## Area 1 - South of Salcombe

**Annex 5 Area 1 - Restricted Access for mobile fishing vessels operating demersal mobile fishing gear in the area defined by the following points plotted sequentially and joined using straight lines (unless otherwise indicated) from Point 1 to Point 32 then returning to Point 1:**

Point	Latitude	Longitude
1	50° 15.897 N	003° 39.141 W
2	50° 16.278 N	003° 34.212 W
3	50° 15.384 N	003° 34.758 W
4	50° 14.502 N	003° 35.298 W
5	50° 13.998 N	003° 35.598 W
6	50° 13.500 N	003° 35.000 W
7	50° 16.400 N	003° 33.300 W
8	50° 19.100 N	003° 32.200 W
9	50° 19.400 N	003° 31.200 W
10	50° 18.250 N	003° 28.800 W
11	50° 15.800 N	003° 30.000 W
12	50° 13.450 N	003° 31.500 W
13	50° 12.600 N	003° 30.400 W
14	50° 09.750 N	003° 32.800 W
15	50° 07.368 N	003° 35.373 W
Then follow the Six Nautical Mile Limit to Point 16		
16	50° 08.930 N	003° 56.640 W
17	50° 09.100 N	003° 56.850 W
18	50° 10.284 N	003° 57.696 W
19	50° 10.267 N	003° 58.950 W
20	50° 12.750 N	004° 01.683 W
21	50° 12.750 N	004° 04.600 W

*Table continued on next page*

<b>Point</b>	<b>Latitude</b>	<b>Longitude</b>
22	50° 12.900 N	004° 07.850 W
23	50° 13.334 N	004° 07.836 W
24	50° 13.352 N	004° 08.043 W
25	50° 13.400 N	004° 08.200 W
26	50° 15.000 N	004° 08.450 W
27	50° 14.460 N	004° 05.958 W
28	50° 14.748 N	004° 03.251 W
29	50° 15.000 N	004° 02.900 W
30	50° 15.000 N	003° 51.590 W
Landward boundary follows Mean High Water to Point 31		
31	50° 13.444 N	003° 46.871 W
32	50° 13.444 N	003° 46.402 W
Landward boundary follows Mean High Water to Point 1		

## **Area 2 - Bigbury Bay**

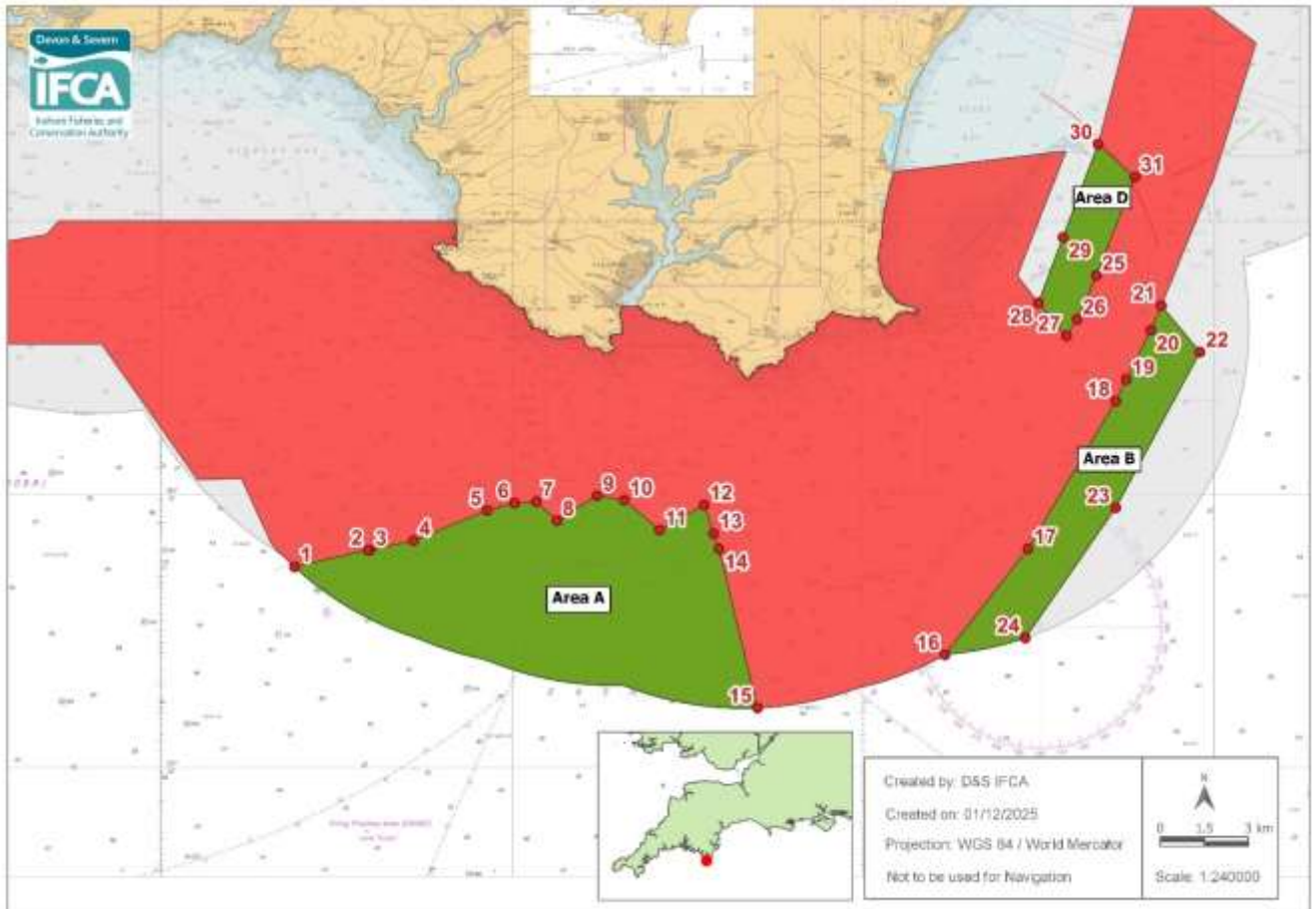
**Annex 5 Area 2 - Restricted Access for mobile fishing vessels operating demersal mobile fishing gear in the area defined by the following points plotted sequentially and joined using straight lines (unless otherwise indicated) from Point 33 to Point 49 then returning to Point 33:**

<b>Point</b>	<b>Latitude</b>	<b>Longitude</b>
33	50° 16.684 N	003° 53.508 W
34	50° 16.684 N	003° 54.018 W
35	50° 16.876 N	003° 54.049 W
36	50° 17.077 N	003° 53.884 W
Landward boundary follows Mean High Water to Point 37		
37	50° 17.750 N	003° 56.657 W
38	50° 18.243 N	003° 57.834 W
Landward boundary follows Mean High Water to Point 39		
39	50° 18.191 N	004° 04.460 W
40	50° 18.484 N	004° 09.600 W

*Table continued on next page*

<b>Point</b>	<b>Latitude</b>	<b>Longitude</b>
41	50° 17.588 N	004° 09.600 W
42	50° 16.967 N	004° 03.323 W
43	50° 16.734 N	004° 02.658 W
44	50° 16.678 N	004° 01.685 W
45	50° 16.775 N	004° 01.328 W
46	50° 16.222 N	003° 55.848 W
47	50° 16.158 N	003° 55.749 W
48	50° 16.026 N	003° 54.930 W
49	50° 16.083 N	003° 54.417 W

## Annex 5(a): Access Areas - Part of Start Point to Plymouth Sound and Eddystone Special Area of Conservation, and part of the Skerries Bank and Surrounds Marine Conservation Zone



### Legend

- Access in accordance with paragraph 7.5 (b, c, and d) of the Category One Mobile Fishing Permit Conditions where demersal mobile fishing gear is used for fishing within the areas set out in Annex 5(a) and in accordance with the time restrictions in paragraph 11.4 (table 1) of the Category One Mobile Fishing Permit Conditions.

### Explanation of the Access Restriction

Annex 5(a) shows the green access areas where demersal mobile fishing gear can be used for fishing.

Areas A, B, and D are accessible to demersal mobile fishing gear at certain times of the year as follows:

- Area A: 1<sup>st</sup> January to 31<sup>st</sup> May (inclusive)
- Area B: 1<sup>st</sup> January to 31<sup>st</sup> March (inclusive)
- Area D: 1<sup>st</sup> February to 31<sup>st</sup> August (inclusive)

If not fishing in the green access area, all demersal mobile fishing gear must be stowed on deck.

Within the red area there is no access to demersal mobile fishing vessels unless the demersal mobile fishing gear is stowed on deck and no fishing is taking place.

### Area A

**Annex 5(a) Area A - Access, for the period set out in table 1 below, for mobile fishing vessels operating demersal mobile fishing gear in the area defined by the following points plotted sequentially and joined using straight lines (unless otherwise indicated) from Point 1 to Point 15 then returning to Point 1:**

Point	Latitude	Longitude
1	50° 08.669 N	003° 56.186 W
2	50° 08.977 N	003° 54.092 W
3	50° 08.973 N	003° 54.046 W
4	50° 09.150 N	003° 52.800 W
5	50° 09.702 N	003° 50.700 W
6	50° 09.835 N	003° 49.915 W
7	50° 09.863 N	003° 49.300 W
8	50° 09.517 N	003° 48.711 W
9	50° 09.972 N	003° 47.568 W
10	50° 09.892 N	003° 46.798 W
11	50° 09.343 N	003° 45.795 W
12	50° 09.800 N	003° 44.525 W
13	50° 09.279 N	003° 44.248 W
14	50° 09.000 N	003° 44.100 W
15	50° 06.084 N	003° 43.000 W
Then follow the six nautical mile limit to Point 1		

*Table continued on next page*

## Area B

**Annex 5(a) Area B - Access, for the period set out in table 1 below, for mobile fishing vessels operating demersal mobile fishing gear in the area defined by the following points plotted sequentially and joined using straight lines (unless otherwise indicated) from Point 16 to Point 24 then returning to Point 16:**

<b>Point</b>	<b>Latitude</b>	<b>Longitude</b>
16	50° 07.057 N	003° 37.660 W
17	50° 09.000 N	003° 35.300 W
18	50° 11.700 N	003° 32.800 W
19	50° 12.100 N	003° 32.500 W
20	50° 13.000 N	003° 31.800 W
21	50° 13.450 N	003° 31.500 W
22	50° 12.600 N	003° 30.400 W
23	50° 09.750 N	003° 32.800 W
24	50° 07.368 N	003° 35.373 W
Then follow the six nautical mile limit to Point 16		

## Area D

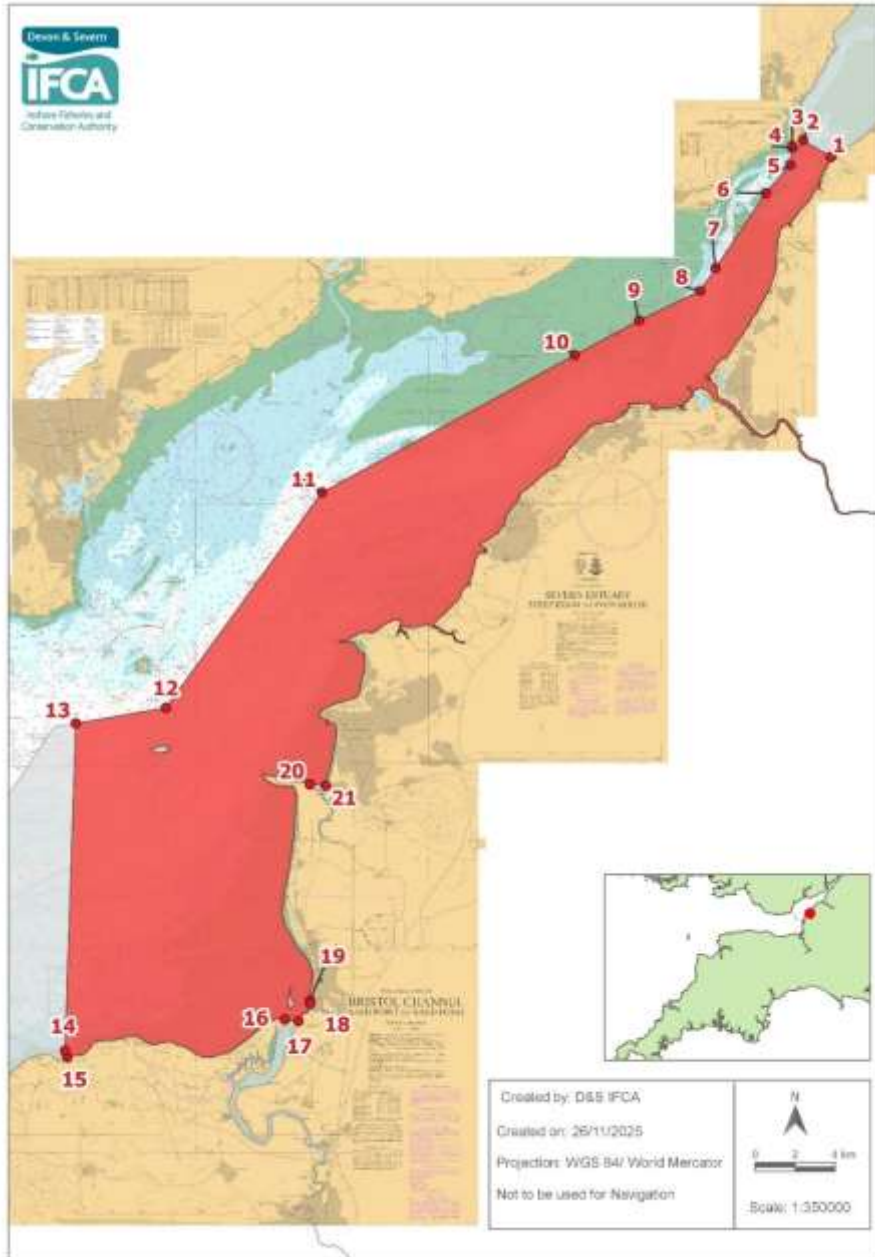
**Annex 5(a) Area D - Access, for the period set out in table 1 below, for mobile fishing vessels operating demersal mobile fishing gear in the area defined by the following points plotted sequentially and joined using straight lines (unless otherwise indicated) from Point 25 to Point 31 then returning to Point 25:**

<b>Point</b>	<b>Latitude</b>	<b>Longitude</b>
25	50° 14.000 N	003° 33.350 W
26	50° 13.200 N	003° 33.900 W
27	50° 12.900 N	003° 34.200 W
28	50° 13.500 N	003° 35.000 W
29	50° 14.700 N	003° 34.300 W
30	50° 16.400 N	003° 33.300 W
31	50° 15.800 N	003° 32.250 W

### Permit Condition 11.4 Table 1

<b>Annex</b>	<b>Sub Area of Annex 5a</b>	<b>Annual Access dates</b>
5a	Area A	1 <sup>st</sup> Jan to 31 <sup>st</sup> May inclusive
5a	Area B	1 <sup>st</sup> Jan to 31 <sup>st</sup> March inclusive
5a	Area D	1 <sup>st</sup> Feb to 31 <sup>st</sup> Aug inclusive

## Annex 6: No Access Area - Severn Estuary Special Area of Conservation



### Legend

- No access in accordance with paragraph 7.6 of the Category One Mobile Fishing Permit Conditions unless the demersal mobile fishing gear is stowed on deck and no fishing is taking place.

### Explanation of the Access Restriction

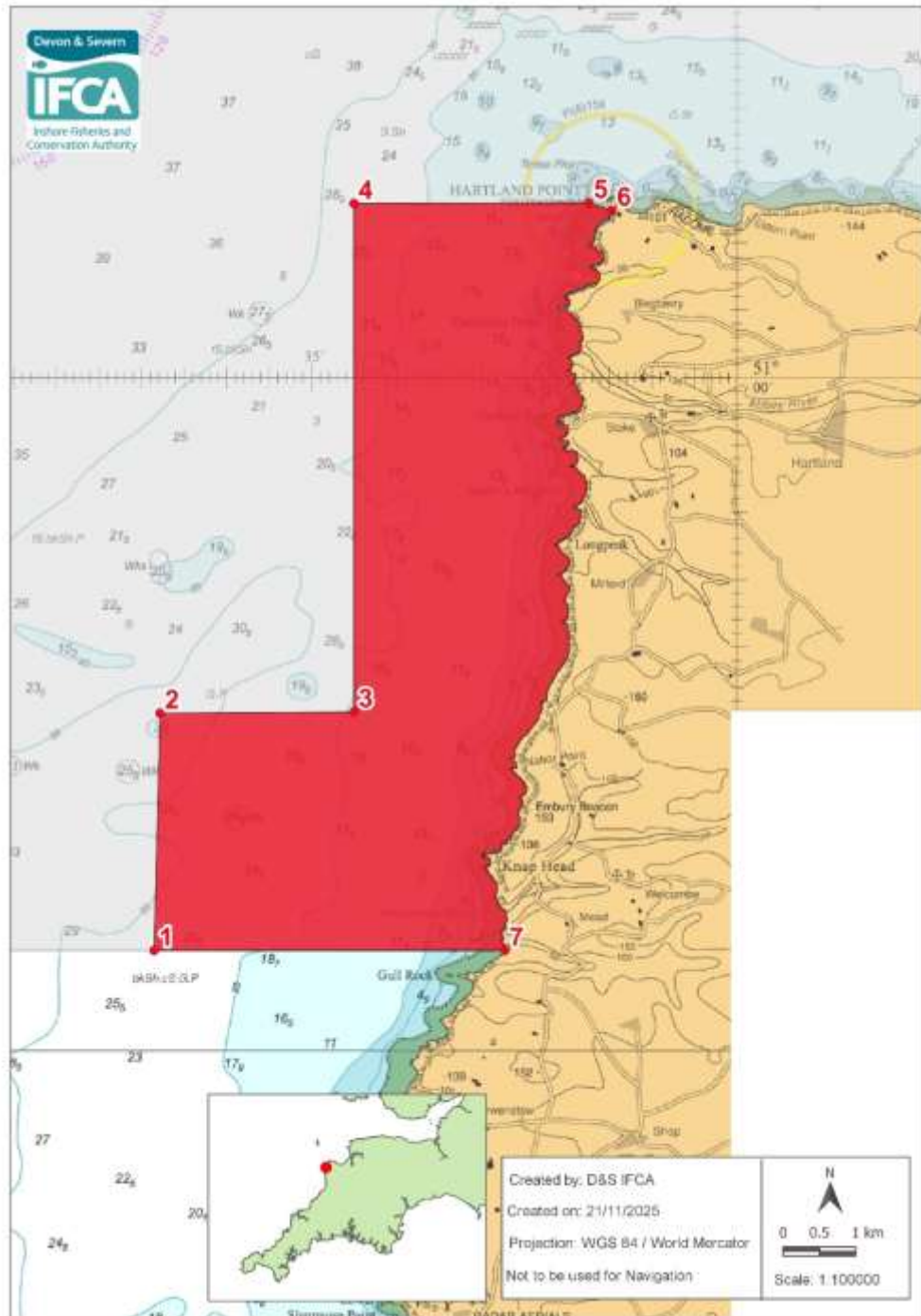
Annex 6 shows the no access area that is relevant to demersal mobile fishing gear.

Within the red area there is no access to demersal mobile fishing vessels unless the demersal mobile fishing gear is stowed on deck and no fishing is taking place.


**Annex 6 - No access for mobile fishing vessels operating demersal mobile fishing gear in the area defined by the following points plotted sequentially and joined using straight lines (unless otherwise indicated) from Point 1 to Point 21 then returning to Point 1:**

<b>Point</b>	<b>Latitude</b>	<b>Longitude</b>
1	51° 36.310 N	002° 37.696 W
2	51° 36.769 N	002° 38.898 W
Landward boundary follows Mean High Water to Point 3		
3	51° 36.608 N	002° 39.358 W
4	51° 36.568 N	002° 39.364 W
5	51° 36.102 N	002° 39.436 W
6	51° 35.342 N	002° 40.494 W
7	51° 33.335 N	002° 42.655 W
8	51° 32.722 N	002° 43.314 W
9	51° 31.927 N	002° 45.944 W
10	51° 30.997 N	002° 48.710 W
11	51° 27.306 N	002° 59.584 W
12	51° 21.512 N	003° 06.293 W
13	51° 21.092 N	003° 10.173 W
14	51° 12.256 N	003° 10.641 W
15	51° 12.072 N	003° 10.532 W
Landward boundary follows Mean High Water to Point 16		
16	51° 13.106 N	003° 01.177 W
17	51° 13.056 N	003° 00.595 W
Landward boundary follows Mean High Water to Point 18		
18	51° 13.528 N	003° 00.091 W
19	51° 13.618 N	003° 00.091 W
Landward boundary follows Mean High Water to Point 20		
20	51° 19.450 N	003° 00.108 W
21	51° 19.417 N	002° 59.418 W
Landward boundary follows Mean High Water to Point 1		

## Annex 7: No Access Area - Hartland Point to Tintagel Marine Conservation Zone



### Legend

-  No access in accordance with paragraph 7.7 of the Category One Mobile Fishing Permit Conditions unless the scallop dredges or alternative dredges are stowed on deck and no fishing is taking place.

**Explanation of the Access Restriction**

Annex 7 shows the restricted access area that is relevant to demersal mobile fishing gear.

There is restricted access depending on the type of demersal mobile fishing gear being used for fishing.

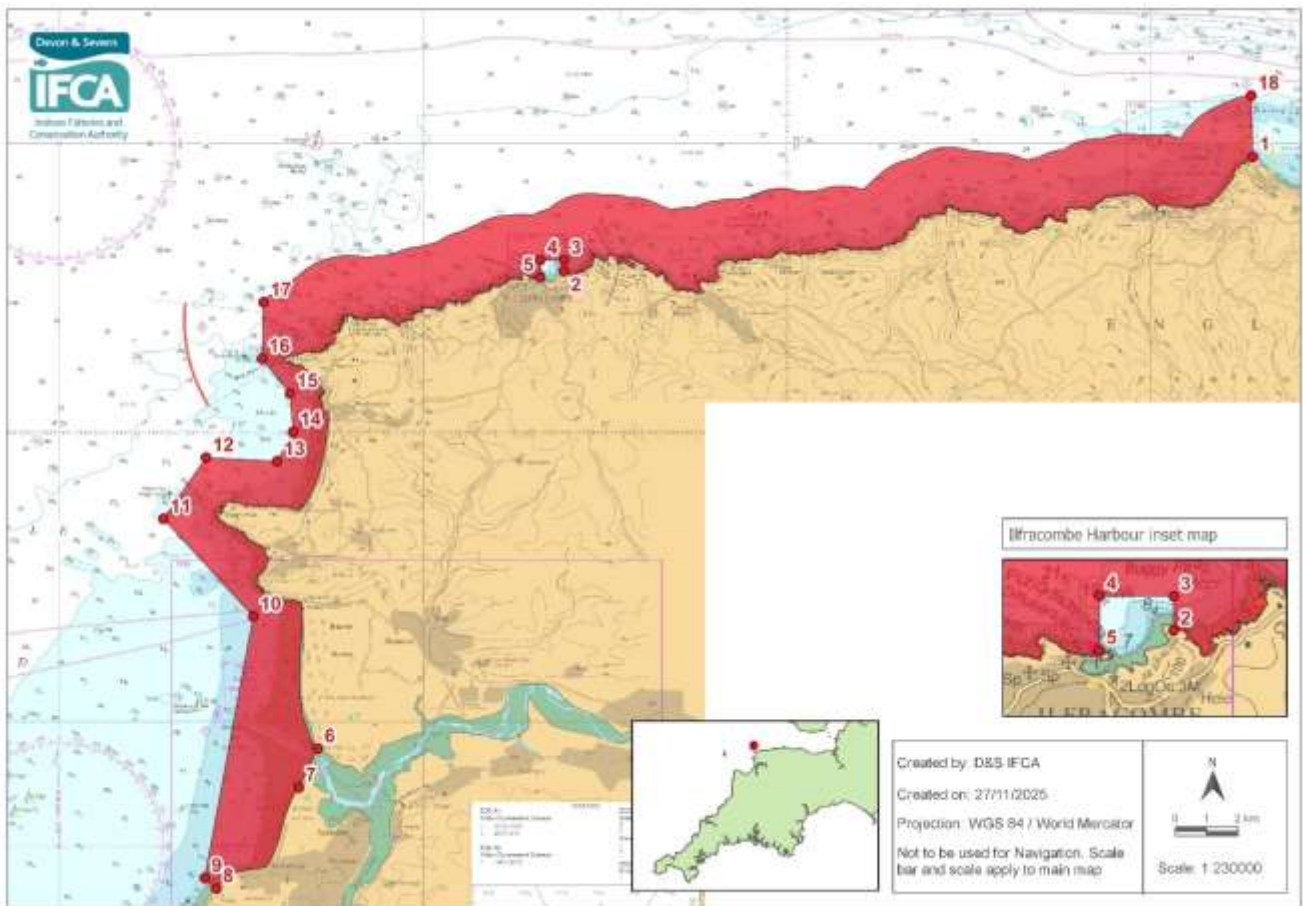
Within this area there is no access to demersal mobile fishing vessels with scallop dredges and alternative dredges aboard, unless the scallop dredges or the alternative dredges are stowed on deck and no fishing is taking place.

The access restriction does not apply to demersal mobile fishing vessels with demersal trawl gear being used for fishing.


**Annex 7 - No access for mobile fishing vessels operating scallop dredges or alternative dredges in the area defined by the following points plotted sequentially and joined using straight lines (unless otherwise indicated) from Point 1 to Point 7 then returning to Point 1:**

<b>Point</b>	<b>Latitude</b>	<b>Longitude</b>
1	50° 55.738 N	004° 36.852 W
2	50° 57.500 N	004° 36.781 W
3	50° 57.510 N	004° 34.503 W
4	51° 01.283 N	004° 34.503 W
5	51° 01.289 N	004° 31.741 W
6	51° 01.232 N	004° 31.468 W
Landward boundary follows Mean High Water to Point 7		
7	50° 55.738 N	004° 32.729 W

## Annex 8: No Access Area - Bideford to Foreland Point Marine Conservation Zone



### Legend

-  No access in accordance with paragraph 7.8 of the Category One Mobile Fishing Permit Conditions unless the demersal mobile fishing gear is stowed on deck and no fishing is taking place, or the demersal mobile fishing gear is being used for fishing within the area set out on Annex 8a.

### Explanation of the Access Restriction

Annex 8 shows the restricted access area that is relevant to demersal mobile fishing gear.

There is limited access to different areas for demersal mobile fishing gear being used for fishing.

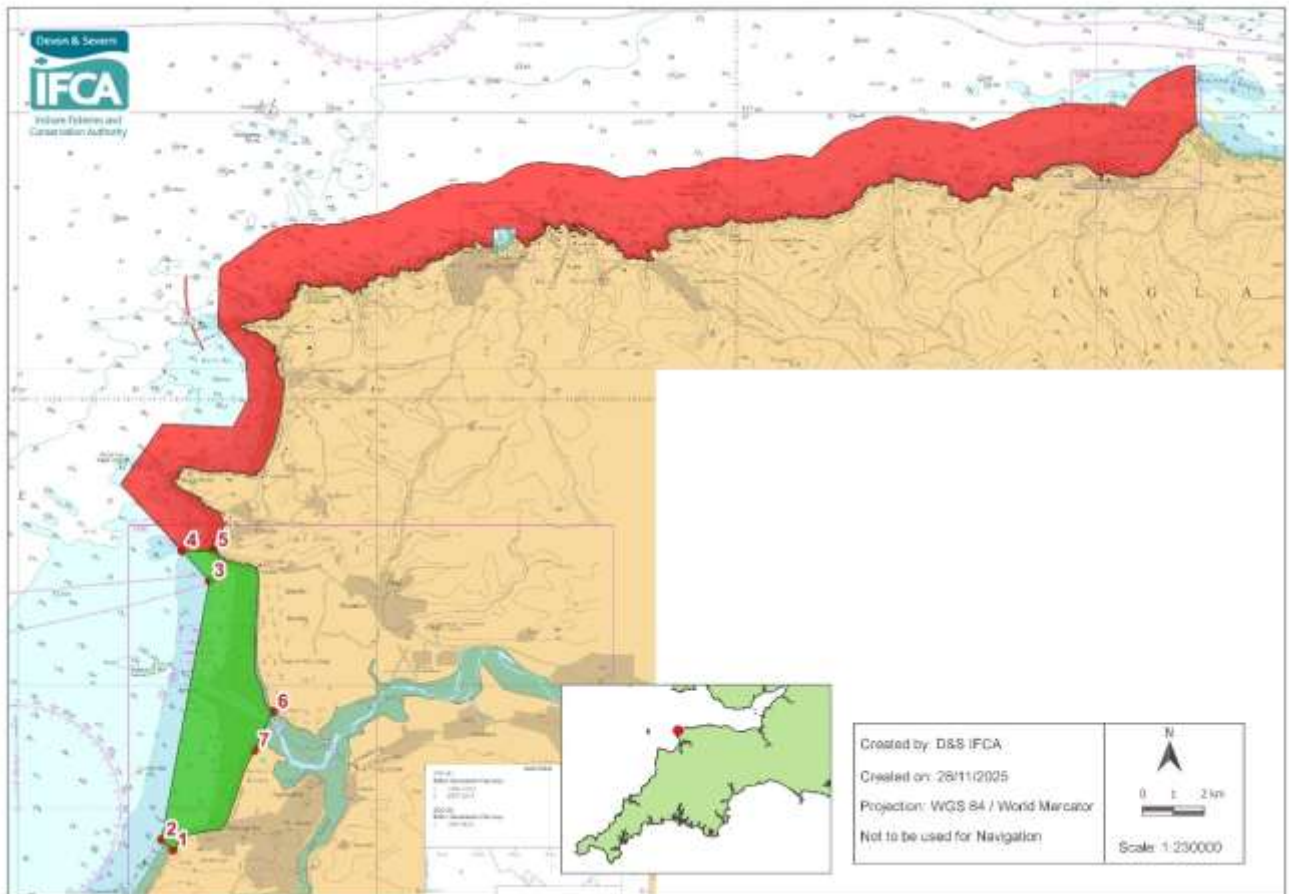
Annex 8(a) below sets out the access area for fishing with demersal mobile fishing gear.

Where Annex 8(a) does not apply, within the red area there is no access to demersal mobile fishing vessels unless the demersal mobile fishing gear is stowed on deck and no fishing is taking place.


**Annex 8 - Restricted access for mobile fishing vessels operating demersal mobile fishing gear in the area defined by the following points plotted sequentially and joined using straight lines (unless otherwise indicated) from Point 1 to Point 18 then returning to Point 1:**

<b>Point</b>	<b>Latitude</b>	<b>Longitude</b>
1	51° 14.764 N	003° 47.204 W
Landward boundary follows Mean High Water to Point 2		
2	51° 12.792 N	004° 06.130 W
3	51° 12.980 N	004° 06.126 W
4	51° 12.983 N	004° 06.778 W
5	51° 12.683 N	004° 06.778 W
Landward boundary follows Mean High Water to Point 6		
6	51° 04.524 N	004° 12.897 W
7	51° 03.849 N	004° 13.416 W
Landward boundary follows Mean High Water to Point 8		
8	51° 02.098 N	004° 15.685 W
9	51° 02.281 N	004° 16.001 W
10	51° 06.816 N	004° 14.667 W
11	51° 08.505 N	004° 17.135 W
12	51° 09.563 N	004° 15.967 W
13	51° 09.499 N	004° 14.015 W
14	51° 10.011 N	004° 13.570 W
15	51° 10.676 N	004° 13.655 W
16	51° 11.274 N	004° 14.426 W
17	51° 12.250 N	004° 14.385 W
Seaward boundary follows a one nautical mile line from Mean High Water to Point 18		
18	51° 15.825 N	003° 47.244 W

## Annex 8(a): Access Area - Bideford to Foreland Point Marine Conservation Zone



### Legend

-  Access in accordance with paragraph 7.8(b) of the Category One Mobile Fishing Permit Conditions where demersal mobile fishing gear is used for fishing within the area set out in Annex 8(a).

### Explanation of the Access Restriction

Annex 8(a) shows the green access area where demersal mobile fishing gear can be used for fishing.

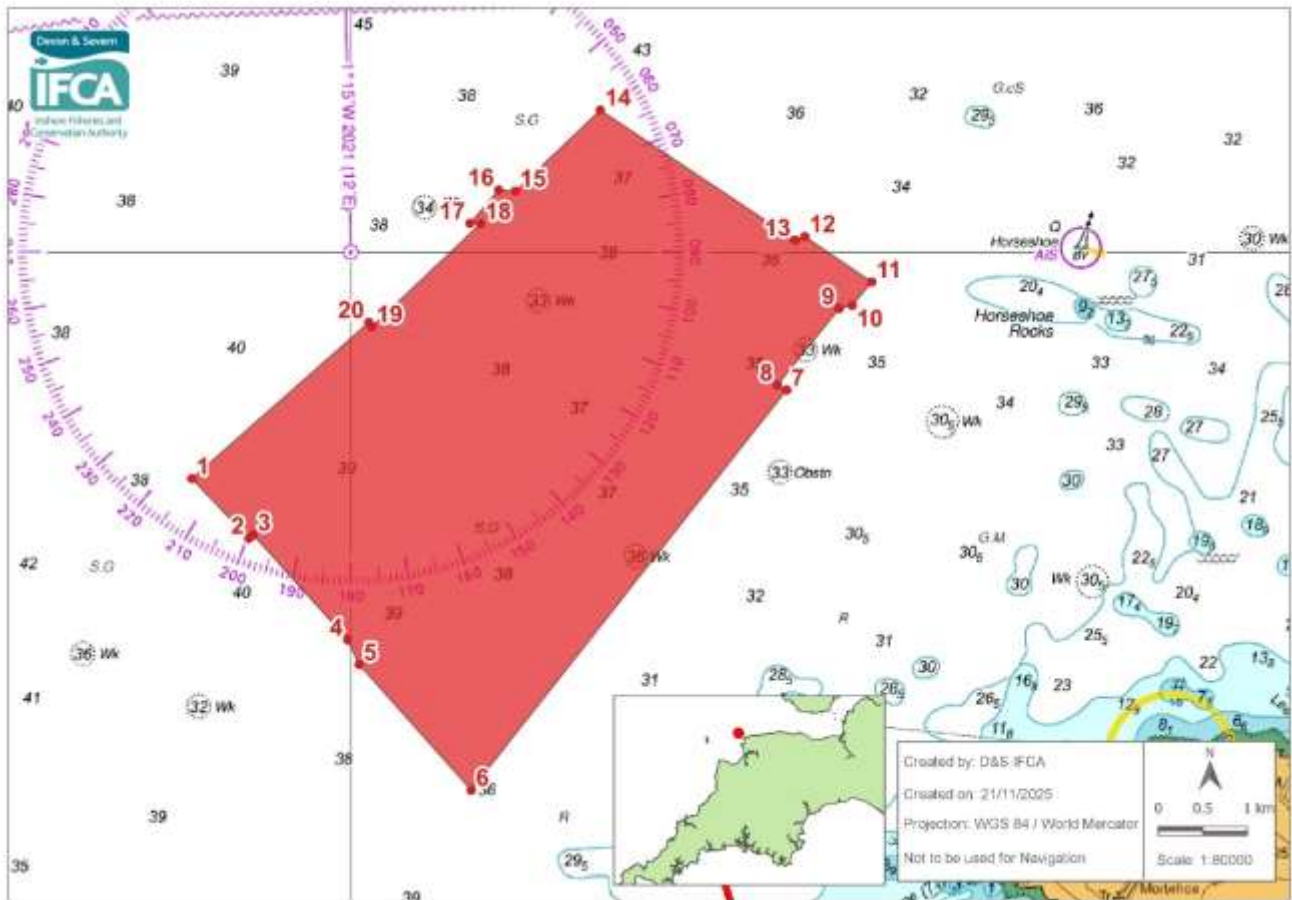
If not fishing in the green access area, all demersal mobile fishing gear must be stowed on deck.

Within the red area there is no access to demersal mobile fishing vessels unless the demersal mobile fishing gear is stowed on deck and no fishing is taking place.


**Annex 8 (a) - Access for mobile fishing vessels operating demersal mobile fishing gear in the area defined by the following points plotted sequentially and joined using straight lines (unless otherwise indicated) from Point 1 to Point 7, then returning to Point 1:**

<b>Point</b>	<b>Latitude</b>	<b>Longitude</b>
1	51° 02.098 N	004° 15.685 W
2	51° 02.281 N	004° 16.001 W
3	51° 06.816 N	004° 14.667 W
4	51° 07.341 N	004° 15.434 W
5	51° 07.351 N	004° 14.561 W
Landward boundary follows Mean High Water to Point 6		
6	51° 04.524 N	004° 12.897 W
7	51° 03.849 N	004° 13.416 W
Landward boundary follows Mean High Water to Point 1		

## Annex 9: No Access Area - Morte Platform Marine Conservation



### Legend

-  No access in accordance with paragraph 7.9 of the Category One Mobile Fishing Permit Conditions unless the demersal mobile fishing gear is stowed on deck and no fishing is taking place, or the demersal mobile fishing gear is being used for fishing within the area set out on Annex 9a.

### Explanation of the Access Restriction

Annex 9 shows the restricted access area that is relevant to demersal mobile fishing gear.

There is limited access to different areas for demersal mobile fishing gear being used for fishing.

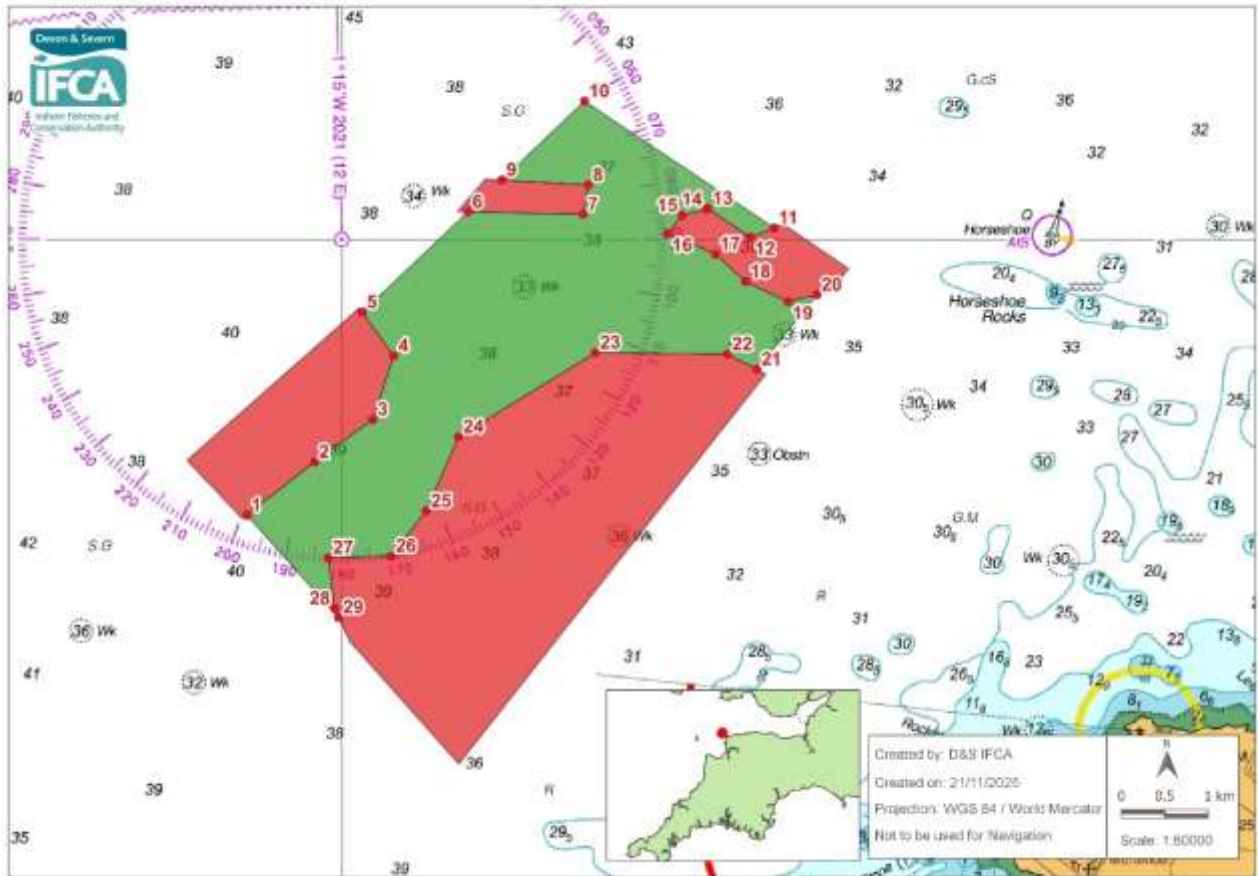
Annex 9(a) below sets out the access area for fishing with demersal mobile fishing gear.

Where Annex 9(a) does not apply, within the red area there is no access to demersal mobile fishing vessels unless the demersal mobile fishing gear is stowed on deck and no fishing is taking place.

**Annex 9 - Restricted access for mobile fishing vessels operating demersal mobile fishing gear in the area defined by the following points plotted sequentially and joined using straight lines (unless otherwise indicated) from Point 1 to Point 20 then returning to Point 1:**

<b>Point</b>	<b>Latitude</b>	<b>Longitude</b>
1	51° 13.622 N	004° 21.535 W
2	51° 13.261 N	004° 20.986 W
3	51° 13.281 N	004° 20.942 W
4	51° 12.647 N	004° 20.032 W
5	51° 12.497 N	004° 19.921 W
6	51° 11.737 N	004° 18.840 W
7	51° 14.158 N	004° 15.797 W
8	51° 14.187 N	004° 15.886 W
9	51° 14.650 N	004° 15.291 W
10	51° 14.670 N	004° 15.165 W
11	51° 14.811 N	004° 14.977 W
12	51° 15.086 N	004° 15.621 W
13	51° 15.064 N	004° 15.714 W
14	51° 15.851 N	004° 17.594 W
15	51° 15.361 N	004° 18.414 W
16	51° 15.368 N	004° 18.575 W
17	51° 15.166 N	004° 18.852 W
18	51° 15.164 N	004° 18.751 W
19	51° 14.541 N	004° 19.796 W
20	51° 14.567 N	004° 19.827 W

## Annex 9(a): Access Area - Morte Platform Marine Conservation Zone



### Legend

- Access in accordance with paragraph 7.9(b) of the Category One Mobile Fishing Permit Conditions where demersal mobile fishing gear is used for fishing within the area set out in Annex 9(a).

### Explanation of the Access Restriction

Annex 9(a) shows the green access area where demersal mobile fishing gear can be used for fishing.

If not fishing in the green access area, all demersal mobile fishing gear must be stowed on deck.

Within the red area there is no access to demersal mobile fishing vessels unless the demersal mobile fishing gear is stowed on deck and no fishing is taking place.

**Annex 9 (a) - Access for mobile fishing vessels operating demersal mobile fishing gear in the area defined by the following points plotted sequentially and joined using straight lines (unless otherwise indicated) from Point 1 to Point 29, then returning to Point 1:**

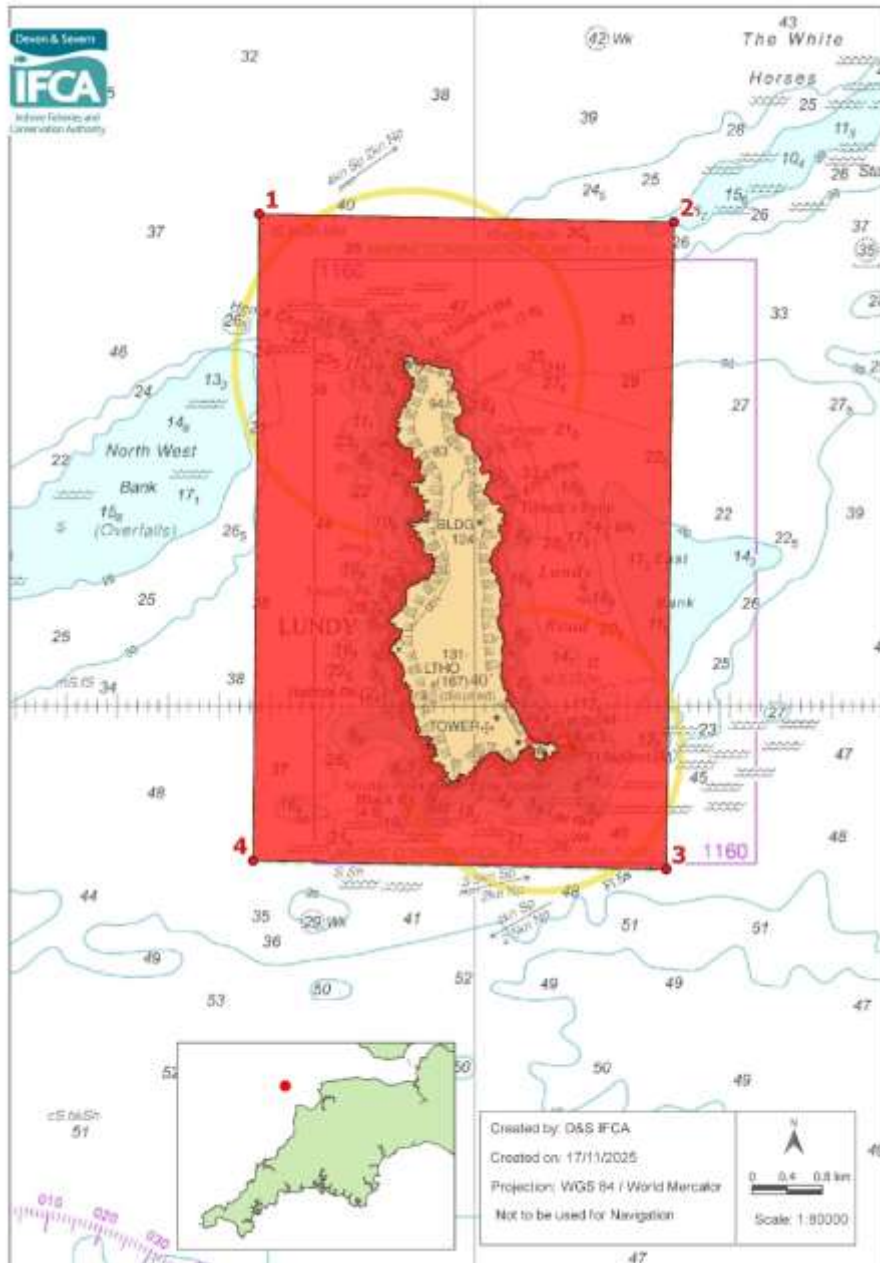
<b>Point</b>	<b>Latitude</b>	<b>Longitude</b>
1	51° 13.281 N	004° 20.942 W
2	51° 13.612 N	004° 20.269 W
3	51° 13.876 N	004° 19.691 W
4	51° 14.270 N	004° 19.485 W
5	51° 14.541 N	004° 19.796 W
6	51° 15.164 N	004° 18.751 W
7	51° 15.148 N	004° 17.607 W
8	51° 15.331 N	004° 17.557 W
9	51° 15.361 N	004° 18.414 W
10	51° 15.851 N	004° 17.594 W
11	51° 15.064 N	004° 15.714 W
12	51° 15.007 N	004° 15.953 W
13	51° 15.185 N	004° 16.372 W
14	51° 15.180 N	004° 16.385 W
15	51° 15.142 N	004° 16.628 W
16	51° 15.028 N	004° 16.774 W
17	51° 14.902 N	004° 16.296 W
18	51° 14.731 N	004° 15.997 W
19	51° 14.606 N	004° 15.578 W
20	51° 14.650 N	004° 15.291 W
21	51° 14.188 N	004° 15.886 W
22	51° 14.281 N	004° 16.177 W
23	51° 14.290 N	004° 17.485 W
24	51° 13.768 N	004° 18.842 W
25	51° 13.308 N	004° 19.162 W
26	51° 13.028 N	004° 19.509 W
27	51° 13.018 N	004° 20.132 W

*Table continued on next page*


<b>Point</b>	<b>Latitude</b>	<b>Longitude</b>
28	51° 12.702 N	004° 20.072 W
29	51° 12.647 N	004° 20.032 W

# Annex 10: No Removal of Spiny Lobster – Marine Conservation Zones

## Annex 10: Lundy Marine Conservation Zone



### Legend

-  No removal of spiny lobster in accordance with paragraph 8.1 of the Category One Mobile Fishing Permit Conditions.

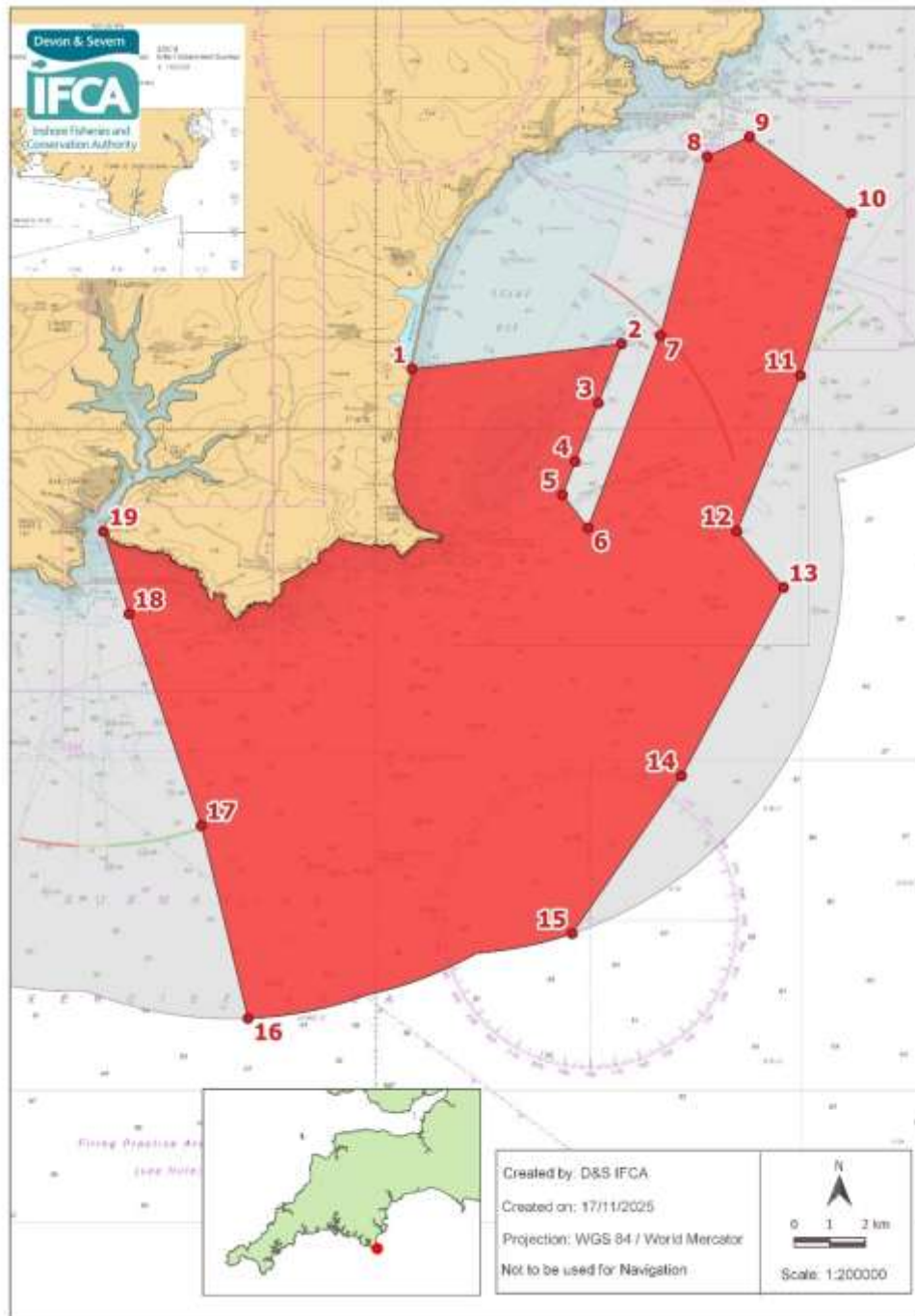
**Explanation of Restriction**

Annex 10 shows the area of the Lundy MCZ where no spiny lobster can be removed, as spiny lobster is a designated feature of the site.


**Annex 10 Lundy MCZ - No removal of spiny lobster in the area defined by the following points plotted sequentially and joined using straight lines (unless otherwise indicated) from Point 1 to Point 4, then returning to Point 1.**

<b>Point</b>	<b>Latitude</b>	<b>Longitude</b>
1	51° 13.022 N	004° 42.113 W
2	51° 12.972 N	004° 38.049 W
3	51° 08.986 N	004° 38.123 W
4	51° 09.040 N	004° 42.172 W

## Annex 10: Skerries Bank and Surrounds Marine Conservation Zone



**Legend**

 No removal of spiny lobster in accordance with paragraph 8.1 of the Category One Mobile Fishing Permit Conditions.

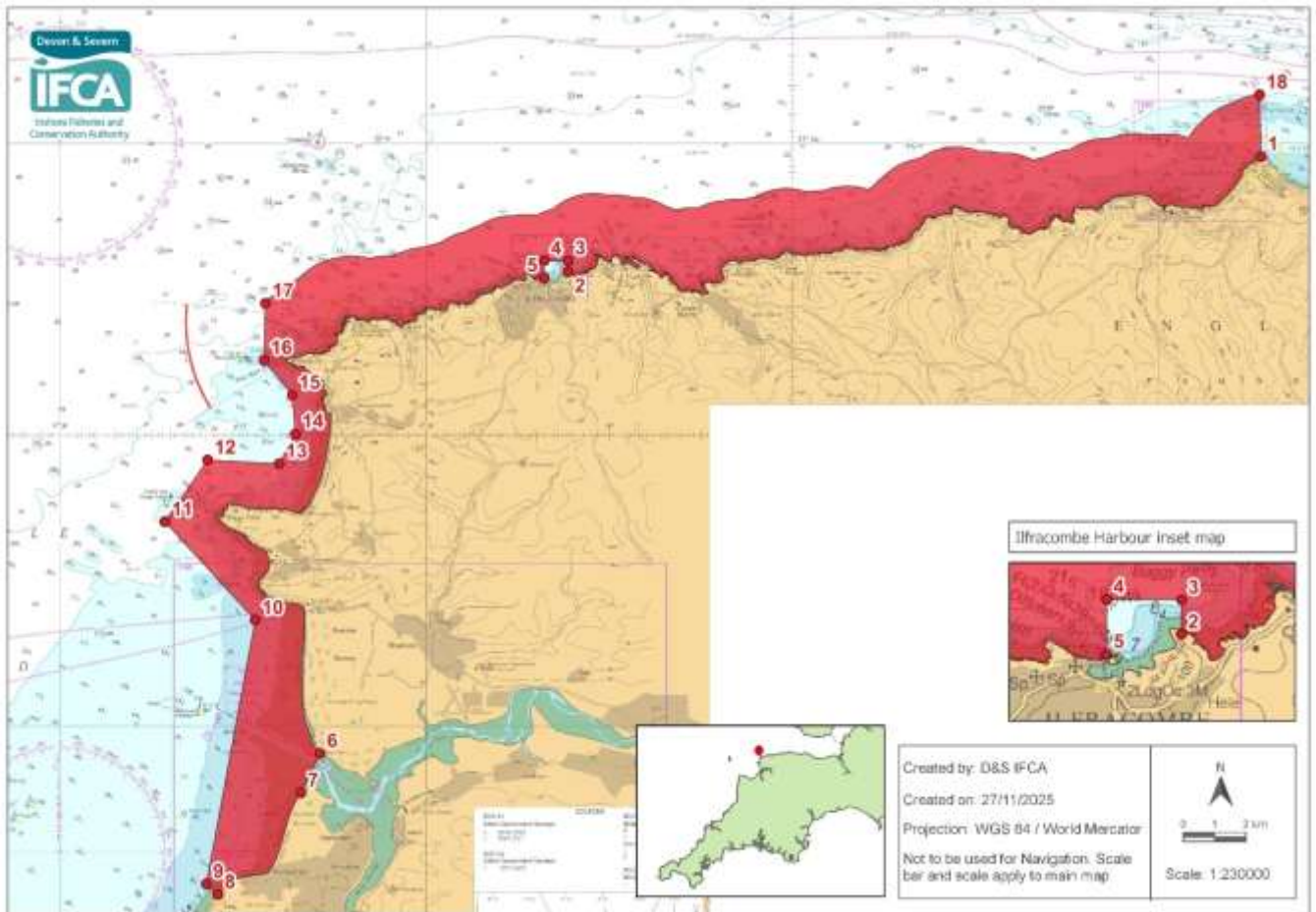
### Explanation of Restriction

Annex 10 shows the area of the Skerries Bank and Surrounds MCZ where no spiny lobster can be removed, as spiny lobster is a designated feature of the site.

**Annex 10 Skerries Bank and Surrounds MCZ - No removal of spiny lobster in the area defined by the following points plotted sequentially and joined using straight lines (unless otherwise indicated) from Point 1 to Point 19, then returning to Point 1.**

Point	Latitude	Longitude
1	50° 15.897 N	003° 39.141 W
2	50° 16.278 N	003° 34.212 W
3	50° 15.384 N	003° 34.758 W
4	50° 14.502 N	003° 35.298 W
5	50° 13.998 N	003° 35.598 W
6	50° 13.500 N	003° 35.000 W
7	50° 16.400 N	003° 33.300 W
8	50° 19.100 N	003° 32.200 W
9	50° 19.400 N	003° 31.200 W
10	50° 18.250 N	003° 28.800 W
11	50° 15.800 N	003° 30.000 W
12	50° 13.450 N	003° 31.500 W
13	50° 12.600 N	003° 30.400 W
14	50° 09.750 N	003° 32.800 W
15	50° 07.368 N	003° 35.373 W
Then follow the six nautical mile limit to Point 16		
16	50° 06.084 N	003° 43.000 W
17	50° 09.000 N	003° 44.100 W
18	50° 12.200 N	003° 45.800 W
19	50° 13.444 N	003° 46.402 W
Landward boundary follows mean high water to Point 1		

## Annex 10: Bideford to Foreland Point Marine Conservation Zone



### Legend

- No removal of spiny lobster in accordance with paragraph 8.1 of the Category One Mobile Fishing Permit Conditions.

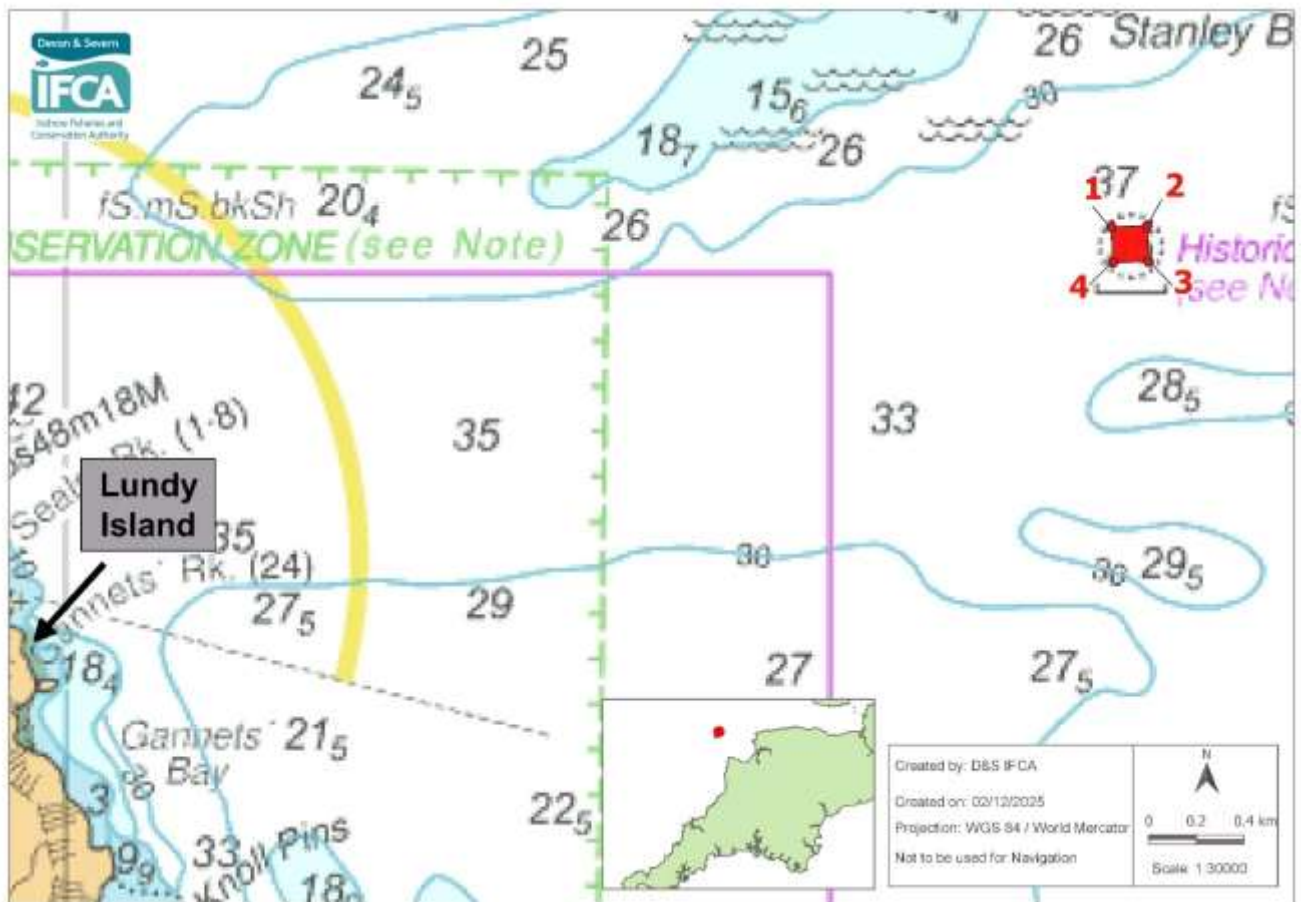
### Explanation of Restriction

Annex 10 shows the area of the Bideford to Foreland Point MCZ where no spiny lobster can be removed, as spiny lobster is a designated feature of the site.

**Annex 10 Bideford to Foreland Point MCZ - No removal of spiny lobster in the area defined by the following points plotted sequentially and joined using straight lines (unless otherwise indicated) from Point 1 to Point 18, then returning to Point 1.**

<b>Point</b>	<b>Latitude</b>	<b>Longitude</b>
1	51° 14.764 N	003° 47.204 W
Landward boundary follows Mean High Water to Point 2		
2	51° 12.792 N	004° 06.130 W
3	51° 12.980 N	004° 06.126 W
4	51° 12.983 N	004° 06.778 W
5	51° 12.683 N	004° 06.778 W
Landward boundary follows Mean High Water to Point 6		
6	51° 04.524 N	004° 12.897 W
7	51° 03.849 N	004° 13.416 W
Landward boundary follows Mean High Water to Point 8		
8	51° 02.098 N	004° 15.685 W
9	51° 02.281 N	004° 16.001 W
10	51° 06.816 N	004° 14.667 W
11	51° 08.505 N	004° 17.135 W
12	51° 09.563 N	004° 15.967 W
13	51° 09.499 N	004° 14.015 W
14	51° 10.011 N	004° 13.570 W
15	51° 10.676 N	004° 13.655 W
16	51° 11.274 N	004° 14.426 W
17	51° 12.250 N	004° 14.385 W
Seaward boundary follows a one nautical mile line from Mean High Water to Point 18		
18	51° 15.825 N	003° 47.244 W

## Annex 11: No Access Area - Heritage Assets Sites



### Legend



No access in accordance with paragraph 9.1 of the Category One Mobile Fishing Permit Conditions unless the demersal mobile fishing gear is stowed on deck and no fishing is taking place.

### Explanation of the Access Restriction

Annex 11 shows the no access area that is relevant to demersal mobile fishing gear.

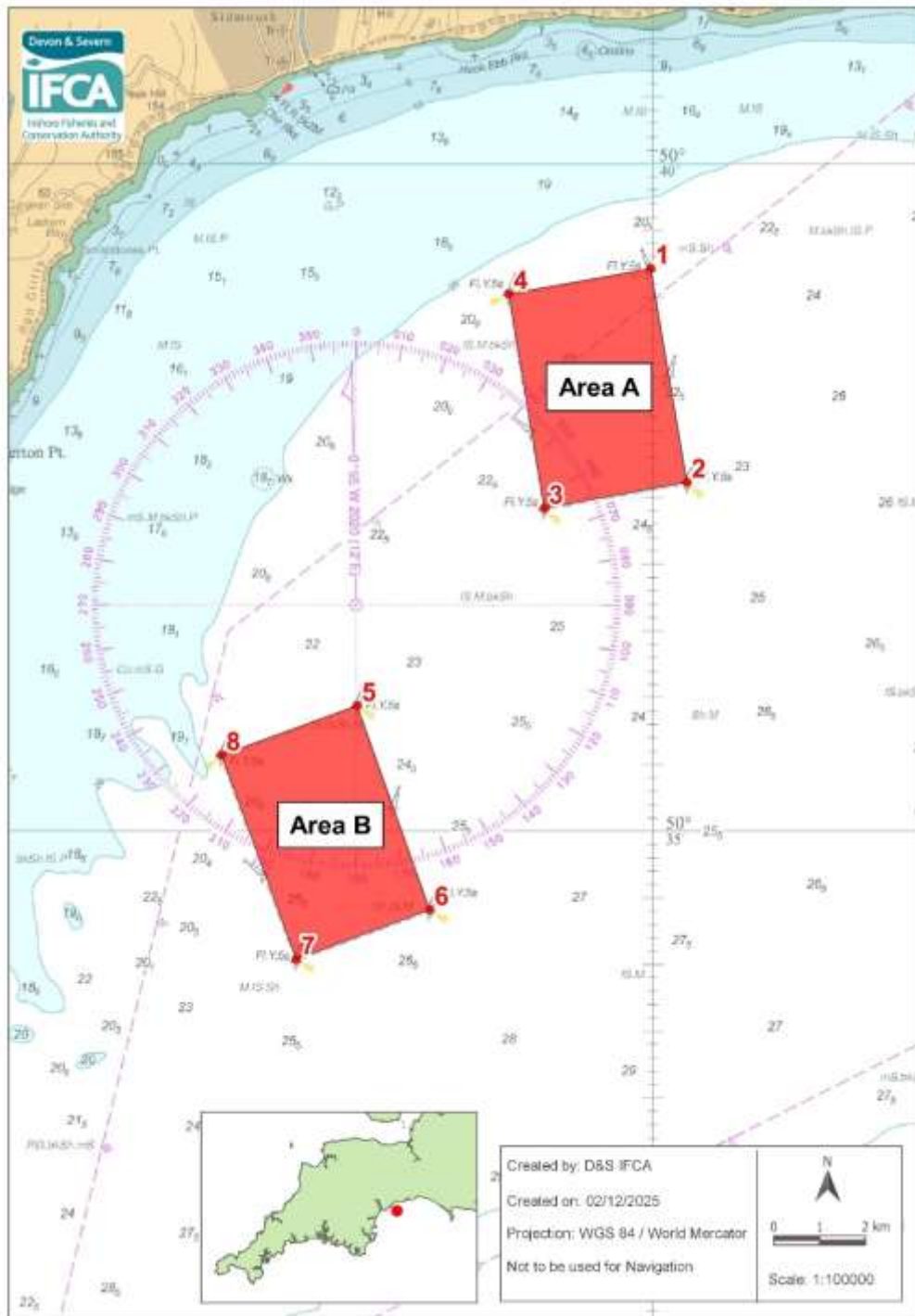
Within the red area there is no access to demersal mobile fishing vessels unless the demersal mobile fishing gear is stowed on deck and no fishing is taking place.

**Annex 11 - No access for mobile fishing vessels operating demersal mobile fishing gear in the area defined by the following points plotted sequentially and joined using straight lines (unless otherwise indicated) from Point 1 to Point 4 then returning to Point 1:**

<b>Point</b>	<b>Latitude</b>	<b>Longitude</b>
1	51° 12.845 N	004° 36.229 W
2	51° 12.848 N	004° 36.100 W
3	51° 12.767 N	004° 36.095 W
4	51° 12.764 N	004° 36.224 W

# Annex 12: No Access Areas - Coastal Mariculture Sites

## Annex 12: Lyme Bay Areas A and B



### Legend



No access in accordance with paragraph 10.1 of the Category One Mobile Fishing Permit Conditions unless the demersal mobile fishing gear is stowed on deck and no fishing is taking place.

## Annex 12: Tor Bay Area C

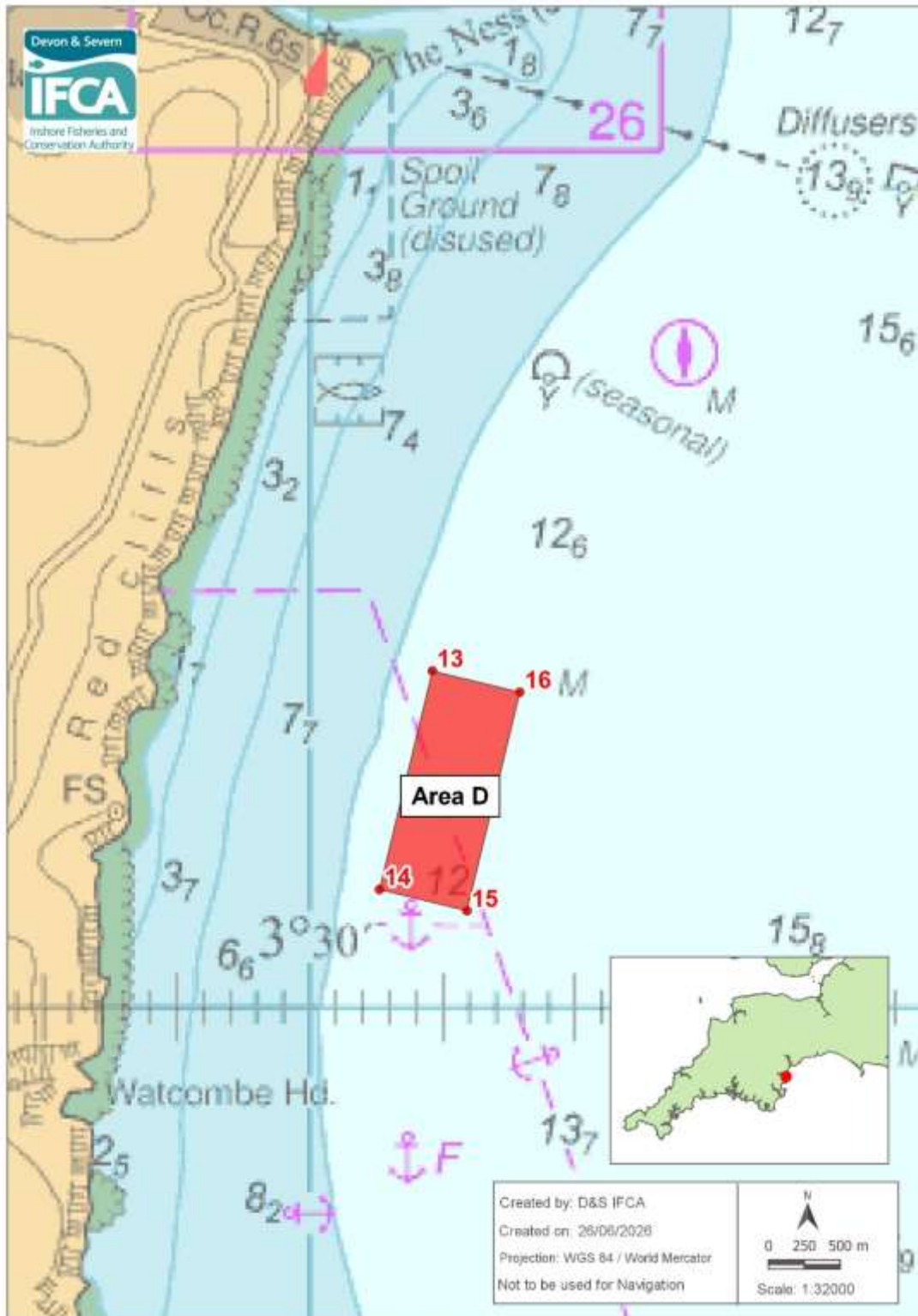


### Legend



No access in accordance with paragraph 10.1 of the Category One Mobile Fishing Permit Conditions unless the demersal mobile fishing gear is stowed on deck and no fishing is taking place.

## Annex 12: Labrador Bay Area D

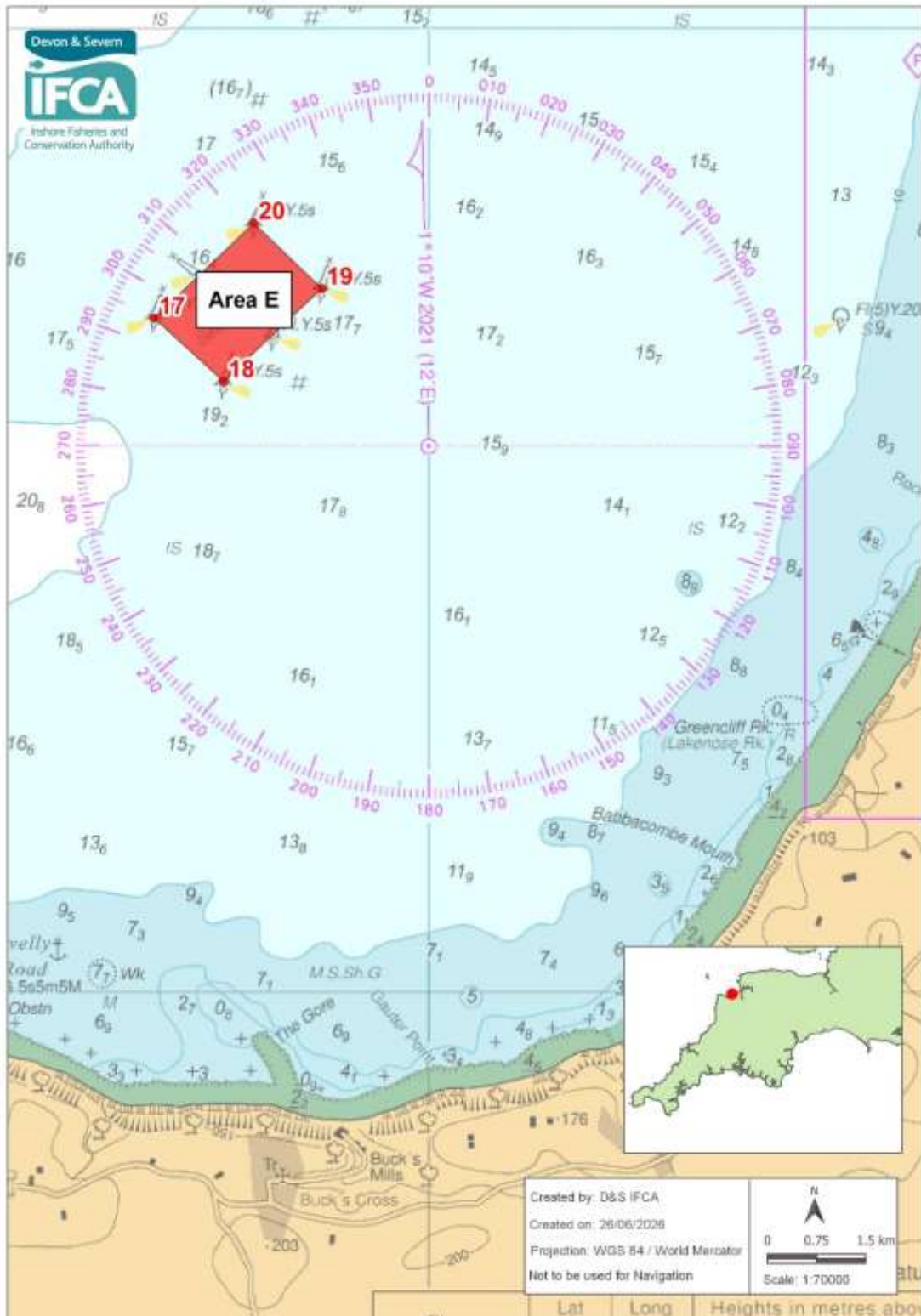


### Legend



No access in accordance with paragraph 10.1 of the Category One Mobile Fishing Permit Conditions unless the demersal mobile fishing gear is stowed on deck and no fishing is taking place.

## Annex 12: Bideford Bay Area E



### Legend



No access in accordance with paragraph 10.1 of the Category One Mobile Fishing Permit Conditions unless the demersal mobile fishing gear is stowed on deck and no fishing is taking place.

### **Explanation of the Access Restriction**

Annex 12 Areas A, B, C, D, and E show the no access areas that are relevant to demersal mobile fishing gear.

Within the red areas there is no access to demersal mobile fishing vessels unless the demersal mobile fishing gear is stowed on deck and no fishing is taking place.

### **Area A Lyme Bay**

**Annex 12 Area A - No access for mobile fishing vessels operating demersal mobile fishing gear in the area defined by the following points plotted sequentially and joined using straight lines (unless otherwise indicated) from Point 1 to Point 4 then returning to Point 1:**

<b>Point</b>	<b>Latitude</b>	<b>Longitude</b>
1	50° 39.200 N	003° 10.028 W
2	50° 37.600 N	003° 09.600 W
3	50° 37.405 N	003° 11.281 W
4	50° 39.010 N	003° 11.700 W

### **Area B Lyme Bay**

**Annex 12 Area B - No access for mobile fishing vessels operating demersal mobile fishing gear in the area defined by the following points plotted sequentially and joined using straight lines (unless otherwise indicated) from Point 5 to Point 8 then returning to Point 5:**

<b>Point</b>	<b>Latitude</b>	<b>Longitude</b>
5	50° 35.927 N	003° 13.488 W
6	50° 34.397 N	003° 12.632 W
7	50° 34.025 N	003° 14.205 W
8	50° 35.556 N	003° 15.086 W

### Area C Tor Bay

**Annex 12 Area C - No access for mobile fishing vessels operating demersal mobile fishing gear in the area defined by the following points plotted sequentially and joined using straight lines (unless otherwise indicated) from Point 9 to Point 12 then returning to Point 9:**

Point	Latitude	Longitude
9	50° 26.865 N	003° 29.080 W
10	50° 26.615 N	003° 29.080 W
11	50° 26.615 N	003° 29.780 W
12	50° 26.865 N	003° 29.780 W

### Area D Labrador Bay

**Annex 12 Area D - No access for mobile fishing vessels operating demersal mobile fishing gear in the area defined by the following points plotted sequentially and joined using straight lines (unless otherwise indicated) from Point 13 to Point 16 then returning to Point 13:**

Point	Latitude	Longitude
13	50° 30.792 N	003° 29.543 W
14	50° 30.268 N	003° 29.742 W
15	50° 30.217 N	003° 29.413 W
16	50° 30.741 N	003° 29.214 W

### Area E Bideford Bay

**Annex 12 Area E - No access for mobile fishing vessels operating demersal mobile fishing gear in the area defined by the following points plotted sequentially and joined using straight lines (unless otherwise indicated) from Point 17 to Point 20 then returning to Point 17:**

Point	Latitude	Longitude
17	51° 03.489 N	004° 22.258 W
18	51° 03.161 N	004° 21.687 W
19	51° 03.642 N	004° 20.880 W
20	51° 03.981 N	004° 21.438 W

## Annex 13: Non-Reporting of a Vessel Monitoring Device

### Explanation of the Restriction

Annex 13 sets out a list of places where a vessel monitoring device is not required to report.

The areas set out in Annex 13 are places where a vessel monitoring device that is no longer fully functioning can be repaired or replaced.

If a vessel is already in one of the areas set out in Annex 13 and the vessel monitoring device is not functioning, the vessel must:

1. remain in this location until the vessel monitoring device has been repaired by a manufacturer's approved engineer and the approved engineer's report has been received by the Authority in writing; or
2. a written authorisation has been issued to enable the vessel to transit somewhere else for the repair of the vessel monitoring device; or
3. the permit holder surrenders their Category One Mobile Fishing Permit and does not fish within the District until a new permit is issued.

### Legend for All Areas



Red Hatched Areas: No requirement for the transmission of relevant data in accordance with paragraph 4.2(b) of the Category One Mobile Fishing Permit Conditions.

**Annex 13 – Areas where a vessel monitoring device is not required to report, and where a vessel monitoring device that is no longer fully functioning can be repaired. Each area is defined by points plotted sequentially and joined using straight lines (unless otherwise indicated):**

#### Axmouth

Point	Latitude	Longitude
1	50° 42.135 N	003° 03.274 W
2	50° 42.354 N	003° 03.269 W
3	50° 42.362 N	003° 03.684 W
4	50° 42.162 N	003° 03.575 W
5	50° 42.135 N	003° 03.354 W
Then returning to Point 1		



### Exe Estuary

Point	Latitude	Longitude
1	50° 35.518 N	003° 26.629 W
2	50° 39.320 N	003° 27.424 W
3	50° 39.359 N	003° 26.134 W
4	50° 36.421 N	003° 23.108 W
Then returning to Point 1		



### Teignmouth

Point	Latitude	Longitude
1	50° 32.279 N	003° 29.810 W
2	50° 32.753 N	003° 29.816 W
3	50° 32.773 N	003° 30.617 W
4	50° 32.403 N	003° 30.606 W
Then returning to Point 1		



### Torquay Harbour

Point	Latitude	Longitude
1	50° 27.664 N	003° 31.853 W
2	50° 27.655 N	003° 31.401 W
3	50° 27.438 N	003° 31.541 W
4	50° 27.399 N	003° 31.738 W
5	50° 27.433 N	003° 31.736 W
6	50° 27.507 N	003° 31.852 W
Then returning to Point 1		



**Brixham Harbour**

Point	Latitude	Longitude
1	50° 23.995 N	003° 30.305 W
2	50° 23.741 N	003° 30.735 W
3	50° 24.190 N	003° 31.226 W
4	50° 24.335 N	003° 30.779 W
Then returning to Point 1		



**Dart Estuary**

Point	Latitude	Longitude
1	50° 19.648 N	003° 34.220 W
2	50° 23.708 N	003° 36.625 W
3	50° 23.699 N	003° 34.307 W
4	50° 20.121 N	003° 32.648 W
Then returning to Point 1		



**Salcombe Harbour**

Point	Latitude	Longitude
1	50° 13.444 N	003° 46.915 W
2	50° 15.311 N	003° 46.915 W
3	50° 15.311 N	003° 44.669 W
4	50° 13.444 N	003° 44.669 W
Then returning to Point 1		



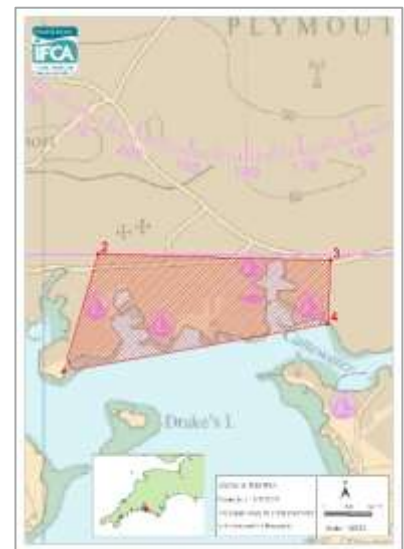
**Yealm Estuary**

Point	Latitude	Longitude
1	50° 18.736 N	004° 04.148 W
2	50° 19.618 N	004° 02.917 W
3	50° 19.609N	004° 02.382 W
4	50° 18.550 N	004° 02.386 W
5	50° 18.550 N	004° 04.275 W
Then returning to Point 1		



**Sutton Harbour**

Point	Latitude	Longitude
1	50° 21.580 N	004° 09.820 W
2	50° 22.243 N	004° 09.512 W
3	50° 22.208 N	004° 07.469 W
4	50° 21.850 N	004° 07.490 W
Then returning to Point 1		



**Tamar**

Point	Latitude	Longitude
1	50° 21.760 N	004° 10.120 W
2	50° 21.797 N	004° 10.169 W
3	50° 22.160 N	004° 09.926 W
4	50° 22.157 N	004° 09.706 W
5	50° 21.749 N	004° 09.752 W
6	50° 21.580 N	004° 10.040 W
Then returning to Point 1		



### Plym

Point	Latitude	Longitude
1	50° 21.627 N	004° 07.814 W
2	50° 21.109 N	004° 06.532 W
3	50° 21.886 N	004° 06.035 W
4	50° 22.248 N	004° 06.920 W
Then returning to Point 1		



### Taw Torridge Estuary

Point	Latitude	Longitude
1	51° 07.040 N	004° 13.470 W
2	51° 02.620 N	004° 14.270 W
3	51° 00.904 N	004° 14.270 W
4	51° 00.904 N	004° 03.853 W
5	51° 07.040 N	004° 03.853 W
Then returning to Point 1		



### Ifracombe Harbour

Point	Latitude	Longitude
1	51° 12.651 N	004° 06.662 W
2	51° 12.580 N	004° 06.500 W
3	51° 12.540 N	004° 06.500 W
4	51° 12.540 N	004° 06.944 W
5	51° 12.651 N	004° 06.944 W
Then returning to Point 1		



## Watchet Harbour

Point	Latitude	Longitude
1	51° 11.040 N	003° 19.750 W
2	51° 10.957 N	003° 19.599 W
3	51° 10.892 N	003° 19.696 W
4	51° 10.981N	003° 19.923 W
Then returning to Point 1		



## Annex 14: Measurement of the Size of a Marine Organism and Identification of a 'V-Notched' Lobster

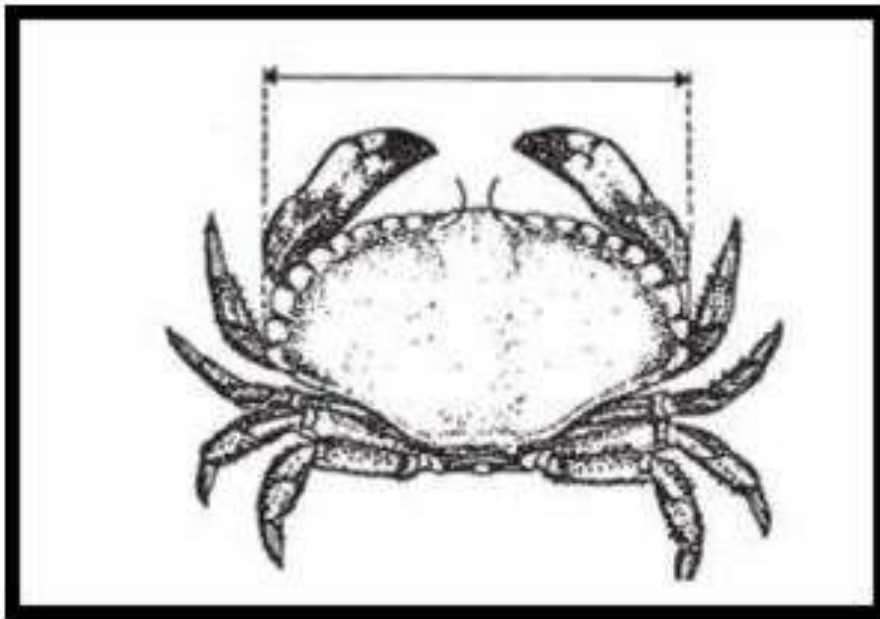
### Explanation of the Restriction

Annex 14 shows how the measurement of the species listed in paragraph 1.3 of the Category One Permit Conditions will be determined in accordance with the sizes set out in paragraph 1.3 of the Category One Permit Conditions.

Annex 14 also shows how a 'v-notched' lobster is identified.

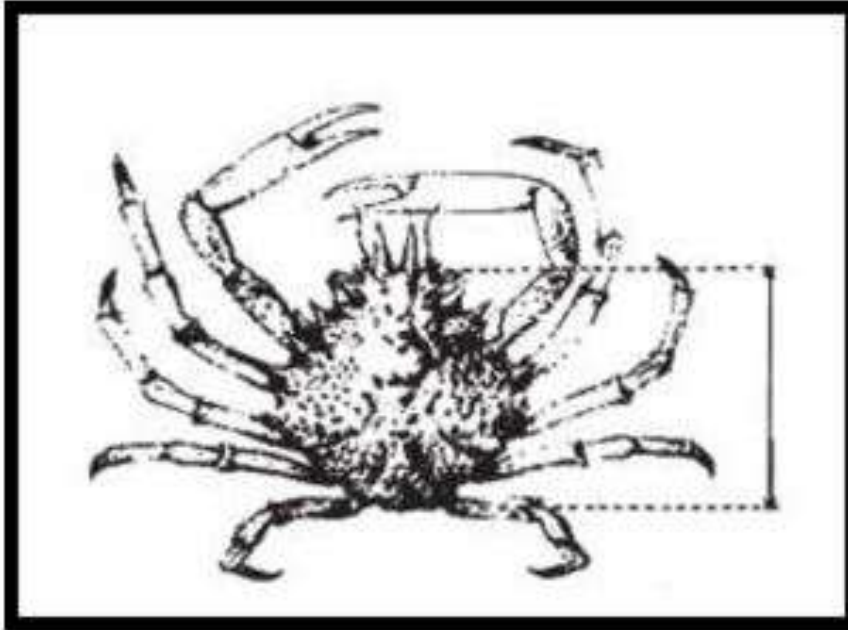
### Edible Crab and Velvet Swimming Crab

1. A female edible crab is measured across the broadest part of the carapace and must be 150mm or more.
2. A male edible crab is measured across the broadest part of the carapace and must be 160mm or more.
3. A velvet swimming crab is measured across the broadest part of the carapace and must be 65mm or more.



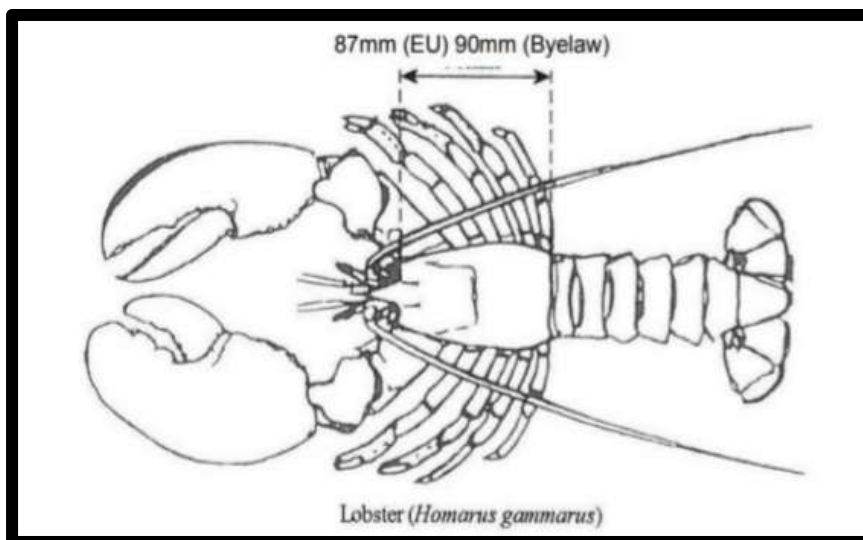
### Spider Crab

4. Male and female spider crabs are measured as the length of the carapace, along the midline, from the edge of the carapace between the rostrums to the posterior edge of the carapace and must be 130mm or more.



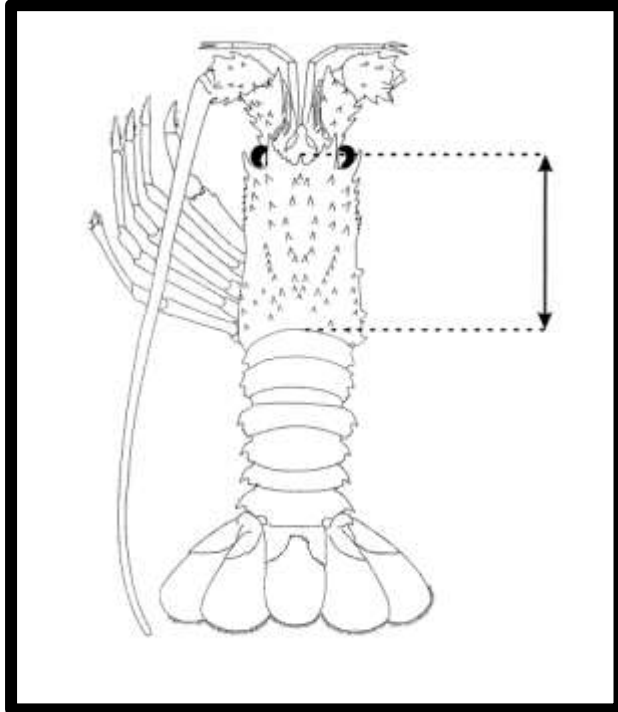
### Lobster

5. A lobster is measured as the length of the carapace, parallel to the midline, from the back of either eye socket to the distal edge of the carapace and must be 90mm or more.



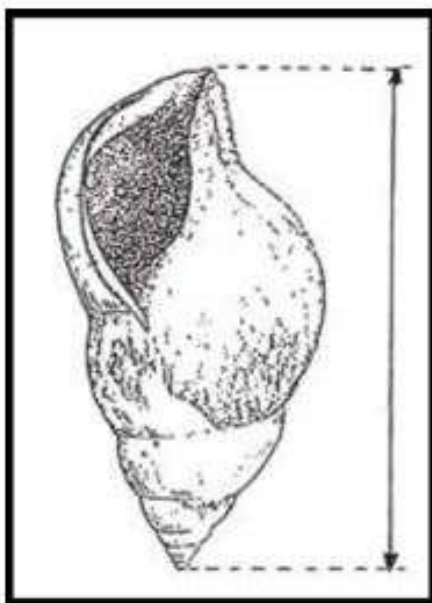
Spiny Lobster

6. A spiny lobster is measured as the length of the carapace from the tip of the rostrum to the midpoint of the distal edge of the carapace and must be 110mm or more.



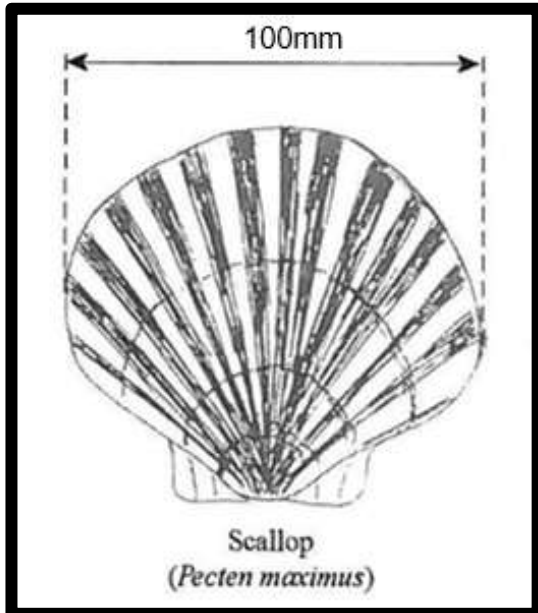
Whelk

7. A whelk is measured along the length of the shell and must be 65mm or more.



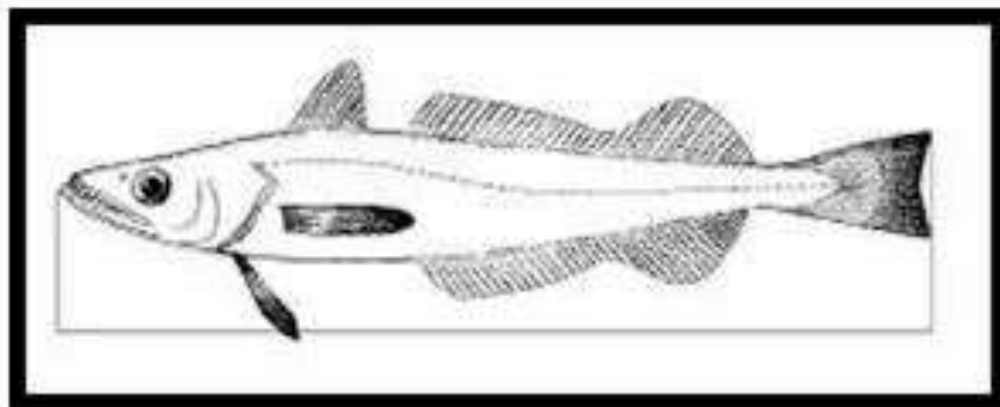
### Scallop

8. A scallop is measured across the broadest part of the flat shell and must be 100mm or more.



### Finfish

9. Finfish are measured from the tip of the snout to the end of the tail fin.



- Bass must be 42cm or more in length.

Identification of a V-Notched Lobster

“v-notched' lobster” means a lobster or spiny lobster with an indentation in the shape of the letter “v” or resembling the shape of a “v” made in either of the outer pairs of uropods on the tail fan (and 'v-notch' and 'v-notching' shall be interpreted accordingly).

*Image (below left): Newly 'V' – notched*

*Image (below right): 'V' - notch reducing from moulting.*

